

## FCC statement

This equipment has been tested and found to comply with the limits for a class B digital device, pursuant to Part 15 of the FCC Rules. These limits are designed to provide reasonable protection against harmful interference in a residential installation.

This equipment generates uses and can radiate radio frequency energy and, if not installed and used in accordance with the instructions, may cause harmful interference to radio communications. However, there is no guarantee that interference will not occur in a particular installation if this equipment does cause harmful interference to radio or television reception, which can be determined by turning the equipment off and on, the user is encouraged to try to correct the interference by one of the following measures:

- Reorient or relocate the receiving antenna.
- Increase the separation between the equipment and receiver.
- Connect the equipment into an outlet on a circuit different from that to which the receiver is connected.

To assure continued compliance, any changes or modifications not expressly approved by the party responsible for compliance could void the user's authority to operate this equipment. (Example-use only shielded interface cables when connecting to computer or peripheral devices).

This device complies with Part 15 of the FCC Rules. Operation is subject to the following two conditions:

- (1) This device may not cause harmful interference. and
- (2) This device must accept any interference received, including interference that may cause undesired operation.



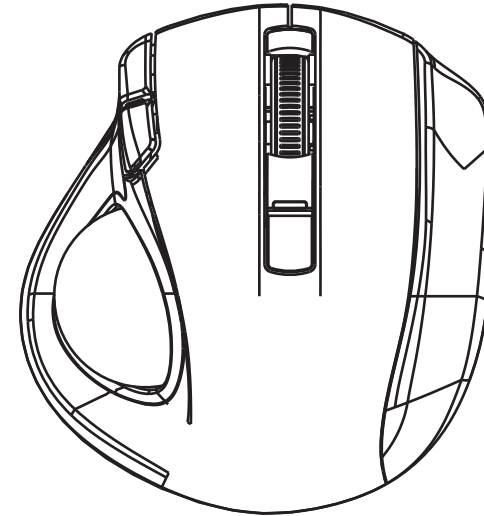
This symbol on the product or in the instructions means that your electrical and electronic equipment should be disposed at the end its life separately from your household waste. There are sparate collection system for recycling in the EU.

For more information, please contact the local authority or your retailer where you purchased the product.

### CAUTION:

RISK OF EXPLOSION IF BATTERY IS REPLACEDBY INCORRECT TYPE.  
DISPOSE OF USED BATTERIES ACCORDING TO THE INSTRUCTIONS.  
This product uses non-rechargeable Alkaline batteries.

# Wireless Trackball Laser Mouse L087SR+C75



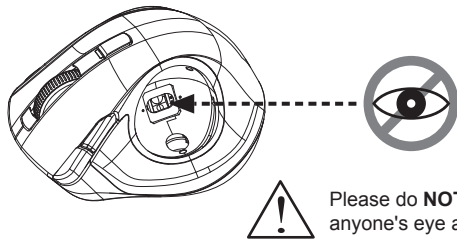
## User's Guide

## Introduction

Congratulations on your purchase of this most innovative wireless trackball laser mouse. Equipped with Auto-Speed technology, the mouse can automatically adjust the cursor speed to precisely get to the point you want. Furthermore, just rolling the ball to freely control the cursor movement, no need to move the mouse, can reduce the use of the wrist and the incidence of carpal tunnel syndrome. It offers more advance that will make you more productive and more comfortable.

### ! Safety Notice

- This product complies with IEC 60825-1, Class I laser product.
- The product complies with FCC and CE rules.



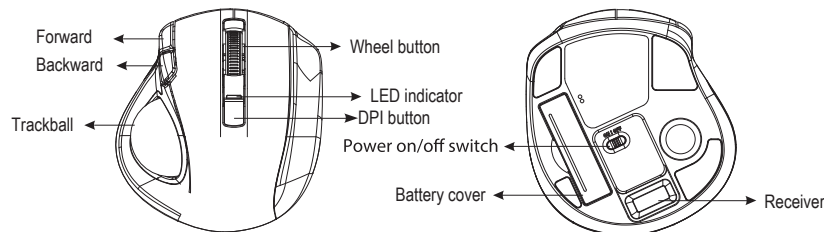
Please do **NOT** direct the laser beam at anyone's eye after the ball is taken out.

## Features

- 2.4GHz (distance 6~8m), 16 Channels/2<sup>24</sup> ID
- Using state-of-art technology. High tracking speed and sensitivity.
- Auto-Speed technology. - automatically adjust your cursor speed to precisely get to the point you want.
- Ergonomic design to support your hand in comfort.
- Nano receiver.
- Longer battery life.
- Auto-Link, Plug and Play! No need to set the channel ID.
- Power on/off switch.
- Ergonomic design.
- Auto-Speed On/Off switchable:Auto-Speed ON 450~1200 dpi / Auto-Speed Off fixed 600 dpi.
- AAA Alkaline battery x 2pcs included.

## Mouse

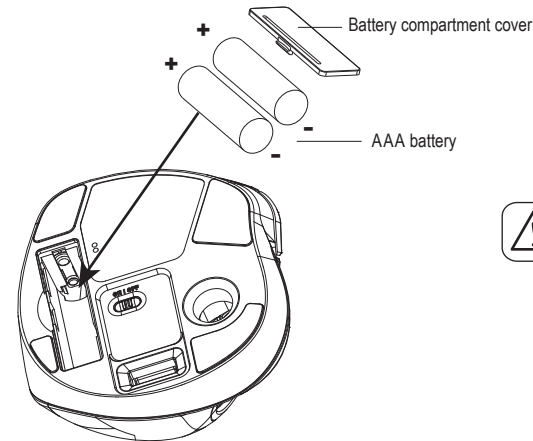
## Receiver



## Operation

### 1. Insert the battery

- Remove the battery compartment cover on the bottom case of the mouse.
- Fit in the battery accordingly to the diagram indicated in the battery cabinet.
- Close the battery compartment cover properly.
- Make sure the Power on-off switch on the bottom of the mouse is ON.
- The Low Power LED will be on for 6 seconds when switched to ON.



! A wrong battery placement may cause batteries overheat.

### ! Note

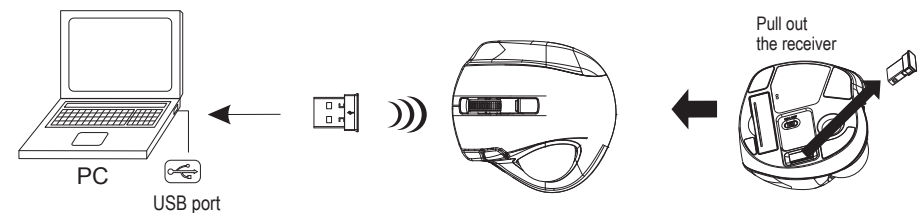
- The unit offers a strong power saving management. Once the mouse accesses the sleeping mode, " to click any button of the mouse" is compulsory to wake it up.

#### Power on/off:

- There is a Power on/off switch designed to save the batteries power while non-usage of a longer period.
- User can push DPI button to change the resolution. The LED will flash when dpi has been sucessfully swithced.

### 2. Connect the receiver

- Turn on your PC.
- Connect the receiver to USB port on PC.



### 3. Communication : The mouse & the receiver

The 2.4Ghz RF mouse features a dual-way transmission technology which enables the mouse and the receiver auto-communication.

#### Auto-link mode

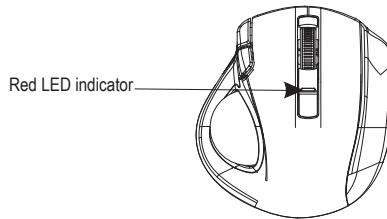
1. Make sure the Power On-Off Switch on the bottom of the mouse is ON.
2. Roll the trackball, and the cursor's movement is mapping the trackball movement. Now the mouse and the receiver is auto-linked successfully.

#### ! Note

- > While the mouse is working, if encountering any interference, the mouse and the receiver will automatically source out and transfer to another free channel. During the transferring, the cursor movement may have a second delay.

### 4. Red LED Indicators

- Power On / Low Power Indicator
  - > will be on for 6 seconds when switched to On.
  - > will blink for 6 seconds when in use if the battery power is low.
- DPI Indicator
  - > flash twice when switched to Auto-Speed ON 450~1200 dpi.
  - > flash once when switched to Auto-Speed OFF fixed 600 dpi



### 5. Clean the trackball

You may need to take out the trackball to clean it when the ball is not smooth due to dirt after a long time use

### ⊙ Trouble Shooting

- a. Make sure you have connected the receiver correctly to the computer's USB port.
- b. For the best performance, we suggest you to locate the receiver with a distance from other electrical devices, such as the computer, the computer monitor or external storage drives.
- c. Make sure you have set the communication between the receiver and the mouse. Refer to the Communication :The mouse and the receiver.
- d. Restart the mouse by turning it off and then back on.
- e. Try another USB port.
- f. Check if the battery is inserted in correct direction.

### ⊙ Battery use reminders

1. Remove worn-out batteries from equipment immediately and dispose of promptly.
2. Keep all batteries (used or new) out of the reach of children.
3. To have the batteries with a regular check and replace new batteries if not used for a long time.
4. Never dispose of batteries in fire, as they could explode.
5. Mixing old and new batteries or mixing types (such as alkaline with zinc carbon) will reduce overall performance and could cause leakage or rupture.
6. Remove batteries from the electrical device if the device is not going to be used for a long time.
7. If the performance of the batteries decreases substantially, it is time to replace the batteries.