

❖ Battery use reminders

1. Remove worn-out batteries from equipment immediately and dispose of promptly.
2. Keep all batteries (used or new) out of the reach of children.
3. To have the batteries with a regular check and replace new batteries if not used for a long time.
4. Never dispose of batteries in fire, as they could explode.
5. Always replace all the batteries at the same time. Mixing old and new batteries or mixing types (such as alkaline with zinc carbon) will reduce overall performance and could cause leakage or rupture.
6. Do not mix different types of batteries (e.g. Ni-MH, NiCd, alkaline, and etc) in the mouse.
7. Remove batteries from the electrical device if the device is not going to be used for a long time.
8. If the performance of the batteries decreases substantially, it is time to replace the batteries.

Bluetooth™ *Laser Mouse*



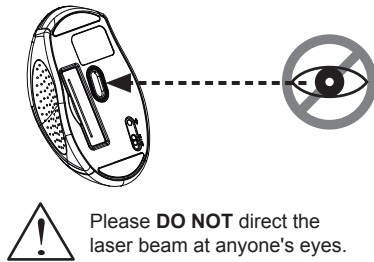
L219BT *User's Guide*

Introduction

Congratulations on your purchase of the most innovative bluetooth mouse. With an incredible sensitivity to surface details and high tracking speed than other mice, the mouse can track reliably even on tricky polished or wood-grain surfaces. It offers even more advance that will make you more productive and more comfortable.

! Safety Notice

- This product complies with IEC 60825-1, Class I laser product. (for Laser mouse models only.)
- The product complies with FCC and CE rules.



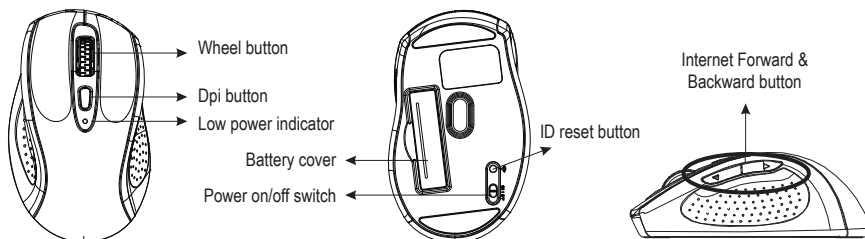
Features

- 2.4GHz Bluetooth RF (distance : 10m, in open site)
- Using state-of-art technology. High tracking speed and sensitivity.
- 79 Channels
- Power on/off switch
- 2*AAA Alkaline batteries included
- 800/1600 dpi switchable button.

! Note

- This Product doesn't include Bluetooth dongle.
- The mouse easily connects to notebooks built in Bluetooth technology.
- The mouse also can be connected to Bluetooth dongle through your Bluetooth dongle driver, it is not guaranteed 100% compatible.

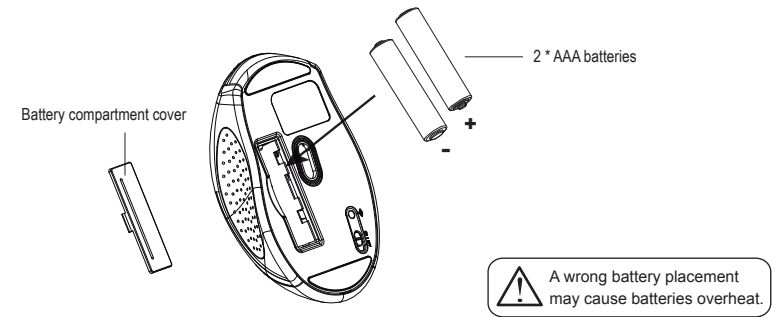
Mouse



Hardware Installation

1. Insert the batteries

- Remove the battery compartment cover on the bottom case of the mouse
- Fit in the batteries accordingly to the diagram indicated in the battery cabinet.
- Close the battery compartments cover properly.
- Make sure the Power on-off switch on the bottom of the mouse is ON.
- The Low Power LED in the scroll wheel will blink 3 seconds if the mouse power is on.

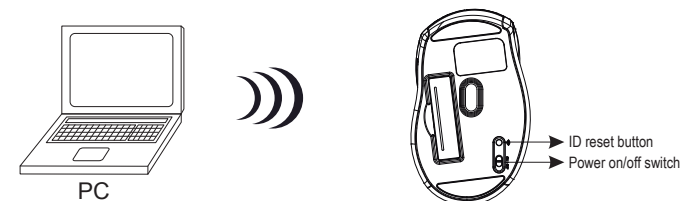


! Note

- The unit offers a strong power saving management. Once the mouse accesses the sleeping mode, " to click any button of the mouse" is compulsory to wake it up.
- **Power on/off:**
Power on/off switch is designed to save the batteries power while non-usage of a longer period.
- The red LED on the scroll wheel of the mouse is a low batteries power indicator. It indicates that batteries inside the mouse need to be replaced.
- Make sure that you are not working the mouse on glossy or reflective surfaces.

2. Bluetooth Pairing

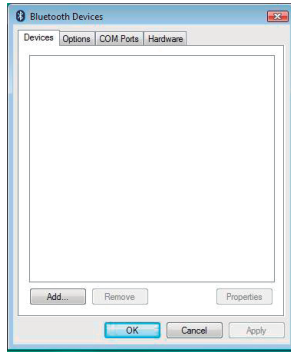
- Turn on your PC .
- Insert battery properly (please refer to "Hardware Installation" & "Insert the batteries") make sure that mouse is in power on status. Push ID Button to enter connecting status, and low power LED will be flashing slowly



c. Click “Bluetooth icon” to open Bluetooth device in control panel or toolbar



d..Click “ add “

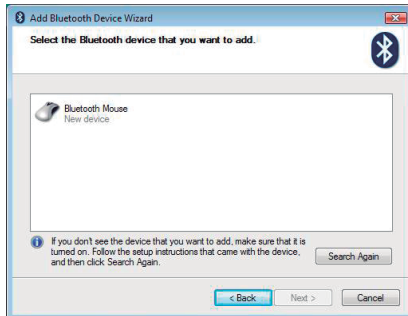


e. Please tick “ My device is set up and ready to found ” and click “ Next ”

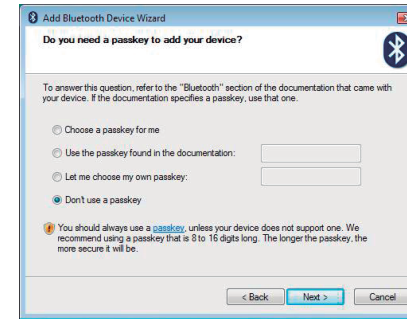


My device is set up and ready to be found.

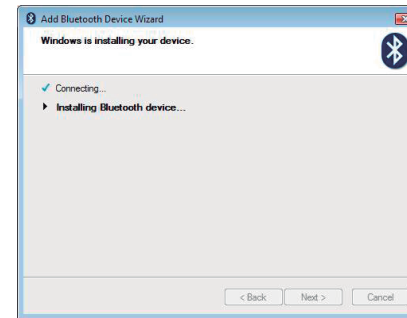
f. Choose “ Bluetooth Mouse New Device” and click “Next ”



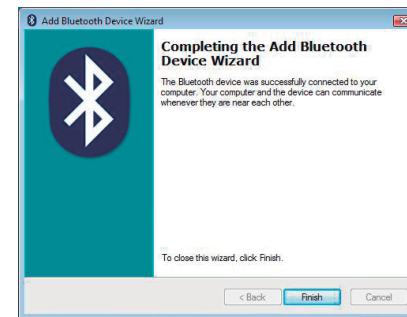
g. please tick “ Don't use a passkey ” and click “ Next ”



h.Now Bluetooth device is in connecting status.



i. System will show installment finished in dialogue box, then click “ finish”.



FCC Statement

This equipment has been tested and found to comply with the limits for a Class B digital device, pursuant to part 15 of the FCC rules. These limits are designed to provide reasonable protection against harmful interference in a residential installation. This equipment generates uses and can radiate radio frequency energy and, if not installed and used in accordance with the instructions, may cause harmful interference to radio communications. However, there is no guarantee that interference will not occur in a particular installation. If this equipment does cause harmful interference to radio or television reception, which can be determined by turning the equipment off and on, the user is encouraged to try to correct the interference by one or more of the following measures:

- Reorient or relocate the receiving antenna.
- Increase the separation between the equipment and receiver.
- Connect the equipment into an outlet on a circuit different from that to which the receiver is connected.
- Consult the dealer or an experienced radio/TV technician for help.

FCC Radiation Exposure Statement

This device complies with Part 15 of FCC RF Rules. Operation is subject to the following two conditions:

- 1) this device may not cause interference and
- 2) this device must accept any interference, including interference that may cause undesired operation of the device.