

802.11b/g USB Dongle (ARG-U25g WLAN USB adapter)

型號: ARG-U25g 廠牌: ARGtek

Before you proceed with the installation, please notice the following descriptions.

**Note 1: The following installation was operated under Windows XP. (Procedures are similar for Windows 98SE/Me/2000.)**

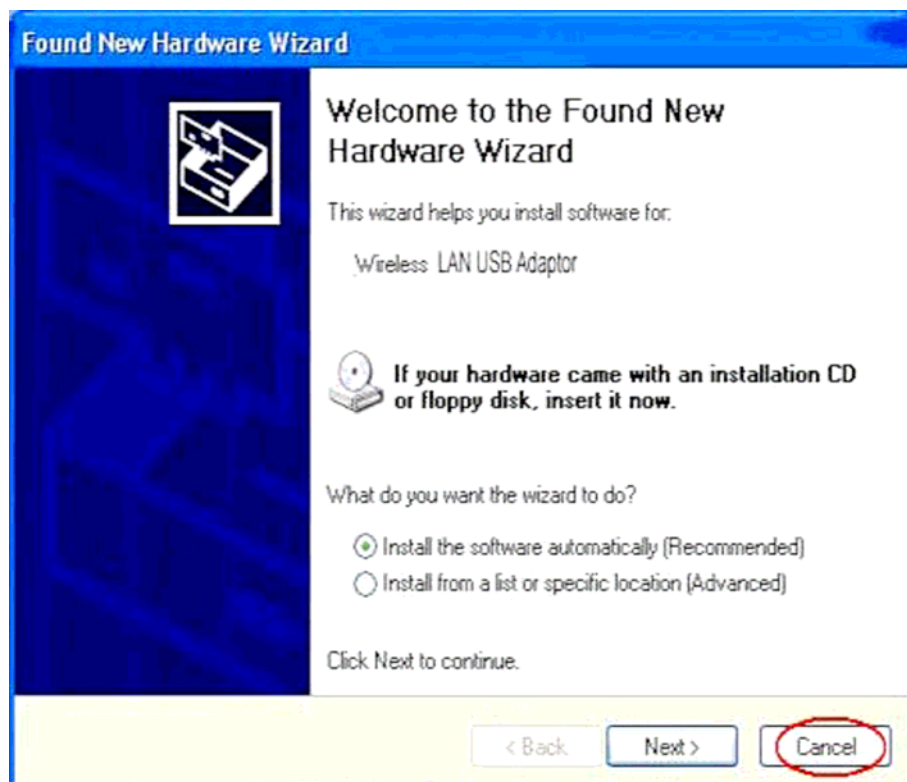
**Note 2: If you have installed the WLAN USB driver & utility before, please uninstall the old version first.**



**Note 3: Double Click the RTL8187B CD-ROM and click  setup.exe to begin installation**

## 1. Installation

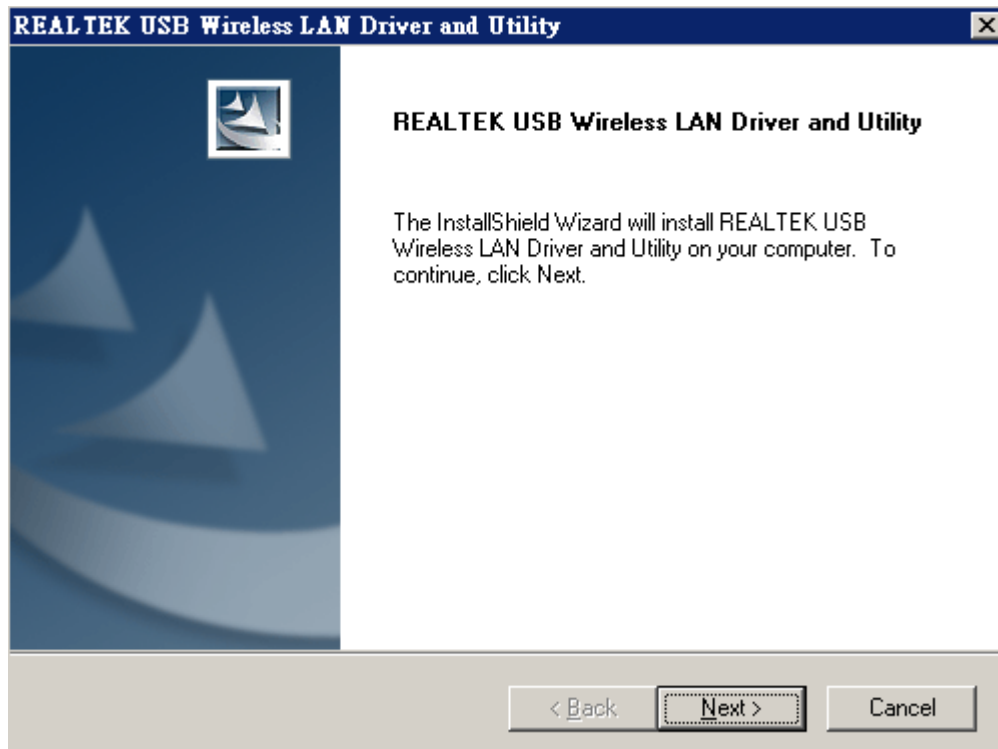
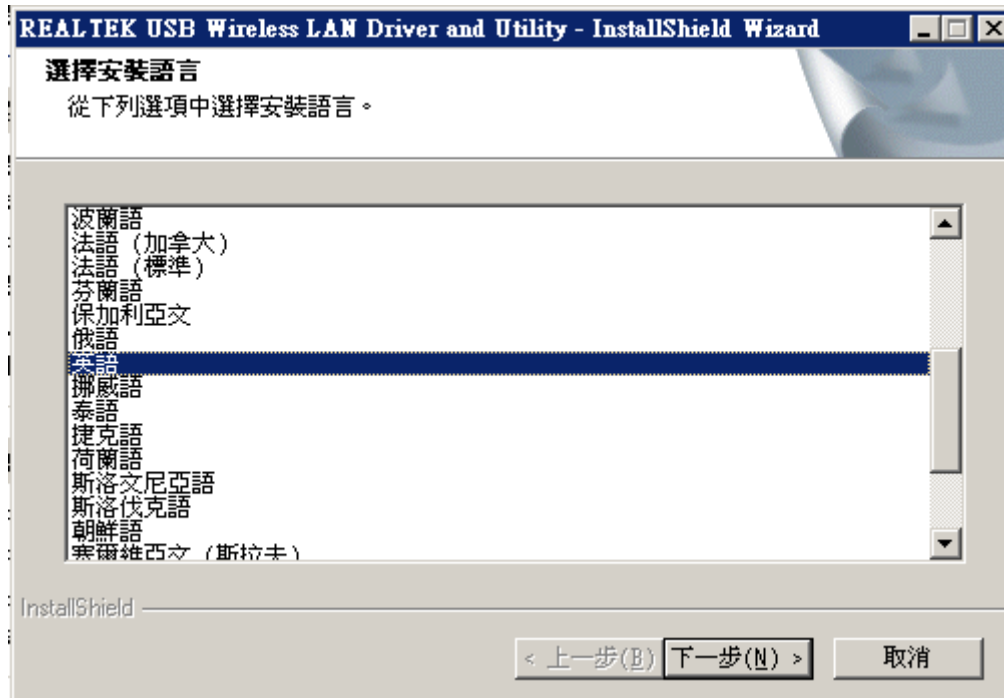
1. If you insert the Wireless LAN USB Adaptor into your computer USB port after ``installing the software program from the CD, then the following window pops up.
2. Click **Cancel**.



3. Choose a set up language.
4. Click **Next** to process the installation. .

802.11b/g USB Dongle (ARG-U25g WLAN USB adapter)

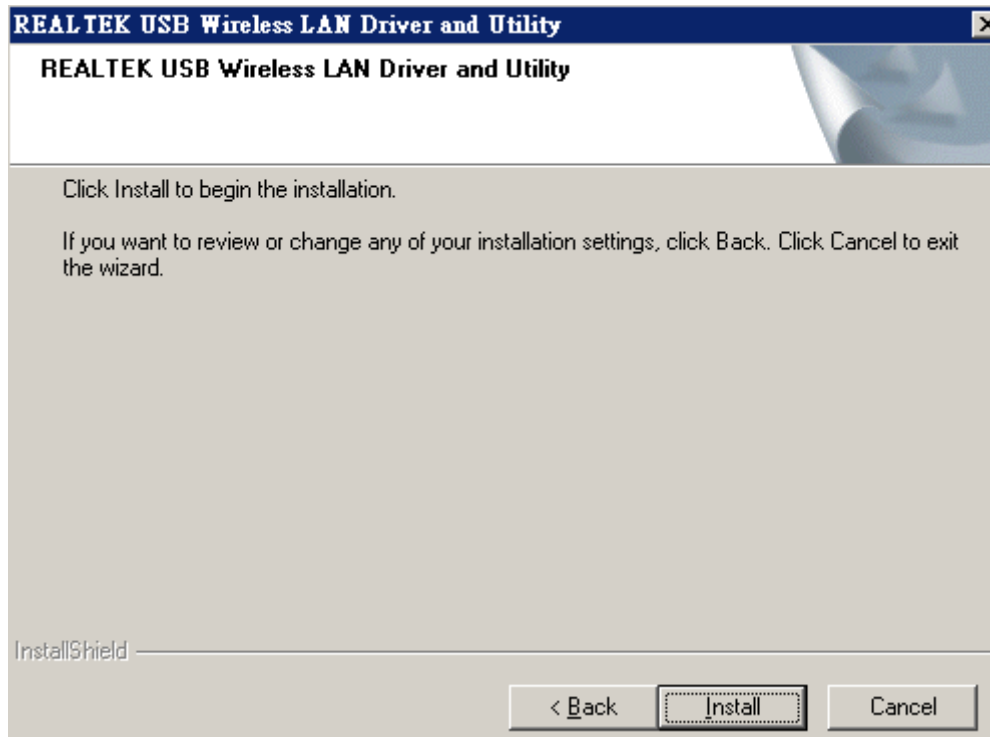
型號: ARG-U25g 廠牌: ARGtek



6. Click install to WLAN USB adaptor installation.

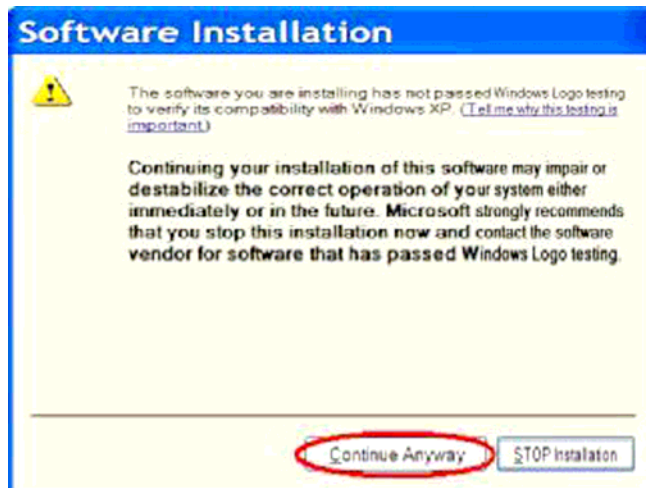
## 802.11b/g USB Dongle (ARG-U25g WLAN USB adapter)

型號: ARG-U25g 廠牌: ARGtek



7. On Windows Logo Software Installation screen, click **Continue Anyway** to continue.

Note: Not all the drivers will have this message box.



8. Click **Finish** to complete the installation.

## 802.11b/g USB Dongle (ARG-U25g WLAN USB adapter)

型號: ARG-U25g 廠牌: ARGtek



9. After setup, restart your computer



## 2. Uninstallation

A. Uninstall the WLAN USB Adaptor Driver from "Wireless Network Driver and Utility" or "Control Panel". Click "Uninstall" (or "Change/Remove") to remove Wireless LAN USB Adaptor driver.

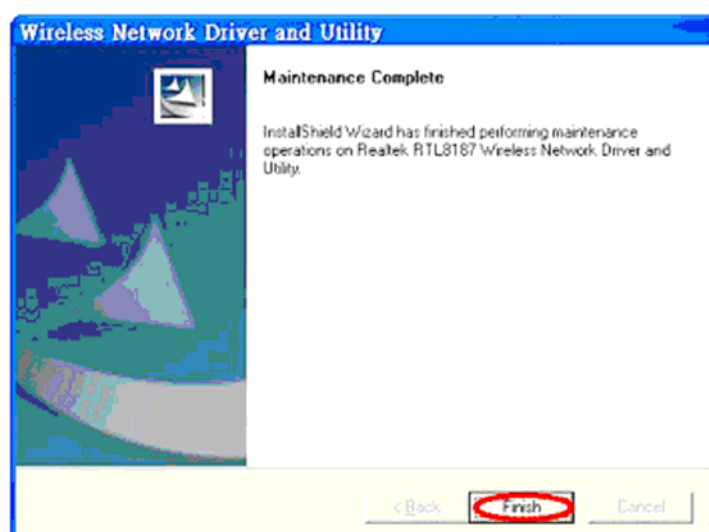
## 802.11b/g USB Dongle (ARG-U25g WLAN USB adapter)

型號: ARG-U25g 廠牌: ARGtek



B. Click "OK" if you want to remove Wireless LAN USB Adaptor Driver .

C. Click "Finish" to complete the uninstallation.



## Making a Basic Network Connection



---

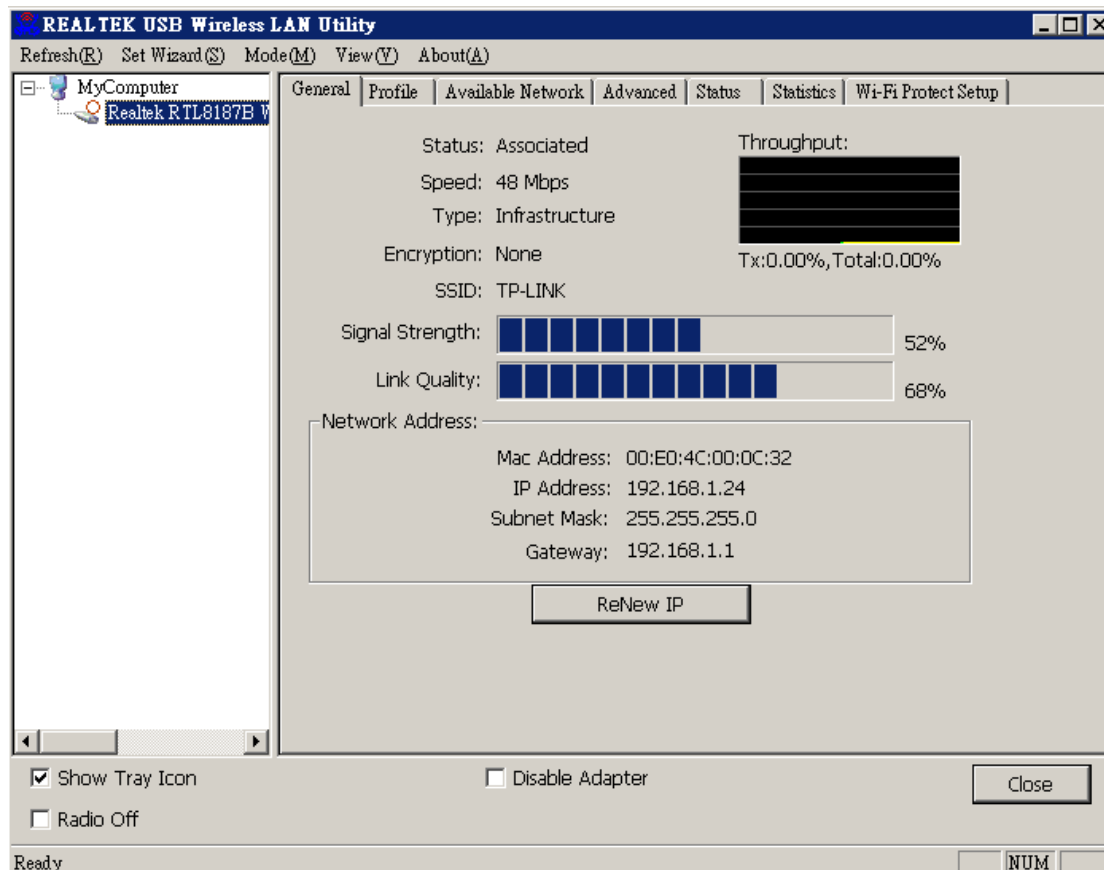
In the following instruction for making a network connection, we use the utility we provided to configure your wireless network settings.

## 802.11b/g USB Dongle (ARG-U25g WLAN USB adapter)

型號: ARG-U25g 廠牌: ARGtek

**Note:** For Windows XP users that want to configure your wireless network using this Utility, please perform the following procedures to disable your native Windows XP wireless support (Wireless Zero Configuration Service)

1. Double click the  icon on your desktop to start the utility or  in the task bar.

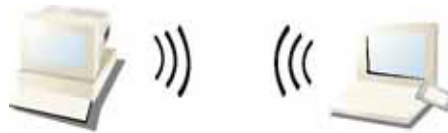


### Ad-Hoc Mode

An Ad-Hoc mode wireless network connects two computers directly without the use of a router or AP. It is also known as a peer-to-peer network. For example, we can install this wireless adapter to two computers respectively. The communication between the two computers is an Ad-Hoc mode network.



## 802.11b/g USB Dongle (ARG-U25g WLAN USB adapter)

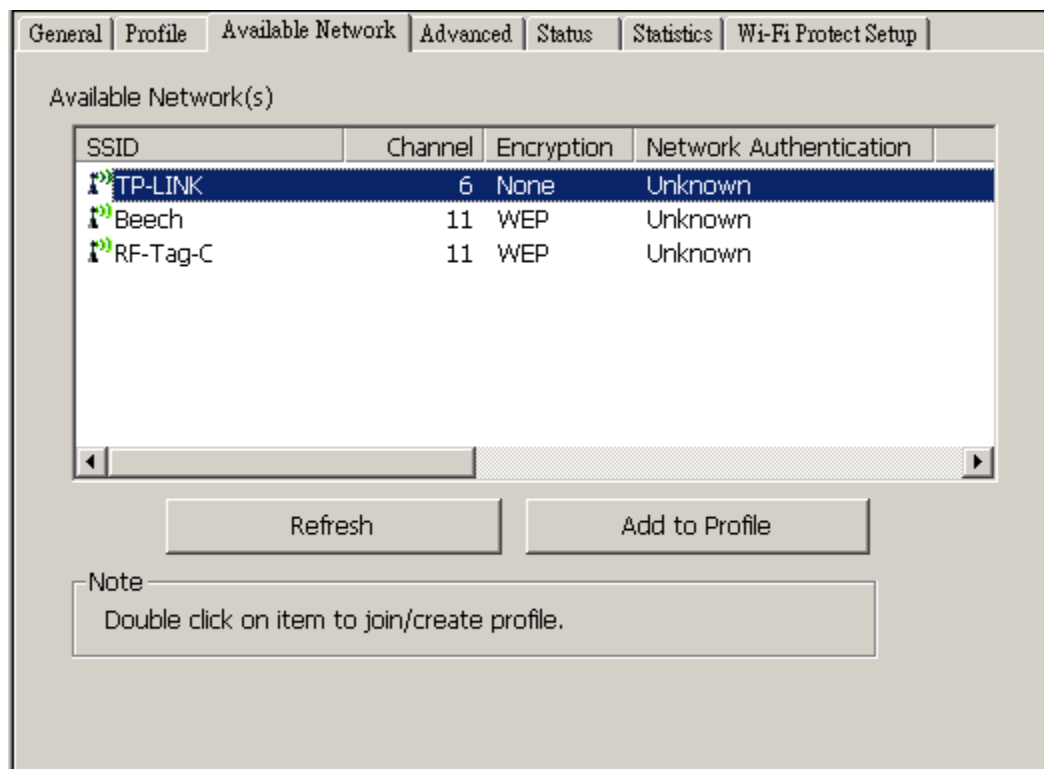
型號: ARG-U25g 廠牌: ARGtek



### Ad-Hoc Mode

#### To use this adapter in Ad-Hoc Mode

1. Double click the  icon on your desktop to start the utility or  in the task bar.
2. Click the **“Available Network”** button to scan available wireless network adapters. Double click on the network adapter that you are going to connect to.



3. Click the OK button to confirm that you are connecting to an open wireless network.

## 802.11b/g USB Dongle (ARG-U25g WLAN USB adapter)

型號: ARG-U25g 廠牌: ARGtek

**Wireless Network Properties:**

Profile Name: TP-LINK

Network Name (SSID): TP-LINK

This is a computer-to-computer (ad hoc) network; wireless access points are not used.

Channel: 6 (2437MHz)

**Wireless network security**

This network requires a key for the following:

Network Authentication: Open System

Data encryption: Disabled

ASCII  PASSPHRASE

Key index (advanced): 1

Network key:

Confirm network key:

**802.1x configure**

EAP TYPE : GTC

Tunnel :

Username :

Identity :

Password :

Certificate :

OK Cancel

4. Click OK to add this network into the profile list.

**Note:** This example is an open wireless network. If you are going to connect to a Wireless adapter with security protection, you will have to configure the encryption settings in this profile to be corresponding to the other wireless adapter. Please click on the **“Network Authentication”** drop list to select an authentication method, and then select a **“Data encryption”** type. Fill in each required blanks and click **“OK”**.



## 802.11b/g USB Dongle (ARG-U25g WLAN USB adapter)

型號: ARG-U25g 廠牌: ARGtek

**Wireless Network Properties:**

Profile Name: TP-LINK

Network Name(SSID): TP-LINK

This is a computer-to-computer(ad hoc) network; wireless access points are not used.

Channel: 6 (2437MHz)

Wireless network security  
This network requires a key for the following:  
Network Authentication: Open System  
Data encryption: Disabled

ASCII  PASSPHRASE

Key index (advanced): 1

Network key:

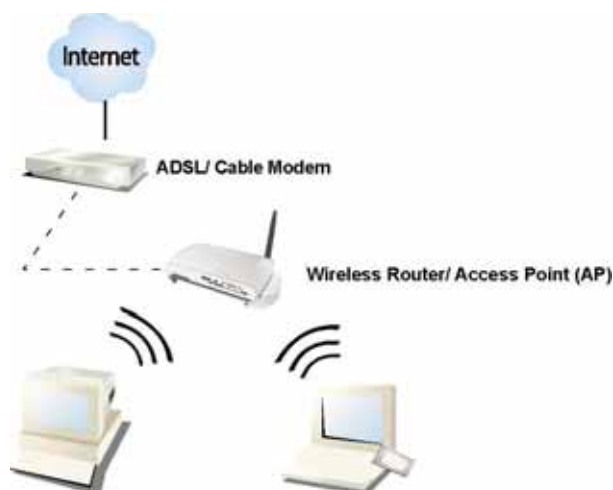
Confirm network key:

802.1x configure  
EAP TYPE : GTC  
Tunnel :  
Username :  
Identity :  
Password :  
Certificate :

OK Cancel

### Infrastructure mode

An Infrastructure Mode network contains at least one wireless client and one wireless AP or router. This client connects to Internet or intranet by communicating with this wireless AP.





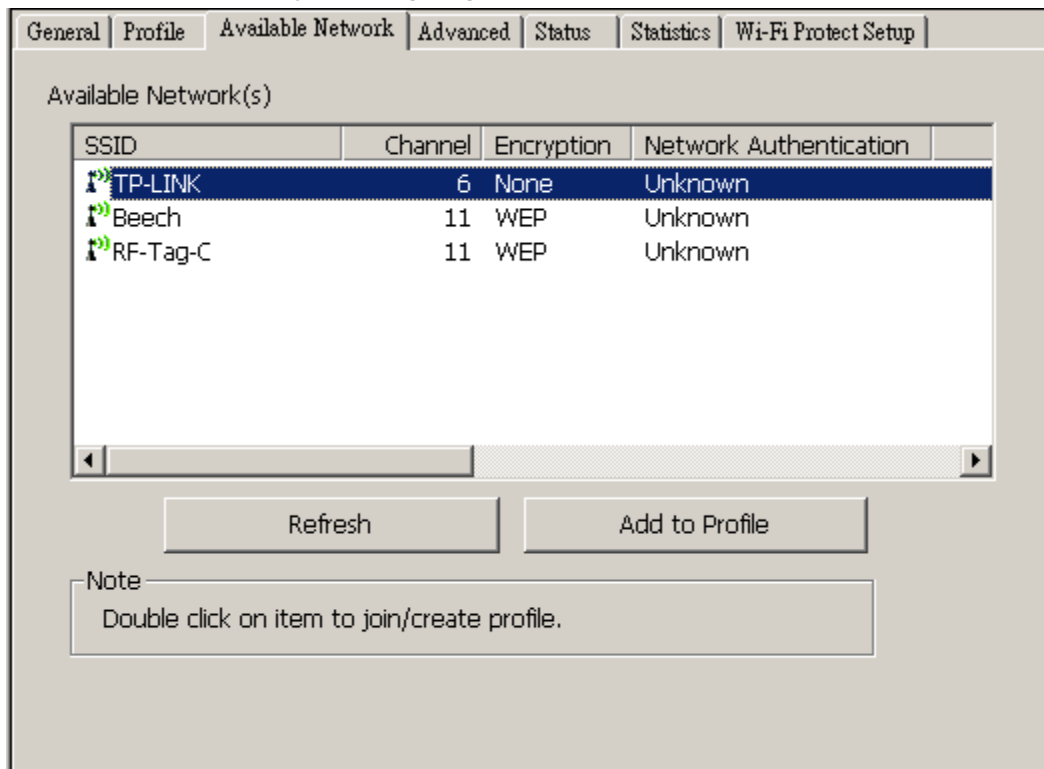
**Infrastructure Mode**

## 802.11b/g USB Dongle (ARG-U25g WLAN USB adapter)

型號: ARG-U25g 廠牌: ARGtek

To use this adapter in Infrastructure Mode:

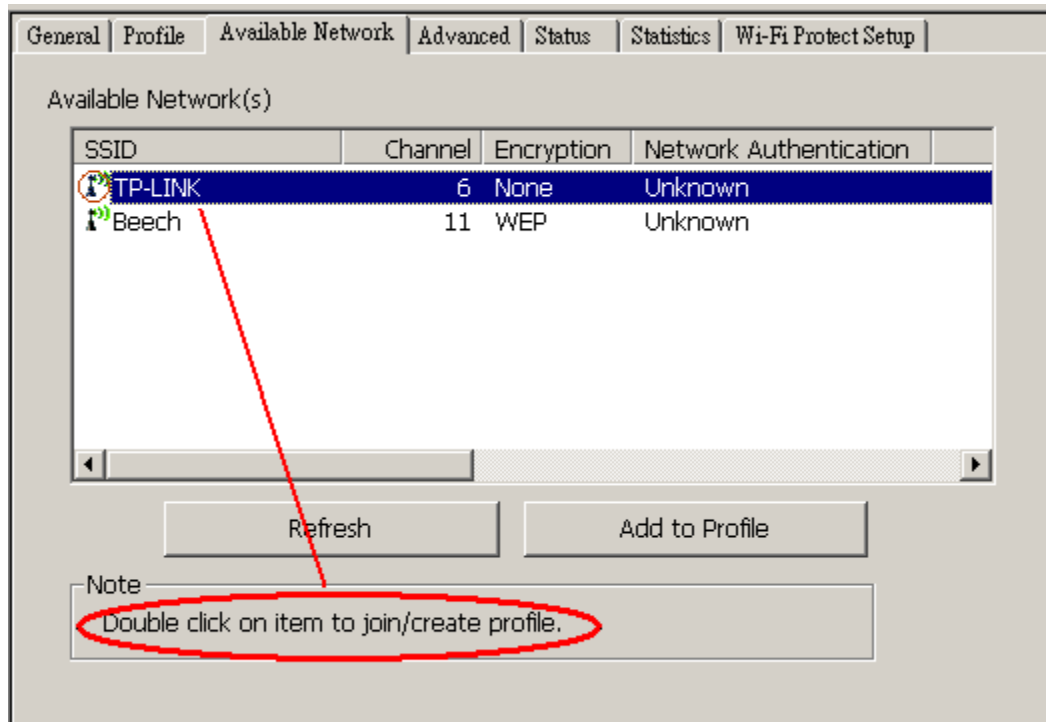
1. Double click the  icon on your desktop to start the utility or  in the task bar.
2. Click the **“Available Network”** button to scan available access points. Double click on the AP that you are going to connect to.



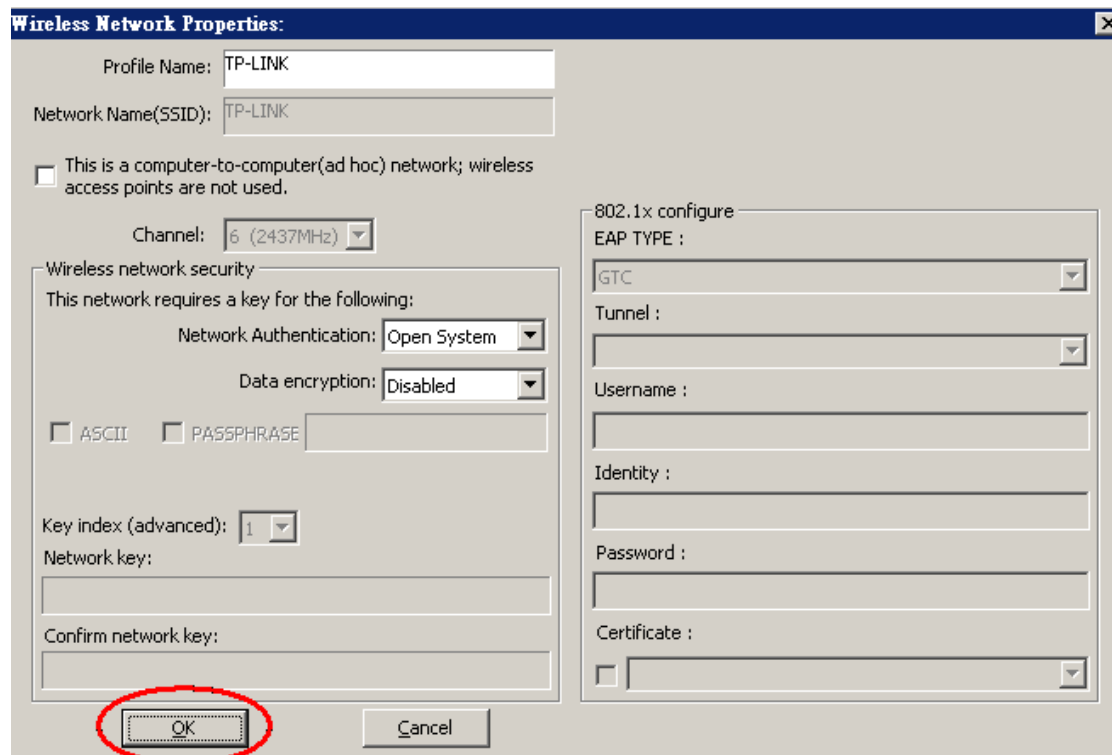
3. Double click to create profile that you are connecting to an open wireless network.

## 802.11b/g USB Dongle (ARG-U25g WLAN USB adapter)

型號: ARG-U25g 廠牌: ARGtek



4. Click **OK** to add this network into the profile list.



## 802.11b/g USB Dongle (ARG-U25g WLAN USB adapter)

型號: ARG-U25g 廠牌: ARGtek

### Note:

This example is an open wireless network. If you are going to connect to an AP with security protection, you will have to configure the encryption settings in this profile to be corresponding to your AP. Please click on the **“Network Authentication”** drop list to select an authentication method, and then select a **“Data encryption”** type. Fill in each required blanks and click **“OK”**.

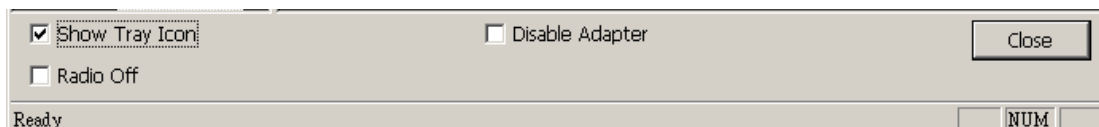
**Tip:** Windows XP and Windows 2000 users is also allowed to connect to your wireless network with the “RT-Set” setup wizard. Please refer to **“Appendix”** for more information.

## Introduction to the Wireless LAN Utility

---

**Note:** This management instruction uses Windows XP as the presumed operation system. Some functions are not supported in Windows 98se or Windows ME.

### Starting the Wireless LAN Utility



You may click on the tabs above to configure this adapter. The checkboxes below provide the following functions:

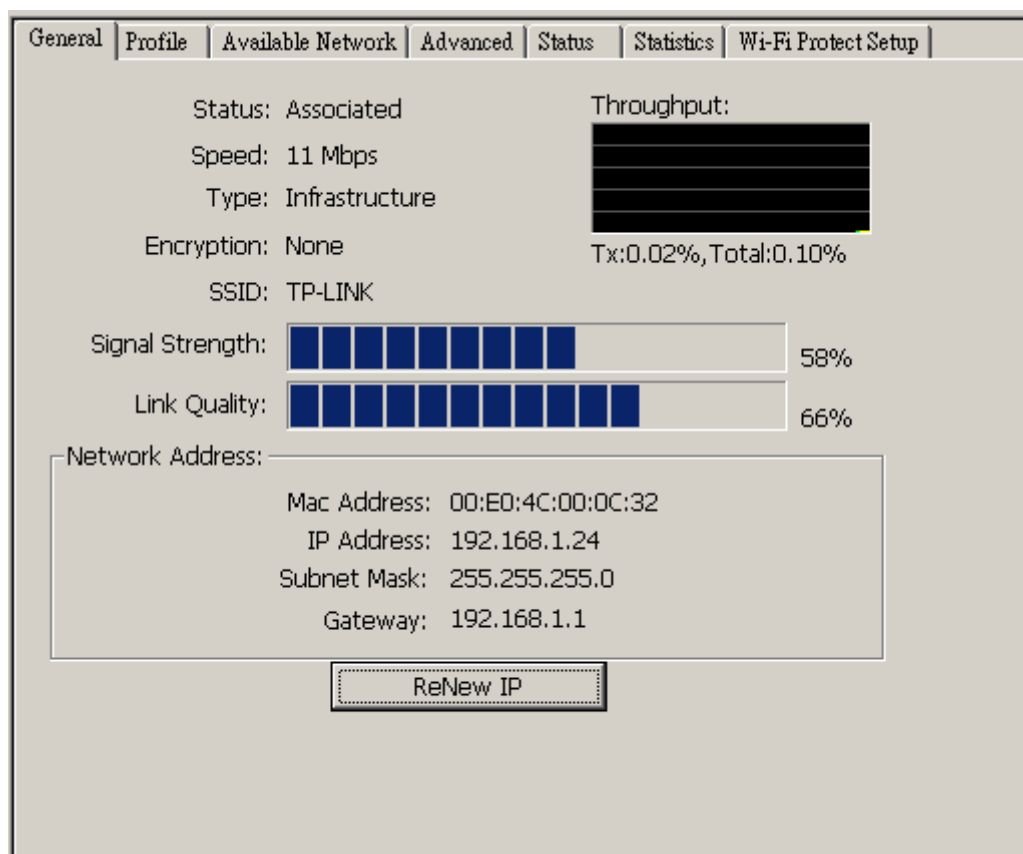
<b>Show Tray Icon</b>	Check this checkbox to show the utility icon on your system tray, which is in the notification area at the lower-right corner of the windows desktop. You may also uncheck it to remove the utility icon from system tray.
<b>Radio Off</b>	Check this checkbox to prevent this adapter from transmitting or receiving signals. Uncheck it to communicate.
<b>Disable Adapter</b>	Check this checkbox to disable this wireless adapter. Uncheck it to enable this adapter again.

## 802.11b/g USB Dongle (ARG-U25g WLAN USB adapter)

型號: ARG-U25g 廠牌: ARGtek

### General

After starting the utility, the general page pops up. This **General** tab provides the information of your current wireless network connection. You may click the **Renew IP** button to refresh those listed information.



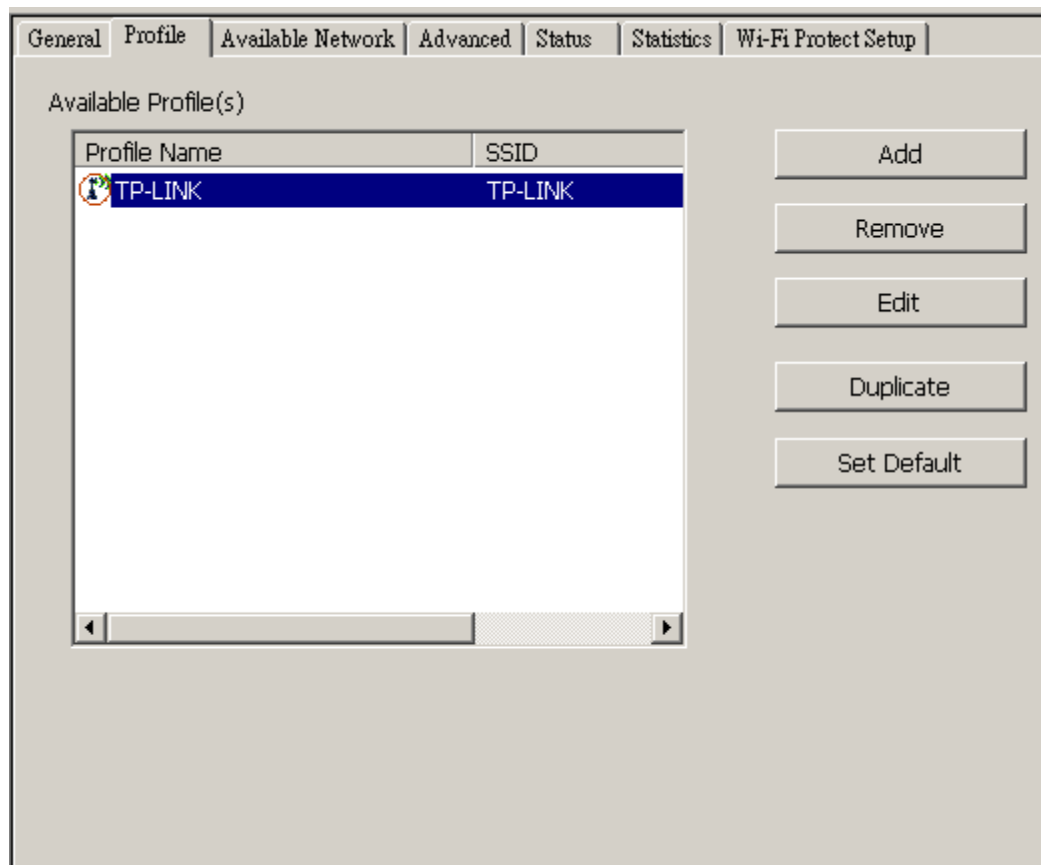
<b>Status:</b>	Check if the device associated to target network.
<b>Speed:</b>	The current connection speed
<b>Type:</b>	Infrastructure mode or Ad-Hoc mode.
<b>Encryption:</b>	The performing encryption mode for connecting to current network profile.
<b>SSID:</b>	The SSID (network name) of the connected wireless network.
<b>Signal Strength:</b>	Indicates the signal strength detected by this adapter.
<b>Link Quality</b>	Indicates the link quality of this wireless connection.
<b>Network Address:</b>	Shows the current IP addresses settings for this adapter.

## 802.11b/g USB Dongle (ARG-U25g WLAN USB adapter)

型號: ARG-U25g 廠牌: ARGtek

### Profile

The **Profile** tab lists the preferred connections. You can click the buttons beside to do configure each connection.



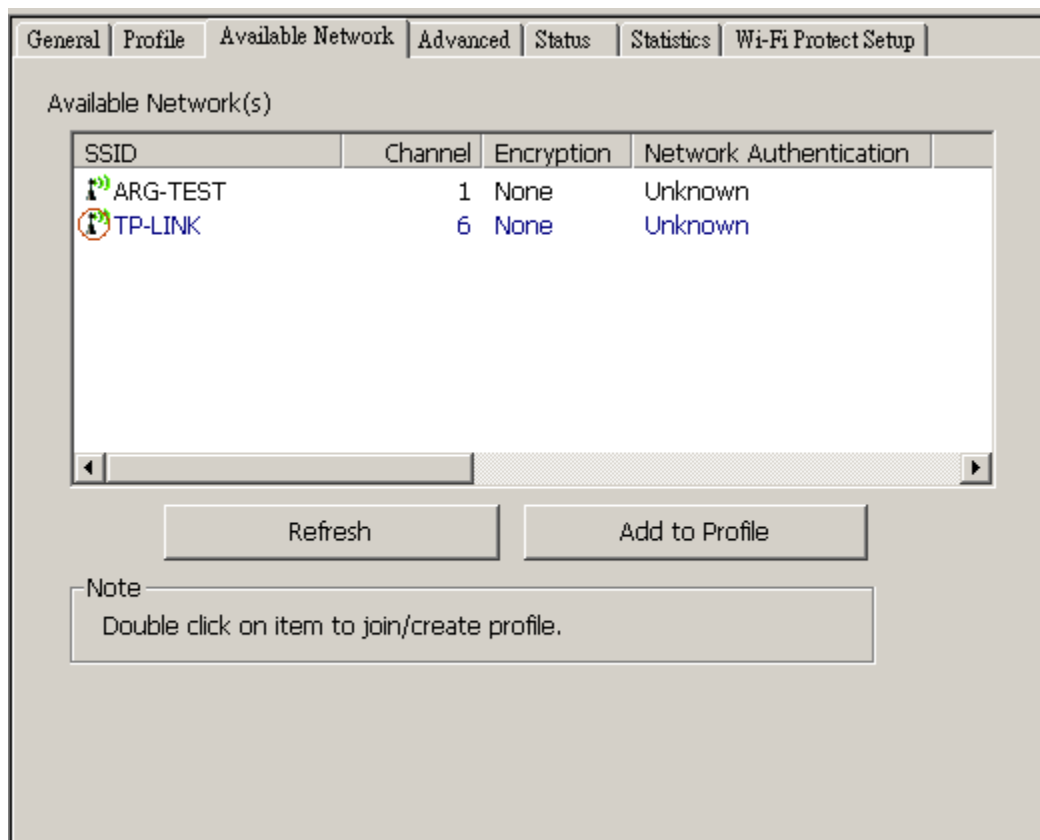
- Add** Click this button to add a connection profile for this adapter.
- Remove** To remove a connection profile, click this profile on the profile list and click this button to delete it.
- Edit** To modify the configurations for a profile, click this profile on the profile list and click this button to edit.
- Duplicate** To make a copy of a profile, click the profile that going to be copied, and click this button to copy it.
- Set Default** To select a profile as your default wireless connection, click this profile on the list and click this button. You may also double click on each profile to select it as your default wireless connection.

## 802.11b/g USB Dongle (ARG-U25g WLAN USB adapter)

型號: ARG-U25g 廠牌: ARGtek

### Available Network

This available tab lists the reachable wireless network of this adapter.



#### Refresh

Click this button to rescan available networks around the adapter.

#### Add to Profile

To add an available Network to your profile list, select an available network and click this button to add.

## 802.11b/g USB Dongle (ARG-U25g WLAN USB adapter)

型號: ARG-U25g 廠牌: ARGtek

### Advanced

This Advanced tab provides advanced configurations to this adapter. Every modification in this tab will be performed after clicking the **Apply** button. To restore the default settings of the advanced tab, click the **Set defaults** button to perform restoring.

Power Save	
<b>None</b>	Disable Power saving function.
<b>Min</b>	Minimum power consumption
<b>Max</b>	Maximum power consumption
Turbo Mode	
<b>OFF</b>	Disable turbo mode
<b>ON</b>	Enable turbo mode
<b>AUTO</b>	Enable or disable turbo automatically according to the detected environment
Fragment Threshold	
The maximum size of a packet that is going to be segmented and transmitted. Select the size from 256 to 2432(default) bytes.	
RTS Threshold	
Select the RTS Threshold form 0 to 2432(default)	
Wireless Mode	
<b>802.11g/b</b>	Connect to a 802.11b/g network (2.4GHz/54Mbps)
<b>802.11b</b>	Connect to a 802.11b network (2.4GHz/11Mbps)



## 802.11b/g USB Dongle (ARG-U25g WLAN USB adapter)

型號: ARG-U25g 廠牌: ARGtek

<b>802.11b Preamble Mode</b>
Select the preamble mode to be long, short or auto detection mode.
<b>Channel Plan</b>
Select your region from the drop list. Please note that it is necessary for you to select a correct region. Selecting an incorrect region may again the applicable law.
<b>PSP XLink Mode</b>
If you are using the PS2 or X-box for wireless connection
<b>WMM Parameter</b>
Quality of Service for better streaming bandwidth control

### Status

This tab shows the current connection status of this adapter.

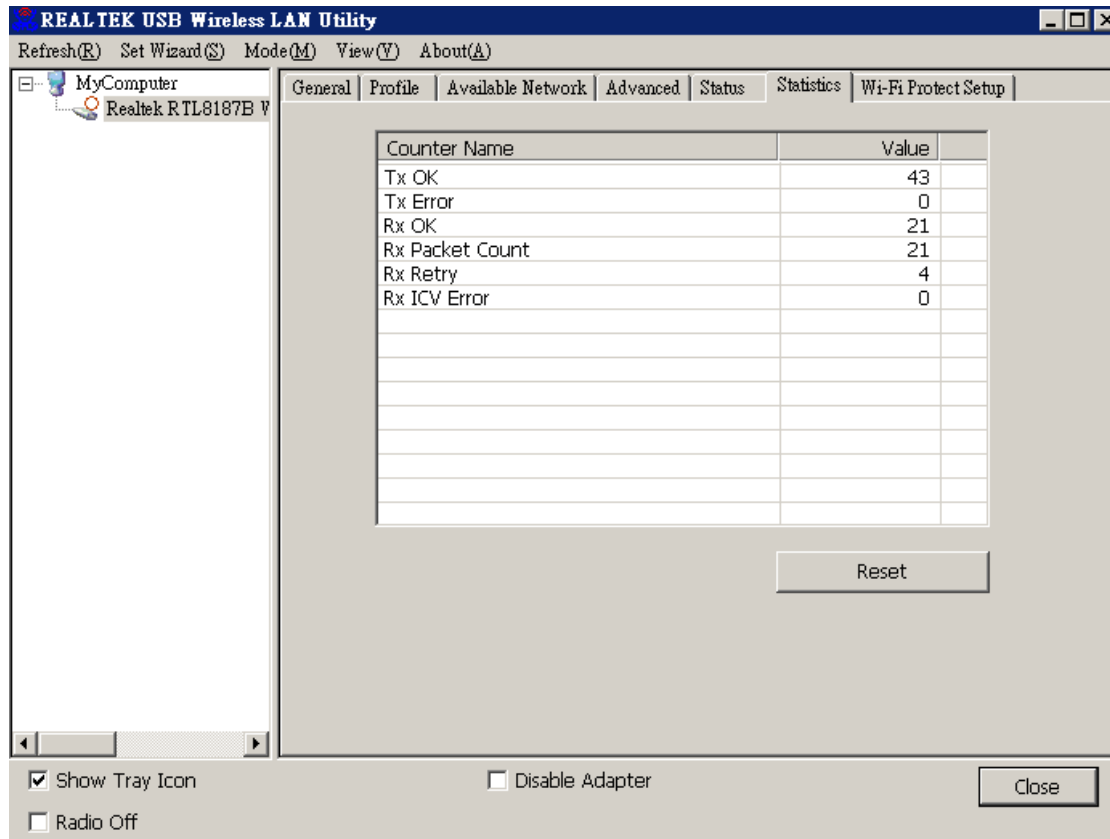
General	Profile	Available Network	Advanced	Status	Statistics	Wi-Fi Protect Setup
Manufacturer				= Realtek		
NDIS Driver Version				= 5.1097.718.2007		
Short Radio Header				= Yes		
Encryption				= Disabled		
Authenticate				= Open		
Channel Set				= FCC		
MAC Address				= 00:E0:4C:00:0C:32		
Data Rate (AUTO)				= 11 Mbps		
Channel (Frequency)				= 6 (2437 MHz)		
Status				= Associated		
SSID				= TP-LINK		
Network Type				= Infrastructure		
Power Save Mode				= None		
Associated AP MAC				= 00:19:E0:A5:A2:DC		
Up Time (hh:mm:ss)				= 0:00:16		

## 802.11b/g USB Dongle (ARG-U25g WLAN USB adapter)

型號: ARG-U25g 廠牌: ARGtek

### Statistics

See this tab to show the transmission activity record. Clicking the **Reset** button recounts the values from zero.



The screenshot shows the 'REALTEK USB Wireless LAN Utility' window with the 'Statistics' tab selected. The window title bar includes 'Refresh(R)', 'Set Wizard(S)', 'Mode(M)', 'View(V)', and 'About(A)'. The left sidebar shows 'MyComputer' and 'Realtek RTL8187B V'. The main area contains a table with the following data:

Counter Name	Value
Tx OK	43
Tx Error	0
Rx OK	21
Rx Packet Count	21
Rx Retry	4
Rx ICV Error	0

Below the table is a 'Reset' button. At the bottom of the window, there are checkboxes for 'Show Tray Icon' (checked), 'Radio Off', and 'Disable Adapter' (unchecked), along with a 'Close' button.

## 802.11b/g USB Dongle (ARG-U25g WLAN USB adapter)

型號: ARG-U25g 廠牌: ARGtek

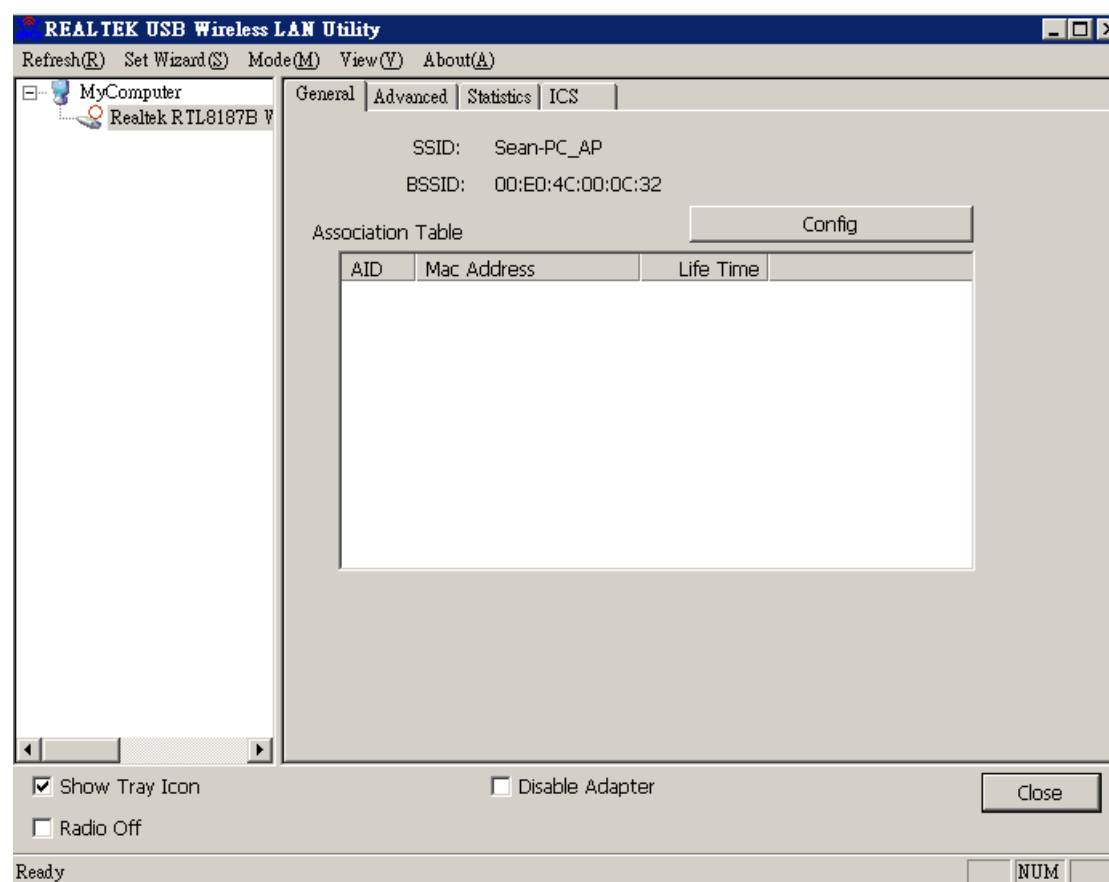
# AP mode management guide

---

## General

After configuring the adapter in AP mode, this “**General**” page shows up, which shows the general information of this AP.

- SSID:** The SSID (network name) of the wireless network constructed by this AP.
- BSSID:** The MAC address of this AP
- Config:** Click this button to change configurations to this AP
- Association Table:** Shows the information of those devices that associated with this AP including their MAC addresses and the time that they connected with this device.

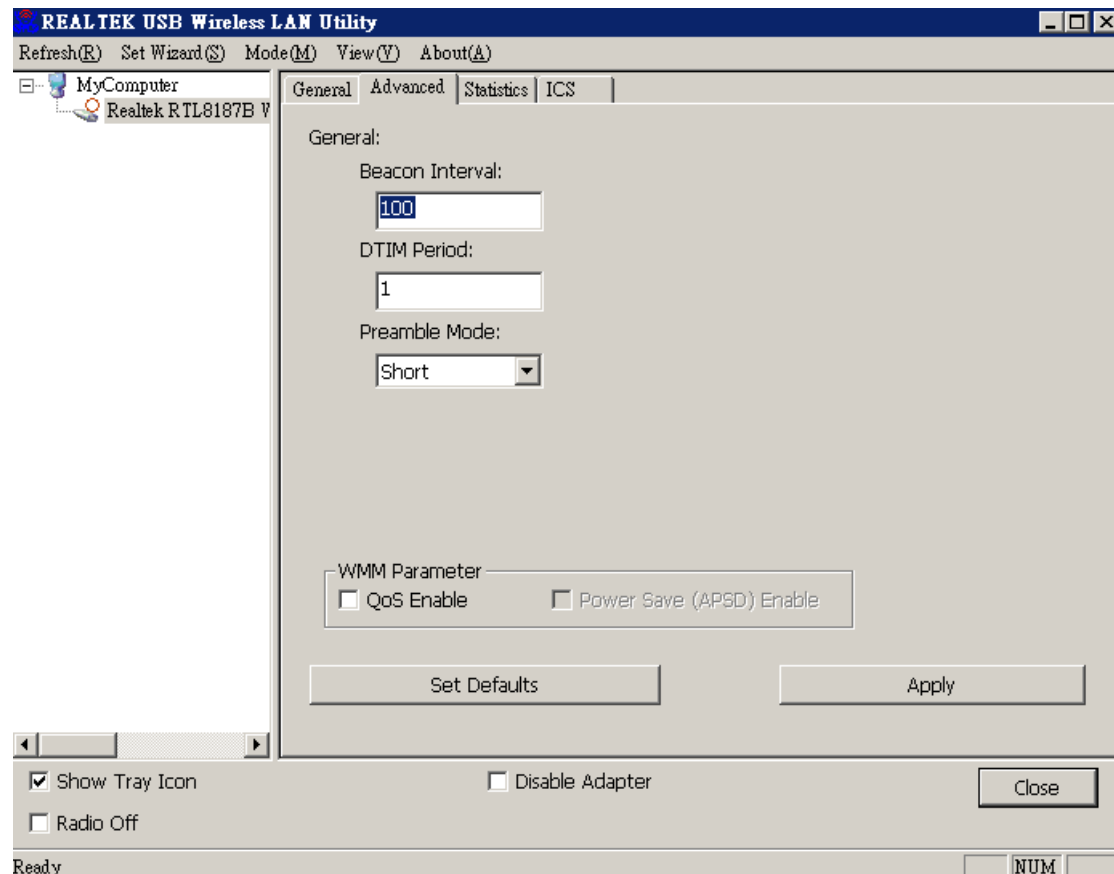


## 802.11b/g USB Dongle (ARG-U25g WLAN USB adapter)

型號: ARG-U25g 廠牌: ARGtek

### Advanced

- Beacon Interval:** Define the interval between beacons from 20~1000  
**DTIM Period:** Set the DTIM period between 1~255  
**Preamble Mode:** Click the drop list to select the preamble to be long, short or auto  
**Set Defaults:** Click this button to restore the settings above to default  
**Apply:** Click this button to execute changes.



### Statistics

See this tab to show the transmission activity record. Clicking the **“Reset”** button recounts the values from zero.

# 802.11b/g USB Dongle (ARG-U25g WLAN USB adapter)

型號: ARG-U25g 廠牌: ARGtek

The screenshot shows the 'REALTEK USB Wireless LAN Utility' window. The 'Statistics' tab is selected, displaying a table of network counters. The table has two columns: 'Counter Name' and 'Value'. The data is as follows:

Counter Name	Value
Tx OK	2091
Tx Error	0
Rx OK	28
Rx Packet Count	28
Rx Retry	1
Rx ICV Error	0

Below the table is a 'Reset' button. At the bottom of the window, there are three checkboxes: 'Show Tray Icon' (checked), 'Radio Off' (unchecked), and 'Disable Adapter' (unchecked). A 'Close' button is located to the right of these checkboxes. The status bar at the bottom left shows 'Ready' and the bottom right shows 'NUM'.

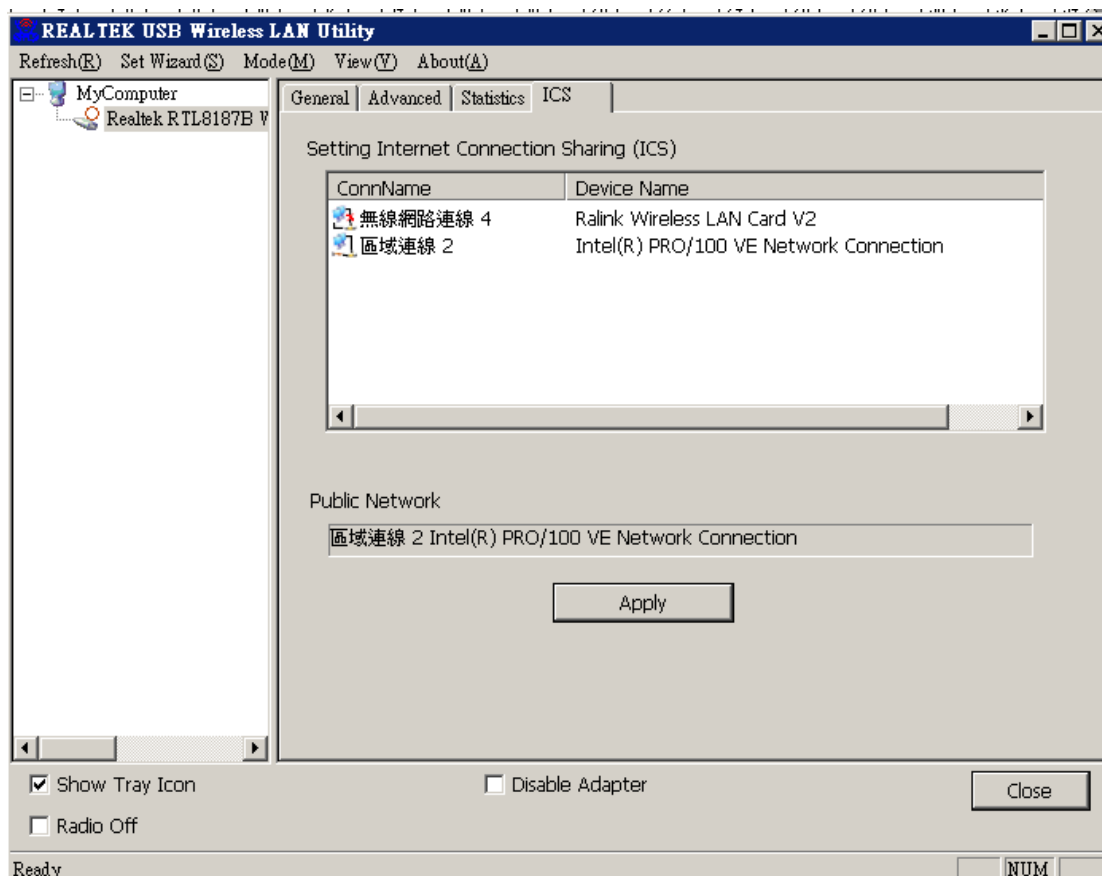
## 802.11b/g USB Dongle (ARG-U25g WLAN USB adapter)

型號: ARG-U25g 廠牌: ARGtek

### Internet Connection Sharing (ICS)

This page allows users to select the adapter for connect to public network.

Please click on the device that are used for connecting to public network and click the "Select" button, and then click the "Apply" button to execute.



### 產品: 802.11b/g USB Dongle (ARG-U25g WLAN USB adapter)

根據交通部低功率管理辦法規定:

第十二條 經型式認證合格之低功率射頻電機，非經許可、公司、商號或使用者均不得擅自變更頻率，加大功率或變更原設計之特性及功能。

第十四條 低功率射頻電機之使用不得影響飛航安全及干擾合法通信;經發現有干擾現象時，應立即停用，並改善至無干擾時方得繼續使用。

前項合法通信，指依電信規定作業之無線電信。低功率射頻電機須忍受合法通信或工業、科學及醫療用電波輻射性電機設備之干擾

### **Federal Communication Commission Interference Statement**

This equipment has been tested and found to comply with the limits for a Class B digital device, pursuant to Part 15 of the FCC Rules. These limits are designed to provide reasonable protection against harmful interference in a residential installation. This equipment generates, uses and can radiate radio frequency energy and, if not installed and used in accordance with the instructions, may cause harmful interference to radio communications. However, there is no guarantee that interference will not occur in a particular installation. If this equipment does cause harmful interference to radio or television reception, which can be determined by turning the equipment off and on, the user is encouraged to try to correct the interference by one of the following measures:

- Reorient or relocate the receiving antenna.
- Increase the separation between the equipment and receiver.
- Connect the equipment into an outlet on a circuit different from that to which the receiver is connected.
- Consult the dealer or an experienced radio/TV technician for help.

This device complies with Part 15 of the FCC Rules. Operation is subject to the following two conditions: (1) This device may not cause harmful interference, and (2) this device must accept any interference received, including interference that may cause undesired operation.

FCC Caution: Any changes or modifications not expressly approved by the party responsible for compliance could void the user's authority to operate this equipment.

### **IMPORTANT NOTE:**

#### **FCC Radiation Exposure Statement:**

This equipment complies with FCC radiation exposure limits set forth for an uncontrolled environment. This equipment should be installed and operated with minimum distance 20cm between the radiator & your body.

This transmitter must not be co-located or operating in conjunction with any other antenna or transmitter.

You must use the Ferrite core and coil the USB cable around it twice.

