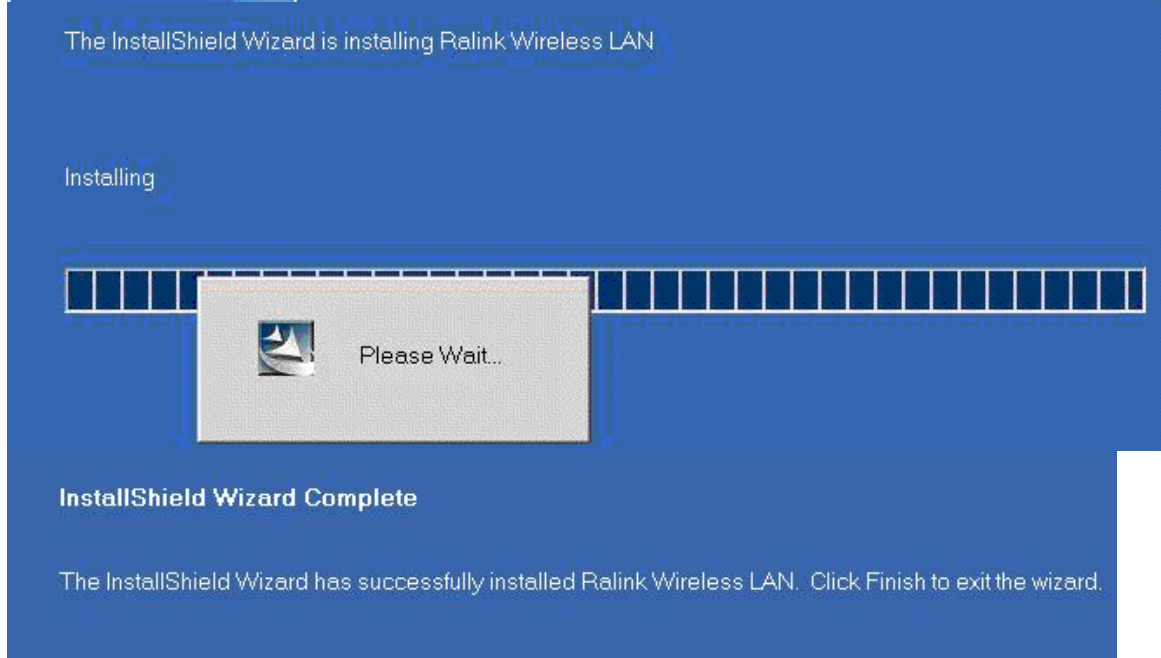
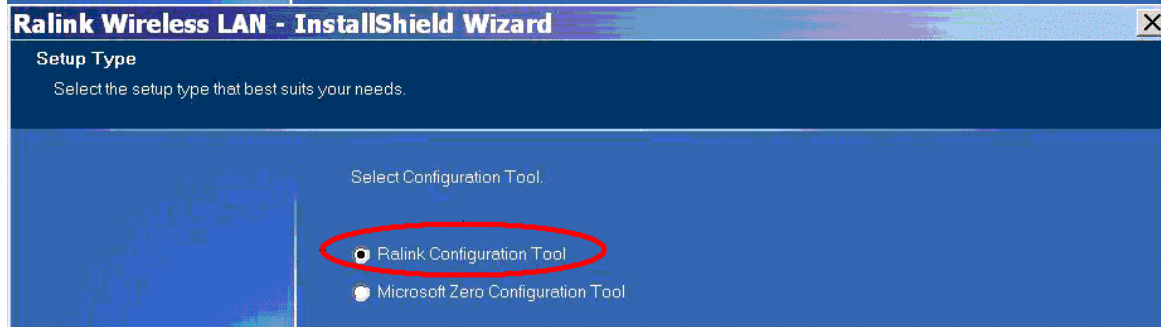
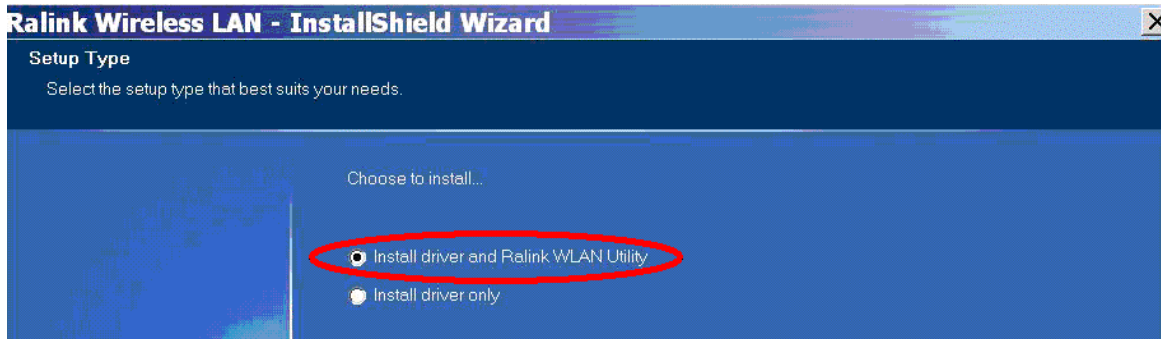


802.11b/g/n USB dongle
AWUN3121 / ARGtek
Quick User Manual Guide

Step 1: RaUI (Ralink Utility) Installation



You can double click a small Ralink icon appears in the notifications area of the

802.11b/g/n USB dongle
AWUN3121 / ARGtek

taskbar to maximize the dialog box or you may also click the mouse's right button to close RaUI.

Step 2: Start RaUI (Ralink Utility)

When starting RaUI, the system will connect to the AP with best signal strength without setting a profile or matching a profile setting. The AP list includes most used fields, such as SSID, network type, channel used, wireless mode, security status and the signal percentage.

The screenshot displays the RaUI interface with the following components:

- Navigation Bar:** Network, Advanced, Statistics, WMM, WPS, Radio on/off, About, Help.
- AP List Table:**

SSID	Channel	Signal	AP List	Signal %
corega-ryan	1	b g n	15%	15%
dlink	6	b g n	15%	15%
Emallfly_02	11	b g n	34%	34%
hong	6	b g n	24%	24%
ken_chen	1	b g n	15%	15%
SMC	6	b g n	44%	44%

Connection Statistics (SMC):

- Status: SMC <--> 00-13-F7-8E-63-93
- Extra Info: Link is Up [TxPower:100%]
- Channel: 6 <--> 2437 MHz; central channel : 6
- Authentication: Open
- Encryption: NONE
- Network Type: Infrastructure
- IP Address: 192.168.2.102
- Sub Mask: 255.255.255.0
- Default Gateway: 192.168.2.1

Performance Metrics:

- Link Quality: 88%
- Signal Strength 1: 54%
- Signal Strength 2: 10%
- Noise Strength: 26%
- Transmit Link Speed: 26.0 Mbps
- Throughput: 43.376 Kbps
- Receive Link Speed: 39.0 Mbps
- Throughput: 46.084 Kbps

1. Functional Section:

Profile page: The list keeps a record of your favorite wireless settings or others hotspots. You can activate either one on the preference list for quick connection.

802.11b/g/n USB dongle AWUN3121 / ARGtek

The screenshot displays the software interface for the AWUN3121 / ARGtek USB dongle. The top navigation bar includes icons for Profile, Network, Advanced, Statistics, WMM, WPS, Radio on/off, and About. The Profile List window shows a table with one entry: PROF1 with SSID SMC. Below the table are buttons for Add, Edit, Delete, and Activate. The System Config window is open, showing configuration options for the selected profile. The Profile Name is PROF1 and the SSID is SMC. The Network Type is set to Infrastructure, and the Tx Power is set to Auto. The Power Save Mode is set to CAM, and the PSM is also selected. The RTS Threshold is 0 and the Fragment Threshold is 256. The OK and Cancel buttons are at the bottom.

Profile List

Profile Name	SSID
PROF1	SMC

System Config

Profile Name >> PROF1
SSID >> SMC

Network Type >> Infrastructure
Tx Power >> Ad hoc
Preamble >> Infrastructure

Power Save Mode >> CAM PSM

RTS Threshold 0 2347
 Fragment Threshold 256 2346

OK Cancel

802.11b/g/n USB dongle AWUN3121 / ARGtek

Advanced page:

Wireless mode >> 2.4G

Enable CCX (Cisco Compatible eXtensions)

- Turn on CCKM
- Enable Radio Measurements
- Non-Serving Channel Measurements limit: 250 ms(0-2000)

Enable TX Burst

Enable TCP Window Size

Fast Roaming at -70 dBm

Show Authentication Status Dialog

Select Your Country Region Code

11B/G >> 5: CH1-14

- 0: CH1-11
- 1: CH1-13
- 2: CH10-11
- 3: CH10-13
- 4: CH14
- 5: CH1-14
- 6: CH3-9
- 7: CH5-13

Apply

Status >> 5: CH1-14

Extra Info >> 6: CH3-9

Channel >> 7: CH5-13

Authentication >> Open

Link Quality >> 90%

Signal Strength 1 >> 55%

Signal Strength 2 >> 5%

Noise Strength >> 26%

Statistics page:

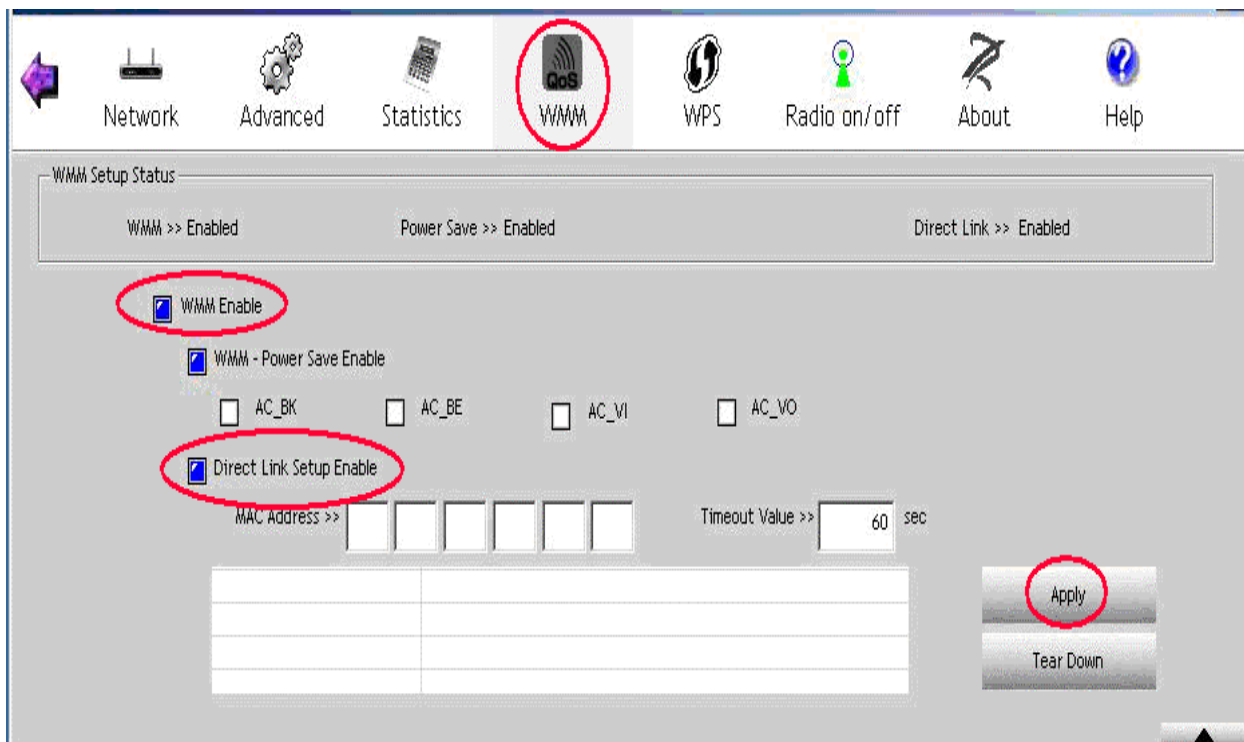
Transmit Receive

Frames Received Successfully	=	797
Frames Received With CRC Error	=	4407
Frames Dropped Due To Out-of-Resource	=	0
Duplicate Frames Received	=	0

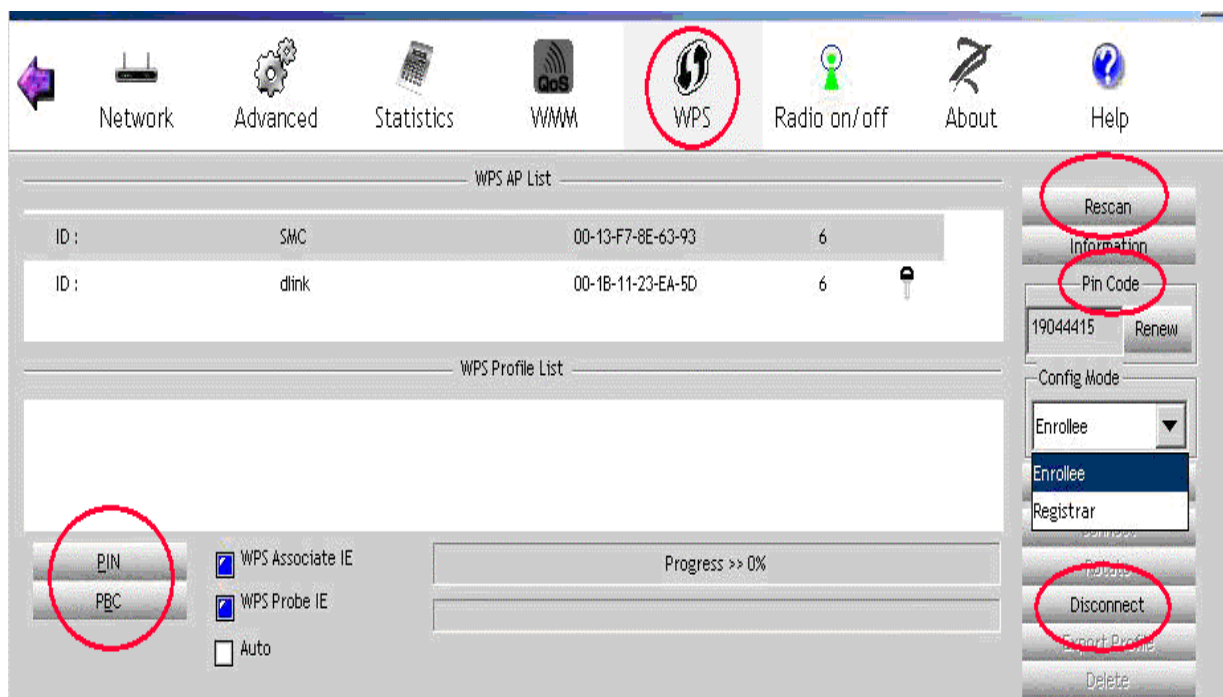
Reset Counter

WMM page:

802.11b/g/n USB dongle
AWUN3121 / ARGtek



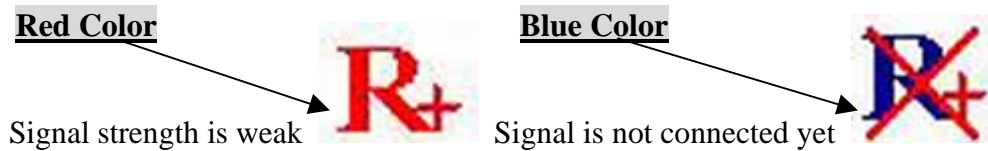
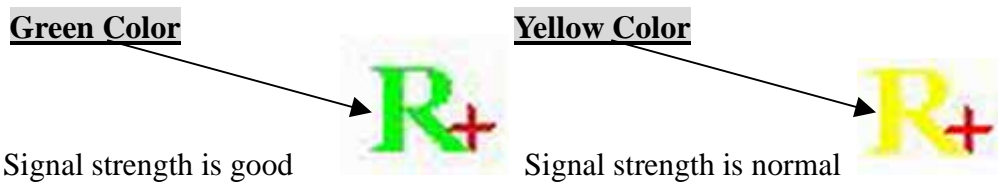
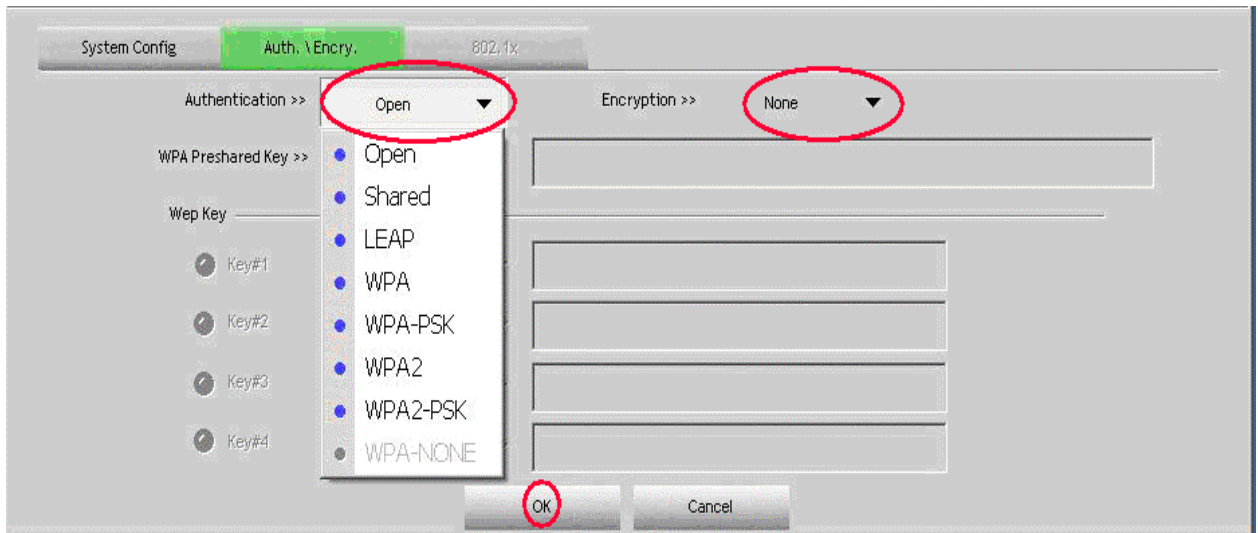
WPS page:



2. Status Section:

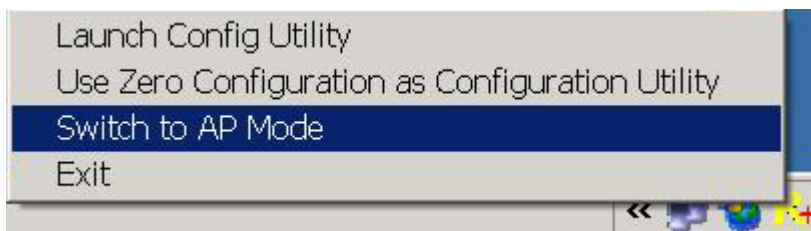
Authentication Status

802.11b/g/n USB dongle
AWUN3121 / ARGtek



3: Software AP Mode

Click mouse's right button on Ralink icon in system tray.



You are about to see the AP utility

802.11b/g/n USB dongle
AWUN3121 / ARGtek

Ralink Wireless Utility

Config | Access Control | Mac Table | Event Log | Statistics | About

SSID: SoftAP-26 Channel: 1

Wireless Mode: 2.4G <- Use Mac Address Security Setting

Country Region Code: 2.4GHz 0: CH1-11

No forwarding among wireless clients
 Hide SSID
 Allow BW 40 MHz

Beacon (ms): 100

TX Power: 100 %

Idle time(60 - 3600)(s): 300

Default Cancel Apply

Help

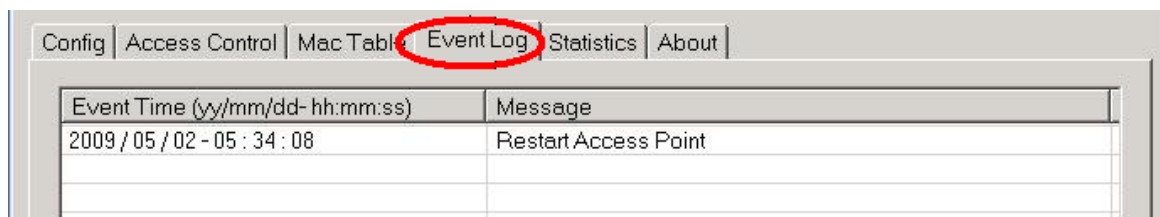
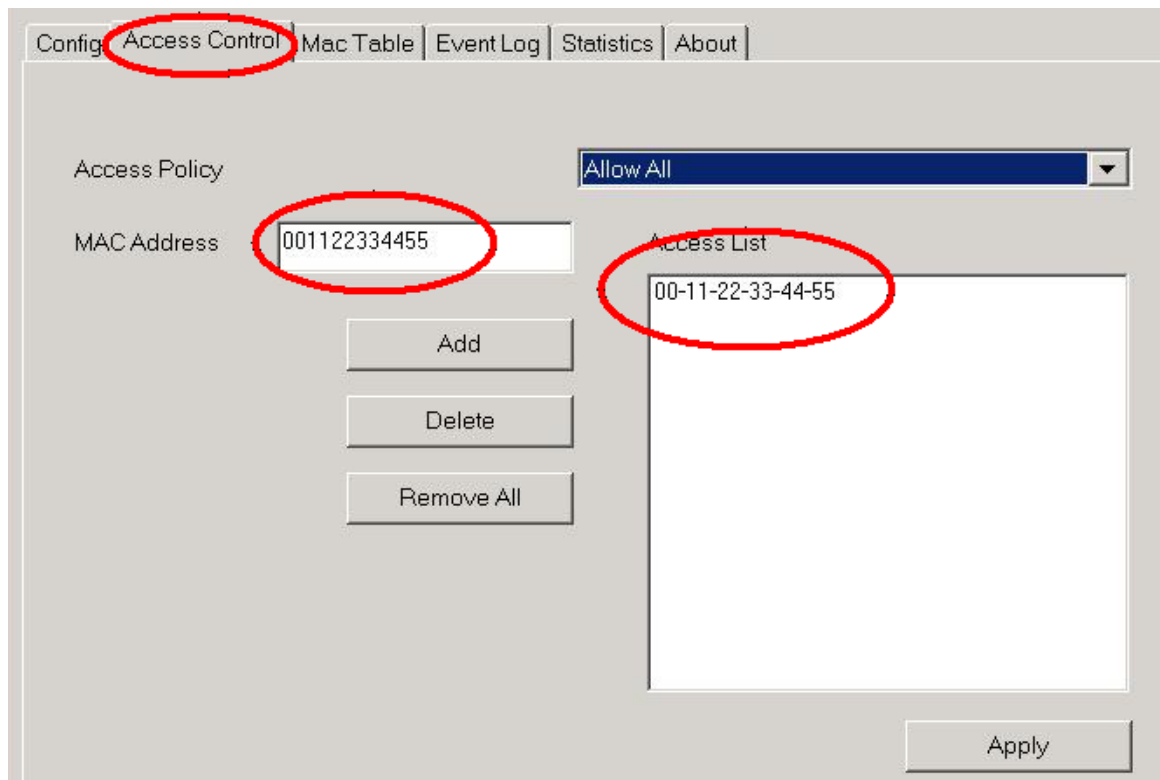
Config | **Access Control** | Mac Table | Event Log | Statistics | About

Access Policy: Disable

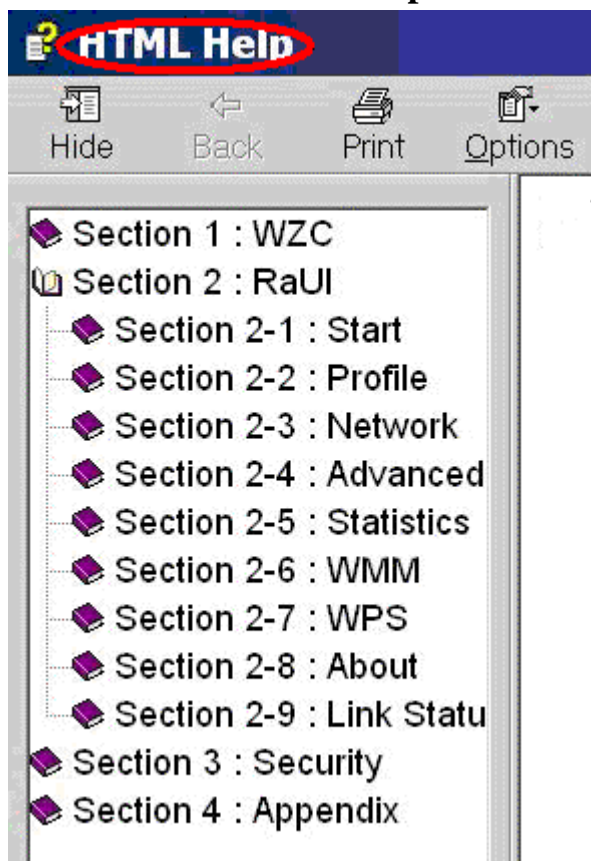
MAC Address: [Empty]

Dropdown options: Disable, Allow All, Reject All

802.11b/g/n USB dongle
AWUN3121 / ARGtek



4: For more information please refer to HTML Help in Help Page



802.11b/g /n USB dongle
AWUN3121 / ARGtek

This equipment has been tested and found to comply with the limits for a class B digital device, pursuant to part 15 of the FCC rules. These limits are designed to provide to provide reasonable protection against harmful interference in a residential installation. This equipment generates, uses and can radiate radio frequency energy and, if not installed and used in accordance with the installation. , May cause harmful interference to radio communication. However, there is no guarantee that interference
Will not occur in a particular installation. if this equipment does cause harmful interference to radio or television reception, which can be determined by turning the equipment off and on, the user is encouraged to try to correct the interference by one or more of the following measures:

- Reorient or relocate the receiving antenna
- Increase the separation between the equipment and receiver
- Connect the equipment into an outlet on a circuit different from that to which the receiver is connected
- Consult the dealer or an experienced radio / TV technician for help

You are cautioned that changes or modifications not expressly approved by the party responsible for compliance could void your authority to operate the equipment.

FCC RF radiation exposure statement:

This transmitter must not be co-located or operating in conjunction with any other antenna or transmitter.