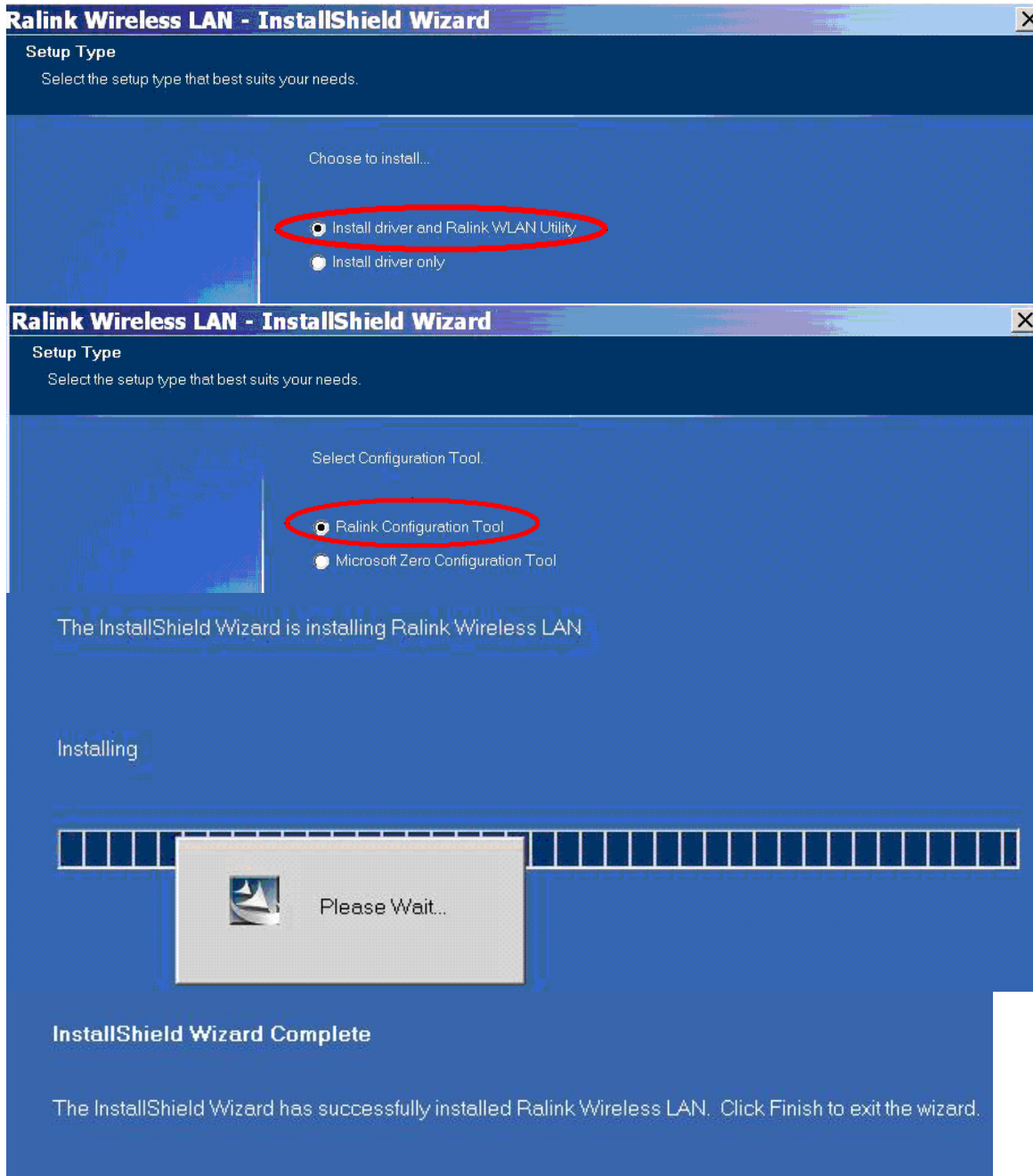


Quick User Manual Guide (PLAM PLUS/GSKY PALM)

Step 1: RaUI (Ralink Utility) Installation



You can double click a small Ralink icon appears in the notifications area of the taskbar to maximize the dialog box or you may also click the mouse's right button to

close RaUI.

Step 2: Start RaUI (Ralink Utility)

When starting RaUI, the system will connect to the AP with best signal strength without setting a profile or matching a profile setting. The AP list includes most used fields, such as SSID, network type, channel used, wireless mode, security status and the signal percentage.

The screenshot displays the RaUI interface with the following components:

- Navigation Bar:** Network, Advanced, Statistics, WMM, WPS, Radio on/off, About, Help.
- AP List Table:**

| SSID | Channel | Signal | AP List | Signal % |
|-------------|---------|--------|---------|----------|
| corega-ryan | 1 | b g n | 📶 | 15% |
| dlink | 6 | b g n | 📶 | 15% |
| Emallfly_02 | 11 | b g n | 📶 | 34% |
| hong | 6 | b g n | 📶 | 24% |
| ken_chen | 1 | b g n | 📶 | 15% |
| SMC | 6 | b g n | 📶 | 44% |

Connection Details (SMC):

- Status: SMC <--> 00-13-F7-8E-63-93
- Extra Info: Link is Up [TxPower: 100%]
- Channel: 6 <--> 2437 MHz; central channel : 6
- Authentication: Open
- Encryption: NONE
- Network Type: Infrastructure
- IP Address: 192.168.2.102
- Sub Mask: 255.255.255.0
- Default Gateway: 192.168.2.1

Performance Metrics:

- Link Quality: 88%
- Signal Strength 1: 54%
- Signal Strength 2: 10%
- Noise Strength: 26%
- Transmit Link Speed: 26.0 Mbps
- Throughput: 43.376 Kbps
- Receive Link Speed: 39.0 Mbps
- Throughput: 46.084 Kbps

1. Functional Section:

Profile page: The list keeps a record of your favorite wireless settings or others hotspots. You can activate either one on the preference list for quick connection.

Profile

Network

Advanced

Statistics

WMM

WPS

Radio on/off

About

Profile List

| Profile Name | SSID | Actions |
|--------------|------|---------|
| PROF1 | SMC | |

Profile Name >> PROF1
SSID >> SMC
Network Type >> Infrastructure
Authentication >> Open
Encryption >> None
Use 802.1x >> NO
Tx Power >> Auto
Channel >> Auto
Power Save Mode >> CAM
RTS Threshold >> n/a
Fragment Threshold >> n/a

Add

Edit

Delete

Activate

System Config

Auth. \ Encry.

802.1x

Profile Name >> PROF1

SSID >> SMC

Network Type >> Infrastructure

Tx Power >> Ad hoc

Preamble >> Infrastructure

Power Save Mode >> CAM PSM

RTS Threshold 0 2347

Fragment Threshold 256 2346

OK

Cancel

Statistics page:

Network Advanced **Statistics** WMM WPS Radio on/off About Help

Transmit Receive

| | | |
|---------------------------------------|---|------|
| Frames Received Successfully | = | 797 |
| Frames Received With CRC Error | = | 4407 |
| Frames Dropped Due To Out-of-Resource | = | 0 |
| Duplicate Frames Received | = | 0 |

Reset Counter

WMM page:

Network Advanced Statistics **WMM** WPS Radio on/off About Help

WMM Setup Status

WMM >> Enabled Power Save >> Enabled Direct Link >> Enabled

WMM Enable

WMM - Power Save Enable

AC_BK AC_BE AC_VI AC_VO

Direct Link Setup Enable

MAC Address >> [][][][][][] Timeout Value >> 60 sec

Apply

Tear Down

WPS page:

Network Advanced Statistics WMM **WPS** Radio on/off About Help

WPS AP List

| | | | |
|------|-------|-------------------|---|
| ID : | SMC | 00-13-F7-8E-63-93 | 6 |
| ID : | dlink | 00-1B-11-23-EA-5D | 6 |

WPS Profile List

Progress >> 0%

PIN WPS Associate IE

PBC WPS Probe IE

Auto

Rescan

Information

Pin Code

19044415 Renew

Config Mode

Enrollee

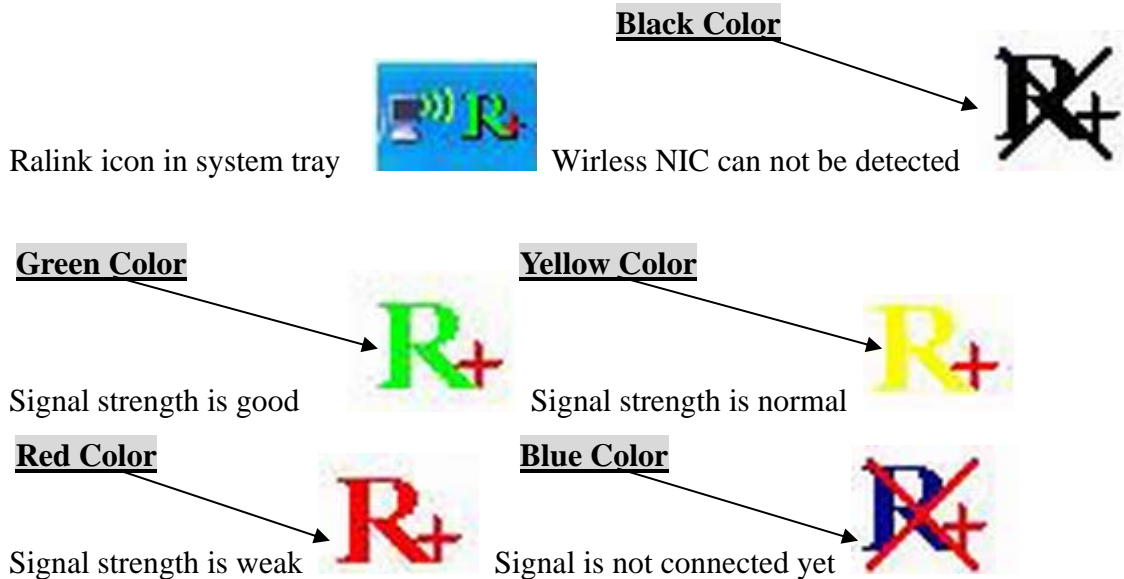
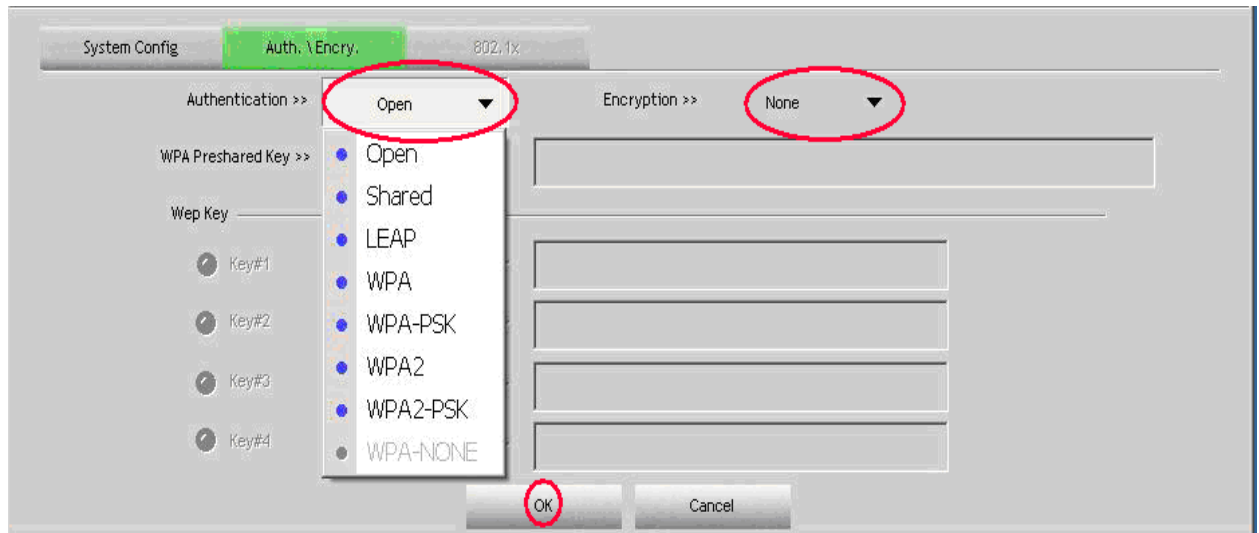
Enrollee

Registrar

Disconnect

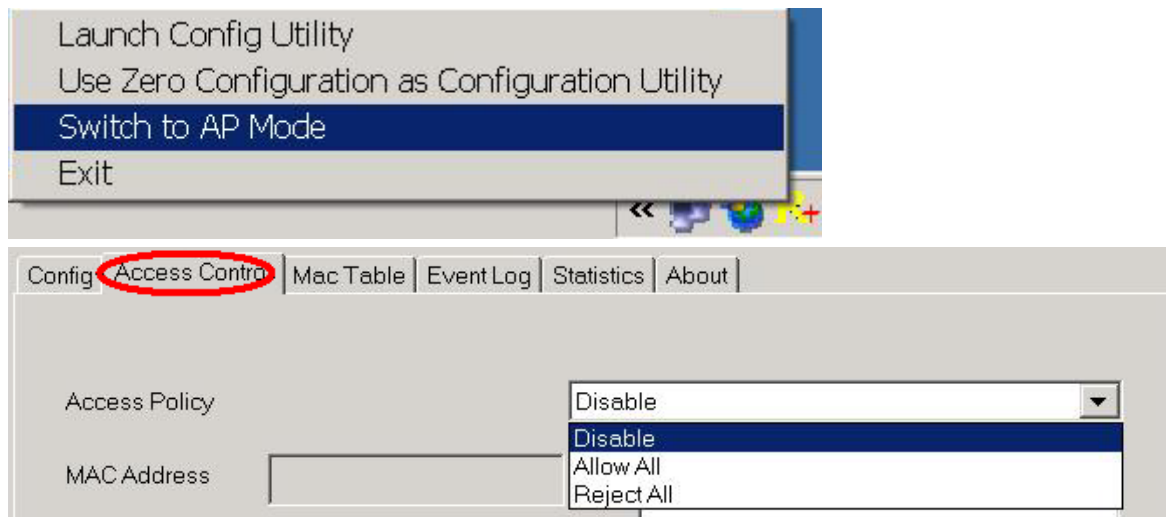
Delete

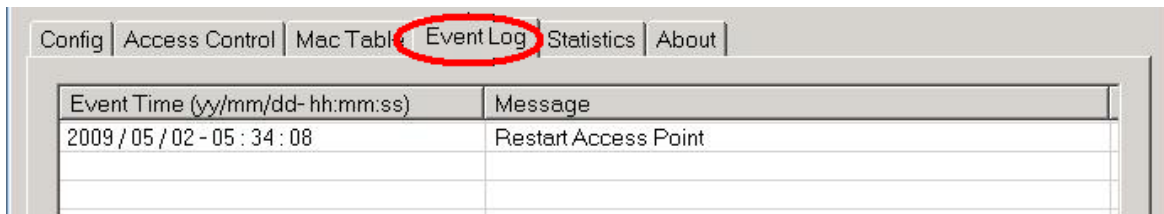
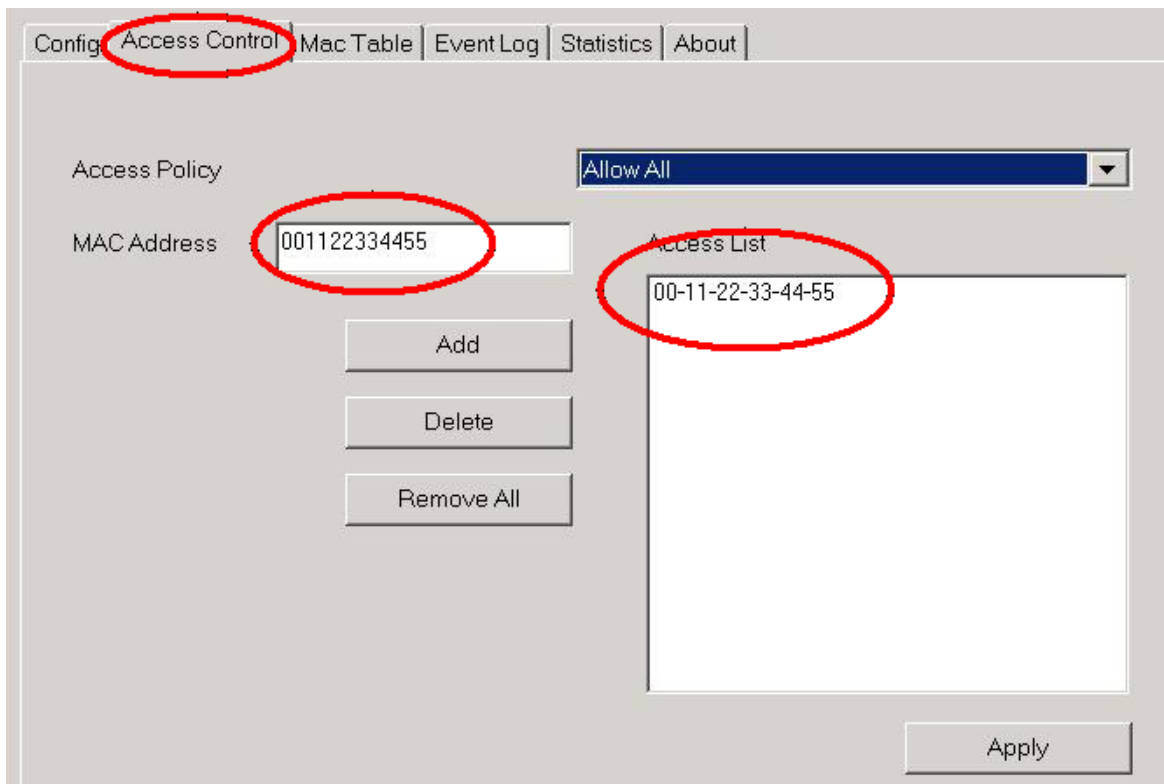
2. Status Section: Authentication Status



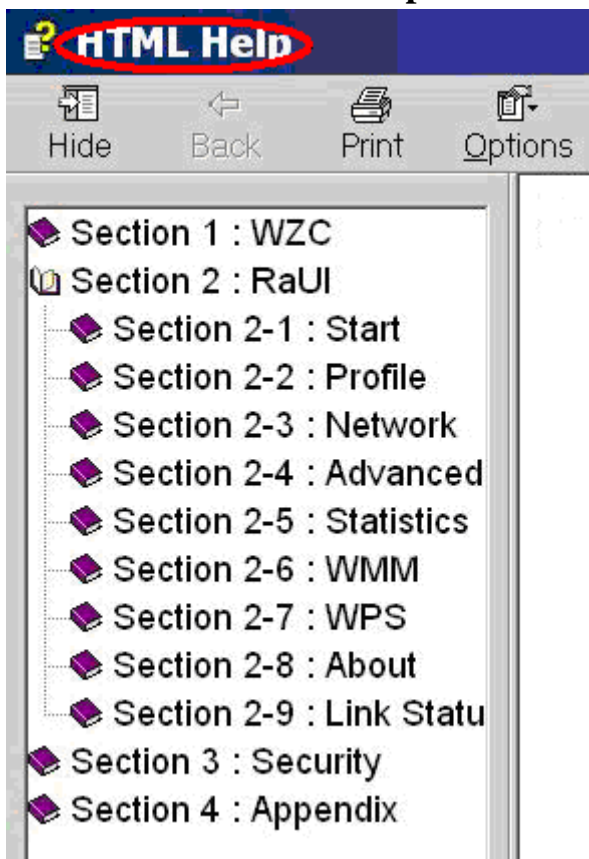
3: Software AP Mode

Click mouse's right button on Ralink icon in system tray.





4: For more information please refer to HTML Help in Help Page



Federal Communication Commission Interference Statement

This equipment has been tested and found to comply with the limits for a Class B digital device, pursuant to Part 15 of the FCC Rules. These limits are designed to provide reasonable protection against harmful interference in a residential installation. This equipment generates, uses and can radiate radio frequency energy and, if not installed and used in accordance with the instructions, may cause harmful interference to radio communications. However, there is no guarantee that interference will not occur in a particular installation. If this equipment does cause harmful interference to radio or television reception, which can be determined by turning the equipment off and on, the user is encouraged to try to correct the interference by one of the following measures:

- Reorient or relocate the receiving antenna.
- Increase the separation between the equipment and receiver.
- Connect the equipment into an outlet on a circuit different from that to which the receiver is connected.
- Consult the dealer or an experienced radio/TV technician for help.

This device complies with Part 15 of the FCC Rules. Operation is subject to the following two conditions: (1) This device may not cause harmful interference, and (2) this device must accept any interference received, including interference that may cause undesired operation.

FCC Caution: Any changes or modifications not expressly approved by the party responsible for compliance could void the user's authority to operate this equipment.

IEEE 802.11b or 802.11g operation of this product in the U.S.A. is firmware-limited to channels 1 through 11.

IMPORTANT NOTE:

FCC Radiation Exposure Statement:

This equipment complies with FCC radiation exposure limits set forth for an uncontrolled environment. This equipment should be installed and operated with minimum distance 20cm between the radiator & your body.

This transmitter must not be co-located or operating in conjunction with any other antenna or transmitter.