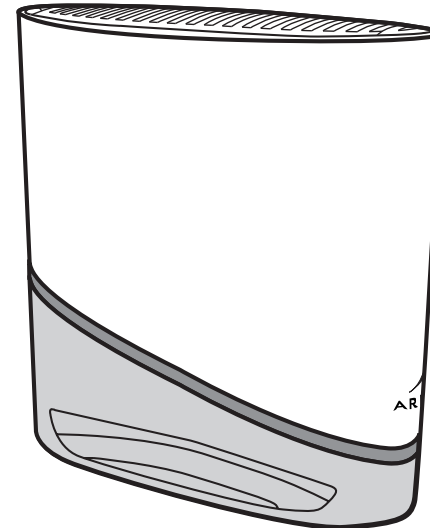


Quick Start Guide

x6042
Mesh Extender



IMPORTANT SAFETY INSTRUCTIONS

The model number, serial number, and electrical rating are on a label on the base of the device. Do not locate the device near water. Do not locate the device in direct sunlight or near a heat source. Do not use liquids, aerosols, or forced air to clean the device. It may be cleaned using a dry, lint-free cloth. Do not block the ventilation holes on this device. Do not stand it on soft furnishings or carpets. Do not use the device in an environment that exceeds 104°F (40°C). Use only the power supply and cord provided with the device. Do not use the power supply with any other devices.

Open source software and licenses

For instructions on how to obtain a copy of any source code being made publicly available by ARRIS related to software used in this ARRIS product you may send your request in writing to: ARRIS, Software Pedigree Operations, 2450 Walsh Avenue, Santa Clara, CA 95051, USA. The ARRIS website opensource.arris.com also contains information regarding use of open source. ARRIS has created opensource.arris.com to serve as a portal for interaction with the software community-at-large.

FCC Compliance

This device complies with part 15 of the FCC Rules. Operation is subject to the following two conditions: (1) This device may not cause harmful interference, and (2) this device must accept any interference received, including interference that may cause undesired operation.

• This equipment has been tested and found to comply with the limits for a Class B digital device, pursuant to part 15 of the FCC Rules. These limits are designed to provide reasonable protection against harmful interference in a residential installation. This equipment uses and can radiate radio frequency energy and, if not installed and used in accordance with the instructions, may cause harmful interference to radio communications. However, there is no guarantee that interference will not occur in a particular installation.

This equipment does cause harmful interference to radio aircraft systems. Operation of transmitters in the 5.925-7.125 GHz band is prohibited for control of or communications with unmanned aircraft systems.

FCC certification

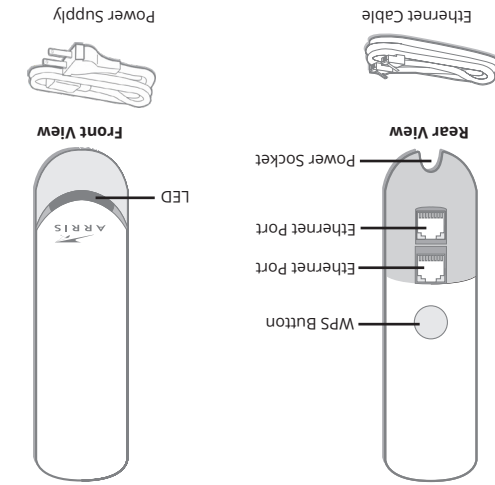
This product contains a radio transmitter and accordingly has been certified as compliant with 47 CFR Part 15 of the FCC Rules for intentional radiators. Products that contain a radio transmitter are labeled with FCC ID and the FCC logo.

FCC Caution: Any changes or modifications not expressly approved by the party responsible for compliance could void the user's authority to operate the equipment.

- Consult the dealer or an experienced radio/TV technician for help.
- From that to which the set-top is connected.
- Connect the equipment into an outlet on a circuit different from that to which the set-top is connected.
- Increase the separation between the equipment and set-top. Measure: reorient or relocate the receiving antenna.

If this equipment does cause harmful interference to radio or television reception, which can be determined by turning the equipment off and on, the user is encouraged to try to correct the interference by one or more of the following measures: reorient or relocate the receiving antenna.

What's in the box



Cet équipement doit être installé et utilisé à plus de 22 cm entre le radiateur et votre corps.

Utilisation doit être limitée à l'intérieur seulement.

Operation on oil platforms, automobiles, trains, maritime vessels and aircraft shall be prohibited except for on large aircraft flying above 3,048 m (10,000 ft).

Utilisation à bord de plateformes de forage pétrolier, d'automobiles, de trains, de navires maritimes et d'aéronefs doit être interdite, sauf à bord d'un gros aéronef volant à plus de 3 048 m (10 000 pi) d'altitude.

Devices shall not be used for control of or communications with unmanned aircraft systems.

Les dispositifs ne doivent pas être utilisés pour commander des systèmes d'aéronef sans pilote ni pour communiquer avec de tels systèmes.

Caring for the Environment by Recycling

When you see this symbol on an ARRIS product, do not dispose of the product with residential or commercial waste.

Please recycle product packaging and this document.

Recycling your ARRIS equipment

Some countries or regions have set up systems to collect and recycle electrical and electronic waste items.

Recycling information can be obtained from the WEEE recycling section at www.CommScope.com.

How to read your Mesh Extender LEDs

State	LED color	
Starting up	fast blinking green	
Power network	Up: not connected to network	
Wired	Fast network speed	solid green
	Limited network speed	solid yellow
	Slow network speed	solid red
WPS	WPS process ongoing	blinking yellow
	WPS pairing unsuccessful	fast blinking red, 10 seconds
	WPS pairing successful	fast blinking green, 10 seconds
	Extender at good position	solid green
Wireless	Extender far from router/gateway	solid yellow
	Extender too far from router/gateway	solid red

Canadian Compliance

CAN ICES-03(B)/NMB-3(B)

This device complies with ISED's license-exempt RSSs. Operation is subject to the following two conditions: (1) This device may not cause harmful interference, and (2) this device must accept any interference received, including interference that may cause undesired operation.

Le présent appareil est conforme aux CNR d'ISED applicables aux appareils radio exempts de licence. L'exploitation est autorisée aux deux conditions suivantes : (1) le dispositif ne doit pas produire de brouillage préjudiciable, et (2) ce dispositif doit accepter tout brouillage reçu, y compris un brouillage susceptible de provoquer un fonctionnement indésirable.

The device meets the exemption from the routine evaluation limits in section 2.5 of RSS 102 and compliance with RSS-102 RF exposure, users can obtain Canadian information on RF exposure and compliance.

Le dispositif rencontre l'exemption des limites courantes d'évaluation dans la section 2.5 de RSS 102 et la conformité à l'exposition de RSS-102 rf, utilisateurs peut obtenir l'information canadienne sur l'exposition et la conformité de rf.

This transmitter must not be co-located or operating in conjunction with any other antenna or transmitter.

Cet émetteur ne doit pas être Co-placé ou ne fonctionnant en même temps qu'aucune autre antenne ou émetteur.

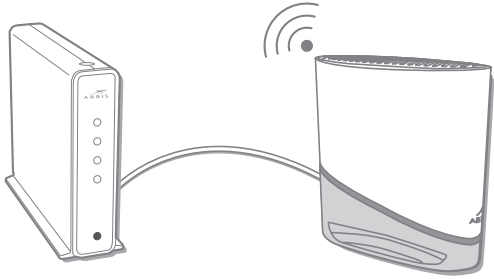
This equipment complies with ISED radiation exposure limits set forth for an uncontrolled environment. This equipment should be installed and operated with greater than 22 cm between the radiator & your body.

Cet équipement est conforme aux limites d'exposition aux rayonnements ISED établies pour un environnement non contrôlé.

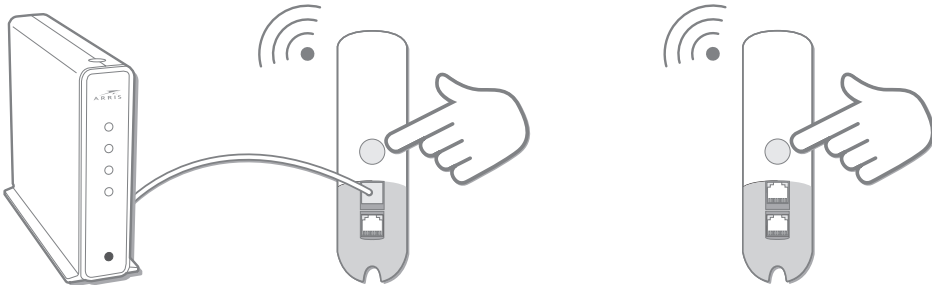
Connect your X6042 Wired Connection

Has your service provider informed you that your ARRIS gateway is HomeAssure Enabled? **NO**

- 1) Connect your first X6042 Mesh Point to your current gateway using an Ethernet cable. Then connect the Mesh Point to power and switch to ON. The LED will blink fast, then blink slow, then turn to solid green. This will take a couple of minutes. Now, you are ready to add additional Mesh Points to the network.



- 2) Locate your second Mesh Point approximately 5-15m from your gateway; if you have line-of-sight they can be further apart, but move closer if there are thick walls between.
- 3) Pair the units: Push the WPS button on the first Mesh Point, then push the WPS button on the second Mesh Point. Note: When adding additional Mesh Points, always push the button on the first

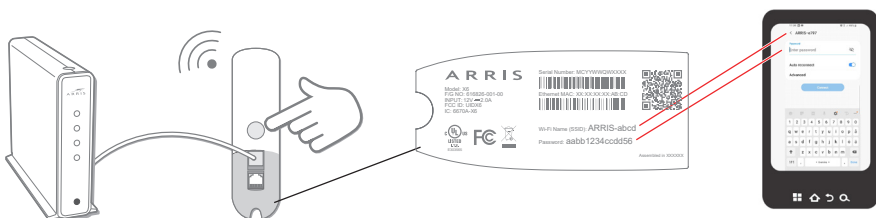


Mesh Point and then push the WPS button on the Mesh Point you are adding.

- 4) The LED on the second Mesh Point flashes green quickly when the two units pair successfully.
- 5) The second Mesh Point will be automatically configured with the same Wi-Fi settings as the first Mesh Point; this will take a few moments.
- 6) When configuration is complete, the LED on the second Mesh Point will change color to indicate the quality of the link between the first and the second Mesh Points. See [How to read your Mesh Extender LEDs](#) in this guide to understand the state the LED color indicates.

Connecting clients (optional) You can connect to your network in two ways:

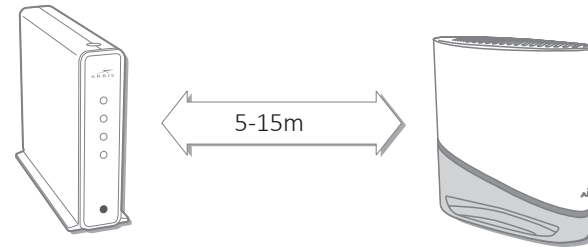
- 1) Use the Wi-Fi credentials used for your HomeAssure enabled-gateway or the Wi-Fi credentials printed on the first Mesh Point connected to your gateway.



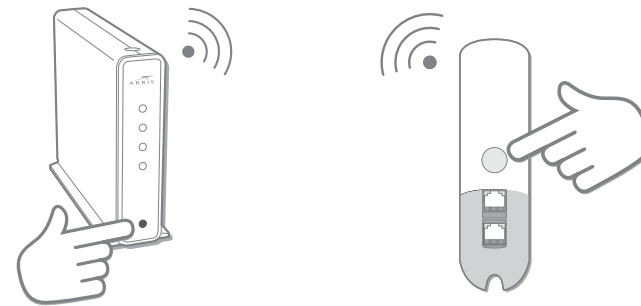
Connect your X6042 with HomeAssure™ enabled

Has your service provider informed you that your ARRIS gateway is HomeAssure Enabled? **YES**

- 1) Locate your first X6042 Mesh Point approximately 5-15m from your gateway; if you have line-of-sight they can be further apart, but move closer if there are thick walls between. Connect the Mesh Point to power and switch to ON.



- 2) Pair the gateway and the Mesh Point: Push the WPS button on the gateway, then push the WPS button on the Mesh Point. The LED on the Mesh Point flashes green quickly when it has paired successfully with the gateway.



- 3) Next, the LED will change color to indicate the quality of the link between the gateway and the Mesh Point. See [How to read your Wireless Extender LEDs](#) in this guide to understand the state the LED color indicates.
- 4) To add additional Mesh Points, repeat steps 1-3. Additional Mesh Points are configured with the same Wi-Fi settings as the first Mesh Point.

- 2) Use the WPS button on the front of the Mesh Point and the WPS Push-button configuration (PBC) functionality on your device.

