

99.10 mm



Wireless Charging Mat

Model: BWB18WI706

PRODUCT GUIDE

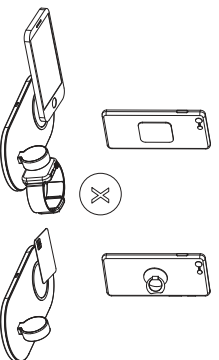
Ver.00 Rev.06/19/18

1. Insert the USB end of cable into power adaptor, and connect Micro-USB end of the cable with the wireless charger, the green LED indicator lights up after it is connected well.



2. Put your devices on the wireless charging mat. Ensure your phone center aligns with the center of rubber circle of wireless charger, or indicates your watch to the pad by magnetic attraction.
Note: Using an ultra-thin protective phone case (3mm) or a case with a magnet/iron is not recommended as it may affect the wireless charging function.

Caution



Ver.00 Rev.06/19/18

What's Included?

- Wireless Charging Mat
- A 3in/95mm Micro-USB cable
- A 15W AC Adapter

Specifications

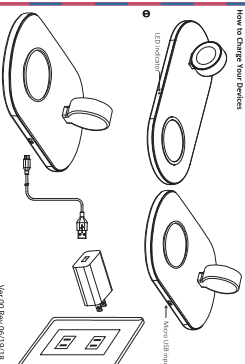
Model	BWB18WI706
Input	5V/2A, 9V/2A
Output	3V/500mA

Wireless Charging Pad LED Indicator/Status

LED Indicator	Status
Green	Connected to power, standby for charging
Yellow	OK, device is fully charged
Red	Foreign object detected
None	Foreign object detected (Remove it before charging)

Note: This device is not for mobile phone charging.

How to Charge Your Devices



Ver.00 Rev.06/19/18

- Avoid dropping.
- Do not disassemble.
- Keep the wireless charging mat away from any liquids or moisture.
- The maximum ambient temperature during use of this product must not exceed 48°C. Do not place device in fire or other excessively hot environments.
- Do not use the wireless charging mat with any other wireless charging devices.
- Do not use if mobile devices are placed on the wireless charging mat.

Fast Wireless Charging for mobile phone

- This new charger supports 5W and 15W modes on Android phones.
- The wireless charging mat supports up to 15W of power for most Samsung flagship phones.
- The wireless charging mat supports up to 7.5W to your iPhone.
- Leverage quick-charging speeds with up to 15W of power for newer Samsung flagship phones.

Warning

Use or modification not expressly approved by the party responsible for compliance could void the user's warranty to operate this equipment.

FCC Statements

This device complies with Part 15 of the FCC Rules.

Operation is subject to the following two conditions:
(1) This device may not cause harmful interference, and
(2) This device must accept any interference received including interference that may cause undesired operation.

Note 1: The equipment has been tested and found to comply with the limits for a Class B digital device, pursuant to part 15 of the FCC Rules. These limits are designed to provide reasonable protection against harmful interference in a residential installation. This equipment generates uses and can radiate radio frequency energy and, if not installed and used in accordance with the instructions, may cause harmful interference to radio communications. However, there is no guarantee that interference will not occur in a particular installation. If interference is experienced, the user is encouraged to take the following measures to correct the interference by turning the equipment off and on, the user is encouraged to try to correct the interference by one or more of the following measures:

- Reorient or relocate the receiving antenna.
 - Increase the separation between the equipment and receiver.
 - Connect the equipment to an outlet on a circuit different than that to which the receiver is connected.
 - Consult the dealer or an experienced radio/TV technician for help.
- Note 2: Changes or modifications not expressly approved by the party responsible for compliance could void the user's warranty to operate the equipment. Changes or modifications not expressly approved by the party responsible for compliance could void the user's warranty to operate the equipment. The distance between user and products should be over 20 feet (6.1m).

Ver.00 Rev.06/19/18

139.61 mm