



5W Wireless Charging Pad

Model: ONB18W1701

PRODUCT GUIDE

Ver. A Rev. 06/11/2018

What is Included?

- Wireless Charging Pad
- Micro-USB to -USB -A Sync & Charge Cable

Specifications

- Wireless Charging Pad

Model	ONB18W1701
Input	5V/2A
Output	5W
Dimensions	3.54x3.14x0.5x7.6mm
Weight	12.5g

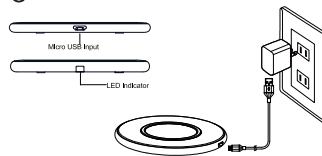
- Micro-USB to -USB -A Sync & Charge Cable- 3R/1914mm

Wireless Charging Pad LED Indicator/Status

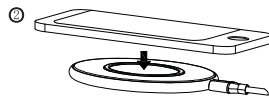
LED Indicator	Status
Green	Completed charge Successfully charged device
Blue	Charging mobile device
Flashing blue	Incorrectly placed device

How to Charge Your Devices

①



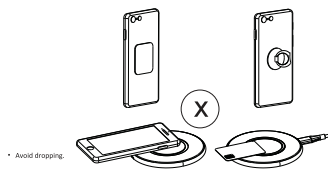
1. Insert the USB end of cable into power adaptor, and connect the Micro-USB end of the cable with the wireless charger; the green LED indicator lights up after it is connected well.



2. Make sure that the phone is well located at the charging area of wireless charger

Note: Using an ultra-thick protective phone case(25mm) or a case with a magnet/iron is not recommended as it may affect the wireless charging function.

Caution



- Avoid dropping.
 - Do not disassemble.
 - No metal object between devices and Wireless Charging Pad
 - Keep wireless charging pad away from any liquids or moisture.
 - The maximum ambient temperature during use of this product must not exceed 45°C.
- Do not place device in fire or other excessively hot environments.
- Only use dry cloth or brush to clean this product.
 - Do not use if visible defects are observed on the wireless charging pad.

FCC Statements

This device complies with Part 15 of the FCC Rules

Operation is subject to the following two conditions

(1) this device may not cause harmful interference, and

(2) this device must accept any interference received including interference that may cause undesired operation

NOTE: This equipment has been tested and found to comply with the limits for a Class B digital device, pursuant to Part 15 of the FCC Rules. These limits are designed to provide reasonable protection against harmful interference in a residential installation. This equipment generates uses and can radiate radio frequency energy and, if not installed and used in accordance with the instructions, may cause harmful interference to radio communications. However, there is no guarantee that interference will not occur in a particular installation. If this equipment does cause harmful interference to radio or television

reception, which can be determined by turning the equipment off and on, the user is encouraged to try to correct the interference by one or more of the following measures:

- Reorient or relocate the receiving antenna
- Increase the separation between the equipment and receiver
- Connect the equipment into an outlet on a circuit different from that to which the receiver is connected

Consult the dealer or an experienced radio/TV technician for help

Note: The manufacturer is not responsible for any radio or TV interference caused by unauthorized modifications to this equipment. Such modifications could void the user's authority to operate this equipment. Changes or modifications not expressly approved by the party responsible for compliance could void the user's authority to operate the equipment. The distance between user and products should be no less than 20cm.