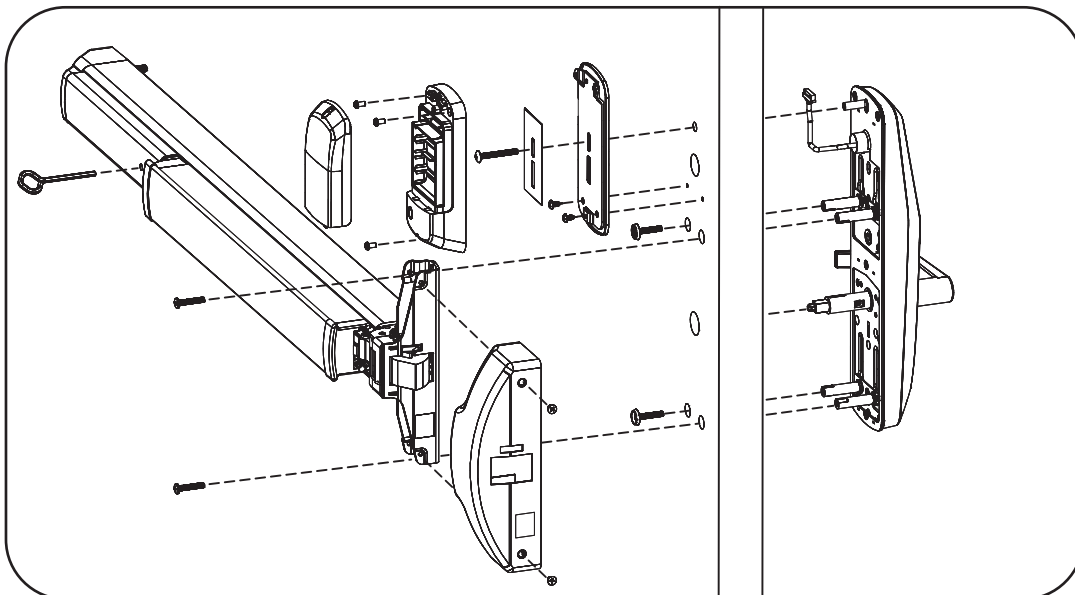
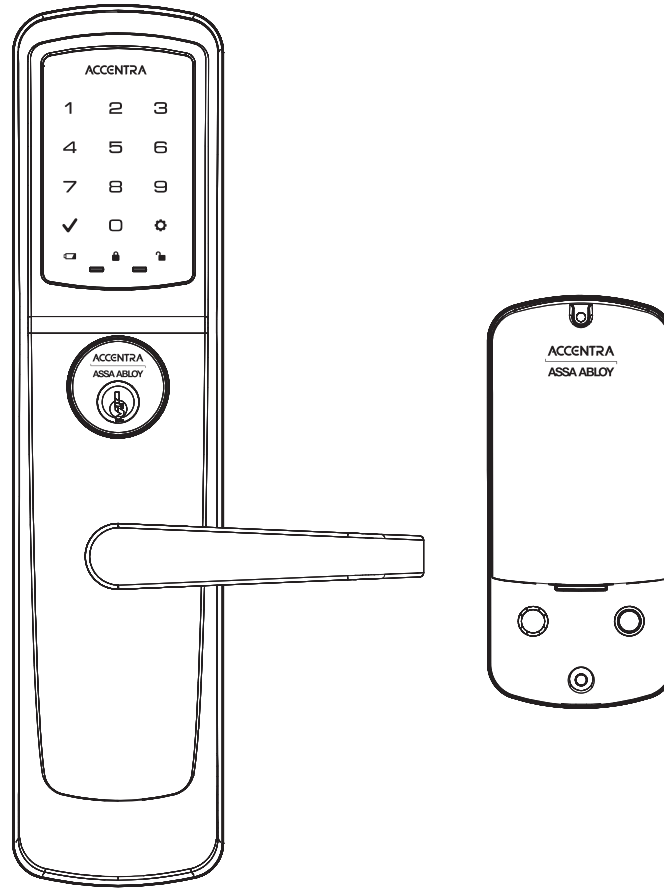


nexTouch® Keypad Access

Exit Trim Lock Touchscreen and Push Button

Installation and Programming Instructions

ACCENTRA
ASSA ABLOY



Retrofitting or modifying this product may impact fire rating, safety features and warranty.
Consult with code specifications to ensure compliance with all codes and ratings.

80-8470-0900-000 04/2024

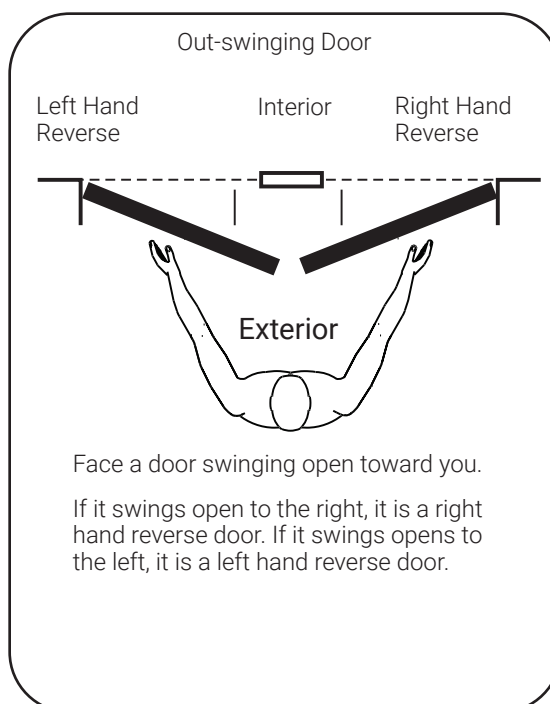
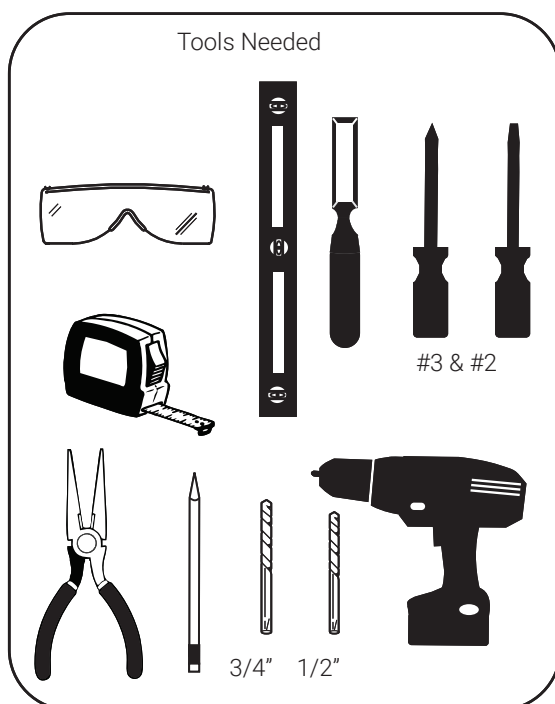
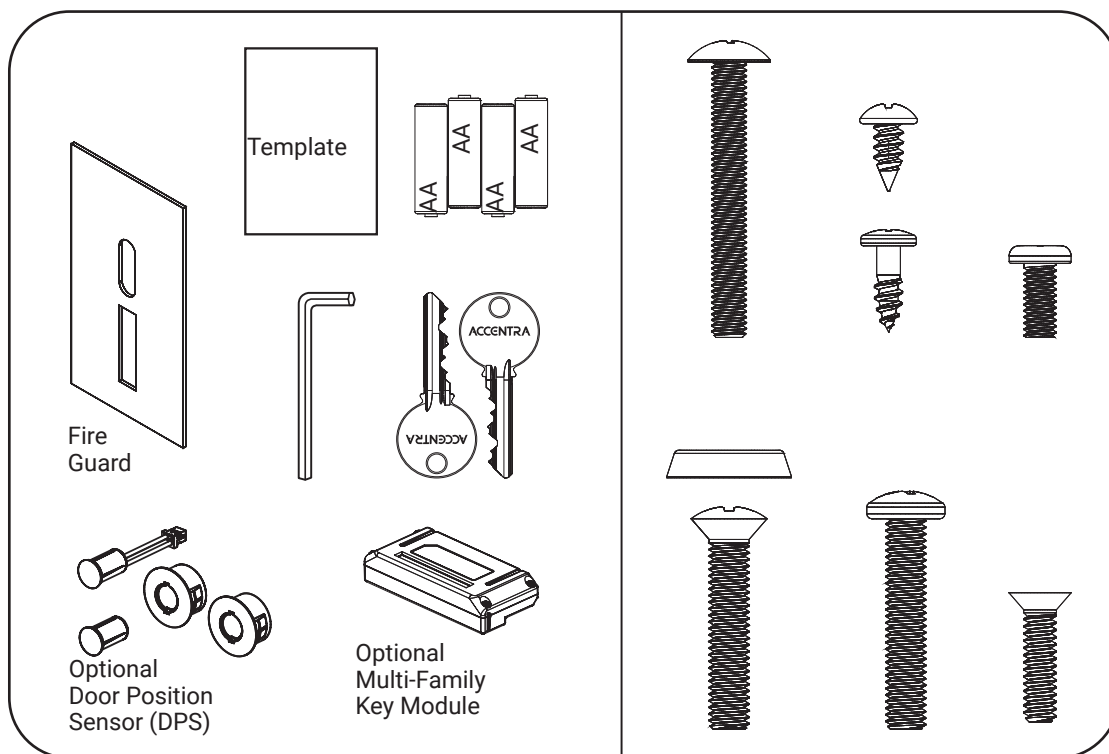
1-800-810-9473 • www.accentra-assaabloy.com

Copyright © 2017-2021-2024, ASSA ABLOY ACCENTRA™ Access and Egress Hardware Group, Inc. All rights reserved. Reproduction in whole or in part without the express written permission of ASSA ABLOY Access and Egress Hardware Group, Inc. is prohibited. Patent pending and/or patent www.assaabloydss.com/patents.

Experience a safer
and more open world



Before You Begin

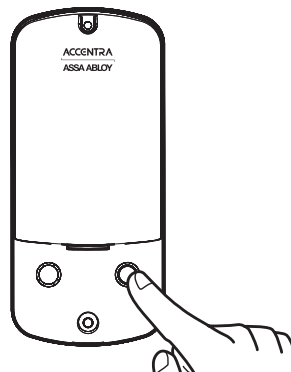
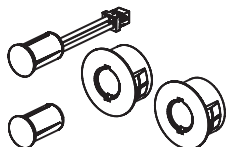




Door Position Switch Option

Privacy DPS Switch

With Door Position Switch installed and door closed, all keypad functions can be disabled by Privacy Button.



1 Prepare Door

DPS Option for Privacy Function

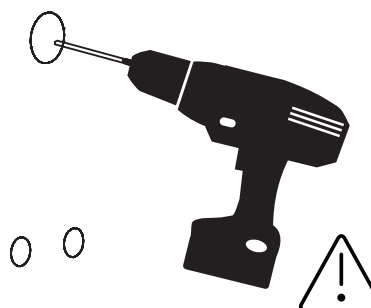
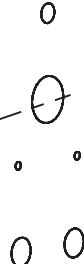
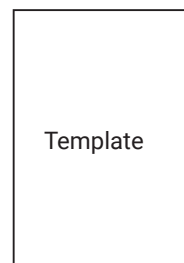
Wood Door:
3/8" Dia. Thru to
Hole in Door Face

*Metal Door:
3/4" Dia. Thru to
Hole in Door Face



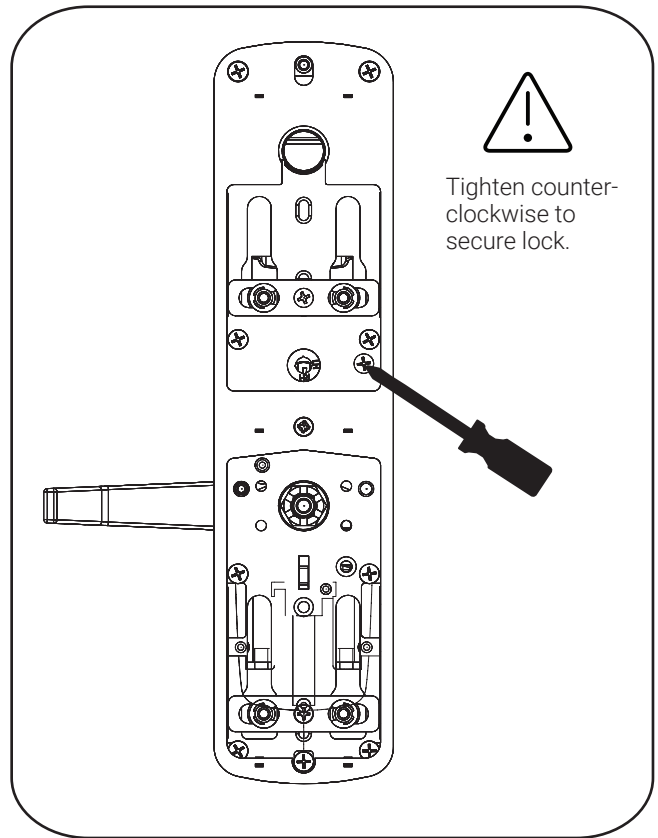
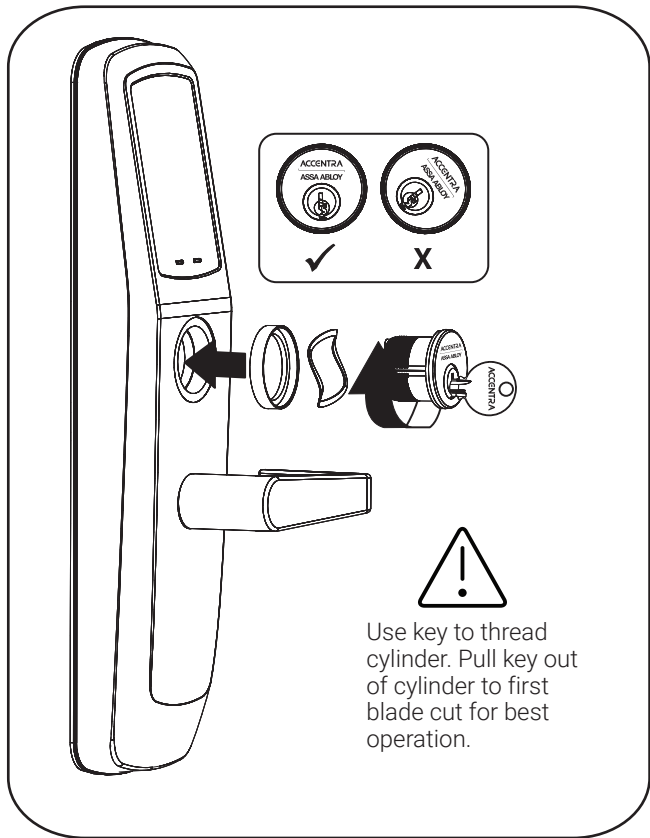
***Metal Door Installations**

Supplied plastic collar **MUST**
be installed for DPS to
function properly.



Drill holes 1/2 way thru
door then complete
from other side to
prevent splitting.

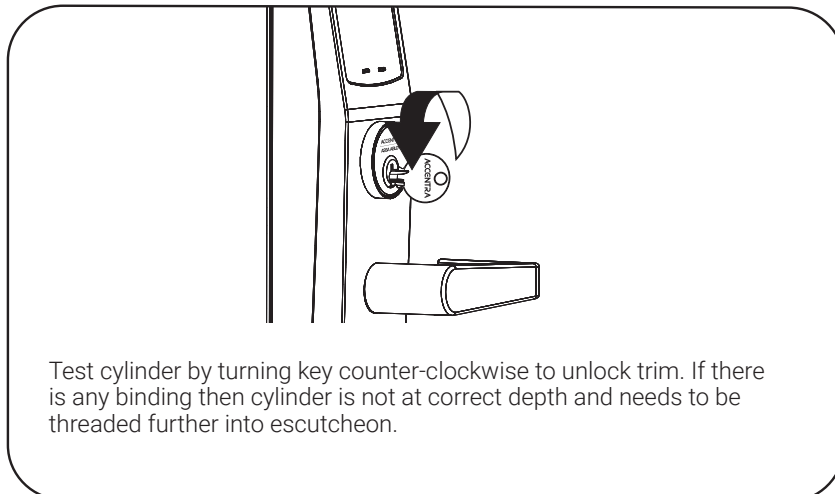
2 Install Cylinder



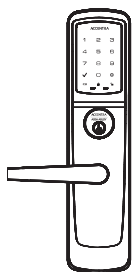
If using cylinder other than 1-1/8", a new collar must be used that is sized appropriately for cylinder length.



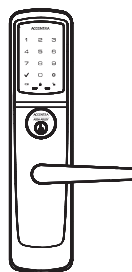
Test Cylinder



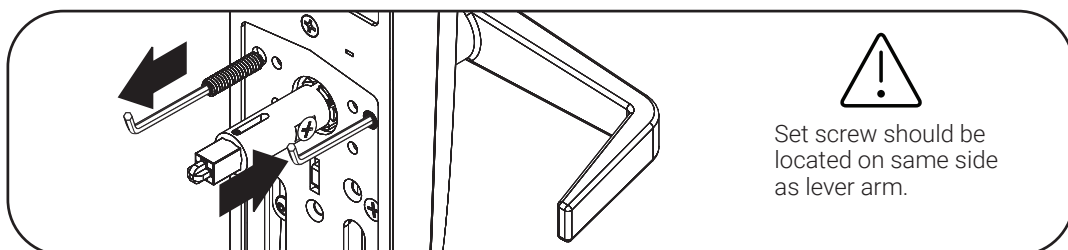
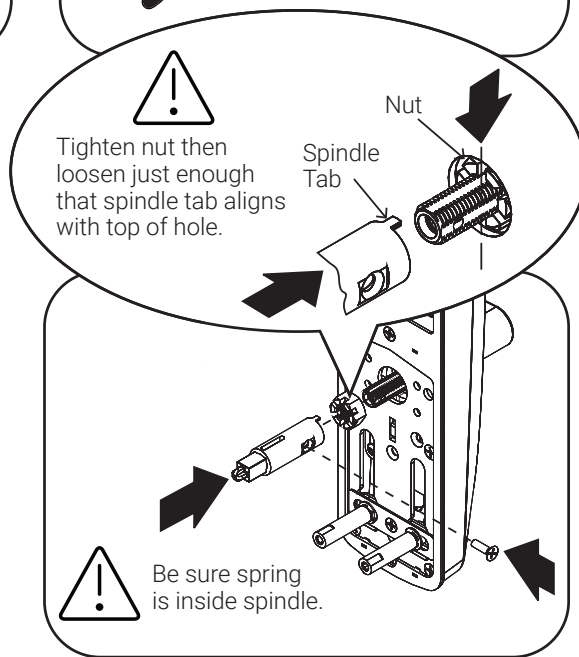
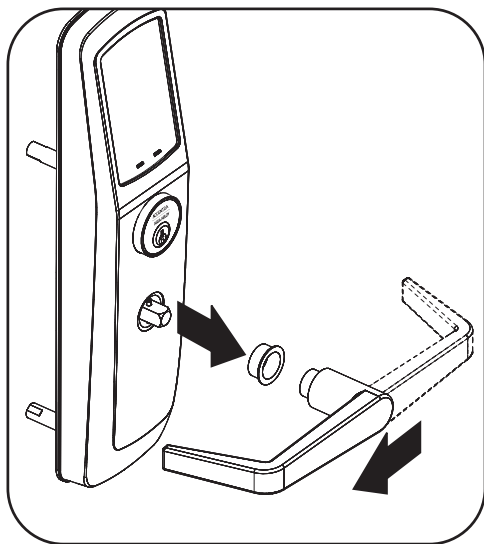
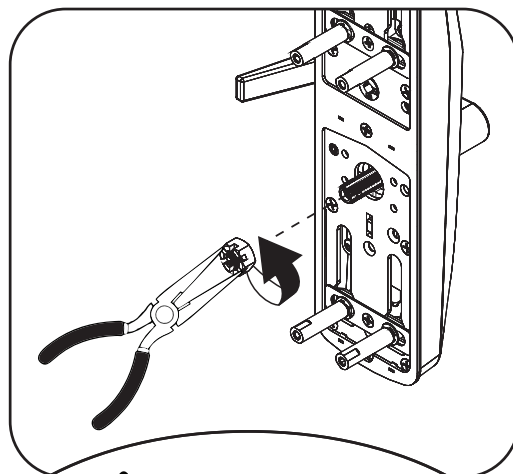
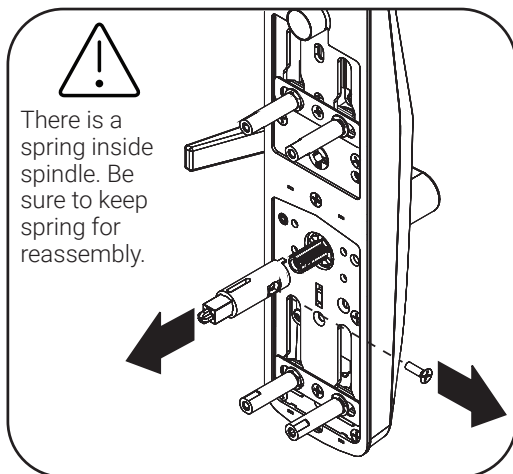
3 Change Hand of Trim (if necessary)



Left Hand Reverse



Right Hand Reverse

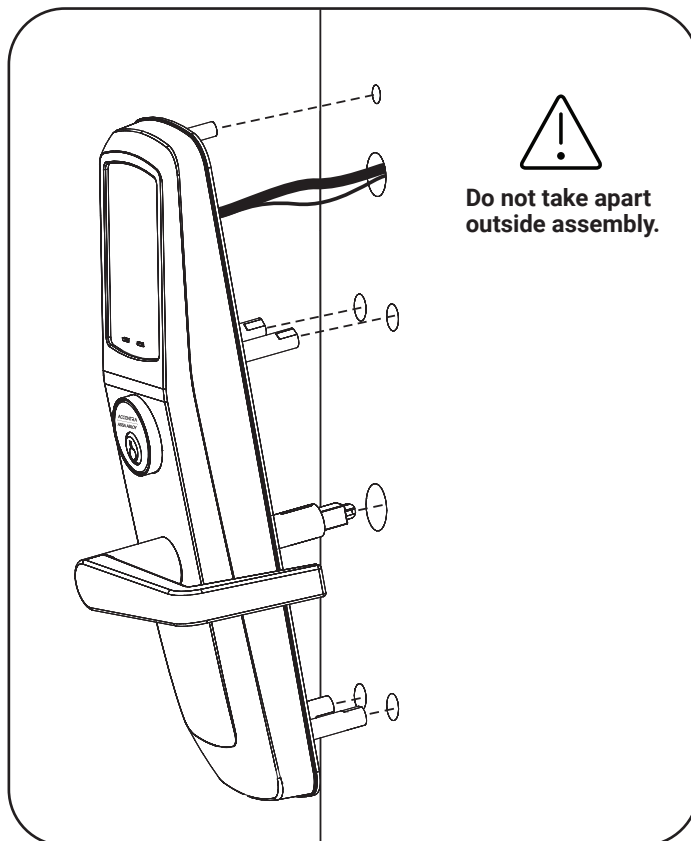


4 Install Outside Trim Assembly

#10-32 x 1" OHPMS



x2



2 hinge side screws hold outside trim assembly until exit device is installed.

All 4 screws **MUST** be used for proper installation.



Do not tighten screws until exit device installation -Step 5.

