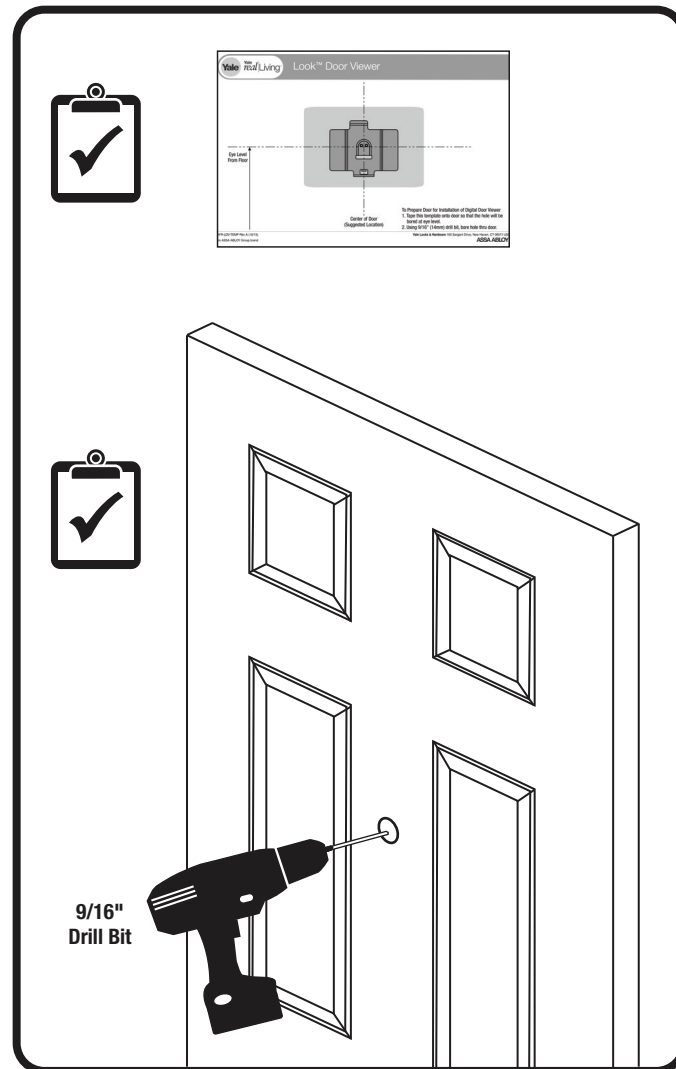
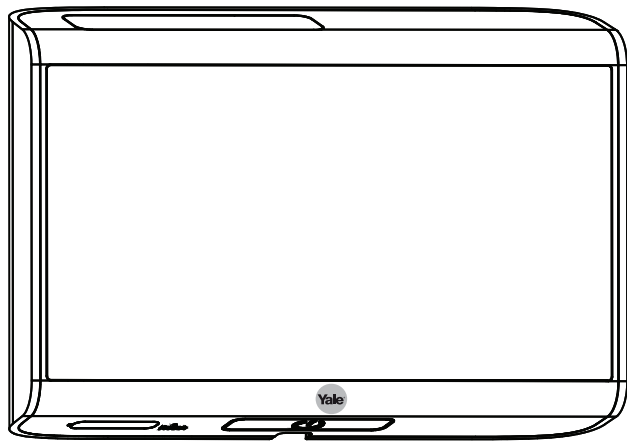
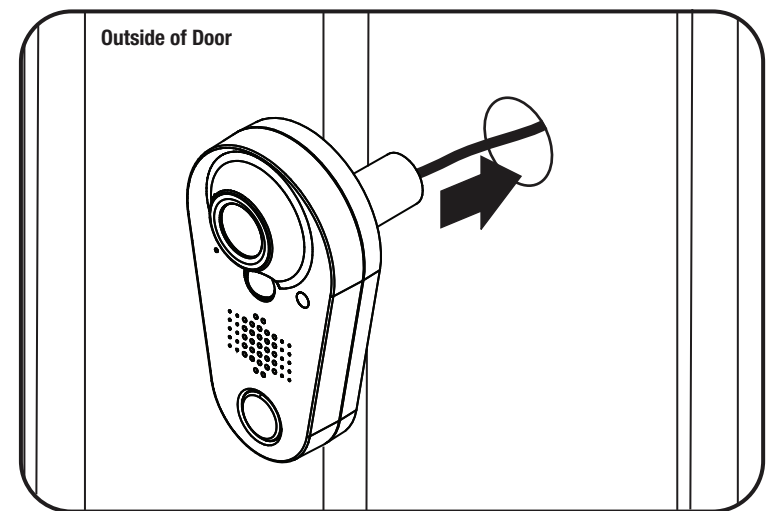




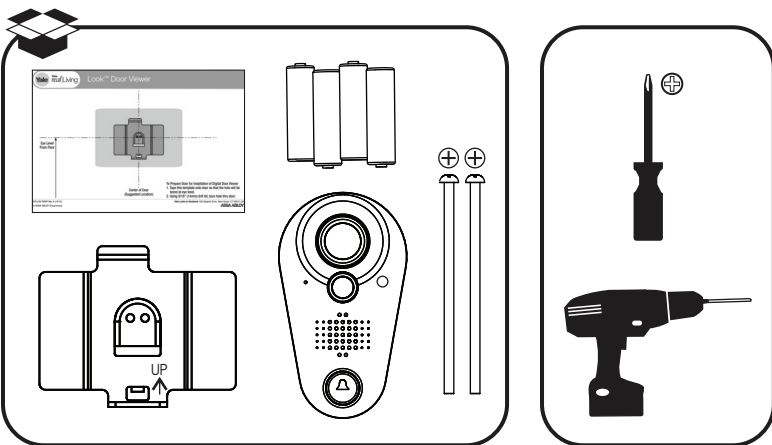
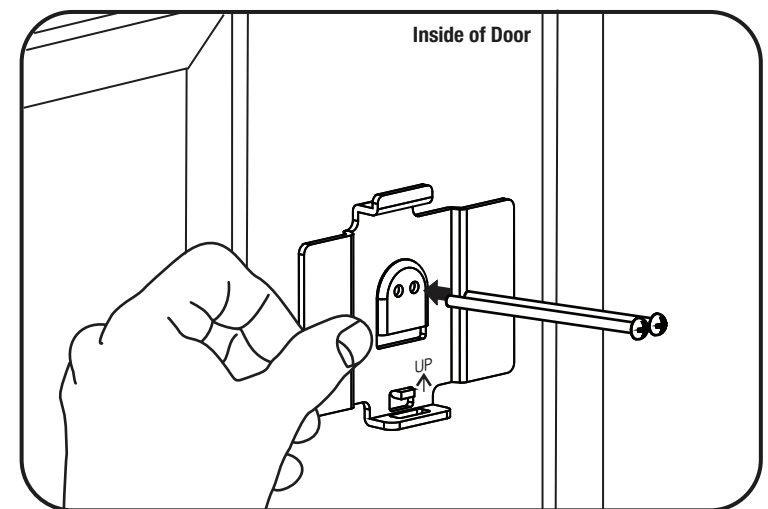
Preparing Door



1 Installing Camera



2 Installing Holding Plate



Yale Locks & Hardware

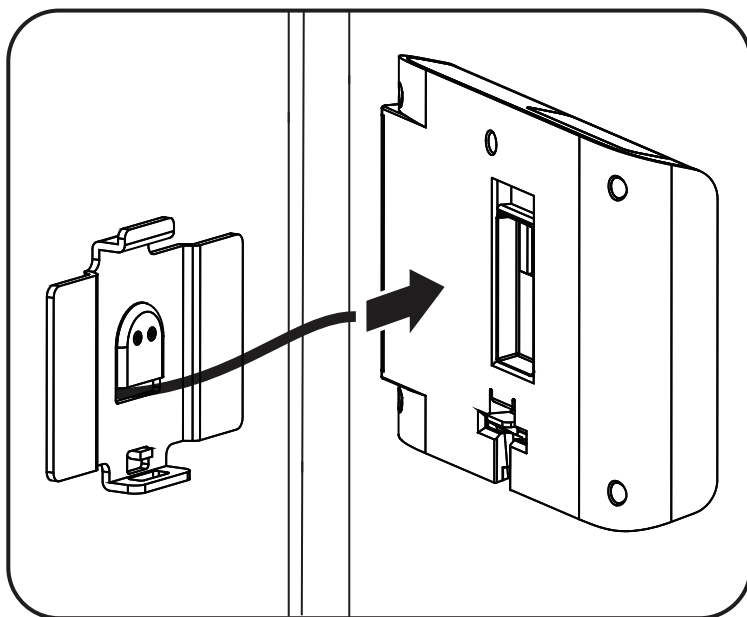
An ASSA ABLOY Group brand

AYRLDVINSTFUL_RevA

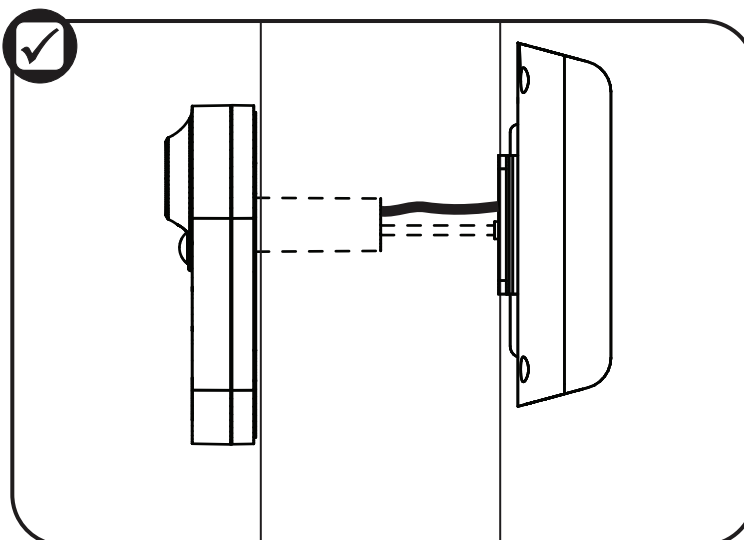
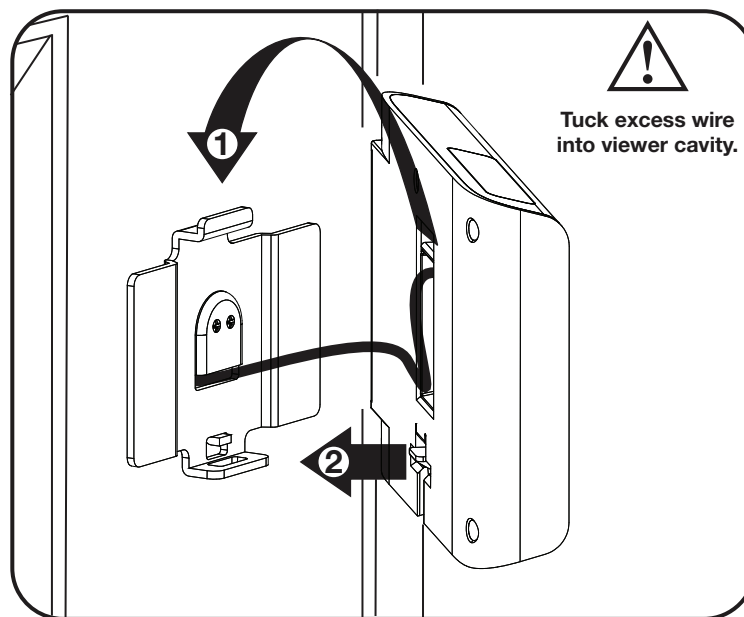
ASSA ABLOY



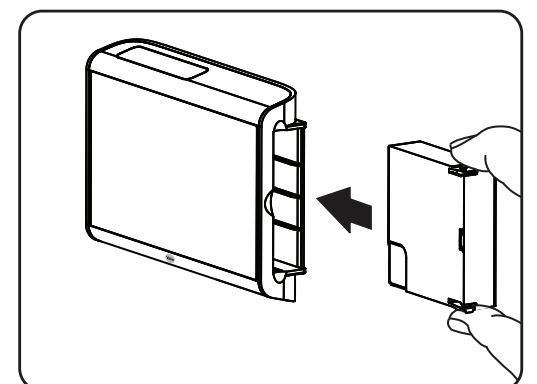
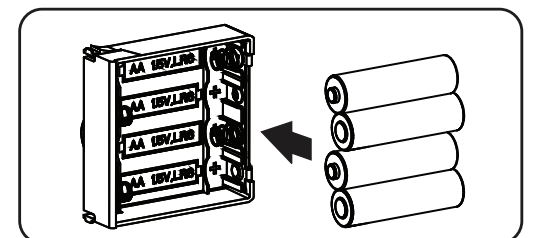
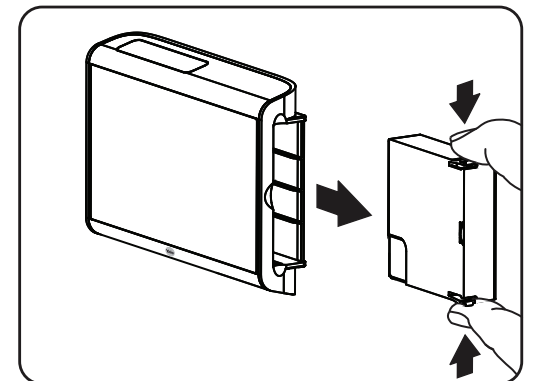
3 Connecting Camera to Viewer



4 Mounting Viewer



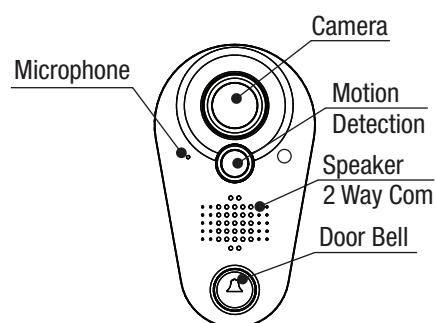
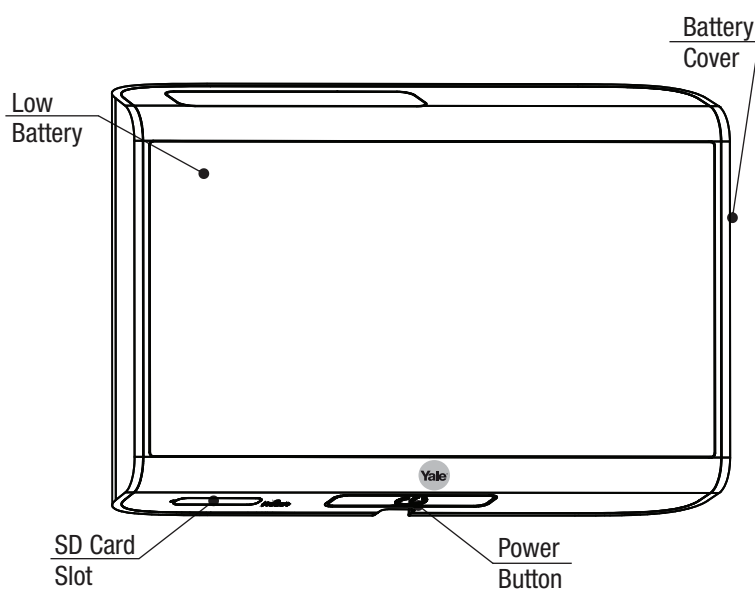
5 Installing the Batteries



DID STICKER

Congratulations, you've installed the Yale Real Living™ Look™ Door Viewer! Turn sheet over for Programming Instructions to customize your product.

Digital Door Viewer Programming



Definitions:

*Please note all adjustments to the Digital Door viewer are made via the mobile application.

Low battery – The low battery light will flash when your Digital Door Viewer batteries are low. You will also receive a notification via your mobile app.

Motion Detection: Turn motion detection on to activate the camera as a visitor approaches the door. The motion detection distance change also be adjusted if you live in a high traffic area.

Night Vision: Turn night vision on to capture images of visitors at night.

Door Bell: When the door bell is active and image/video will be captured once it is pressed.

SD Card: Use the included SD card to store images and videos locally. Each image and/or video will be time and data stamped.

Photo: If the photo setting is chosen as the standard setting, an image will be taken each time the camera is activated. The images will be time and date stamped.

Video: If the video setting is chosen as the standard setting, a video will be taken each time the camera is activated. The video length can be adjusted from 1 seconds – 30 seconds.

Delay to Capture: Delay the image capture between 1 seconds – 10 seconds. This setting would be used to ensure you capture the best image of the visitor.

Two Way Communication: Easily communicate to visitors of your home while you are not home.

Users: Invite users to have access to the mobile application to receive notifications.

Mobile Application

Download the mobile application from the Android Play store or Apple App store.



Setting Up Your Device

After downloading the application follow the on-screen instructions. Have a small tool available to assist in pressing the Reset button.

Setting Up Z-Wave

Enrolling/Unenrolling the Network Module:

It is recommended that the Look™ Door Viewer is programmed through the centralized user interface (PC or hand-held device) to ensure communication between the lock and the controller unit. The network controller first needs to be in enrollment or exclusion mode for the lock to be enrolled or unenrolled from network.

FCC Compliance Statement: This device complies with Part 15 of the FCC rules. Operation is subjected to the following two conditions: (1) this device may not cause harmful interference, and (2) this device must accept any interference received, including interference that may cause undesired operation.

IC Compliance Statement: This device complies with Industry Canada's licence-exempt RSSs. Operation is subject to the following two conditions: (1) this device may not cause interference, and (2) this device must accept any interference of the device.

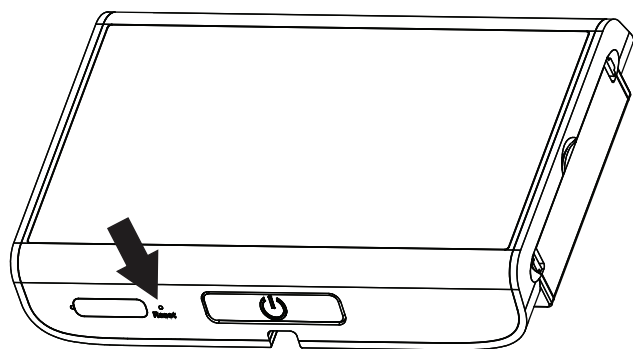
Cet appareil est conforme aux CNR exemptes de licence d'Industrie Canada . Son fonctionnement est soumis aux deux conditions suivantes :
(1) Ce dispositif ne peut causer d'interférences ; et
(2) Ce dispositif doit accepter toute interférence , y compris les interférences qui peuvent causer un mauvais fonctionnement de l'appareil.

Changes or modifications not expressly approved by the party responsible for compliance could void your authority to operate the equipment.

The distance between user and products should be no less than 20cm

La distance entre l'utilisateur et de produits ne devrait pas être inférieure à 20cm

Resetting Digital Door Viewer to Factory Default



Using a small tool, press the reset button for 5 seconds to reset the door viewer to factory defaults.

After resetting, the door viewer will need to be reconfigured via the application.

Troubleshooting

Screen doesn't turn on	Check cable
Unit doesn't power up	Check battery polarity
Not receiving notification	Check wifi signal strength and security

Attention:

1. Please read this user manual carefully before using our product.
2. Never attempt to repair or modify this product or its accessories by yourself, to avoid injury and invalidating guarantee!
3. Any accidental factor such as being struck by lightning or any incorrect operation could cause a memory loss on the SD card. Keeping copies of the videos is strongly recommended in case of memory loss. We are not responsible for any loss of data.
4. DO NOT use any chemicals to clean this product, such as alcohol or benzene thinner.
5. Please change the batteries soon after the low-battery indicator shows, in order to avoid any damage to this product which could be caused by battery weeping.

Factory Settings:

LCD	Off
Motion Detection	Off
Night Vision	Off
Door Bell	On
Photo Capture	

Yale Locks & Hardware

Product Support Tel 800.810.WIRE (9473) • www.yalelocks.com

Yale Locks & Hardware is a division of Yale Security Inc., an ASSA ABLOY Group company.

Yale® is a registered trademark of Yale Security Inc., an ASSA ABLOY Group company. Yale Real Living™ is a trademark of Yale Security Inc., an ASSA ABLOY Group company. Copyright © 2015, Yale Security Inc., an ASSA ABLOY Group company. All rights reserved. Reproduction in whole or in part without the express written permission of Yale Security Inc. is prohibited.

YALE, with its unique global reach and range of products, is the world's favorite lock — the preferred solution for securing your home, family and personal belongings.

ASSA ABLOY is the global leader in door opening solutions, dedicated to satisfying end-user needs for security, safety and convenience.