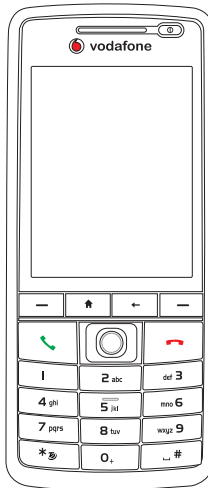


VDA IV

SMARTPHONE

USER MANUAL

VDA IV Smartphone



User Manual

E2696

First edition V1.07b

August 2006

Copyright © 2006 XXXXX. All Rights Reserved.

No part of this manual, including the products and software described in it, may be reproduced, transmitted, transcribed, stored in a retrieval system, or translated into any language in any form or by any means, except documentation kept by the purchaser for backup purposes, without the express written permission of XXXXX.^(XXX)

Product warranty or service will not be extended if: (1) the product is repaired, modified or altered, unless such repair, modification or alteration is authorized in writing by ; or (2) the serial number of the product is defaced or missing.

PROVIDES THIS MANUAL “AS IS” WITHOUT WARRANTY OF ANY KIND, EITHER EXPRESS OR IMPLIED, INCLUDING BUT NOT LIMITED TO THE IMPLIED WARRANTIES OR CONDITIONS OF MERCHANTABILITY OR FITNESS FOR A PARTICULAR PURPOSE. IN NO EVENT SHALL , ITS DIRECTORS, OFFICERS, EMPLOYEES OR AGENTS BE LIABLE FOR ANY INDIRECT, SPECIAL, INCIDENTAL, OR CONSEQUENTIAL DAMAGES (INCLUDING DAMAGES FOR LOSS OF PROFITS, LOSS OF BUSINESS, LOSS OF USE OR DATA, INTERRUPTION OF BUSINESS AND THE LIKE), EVEN IF HAS BEEN ADVISED OF THE POSSIBILITY OF SUCH DAMAGES ARISING FROM ANY DEFECT OR ERROR IN THIS MANUAL OR PRODUCT.

SPECIFICATIONS AND INFORMATION CONTAINED IN THIS MANUAL ARE FURNISHED FOR INFORMATIONAL USE ONLY, AND ARE SUBJECT TO CHANGE AT ANY TIME WITHOUT NOTICE, AND SHOULD NOT BE CONSTRUED AS A COMMITMENT BY . ASSUMES NO RESPONSIBILITY OR LIABILITY FOR ANY ERRORS OR INACCURACIES THAT MAY APPEAR IN THIS MANUAL, INCLUDING THE PRODUCTS AND SOFTWARE DESCRIBED IN IT.

Microsoft, Activesync, Outlook, Pocket Outlook, Windows, and the Windows logo are either registered trademarks or trademarks of Microsoft Corporation in the United States and/or in other countries. Microsoft products are licensed to OEMs by Microsoft Licensing, Inc., a wholly owned subsidiary of Microsoft Corporation.

Table of Contents

Chapter 1	Getting Started	1
1-1	Introducing the VDA IV Smartphone	1
1-2	Getting to know your Smartphone.....	2
1-3	Installing the SIM card and battery.....	5
1-4	Installing and removing a micro SD card.....	6
1-5	Charging your Smartphone.....	7
1-6	Turning your Smartphone ON/OFF	8
Chapter 2	Learning to Use Your Smartphone	9
2-1	Navigating	9
2-2	Home screen	11
2-3	Start menu.....	13
2-4	Quick List.....	14
Chapter 3	Using Call Features	15
3-1	Making a voice call	15
3-2	Retrieving voice mail messages.....	19
3-3	Responding to a voice call	19
3-4	Options during a call.....	20

Chapter 4	Synchronizing with ActiveSync.....	23
4-1	Microsoft ActiveSync	23
4-2	Installing ActiveSync on your PC.....	24
4-3	Connecting your phone to a PC	25
4-4	Creating a partnership.....	25
4-5	Synchronizing with a PC	26
4-6	Synchronizing with an Exchange Server.....	28
4-7	Creating a synchronization schedule	29
4-8	Remote synchronization.....	30
Chapter 5	Managing Your Smartphone	31
5-1	Personalizing your Smartphone	31
5-2	Improving performance	35
5-3	Turning on/off wireless mode	37
5-4	Keeping your Smartphone secure.....	37
5-4	Setting network options.....	41
5-5	Emergency restarting of your phone	41
5-6	Resetting your phone	41
5-7	Adding and removing programs	42
5-8	Managing and backing up files.....	43
Chapter 6	Getting Connected.....	47
6-1	Connecting to the Internet.....	47
6-2	Using your phone as an external modem.....	50
6-3	Using Opera Browser.....	52
6-4	Using Internet Explorer Mobile.....	54
6-5	Using Bluetooth®	56

Chapter 7	Messaging	59
7-1	Entering text and numbers	59
7-2	Setting up accounts	63
7-3	Managing accounts	65
7-4	Text and e-mail messages	66
7-5	VoiceMail Messages	69
7-6	MMS messaging	70
7-7	Using Pocket MSN	73
Chapter 8	Organizing Your Life	76
8-1	Using Contacts	76
8-2	Using Calendar	80
8-3	Using Tasks	82
8-4	Using Voice Notes	83
Chapter 9	Multimedia	84
9-1	Working with pictures and videos	84
9-2	Listening to music and watching videos	86
9-3	Using Java (MIDlet Manager)	90
Chapter 10	Office applications	92
10-1	Common features	92
10-2	ClearVue Document	93
10-3	ClearVue PDF	93
10-4	ClearVue Presentation	93
10-5	ClearVue Worksheet	94
Appendix	Notices	95

VDA IV specifications

Processor	Intel PXA270 312MHz
Operating system	Microsoft® Windows Mobile™ 5.0 (Smartphone)
Network system	UMTS (3GPP Band I), Tri-Band GSM (900/1800/1900), GPRS class 10
Memory	128MB Flash ROM. 64MB SDRAM
Display	2.2-inch 65K color TFT-LCD (240 x 320 pixels)
Expansion slot	One slot for micro SD cards
Wireless transmission	Bluetooth® v1.2 / USB v1.1 (Client + Host)
Audio	3.5 mm stereo earphone jack / built-in microphone / built-in speakerphone
Dimensions	109.5 mm x 46.9 mm x 18 mm
Weight	103.3 grams (with battery)
Battery	1100mAh removable/rechargeable Lithium-Ion
Battery life	Standby time: Up to 250 hours (GSM) / 280 hours (WCDMA) Talk time: 5 hours (GSM) / 2.5 hours (WCDMA)
Audio/Video	Music formats accepted: MP3, WMA, AAC and ACC+. AV Streaming supported
Internet browsing	HTTP and WAP2.0
Messaging	SMS, MMS 1.2 and E-mail
JAVA	J2ME (CLDC 1.1 + MIDP2.0)
Ringtones	40 channels polyphonic ringer & MP3

* USB Host only support the following devices: UID devices (mouse, keyboard,...) and Self-powered/Low-power storage devices (Flash disk, Hard Drives,...)

** The battery life will depend on multiple factors, including network and usage environment.

Package contents

Your package includes several accessories for the Smartphone. After unpacking, check the items against the list below and make sure that they are in good condition. If any item is missing or damaged, contact your dealer or retailer immediately.

Standard items

- VDA IV Smartphone
- USB sync cable
- AC adapter
- Companion CD
- Removable/ rechargeable 1100mAh Li-ion battery
- Stereo Headset
- Quick start guide
- User manual
- Warranty card

IMPORTANT

To avoid damaging your Smartphone and accessories, it is recommendable to operate this unit within a temperature range of 0 ~ 40 °C (68 ~ 86 °F) and 50% humidity. Anything that goes beyond or below this temperature range may damage the unit and/or shorten the battery life.

Chapter 1 Getting Started

1-1 Introducing the VDA IV Smartphone

The VDA IV 3G Smartphone comes with the latest mobile technology that fits your world into your hands. This Smartphone is a tri-band mobile phone with messaging capabilities, organizer, GPRS, and a micro SD card slot.

In addition to 128 MB of phone memory, the micro SD card extends storage space, allowing you to save photos, messages, texts, graphics, and audio files like no other mobile phone can, making it a perfect partner whether you're on or off the road.

With these features and many more, the VDA IV is sure to give you a satisfying mobile phone experience.

1-2 Getting to know your Smartphone

Front features

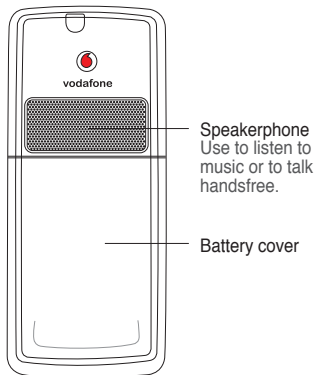


Power On-Off Button / Multi-color LED indicator
See table below for more information.

External display
Displays current time and date, battery power, signal strength, and current profile. See 5-1 Personalizing your Smartphone for more information.

Windows Media controls
See 9-3 Listening to music and watching videos for more information.

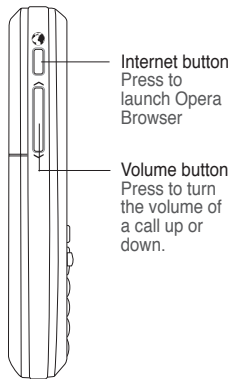
Back features



Speakerphone
Use to listen to music or to talk handsfree.

Battery cover

Side features

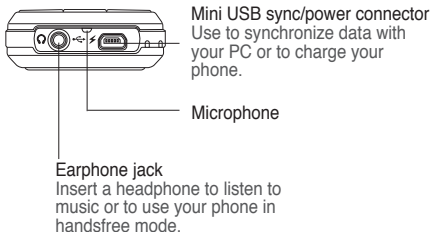


Internet button
Press to launch Opera Browser

Volume button
Press to turn the volume of a call up or down.

LED INDICATOR	STATUS
Steady amber	Battery is charging.
Steady green	Battery is fully charged.
Flashing green	Signal/network detected.
Flashing blue	Bluetooth is set to "On" or "Discoverable."
Flashing amber	Event alarm/notification

Bottom features

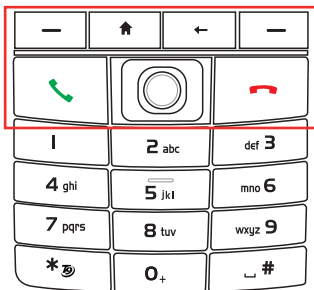



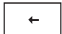


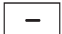



Mini USB sync/power connector
Use to synchronize data with your PC or to charge your phone.

Microphone

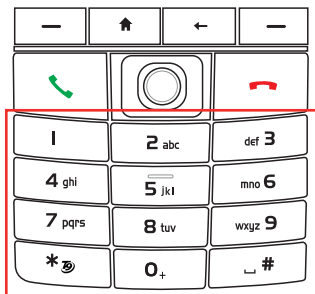
Earphone jack
Insert a headphone to listen to music or to use your phone in handsfree mode.



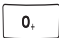

The Keypad



KEY		FUNCTION
	Home	Press to return to the Home screen.
	Back	Press to go back to the previous screen. Press to delete in a text field.
	Call	Press to answer a call or dial a number. Press twice to redial last number.
	End	Press to end a call. Press and hold to lock the keypad.
	Left soft	Use to select the command right above it on the main display. When the keypad is locked, press this key followed quickly by the Asterisk key to unlock.
	Right soft	Use to select the command right above it on the main display.
	4-way navigation Thumbstick	Use this to move up, down, right, and left through selections on the display. The primary use of the Up and Down navigation keys is for movement within menus and navigation through contacts. The primary use of the Left and Right keys is for change settings and edit text.
	Action	Located in the thumbstick, this button acts much like the Enter key on a keyboard. Press over the thumbstick to confirm an action. When you scroll to a check box, pressing the Action button selects or clears the check box.

The Keypad (Cont.)



KEY	FUNCTION	
	Alphanumeric keypad	<p>Press to enter text and numbers. For more information see 7-1 Entering text and numbers.</p> <p>You can also use the alphanumeric keypad to quickly select programs and settings on your Smartphone. Press the number on the keypad that corresponds to the number shown next to the program or setting that you want to select.</p>
	Asterisk key	<p>Press to switch between upper case, lower case, and caps lock within a text input mode; press and hold within a text field to display an entire list of input modes from which to make a selection. When the keypad is locked, press the left soft key followed quickly by this key to unlock the keypad.</p>
	0	<p>Press to enter a zero (0) in a text field. Press and hold to enter a plus (+) sign for making international calls.</p>
	#	<p>Press to enter a space in a text field. Press and hold to access the symbols menu to insert symbols in a text field.</p>

1-3 Installing the SIM card and battery

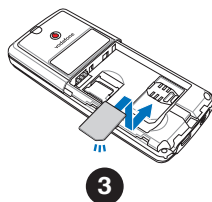
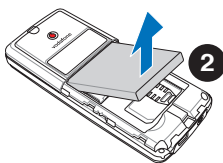
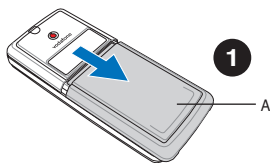
The phone operator provides you with a Subscriber Identity Module (SIM) card that stores your mobile phone number, phone book entries, SMS/MMS messages, etc. Install the SIM card before you install the battery.

NOTE

The SIM card usually comes embedded on a plastic card. Read the SIM card documentation before removing the SIM card. Remove any rough edges on the SIM card before you install it into the phone.

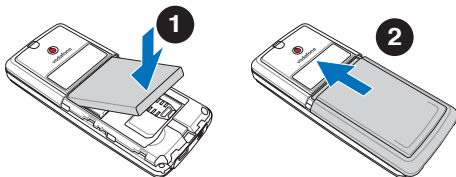
To install the SIM card

1. Remove the back cover by pressing down on the back cover release latch (A) with your thumb and sliding it open in the direction of the arrow shown in the illustration.
2. Remove the battery by lifting up from the bottom edge.
3. Position the SIM card with its nicked corner as shown and its contacts face down.
4. Insert the SIM card into the slot.



To insert the battery

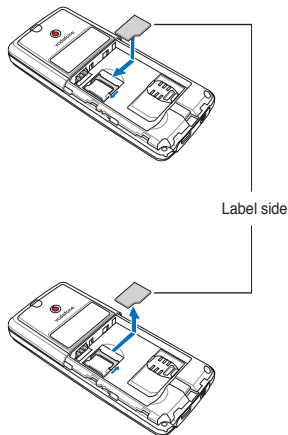
1. Insert the battery as shown, aligning the exposed metal contacts on the edge of the battery with the contacts on the phone.
2. Slide the back cover onto your phone.



1-4 Installing and removing a micro SD card

To install / remove a micro SD card

1. Remove the back cover and battery, in the way indicated previously.
2. You can find the micro SD card slot located above the SIM card slot. Slide the metallic part of the slot to the left, and flip it open.
2. **To install a micro SD card:** With the label side (usually the side with the card manufacturer's name) face up, and the barcode/serial number side face down, slide the card gently into the micro SD card slot.
- To uninstall a micro SD card:** Slide the micro SD card out.
3. Flip the metallic part of the cover back into its position, and slide it to the right to secure it.
4. Replace the battery and the phone cover as described previously.



CAUTION A micro SD card fits only in one orientation. DO NOT force the card into the slot!

1-5 Charging your Smartphone

Make sure that the battery is fully charged before using the phone for the first time. Initial battery charging may take about eight (8) hours. You can charge the battery when the phone is either on or off.

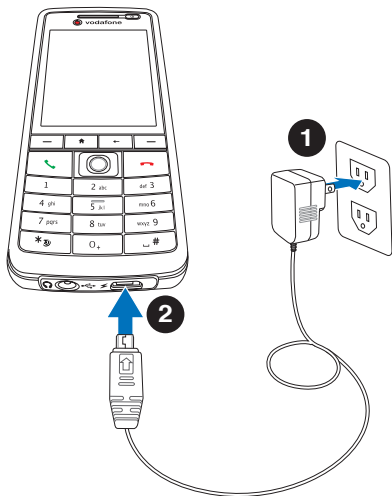
A battery icon on the main and external displays indicates the battery power level. Refer to “Status indicator icons” in **2-2 Home screen** for battery icon indications.

To charge the battery

1. Connect the AC adapter to a power source.
2. Connect the power cable plug to the mini USB sync and power connector.

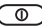

NOTE The power LED lights up amber to indicate that the battery is charging and lights up green when the battery is fully-charged.

WARNING Do not use a different model of AC charger than the one supplied with your Smartphone or compatible. Doing so will create dangers of, among others, damages to your device, fire, and/or electrical shocks.



1-6 Turning your Smartphone ON/OFF


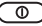
To turn ON your phone

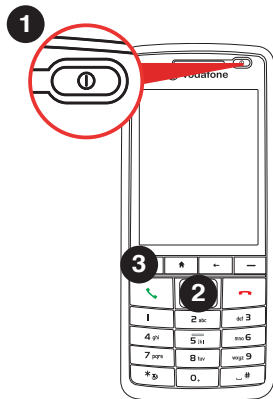
1. Press and hold the **Power button**  for approximately three seconds until the display turns on.
2. If you are asked for a Personal Identification Number (PIN) code, key in the code using the keypad, then press **Action** . The main display shows the idle screen.

Wait for your operator and Microsoft screens to load.

To turn OFF the phone

Do one of the following:

- Press and hold the **Power button**  for approximately three seconds until the Microsoft Mobile power off screen shows and wait for the display to turn off.
- Press and quickly release the **Power button**  and select **Power off** from the Quick List screen.



Chapter 2 Learning to Use Your Smartphone

2-1 Navigating

Your Smartphone has several keys to help you navigate through your Smartphone's screens and make selections.

Thumbstick

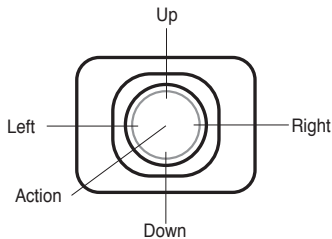
The thumbstick of an small joystick with four positions, and provides an easy way to move or scroll through selections on the screen.

The primary use of the Up and Down navigation keys is for movement within menus and navigation through contacts. The primary use of the Left and Right keys is change settings and edit text.

Action button

Press on the thumbstick as you would press the Enter key on a keyboard. Pressing the Action button on a highlighted item confirms that you want to carry out the function.

When you scroll to a check box, pressing the Action button selects or clears the check box.



Home key

The Home key takes you to the Home screen.

Back key

The Back key takes you to the previous screen. In a text field, the Back key deletes characters to the left of the cursor.

Soft keys

The two soft keys on your Smartphone are located directly below the display screen. Each soft key performs the action displayed right above it on the soft key bar. These two soft keys are context-sensitive; that is, the function of these two keys vary depending on what you are doing.

Alphanumeric keypad

You can use the alphanumeric keypad to quickly select programs and settings on your Smartphone. Press the number on the keypad that corresponds to the number shown next to the program or setting that you want to select.



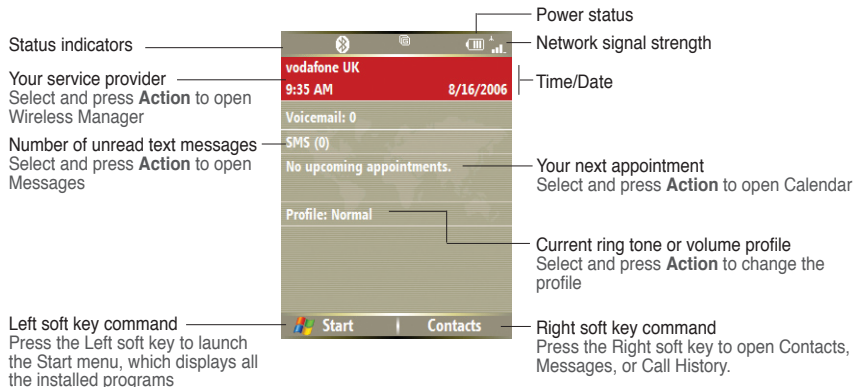
2-2 Home screen

The Home screen automatically displays when you turn on your Smartphone or leave it idle.

The top of the Home screen displays the status indicators, battery status and network signal. The center of the display shows the service provider, the time, your next appointment, your current profile, and the number of new text messages. Scrolling to any of these items and pressing **Action** opens the associated program.

NOTE Pressing **Home**  at any time takes you back to this screen.

To customize the Home screen (layout, color scheme, background image), press **Start > Settings > Home Screen**.



Status indicator icons

Status indicators appear at the top of the screen and on the Home screen. The following table lists common status indicators and their meanings.

	New e-mail		Signal strength	abc	Multipress input mode, lowercase	1	Line 1
	New voice mail		No signal	ABC	Multipress input mode, uppercase	2	Line 2
	New sms		Ringer off	ABC	Multipress input mode, caps lock		VoiceMail line 1
	New instant message		Speakerphone	t9	T9 text input mode, lowercase		VoiceMail line 2
	Voice call in progress		Vibration mode	T9	T9 text input mode, smart case		Voicemail Lines 1&2
	Data call in progress		Roaming	T9	T9 text input mode, caps lock		Voice mail when multiline is not supported
	Calls are forwarded		Faulty / Missing SIM card	123	Numeric input mode		Call forwarding line 1
	Call on hold		Radio off / No service	E	Edge available		Call forwarding line 2
	Missed call		Bluetooth		Edge signal strength		Call forwarding lines 1&2
	Battery level		Bluetooth headset		Edge available and roaming		GPRS available
	Low battery		Bluetooth A2DP headset		Beaming data		GPRS signal strength
	Battery charging		1XRTT connection available		Sync connection error		GPRS available and roaming
	No battery		1XRTT connection available and roaming		Pending alarm		3G active



NOTE

Actual status indicator icons may vary from the ones represented in this guide.




2-3 Start menu

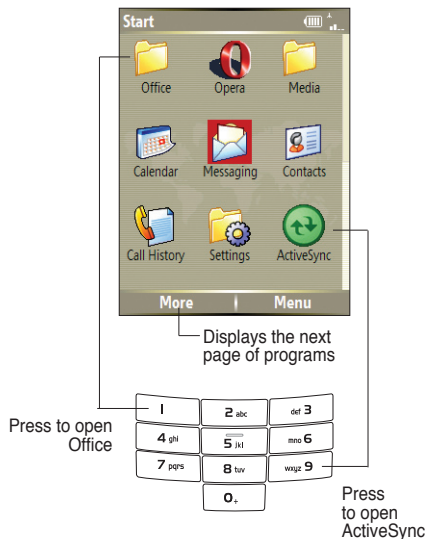
Your Smartphone comes with many pre-installed programs that you can start using right away. These programs can be accessed from the Start menu.

To use the Start menu

1. On the Home screen, press **Start** .
2. Do one of the following:
 - Scroll to a program using the navigation keypad and press **Action** .
 - Press the corresponding number on the alphanumeric keypad. For example, press **1** to open Office and **9** to open Settings.

You can add programs to the Start menu by downloading them from the internet on your PC and using ActiveSync to copy it to your phone.



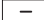
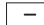
To remove programs, use File Explorer (**Start**  > **More**  > **File Explorer**) or Remove Programs (**Start**  > **Settings** > **Remove Programs**).

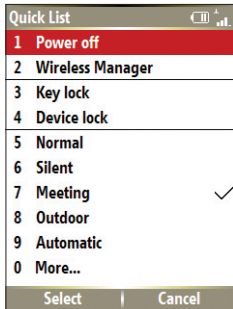




2-4 Quick List

The Quick List saves you time by providing quick and convenient access to a list of common commands, such as turning off the phone, locking the phone, turning off wireless capabilities, and changing the profile type.

To use the Quick List

1. Press and quickly release the **Power button**  to display the Quick List.
NOTE: If you press and hold too long, the phone will be powered off.
2. Select the command you want by scrolling to it and pressing **Action** , **Select** , or by pressing the corresponding number on the alphanumeric keypad.
3. To return to the Home screen, press **Cancel** .



QUICK LIST COMMAND	DESCRIPTION
Power off	Turns off the phone
Wireless Manager	Turns on/off the phone and/or all wireless capability.
Key lock	Locks the keypad so that you cannot accidentally press keys. To unlock the keypad, press Unlock  , and then press the * key  .
Device lock	Select how soon your phone will lock after the last keypress.
Normal / Silent / Meeting / Outdoor / Automatic / Headset / Car / Speakerphone	Select to make one of these preset profiles the active one. A check indicates the current profile. To change profile settings, you will need to go to Start > Settings > Profiles > Menu > Edit .


Chapter 3 Using Call Features



3-1 Making a voice call

Calling from the Home screen

To call from the Home screen

1. On the Home screen, start entering the phone number you want to call using the alphanumeric keypad.

If you entered the wrong number, press **Back**  to delete the last digit; press and hold to delete all digits.

2. Once you have entered the number, press **Send**  to make the call.
3. Press **End**  to end the call.

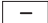


NOTE As you enter a phone number, the Smartphone searches Contacts, Call History, and the Speed Dial lists to find a matching name and/or number. When you see the name or number of the person you want to call listed, select it using the Up/Down navigation keys.


To redial the last number called, press **Send** twice from the Home screen.

Calling a Contacts entry

To call a Contacts entry

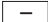
1. On the Home screen, press **Contacts** .
2. Select the contact name to call by using the Up/Down navigation keys.

TIP To quickly find a contact in a long list of contacts, you can enter the first few letters of the contact's name to narrow the search.

3. Press **Send**  to dial the default number assigned to the selected contact.

NOTE By default, the mobile telephone number (m) of a contact is dialed when you make a call from Contacts unless you specify otherwise.

To change the default number for a Contact

1. On the Home screen, press **Contacts** .
2. Select the contact whose default phone number you want to change.
3. Use the Left/Right navigation keys to change the default number. The letter to the right of the contact's name indicates the default number — m (mobile), w (work), or h (home).

Calling a number from the Call History list

To make a call from the Call History list

1. On the Home screen, press **Send**  or press **Start**  > **Call History**.
2. Select the number or name you want to call, and press **Send** .



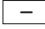


Calling using speed dial

You can create speed dials for frequently-called phone numbers or frequently-accessed items by simply pressing and holding one or two keys. You may choose Speed Dial entries from 2-99; Speed Dial 1 is reserved for voice mail access and the number is configured in your settings. You can create a Speed Dial for a phone number, a program on the Start menu, an E-mail address, or Web page address (URL) that is stored in Contacts.

NOTE You must assign a speed dial key to a phone number before you can use the speed dial feature.

You can create a speed dial only for a phone number, e-mail address, or Web page address that is stored in Contacts. You cannot create a speed dial for a contact stored in the SIM card.

To create a speed dial for a phone number, e-mail address, or URL address





1. On the Home screen, press **Start**  > **Contacts**.
2. Select a contact and press **Action**  to view the contact details.
3. Select the phone number, e-mail address, or URL address, for which you want to assign a speed dial and press **Menu**  > **Add to Speed Dial**.
4. Enter appropriate details in Name, Value, and Keypad assignment . In **Keypad assignment**, use the Left/Right navigation keys to select, or press **Action**  to view the full list of choices.
5. Press **Done** .

NOTE To quit at any time during this process, press **Menu**  > **Cancel**.

To make a call using speed dial

On the Home screen, press and hold the number on the keypad that you have assigned as a speed dial for a number. If the keypad assignment consists of two digits, press the first digit then press and hold the second digit.

To create a speed dial for an item on the Start menu

1. On the Home screen, press **Start** .
2. Select an item and press **Menu**  > **Add Speed Dial**.
4. Enter appropriate details in Name, Value, and Keypad assignment . In **Keypad assignment**, use the Left/Right navigation keys to select, or press **Action**  to view the full list of choices.
5. Press **Done** .

Making emergency calls

Calls to emergency service numbers can be made under any circumstances, even if you have locked the SIM card and/or your phone.

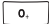

To place an emergency call

Enter the emergency number appropriate for your location, and press **Send** .

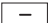

Making international calls

To make international calls, you must first enter the international prefix (+), followed by the country code and the rest of the phone number.

To place an international call

1. Press and hold **0**  on the keypad to enter a plus sign.
2. Enter the full phone number with the country code, area code, and phone number, and then press **Send** .



3-2 Retrieving voice mail messages

On the Home screen, press **Voice Mail**  or press and hold **1** . Follow the voice instructions to retrieve your messages.

3-3 Responding to a voice call

Depending on your settings, the phone rings, vibrates, or rings and vibrates when it receives an incoming call. When you receive a call, the screen displays the caller's name and phone number. If the caller is not in your Contacts list, the screen displays the number only. When you receive a phone call, you have the option to answer it or ignore it.

To answer a voice call

Press **Answer**  or **Send** .


To ignore a voice call

Press **Ignore**  or **End** .

NOTE Selecting **Ignore**  or **End**  will send the caller to your voice mailbox if it is enabled. If it is not, the caller will hear a busy tone.



3-4 Options during a call

Listed in the table below are the possible menu options for when a call is in progress. Some of these options are available only when multiple calls are in progress or during a conference call.

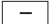

IN-CALL MENU OPTION	DESCRIPTION
Hold	Places the active call on hold.
Unhold	Activates the call that's on hold.
Mute on	Switches off the microphone for the active call (you can hear the caller but the caller can't hear you).
Mute off	Turns the microphone for the active call back on.
Speakerphone On/Off	Activates/deactivates the speakerphone. NOTE: You can also press and hold Send  during an active call.
Conference	Joins together all existing calls if you have subscribed to this service.
Turn Hands-free On/Off	Activates/deactivates the hands-free function. This function is only available if your phone has been connected to a hands-free kit. When activated, the call will be redirected to the hands-free kit, allowing you to talk using the remote earphone/microphone set.
Contacts	Opens the Contacts list.
View Contact	Display information about the caller.
View Calendar	Opens the Calendar program
Call History	Opens the Call History list.

Managing multiple calls

To answer another call

1. Press **Answer**  to place the first call on hold and answer the second call.
2. To end the second call and return to the first call, press **End** .


To hold a call to make a second call

1. Press **Hold**  to place the first call on hold and call a second number. When you have finished the second call, press **End**  to take you back to the first call.

To switch between calls

To switch between two calls, press **Swap** .

To set up a conference call

With multiple calls in progress, press **Menu**  > **Conference**.

Chapter 4 Synchronizing with ActiveSync

4-1 Microsoft ActiveSync

With ActiveSync, you can synchronize the information on your PC with the information on your Smartphone. Synchronization compares the data on your phone with your PC and updates both with the most recent information. You can also use synchronization to add new programs to your phone.

Before you can synchronize your phone with your PC, you need to complete the following steps:

1. Install ActiveSync on your PC.
2. Connect your phone to the PC.
3. Create a partnership between the two devices.

NOTE For more information about synchronization, see the ActiveSync Help on your PC.

4-2 Installing ActiveSync on your PC

The ActiveSync program is already installed on your Smartphone. To synchronize information on your phone with your PC, you must also install ActiveSync on your PC. Install ActiveSync from the Getting Started CD that came with your product package.

NOTE Before starting the ActiveSync installation, make sure that you have Microsoft® Outlook® installed on your PC. If you do not have Outlook, install the Microsoft® Outlook® from the Getting Started CD. If you have Outlook 98 or Outlook 2000 installed, you are encouraged to update to the Outlook bundled in the Getting Started CD.

IMPORTANT Do not connect your phone to your PC until you have finished installing ActiveSync.

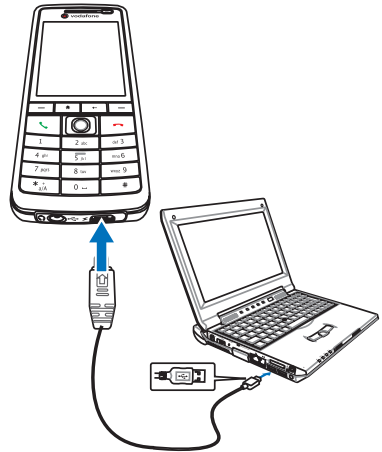
To install ActiveSync on your PC

1. Place the Getting Started CD into the optical drive of your PC and follow the on-screen instructions to install ActiveSync.
2. Click **Start Here** to display the Overview screen.
3. If you have not installed Outlook, install it now. Click **Install Outlook** and follow the screen instructions to complete the installation.
4. Click **Install ActiveSync**, then follow the on-screen instructions to complete installation.

4-3 Connecting your phone to a PC

To connect your Smartphone to a PC

1. When prompted, connect the appropriate end of the USB sync cable to the mini USB and power connector at the bottom of your phone and the other end to a USB port on your PC.
2. ActiveSync will autostart when it detects your phone, and the Smartphone Sync Setup Wizard will open.



4-4 Creating a partnership

The wizard steps you through the steps to create a partnership. In the Sync Setup Wizard, you can do the following:

- Create a synchronization relationship between your PC and the phone.
- Configure an Exchange Server connection to synchronize directly with Exchange Server. To synchronize your phone with Exchange Server, obtain the name of the Exchange Server, your user name, password, and domain name from your administrator before completing the wizard.
- Choose information types (Calendar, Contacts, Tasks, Outlook E-mail, Favorites) to synchronize.

When you finish the wizard, ActiveSync synchronizes your phone automatically. Once synchronization completes, you can disconnect your phone from your PC. After the first synchronization, you will notice that the information from your PC that you selected now appears on your Smartphone.

4-5 Synchronizing with a PC

Changing information to synchronize

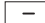


By default, ActiveSync does not automatically synchronize all Outlook information. You can use ActiveSync options to turn synchronization for specific information types on and off:

1. On the Home screen, press **Start** > **ActiveSync**.
2. Press **Menu** > **Options**.
3. Do one or more of the following:
 - Select the check box for the items you want to synchronize.
 - Clear the check box for any items you do not want to synchronize.
 - To customize synchronization of a PC, select the PC name then press **Menu** > **Settings**.
 - To customize synchronization of a particular type of information, select the information type then press **Settings** .
 - To stop synchronizing with a PC completely, select the PC name and press **Menu** > **Delete**.

NOTE E-mail can be synchronized with only one PC.

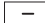

Using USB sync cable

When you connect your phone to the PC, ActiveSync should detect it automatically and start synchronizing.

1. Connect your phone to a PC using the USB sync cable.
2. ActiveSync should detect it automatically and start synchronizing. If not, on the Home screen, press **Start**  > **ActiveSync**.
3. Press **Sync**  to start synchronizing.
4. Press **Stop**  to stop synchronization before it completes.

Using Bluetooth

You can synchronize your phone with a PC using local wireless technologies, such as Bluetooth.

1. Follow the instructions in ActiveSync Help on the PC for configuring Bluetooth on your PC to support ActiveSync.
2. On the Home screen, press **Start**  > **ActiveSync**.
3. Press **Menu**  > **Connect via Bluetooth**. Ensure that the phone and PC are within close range.

NOTE

If this is the first time you have connected to this PC using Bluetooth, you must complete the Bluetooth wizard on the phone and set up a Bluetooth partnership with the PC before synchronizing. For more information about setting up a Bluetooth partnership, see “Creating a Bluetooth partnership” in **6-4 Using Bluetooth**.

4. Press **Sync**.
5. When finished, press **Menu**  > **Disconnect Bluetooth**. To preserve battery power, turn off Bluetooth.

4-6 Synchronizing with an Exchange Server

To set up an Exchange Server connection, you will need to get the name of the server and the server domain name from your service provider or system administrator. You must also know your Exchange user name and password.

NOTE Before you change synchronization settings on the phone, disconnect it from your PC.

1. On the Home screen, press **Start** > **ActiveSync** > **Menu** > **Configure Server**. If you have not yet set up sync with Exchange Server, this will say **Add Server Source**.
2. In **Server address**, enter the name of the server running Exchange Server, and press **Next** .
3. Enter your user name, password, and domain name, and press **Next** .
If you want the phone to save your password so that you will not need to enter it again when connecting, select the **Save password** check box.
4. Select the check boxes for the types of information items that you want to synchronize with the Exchange Server.
5. To change available synchronization settings, select the type of information, and press **Menu** > **Settings**.
6. To change the rules for resolving synchronization conflicts, **Menu** > **Advanced**.
7. Press **Finish** .

4-7 Creating a synchronization schedule

You can create a schedule for automatically synchronizing information on your Smartphone with your PC or with Microsoft Exchange Server.

To set up a synchronization schedule with your PC, you must use ActiveSync on the PC. For more information on synchronization, see ActiveSync Help on the PC.

To set up a synchronization schedule with an Exchange server, you must use ActiveSync on your phone. See the next section for details.

Scheduling synchronization

Before changing synchronization settings on the phone, disconnect the phone from your PC.

NOTE The first time you use ActiveSync you may need to click in the link **set up your device to sync with it** from ActiveSync main screen.

To schedule a synchronization

1. On the Home screen, press **Start** > **ActiveSync** > **Menu** > **Schedule**.
2. Do one or more of the following:

TO SYNCHRONIZE	DO THIS
Automatically as items arrive.	Under Peak times , select As items arrive . It's more cost-efficient to synchronize on at regular intervals when mail volume is high. Under Off-peak times , select As items arrive . This can be more cost-efficient than synchronizing on a regular schedule when mail volume is low.

TO SYNCHRONIZE	DO THIS
When you are working, or e-mail volume is high.	Select an appropriately frequent interval in the Peak times list.
When e-mail volume is low.	Select a longer interval or As items arrive in the Off-peak times list.
While roaming	Select the Use above settings while roaming check box. To minimize roaming charges, clear the check box, and synchronize manually while roaming.
When you press Send in Messaging on the phone	Select the Send outgoing items immediately check box.

NOTE To change peak time settings to more accurately adjust to periods of e-mail volume for you, press **Menu** **> Peak Times**.

4-8 Remote synchronization

Remote synchronization is when your phone is synchronized over a wireless connection instead of using a direct local connection to a PC. Synchronizing remotely with your PC may depend on your network configuration. For example, you may need to set up a virtual private network (VPN) connection to your network.


To synchronize remotely, you need to set up a connection first and then configure your phone. For more information on remote synchronization, see the ActiveSync Help on the PC.

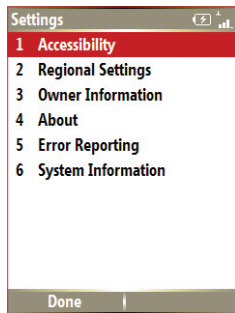
Chapter 5 Managing Your Smartphone

5-1 Personalizing your Smartphone

Settings screens

You can view and change the settings on your Smartphone to make it look and behave according to your preferences. This includes changing the Home screen layout, adding your own ring tone, and set options for received calls, call forwarding or call waiting.

On the Home screen, press **Start**  **> Settings** to display the Settings screen.



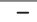




NOTE Selecting **More** from the Settings screen will display a second screen of Settings options.

Personalizing your Home screen

To personalize your Home screen

1. On the Home screen, press **Start**  > **Settings** > **Home Screen**.
2. Make your desired changes and press **Done** .

To personalize the Home screen with your own image

1. On the Home screen, press **Start**  > **Media** > **Pictures & Videos**.
2. Select an image to use as the background image and press **Action** .
3. Press **Menu**  > **Use as Home Screen**.
4. Use the **Left/Right** navigation keys to select the display area and press **Next** .
5. Use the **Left/Right** navigation keys to adjust the transparency and press **Finish** .

Setting the date, time, and alarm

To set the date and time


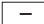
1. On the Home screen, press **Start**  > **Settings** > **Clock and Alarm** > **Date and Time**.
2. Enter the correct information and press **Done** .

To set an alarm

1. On the Home screen, press **Start**  > **Settings** > **Clock and Alarm** > **Alarm**.
2. Enter the correct information and press **Done** .

Changing regional settings

To change regional settings

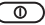
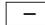
1. On the Home screen, press **Start**  > **Settings** > **More** > **Regional Settings**.
2. In **Language**, select your preferred language for the phone interface and menus.
3. In **Locale**, select your current location. The Locale option automatically changes the format of the remaining options, such as date, time, and currency, to reflect those used in that locale.
4. Press **Done**  after you have finished making changes.

NOTE To activate the new language settings, you will need to turn the phone off and back on.

Changing profile settings

A profile determines how you get notified of events such as incoming calls, upcoming appointments, and new messages. Your current profile is displayed on the Home screen.

To quickly change the current profile

To quickly switch to a different profile, press and quickly release the **Power Button**  and scroll to the desired profile in the Quick List screen and press **Select** . To open the second page of the Quick List screen for more profile options, select More.

NOTE When profile is set to **Automatic**, your phone will automatically switch to Silent mode whenever you have a meeting set up in Calendar.

To modify a profile

1. On the Home screen, press **Start** [] > **Settings** > **Profiles**.
2. Scroll to the profile you want to change, press **Menu** [], and select **Edit**.
3. Change the settings and press **Done** [].

NOTE To restore the default settings of a profile, press **Menu** [] and select **Reset to default**.

Customizing sounds for ring tones

Use Sounds settings to customize the sounds for ring tones, notifications, reminders, alarm clock, alert, and key tones. The phone comes with 20 pre-installed polyphonic ring tones from which you can choose.


To change the sound

1. On the Home screen, press **Start** [] > **Settings** > **Sounds**.
2. Highlight the item for which you want to change the sound.
3. Do one of the following:
 - Scroll left/right to select a different sound.
 - Press **Action** [] to open the Select an Item screen, which allows you to select from a full list of sounds available for that event.

To use your own sound

1. Locate the sound file on your PC and copy the file.

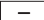

NOTE The file must be in .wav, mid, .wma, or .mp3 format.

2. Connect your phone to the PC.
3. Open ActiveSync on your PC and click **Explore**.
4. Go to the **Storage\Application Data\Sounds** folder on your Smartphone and paste the file.
5. On the Home screen of your phone, press **Start**  > **Settings > Sounds**.
6. Highlight the item to customize and scroll left/right to find the sound file.

Entering your contact information

The Owner Information screen is for entering and displaying personal information, such as your name, phone number, and e-mail address. Entering this information is strongly recommended as it allows the person who finds the phone to be able to contact you in case it is lost.

To enter owner information

1. On the Home screen, press **Start**  > **Settings > More > Owner Information**.
2. Enter your details and press **Done** .

5-2 Improving performance

Changing accessibility settings

To change accessibility settings

1. On the Home screen, press **Start**  > **Settings > More > Accessibility**.

- You may set your preferences for the following:

System font size: Set the size of all the displayed text as “normal” or “large”.

NOTE System font size only affects submenus. The main screen or the text below icons will not be affected.

Multipress time out: Set the length of time to wait between keypresses when entering text in Multipress mode.

Confirmation time out: Set the delay before an unconfirmed action times out.

In-call alert volume: Set the volume for incoming call or receiving new message alerts while you are on the phone.

- Press **Done** when finished.

Changing power settings

Use Power Management to check the battery level and to configure power-saving settings, such as backlight and display time-outs.

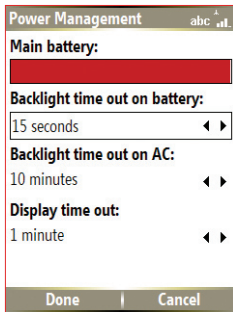
- On the Home screen, press **Start** > **Settings > Power Management**.

The first item showed is **Main battery** indicator, where you can see how much power is left in the battery. This item is not adjustable.

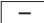
- You may set your preferences for the following:

Backlight time out on battery: Set the amount of time for the phone to be idle before the backlight turns off.

In **Backlight time out on AC:** Set the amount of time for the phone to be idle before the backlight turns off when using AC power.



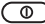

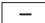
Display time out: Set the time limit for the phone to be idle before the screen turns off.

3. Press **Done**  when finished.



5-3 Turning on/off wireless mode

To turn on/off Bluetooth

Do one of the following:

- Press and quickly release the **Power button**  to display the Quick List screen and select **Wireless Manager**. Select **Bluetooth** and press **Action** .
- On the Home screen, press **Start**  > **Settings** > **Connections** > **Bluetooth**. Select **On**, **Discoverable**, or **Off**.

To turn on/off radio mode

Press and quickly release the **Power button**  to display the Quick List screen and select **Wireless Manager**. Select **All** and press **Action**  to toggle between on and off mode.

NOTE Turn off all radio interfaces of your phone when on an aircraft or in a hospital. You will not be able to make calls or send messages/emails but will still be able to use the organizer functions of your phone.

5-4 Keeping your Smartphone secure

Customize the level of security you want your phone to have by locking the keypad, the SIM card, or the entire phone.

Locking the keypad and multimedia player controls

To lock the keypad

Press and quickly release the **Power button**  to display the Quick List screen and select **Key lock**.

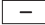

To unlock the keypad

Press **Unlock**  followed quickly by the *** key** .

Locking the SIM card



Locking the SIM card prevents you and others from using the Smartphone until the correct password is entered, but you will still be able to make emergency calls. When you turn on the phone, you will be asked to enter your PIN1 password.

To lock the SIM card and set the PIN

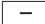

1. On the Home screen, press **Start**  > **Settings** > **Security** > **Enable SIM PIN**.
2. Enter the password (SIM card's PIN1), and press **Done** .

Once the PIN is enabled, your Smartphone will ask you to enter the PIN whenever you turn it on.

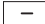
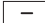
To unlock the SIM card

1. On the Home screen, press **Start**  > **Settings** > **Security** > **Disable SIM PIN**.
2. Enter the password (SIM card's PIN1), and press **Done** .

To change the PIN

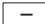
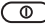

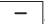
1. On the Home screen, press **Start**  > **Settings** > **Security** > **Change SIM PIN**.
2. Enter the original PIN1 code.
3. Enter and confirm the new PIN, and then press **Done** .

To change PIN2

1. On the Home screen, press **Start**  > **Settings > Security > Change PIN2**.
2. Enter the original PIN2 code (SIM card's PIN2).
3. Enter and confirm the new PIN2, and then press **Done** .


Locking the phone

To lock the phone

1. Do one of the following:
 - On the Home screen, press **Start**  > **Settings > Security > Device Lock**.
 - Press and quickly release the **Power button**  to display the Quick List screen and select **Device lock**.
2. Select the **Prompt if device unused for** check box by pressing **Action** .
3. Scroll down to the field below and select the amount of time for the phone to be inactive before it locks automatically.
4. In **Password type**, select the type of password you want to use.
5. Enter and confirm your password, and then press **Done** .

Controlling outgoing calls

Fixed dialing allows you to restrict your outgoing calls to selected phone numbers, if supported by your SIM card. You need the PIN2 code for this function. When this function is active, you can only call those phone numbers that are included in the fixed dialing list. Call barring, on the other hand, blocks certain types of call. Before you can use it, you must set up a Fixed dialing list.

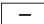
1. On the Home screen, press **Start** > **Settings** > **Phone** > **Fixed Dialing**.
2. Select **Enable fixed dialing** by pressing **Action**  and then press **Done** .
3. Enter your SIM PIN 2, and press **Done** . Once fixed dialing has been turned on, you can begin to store fixed dialing numbers.
4. Press **Menu** > **Edit Numbers**.
5. Press **Menu** > **Add** and enter the phone number to add to your fixed dialing list.
6. Press **Done** .
7. Repeat steps 2 and 3 to add more numbers.

Blocking incoming/outgoing calls

Emergency calls can still be made with Call Barring on.

1. On the Home screen, press **Start** > **Settings** > **Phone** > **Call Barring**.
2. In **Block incoming calls**, select **Off**, **When roaming**, or **All calls**.
3. In **Block outgoing calls**, select **Off**, **Int'l except to home**, **Int'l calls**, or **All calls**.
4. Press **Done** .

5-4 Setting network options

To change the phone network, press **Start**  > **Settings** > **Phone** > **GSM/3G Networks**. You may choose between GSM, 3G or automatic, which automatically detects your network every time you power on your phone.

NOTE Changes on the network changes will only take effect after the phone has been restarted. Turn the phone off and on to apply changes.

5-5 Restarting your phone

Occasionally, you may need to restart your phone; for example, when a program is not performing properly or the phone does not respond to key presses.

To restart the phone

1. Remove the battery.
2. Reinsert the battery and turn on your phone.

5-6 Resetting your phone

Resetting your phone will remove all data from memory and restore the phone back to the factory default settings.

NOTE When you reset your phone, all data entered in your device including all files, system settings, and additional programs you have installed, will be erased.
