

# Chapter 2

## *Learn the basics*

◆	<b>Entering information .....</b>	<b>2-2</b>
	Entering text using the Input Panel .....	2-2
	Writing on the screen .....	2-5
	Drawing on the screen .....	2-8
	Recording a message .....	2-9
	Using a preset message .....	2-10
◆	<b>Finding and organizing information .....</b>	<b>2-11</b>
	Using the File Explorer .....	2-12
◆	<b>Customizing your device .....</b>	<b>2-13</b>
	Adjusting settings .....	2-13
	Selecting sounds and notifications .....	2-15
	Using AsusLauncher .....	2-16
	Adding or removing programs .....	2-20
◆	<b>ASUS utilities .....</b>	<b>2-23</b>
	ASUS SmartKeeper .....	2-23
	ASUS Backup .....	2-29
	ASUS Settings .....	2-35
◆	<b>Bundled programs .....</b>	<b>2-39</b>
	ASUS Programs .....	2-39
	Games .....	2-39
	Calculator .....	2-40
	File Explorer .....	2-40
	Microsoft Reader .....	2-40
	MSN Messenger .....	2-41
	Pocket MSN .....	2-41
	Pocket Word .....	2-41
	Pocket Excel .....	2-42
	Pictures .....	2-42
	Terminal Services Client .....	2-42

# Entering information

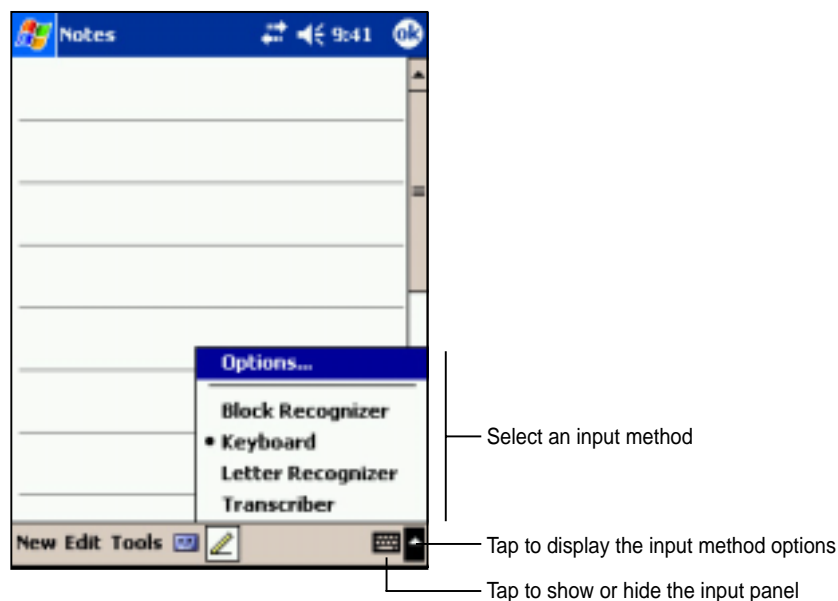
You can enter information in your device in any of the following ways.

- Use the input panel to enter text using the soft keyboard or the Letter Recognizer
- Write directly on the screen with the stylus
- Draw pictures on the screen
- Speak into the device microphone to record a message
- Use the Microsoft® ActiveSync® to synchronize or copy information from your desktop computer to your device

## Entering text using the Input Panel

Use the Input Panel to enter information in any program on your device. you can either type using the **soft keyboard** or write using the **Letter Recognizer**, **Block Recognizer**, or **Transcriber**. In either case, the characters appear as typed text on the screen.

To show or hide the input panel, tap the **Input Panel** button. Tap the **arrow** next to the Input Panel button to see your options.



### To type with the soft keyboard:

1. Tap the arrow next to the Input Panel button, then tap **Keyboard**.

---


**NOTE** To demonstrate, open **Notes**.

---

2. Tap the keys with the stylus to enter information.

When you use the Input Panel and the soft keyboard, your device anticipates the word you are typing and displays it above the Input Panel. When you tap the displayed word, it is inserted into your text at the insertion point. The more you use your device, the more words it learns to anticipate.



- 
- NOTE** To change options on word completion feature:
1. Tap .
  2. Tap **Settings**.
  3. Tap **Personal** tab.
  4. Tap **Input**.
  5. Tap **Word Completion** tab.
  6. Make your desired changes.
- 

## To use Letter Recognizer:

With the Letter Recognizer, you can write letters on the screen with the stylus as you would on paper.

1. Tap the arrow next to the Input Panel button, then tap **Letter Recognizer**.
2. Write a letter in the box.

When you write a letter, it is converted to a typed text that appears on the screen. For instructions and demonstration on using the Letter Recognizer, tap the **question mark** next to the writing area.

## To use Block Recognizer:

With the Block Recognizer, you can input character strokes that are similar to those use on other devices.

1. Tap the arrow next to the Input Panel button, then tap **Block Recognizer**.
2. Write a letter in the box.

When you write a letter, it is converted to a typed text that appears on the screen. For instructions and demonstration on using the Block Recognizer, tap the **question mark** next to the writing area.

## To use Transcriber:

With Transcriber, you can use the stylus to write anywhere on the screen as you would on paper. Unlike Letter Recognizer and Block Recognizer, you can write a sentence or additional information. Pause after writing and let Transcriber convert the written characters to typed characters.

1. Tap the arrow next to the Input Panel button, then tap **Transcriber**.
2. Write anywhere on the screen.

For instructions and demonstration on using Transcriber, with Transcriber open, tap the **question mark** in the lower right corner of the screen.

## To edit typed text:

1. Select the text that you wish to edit using either one of the following:
  - drag the stylus over the text
  - tap twice to select a word
  - tap three times to select a paragraph
2. Tap **Edit** on the Command bar and select an action, or use one of the tools in the Input Panel to enter a new text.

## Writing on the screen

In any program that accepts writing, such as the Notes program, and in the Notes tab in Calendar, Contacts, and Tasks, you can use the stylus to write directly on the screen. Write the way you do on paper. You can edit and format what you have written and convert the information to text at a later time.

### To write on the screen:

1. Open the **Notes** program.
2. Tap the **Pen** button to switch to the writing mode. The screen displays blank space with lines to help you write.
3. Write your text.



Tap the Pen button and use your stylus like a pen

---

**NOTE** Some programs that accept writing may not have the Pen button. See the documentation for that program to find out how to switch to writing mode.

---

## To edit your writing:

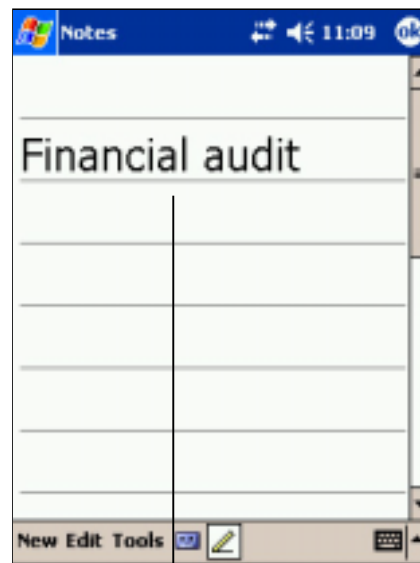
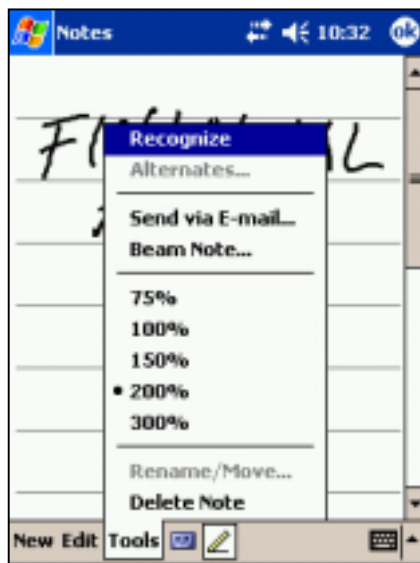
1. Tap and hold the stylus next to the text that you wish to select until the insertion point appears.
2. Without lifting, drag the stylus across the text to select it.  
If you accidentally write on the screen, tap **Tools**, then **Undo** and try again. You can also select text by tapping the **Pen** button to deselect it, then dragging the stylus across the screen.
3. Tap **Edit** on the Command bar and select an action, or use one of the tools in the Input Panel to enter a new text.

## To convert writing to text:

- Tap **Tools**, then **Recognize**.

## To select a zoom level:

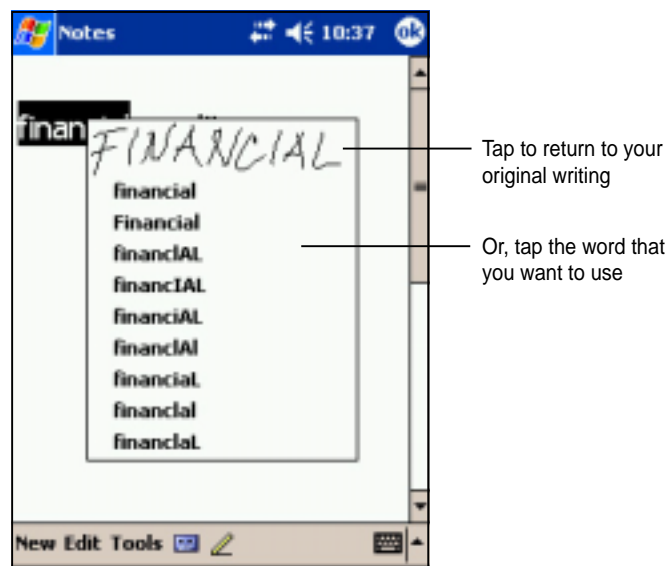
- Tap **Tools**, then tap a zoom percentage from the options.



The writing is turned into text

If the conversion is incorrect, you can select different words from a list of alternates or return to the original writing.

1. Tap and hold the incorrect word.
2. When the pop-up menu appears, tap **Alternates** to display a list of alternate words for the selection.
3. Tap the word that you want to use, or tap the writing at the top of the menu to return to the original writing.



## Tips for getting good writing recognition

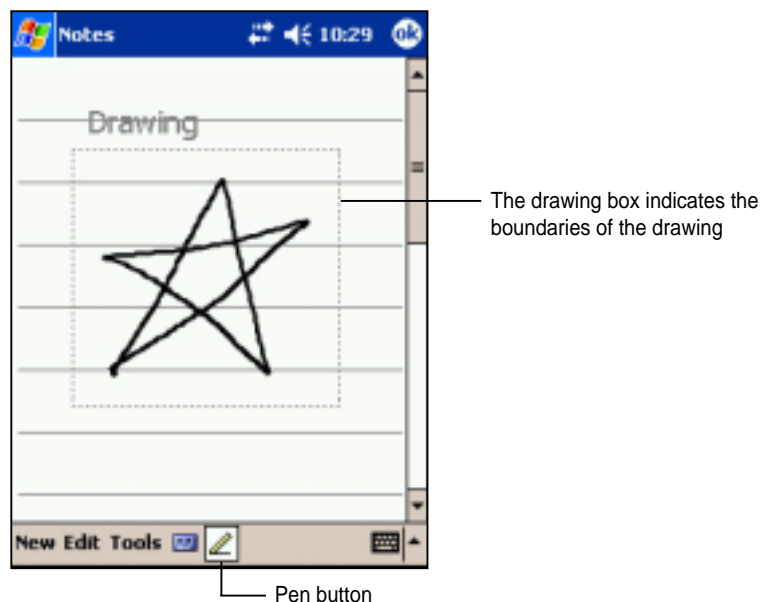
- Write neatly.
- Write on the line and draw descenders below the line. Write the cross of the “t” and apostrophes below the top line so that they are not confused with the word above. Write periods and commas above the line.
- For better recognition, try increasing the zoom level to 300% using the Tools menu.
- Write the letters of a word closely and leave big gaps between words so that the device can easily tell where the words begin and end.
- Hyphenated words, foreign words that use special characters such as accents, and some punctuation cannot be converted.
- If you add writing to a word to change it after the word has been recognized, the writing that you added will be included when you try to recognize the writing again.

## Drawing on the screen

You can draw on the screen in the same way that you write on the screen. The difference between writing and drawing on the screen is how you select items and how they can be edited. For example, selected drawings can be resized, while writing cannot.

### To create a drawing:

1. Use the stylus to make a stroke three ruled lines high. A dotted box appears.
2. Make your drawing in or touching the drawing box and crossing three ruled lines. If the drawing does not cross three lines, it changes to writing.



---

**NOTE** To easily work on or view your drawing, change the zoom level by tapping Tools and selecting your desired zoom.

---

### To edit your drawing:

1. Tap and hold the stylus on the drawing until the selection handle appears. To select multiple drawings, deselect the **Pen** button, then drag to select the drawings you want.
2. Tap and hold the selected drawing, then tap an editing command on the pop-up menu or tap a command on the Edit menu.
3. Resize the drawing by deselecting the **Pen** button (if selected) and dragging a selection handle to your desired size.



## Recording a message

In any program where you can write or draw on the screen, you can also quickly capture thoughts, reminders, and phone numbers by recording a message. In Calendar, Tasks, and Contacts, you can include a recording in the Notes tab. In the Notes program, you can either create a stand-alone recording or include a recording in a written note. If you want to include the recording in a note, open the note first. In the Inbox program, you can add a recording to an e-mail message.

### To create a recording:

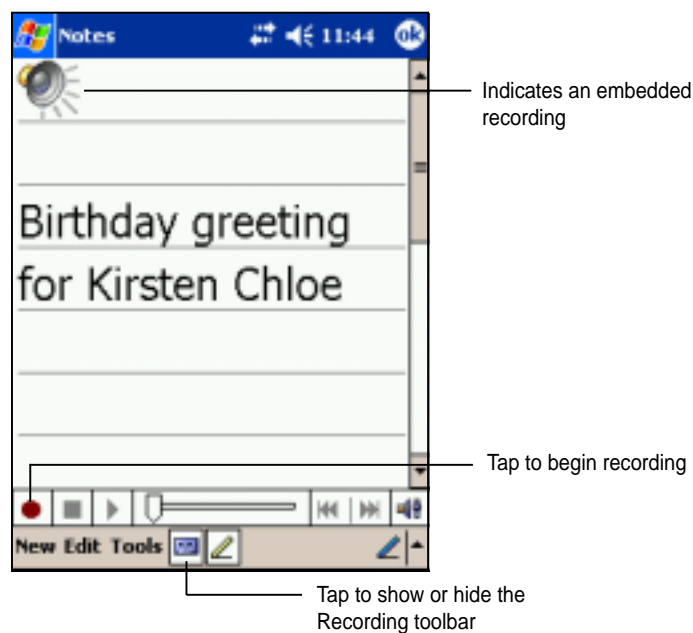
1. Hold your device with the microphone near your mouth or other source of sound.
2. Press and hold the **Record** button on the device until you hear a beep.
3. While holding the Record button, make your recording.
4. To stop recording, release the **Record** button. You will hear two beeps. The new recording appears in the Note list, or as an embedded icon.

---

**NOTE** You can also make your recording using the buttons on the Recording toolbar.

---

5. To play the recording, tap it from the list, or if embedded in a note, tap the speaker icon.

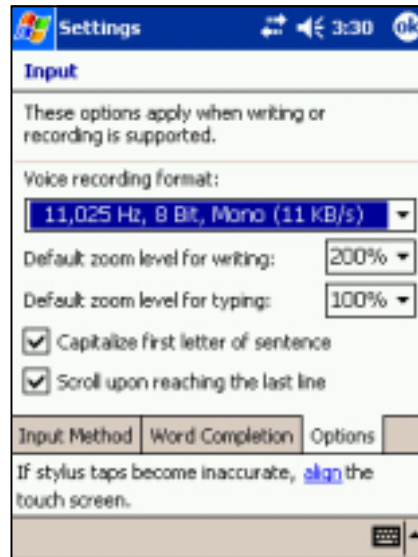


## To change the recording format:

1. In the note list, tap **Tools** then **Options**.
2. Tap the **Global Input Options** link.
3. Tap the **Options** tab.

**Mobile Voice** is a 2.4KB audio codec. It is the recommended format because it provides good voice recording and less storage space.

**Pulse Code Modulation (PCM)** provides slightly better sound quality but takes up 50 times more storage space than Mobile Voice recordings.



## Using a preset message

When using Inbox or MSN Messenger, use **My Text** to quickly insert preset or frequently used messages into the text entry area. To insert a message, tap **My Text** and tap your desired message.

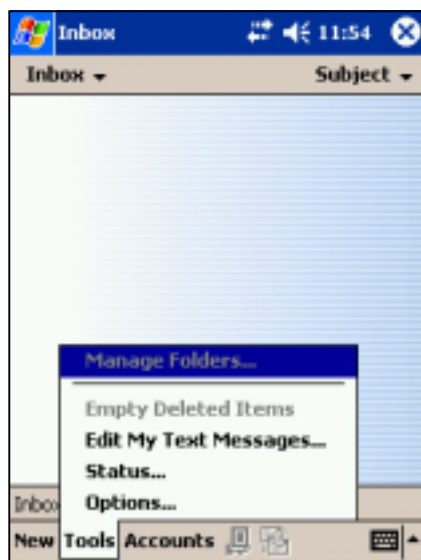
---

**NOTE** You can add text after inserting a My Text message. However, you have to add it before sending the message.

---

## To edit a preset message:


1. Tap **Tools**, then **Edit My Text Messages**.
2. Select a message and make your desired changes.

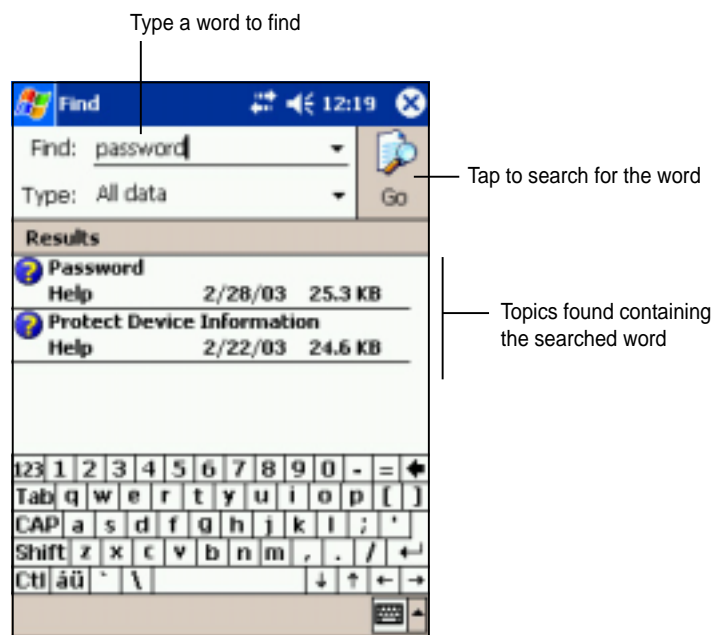


# Finding and organizing information


The **Find** and **Help** features on your device helps you quickly locate information.

## To find information:

1. Tap , then tap **Find**.
2. Enter the text that you want to find, select a data type, then tap **Go** to start the search. To quickly find information that is taking up space on your device, select **Larger than 64 KB** in Type.




## To use the Help feature:

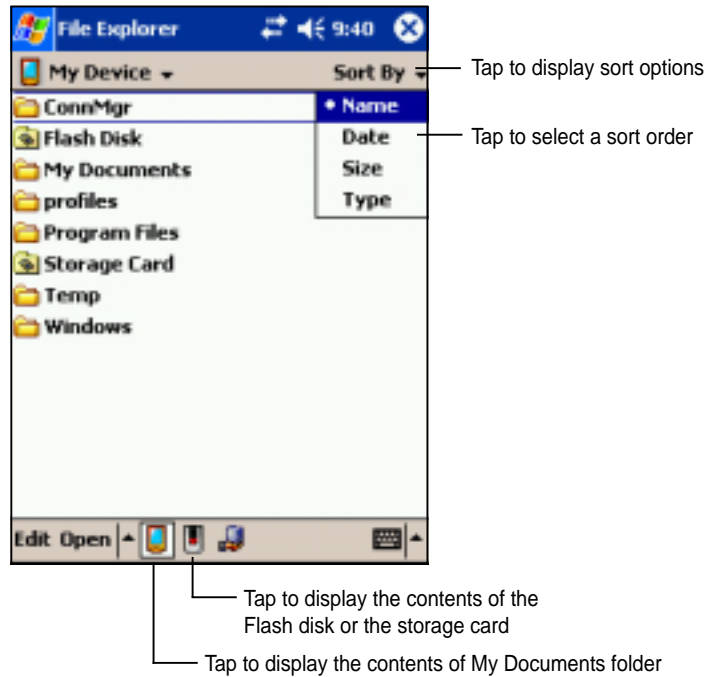
1. Tap , then tap **Help**.
2. Tap a link to the topic that you wish to display.



# Using the File Explorer

## To use the File Explorer to find and organize files:

1. Tap , then tap **Programs**.
2. In the Program screen, tap the **File Explorer** icon to display the files in your device.




# Customizing your device

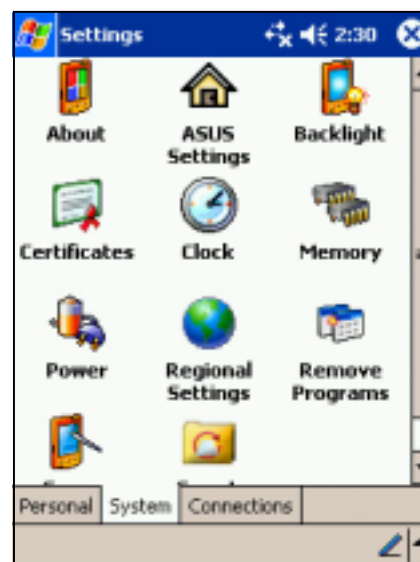
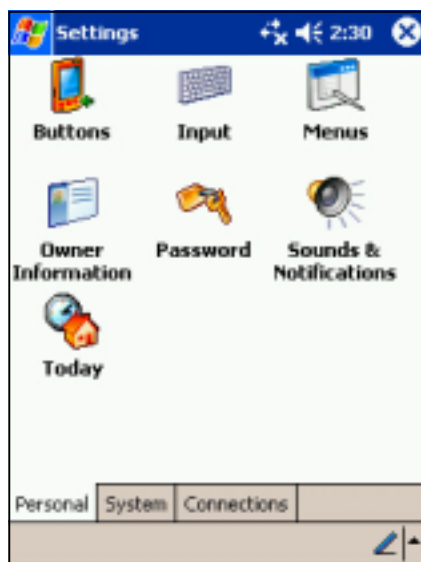
You can customize your device by adjusting the settings, using the built-in programs, and installing additional software.

## Adjusting settings


You can adjust the device settings to your preference.

### To see the available options:

1. Tap  , then tap **Settings** to display the Settings screen.
2. Tap the **Personal** or **System** tab on the bottom of the screen.



You may want to adjust any one of the following items.

- **Clock.** Change the time or set alarms.
- **Menus.** Customize what appears on the  menu, and enable a pop-up menu from the **New** button.
- **Owner information.** Enter your contact information.
- **Password.** Add security to your device.
- **Power.** Display the remaining battery power indicated by a bar chart.
- **Today.** Customize the look and information displayed on the Today screen.

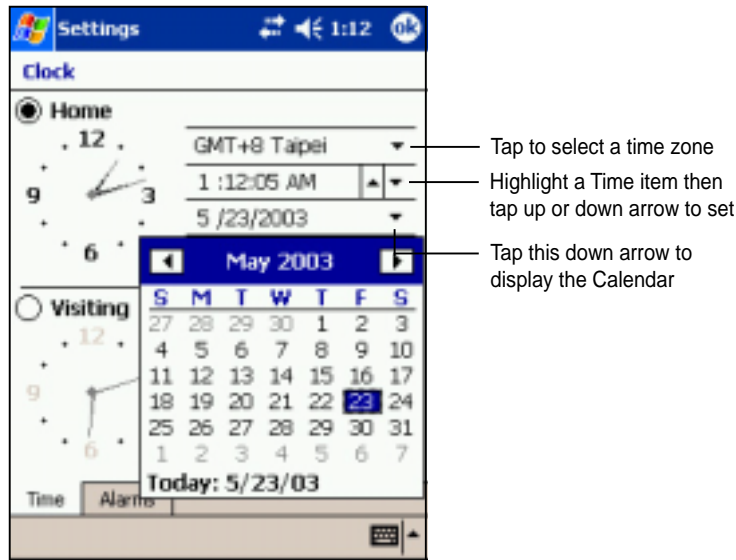
---

**NOTE** Refer to the section “ASUS utilities” later in this chapter for details on the bundled ASUS programs.

---

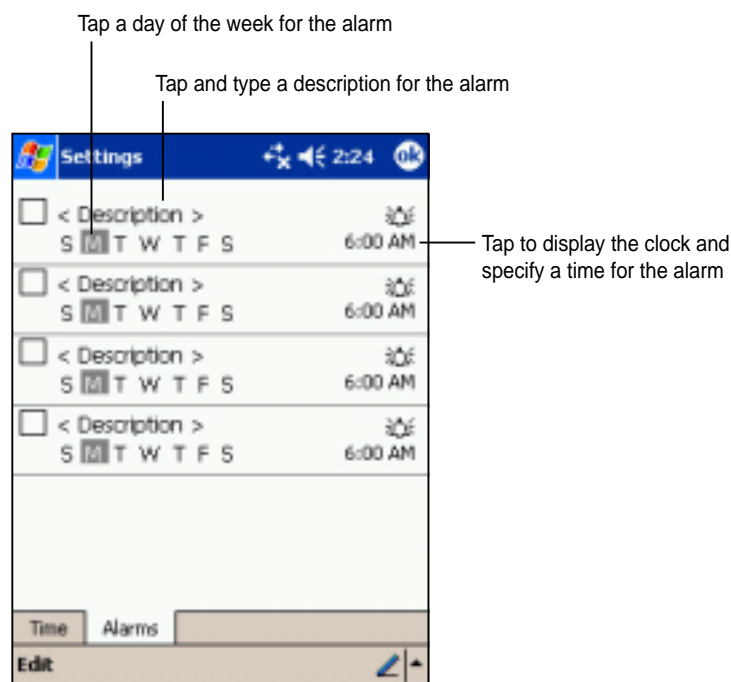
## To change the date and time settings:

1. Tap **Settings**, then the **System**.
2. Tap the **Clock** icon.
3. Make your desired settings.



## To change the alarm settings:

1. Tap **Settings**, then the **System**.
2. Tap the **Clock** icon, then the **Alarm** tab.
3. Make your desired settings.




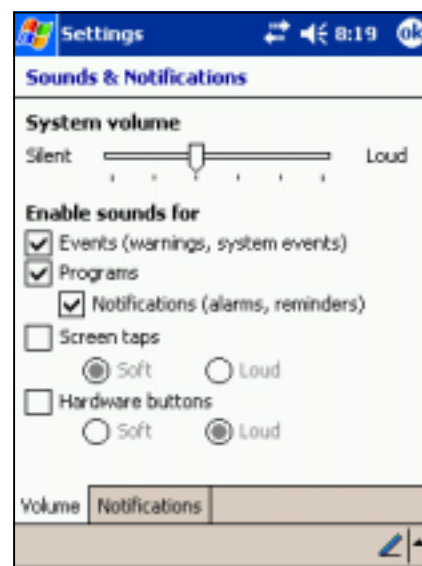
## Selecting sounds and notifications

Your device can remind you of things you have to do in several ways. For example, if you have set up an appointment in Calendar, a task with a due date, or an alarm in Clock, you will be notified in any of the following ways.

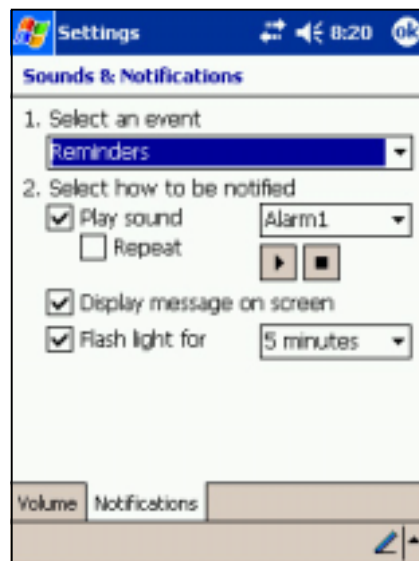
- A message box appears on the screen
- A sound is played (you can select the type of sound)
- A light flashes on the device

### To choose the reminder types and sounds:

1. Tap  icon then tap **Settings**.
2. From the Settings screen, tap the **Sounds and Notifications** icon to display the **Volume** screen.
3. Adjust the items to your desired settings.




4. Tap the **Notifications** tab and set the event notification details.




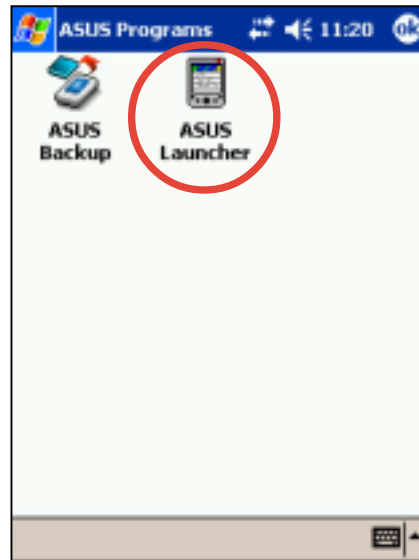
## Using **ASUS Launcher**

This program allows you the convenience of classifying your frequently used programs, and quickly launching them with just a few taps.

### To access **ASUS Launcher**:

1. Tap , then **Programs**.
2. Tap **ASUS Programs**, then **ASUS Launcher**.

**NOTE** To quickly access **ASUS Launcher**, press the  button (leftmost) on your device.

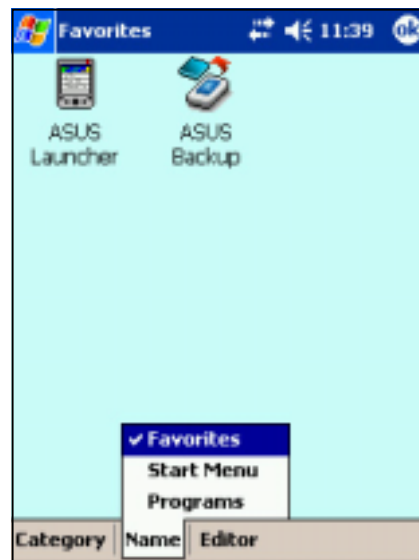


3. From the command bar, tap **Name** to display the names of the existing categories.

The default categories are **Favorites**, **Start Menu**, and **Programs**.

4. Tap a category to display the programs it contains.

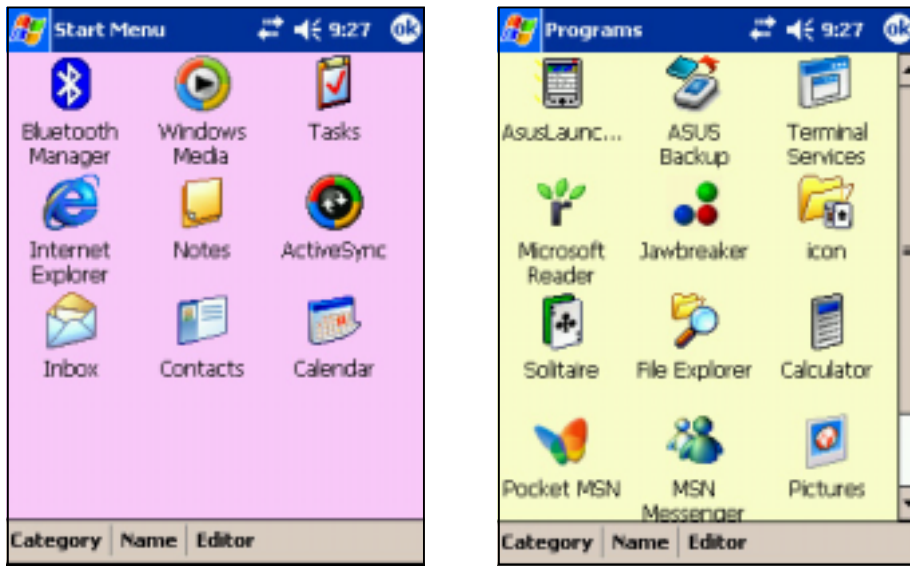
By default, the Favorites category contains the ASUS Launcher and ASUS Backup program icons.



**NOTE** You cannot delete the default categories. However, you may edit the default titles, and add or delete programs contained in these categories.



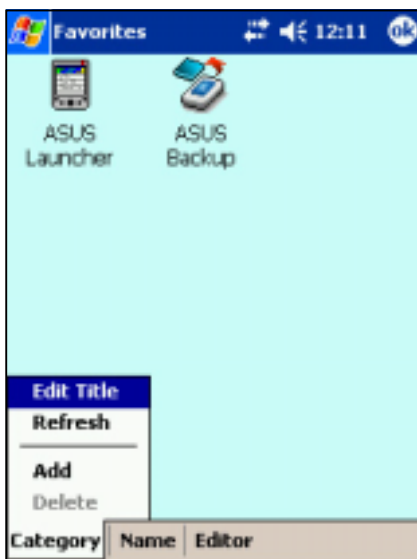
5. Tap **Start Menu** or **Programs** to display the default programs in them.



**NOTE** Whatever category is selected, that category will be launched the next time you tap the AsusLauncher icon.

### To edit the name of a default category:

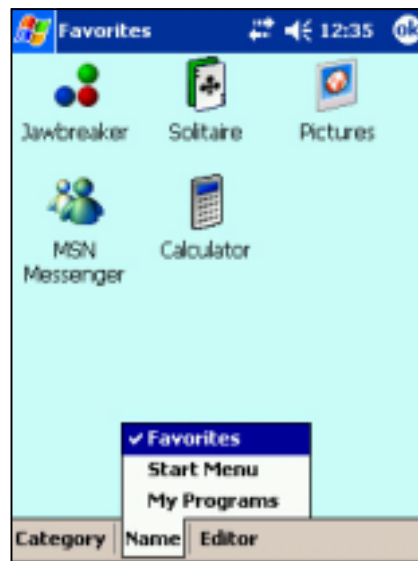
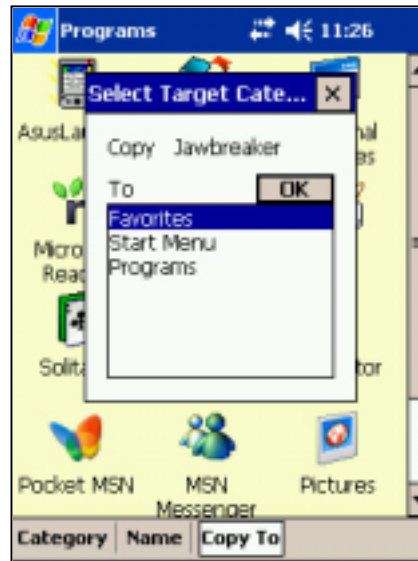
1. Tap **Name**, and select a category that you wish to rename. For example, **Programs**.
2. Tap **Category**, then **Edit Title**.
3. In the **Edit Current Category** screen, revise the name.
4. Tap **OK**.



## To customize an existing category:

1. Tap **Editor**, then **Copy To**.
2. Tap **Name**, then **Programs** (or **Start Menu**).
3. In the **Programs** screen, tap the program icon that you wish to copy. For example, **Jawbreaker**. A pop-up screen appears.
4. Select a target destination for the program icon. For example, **Favorites**.
5. Repeat steps 3 and 4 to copy other programs that you wish to launch often.
6. When done, tap **Copy To** then **Launch** to return to the launch mode.
7. Tap **Name** then **Favorites** to display your customized quick launch programs.
8. Tap **OK** to set **Favorites** as your quick launch category.

The next time you access AsusLaunch, the Favorites category appears.

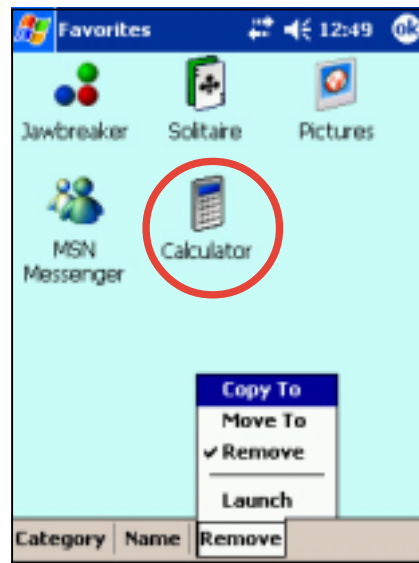


## To remove programs from a category:

1. Tap **Editor**, then **Remove**.
2. Tap **Name**, then any of the existing categories.
3. Tap the program icon that you wish to remove. For example, the **Calculator** icon in the Favorites screen.

The icon disappears from the screen as soon as you tap it.

4. When done, tap **Remove** then **Launch** to return to the launch mode.
5. Tap **OK** to save your changes.



## To add a new category:

1. Tap **Category**, then **Add**. A new category is automatically added.
2. Tap **Name** to see the updated list of categories.
3. If you wish to rename the new category, see page 2-17 for instructions.



## Adding or removing programs

Programs added to your device at the factory are stored in ROM (Read-Only Memory). You cannot remove this software, and you will never accidentally lose ROM contents. ROM programs can be updated using installation programs with a \*.xip extension. All other programs and data files added to your device after factory installation are stored in RAM (Random Access Memory).


You can install any program created for your device, as long as it has enough memory. The most popular place to find software for your device is on the Pocket PC web site (<http://www.microsoft.com/mobile/pocketpc>).


### To add programs using ActiveSync:

---

**NOTE** You need to install the Microsoft ActiveSync on your desktop computer before you can synchronize and/or add programs to your device. Refer to “Chapter 3: Microsoft ActiveSync” for installation instructions.

---

1. Determine your device and processor type so that you know which version of the software to install. Tap , then tap Settings. On the System tab, tap About. In the Version tab, take note of the information in Processor.
2. Download the program to your desktop computer (or insert the CD that contains the program into your desktop computer). You may see a single \*.xip, \*.exe, or \*.zip file, a **Setup.exe** file, or several versions of files for different device types and processors. Be sure to select the program designed for the Pocket PC and your device processor type.
3. Read any installation instructions, Read Me files, or documentation that comes with the program. Many programs provide special installation instructions.
4. Connect your device to your desktop computer.


5. Double-click the \*.exe file.
  - If the file is an installer, the installation wizard begins. Follow the directions on the screen. Once the software is installed on your desktop computer, the installer automatically transfers the software to your device.
  - If the file is not an installer, you will see an error message stating that the program is valid but it is designed for a different type of computer. You need to move this file to your device. If you cannot find any installation instructions for the program in the Read Me file or documentation, use ActiveSync Explore to copy the program file to the Program Files folder on your device. For more information on copying files using ActiveSync, see ActiveSync Help.
6. When the installation is complete, tap , **Programs**, and the program icon to switch to it.

## To add a program directly from the Internet:





---

**NOTE** You need to be connected to the Internet through an optional modem card or network card before you can add programs directly from the Internet.


---

1. Determine your device and processor type so that you know which version of the software to install. Tap , then tap **Settings**. On the System tab, tap **About**. In the Version tab, take note of the information in Processor.
2. Download the program to your device straight from the Internet using the **Pocket Internet Explorer**. You may see a single \*.xip, \*.exe, or \*.zip file, a **Setup.exe** file, or several versions of files for different device types and processors. Be sure to select the program designed for the Pocket PC and your device processor type.
3. Read any installation instructions, Read Me files, or documentation that comes with the program. Many programs provide special installation instructions.
4. Tap the file, such as a \*.xip or \*.exe file. The installation wizard begins. Follow the directions on the screen.

## To add a program to the Start menu:

1. Tap , tap **Settings**, tap **Menus**, tap the **Start Menu** tab, and tap the check box for the program. If you do not see the program on the list, you can either use File Explorer on the device to move the program to the Start Menu folder, or use ActiveSync on the desktop computer to create a shortcut to the program and place the shortcut in the Start Menu folder.
2. If you are using the File Explorer on the device:
  - a. Tap , tap **Programs**, tap **File Explorer**, and locate the program (tap the folder list, labeled My Documents by default, then tap My Device to see a list of all the folders on the device).
  - b. Tap and hold the program, then tap **Cut** on the pop-up menu. Open the Start Menu folder located in the Windows folder, tap and hold a blank area of the window, then tap **Paste** in the pop-up menu.
  - c. The program now appears on the  menu. For more information on using the File Explorer, see the section “Finding and organizing information” earlier in this chapter.
3. If you are using ActiveSync on the desktop computer:
  - a. Use the Explorer in ActiveSync to explore your device files and locate the program. Right-click the program, then click **Create Shortcut**.
  - b. Move the shortcut to the Start Menu folder in the Windows folder. The shortcut now appears on the  menu. For more information, see ActiveSync Help.

## To remove a program from the Start menu:

1. Tap , then tap **Settings**. On the System tab, tap **Remove Programs**.
2. If the program does not appear in the list of installed programs, use **File Explorer** on your device to locate the program, tap and hold the program, then tap **Delete** on the pop-up menu.

# ASUS utilities

Besides the Microsoft program that allows you to back up data, your device also includes proprietary ASUS utilities. The ASUS utilities allow you to backup or restore data, and adjust settings to customize your device and maximize its use.


## ASUS SmartKeeper

The ASUS SmartKeeper is an automatic backup feature that prompts you to backup the current system status in a CF memory card whenever the remaining battery power reaches a certain level. With the automatic option, the backup process is done whether the device is ON or OFF as long as a CF memory card is present in the slot.

### Requirements for automatic backup

- SmartKeeper is enabled
- a CF memory card in the card slot (64MB free space recommended)
- the remaining battery power in the device reaches a low level

### To enable automatic backup:

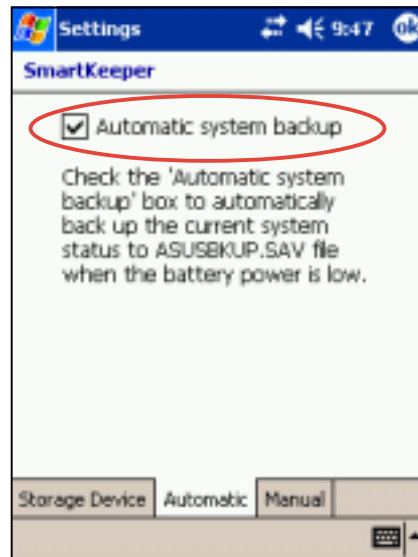
1. Tap , then tap **Settings**.
2. Tap the **System** tab on the bottom of the Settings screen.
3. Tap the **SmartKeeper** icon then the **Automatic** tab.



4. In the **Automatic** screen, check the **Automatic system backup** box to enable automatic backup. This box is checked by default.

When SmartKeeper is set to **Automatic**, make sure that a CF memory card (64MB free space recommended) is present in the CF card slot.

5. Tap **OK**.



---

**NOTE** To verify if the CF memory card is usable for system backup, perform a Manual backup first. See the section “To use manual backup” on page 2-27.

---

## How the SmartKeeper automatic backup works

SmartKeeper is capable of performing the automatic backup process whether your device is in use (ON) or in suspension (OFF).

### When the device is ON

If a low battery status occurs while you are using the device, this message appears, “**Battery low! Back up the current system status?**”

---

*Backing up the “**current system status**” means that the entire system and all the data in the system main memory are saved as **is** to the ASUSBKUP.SAV file. For example, you are editing an Excel file when a battery low status occurs and you confirmed to back up. When you restore the system status from the ASUSBKUP.SAV file, you will see exactly the same screen, settings, and system configuration as earlier backed up.*

---



## To back up the current system status:

1. When prompted, tap the **Yes** button on the screen message window to start the backup process.
  - a. If you set **Flash Disk** as your storage device, SmartKeeper saves your current system status to the file **ASUSBKUP.SAV** in the Flash Disk. This is a 32MB storage space in the device Flash ROM.

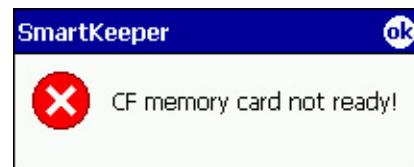
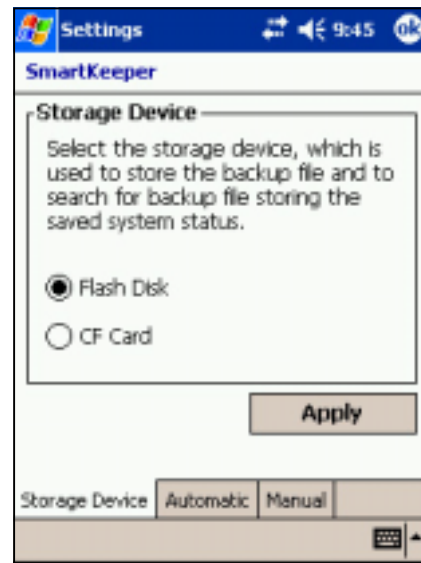
---

**NOTE** Flash Disk is the default setting.

---

- b. If you set **CF Card** as storage device, the backup file is saved in the CF card. Make sure that a CF memory card is present in the slot. If you tap **Yes** without the CF memory card, an error message appears.

Tap **No** if you do not wish to back up the system status at this time.
2. A confirmation message appears when the backup process is complete.



## When the device is OFF

When a low battery status occurs while the device is in standby or OFF, SmartKeeper **wakes up the system** to back up the system status.

- If you selected **Flash Disk** as your storage device, SmartKeeper automatically backs up the system status to **ASUSBKUP.SAV** file in the Flash Disk.
- If you selected **CF Card** as your storage device:
  1. SmartKeeper checks if a CF memory card is ready in the slot.
  2. If found, SmartKeeper backs up the current system status to **ASUSBKUP.SAV** file in the CF memory card. When the backup process is complete, the system automatically goes back to sleep (OFF).

If a CF memory card is not ready in the slot, the device goes back to sleep without performing the backup process.

When you turn on the device, either one of the following messages is flashed on the screen.

The system detected a battery power low status. The system status was automatically backed up to ASUSBKUP.SAV file in the CF memory card.

If automatic backup is successful

The system detected a battery power low status and tried to back up the system status at 2003/04/08, 10:21:27 AM. Backup failed! CF memory card not ready.

If automatic backup failed because a CF memory card is not ready in the slot

The system detected a battery power low status and tried to back up the system status at 2003/04/08, 10:21:27 AM. Backup failed! Cannot access CF memory card.

If automatic backup failed because the CF memory card in the slot may be defective and not accessible


The system detected a battery power low status and tried to back up the system status at 2003/04/08, 10:21:27 AM. Backup failed! Insufficient space in the CF memory card.

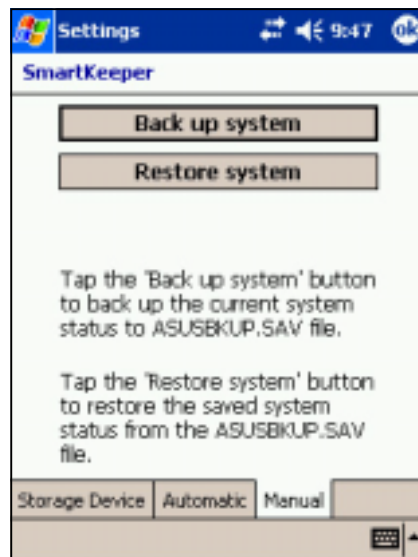
If automatic backup failed because the available space in the CF memory card is not enough to back up the current system status

The system detected a battery power low status and tried to back up the system status at 2003/04/08, 10:21:27 AM. Backup failed! System error.

If automatic backup failed because a system error occurred.

## To use manual backup:


1. Tap , then tap **Settings**.
2. Tap the **System** tab on the bottom of the Settings screen.
3. Tap the **SmartKeeper** icon, then the **Manual** tab.
4. Tap the **Back up system** button to back up the current system status to ASUSBKUP.SAV file in the CF memory card.



5. A message appears to confirm that the backup process is complete.



## To restore the system status:

1. Tap , then tap **Settings**.
2. Tap the **System** tab on the bottom of the Settings screen.
3. Tap the **SmartKeeper** icon, then the **Manual** tab.
4. Tap the **Restore system** button to restore the saved system status from the ASUSBKUP.SAV file in the CF memory card.

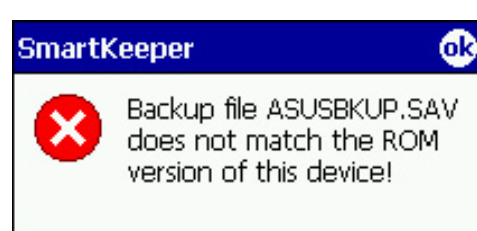
## SmartKeeper error messages

When backing up or restoring the system status, you may receive any one of the following error messages. The messages tell you the reason why the error occurred.

### Back up



### Restore



## ASUS Backup

The ASUS Backup utility lets you back up your system files and/or data contained in the main system memory. Unlike the ASUS SmartKeeper **automatic** backup feature that backs up the entire system status (system and data) into one backup file, this utility allows you to **manually** create separate backup files for your system files and data files. You may even categorize the data files and place into different folders.

### To access the ASUS backup utility:

1. Tap , then tap **Programs**.


2. Tap , then tap .

A message appears asking you to stop other programs before running the backup utility.

3. Tap **OK** and stop all running programs.



### To stop all running programs:

1. Tap , then tap **Settings**.
2. Tap the **System** tab, then tap the **Memory** icon.
3. On the Memory screen, tap the **Running Programs** tab.
4. Tap the **Stop All** button, then tap **OK**.



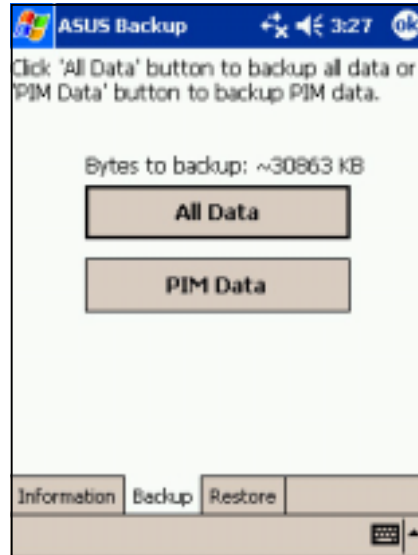
---

**NOTE** See the online help on your device for online instructions to back up or restore data.

---

## To back up all data on your device:

1. Return to the ASUS programs screen and tap the **ASUS Backup** icon.
2. Tap the **Backup** tab on the ASUS Backup screen.
3. Tap **All Data** button to back up all data on your device.

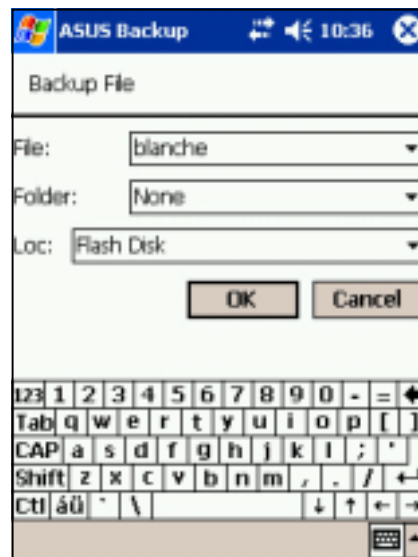


---

**NOTE** You need to insert a CF memory card into the CF slot if you wish to save your backup file into a removable storage device. Otherwise, you can save the backup file into the Flash Disk.

---

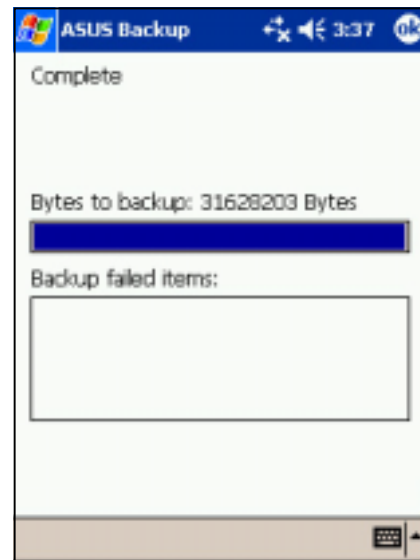
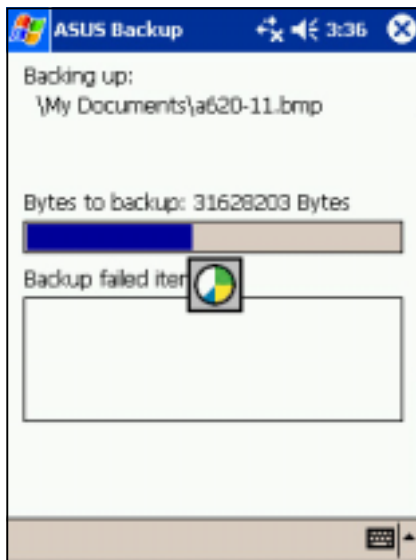
4. In the Backup File screen:
  - specify a **file name** for the backup
  - specify the **folder** in which to store the backup file (optional)
  - select the storage device (**Flash Disk** or **CF card**) where you wish to save your backup file
5. Tap **OK** to start the backup process.



6. The screen shows the status of the backup process. When done, a message appears indicating that the backup is complete, and shows the total size of the backed up files.

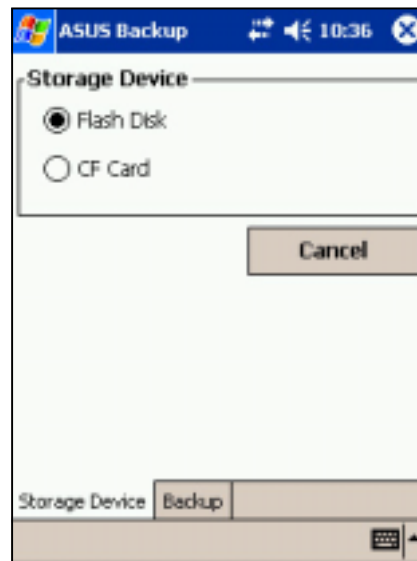
In case the program fails to back up any items, it will show the items on the screen.

7. Tap **OK**.

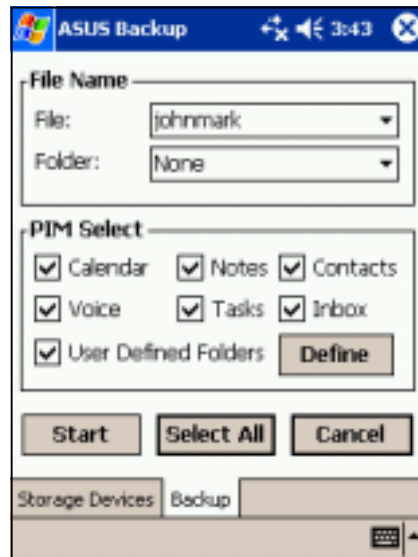


### To back up only PIM data on your device:

1. On the ASUS Backup screen, tap **PIM Data** button to back up only the personal information management (PIM) data on your device.
2. Select the storage device (**Flash Disk** or **CF card**) where you wish to save your backup file.  
Tapping **Cancel** returns you to the previous screen.
3. Tap the **Backup** tab.

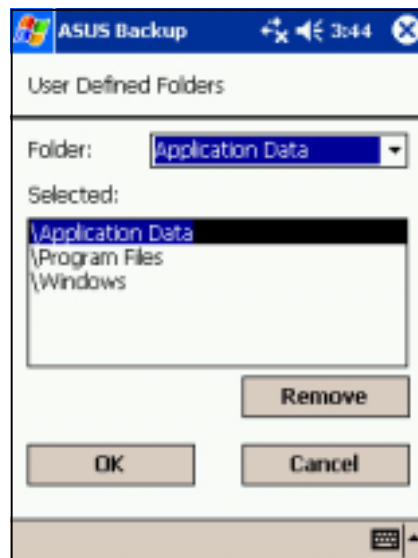


4. Type a name for your backup file and the folder where you wish to place it. You may opt not to specify a folder.
5. Check the boxes opposite the items that you wish to back up, or tap **Select All** to select all listed items.



If you checked the box **User Defined Folders**, tap **Define** to specify the folders that you wish to include in the backup file, then tap **OK**.

6. Tap **Start** to begin the backup process.




7. When the backup process is complete, the screen displays the message "Complete" and a list of all the backed up items.
8. Tap **OK**.





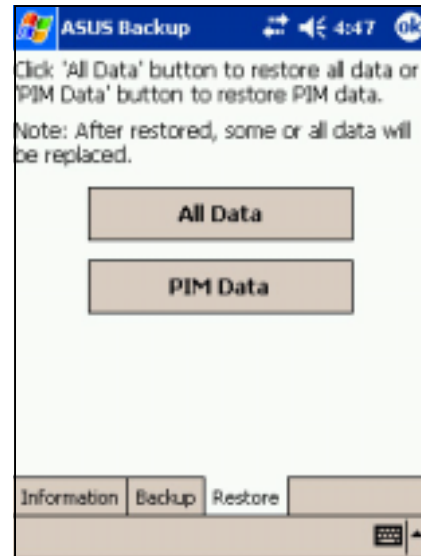
## To restore all data:

1. Tap , then tap **Programs**.

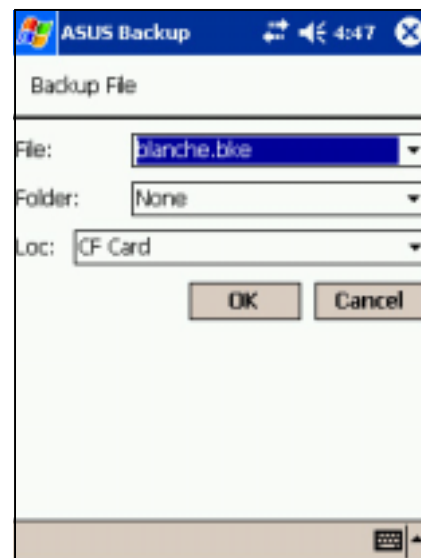
### NOTE

If you saved your backup file into a CF memory card, you need to insert that CF memory card into the CF slot when restoring data. Otherwise, you will receive the message "No storage devices are found!"

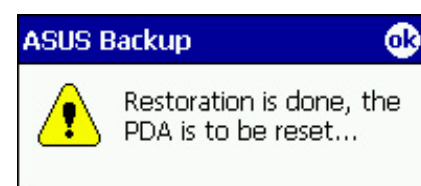
2. On the ASUS Programs screen  
Tap the **ASUS Backup** icon.  
When prompted, stop all running programs. See page 2-29 for instructions.
3. Tap the **Restore** tab on the ASUS Backup screen.
4. Tap **All Data**.



5. In the Backup File screen:
  - select the backup **file name** (tap the arrow to list down other backup files, if any)
  - select the **folder** that contains your backup file (optional)
  - select the storage device (**Flash Disk** or **CF card**) where you stored your backup file
6. Tap **OK** to start the restore process.



7. When the restoration is done, a message appears prompting you to reset the device.
8. Tap **OK** to reset.

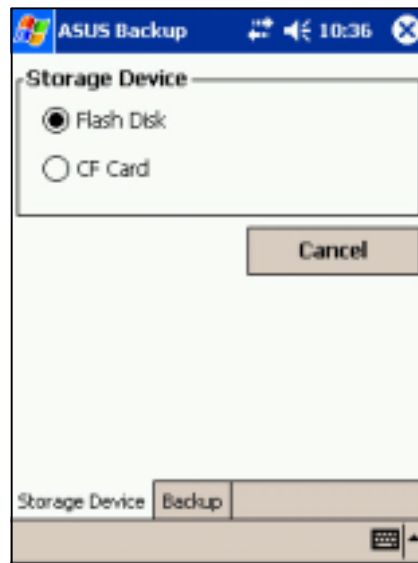


## To restore PIM data:

1. On the ASUS Backup screen, tap **PIM Data**.
2. When prompted, select the storage device (**Flash Disk** or **CF card**) where you stored your backup file.

Tapping **Cancel** returns you to the previous screen.

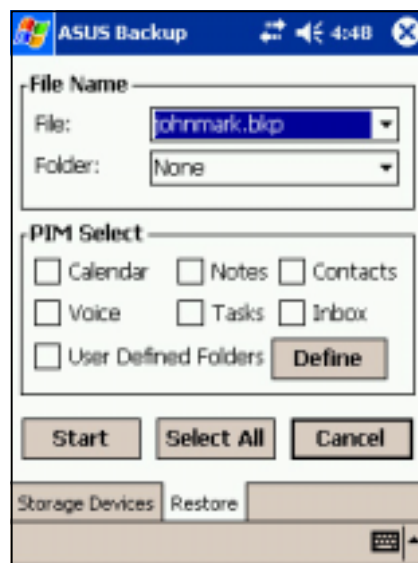
3. Tap the **Restore** tab.



4. Select the backup **file name** (tap the arrow to list down other backup files, if any).
5. Check the boxes opposite the items that you wish to restore, or tap **Select All** to select all listed items.

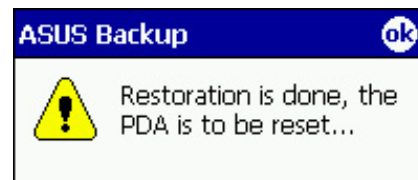
If you checked the box **User Defined Folders**, tap **Define** to specify the folders that you wish to restore, then tap **OK**.

6. Tap **Start** to begin the restore process.




7. When the restoration is done, a message appears prompting you to reset the device.

8. Tap **OK** to reset.



# ASUS Settings

## To access the ASUS settings:

1. Tap , then tap **Settings**.
2. Tap the **System** tab on the bottom of the Settings screen.
3. Tap the **ASUS Settings** icon to display the system information screen. This screen is displayed whenever you tap the **Info** tab.



## To change the Run Mode:

Tap the **Mode** tab to display the running mode of the CPU.

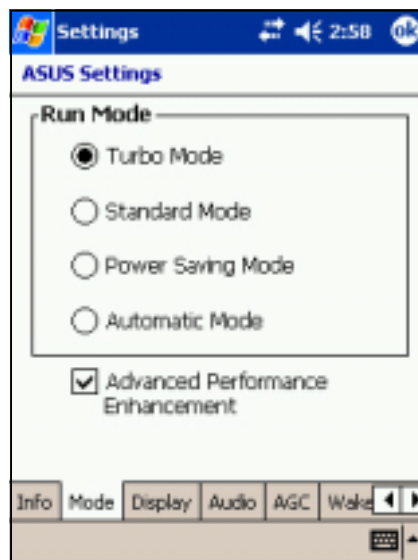
The **Turbo Mode** allows better CPU performance. In this mode, the CPU speed goes up to 400MHz. Set to this mode when playing games or playing video. However, setting to Turbo mode may reduce the battery life.

The **Standard Mode** allows for up to 300MHz CPU speed. Set to this mode when listening to MP3 audio files or for applications that do not require very fast CPU speed.

The **Power Saving Mode** sets the CPU to a fixed speed of 200MHz. Set to this mode when using text based applications such as Word, Excel, etc. This mode has a lower CPU performance but extends the battery life.

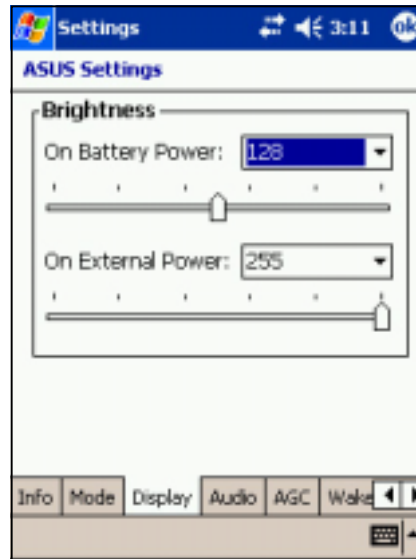
The **Automatic Mode** allows for 200MHz, 300MHz, or 400MHz CPU speed depending on the program that you are running.

Check the **Advanced Performance Enhancement** box to increase system performance.



## To change the Display settings:

1. Tap the **Display** tab.
2. Set the degree of brightness while on battery power by **tapping the down arrow** and selecting a value, or by **dragging the slider** to the left or to the right until you achieve your desired brightness.
3. Follow step 2 to set the degree of brightness when using external power.



---

**NOTE** Using a lower degree of brightness while on battery power substantially reduces battery power consumption.

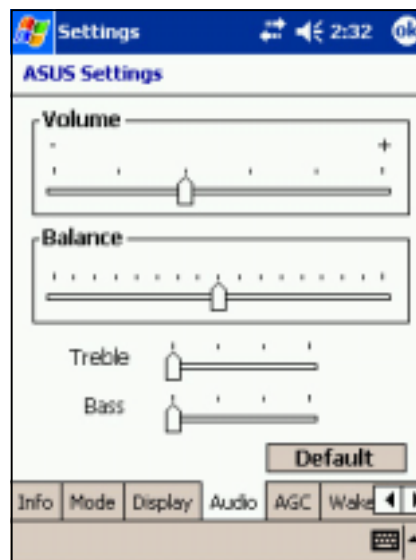
---

## To change the Audio settings:

Tap the **Audio** tab to adjust the volume, balance, treble, and bass settings.

Drag the slider to the left or to the right until you achieve your desired sound output.

Tap the **Default** button to restore the default audio settings.

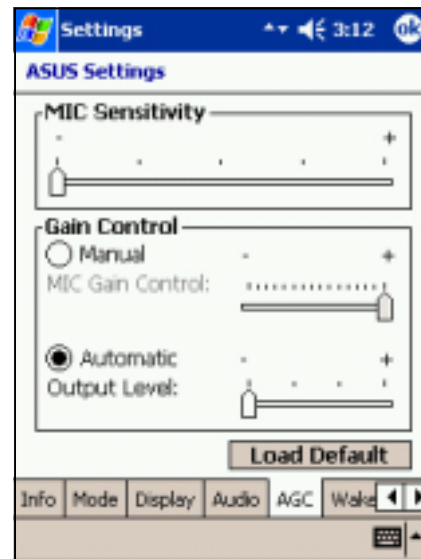


## To change the Microphone settings:

Tap the **AGC** tab to adjust the settings for the microphone sensitivity and automatic gain control (AGC).

The AGC features allows you to adjust the recording and environment noise level.

- The **MIC Sensitivity** controls the sound recording input. Setting the slider toward the “+” sign allows for a louder recording, but the environment noise level may be louder also.
- The **Gain Control** sets the sound recording output.




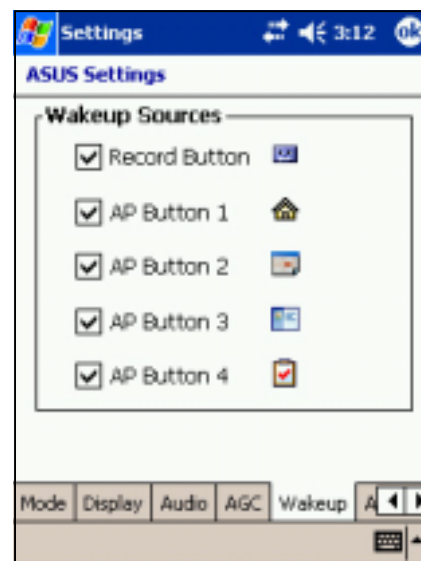
## To change the Wakeup Sources:

Tap the **Wakeup** tab to select the source wakeup buttons.

Pressing any one of the checked buttons wakes up the device.

The program assigned to a specific button appears when you press that button.

Tap , **Settings**, and **Buttons** for the button assignments. You may customize the button assignments.



## To select Autorun Devices:


Tap the **Autorun** tab to select the source devices to execute the autorun program.

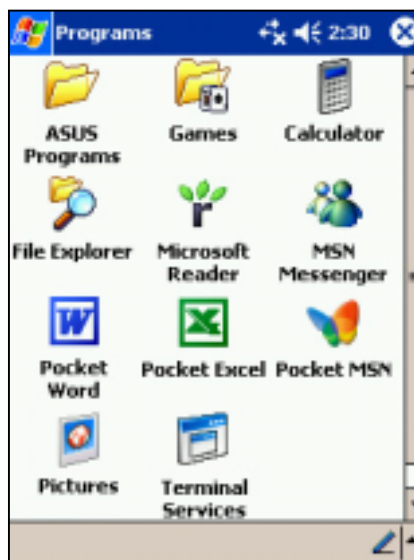


# Bundled programs

Your device includes the most common Windows programs and more.

## To access the bundled programs:

1. Tap  , then tap **Programs**.
2. Tap any of the icons to launch a specific application program.



## ASUS Programs

Tapping the ASUS Programs icon displays the ASUS Backup utility and the ASUS Launcher.

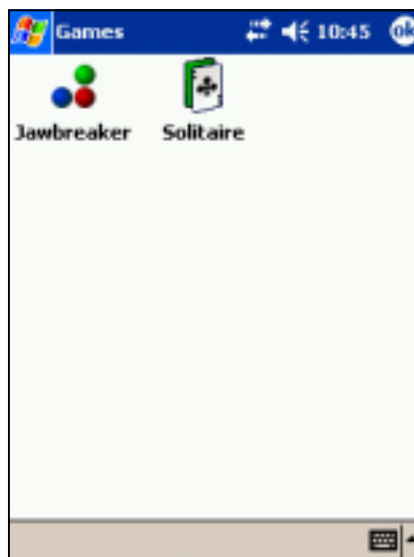
Tap the ASUS Backup icon if you wish to use the utility. See section "ASUS Backup" on page 2-29 for details.

Tap the **ASUS Launcher** icon to quickly display your frequently used programs.



## Games

Tap the Games icon to display the available games.



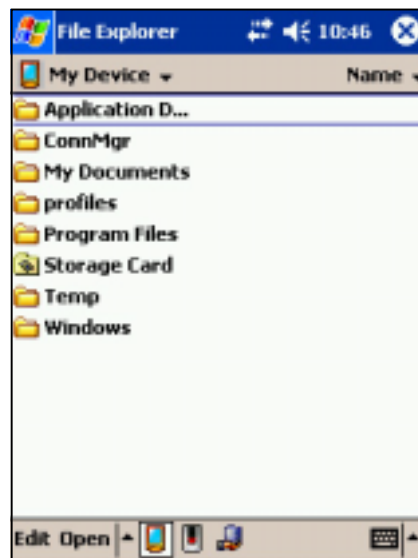
## Calculator

Tap the Calculator icon to use the calculator.



## File Explorer

Tap the File Explorer icon to access your files. See page 2-12.



## Microsoft Reader

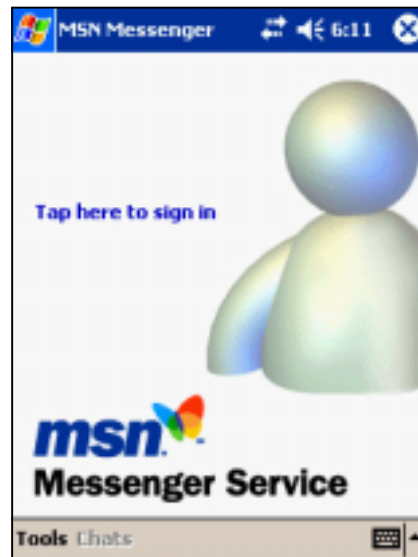
Tap the Microsoft Reader icon to download and read online books. See Chapter 5.





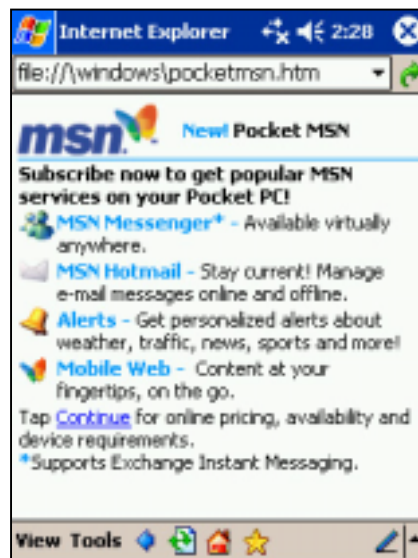
## MSN Messenger

Tap the MSN Messenger icon to use the service. See Chapter 5.



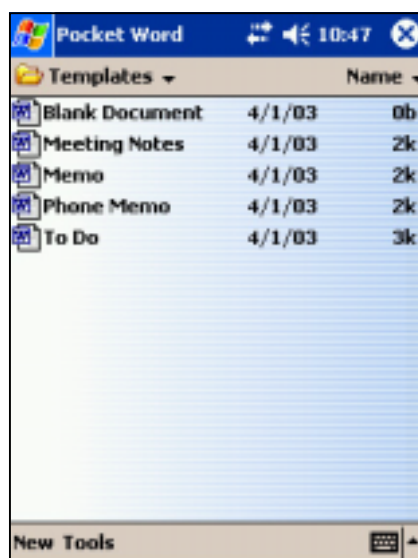
## Pocket MSN

Tap the Pocket MSN icon to get connected to the Internet through the Pocket Internet Explorer. See Chapter 6.



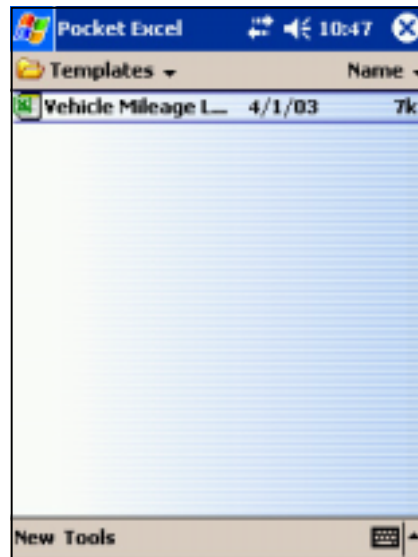
## Pocket Word

Tap the Pocket Word icon to create Pocket Word documents. See Chapter 5.



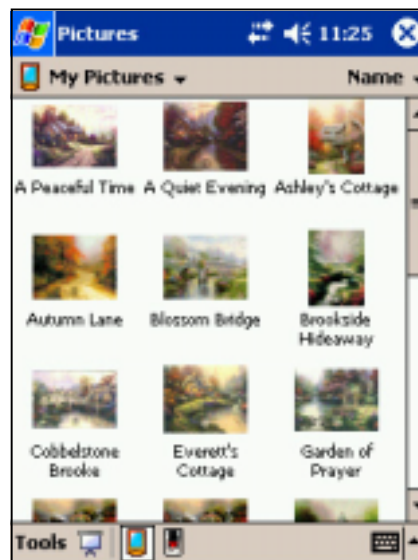
## Pocket Excel

Tap the Pocket Excel icon to create spreadsheet documents. See Chapter 5.



## Pictures

Tap the Pictures icon to view .jpg pictures stored on your device or on a storage card. Refer to the online help on your device for details on using this feature.



## Terminal Services Client

Tap the Terminal Services Client icon to connect to a terminal server. Refer to the online help on your device for more information.

