

E2462

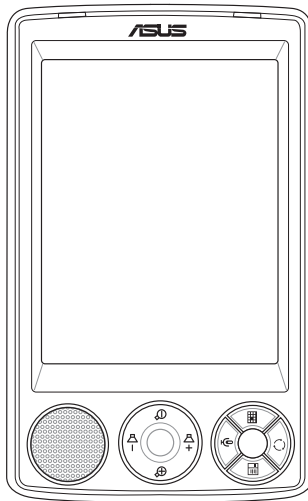
MYPAL **GPS**
Pocket PC
A636N/A632N



A636N/A632N
User Manual



MyPal A636N/A632N



User Manual

E2462

First edition V1.0

April 2006

Copyright © 2006 ASUSTeK COMPUTER INC. All Rights Reserved.

No part of this manual, including the products and software described in it, may be reproduced, transmitted, transcribed, stored in a retrieval system, or translated into any language in any form or by any means, except documentation kept by the purchaser for backup purposes, without the express written permission of ASUSTeK COMPUTER INC. ("ASUS").

Product warranty or service will not be extended if: (1) the product is repaired, modified or altered, unless such repair, modification or alteration is authorized in writing by ASUS; or (2) the serial number of the product is defaced or missing.

ASUS PROVIDES THIS MANUAL "AS IS" WITHOUT WARRANTY OF ANY KIND, EITHER EXPRESS OR IMPLIED, INCLUDING BUT NOT LIMITED TO THE IMPLIED WARRANTIES OR CONDITIONS OF MERCHANTABILITY OR FITNESS FOR A PARTICULAR PURPOSE. IN NO EVENT SHALL ASUS, ITS DIRECTORS, OFFICERS, EMPLOYEES OR AGENTS BE LIABLE FOR ANY INDIRECT, SPECIAL, INCIDENTAL, OR CONSEQUENTIAL DAMAGES (INCLUDING DAMAGES FOR LOSS OF PROFITS, LOSS OF BUSINESS, LOSS OF USE OR DATA, INTERRUPTION OF BUSINESS AND THE LIKE), EVEN IF ASUS HAS BEEN ADVISED OF THE POSSIBILITY OF SUCH DAMAGES ARISING FROM ANY DEFECT OR ERROR IN THIS MANUAL OR PRODUCT.

SPECIFICATIONS AND INFORMATION CONTAINED IN THIS MANUAL ARE FURNISHED FOR INFORMATIONAL USE ONLY, AND ARE SUBJECT TO CHANGE AT ANY TIME WITHOUT NOTICE, AND SHOULD NOT BE CONSTRUED AS A COMMITMENT BY ASUS. ASUS ASSUMES NO RESPONSIBILITY OR LIABILITY FOR ANY ERRORS OR INACCURACIES THAT MAY APPEAR IN THIS MANUAL, INCLUDING THE PRODUCTS AND SOFTWARE DESCRIBED IN IT.

Microsoft, Activesync, Outlook, Pocket Outlook, Windows, and the Windows logo are either registered trademarks or trademarks of Microsoft Corporation in the United States and/or in other countries. Microsoft products are licensed to OEMs by Microsoft Licensing, Inc., a wholly owned subsidiary of Microsoft Corporation.

Table of Contents

| | |
|--|-----------|
| Chapter 1 Getting Started | 1 |
| Introducing MyPal | 1 |
| Installing and removing the battery | 5 |
| Connecting to a power source | 5 |
| Setting up GPS | 6 |
| Additional storage | 7 |
| Activating MyPal | 8 |
| Basic screens on MyPal | 9 |
| Chapter 2 Basics | 11 |
| Viewing system information | 11 |
| Entering information | 11 |
| Finding and organizing information | 18 |
| Using the File Explorer | 18 |
| Customizing your device | 19 |
| Using simple applications | 27 |
| Chapter 3 Synchronize and Enhance | 31 |
| Microsoft® ActiveSync® | 31 |
| Synchronizing your device | 33 |
| Installing other applications | 38 |
| Chapter 4 Microsoft® Pocket Outlook | 39 |
| Calendar | 39 |
| Contacts | 42 |
| Tasks | 45 |
| Notes | 46 |
| Messaging | 48 |
| Chapter 5 Companion Programs | 53 |
| Word Mobile | 53 |
| Excel Mobile | 56 |

| | |
|---|-----------|
| PowerPoint Mobile | 58 |
| Pocket MSN | 60 |
| Windows Media Player for Pocket PC | 64 |
| Chapter 6 Internet Explorer Mobile..... | 65 |
| Using Internet Explorer Mobile | 65 |
| Mobile Favorites folder | 66 |
| Chapter 7 Get Connected | 70 |
| Connecting to the Internet | 70 |
| Connecting to Work | 71 |
| Setting up connections | 71 |
| Ending a connection | 73 |
| Setting up a WAP gateway | 74 |
| Using dialing rules | 74 |
| Using Terminal Services Client | 75 |
| Infrared (IR) connection | 76 |
| Chapter 8 Bluetooth® | 78 |
| Using Bluetooth | 78 |
| Bluetooth settings | 79 |
| Bluetooth Manager | 81 |
| Remote device services..... | 82 |
| Setting up High Quality Audio setup or Hands-free/Headset setup | 88 |
| Setting up ActiveSync via Bluetooth | 88 |
| Chapter 9 Wi-Fi | 89 |
| Using Wi-Fi | 89 |
| The Wi-Fi Manager | 92 |
| Appendix Notices | 95 |
| Federal Communications Commission Statement..... | 95 |
| Canadian Department of Communications Statement | 95 |
| UL Safety Notices | 96 |
| Checklist of Regulatory Statement | 97 |

MyPal A636N/A632N specifications

| | |
|-------------------------|---|
| Processor | The latest Intel® XScale™ 416MHz Processor |
| Operating system | Microsoft® Windows Mobile™ 5.0 (Pocket PC) |
| Memory | 128MB Flash ROM 64MB SDRAM (75MB user accessible) |
| Display | 3.5-inch, brilliant transfective TFT LCD 65,000 Full-color, 16-bit display QVGA, 240x320 resolution Touch Pad |
| Battery | 1300 mAh removable/rechargeable Li-ion |
| Expansion slot | A636N: One slot - SD card slot (SDIO/SD/MMC) A632N: Dual slot - SD card slot (SDIO/SD/MMC) and mini SD |
| Communication | Bluetooth® v2.0 EDR* IR port: SIR 115.2kbps max. USB 1.1 Client WLAN 802.11b/g (A636N only) |
| Audio | 3.5 mm stereo |
| GPS | SiRF Star III / GPS chip with built-in GPS Antenna |
| Size | 122 mm x 73.2 mm x 18.8 (19.45) mm |
| Weight | 186 grams (with battery) |

(Specifications are subject to change without notice.)

* Visit www.asus.com for Bluetooth® v2.0 EDR update information.
To make this feature function, other devices connected must support Bluetooth v2.0 EDR.

IMPORTANT To avoid damaging your Pocket PC and accessories, it is best to operate this unit (including the protection case) within a temperature range of 20-30 °C (68-86 °F) and 50% humidity. Anything that goes beyond or below the ideal temperature range may damage the unit, and may shorten the battery life.

Package contents

Your package includes several accessories for the Pocket PC. After unpacking, check the items against the list below and make sure that they are in good condition. If any item is missing or damaged, contact your dealer or retailer immediately.

Standard items

- ASUS MyPal A636N/A632N Pocket PC
- USB travel sync cable
- AC adapter
- Microsoft Companion CD: includes Microsoft® Outlook® 2002 and Microsoft® ActiveSync® 4.1
- Stylus
- Protection case
- Removable/ rechargeable 1300mAh Li-ion battery
- Manual
- Quick Start Guide
- Car kit (car holder and gooseneck)
- Car charger
- Warranty card

Optional accessories

- Stylus x 3 / package
- 26-pin to DC in adapter
- External antenna
- USB travel sync cable
- AC adapter
- Car kit (car holder and gooseneck)
- Bluetooth keyboard
- Stereo headset with microphone
- Bluetooth headset
- Car charger and converter
- Battery
- Leather protection case

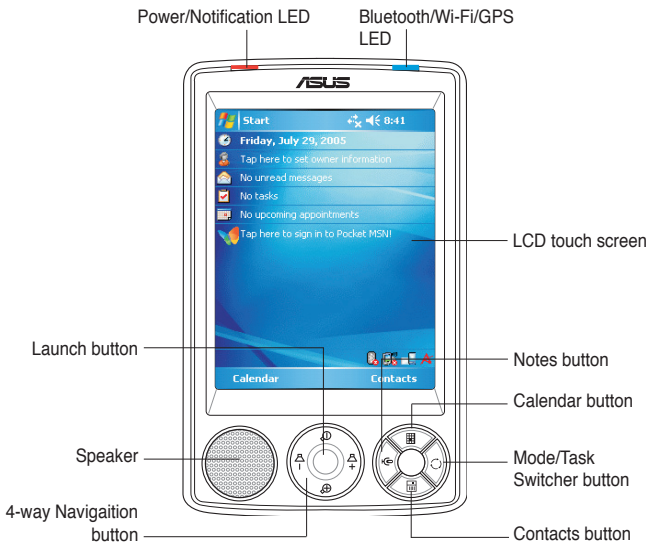
Chapter 1 Getting Started

Introducing MyPal

The ASUS® MyPal A636N/A632N is truly a good companion wherever you go. Powered by a 416MHz Intel® XScale processor, equipped with 64MB SDRAM and 128MB Flash ROM, and bundled with the Microsoft® Windows Mobile® 5.0 plus a host of useful utilities, you have everything you need in your pocket!

MyPal A636N comes with additional Wi-Fi feature that allows you to connect to wireless LAN and Internet. MyPal A636N has a single SD card slot, whereas MyPal A632N comes with dual slots: SD and mini SD slots.

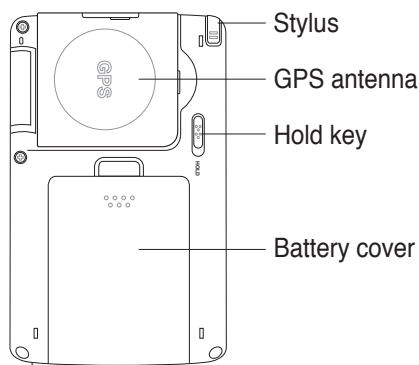
Front features



- **Power LED** - shows a steady red light when the battery is charging; steady green when the battery is fully charged and the device is connected to an AC power source.
- **Bluetooth/GPS/Wi-Fi LED** - lights up blue when the Bluetooth® feature is on; lights up green when GPS is on; lights up red when Wi-Fi is on (MyPal A636N only).
- **LCD touch screen** - allows you to enter, read, send, receive or edit data by tapping on it. The screen lumination is increased or decreased by changing the backlight settings.

- **Speaker** - allows you to hear alarms and other sound output from the device.
- **4-way navigation button** - functions like the four arrow keys on a keyboard. This button allows you to move through the program icons, folders, or files in a menu by scrolling up or down, left or right.
If ASUS® MyPal is bundled with GPS map software, you may use the buttons to zoom in, zoom out and adjust the volume.
- **Launch button** - functions like the enter/return key on a keyboard. Press once to launch a selected program, list folder contents, or open a file.
- **Contacts button** - opens your contacts list at any time.
- **Calendar button** - opens the Calendar program at any time.
- **Mode Switcher button** - allows you to switch between Today, Windows Media Player and Rotate screen. The Mode Switcher button can also function as a Task Switcher, which allows you to switch between currently running programs on your device.
- **Notes button** - opens the Notes program at any time.

Back features



- **Stylus** - used for tapping or writing on the LCD touch screen.
- **GPS antenna** - used as a signal receiver that pinpoints your exact location. This information is retrieved from satellites. Flip open this panel when using the GPS. If signal reception is not strong enough, you can connect an optional external antenna to the socket on the top side of this panel.
- **Hold key** - provides a safety measure to avoid users from accidentally tapping the screen or turning on the device. Move the switch towards

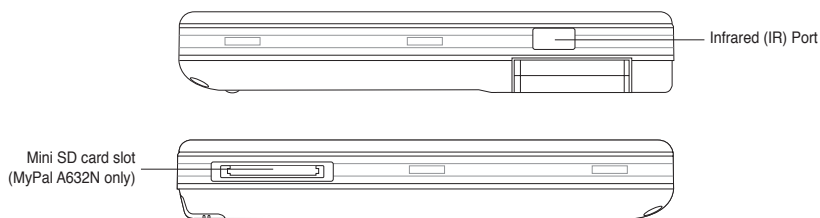
the word Hold to turn off the screen and prevent it from turning back on even when you tap the screen or press a button. Move the switch towards the opposite direction to disable this feature.

- **Battery cover** - provides protection to the battery compartment of the device.

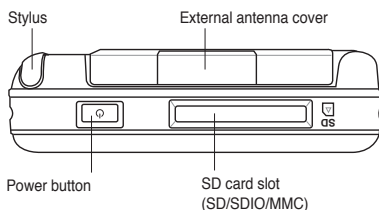
NOTES As a precaution, the Power button is automatically disabled when you remove the battery cover. You can only turn on the power when the battery cover is installed to the unit. The battery cover is removable, and allows you to remove or replace the main battery.

Side features

- **Infrared (IR) port** - allows you to copy or send data to another device with an IR port. For a successful exchange of data, the IR port of both devices must be properly aligned and facing each other within the IR communication range.
- **Mini SD slot (A632N only)** - accommodates a mini SD memory card.



Top features

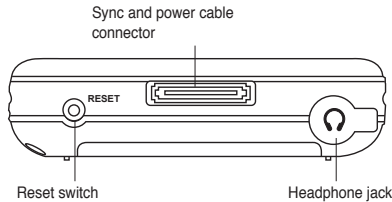


- **External antenna cover** - covers the external antenna port. If the GPS signal is weak, connect an optional external antenna to the port.
- **SD card slot** - accommodates an SD memory card, MMC memory card or an SDIO interface card (e.g. 802.11b/g, modem, etc.)





- **Power button** - turns the device power on or off if you press the button quickly.

NOTE To shutdown the device, press the **Power** button for about four seconds then tap **Yes**. All open files will be unsaved.

Bottom features



- **Headphone port** - connects to a headphone.
- **Sync and power cable connector** - connect the 26-pin USB sync cable directly to this connector to synchronize your device with your computer.
This also charges the battery at the same time.
- **Reset switch** - allows you to perform a *soft reset* in case the device malfunctions, or when an application hangs. Press the tip of the stylus on this switch to reset the system.

NOTE To perform a *clean reset*, press and hold the Speak(-) button  while simultaneously pressing the Mode Switcher button  and pressing the stylus on the reset switch. Then a warning message appears. Press  to do clean reset, or press  to leave the operation screen. Performing a soft reset will not change the data in the device; while performing a clean reset will delete all data.

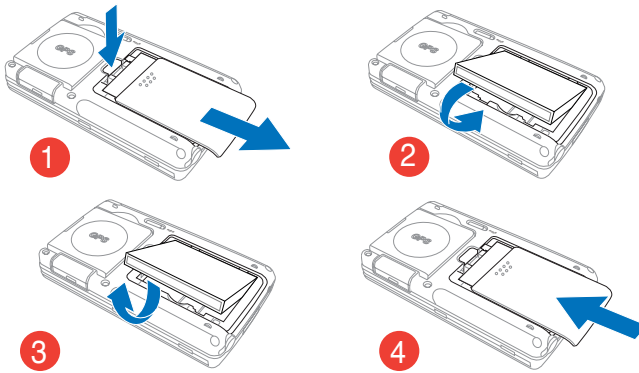


The GPS car kit

The GPS car kit includes:

- **Car holder** - holds the Pocket PC.
- **Gooseneck** - securely attaches the Pocket PC to the car's windshield.

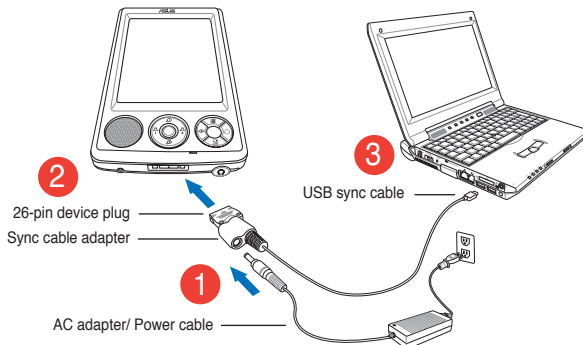
Installing and removing the battery



NOTE Opening the battery cover automatically turns off the power. There is a mechanism at the upper left side of the battery compartment that switches the power off automatically when you slide out the battery cover. This is a safety measure for protecting the power circuitry, so please make sure not to lose the battery cover.

Connecting to a power source

IMPORTANT You need to charge the battery before using the device for the first time.

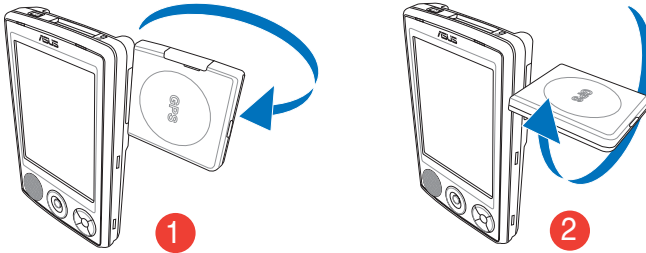


NOTE As soon as the power cable is connected to a power source, the battery will start charging and the power LED will show a steady red light. See “Changing the battery power settings” in Chapter 2 on how to display the battery power status.

Setting up GPS

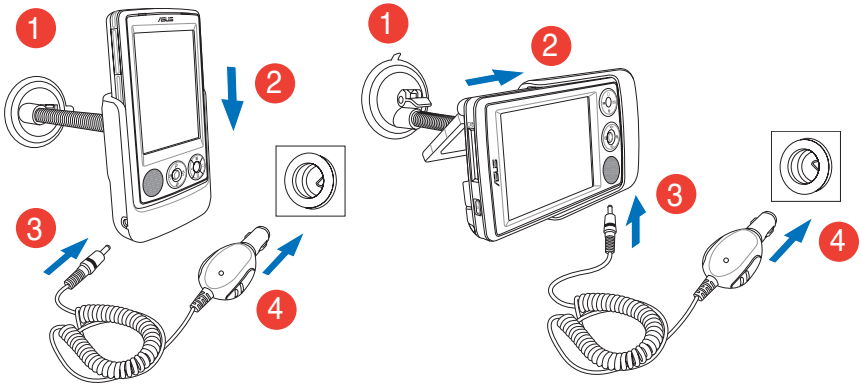
To receive GPS signal:

Flip open the GPS antenna panel from the back of the device. You may rotate the panel as illustrated below.



NOTE For best signal reception, the GPS antenna panel should be oriented parallel to the ground. If the GPS signal reception is weak, purchase and use an optional external antenna. Flip open the antenna cover that is above the panel, then plug in the external antenna to the antenna port.

To use the GPS car kit:



Vertical orientation

Horizontal orientation

NOTE Gently bend the gooseneck when adjusting the orientation. Do not forcibly bend the gooseneck. The device must be carefully placed into the holder to avoid damaging the 26-pin device connector and causing the device to breakdown.

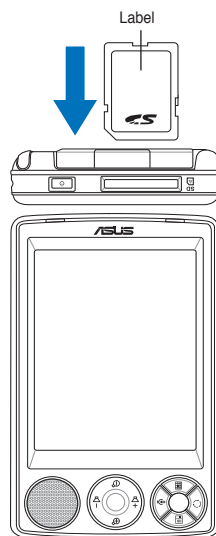
Additional storage

MyPal A636N comes with the standard SD card slot while MyPal A632N has an additional mini SD card slot. The SD card slot can be inserted with SD or MMC memory cards. It also supports SDIO cards of various functionalities including 802.11b/g, modem, etc.

Installing and removing SD/MMC/SDIO card

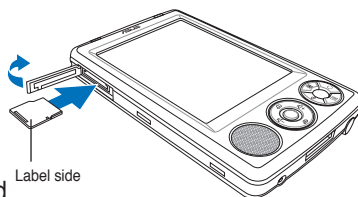
1. With the label side (usually the side with the card manufacturer's name) face up, and the barcode/serial number side face down, insert the card into the SD card slot located on top of the device.
2. Push the card all the way into the slot until it fits completely. If properly installed, the SD or MMC card edge aligns with the top edge of the device. SDIO cards usually have an extended part that protrudes over the slot edge.
3. To remove, press the card slightly until it ejects out. You may then safely remove the card.

NOTE An SD/MMC/SDIO/mini SD card fits only in one orientation, and slides smoothly into the slot if inserted correctly. **DO NOT** force the card into the slot!



Installing and removing mini SD card (for A632N only)

1. Flip open the mini SD card slot cover.
2. With the label side (usually the side with the card manufacturer's name) face up, and the barcode/serial number side face down, insert the card into the mini SD card slot located on the left side of the device.
3. Push the card all the way into the slot until it fits completely.
4. To remove, press the card slightly until it ejects out. You may then safely remove the card.

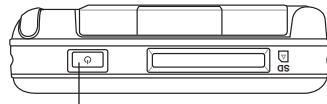


Activating MyPal

You need to properly calibrate and activate your device before using it. This process ensures accurate positioning when entering text and selecting menus.

Calibrating and activating your device

1. Press the power button.



Power button

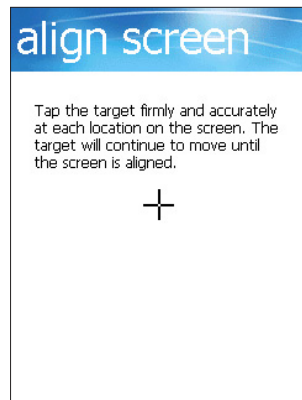
2. The Welcome screen appears when you turn on the device for the first time, or after performing a clean reset. Tap anywhere on the screen to continue.

NOTE To perform a clean reset, refer to the description on page 4.



3. Tap the center of the cross to perform the align screen process. You may have to do this step a few times to properly calibrate.

NOTE To launch the Align Screen function at any time, tap  > **Settings** > **System** tab > **Screen** icon > **Align Screen** button.




4. Follow the succeeding on-screen instructions.
5. Tap anywhere on the Complete screen when you are done with the alignment and settings. You are now ready to use your device.

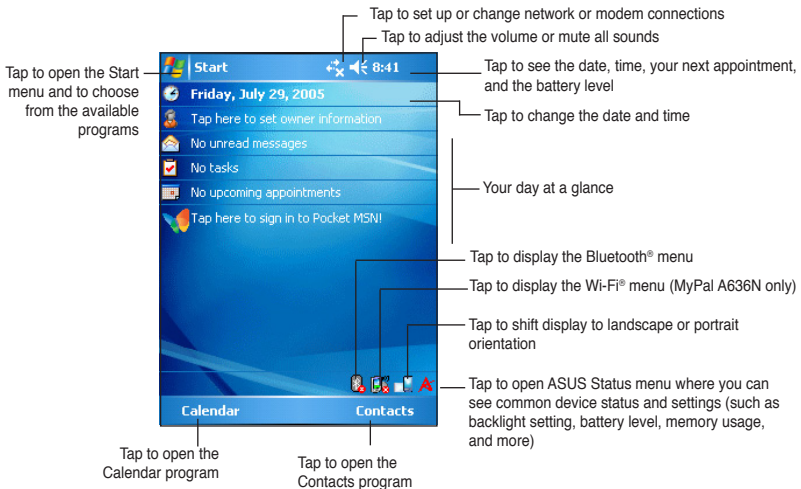
Basic screens on MyPal

Today screen

Normally, the Today screen appears when you turn on your device for the first time each day.

NOTE When the device is already on and the screen displays another program, you may return to the Today screen any time by tapping  > **Today**.


As shown in the sample below, the Today screen lets you see at a glance the summary of the important information for the day.

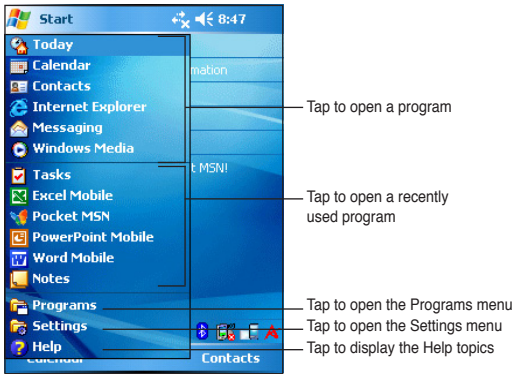


From the Today screen, tap any of the listed items with the stylus to display the details. See “Chapter 2: Basics” on how to modify the current tasks or activities, or to add new items or information.

Start menu

From the Start menu, you can select programs, settings, and help topics.

To display the Start menu, tap the  icon from the top of the screen.



Menu bar

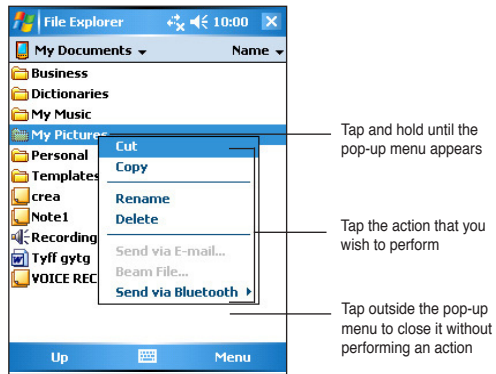
At the bottom of the screen of a program is the Menu bar. You can use the menus and buttons on the Menu bar to perform commands and actions.

The menus and buttons vary depending on the programs you are using.

Pop-up menus

With the pop-up menus, you can easily choose an action for an item.

For example, you can use the pop-up menu in **File Explorer** to delete, copy, or beam an item.



To access a pop-up menu, tap and hold the stylus on the item that you wish to perform action on. When the menu appears, lift the stylus, and tap the action that you want to execute. To close the pop-up menu without performing an action, tap anywhere outside the menu.

NOTE The pop-up menus are also available in most other programs on your device. However, the pop-up menu items vary depending on the program or application.


Chapter 2 Basics

Viewing system information

Your device allows you to easily display the built-in specifications.

NOTE You cannot change the information you see in the system information screens.

To display the system information:

1. Tap  > **Settings** > **System** tab > **System Information** icon
2. To display the device specifications, tap **Device Info** tab. This will display various information such as the device ID, system memory, and wireless capabilities.
3. Tap the **Version** tab to view other information about the device.

Entering information

You can enter information in your device in any of the following ways:

- Use the input panel to enter text using either the soft keyboard, the Letter Recognizer, the Block Recognizer, or the Transcriber
- Write directly on the screen with the stylus
- Draw pictures on the screen
- Speak into the device microphone to record a message
- Use the Microsoft® ActiveSync® to synchronize or copy information from your desktop computer to your device


Entering text using the Input Panel

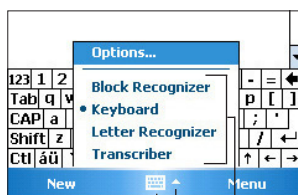
Use the Input Panel to enter information in any program on your device. You can either type using the **soft keyboard** or write using the **Letter Recognizer**, **Block Recognizer**, or **Transcriber**. In either case, the characters appear as typed text on the screen.

To show or hide the input panel, tap . To see input options, tap .

NOTE  appears beside  only when the input panel is not hidden.

To type with the soft keyboard:

1. Tap  > **Keyboard**.
2. Tap the keys on the on-screen keyboard with the stylus to enter information.




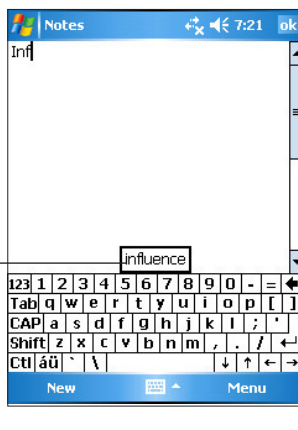
Tap to show or hide the input panel
Tap to display the input method options
Select an input method

Word completion feature

When you use the Input Panel and the soft keyboard, your device anticipates the word you are typing and displays it above the Input Panel. When you tap the displayed word, it is inserted into your text at the insertion point. The more you use your device, the more words it learns to anticipate.

To change options on the word completion feature:


1. Tap  > **Settings** > **Personal** tab > **Input** > **Word Completion** tab.
2. Make your desired changes then tap **ok**.

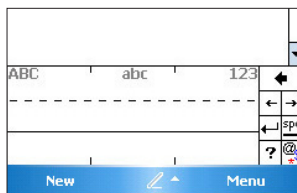


Tap here if this is the word you wish to use

To use Letter Recognizer:


With the Letter Recognizer, you can write letters on the screen with the stylus as you would on paper.


1. Tap  > **Letter Recognizer**.
2. Write a letter within the writing area.
When you write a letter, it is converted to a typed text that appears on the screen. For instructions and a demonstration on using the Letter Recognizer, tap **?** next to the writing area.

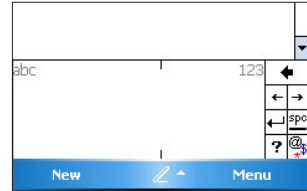


To use Block Recognizer:

With the Block Recognizer, you can input character strokes that are similar to those used on other devices.



1. Tap  > **Block Recognizer**.
2. Write a letter within the writing area.

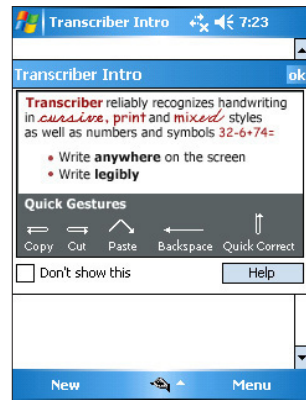
When you write a letter, it is converted to a typed text that appears on the screen. For instructions and a demonstration on using the Block Recognizer, tap  next to the writing area.



To use Transcriber:

With Transcriber, you can use the stylus to write anywhere on the screen as you would on paper. Unlike Letter Recognizer and Block Recognizer, you can write a sentence or additional information. Pause after writing and let Transcriber convert the written characters to typed characters.

1. Tap  > **Transcriber**.
 2. Write anywhere on the screen.
- For instructions and demonstration on using Transcriber, with Transcriber open, tap  at the lower right corner of the screen.




To edit typed text:

1. Select the text that you wish to edit using either one of the following:
 - drag the stylus over the text
 - tap twice to select a word
 - tap three times to select a paragraph
2. Tap **Menu** on the Menu bar and select an action, or use one of the tools in the Input Panel to enter a new text.

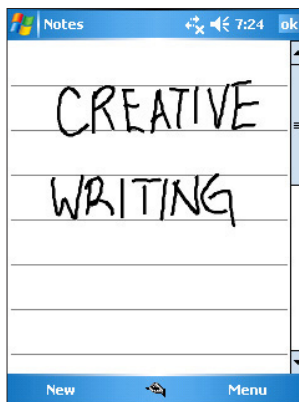
Writing on the screen

In any program that accepts writing, such as the Notes program, and in the Notes tab in Calendar, Contacts, and Tasks, you can use the stylus to write directly on the screen. Write the way you do on paper. You can edit and format what you have written and convert the writing to text at a later time.

To write on the screen:

1. Tap  > **Programs** > **Notes** > **New**
2. The screen displays a blank space with lines to help you write.
3. Write your text.

NOTE Some programs that accept writing may not have the Pen button. See the documentation for that program to find out how to switch to writing mode.



To edit your writing:

1. Tap and hold the stylus next to the text that you wish to select until the insertion point appears.
2. In order to select a text, tap **Menu** > **Draw**. Make sure **Draw** has no check mark beside it.
3. Drag the stylus across the text you want to select.
If you accidentally write on the screen, tap **Menu** > **Undo Ink** and try again.
4. Tap **Menu** on the Menu bar then select an action, or use one of the tools in the Input Panel to enter a new text.

To convert writing to text:

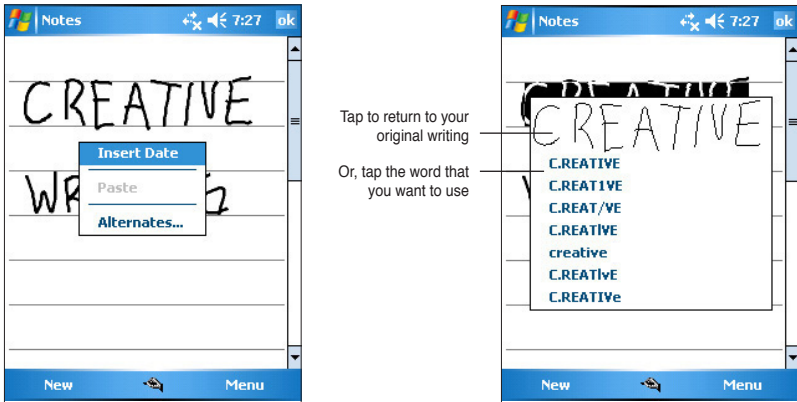
- Tap **Menu** > **Tools** > **Recognize**.

To select a zoom level:

- Tap **Menu** > **Zoom**. From the list, tap a zoom percentage.

If the conversion is incorrect, you can select different words from a list of alternates or return to the original writing.

1. Tap and hold the incorrect word.
2. When the pop-up menu appears, tap **Alternates** to display a list of alternate words for the selection.
3. Tap the word that you want to use, or tap the writing at the top of the menu to return to the original writing.



Tips for getting good writing recognition

- Write neatly.
- Write on the line and draw descenders below the line. Write the cross of the “t” and apostrophes below the top line so that they are not confused with the word above. Write periods and commas above the line.
- For better recognition, try increasing the zoom level to 300% using the Tools menu.
- Write the letters of a word closely and leave big gaps between words so that the device can easily tell where the words begin and end.
- Hyphenated words, foreign words that use special characters such as accents, and some punctuation cannot be converted.
- If you add writing to a word or change it after the word has been recognized, the writing that you added will be included when you try to recognize the writing again.

Drawing on the screen

You can draw on the screen in the same way that you write on the screen. The difference between writing and drawing on the screen is how you select items and how they can be edited. For example, selected drawings can be resized, while writing cannot.

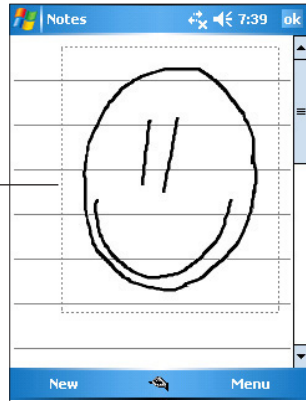
To create a drawing:

1. Use the stylus to make a stroke that extends over three lines on the screen. A drawing box appears around the stroke.

NOTE If the drawing does not cross over three lines, the drawing box does not appear.

2. Continue drawing. If your subsequent strokes extend outside the box, you will notice that the drawing box expands to enclose all the strokes.

The drawing box indicates the boundaries of the drawing



NOTE To easily work on or view your drawing, change the zoom level by tapping **Menu > Zoom** and selecting your desired zoom.




To edit your drawing:

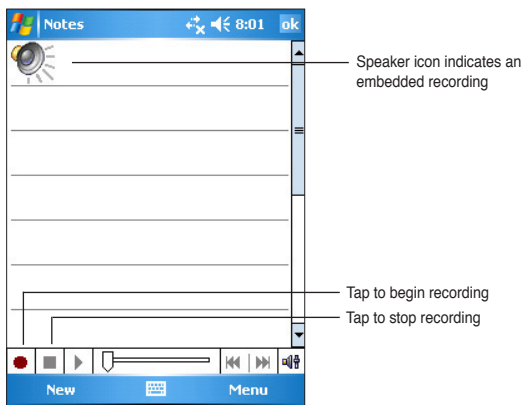
1. Tap and hold the stylus on the drawing until the selection handle appears. To select multiple drawings, drag to select the drawings you want.
2. Tap and hold the selected drawing, then tap an editing command on the pop-up menu or tap a command on the **Menu**.
3. Resize the drawing by dragging a selection handle to your desired size.

Recording a message

In any program where you can write or draw on the screen, you can also quickly capture thoughts, reminders, and phone numbers by recording a message. In Calendar, Tasks, and Contacts, you can include a recording in the Notes tab. In the Notes program, you can either create a standalone recording or include a recording in a written note. If you want to include the recording in a note, open the note first. In the Inbox program, you can add a recording to an e-mail message.

To create a recording:

1. Tap  > **Programs** > **Notes** > **Menu** > **View Recording Toolbar**.
2. Hold your device with the microphone near your mouth or other source of sound.
3. Tap  (red button) to begin recording. To stop recording, tap . You will hear two beeps when you stop recording.
4. The new recording appears in the Notes list, or as an embedded icon. To play the recording, tap it from the list, or if embedded in a note, tap the **Speaker** icon.



To change the recording format:

1. In the note list, tap **Menu > Options > Global Input Options link > Options** tab.
2. Select your desired recording format from the **Voice recording format** pull-down menu then tap **ok** when done.


NOTE Compared to other settings, the **Pulse Code Modulation (PCM)** provides slightly better sound quality but takes up 50 times more storage space than Mobile Voice recordings.

Finding and organizing information


The **Search** and **Help** features on your device helps you quickly locate information.

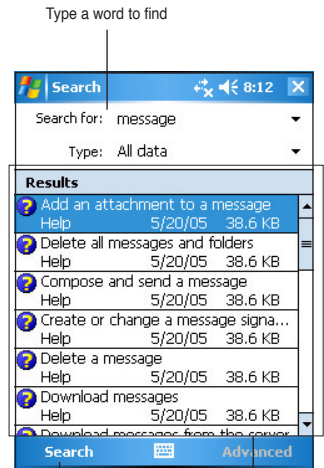
Using the Search function

To search for information:

1. Tap  > **Help > Search**.
2. Enter the text that you want to find, select a data type, then tap **Search** to start the search. To quickly find information that is taking up space on your device, select **Larger than 64 KB** in Type.

To use the Help feature:

1. Tap  > **Help**.
2. Tap a link to the topic that you wish to display.



Tap to search for the word

Topics found containing the searched word

Using the File Explorer

To use the File Explorer to find and organize files:

- Tap  > **Programs > File Explorer** icon to display the files in your device.

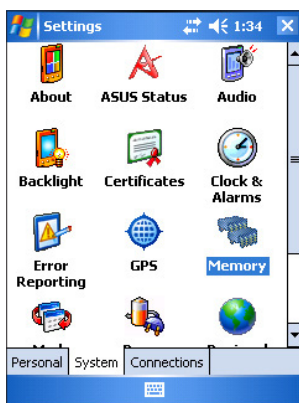
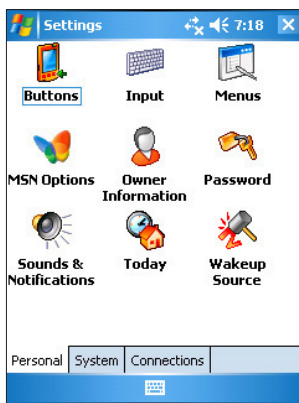
Customizing your device

You can customize your device by adjusting the settings, using the built-in programs, and installing additional software.

To see the available options:


- Tap  > **Settings** > **Personal** or **System** tab.

NOTE Tap and hold the slider on the right side of the screen to display other Settings icons.




Changing the date and time

To change the date and time settings:

1. Tap  > **Settings** > **System** tab > **Clock & Alarms** icon.
2. Under the **Time** tab, make your desired settings.


NOTE Tap the **More** tab and select **Display the clock in the title bar in all programs** to display the clock on the top right corner of the screen all the time.

To change the alarm settings:

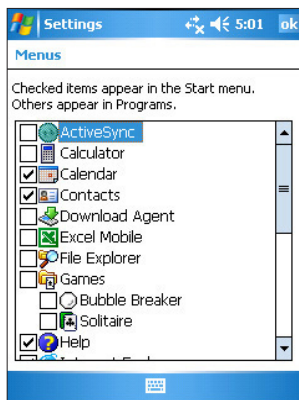
1. Tap  > **Settings** > **System** tab > **Clock & Alarms** icon > **Alarm** tab.
2. Make your desired settings.

Changing the start menu

To change the menu items:


1. Tap  > **Settings** > **Menus** icon.
2. Check the box opposite the items that you wish to appear on the **Start Menu**.
3. Tap **ok**.

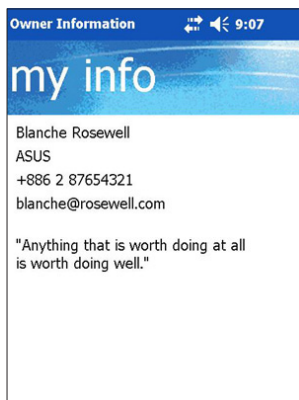
NOTE Items that are not added in the Start menu can be found in the Programs.



Changing the owner information


To change the owner information:

1. Tap  > **Settings** > **Owner Information** icon.
2. Key-in the data that you wish to appear on the Today screen.
3. Add notes to the owner information by tapping the **Notes** tab.
4. Key-in your desired text.
5. Tap the **Options** tab, then select the items that you wish to appear on-screen whenever you turn on the device. Tap **ok** when done.



Setting a password


To set a password for your device:

1. Tap  > **Settings** > **Lock** icon.
2. Check the box **Prompt if device unused**, then select the period from the available options by tapping the down arrow.

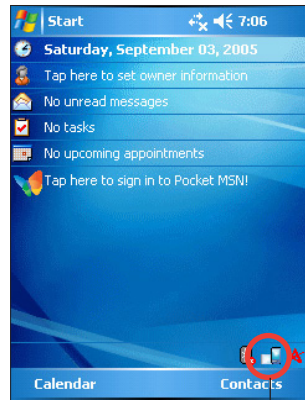
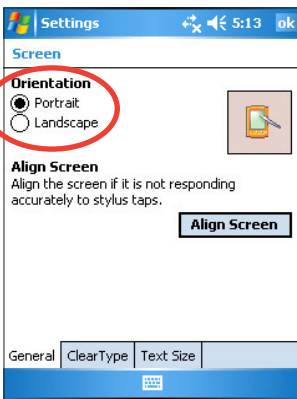
3. Select the password type, **Simple 4 digit** or **Strong alphanumeric**.
4. Key-in a password. If you selected the Strong alphanumeric type of password, you need to key-in the password twice.
5. Tap the **Hint** tab to create a kind of reminder in case you forget your password.
6. Tap **ok** when done.

Changing the screen display orientation

To change the screen display orientation:

1. Tap  > **Settings** > **System** tab > **Screen** icon.
2. Select your desired orientation, then tap **ok**.

Portrait orientation




Tap to change the screen display orientation _____


Landscape orientation



To enable the ClearType feature:

1. Tap  > **Settings** > **System** tab > **Screen** icon > **Clear Type** tab.
2. Check the **Enable Clear Type** box, then tap **ok**.


To change the screen text size:

1. Tap  > **Settings** > **System** tab > **Screen** icon > **Text Size** tab.
2. Move the slider toward the **Smallest** or **Largest** until you attain your desired text size. Tap **ok**.


NOTE The slider is set on the middle by default.

Changing the screen theme

To change the screen theme:


1. Tap  > **Settings** > **Today** icon.
2. Select your desired theme from the available options.
or
Check the box **Use this picture as the background**, then tap **Browse** to select an image from your picture files.
3. Tap **ok** when done.

To specify the items to appear on the Today screen:

1. Tap  > **Settings** > **Today** icon > **Items** tab.
2. Check the box opposite your desired items. Tap **ok** when done.

Changing the button assignments

To change the button assignments:

1. Tap  > **Settings** > **Buttons** icon.
2. Highlight a button by tapping on it.
3. Tap the down arrow to display the programs that you can assign to the button.
4. Repeat steps 2 to 3 to change other button assignments.
5. Tap **ok** when done.





To customize the button settings:

1. Tap the **Up/Down Control** tab.
2. Tap the slider to your desired settings of Up/Down button reaction time.
3. Tap the **Advance** tab to set options for the key light and hold switch.
4. Tap **ok** when done.

Using Mode Switcher and Task Switcher


On the rightmost group of buttons on the device (see Chapter 1), its right button functions, by default, as the Mode Switcher button which allows you to quickly toggle between the Today screen, Windows Media Player, and Rotate screen. The Mode Switcher box appears on-screen when you press this button.

To customize Mode Switcher:

1. Tap  > **Settings** > **System** tab > **Mode Switcher** > **Display settings** tab.
2. The three programs mentioned earlier are selected by default to be included in the Mode Switcher box. You may remove a program by deselecting the corresponding checkbox.
3. To change the ordering of the programs, tap  or  button.
4. Select the checkbox under  if you want to add an Exit icon to the Mode Switcher box.
5. Tap **ok** when done.

If you want to change the button assignment to become the Task Switcher button, follow the steps below. Task Switcher allows you to toggle between currently running programs.


To enable Task Switcher:

1. Tap  > **Settings** > **System** tab > **Mode Switcher** > **Basic** tab, then select Task Switcher.
2. Tap **ok**.

NOTE In the Basic tab, you can increase the delay time for showing the Mode Switcher or Task Switcher box to give you more time to make selections.


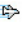



Setting the backlight

To set the backlight:

1. Tap  > **Settings** > **System** tab > **Backlight** icon.
2. Adjust the display brightness by dragging the slider towards **Dark** or **Bright** until you achieve your desired screen brightness.
3. Tap the **Advance** tab and customize the backlight settings when using battery power and AC power.
4. Tap **ok** when done.

Changing the battery power settings

To change the battery power settings:


1. Tap  > **Settings** > **System** tab > **Power** icon to display the battery power status. This screen shows the detected percentages of the remaining battery power. You may not change the information on this screen.
2. Tap the **Advanced** tab to customize the settings for the battery to conserve power.
3. Tap the **CPU Mode** tab to set the processing power to use when using programs.
 -  **Maximum** - allows better CPU performance. Set to this mode when playing games or playing video. However, setting to Turbo mode may reduce the battery life.
 -  **Normal** - allows for a normal CPU speed and more stable performance. Set to this mode when listening to MP3 audio files or for applications that do not require very fast CPU speed.
 -  **Power Save** - sets the CPU to a lower speed. This mode has a lower CPU performance but extends the battery life. Set to this mode when using text based applications such as Word, Excel, etc.
 - For automatic power saving, tick the circle beside  **Auto**. This mode adjusts the CPU speed depending on the program that you are running.
4. Tap **ok** when done.

Selecting sounds and notifications

Your device can remind you of things you have to do in several ways. For example, if you have set up an appointment in Calendar, a task with a due date, or an alarm in Clock, you will be notified in any of the following ways.


- A message box appears on the screen
- A sound is played (you can select the type of sound)
- A light flashes on the device

To set sounds and notifications:

1. Tap  > **Settings** > **Personal** tab > **Sounds & Notifications** icon > **Sounds** tab then select the items that you wish to enable.
2. Tap the **Notifications** tab and set the event notification details.
3. Tap **ok** when done.

Changing the audio settings

To change the Audio settings:

1. Tap  > **Settings** > **System** tab > **Audio** icon.
2. Adjust the volume, balance, treble, and bass, and 3D settings by dragging the slider to the left or to the right until you achieve your desired sound output.
3. Tap **ok** when done.


NOTE Tap the **Default** button to restore the default audio settings.

To change the Microphone settings:

1. Tap **Mic** tab from the audio settings screen.
2. In **MIC Gain Control**, choose either to manually adjust the gain control or let the device automatically adjust the recording volume. Adjust the volume to high or low by dragging the slider to the left or to the right.


NOTE Tap **Default** to revert to the default settings.

Changing the wakeup settings

1. Tap  > **Settings** > **Personal** tab > **Wakeup** Source icon.
2. Check the boxes of the items to control what functions/conditions will turn on the device's power. Pressing any one of the function buttons on the front panel wakes up the device.
3. Tap **ok** when done.

Changing the USB settings

To change the USB settings:

1. Tap  > **Settings** > **Connections** tab > **USB Settings** icon.
2. Choose a USB Interface.
 - **Transmission as Network Interface** - configures your device as a network card so that you can connect it to a PC to browse the Internet, etc.
 - **Transmission as Serial Interface** - allows a serial connection between your device and PC. Select this when using ActiveSync.
 - **Simulation as Card Reader** - turns your device into a mass storage unit similar to a card reader.
3. Tap **ok** when done.


To change the USB charging mode:

1. Tap **USB Charger** tab from the **USB Settings** screen.
2. Choose a USB charging mode.
 - **Slow Charging** - to use this mode, your PC needs to support 100mA.
 - **Fast Charging** - to use this mode, your PC needs to support 500mA.
3. Tap **ok** when done.


NOTE To avoid overcharge, charging automatically stops after 5 hours. In Fast Charging mode, the device is able to be fully charged within 5 hours, but in Slow Charging mode, it is necessary to connect the device again to the power source to get it fully charged.

Changing the memory settings


To display the memory allocation:

1. Tap  > **Settings** > **System** tab > **Memory** icon.
2. Tap **ok** when done.

To check the storage card memory:

1. Tap  > **Settings** > **System** tab > **Memory** icon > **Storage Card** tab to display the memory information for the selected storage card.
2. If you wish to free storage card memory, delete some files from the storage card. Use the File Explorer to delete files. See “Using the File Explorer” for information.

To view the running programs:


1. Tap  > **Settings** > **System** tab > **Memory** icon > **Running Programs** tab.
2. If you wish to free some system memory currently used by the running programs, select a program then tap **Stop**.
To stop all running programs, tap **Stop All**.

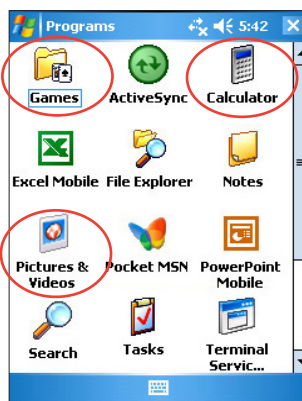
Using simple applications

Your device includes several simple applications that are useful in your day-to-day use of your device.

NOTE The major applications that came with the Microsoft® Windows Mobile® 5.0 are discussed in other chapters.

To access the applications:

1. Tap  > **Programs**.
2. Tap an icon to launch a specific application program.



Calculator

Tap the **Calculator** icon to use basic calculator functions.

Games

Tap the **Games** icon to display the available games.


Bubble Breaker

The main objective of this game is to burst all the bubbles. To do so, tap two or more bubbles of the same color that are connected to each other. The more bubbles you burst at a time, the higher your score.

Solitaire

The main objective of this game is to use all the cards in the deck to build up four suit stacks in ascending order, beginning with the aces.

NOTE


For details on the game rules, see the Help information on your device by tapping  > **Help** > **Contents** > **Play Games**.

Pictures & Videos

Use **Pictures & Videos** to view pictures and play back videos of various formats stored in your device or in a storage card. You can then send them to your friends, view a slideshow of your pictures, play back the video or set a picture as background on the Today screen.

Refer also to the online help on your device for more information on using this feature.

To use Pictures:

1. Tap  > **Programs** > **Pictures & Videos** icon.
2. Tap the thumbnail of the picture or video that you wish to open.
3. When the picture or video appears on the screen, tap **Menu** to zoom (zoom in, zoom out or fit the image to window), play slide show, edit your picture or play back the video.

4. Tap **Menu > Set as Today Background...** to use the picture as your wallpaper in the Today screen.
or
Tap **Menu > Beam picture...** if you wish to send the picture to another device with IR port.
5. Tap **Send** on the Menu bar to attach the picture to an e-mail.

To use Auto Correct:

- Tap **Menu > Edit > Menu > Auto Correct** to automatically adjust the picture.

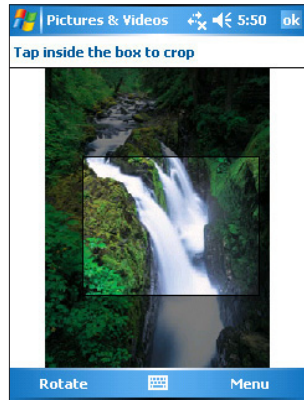
NOTE Tap **Menu > Undo** to reverse the last action made. Tap **Revert to Saved** to reverse all actions done on the picture.

To rotate the picture:

- Tap **Menu > Edit > Rotate** from the Menu bar. Each tap of **Rotate** turns the picture 90 degrees clockwise.

To crop the picture:

1. Tap **Menu > Edit > Menu > Crop**.
2. Drag the stylus pen over the screen to select the part of the picture you want to retain.
3. Tap inside the crop box to crop the picture.
4. Tap **Undo** to reverse the last action made.



To save the picture:

- Tap **Menu > Save As** in order to save the changes after editing the picture.

Checking Device Status



Quickly view essential device information such as storage usage and battery life by using ASUS Status.

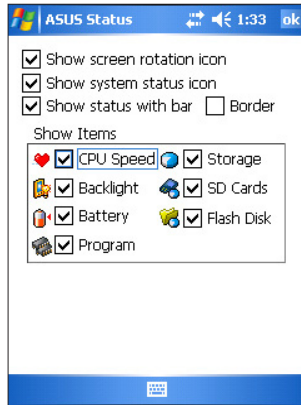
To open ASUS Status:

1. Tap the ASUS Status icon at the lower right corner of the screen.
2. A menu opens displaying general information about your device. Tap an item to access more options for that particular item.



To change Asus Status settings:

1. Tap the **ASUS Status** icon at the lower right corner of the screen then tap **Setting...**
2. Make the desired selections from the available items. You can remove items from the ASUS Status menu by clearing the box beside the items under **Show Items**.
3. Tap **ok** to make the changes.



NOTE

If you clear the box beside the **Show system status** icon, the ASUS Status icon will not show on the Today screen. To make the ASUS Status icon appear again, tap > **Settings** > **System** tab > **ASUS Status** icon.

Chapter 3

Synchronize and Enhance

Microsoft® ActiveSync®

The Microsoft® ActiveSync® is one of the important bundled programs in MyPal. With ActiveSync, you can synchronize the information on your desktop computer with the information on your device. Synchronization compares the data on your device with your desktop computer and updates both computers with the most recent information. To get the latest version of Microsoft® ActiveSync®, visit the website: www.microsoft.com/windowmobile/help/activesync/default.aspx#disclaimer.

For example:

- Keep Pocket Outlook data up-to-date by synchronizing your device with Microsoft Outlook data on your desktop computer.
- Synchronize Microsoft Word and Microsoft Excel files between your device and desktop computer. Your files are automatically converted to the correct format.

NOTE By default, ActiveSync does not automatically synchronize all types of information. Use the ActiveSync options to turn synchronization on or off for specific information types.

With ActiveSync, you can also:

- Copy (rather than synchronize) files between your device and desktop computer
- Control when synchronization occurs by selecting a synchronization mode. For example, you can synchronize continually while connected to your desktop computer or only when you choose to synchronize.
- Select which information types are synchronized and control how much data is synchronized. For example, you can choose to synchronize your appointments of the past two weeks only, appointments older than two weeks are not synchronized.

For more information about using ActiveSync:

1. Start ActiveSync on your desktop computer.
2. On the ActiveSync menu bar, click **Help > Microsoft ActiveSync Help**.

Installing ActiveSync® on your computer

The ActiveSync program is already installed on your device. To synchronize information on your device with your computer, you must also install ActiveSync on your computer. Install ActiveSync from the Companion CD that came with your product package.

NOTE Before starting the ActiveSync installation, make sure that you have Microsoft® Outlook® installed on your computer. If you do not have Outlook, install the Microsoft® Outlook® from the Companion CD. If you have Outlook 98 or Outlook 2000 installed, you are encouraged to update to the Outlook bundled in the Companion CD.

To install ActiveSync on your computer:

1. Turn on your computer and monitor.

IMPORTANT Do not connect your device to your computer until you have finished installing ActiveSync.

2. Place the Companion CD into the optical drive of your computer. The CD autoruns and displays the initial screen, then the Main Menu from which you can start the installation.
3. Click on **Start Here** from the Main Menu.
4. Read the **Overview** before installing ActiveSync to make sure that you perform the installation sequence correctly.
5. If you have not installed Outlook, install it now. Click **Install Outlook** and follow the screen instructions to complete the installation.
6. Click **Download Connection Wizard** and read the overview to see if you require the wizard. Follow the screen instructions to install the wizard on your computer. Return to the Main Menu when done.
7. Click **Install ActiveSync**, then click **Install**.
8. When prompted, select **Run this program from its current location** then click **OK**.
Or, click **Open** to launch the wizard that will guide you through the installation.
9. Follow the instructions on the succeeding screens.
If you have previously installed ActiveSync in your computer, the installation wizard detects it and prompts you with a message.

Click **Next** to continue installing and replace the current version.

Click **Cancel** to quit and keep the current version.

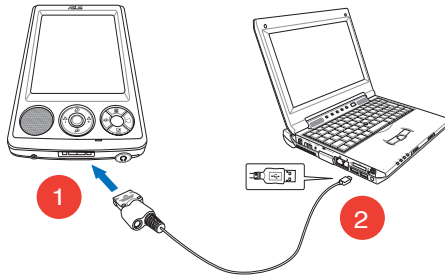
10. Wait until the wizard finishes copying all the necessary files, and updates your system.

NOTE You may connect your Pocket PC to your computer right after installing ActiveSync. Make sure that the **Transmission as Network Interface** or **Transmission as Serial Interface** option is selected in **Settings > Connections tab > USB Settings**.

Synchronizing your device

Connecting your device to a computer

1. Connect the 26-pin device plug of the sync cable to the 26-pin connector at the bottom of your device.
2. Connect the other end of the sync cable to a USB port on your computer.



Setting up a sync relationship

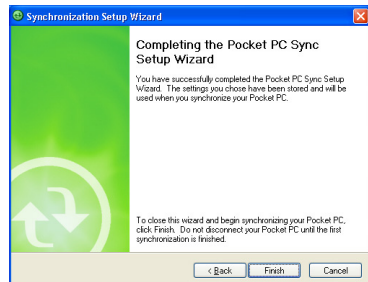
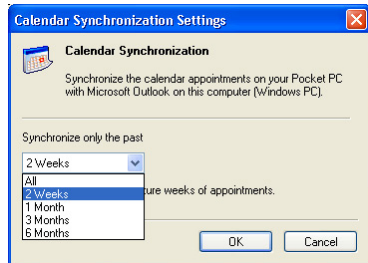
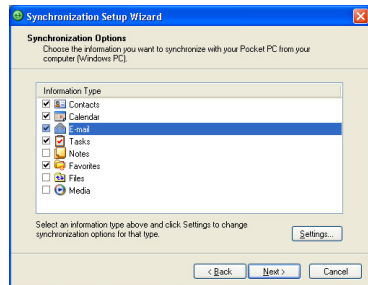
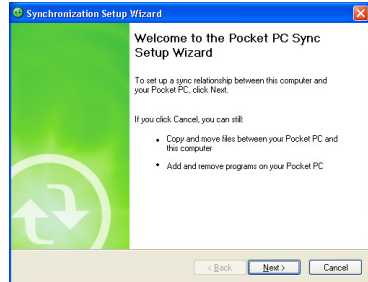
Immediately after you have completed the installation, the **Sync Setup** wizard will start automatically to help you establish a sync relationship and customize your synchronization settings. At this point, you can decide exactly which types of information you would like to synchronize with your computer.

A **sync relationship** is a file that allows you to synchronize your device with your desktop computer. This file is stored on your desktop computer. An additional file that enables your desktop computer to recognize your device is stored on your device.

To set up a sync relationship:

1. On the Synchronization Setup Wizard screen, click **Next**.
2. Select the type of information that you wish to synchronize, then click **Next**. If you wish to customize a synchronized item, highlight the item then click **Settings**.
3. Click **Finish** to complete the sync relationship setup.

On the Calendar Synchronization Settings window, for example, select from the options on how you wish to synchronize the appointments on your device with your computer, then click **OK**.



Immediately after you set up a sync relationship, ActiveSync starts automatically and initiates the first synchronization between your device and your computer.

Refer to the succeeding sections for more details on synchronization.



Checking synchronized information

After your first synchronization, take a look at Calendar, Contacts, and Tasks on your device. You will notice that the calendar information in Microsoft Outlook on your computer was copied to your device, and the information that you have on your device was copied to your computer.



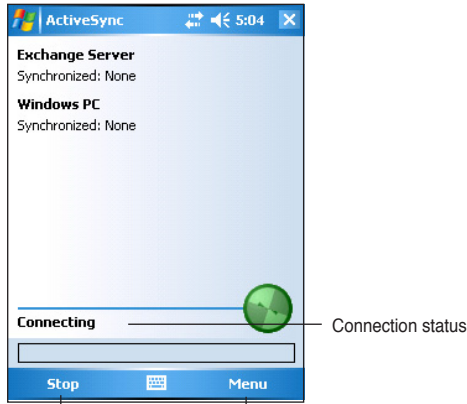
NOTE Open Microsoft Outlook on your desktop computer to see the details of copied information from your device.

Manually initiating synchronization

Once you have set up ActiveSync and completed the first synchronization process, you can initiate synchronization from your device at any time.

To manually initiate synchronization:

1. Tap  > **Programs** > **ActiveSync** to display the ActiveSync screen.




Tap to stop/start synchronization

Tap to change synchronization settings

2. To start synchronization, connect your device to your computer, then tap **Sync**.

To end synchronization, tap **Stop**.

You may synchronize via IR (infrared port) or before changing synchronization settings. To do this, you need to stop synchronization with your computer first.

NOTE For more information on synchronization, tap  while in the ActiveSync screen, then tap **Help**.

Synchronization options

The Microsoft ActiveSync program allows you to customize your synchronization settings at any time. You can select the items to synchronize, set the synchronization schedule, and specify the synchronization rules.

To display the synchronization options:

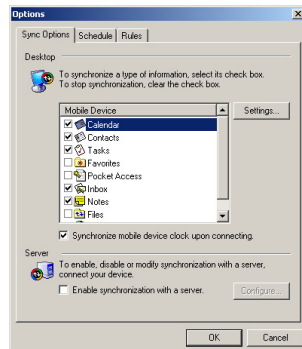
- From the ActiveSync window on your desktop computer, click on the **Options** icon, or
- From the menu bar, click on **Tools**, then **Options**.

To select items to synchronize:

1. Check the box beside the item that you wish to synchronize.
2. Highlight a checked item then click on **Settings** to specify synchronization options for the item.

For example, highlight **Calendar** then click on **Settings** to display the **Calendar Synchronization Settings** window. Customize the available settings, then click **OK** when done.

3. Do the same for the other checked items.



NOTE You cannot set the options for unchecked items.

4. Click **OK** when done.

To set synchronization schedule:

1. Click on the **Schedule** tab.
2. Select your desired synchronization schedule.
3. Click **OK** when done.

To specify synchronization rules:

1. Click on the **Rules** tab.
2. Select your desired settings from the available options.
3. Click **OK** when done.

Installing other applications

The Companion CD packs a variety of useful applications. You may install some of the applications directly from the CD and download other available applications from the Internet.

To install applications from the Companion CD:

1. Place the Companion CD into the optical drive of your computer.
2. From the Main Menu, click **Enhance Your Experience**.
3. Read the **Overview** for the important notes.
4. Click **Mobility** to display the available items.
5. Click **Pocket PC Applications** to display the mobility programs that you can install on your device, then click **Details** for installation instructions.
6. Click **Entertainment** to display the available items.
7. Click **Pocket PC Applications** to display the entertainment programs that you can install on your device, then click **Details** for installation instructions.
8. Click **Desktop Applications** to display the entertainment programs that you can install on your computer, then click **Details** for installation instructions.

Chapter 4

Microsoft® Pocket Outlook

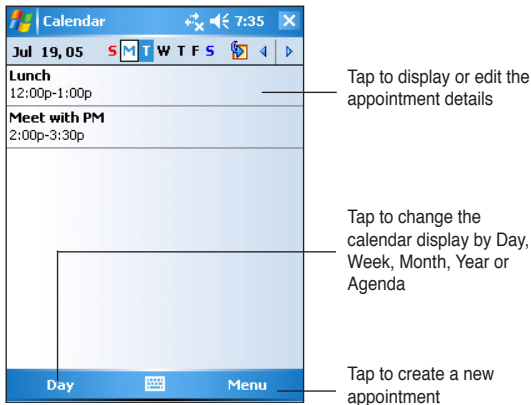
Microsoft® Pocket Outlook includes Calendar, Contacts, Tasks, Notes, and Messaging. You can use these programs individually or together. For example, you can use an e-mail address stored in Contacts to address e-mail messages in Messaging.

Using ActiveSync®, you can synchronize information in Microsoft Outlook or Microsoft Exchange on your desktop computer with your device. You can also synchronize this information directly with a Microsoft Exchange server. Each time you synchronize, ActiveSync compares the changes you made on your device and desktop computer or server and updates both computers with the latest information. For information on using ActiveSync, see ActiveSync Help on your desktop computer.

You can switch to any of the Pocket Outlook programs by tapping .

Calendar

Use Calendar to schedule appointments, including meetings and other events. You can check your appointments in one of several views (Agenda, Day, Week, Month, and Year) and easily switch views using the View menu.

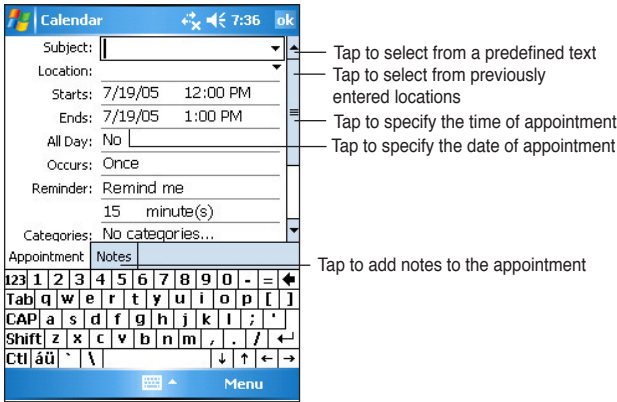


NOTE You can customize the Calendar display, such as changing the first day of the week, by tapping **Menu > Options**.


Creating appointments

To create an appointment:

1. If you are in Day or Week view, tap your desired date for the appointment,
2. Tap **Menu > New Appointment**.

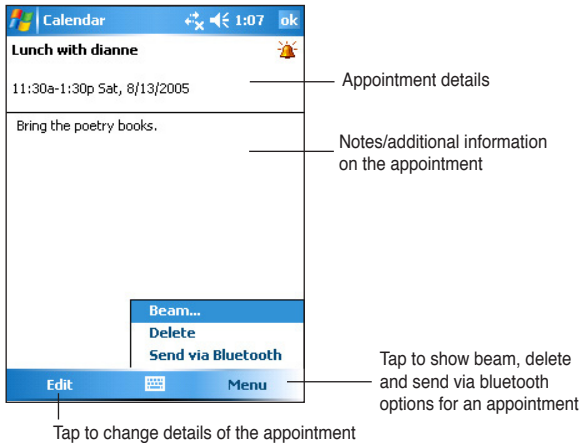


3. Using the input panel, enter a description and a location. Tap to select the field.
4. If needed, tap the date and time to change them.
5. Enter other desired information. You will need to hide the input panel to see all available fields.
6. To add notes, tap the **Notes** tab. You can enter text, draw, or create a recording. For more information on creating notes, see the section “Notes” later in this chapter.
7. When done, tap **ok** to return to Calendar.

NOTE Tap **Menu > Options... > Appointments** tab to set the device to remind you of all your new appointments. Your device will remind you according to the options set in , **Settings, Personal** tab, **Sounds & Notifications**.

Using the summary screen

When you tap an appointment in Calendar, a summary screen appears. To change the appointment, tap **Edit**.



Creating meeting requests

You can set up meetings with users of Outlook and Pocket Outlook. The meeting request will be created automatically and sent either when you synchronize Inbox or when you connect to your e-mail server.

To create a meeting request:

1. Tap **Menu** > **Options** > **Appointments** tab to indicate how you want meeting requests sent.
2. If you send and receive e-mail messages through ActiveSync, select **ActiveSync**.

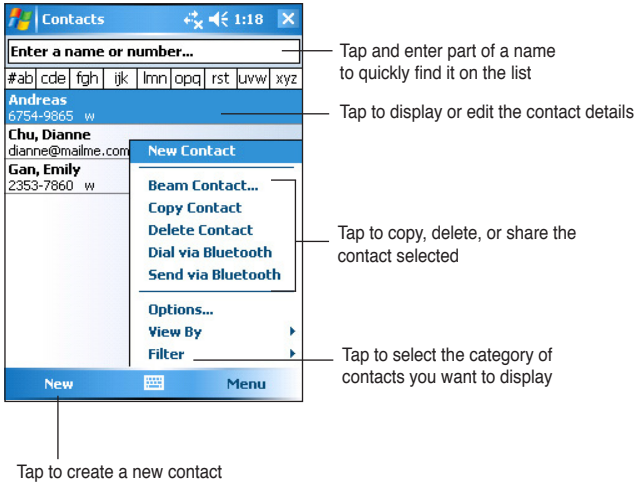
To schedule a meeting:

1. Create an appointment.
2. In the appointment details, hide the input panel, then tap **Attendees**.
3. From the list of e-mail addresses you have entered in Contacts, select the meeting attendees. Tap **Add** to select more contacts. Tap **ok** when done.

The meeting notice is created automatically and placed in the Outbox folder. For more information on sending and receiving meeting requests, see Calendar and Messaging online help on the device.

Contacts


Contacts maintains a list of your friends and colleagues so that you can easily find the information you look for, whether you are at home or on the road. Using the Bluetooth or the infrared port (IR) on the device, you can quickly share Contacts information with other device users.

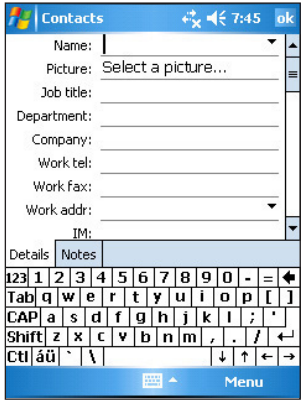


NOTE To change the way information is displayed in the list, tap **Menu > Options**.

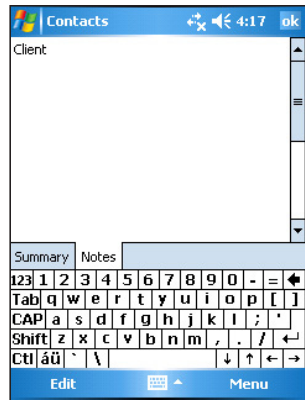
Creating contacts

To create a contact:

1. Tap  > **Contacts** > **New**.
2. Using the input panel, enter a name and other contact information. You will need to scroll down to see all available fields.
3. To assign the contact a category, scroll to and tap Categories, then select a category from the list. On the contact list, you can display the contacts by category.



- To add notes, tap the **Notes** tab.
You can enter text, draw, or create a recording.
For more information on creating notes, see the section “Notes” later in this chapter.
- Tap **ok** to return to the contact list when done.



Using the summary screen

Tapping a contact on the contact list displays a summary screen. To change the contact information, tap **Edit**.

