

User's Manual
ASUS BT-180

Contents

Notice	3
Safety statements	4
System requirements.....	6
Installing the device drivers.....	6
BT-183 specification summary.....	8

Notices

Federal Communications Commission Statement

This device complies with FCC Rules Part 15. Operation is subject to the following

- This device may not cause harmful interference, and
- This device must accept any interference received, including interference that may cause undesired operation.

This equipment has been tested and found to comply with the limits for a class B digital device, pursuant to Part 15 of the Federal Communications Commission (FCC) rules. These limits are designed to provide reasonable protection against harmful interference in a residential installation. This equipment generates, uses, and can radiate radio frequency energy and, if not installed and used in accordance with the instructions, may cause harmful interference to radio communications. However, there is no guarantee that interference will not occur in a particular installation. If this equipment does cause harmful interference to radio or television reception, which can be determined by turning the equipment off and on, the user is encouraged to try to correct the interference by one or more of the following measures:

- Reorient or relocate the receiving antenna.
- Increase the separation between the equipment and receiver.
- Connect the equipment into an outlet on a circuit different from that to which the receiver is connected.
- Consult the dealer or an experienced radio/TV technician for help.

CAUTION! You are cautioned that changes or modifications not expressly approved by the party responsible for compliance could void your authority to operate the equipment.

Reprinted from the Code of Federal Regulations #47, part 15.193, 1993.

Washington DC: Office of the Federal Register, National Archives and Records Administration, U.S. Government Printing Office.

Safety statements

Regulatory Information/Disclaimers

Installation and use of this Bluetooth device must be in strict accordance with the instructions included in the user documentation provided with the product. Any changes or modifications (including the antennas) made to this device that are not expressly approved by the manufacturer may void the user's authority to operate the equipment. The manufacturer is not responsible for any radio or television interference caused by unauthorized modification of this device, or the substitution of the connecting cables and equipment other than manufacturer specified. It is the responsibility of the user to correct any interference caused by such unauthorized modification, substitution or attachment. Manufacturer and its authorized resellers or distributors will assume no liability for any damage or violation of government regulations arising from failing to comply with these guidelines.

CAUTION! To maintain compliance with FCC's RF exposure guidelines, this equipment should be installed and operated with minimum distance [20cm] between the radiator and your body. Use on the supplied antenna. Unauthorized antenna, modification, or attachments could damage the transmitter and may violate FCC regulations.

Safety Information

In order to maintain compliance with the FCC RF exposure guidelines, this equipment should be installed and operated with minimum distance [**20cm**] between the radiator and your body. Use only with supplied antenna. Unauthorized antenna, modification, or attachments could damage the transmitter and may violate FCC regulations.

CAUTION! Any changes or modifications not expressly approved in this manual could void your authorization to use this device.

MPE Statement

Your device contains a low power transmitter. When device is transmitted it sends out Radio Frequency (RF) signal.

FCC Radio Frequency Exposure

This Bluetooth device has been evaluated under FCC Bulletin OET 65C and found compliant to the requirements as set forth in CFR 47 Sections 2.1091, 2.1093, and 15.247(b)(4) addressing RF Exposure from radio frequency devices. The radiation output power of this Bluetooth device is far below the FCC radio frequency exposure limits. Nevertheless, this device shall be used in such a manner that the potential for human contact during normal operation – as a mobile or portable device but use in

a body-worn way is strictly prohibit. When using this device, a certain separation distance between antenna and nearby persons has to be kept to ensure RF exposure compliance. In order to comply with the RF exposure limits established in the ANSI C95.1 standards, the distance between the antennas and the user should not be less than [20cm].

RF Exposure

The antenna(s) used for this transmitter must not be co-located or operating in conjunction with any other antenna or transmitter.

About this guide

This user guide contains the information your ASUS Bluetooth Module.

System requirements

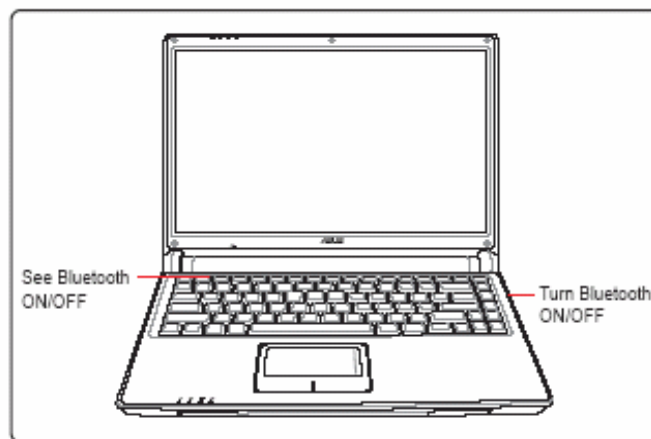
Before installing the ASUS Bluetooth module, make sure that your system meets the following requirements:

- Intel® Pentium® 4 or AMD K7/K8 system
- Minimum 64MB system memory
- Windows® 98SE/ME/2000/XP operating system
- Optical drive (for software installation)
- An available USB port (USB 2.0 recommended because USB 1.1 cannot achieve maximum wireless performance)

Installing the device drivers

To install the device driver in your computer:

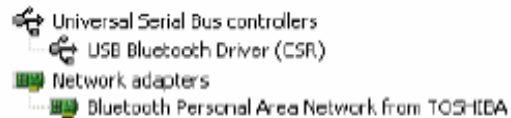
Insert the support CD to the optical drive and follow the following procedure.



Before



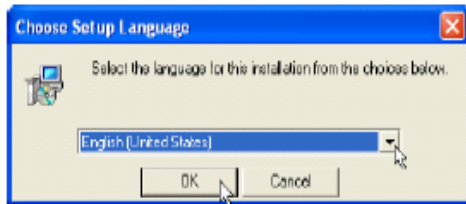
After



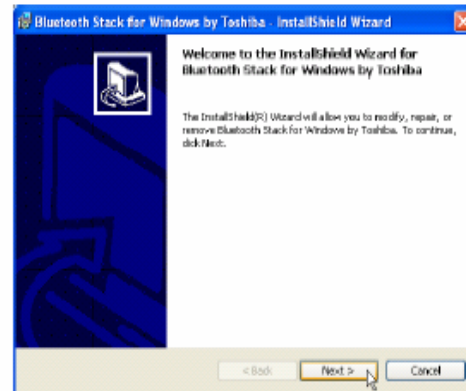
(Screens and drivers may vary depending on your model and operating system.)

Bluetooth Driver Setup

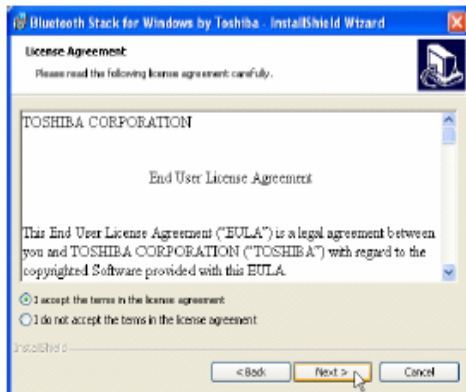
Running setup will give you the following wizard:



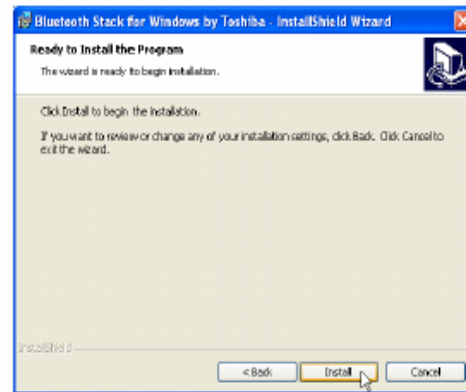
1. Select a language from the pull down menu.



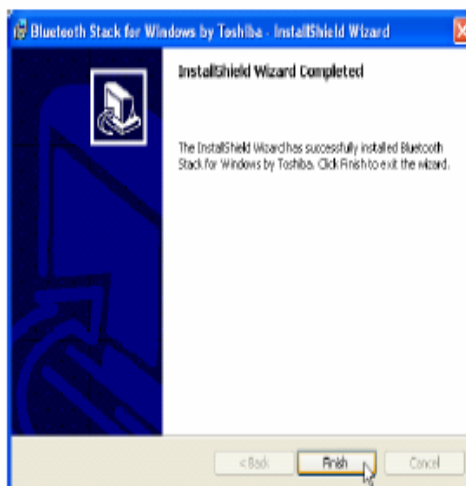
2. Click Next on the "Welcome" screen.



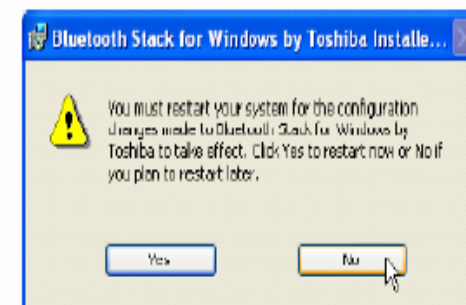
3. Click Next after reading the "License Agreement".



4. Click Install when the wizard is ready to install the drivers.



5. Click Finish when setup is complete.



6. Click No... in order to install other items.

BT-180 specification summary

- i. Fully qualified Bluetooth v2.0 system
- ii. Enhanced Data Rate (EDR) compliant for both 2Mbps and 3Mbps supported
- iii. Fully speed operation with Piconet and Scatternet support
- iv. Electrical compliant to USB1.1&2.0 through proprietary Pin Connector (Note: Vcc is 3.3V, 5V is not allowed)
- v. Implement 802.11 coexistence solution by AFH (Adjacent Frequency Hopping), WCS (Wireless Coexistence System), and Bluetooth Priority
- vi. Slim module with 35*11 mm dimension
- vii. Chip Antenna and RF connector are manufacturing optional for different application
- viii. All components on single side of PCB
- ix. Antenna matching could be fine tuned if mechanism is changed

Features	Description
Standard	Bluetooth v2.0 Standard
Frequency Band	2402MHz~2483MHz
Sensitivity	-84~-86dBm
Output Power	Typical 3dBm on antenna port
Integrated Antenna	Peak Gain @ 2.45GHZ is about +2dBi
Coverage	10m~20m(depending on environment and NB model)
Temperature	Operation temperature(0~60C) Storage temperature(-10~70C)
Power consumption	45mA during Tx packet mode;10mA when idle
Input Voltage	Typical 3.3V
Interface	10 pin connector(Aces 88460 10P; JST SM10B-SURS-TF(LF)(SN))
Integrated Antenna	Mag.Layers LTA-5824-2G4H2-A1
RF connector	Hirose U.FL-R-SMT; Foxconn HDN92017
Dimension	length:35mm; width:11mm; height:2.95mm