



**Volume down:** Decreases the volume.



**Number Lock:** Toggles the Number Lock function on/off



**Scroll Lock:** Toggles the Scroll Lock function on/off.



**Stop:** Stops the media file, such as video or audio file, that is currently playing.



**Play/Pause:** Plays or pauses the media file that is currently playing.



**Previous:** Goes back to the previous track of the currently playing media file.



**Next:** Goes to the next track of the currently playing media file.



**Page Up:** Scrolls up in documents or in webpages.



**Page Down:** Scrolls down in documents or in webpages.



**Super Hybrid Engine Key:** Shows the various power-saving modes.

## Special keys



Displays the Windows® XP Start menu.





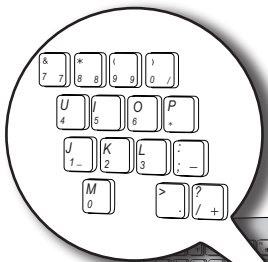
Activates the properties menu and is equivalent to right-clicking the touchpad/mouse on an object.



Press to go back to the previous page or the home page.

## Keypad overlay

Some of the keys have numeric or character overlay functions. To key in letters and symbols, simultaneously press  +  to enable the Number Lock function. To enter uppercase letters or enter the upper character, press the Shift key and the key that you want to use.



## Using the touch panel

Your EKB PC comes with a 5" Touch panel, which enables you to use your EKB PC like a standard fully-functional computer. The touch panel allows you to use touch gestures instead of a standard mouse to select items or navigate around the screen.

### Using the Touch gestures

Touch gestures are movements that you make with the use of your finger to select items or navigate around the screen.



---

Use light pressure when making a touch gesture.

---



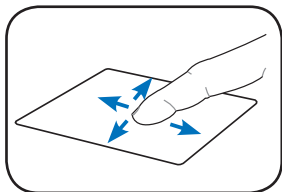
---

Do not use any objects in place of your finger to operate the touch panel. Doing so may damage or scratch the touchscreen's surface.

---

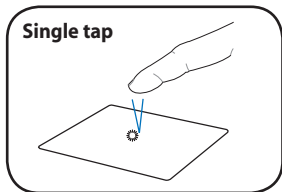
### Moving around the screen

Slide your finger upward/downward/leftward/rightward to move up/down/to the left/to the right of the screen.

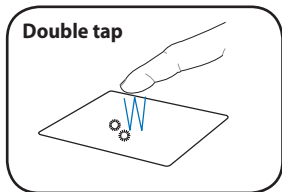


### Tapping

Tap once to select an item.

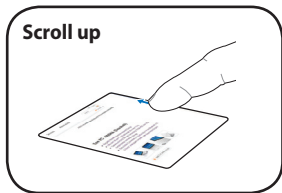


Tap twice to launch an application.

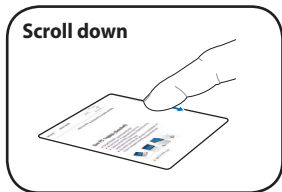


## Scrolling

Tap your finger on the scrollbar, then slide your finger upward to scroll up a document or a webpage.



Tap your finger on the scrollbar, then slide your finger downward to scroll down a document or a webpage.




# Updating the BIOS

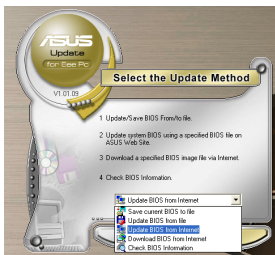
ASUS Update, a pre-installed utility in your EKB PC, allows you to manage, save, and update the EKB PC BIOS in Windows® environment.



- ASUS Update requires an Internet connection either through a network or an Internet Service Provider (ISP).
- This utility is also available in the support DVD that comes with the EKB PC package.

## To update the BIOS:

1. Press the Start button  to display the Start menu.
2. Select **All Programs > ASUS > ASUSUpdate for Eee PC > ASUSUpdate** to launch the ASUS Update utility.
3. From the dropdown list, select any of the updating process:



### Updating from the Internet

- a. Select **Update BIOS from the Internet**, then click **Next**.
- b. Select the ASUS FTP site nearest you to avoid network traffic, or click **Auto Select** then click **Next**.
- c. From the FTP site, select the BIOS version that you wish to download then click **Next**.

### Updating from a BIOS file

- a. Select **Update BIOS from a file**, then click **Next**.
  - b. Locate the BIOS file from the Open window, then click **Open**.
4. Follow the onscreen instructions to complete the updating process.

# Chapter 3

## Getting connected

### Connecting to the Internet

#### Wired connection

Use an RJ-45 cable to connect the EeeKeyboard PC to an ADSL modem or a local area network (LAN).

#### Connecting via an ADSL modem

##### To connect via an ADSL modem:

1. Connect one end of the RJ-45 cable to the LAN port of the ADSL modem and the other end to the LAN port at the back of the EeeKeyboard PC.
2. Turn on the ADSL modem and the EeeKeyboard PC.

#### Connecting via the Local Area Network (LAN)

##### To connect via LAN:


1. Connect one end of the RJ-45 cable to your LAN and the other end to the LAN port at the back of the EeeKeyboard PC.
2. Configure the Internet connection settings using a dynamic or static IP address.

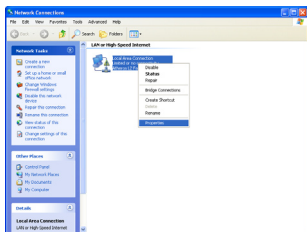


- 
- Refer to the succeeding sections to configure the Internet settings using a dynamic or static IP address.
  - If you have difficulty connecting to the Internet via LAN, contact your network administrator.
-

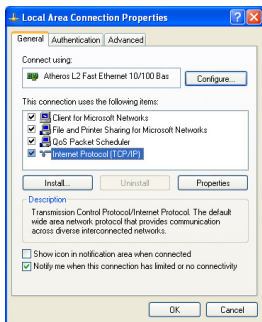
## Using a dynamic IP address

To use a dynamic IP address:

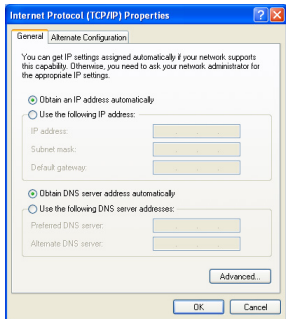
1. Right-click the network icon  on the Windows® taskbar and select **Open Network Connections**.
2. Right-click **Local Area Connection** and select **Properties**.



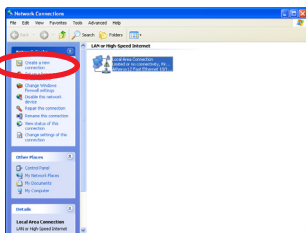
3. Click **Internet Protocol (TCP/IP)** and click **Properties**.



4. Click **Obtain an IP address automatically** and click **OK**.



5. Click **Create a new connection** to start the New Connection Wizard.

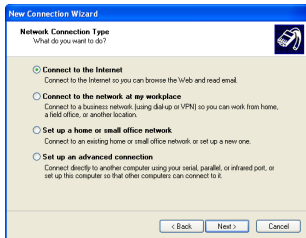


6. Click **Next**.

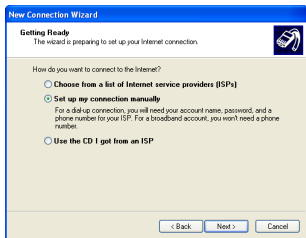




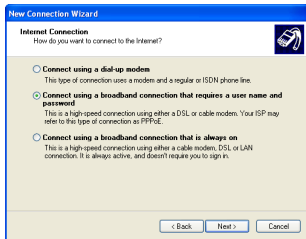
7. Select **Connect to the Internet** and click **Next**.



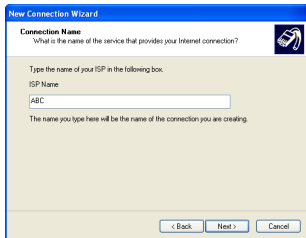
8. Select **Set up my connection manually**.



9. Select your connection type and click **Next**.



10. Enter your ISP Name and click **Next**.



11. Key in your **User name** and **Password**. Click **Next**.



12. Click **Finish** to finish the configuration.



13. Enter your user name and password. Click **Connect** to connect to the Internet.



## Using a static IP address

### To use a static IP address:

1. Repeat steps 1–3 in the section **Using a dynamic IP**.
2. Click **Use the following IP address**.
3. Key in the **IP address**, **Subnet mask**, and **Gateway**. Get these information from your ISP or from your network administrator.
4. If needed, enter the preferred DNS Server address and alternative address.
5. After entering all the related values, click **OK** to establish the connection.




---

Contact your Internet Service Provider (ISP) or your network administrator if you have problems connecting to the network.

---

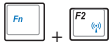
# Connecting to a wireless network

## To connect to a wireless network:

1. Connect the wireless antenna to the wireless antenna ports at the back of the EeeKeyboard PC.
2. Double-click the wireless network icon  in the Windows taskbar.

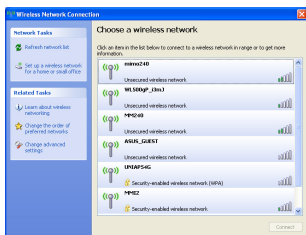


If the wireless connection icon does not show in the taskbar, press



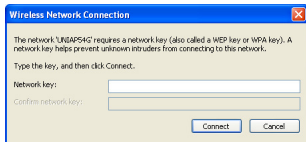
(**<Fn>** + **<F2>**) to turn on the wireless function.

3. From the list, select the wireless network or access point you want to connect to and click **Connect** to establish the connection.

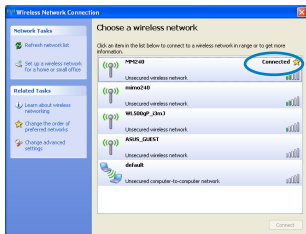


If you cannot find the desired access point, click **Refresh network list** in the left pane and select from the list again.

4. When connecting, you may have to key in a password.



- After establishing a successful connection, the connection status is displayed.



## Using Bluetooth®

Bluetooth® is a short-range wireless technology that allows your EeeKeyboard PC to communicate with other Bluetooth-enabled devices, such as PCs, mobile devices, headsets, GPS receivers, and headset, within a short range of about 10 meters or 30 feet. Bluetooth® devices only need to be within the specified range to exchange information and the devices do not need any physical connection.





By default, the Bluetooth function is turned on on your EeeKeyboard PC.

## Setting up the basic Bluetooth environment


Your EeeKeyboard PC is equipped with a built-in Bluetooth transceiver. Before you can begin to use the Bluetooth function on your EeeKeyboard PC, you need to set up the basic Bluetooth settings.

### To set up the basic Bluetooth environment:

- On the EeeKeyboard PC,

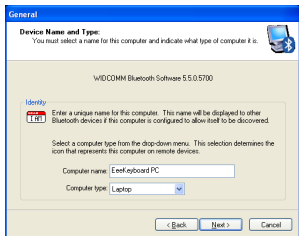
press  +  (<Fn> + <F2>) repeatedly until **WLAN OFF & Bluetooth ON** or **WLAN & Bluetooth ON** is shown.



- On the Windows® desktop, click **My Bluetooth Places**. In the **Initial Bluetooth Configuration Wizard**, select the alternative locations where you want the Bluetooth icon  to appear. Click **Next**.



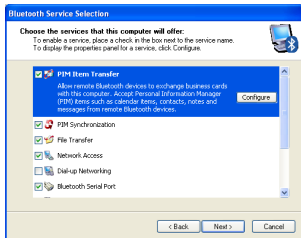
- Key in a unique name for your EeeKeyboard PC and select the computer type. Click **Next**.



- Click **Next** to configure the Bluetooth services that your EeeKeyboard PC will offer to or share with other Bluetooth devices.



5. Select the Bluetooth service that you want to enable or configure. Click **Next**.



6. Before setting up a Bluetooth connection, ensure that the other device is set to discoverable mode. Click **Next** to start searching for other Bluetooth devices.

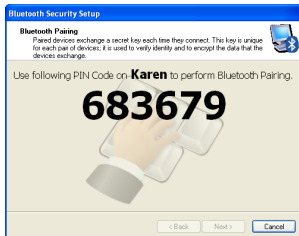


To set the other device to discoverable mode, refer to the documentation that came with the other device.

7. From the list of available Bluetooth devices, select the device you want to connect to, then click **Next**.

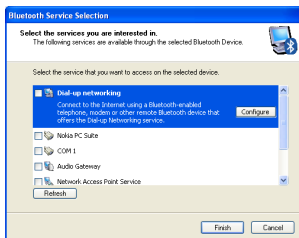



8. If your selected device requires a security key to put it on a pairing mode with your EeeKeyboard PC, key in the Bluetooth security code.



Some Bluetooth devices come with built-in security code or passkey. Refer to the device's documentation for the security code or passkey.

9. After pairing the devices, select the service you want from the list and click **Finish** to use the selected service.



Click the Bluetooth icon  to access or configure other Bluetooth features.