

# Table of Contents

## Chapter 1: Introducing the Eee PC

About This User's Manual .....	1-2
Notes for This Manual .....	1-3
Safety Precautions .....	1-4
Transportation Precautions .....	1-5
Charging Your Batteries.....	1-5
Airplane Precautions .....	1-5
Preparing your Eee PC .....	1-6

## Chapter 2: Knowing the Parts

Top Side .....	2-2
Bottom Side.....	2-5
Right Side .....	2-7
Left Side .....	2-8
Rear Side.....	2-9

## Chapter 3: Getting Started

Power System .....	3-2
Using AC Power .....	3-2
Using Battery Power .....	3-3
Battery Care .....	3-4
Touchpad Usage .....	3-6
Single-finger gesture input.....	3-6
Multi-finger gesture input.....	3-8
Keyboard Usage.....	3-9
Special Function Keys .....	3-9
First Run Wizard .....	3-12
Operating Mode .....	3-14
Shutdown.....	3-15

## Chapter 4: Using the Eee PC

Internet .....	4-2
Configuring a wireless network connection.....	4-2
Configuring a network connection.....	4-4
Wireless Point-to-Point Protocol over Ethernet.....	4-9

# Table of Contents

Browsing web pages .....	4-11
Enjoying free resources .....	4-12
Accessing E-mail .....	4-13
Chatting with friends .....	4-14
Checking the World Clock .....	4-16
Work .....	4-17
Office applications .....	4-17
Management software .....	4-21
Accessories & Dictionary .....	4-23
Learn .....	4-24
Science .....	4-24
Language .....	4-25
Math .....	4-25
Paint .....	4-26
Web Learn .....	4-26
Play .....	4-27
Media Player .....	4-27
Music Manager .....	4-28
Photo Manager .....	4-29
Video Manager .....	4-30
Webcam .....	4-30
Sound Recorder .....	4-31
Games .....	4-31
Settings .....	4-32
Desktop Mode .....	4-32
Anti-Virus .....	4-33
Volume .....	4-33
Instant Shutdown .....	4-34
Printers .....	4-34
System Info .....	4-35
Date & Time .....	4-35
Personalization .....	4-36
Add/Remove Software .....	4-36
Touchpad .....	4-39
Disk Utility .....	4-40

# Table of Contents

Diagnostic Tools .....	4-40
Voice Command (in selected territories).....	4-42
Task Manager .....	4-43
Favorites .....	4-44

## Chapter 5: System Recovery

System Recovery .....	5-2
Using Hidden Partition .....	5-2
Using the Recovery DVD.....	5-3
Using USB Flash Disk .....	5-4

## Chapter 6: Installing Windows® XP

Preparing to install Windows® XP .....	6-2
Installing Windows® XP.....	6-2
Support CD information .....	6-4
Running the support CD.....	6-4
Drivers menu.....	6-5
Utilities menu.....	6-6
Contact .....	6-7
Other information .....	6-7

## Appendix

Trademark Statements .....	A-2
Qualified Vendor List.....	A-3
Declarations and Safety Statements .....	A-10
GNU General Public License.....	A-21
Copyright Information .....	A-32
Limitation of Liability .....	A-33
Service and Support.....	A-33

**About This User's Manual**

**Notes for This Manual**

**Safety Precautions**

**Preparing Your Eee PC**

**Introducing  
the Eee PC**

A large, light gray, stylized number '1' is positioned behind the text 'Introducing the Eee PC', serving as a chapter or section indicator.

# About This User's Manual

You are reading the Eee PC User's Manual. This User's Manual provides information regarding the various components in the Eee PC and how to use them. The following are major sections of this User's Manual:

## 1. **Introducing the Eee PC**

Introduces the Eee PC and this User's Manual.

## 2. **Knowing the Parts**

Provides information on the Eee PC's components.

## 3. **Getting Started**

Provides information on getting started with the Eee PC.

## 4. **Using the Eee PC**

Provides information on using the Eee PC's utilities.

## 5. **System Recovery**

Gives you information on system recovery.

## 6. **Installing Windows® XP**

Gives you information on how to install Windows® XP on your Eee PC and the content of the support CD.

## 7. **Appendix**

Provides you QVL and gives safety statements.

## Notes for This Manual

A few notes and warnings are used throughout this guide, allowing you to complete certain tasks safely and effectively. These notes have different degrees of importance as follows:



---

**WARNING!** Important information that must be followed for safe operation.

---



---

**IMPORTANT!** Vital information that must be followed to prevent damage to data, components, or persons.

---



---

**TIP:** Tips for completing tasks.

---



---

**NOTE:** Information for special situations.

---

# Safety Precautions

The following safety precautions will increase the life of the Eee PC. Follow all precautions and instructions. Except as described in this manual, refer all servicing to qualified personnel. Do not use damaged power cords, accessories, or other peripherals. Do not use strong solvents such as thinners, benzene, or other chemicals on or near the surface.



Disconnect the AC power and remove the battery pack(s) before cleaning. Wipe the Eee PC using a clean cellulose sponge or chamois cloth dampened with a solution of nonabrasive detergent and a few drops of warm water and remove any extra moisture with a dry cloth.



DO NOT place on uneven or unstable work surfaces. Seek servicing if the casing has been damaged.



DO NOT place or drop objects on top and do not shove any foreign objects into the Eee PC.



DO NOT expose to dirty or dusty environments. DO NOT operate during a gas leak.



DO NOT expose to strong magnetic or electrical fields.



DO NOT press or touch the display panel. Do not place together with small items that may scratch or enter the Eee PC.



DO NOT expose to or use near liquids, rain, or moisture. DO NOT use the modem during electrical storms.



DO NOT leave the Eee PC on your lap or any part of the body to prevent discomfort or injury from heat exposure.



Battery safety warning: DO NOT throw the battery in fire. DO NOT short circuit the contacts. DO NOT disassemble the battery.



SAFE TEMP: This Eee PC should only be used in environments with ambient temperatures between 5°C (41°F) and 35°C (95°F)



INPUT RATING: Refer to the rating label on the bottom of the Eee PC and be sure that your power adapter complies with the rating.



DO NOT throw the Eee PC in municipal waste. Check local regulations for disposal of electronic products.



DO NOT carry or cover a Eee PC that is powered ON with any materials that will reduce air circulation such as a carrying bag.

## Transportation Precautions

To prepare the Eee PC for transport, you should close the display panel to protect the keyboard and display panel.

The Eee PC's surface is easily dulled if not properly cared for. Be careful not to rub or scrape surfaces when transporting your Eee PC. You can put your Eee PC in a carrying case for protection from dirt, water, shock, and scratches.



---

For the model that comes with a hard disk drive, you should turn it OFF and **disconnect all external peripherals to prevent damage to the connectors** when you prepare for transport. The hard disk drive's head retracts when the power is turned OFF to prevent scratching of the hard disk surface during transport. Never transport it while the power is still ON.

---

## Charging Your Batteries

If you intend to use battery power, be sure to fully charge your battery pack and any optional battery packs before going on long trips. Remember that the power adapter charges the battery pack as long as it is plugged into the computer and an AC power source. Be aware that it takes much longer to charge the battery pack when the Eee PC is in use.

## Airplane Precautions

Contact your airline if you want to use the Eee PC on the airplane. Most airlines have restrictions for using electronic devices. Most airlines allow electronic use only between and not during takeoffs and landings.



---

There are three main types of airport security devices: X-ray machines (used on items placed on conveyor belts), magnetic detectors (used on people walking through security checks), and magnetic wands (hand-held devices used on people or individual items). You can send your Eee PC and diskettes through airport X-ray machines. However, it is recommended that you do not send your Eee PC or diskettes through airport magnetic detectors or expose them to magnetic wands.

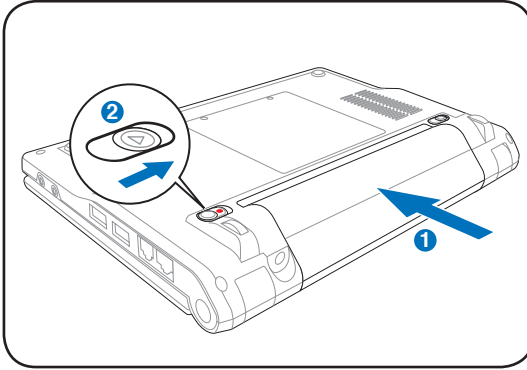
---



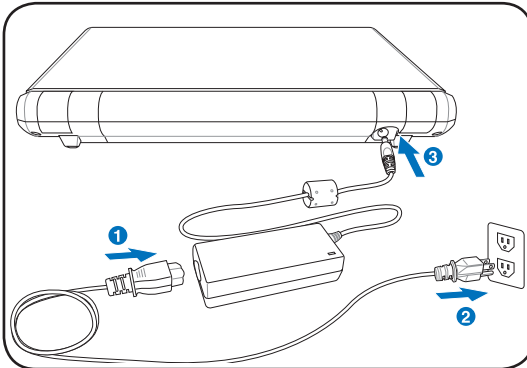
# Preparing your Eee PC

These are only quick instructions for using your Eee PC. Read the following chapters for detailed information.

## 1. Install the battery pack

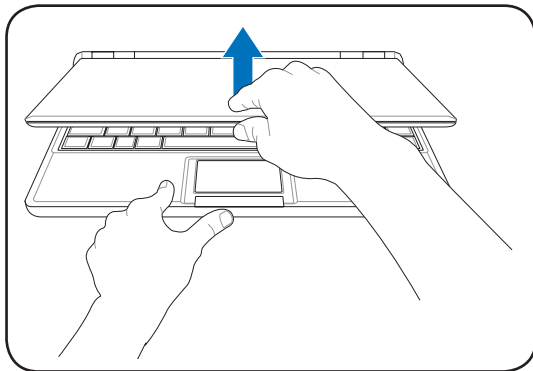


## 2. Connect the AC power adapter

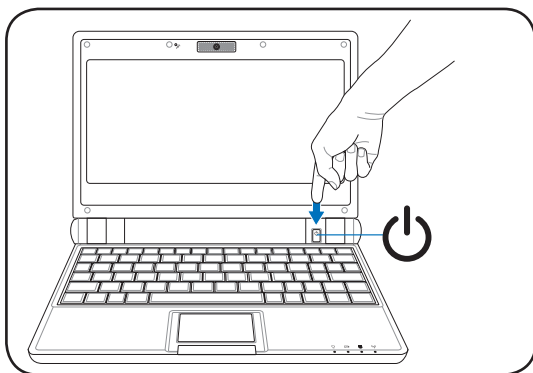


Your Eee PC may come with either a two or three-prong plug depending on territory. If a three-prong plug is provided, you must use a grounded AC outlet or use a properly grounded adapter to ensure safe operation of the Eee PC.

### 3. Open the display panel



### 4. Turn ON the Eee PC



When you open the display panel, do not force it down to the display panel or else the hinges may break! Never lift the Eee PC by the display panel!



**Top Side**

**Bottom Side**

**Right Side**

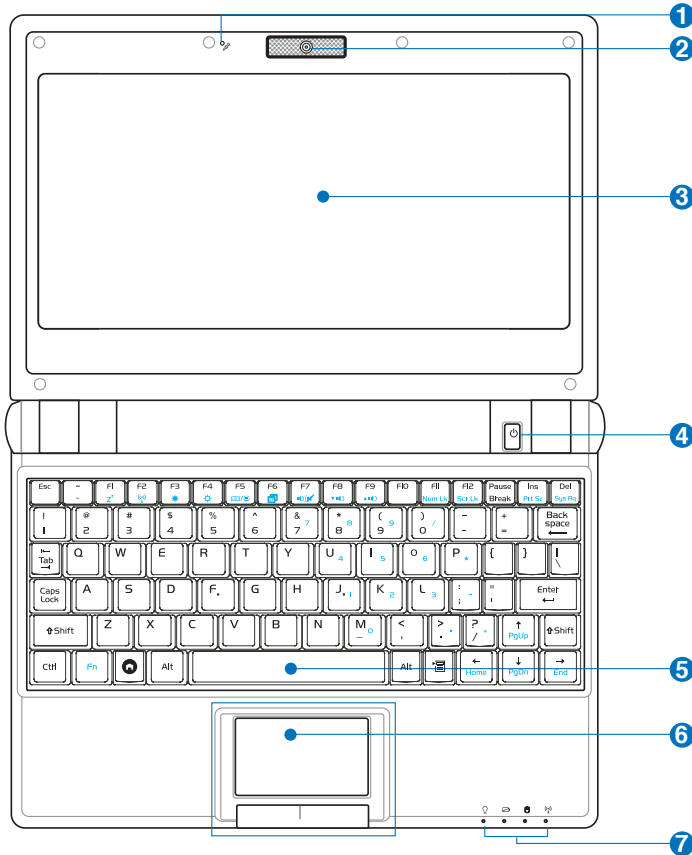
**Left Side**

**Rear Side**


# Knowing the Parts **2**


# Top Side


Refer to the illustration below to identify the components on this side of the Eee PC.





The keyboard differs for each territory.


- 1**  **Microphone (Built-in)**

The built-in mono microphone can be used for skype, voice narrations, or simple audio recordings.
- 2**  **Built-in Camera**

The built-in camera allows picture taking or video recording.
- 3**  **Display Panel**

The display panel functions the same as a desktop monitor. The Eee PC uses an active matrix TFT LCD, which provides excellent viewing like that of desktop monitors. Unlike desktop monitors, the LCD panel does not produce any radiation or flickering, so it is easier on the eyes. Use a soft cloth without chemical liquids (use plain water if necessary) to clean the display panel.
- 4**  **Power Switch**

The power switch allows powering ON and OFF the Eee PC and recovering from STR. Press the switch once to turn ON and hold it to turn OFF the Eee PC. The power switch only works when the display panel is opened.
- 5**  **Keyboard**

The keyboard provides keys with comfortable travel (depth at which the keys can be depressed) and palm rest for both hands.
- 6**  **Touchpad and Buttons**

The touchpad and its buttons comprises a pointing device that provides the same functions as a desktop mouse. Multi-finger gesture input is available to allow easy web and document navigation.

7



## Status Indicators (front)



### Power Indicator

The power indicator lights when the Eee PC is turned ON and blinks slowly when the Eee PC is in the Save-to-RAM (Suspend) mode. This indicator is OFF when the Eee PC is turned OFF.



### Battery Charge Indicator

The battery charge indicator (LED) shows the status of the battery's power as follows:

**ON:** The Eee PC's battery is charging when AC power is connected.

**OFF:** The Eee PC's battery is charged or completely drained.

**Blinking:** Battery power is less than 10% and AC power is not connected.



### Solid-State disk (SSD) Indicator

The solid-state disk drive indicator blinks when data is written to or read from the disk drive.



### Wireless Indicator

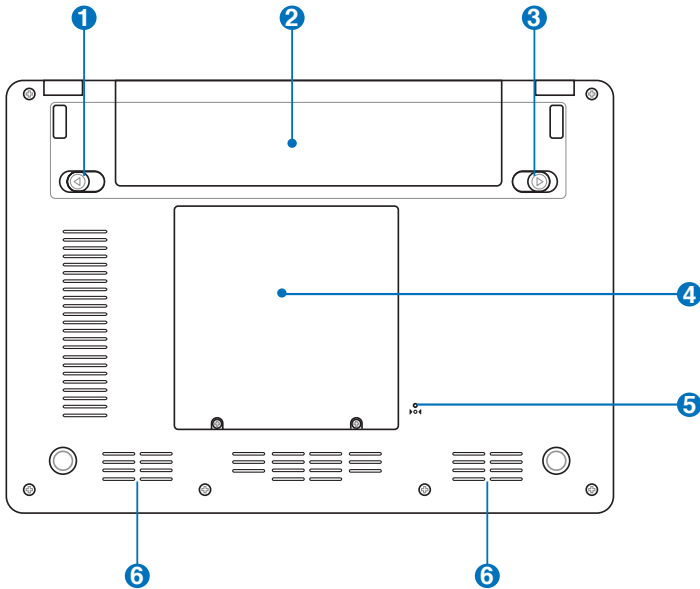
This is only applicable on models with built-in wireless LAN. When the built-in wireless LAN is enabled, this indicator lights.

## Bottom Side

Refer to the illustration below to identify the components on this side of the Eee PC.



The bottom side may vary in appearance depending on model.



The bottom of the Eee PC can get very hot. Be careful when handling the Eee PC while it is in operation or recently been in operation. High temperatures are normal during charging or operation. DO NOT use on soft surfaces such as beds or sofas, which may block the vents. DO NOT PUT THE Eee PC ON YOUR LAP OR OTHER PARTS OF THE BODY TO AVOID INJURY FROM THE HEAT.

### 1 Battery Lock - Spring

The spring battery lock keeps the battery pack secure. When the battery pack is inserted, it will automatically lock. When removing the battery pack, this spring lock must be retained in the unlocked position.