

5. Enter the wireless channel information and click **Next**.



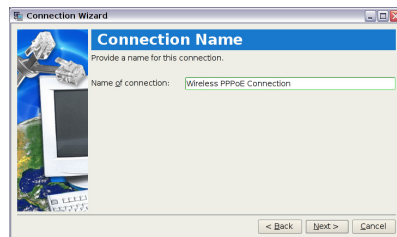
6. Set the encryption information for the wireless connection and click **Next**.



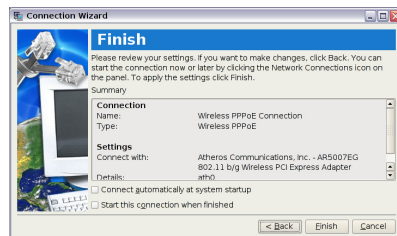
7. Enter your user name and password and click **Next**.



8. Enter a name for this connection and click **Next**.

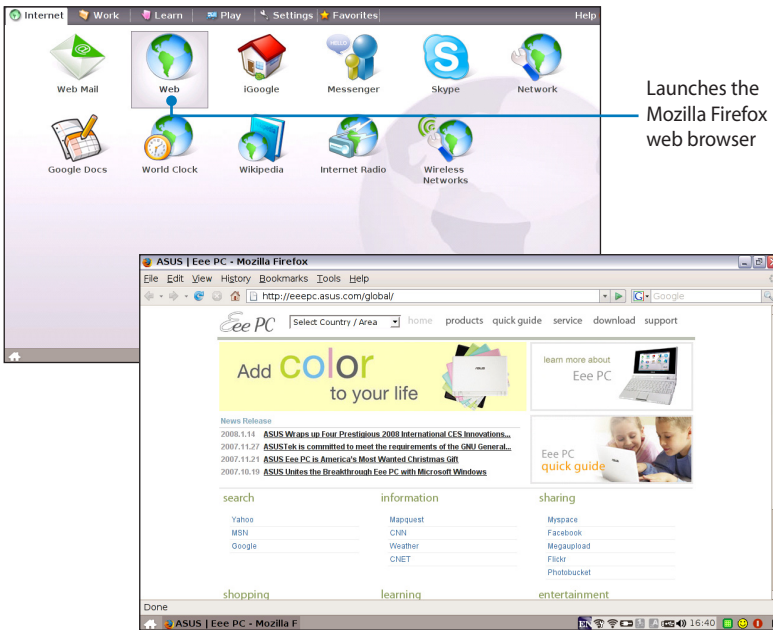


9. Click **Finish** to apply the settings or click **Back** to make changes.



## Browsing web pages

After you finish the network setup, click **Web** from the Internet tab to launch the Mozilla Firefox web browser and start enjoying net surfing.



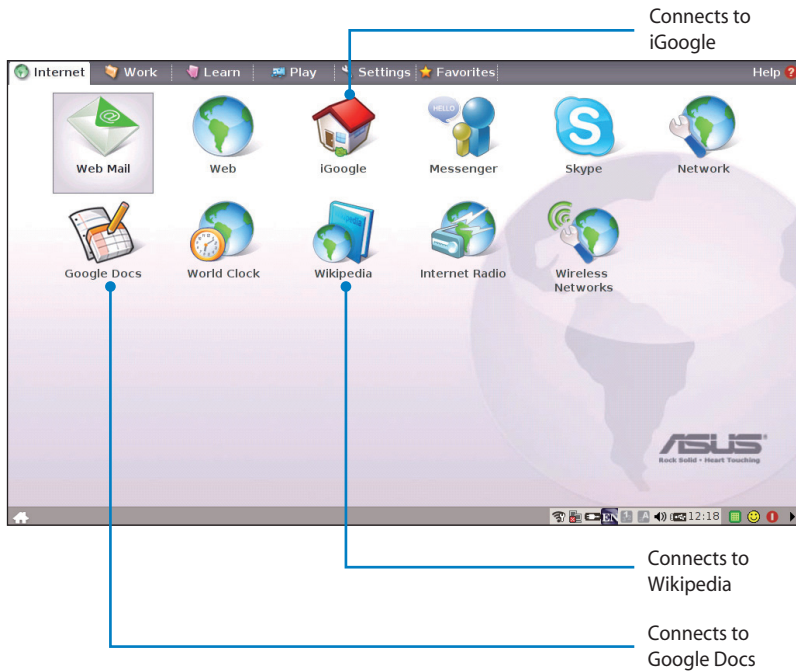
Visit our Eee PC homepage (<http://eeepc.asus.com>) to obtain the latest information and register at <http://vip.asus.com> for full service of your Eee PC.



If you think the browser font size too small to read, go to **View > Text Size** to adjust.

## Enjoying free resources

Eee PC thoughtfully builds several resources shortcuts, including **iGoogle**, **Google Docs**, and **Wikipedia**. Click an item and enjoy a charge-free service through Mozilla Firefox web browser.



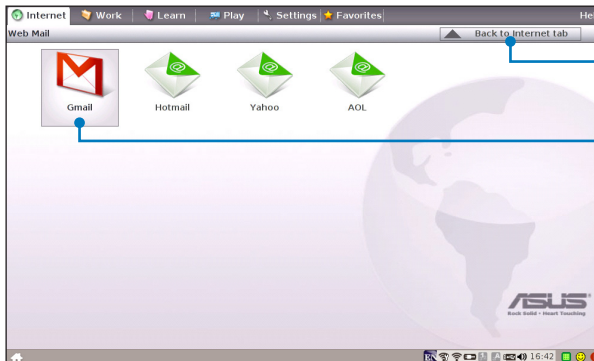
## Accessing E-mail

Select **Web Mail** to display the webmail accesses, including Gmail, Hotmail, Yahoo Mail, and AOL Mail.



Opens the built-in webmail list

Select your e-mail service provider. If you do not use any of the displayed e-mail provider, click the **Back to Internet tab** button and select **Web** to log onto your own e-mail account.



Click to return to the Internet tab

Click to link to the webmail homepage