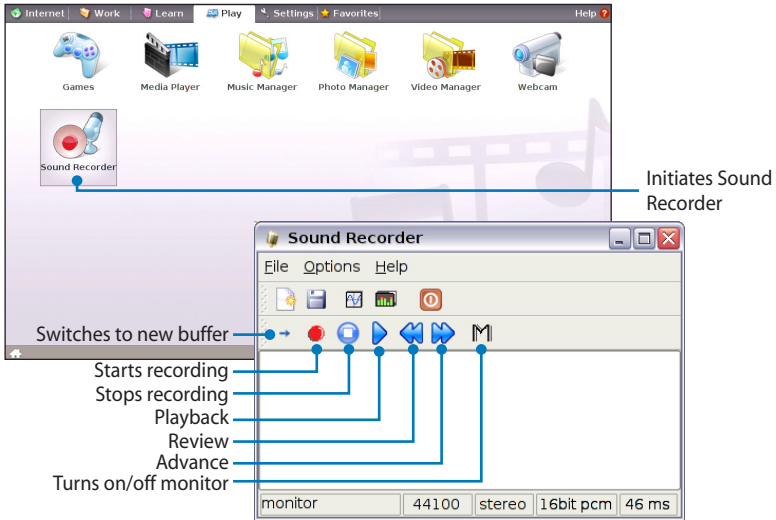


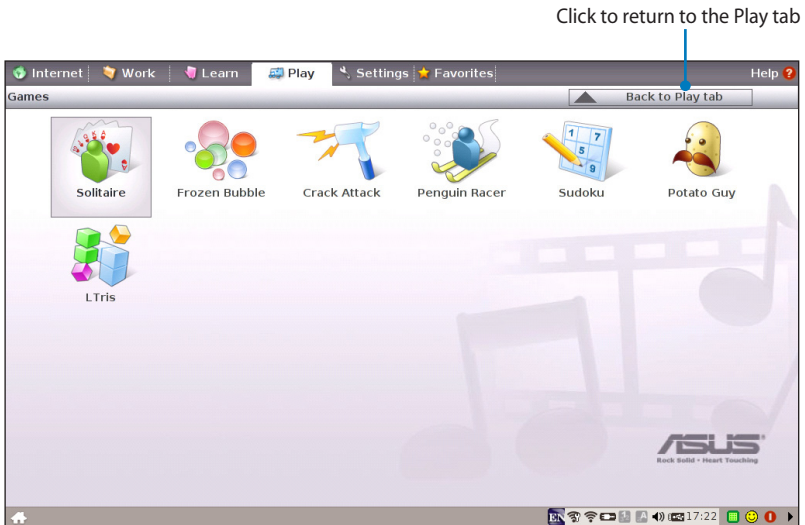
Sound Recorder

Allows you to record a sound clip.



Games

Select an available game and have fun.

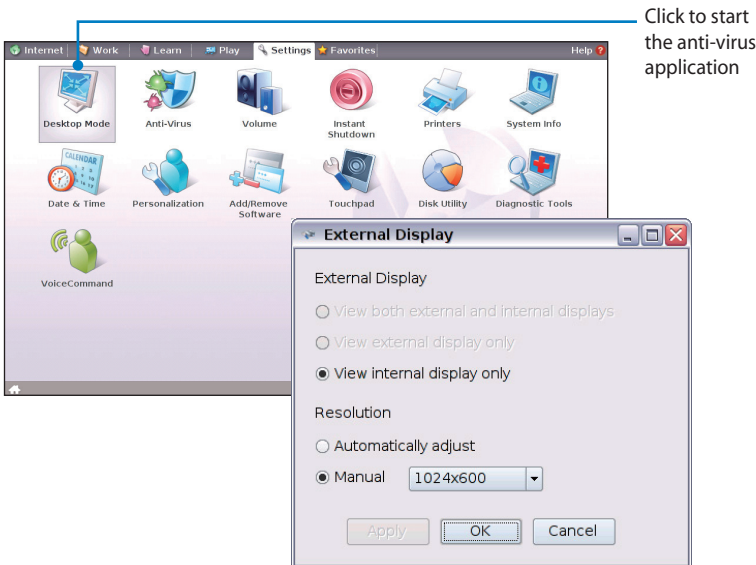


Settings

Desktop Mode

The **Desktop Mode** allows you to select the display mode and adjust your Eee PC display resolution.

You can use both external and internal displays, external display only or internal display only. If an external display is not connected, the first two options will be grayed out. You can also manually adjust the display resolution or set it automatically adjust.




If you set your display resolution to 600x480 or below, use the touchpad to scroll up and down the screen.



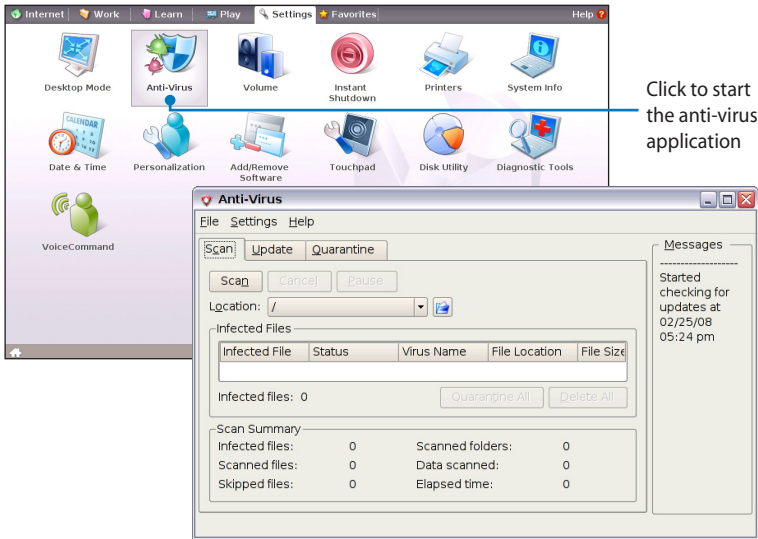
Connect an external monitor before booting up the Eee PC.



If you have installed Windows XP to your Eee PC, right-click the ASUS Eee PC Utility icon  in the Notification area to adjust the display resolution.

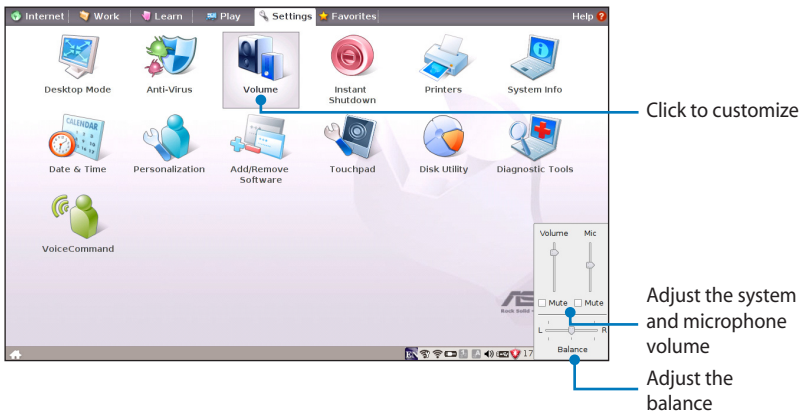
Anti-Virus

From the **Settings** tab, select **Anti-Virus** and perform virus scanning to protect your Eee PC.



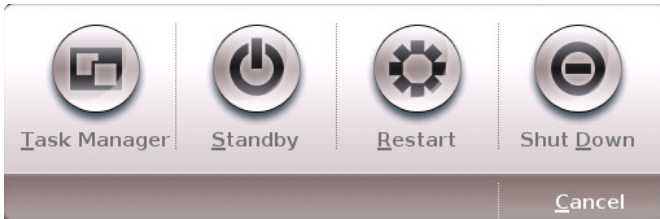
Volume

Click the speakers icon to open the control panel. Adjust the system volume and balance by moving the sliders.



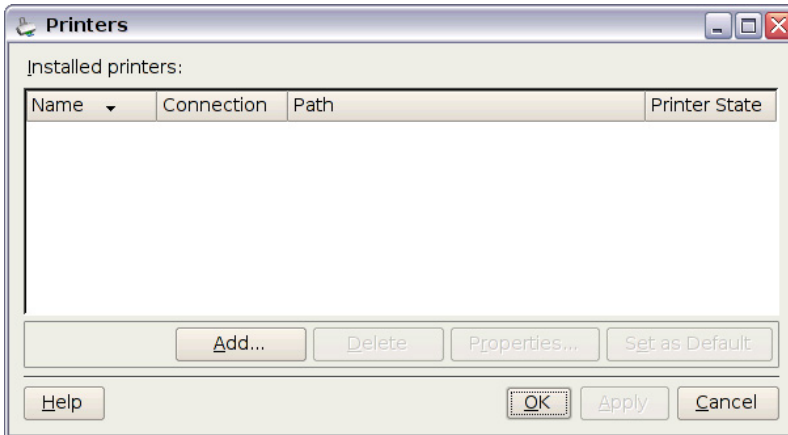
Instant Shutdown

Click **Instant Shutdown** and select an action from the dialog box shown below. You can activate the task manager, put the system in standby, restart, or shut down the system.



Printers

To setup your printer, double-click **Printers** and press **Add** to add a new printer. The installed printers display in the window.



Refer to the QVL in Appendix or visit our website for the latest qualified vendor for the printers.

System Info

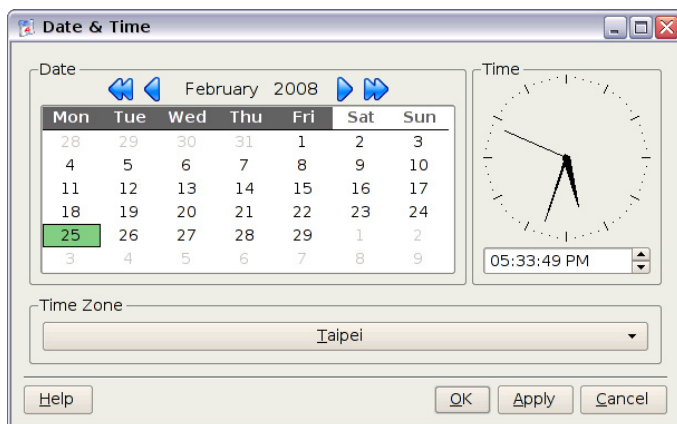
This option displays the system information of your Eee PC.



The displayed system information differs depending on model.

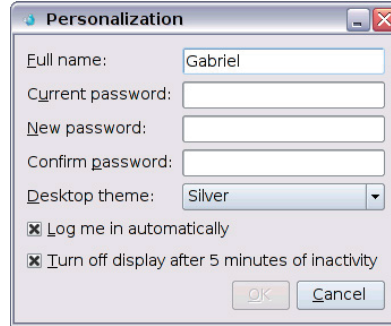
Date & Time

Adjusts the system date and time of your Eee PC.



Personalization

Select **Personalization** to renew your information or change your preferences.



Add/Remove Software

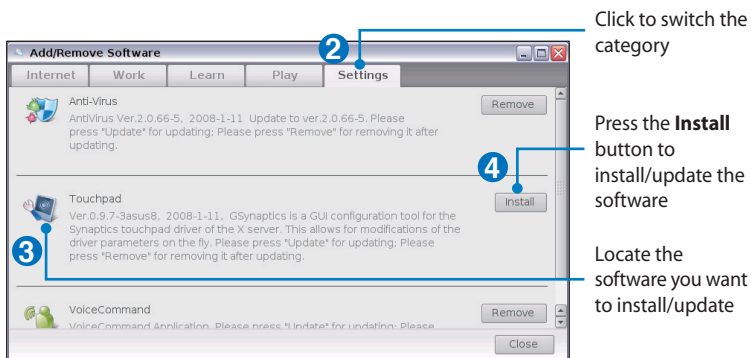
You can download and install software from our server with network access. Follow the instructions below to install software. You can remove the software you install from our server later when they are no longer needed.



Removing the pre-installed software is not allowed.

To install new software or update the existing software:

1. Make sure you have connected to network.
2. Click the tab on the top to switch the category and the screen will display the available software on the server.
3. Locate the software you want to install/update.
4. Click the **Install** button to install/update the selected software.

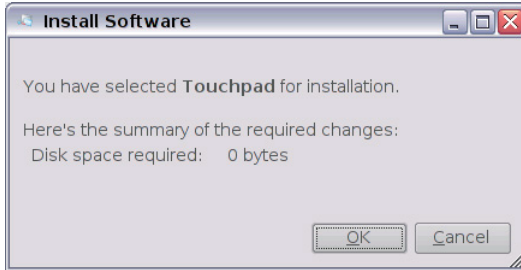


Click to switch the category

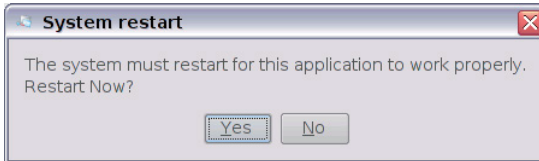
Press the **Install** button to install/update the software

Locate the software you want to install/update

5. Click **OK** to confirm the installation.



6. Your Eee PC starts the download and installs/updates the selected software from the server.
7. Click **Yes** to restart the system for the installed/updated application to work properly.



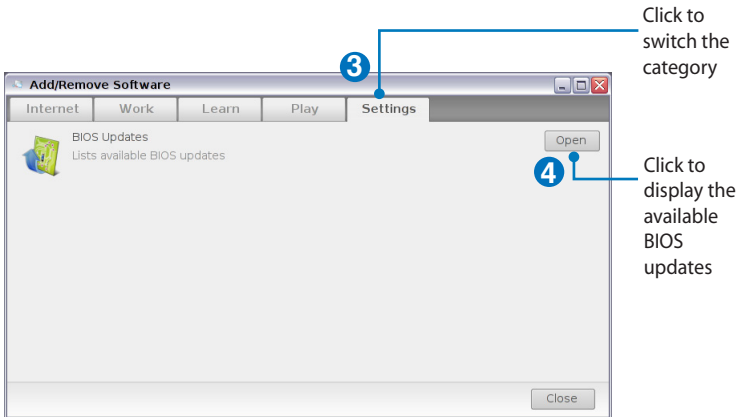
BIOS update

To update the BIOS:

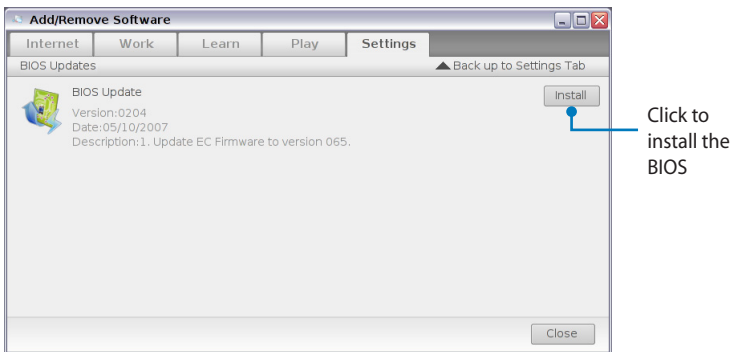


DO NOT shut down or reset the system or unplug the power cord while updating the BIOS! Doing so would cause the system boot failure!

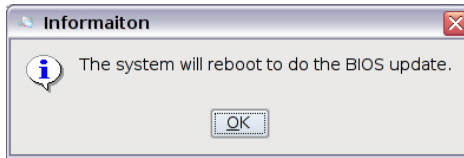
1. Ensure you are connected to a network.
2. Go to **Settings > Add/Remove Software**.
3. Click the **Settings** tab on the top to switch the category.
4. Click the **Open** button in BIOS Updates



5. Locate the latest BIOS and click the **Install** button to update the BIOS.

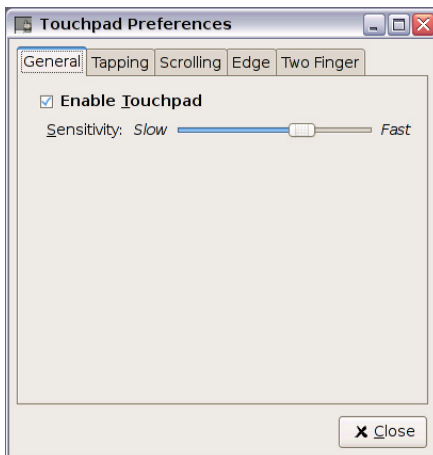


6. Click **OK** to reboot and update the BIOS.



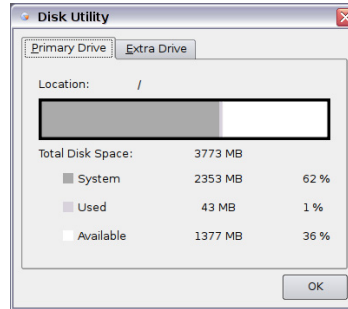
Touchpad

Edit your touchpad preferences by clicking **Touchpad**. You can adjust all touchpad settings.



Disk Utility

Selecting **Disk Utility** allows you to check your Eee PC SSD condition including total disk space, the used space, and the remaining space. Click the tabs to switch the displayed disk drive.



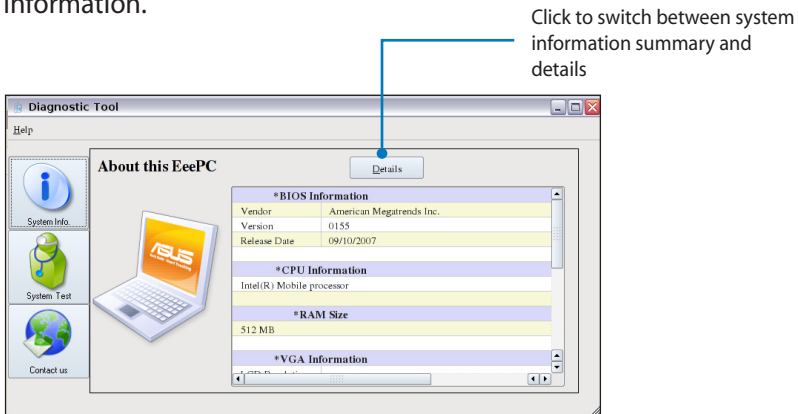
- Data in My Documents is stored in the Primary Drive and files saved to My Documents 2 are located in the Extra Drive.
- Extra Drive may not be available for all Eee PC models.
- The disk space varies depending on model.

Diagnostic Tools

The **Diagnostic Tool** helps you with easy trouble-shooting.

System Info.

Click the **System Info.** button on the left to display the system information.



The system information varies depending on model.