

# Eee Pad User Manual

## ME370T

**ASUS is devoted to creating environment-friendly products/packagings to safeguard consumers' health while minimizing the impact on the environment. The reduction of the number of the manual pages complies with the reduction of carbon emission.**

**For the detailed user manual and related information, refer to the user manual included in the device or visit the ASUS Support Site at <http://support.asus.com> or the Eee Pad website at <http://eee.asus.com/eeepad> for updated information.**

## Charging Your Batteries

If you intend to use battery power, be sure to fully charge your battery pack before going on long trips. Remember that the power adapter charges the battery pack as long as it is plugged into the computer and an AC power source. Be aware that it takes much longer to charge the battery pack when the Eee Pad is in use.

Remember to fully charge the battery (8 hours or more) before first use and whenever it is depleted to prolong battery life. The battery reaches its maximum capacity after a few full charging and discharging cycles.

## Airplane Precautions



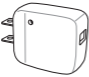


Ask an airline personnel if you want to use your Eee Pad onboard an aircraft. Most airlines have restrictions for using electronic devices. Most airlines allow electronic use only between and not during takeoffs and landings.



There are three main types of airport security devices: X-ray machines (used on items placed on conveyor belts), magnetic detectors (used on people walking through security checks), and magnetic wands (hand-held devices used on people or individual items). You can send your Eee Pad through airport X-ray machines. But do not send your Eee Pad through airport magnetic detectors or expose it to magnetic wands.

---

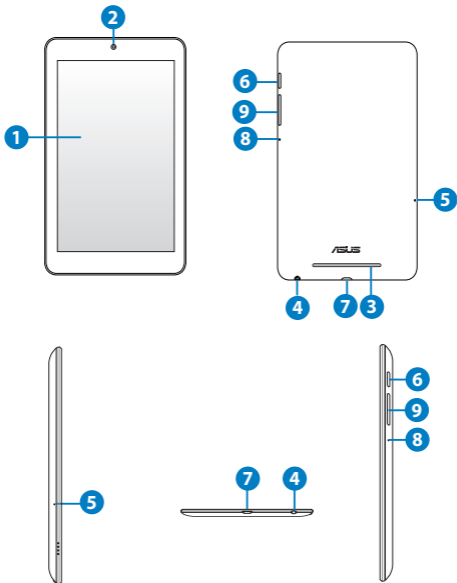
## Package contents

	
Eee Pad	Micro USB Cable
	
USB Charging Unit	Warranty Card
	
User Manual	



- If any of the items is damaged or missing, contact your retailer.
- The bundled power plug varies with country or region.

## Your Eee Pad



- 
- 1 Touch screen panel**  
The touch screen panel allows you to operate your Eee Pad using the stylus or touch gestures.

---

  - 2 Built-in front camera**  
Use the built-in camera for picture taking, video recording, video conferencing, and other interactive applications.

---

  - 3 Audio speaker system**  
Your Eee Pad is equipped with a built-in high quality stereo speaker. Audio features are software controlled.

---

  - 4 Audio jack**  
The stereo combo jack (3.5mm) connects the Eee Pad's audio out signal to amplified speakers or headphones. Using this jack automatically disables the built-in speaker.

---

  - 5 Built-in side microphone**  
The built-in mono microphone can be used for video conferencing, voice narrations, or simple audio recordings.
-

---

6

### Power button

Press and hold the Power button for four seconds to power on your Eee Pad.

When your Eee Pad is powered on, press the Power button to put the Eee Pad into sleep mode or wake it up from sleep mode.

If the system becomes unresponsive, press and hold the power switch for at least eight seconds to force the Eee Pad to shut down.

Press the Power button for four seconds and when prompted, tap **OK** to shut down your Eee Pad.



Forcing the system to shut down may result in data loss. Please ensure that you back up all your important data regularly.

---

---

7

### Micro USB port (2.0)

The Micro USB (Universal Serial Bus) port allows you to charge the battery of your Eee Pad using the USB charger or transfer data from or to your computer.

**Charging via USB:** If you connect your Eee Pad to the USB port on your computer, your Eee Pad will be charged only when it is in sleep mode (screen off) or powered off.

---

---

8

**Reset button**

Using a paper clip, press this button to reset the system to its factory default settings.

---

9

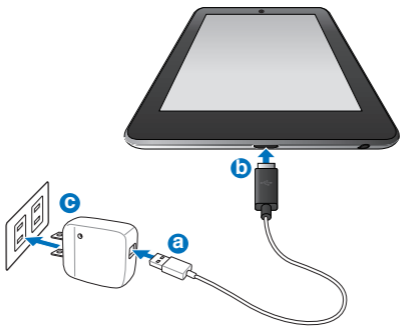
**Volume key**

Press this button to increase or decrease the system volume.

---

## Connecting to the power adapter

Connect the power adapter into the Eee Pad and to a power outlet.







- Use only the power adapter that comes with your device. Using a different power adapter may damage your device.
  - Please peel the protective film off from the plug, USB charging unit, and USB cable before charging the Eee Pad to prevent risk or injury.
  - Using the bundled power adapter and USB cable to connect your Eee Pad to a power outlet is the best way to charge the Eee Pad.
  - The input voltage range between the wall outlet and this adapter is AC 100V–240V, and the output voltage of this adapter is DC 5V, 2A.
- 



- To prolong battery life, fully charge the battery for up to eight (8) hours when using the Eee Pad for the first time and whenever the battery power is fully depleted.
  - Your Eee Pad can be charged via the USB port on the computer only when it is in sleep mode (screen off) or powered off.
  - Charging through the USB port may take longer time to complete.
  - If your computer does not provide enough power for charging your Eee Pad, charge your Eee Pad via the power outlet instead.
-

## Setting up your Google account

Use your Google account to fully enjoy your Eee Pad's Android features such as GTalk, Gmail, Navigation, Android Market, and Maps.

If you have not set up your Google account the first time you turned on your Eee Pad, follow these steps to set up your Google account:

1. From the upper right corner of the Home screen, tap **Apps**.
2. Tap **Settings** > Accounts & sync > **Add account**.
3. Tap **Google accounts**.
4. Key in your e-mail address and password, then tap **Sign in**. Wait for a few minutes until your Eee Pad connects to the Google server.



If you do not have an existing Google account, create one on the Google website at [\*\*http://mail.google.com\*\*](http://mail.google.com)

---

# Copyright Information

No part of this manual, including the products and software described in it, may be reproduced, transmitted, transcribed, stored in a retrieval system, or translated into any language in any form or by any means, except documentation kept by the purchaser for backup purposes, without the express written permission of ASUSTeK COMPUTER INC. ("ASUS").

ASUS and Eee Pad logo are trademarks of ASUSTek Computer Inc.

Information in this document is subject to change without notice.

**Copyright © 2012 ASUSTeK COMPUTER INC. All Rights Reserved.**

<b>Manufacturer</b>	ASUSTek COMPUTER INC.
<b>Address, City</b>	No. 150, LI-TE RD., PEITOU, TAIPEI 112, TAIWAN R.O.C
<b>Country</b>	TAIWAN
<b>Authorized Representative in Europe</b>	ASUS COMPUTER GmbH
<b>Address, City</b>	HARKORT STR. 21-23, 40880 RATINGEN
<b>Country</b>	GERMANY

## **Limitation of Liability**

Circumstances may arise where because of a default on ASUS' part or other liability, you are entitled to recover damages from ASUS. In each such instance, regardless of the basis on which you are entitled to claim damages from ASUS, ASUS is liable for no more than damages for bodily injury (including death) and damage to real property and tangible personal property; or any other actual and direct damages resulted from omission or failure of performing legal duties under this Warranty Statement, up to the listed contract price of each product.

ASUS will only be responsible for or indemnify you for loss, damages or claims based in contract, tort or infringement under this Warranty Statement.

This limit also applies to ASUS' suppliers and its reseller. It is the maximum for which ASUS, its suppliers, and your reseller are collectively responsible.

**UNDER NO CIRCUMSTANCES IS ASUS LIABLE FOR ANY OF THE FOLLOWING: (1) THIRD-PARTY CLAIMS AGAINST YOU FOR DAMAGES; (2) LOSS OF, OR DAMAGE TO, YOUR RECORDS OR DATA; OR (3) SPECIAL, INCIDENTAL, OR INDIRECT DAMAGES OR FOR ANY ECONOMIC CONSEQUENTIAL DAMAGES (INCLUDING LOST PROFITS OR SAVINGS), EVEN IF ASUS, ITS SUPPLIERS OR YOUR RESELLER IS INFORMED OF THEIR POSSIBILITY.**

## CE Mark Warning



### **CE marking for devices without wireless LAN/ Bluetooth**

The shipped version of this device complies with the requirements of the EEC directives 2004/108/EC "Electromagnetic compatibility" and 2006/95/EC "Low voltage directive".



### **CE marking for devices with wireless LAN/ Bluetooth**

This equipment complies with the requirements of Directive 1999/5/EC of the European Parliament and Commission from 9 March, 1999 governing Radio and Telecommunications Equipment and mutual recognition of conformity.

## **Power Safety Requirement**

Products with electrical current ratings up to 6A and weighing more than 3Kg must use approved power cords greater than or equal to: H05VV-F, 3G, 0.75mm<sup>2</sup> or H05VV-F, 2G, 0.75mm<sup>2</sup>.

## ASUS Recycling/Takeback Services

ASUS recycling and takeback programs come from our commitment to the highest standards for protecting our environment. We believe in providing solutions for you to be able to responsibly recycle our products, batteries, other components as well as the packaging materials. Please go to <http://csr.asus.com/english/Takeback.htm> for detailed recycling information in different regions.

---



Risk of explosion if battery is replaced by an incorrect type. Dispose of used batteries according to the instructions.

---



DO NOT throw the battery in municipal waste. The symbol of the crossed out wheeled bin indicates that the battery should not be placed in municipal waste.

---



DO NOT throw the Eee Pad in municipal waste. This product has been designed to enable proper reuse of parts and recycling. The symbol of the crossed out wheeled bin indicates that the product (electrical, electronic equipment and mercury-containing button cell battery) should not be placed in municipal waste. Check local regulations for disposal of electronic products.

---



**SAFE TEMP:** This Eee Pad should only be used in environments with ambient temperatures between 0 °C (32°F) and 35°C (95°F).

---

# Declarations and Safety Statements

## Federal Communications Commission Statement

This device complies with part 15 of the FCC Rules. Operation is subject to the following two conditions: (1) This device may not cause harmful interference, and (2) this device must accept any interference received, including interference that may cause undesired operation.

This device has been tested and found to comply with the limits for a Class B digital device, pursuant to Part 15 of the FCC Rules. These limits are designed to provide reasonable protection against harmful interference in a residential installation. This equipment generates, uses and can radiate radio frequency energy and, if not installed and used in accordance with the instructions, may cause harmful interference to radio communications. However, there is no guarantee that interference will not occur in a particular installation. If this equipment does cause harmful interference to radio or television reception, which can be determined by turning the equipment off and on, the user is encouraged to try to correct the interference by one or more of the following measures:

- Reorient or relocate the receiving antenna.
  - Increase the separation between the equipment and receiver.
  - Connect the equipment into an outlet on a circuit different from that to which the receiver is connected.
  - Consult the dealer or an experienced radio/TV technician for help.
- Changes or modifications not expressly approved by the party responsible for compliance could void the user's authority to operate the equipment.

The antenna(s) used for this transmitter must not be co-located or operating in conjunction with any other antenna or transmitter.

## **RF Exposure Information (SAR)**

This device meets the government's requirements for exposure to radio waves. This device is designed and manufactured not to exceed the emission limits for exposure to radio frequency (RF) energy set by the Federal Communications Commission of the U.S. Government.

The exposure standard employs a unit of measurement known as the Specific Absorption Rate, or SAR. The SAR limit set by the FCC is 1.6W/kg. Tests for SAR are conducted using standard operating positions accepted by the FCC with the EUT transmitting at the specified power level in different channels. The highest SAR value for the device as reported to the FCC is 1.17 W/kg when placed next to the body.

The FCC has granted an Equipment Authorization for this device with all reported SAR levels evaluated as in compliance with the FCC RF exposure guidelines. SAR information on this device is on file with the FCC and can be found under the Display Grant section of [www.fcc.gov/oet/ea/fccid](http://www.fcc.gov/oet/ea/fccid) after searching on FCC ID: MSQME370T.



This device is in compliance with SAR for general population / uncontrolled exposure limits in ANSI/IEEE C95.1-1999 and had been tested in accordance with the measurement methods and procedures specified in OET Bulletin 65 Supplement C.

## **IC Regulations**

This device complies with Industry Canada licence-exempt RSS standard(s). Operation is subject to the following two conditions: (1) this device may not cause interference, and (2) this device must accept any interference, including interference that may cause undesired operation of the device.

This Class B digital apparatus complies with Canadian ICES-003.

Cet appareil numérique de la classe B est conforme à la norme NMB-003 du Canada.

This Category II radiocommunication device complies with Industry Canada Standard RSS-310.

Ce dispositif de radiocommunication de catégorie II respecte la norme CNR-310 d'Industrie Canada.

## **IC Radiation Exposure Statement**

This EUT is in compliance with SAR for general population/ uncontrolled exposure limits in IC RSS-102 and had been tested in accordance with the measurement methods and procedures specified in IEEE 1528. This equipment should be installed and operated with minimum distance 0cm between the radiator & your body.

This device and its antenna(s) must not be co-located or operating in conjunction with any other antenna or transmitter.

The County Code Selection feature is disabled for products marketed in the US/Canada.

For product available in the USA/ Canada markets, only channel 1~11 can be operated. Selection of other channels is not possible.