


Windows Media Player for Pocket PC

Use Microsoft® Windows Media Player for Pocket PC to play digital audio and video files that are stored on your device or on a network. You can use Microsoft® Windows Media Player on your desktop computer to copy digital audio and video to your Pocket PC. You can play Windows® Media and MP3 files on your Pocket PC.

To launch the Windows® Media Player for Pocket PC:

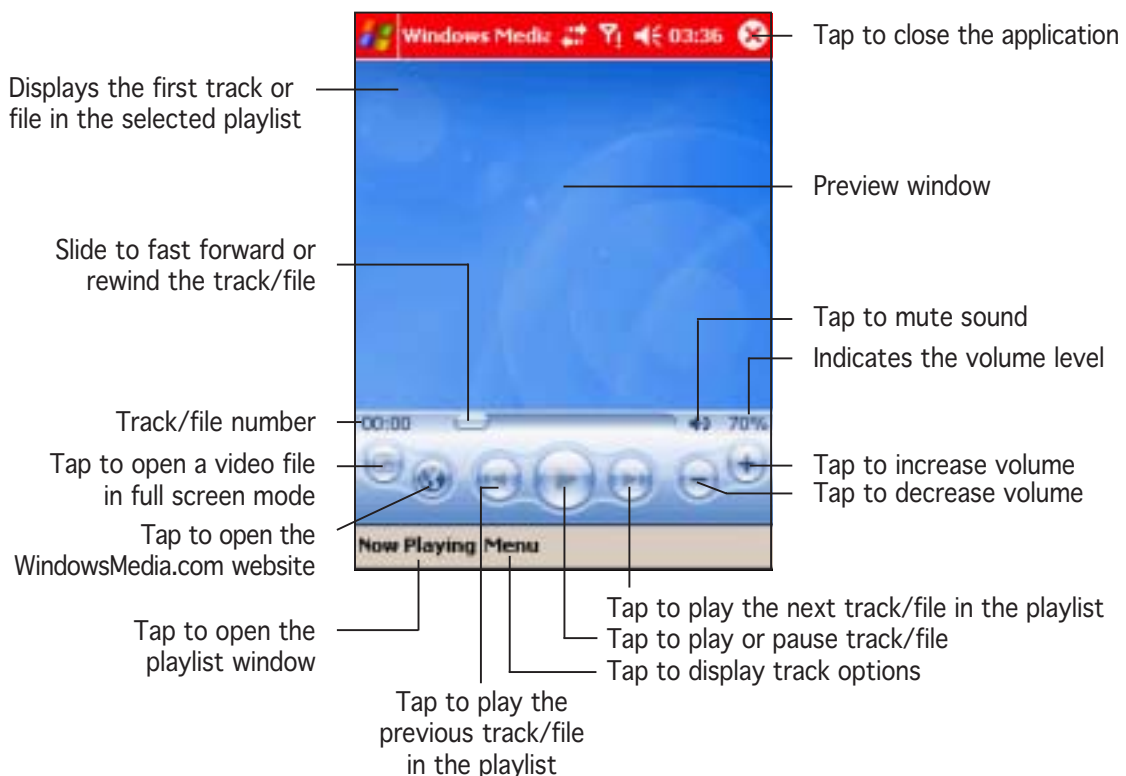
1. Tap .
2. Tap **Programs**.
3. Tap the **Windows Media** icon.

NOTE

For more information on using Windows Media Player for Pocket PC, tap , then tap **Help**.



Windows Media Player main screen



Using the Windows® Media Player library

The Windows® Media Player library stores the links to audio and video files saved in your device, whether these are saved in the device memory or SD card. The library allows you to sort your audio or video files according to criteria such as artist's name, album title, genre, or actor.

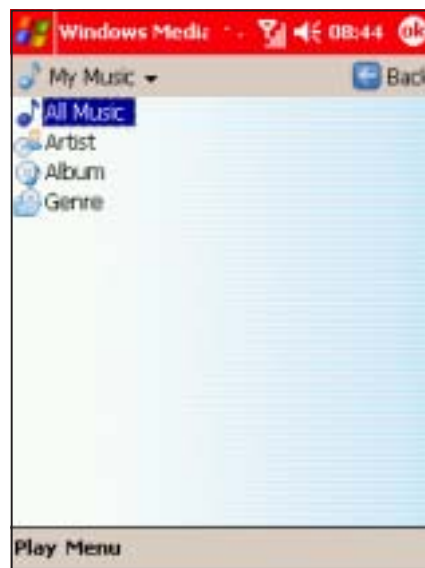
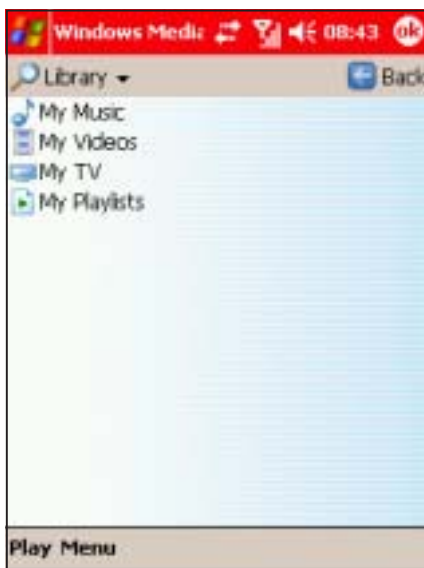
To open an audio/video file from the library:

1. From the Windows® Media Player playback screen, tap **Menu**, then select **Library...**

The **Library** screen appears.

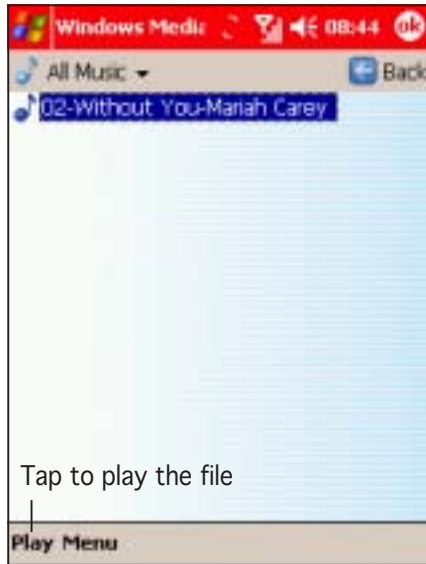


2. Tap on a library (i.e. My Music) to display the library criterion.
3. Tap on a library criteria to display the audio/video file(s) in that criteria, if any.



4. Tap on an audio or video file from the list, then tap the **Play** button.

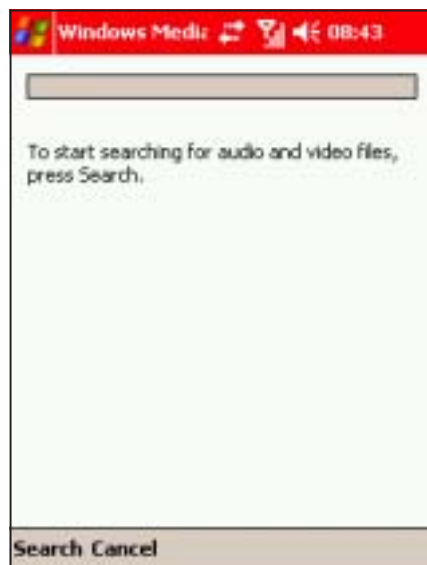
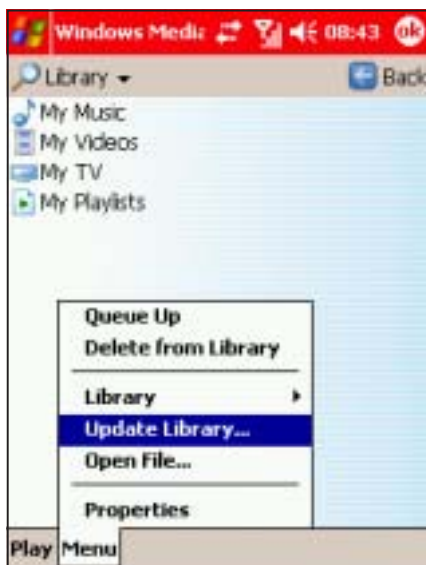
The selected file is played on the playback screen.



To update the library:

Everytime you copy, save, or add an audio or video file to your device memory or SD card, Windows® Media Player automatically updates the library. However, you may need to update the library to make sure that recently added audio/video files are properly linked in the library. To do this:


1. From the **Library** screen, tap **Menu**, then select,
2. Tap **Search** to begin searching newly-added audio/video files.



3. The audio/video files are automatically added to the library. When all files are added, tap **Done** to close the window.



NOTE

For more information on using Windows Media Player for Pocket PC, tap , then tap **Help**.


Voice Commander

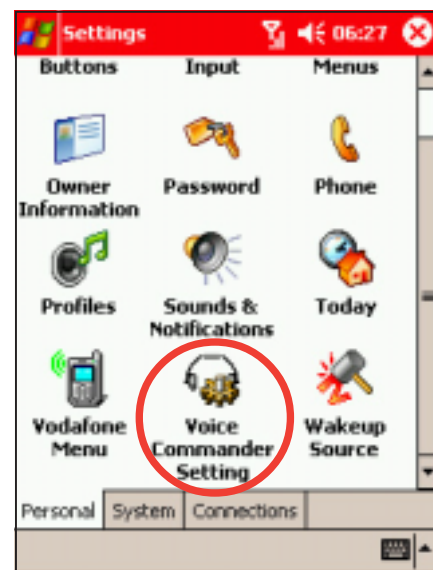
Voice Commander is a speech recognition technology that allows the Pocket PC to launch applications and dial contact numbers via voice commands. Voice Commander is speaker-independent because it automatically creates a default voice tag for each of your contacts and installed applications. You can, however, customise these voice tags using the Voice Commander Settings menu. Press the voice command button at the right side of the Pocket PC to launch the application.

The Voice Commander interprets your voice commands or you can teach it your own voice commands, for example to call “Mum” who has been saved as a contact Anne Smith.

Changing the Voice Commander settings

To launch the Voice Commander settings:

1. Tap .
2. Tap **Settings**.
3. Tap the **Voice Commander Setting** icon.



Creating voice tags

To create a voice tag for a contact:

NOTE An automatic (hidden) voice tag is attached to all contacts and applications. You can listen to these tags by tapping the play button.

1. Select a contact using the stylus.
2. Tap the **Voice Tag** button start recording.



Play button

Voice tag record button

3. Use the headphone or the device microphone to record a voice tag for the selected contact.
4. When prompted, repeat the voice tag.



NOTE

A message appears if the device fails to recognise the voice tag. Try speaking more loudly or move to a quieter location for making the recording.

5. A voice tag icon appears after the contact to indicate that the voice tag has been saved.
6. Follow the same instructions when creating voice tags for other contacts.



Tap to display other tabs

To create a voice tag for an application:

NOTE An automatic (hidden) voice tag is attached to all contacts and applications. You can listen to these tags by tapping the play button.

1. Tap the **Application** tab to display all applications.
2. Select an application using the stylus, then check the box preceding the application to activate voice command.
3. Follow the instructions in the previous section to create a voice tag for an application.



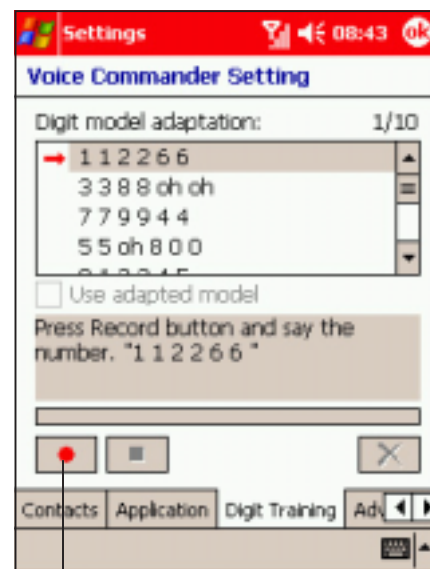
Play button

Voice tag
record button

Digit training

The **Digit Training** tab trains you on pronouncing digits when using the Digit Dial feature of the Voice Commander. The device uses the digit model adaptation recording to recognise your voice tone and pronunciation speed.

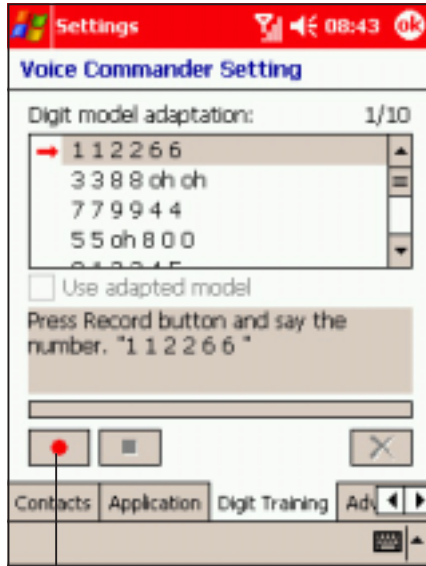
NOTE Since Digit Training serves as the Voice Commander calibration, it is recommended that you record in a quiet environment for accurate recognition.



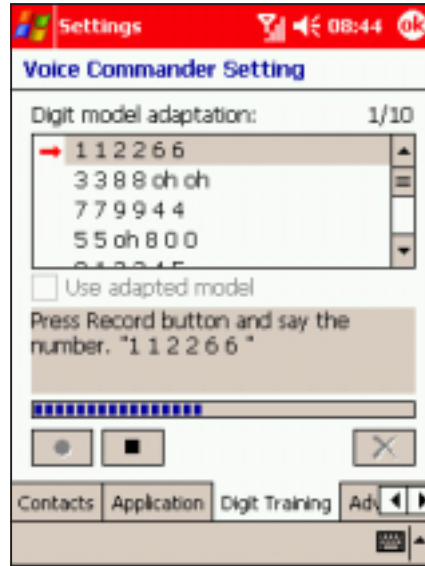
Record button

To teach the device to recognise digits:

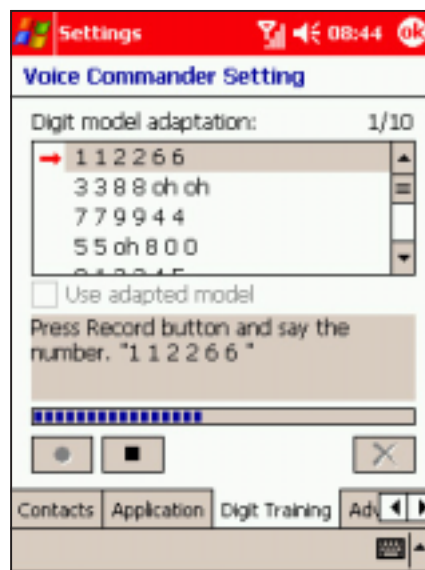
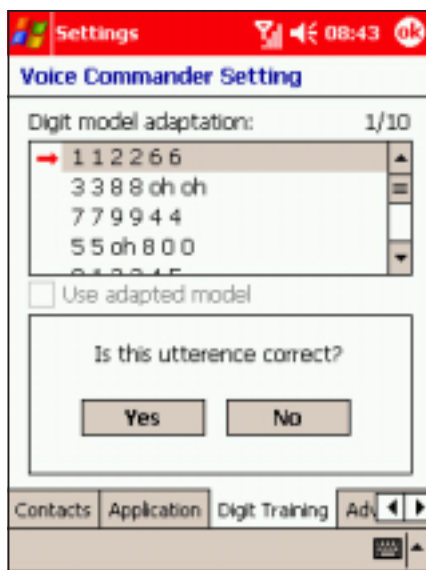
1. Tap the **Digit Training** tab, then tap the record button to start.
2. Say the first number sequence on the **Digit model adaptation** field.



Record button



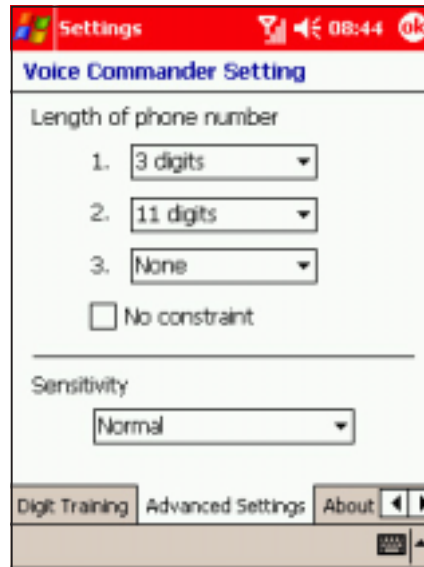
3. The device plays back the recording, then confirms if the recording is correct. Tap **Yes** to record, or **No** to repeat recording.
4. Record the next digit model adaptation until all 10 are recorded. Tap **ok** when done.



Adjusting the advanced settings

To adjust the advanced settings:

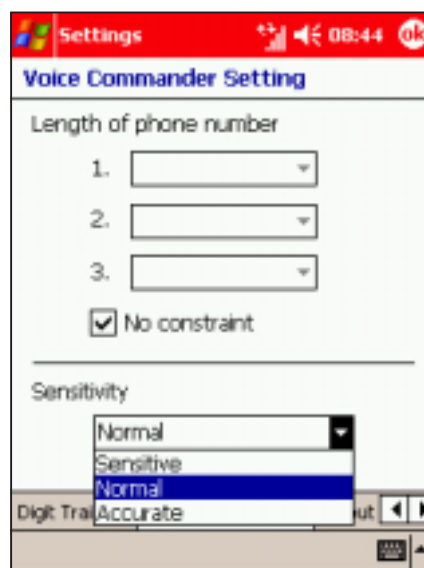
1. Tap the **Advanced Settings** to display the options.



NOTE

By default, the Voice Commander application recognises three phone number lengths based on your settings. Tap the **No constraint** option to support unlimited number of phone number digits.

2. Assign the length of the phone number in the first three fields.
3. Select the voice command sensitivity, then tap **ok** to save your changes.



Using the Voice Commander

To launch and use the Voice Commander:

1. Press the Voice Commander button on the right side of the device to launch the application.




2. Say a voice command providing the relevant details as prompted for between the < >. For example, say “**Call Amanda**”, “**Start Explorer**”.

NOTE

If you use your voice tags, make sure you use the same phrase as recorded. “Call Mandy” would not be recognised if you recorded “Amanda”.



3. When multiple numbers are detected, the application will ask you which number to call. Say “**mobile**” to call the mobile number.
4. The application associated with the command will open. Follow screen instructions to continue.
5. Tap  to close.

IMPORTANT For details on each voice command function and other application features, launch the Voice Commander application, then say “What can I say?” to display the Voice Commander help menu.

Chapter 9

This chapter gives information on using Pocket Internet Explorer and the Mobile Favorites folder.

Using Pocket Internet Explorer

Chapter summary

| | |
|---|------------|
| Introduction | 9-3 |
| Pocket Internet Explorer | 9-3 |
| Using Pocket Internet Explorer | 9-3 |
| Changing View settings | 9-4 |
| Browsing the Internet | 9-5 |
| Mobile Favorites folder | 9-6 |
| Favorite links | 9-6 |
| Mobile Favorites | 9-6 |
| Viewing mobile favourites and channels | 9-8 |
| Adding/Deleting mobile favourites and folders | 9-8 |

Introduction

You can view web or WAP pages by connecting to the Internet via GPRS or your local area network. See Chapter 10 for information on creating a connection.

When connected to an ISP or network, you can also download files and programs from the Internet or intranet.

NOTE Your mobile phone operator may charge for Internet/WAP access. Contact them for details.

You can copy the links to your favourite pages from your desktop computer to the P505 or vice versa using ActiveSync. In Internet Explorer, copy those links you wish to use on the P505 into the Mobile Favourites sub-folder. These links are listed the next time you synchronise the device with the desktop computer.

NOTE Internet surfing through WAP or GPRS may incur charges. Inquire the applicable rate(s) with your phone operator.

Pocket Internet Explorer

You can use Pocket Internet Explorer to browse mobile favourites and channels that have been downloaded to your device without connecting to the Internet. You can also connect to the Internet through an ISP or a network connection to surf the Web.

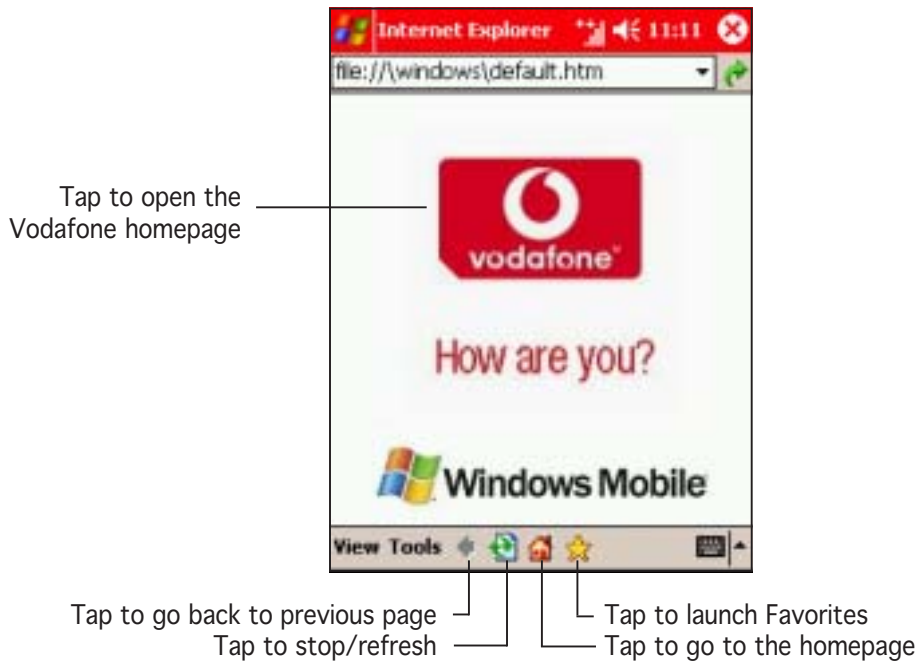
Using Pocket Internet Explorer

To launch Pocket Internet Explorer:

1. Tap , then **Internet Explorer** to display the Pocket Internet Explorer home page.



Pocket Internet Explorer home page



2. Tap the **Home** button to display the Pocket Internet Explorer welcome screen with links to some useful Web sites.
3. Tap any of the Web site buttons to go to a specific site.

Changing View settings

To change View settings:

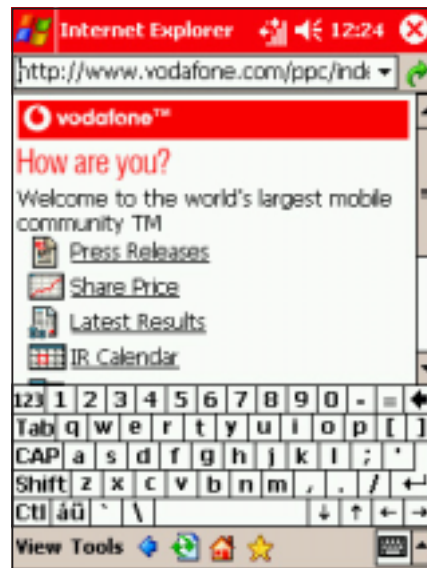
1. Tap **View** to display a pop-up menu.
2. Tap **Address Bar** to display the Web site address bar.
4. Tap and hold **Text Size** to display another pop-up menu with a text size selection. Select your desired text size for the screen.




Browsing the Internet

To browse the Internet:

1. To browse pages you must have a valid connection established. This may be automatic or require configuration. See Chapter 10 for details.
2. Do one of the following to connect and start browsing:
 - Tap the **Favorites** button, then tap the favourite that you wish to view.
 - Tap **View > Address Bar**. Enter the address of the website that you want to visit using the soft keyboard, then tap **Go**.



3. Use the stylus to move the browser slides up/down or left/right to browse the web page.
4. Tap  to close the browser.

Mobile Favorites folder

Only items stored in the Mobile Favorites sub-folder in the Favorites folder in the desktop PC Internet Explorer will be synchronised with your device. The Mobile Favorites folder is automatically created when you installed ActiveSync®.

Favorite links

During synchronisation, any links in your computer's Mobile Favorites folder will be synchronised with Pocket Internet Explorer on your device. Both computers are updated with changes made to either list each time you synchronise. Unless you mark the favourite link as a mobile favourite, only the link will be downloaded to your device, and you will need to connect to your ISP or network to view the content. For more information on synchronisation, see ActiveSync® Help on the desktop computer.

Mobile Favorites

If you are using Microsoft® Internet Explorer 5.0 or later on your desktop computer, you can download mobile favourites to your device. Synchronising mobile favourites downloads Web content to your device so that you can view pages while you are disconnected from your ISP and desktop computer.

Use the Internet Explorer plug-in installed with ActiveSync® to quickly create mobile favourites.

To create a mobile favourite:

1. In Internet Explorer on your desktop computer, click **Tools** then **Create Mobile Favorite**.
2. To change the link name, enter a new name in the **Name** box.
3. Select your desired update schedule in **Update**. This is optional.
4. Click **OK**. Internet Explorer downloads the latest version of the page to your desktop computer.



5. If you want to download the pages that are linked to the mobile favourite you just created, in Internet Explorer on the desktop computer, right-click the mobile favourite, then click **Properties**. In the **Download** tab, specify the number of links deep you want to download. To conserve device memory, go only one level deep.
6. Synchronise your device and your desktop computer. Mobile favourites that are stored in the Mobile Favorites in Internet Explorer are downloaded to your device.



NOTE

- If you did not specify an update schedule in step 3, you will need to manually download content to keep the information updated on your desktop computer and device. Before synchronising with your device, in Internet Explorer on your desktop computer, click **Tools** then **Synchronize**. You will see the last time content was downloaded to the desktop computer, and you can manually download content if needed.
- You can add a button to the Internet Explorer toolbar for creating mobile favourites. In Internet Explorer on your desktop computer, click **View, Toolbars**, and **Customize**.

Saving device memory

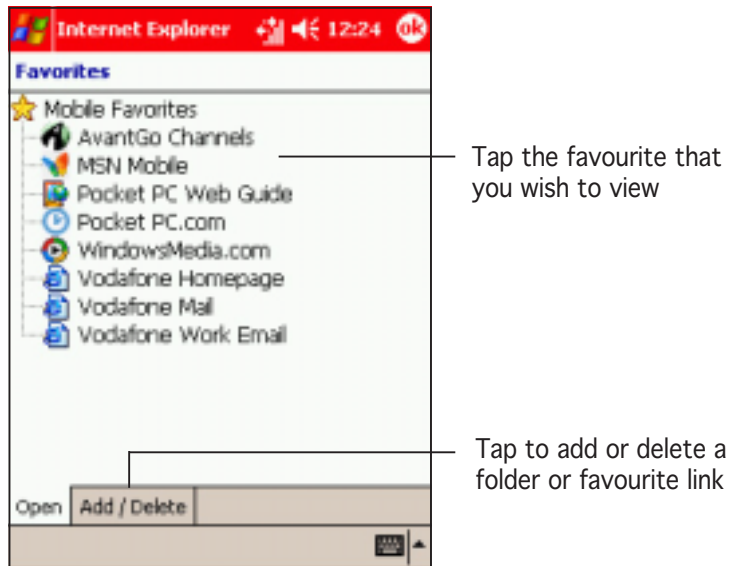
Mobile favourites take up storage memory on your device. To minimise the amount of memory used:

- In the settings for the Favorites information type in ActiveSync® options, turn off pictures and sounds, or stop some mobile favourites from being downloaded to the device. For more information, see ActiveSync® Help.
- Limit the number of downloaded linked pages. In Internet Explorer on your desktop computer, right-click the mobile favourite you want to change, then click **Properties**. In the **Download** tab, specify 0 or 1 for the number of linked pages you want to download.

Viewing mobile favourites and channels

To view mobile favourites and channels:

1. Tap ★ to display your list of favourites.



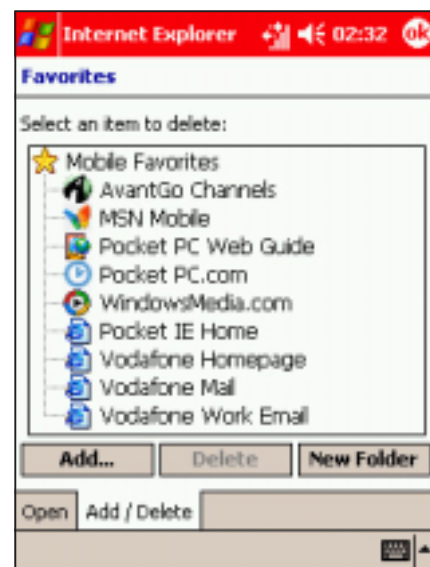
2. Tap a Favorites page that you wish to view.

You will see the page that was downloaded the last time you synchronised with your desktop computer. If the page is not on your device, the favourite is dimmed. You need to synchronise with your desktop computer again to download the page to your device, or connect to the Internet to view the page.

Adding/Deleting mobile favourites and folders

To add a favourite:


1. Tap ★ to display your list of favourites.
2. Tap the **Add/Delete** button to display the **Favorites** screen.
3. Tap the **Add...** button to show the **Add Favorite** screen.

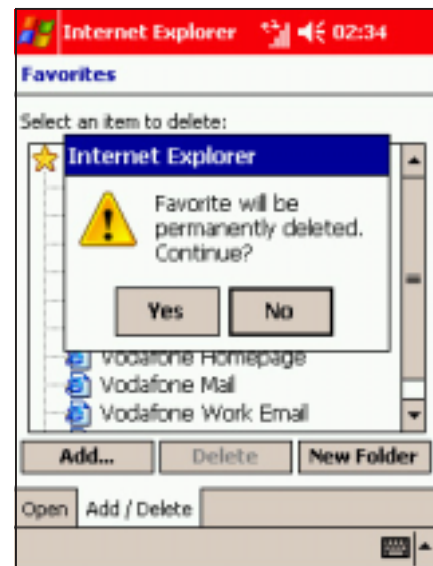
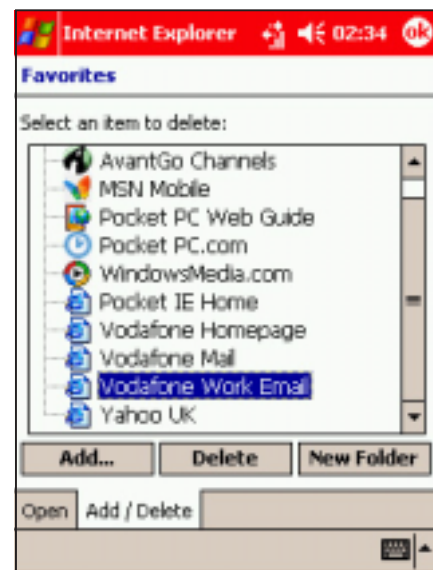


4. Type a name for the favourite that you wish to add in the **Name** field.
5. Type in the URL address in the **Address (URL)** field.
6. Select a folder to place the favourite from the **Create in:** box.
7. Tap **Add** to return to the Favorites screen, which now shows the favourite that you added.




To delete a favourite:

1. Tap  to display your list of favourites.
2. Tap the **Add/Delete** button to display the **Favorites** screen.
3. Select the favourite that you wish to delete, then tap **Delete**.
4. When prompted to permanently delete the favourite, tap **Yes**.




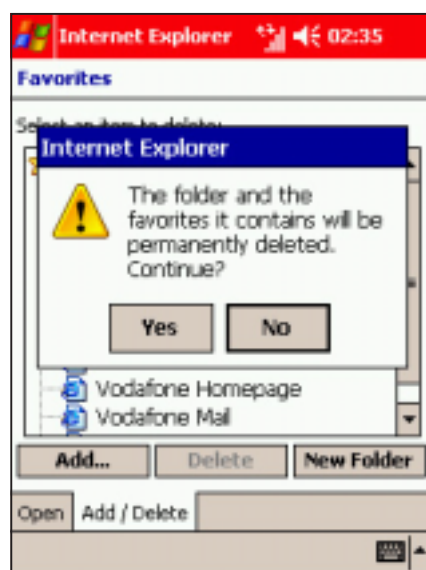
To add a folder:

1. Tap  to display your list of favourites.
2. Tap the **Add/Delete** button to display the **Favorites** screen.
3. Tap the **New Folder** button.
4. Type a name for the folder that you wish to create.
5. Tap **Add** to return to the Favorites screen, which now shows the folder that you added.



To delete a folder:

1. Tap  to display your list of favourites.
2. Tap the **Add/Delete** button to display the **Favorites** screen.
3. Select the folder that you wish to delete, then tap **Delete**.
4. When prompted to permanently delete the folder, tap **Yes**.



Chapter 10

This chapter provides the procedures for connecting to the Internet, intranet, and for transferring data using infrared (IR).

Getting Connected

Chapter summary

- **Introduction** 10-3
- **My ISP connections** 10-4
 - Creating an Internet connection 10-4
- **My Work connections** 10-9
 - Creating a VPN connection 10-10
 - Adjusting the proxy server settings 10-12
 - Network card connections 10-13
- **Set up a WAP gateway** 10-15
- **Using dialing rules** 10-17
- **Ending a connection** 10-18
- **Infrared (IR) connection** 10-18
 - Sending information 10-19
 - Receiving information 10-20

Introduction


The connection settings tell the device how you want it to connect to service/network to browse the Internet, send and receive e-mail, SMS, MMS, etc.

Connections can be made using a **modem**, **wireless network**, or **network (Ethernet) cards**. A modem connection can be used to set up connections with an external modem, or with the mobile phone network using a cellular line (WAP or GPRS).

Your device has two groups of connection settings: **My ISP** and **My Work Network**. My ISP settings are used to connect to the Internet, and My Work Network settings can be used to connect to any private network, such as a corporate network you use at work. Simply fill in the settings and get ready to start connecting. For more information, see the sections “Connect to the Internet” or “Connect to Work.”

You may also establish connection to the Internet wirelessly through another device with infrared (IR) or Bluetooth® features. For more information, see sections “Infrared (IR) connection” or “Bluetooth® connection.”

To view the Connections window:

1. Tap .
2. Tap **Settings**.
3. Tap the **Connections** tab.
4. Tap a connection to use or configure.



My ISP connections

You can connect to the Internet using your Pocket PC cellular line (WAP), GPRS, generic IrDA, or Hayes-compatible modem. Refer to the following sections on how to set up your Internet connection.

Your device is pre-configured to automatically connect to Vodafone's services, provided you have subscription. Contact the operator for details of specific charges and services.

To create a different connection, you need the following information to set up the device.

| Connection | Information required |
|------------------------|--|
| Cellular Line (WAP) | server phone number, user name, password, domain, port settings, TCP/IP settings, specific server addresses |
| Cellular Line (GPRS) | access point name, user name, password, domain, TCP/IP settings, specific server addresses |
| Generic IrDA | server phone number, user name, password, domain, Baud rate, port settings, TCP/IP settings, specific server addresses |
| Hayes-compatible modem | server phone number, user name, password, domain, Baud rate, port settings, TCP/IP settings, specific server addresses |

Creating an Internet connection

To create a Cellular Line (WAP) connection:

1. From the **Connections** tab, tap **Connections**.
2. In My ISP, tap **Add a new modem connection**.



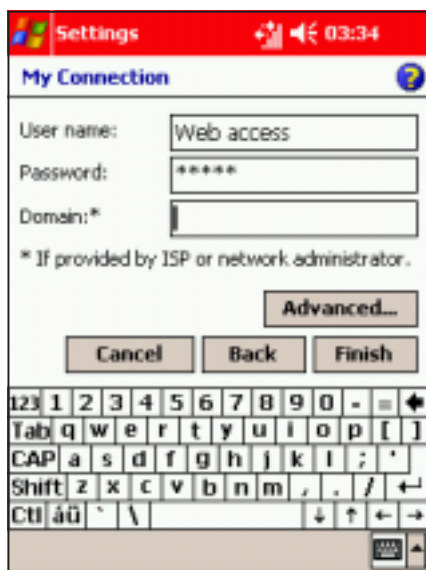
3. Type a name for the connection, then select **Cellular Line** from the modem list. Tap **Next** when finished.



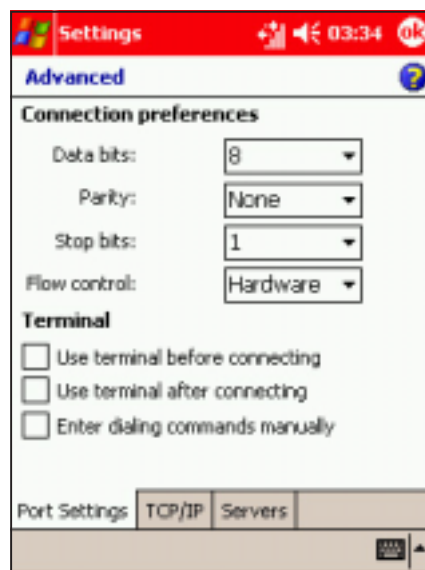
4. Use the soft keyboard to type the number of the phone network server, then tap **Next**.



5. Type the user name, password, and domain for the connection, then tap **Advanced**. Otherwise, tap **Finish** to create the connection.



6. Adjust the **Connection Preferences** and **Terminal** settings from this tab, then tap the **TCP/IP** tab.



- Adjust the TCP/IP settings from this window, then tap the **Servers** tab.



- Adjust the specific server address from this window, then tap **ok**.



- The device creates the connection. To verify, return to the **Connections** main window, then tap **Manage existing connections**.



- The connection appears in the list of network connections. Launch Internet Explorer to test the connection.




To create a Cellular Line (GPRS) connection:

1. Follow steps 1 to 2 of the previous section.
2. Type a name for the connection, then select **Cellular Line (GPRS)** from the modem list. Tap **Next**.
3. Use the soft keyboard to type the GPRS access point name of the phone network server, then tap **Next**.

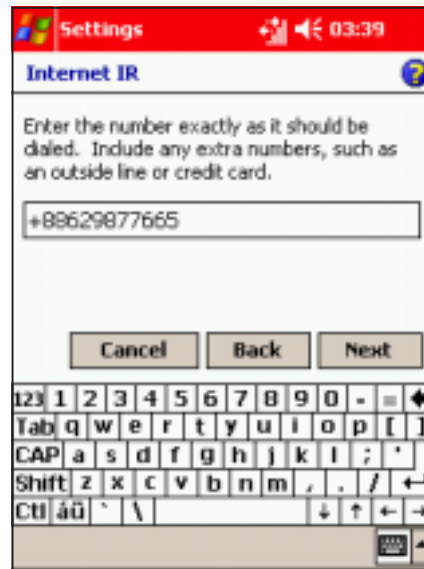


4. Follow steps 5, 7 to 10 of the previous section to create the GPRS connection.


NOTE To view additional information for any screen in the wizard or while changing settings, tap .

To create an IR or Hayes-compatible modem connection:

1. Follow steps 1 to 2 of the section on creating a cellular line (WAP) connection on page 10-4.
2. Type a name for the connection, then select **Generic IrDA** or **Hayes-compatible on COM1**: from the modem list. Tap **Next**.
3. Use the soft keyboard to type the number of phone network server, then tap **Next**.



4. Follow step 5 of the section on creating a cellular line (WAP) connection on page 10-5.
5. Set the **Baud Rate** for the connection using the **General** tab.
6. Follow steps 6 to 10 of the section on creating a cellular line (WAP) connection on page 10-5 to 10-6 to create the connection.

NOTE To view additional information for any screen in the wizard or while changing settings, tap .



My Work connections


Use My Work connections to connect to a Local Area Network (LAN), virtual private network (VPN), and edit the firewall proxy settings. using the device or a network card (Ethernet card). Refer to the following sections on how to set up your work connections.

Before you proceed

Before setting up your Internet connection in the My Work group, obtain the following information from your network administrator.

| Connection | Information required |
|--------------------------------|--|
| Generic IrDA | server phone number, user name, password, domain, Baud rate, port settings, TCP/IP settings, specific server addresses |
| Hayes-compatible modem | server phone number, user name, password, domain, Baud rate, port settings, TCP/IP settings, specific server addresses |
| Virtual Private Network | host name/IP, VPN type, VPN authentication or certificate, user name, password, domain, TCP/IP settings, specific server addresses |

NOTES

- Refer to the previous sections when setting up modem connections in My Work.
- To change modem connection settings in either **My ISP** or **My Work Network**, tap **Manage existing connections**. Select the desired modem connection, tap **Settings**, and follow the instructions on the screen.
- To view additional information for any screen in the wizard or while changing settings, tap .

Creating a VPN connection

To create a Virtual Private Network (VPN) connection:

1. From the **Connections** tab, tap **Connections**.
2. In My Work Network, tap **Add a new VPN server connection**.



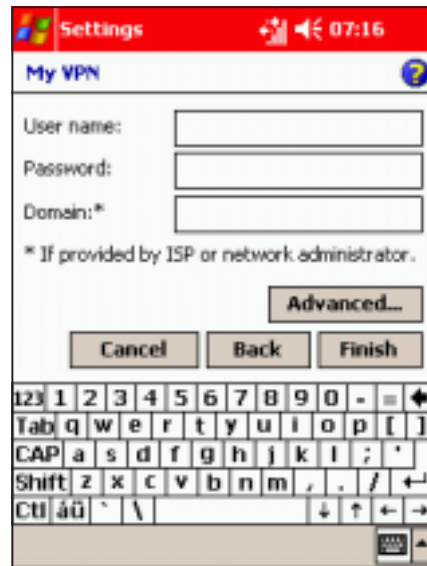
3. Type the VPN name using the soft keyboard.
4. Enter the host name/IP address, then select the VPN type. Tap **Next** when finished.



5. Select the VPN authentication, then tap **Next** to continue.



6. Type the user name, password, and domain for the connection, then tap **Advanced**. Otherwise, tap **Finish** to create the connection.



7. The created VPN network is displayed in the **My Work Network** list. Tap **ok** to close the window.



8. Launch Internet Explorer to test the connection.

NOTE

To view additional information for any screen in the wizard or while changing settings, tap **?**.

Adjusting the proxy server settings

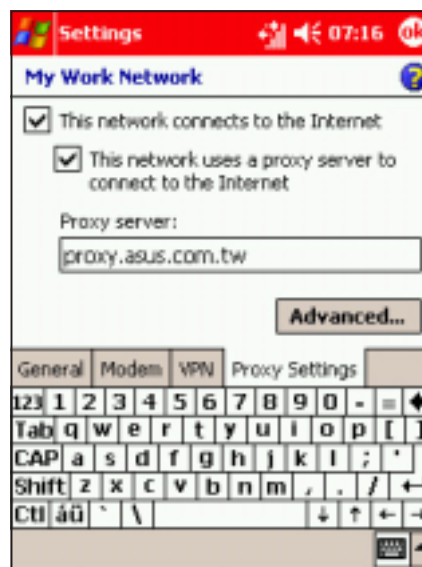
If you are connected to your ISP or private network during synchronization, your mobile device should download the proper proxy settings from your PC. If these settings are not on your PC or need to be changed, ask your ISP or network administrator for the proxy server name, server type, port, type of Socks protocol used, and your user name and password.


To change proxy server settings:

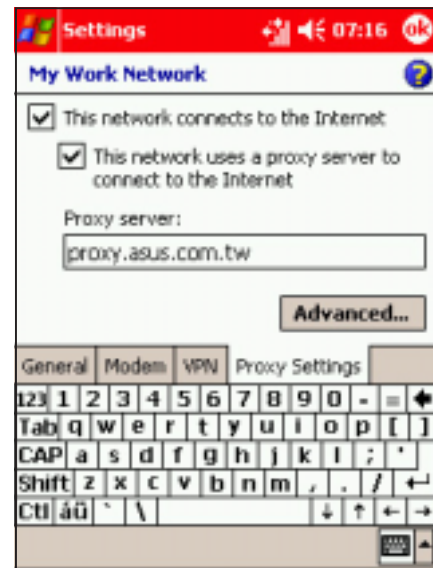
1. From the **Connections** tab, tap **Connections**.
2. Tap **Edit my proxy server**.



3. Select **This network connects to the Internet** and **This network uses a proxy server to connect to the Internet**.
4. In the **Proxy server** box, enter the proxy server name.



5. Tap the **Advanced** button to change the port number, proxy server type, and other advanced proxy settings.
6. Tap  to save your changes.




Network card connections

Use a network (Ethernet) card to connect directly to a network. Once connected, you can view the Internet or intranet, download e-mail or send and receive MMS messages. You do not need to create a new connection on your device. Your network administrator can provide details of the network settings.

IMPORTANT Make sure to purchase and configure a network card that is compatible with your device.

To set up a network card:

1. Obtain the network settings from your network administrator.
2. Insert the network card into your device.
3. The Network Settings window appears the time you insert the card so you can configure it immediately. If it does not appear, or to change the settings later, tap  > **Settings** > **Connections** tab > **Connections** > **Network Cards**.




4. If you need to enter specific server information, tap the appropriate adapter. Most networks use DHCP, so you should not have to change these settings unless your network administrator instructs you otherwise.
5. If necessary, connect the network card to the network by using a network cable. For information, refer to the documentation that came with your network card.
6. To start a connection, insert the network card, and begin using a desired program. For example, switch to **Pocket Internet Explorer** and browse a **Web page**. Your device automatically starts connecting.



If you use your network card with two networks, such as a private network at work and one at home for the Internet, you need to change the network to which the network card connects.

NOTE

- You may need proxy server and VPN connection settings. Inquire the network settings with your network administrator.
 - To view additional information for any screen in the wizard or while changing settings, tap .
-

Set up a WAP gateway

Your device is pre-configured to automatically connect to Vodafone's services, provided you have subscription. Contact the operator for details of specific charges and services.

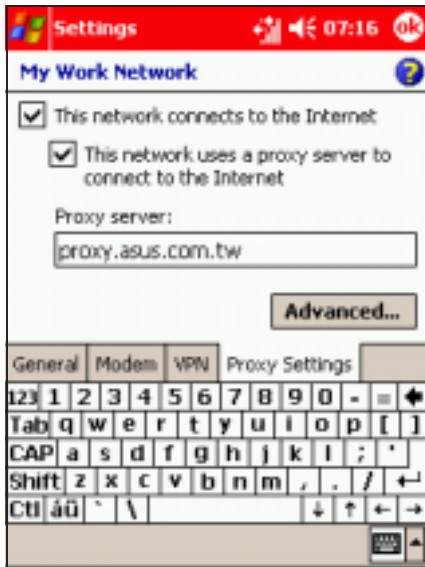
If you lose these automatic settings, and do not want to reset your device completely, then you need the following information to set up the device: ISP server phone number, user name password, WAP gateway server name, and port number.

To access WAP sites through Pocket Internet Explorer:

1. From the **Connections** tab, tap **Connections**.
2. Tap **Edit my proxy server**.



4. Tap the **Advanced** button to access the WAP gateway settings.



5. In the **WAP** box, enter the **WAP gateway server name**, then specify the port number.



NOTE The most common WAP port number is 9201.

6. In the **Secure WAP** box, enter the **Secure WAP gateway server name**, then specify the port number.
7. Tap **ok** to save your changes.



Using dialing rules

Depending upon where you use the P505, you may have to dial additional numbers, for example 0 or 9 to dial out of an exchange, or a particular prefix. The device automatically uses these numbers when the dialing rule is selected. You can create as many dialing locations as you require. Three are already created: Home, Mobile, and Work, edit these to your requirements.

To change the dialing rules:


1. Tap  > **Settings** > **Connections tab** > **Connections** > **Advanced** tab.
2. Tap the **Dialing Rules** button.



3. Tap **Use dialing rules**.
4. Select a location.
 - **Home** - Dials the number as a local call without a number prefix.
 - **Mobile** - Dials the number with the mobile phone operator designated prefix.
 - **Work** - Dials the number as local call with a number prefix.




5. Tap  to save your changes.

NOTE To create a new location, tap New and follow the directions on the screen. To view additional information at any time, tap .

Ending a connection


Use the following methods to end a network connection.

- When connected via modem or VPN, tap  on the navigation bar, then tap **Disconnect**.
- When connected via cable or cradle, detach your device from the cable or cradle.
- When connected via Infrared, move the device away from the other computer or device.
- When connected via a network (Ethernet) card, remove the card from your device.
- When connected via a wireless network, switch off the connection.

Infrared (IR) connection

By default, your device detects incoming infrared (IR) beams and prompts you to accept them. If you do not want your device to detect or receive beams, clear the **Receive all incoming beams** check box.

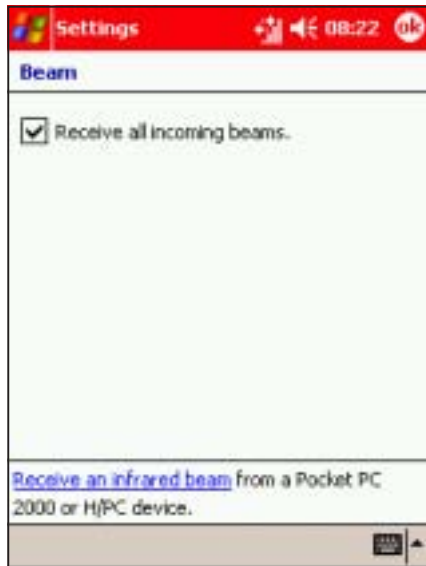
To set the Beam options:

1. Tap , then **Settings**.
2. Tap the **Connections** tab.
3. Tap the **Beam** icon to display the Settings screen.



4. Tap the option **Receive all incoming beams**, then tap the **Receive an infrared beam** link to receive beams from this screen.

The device automatically looks for another device using infrared.

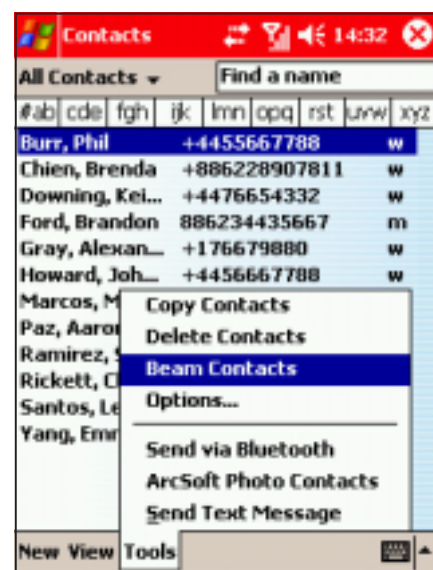


NOTE Turning off the **Receive all incoming beam** options saves battery power.

Sending information

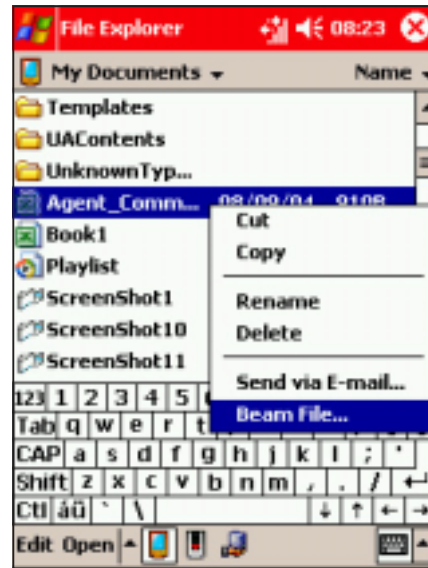
To beam a contact:

1. In **Contacts**, highlight the contact name to beam.
2. Select **Tools > Beam Contacts**.
3. Align the IR ports of the P505 and the device to which you are beaming (the devices should be in close range of each other and have clear line-of-sight).



To beam a file:

1. Go to the program associated with the file you want to transfer, and select it from the list.
2. Align the IR ports of the P505 and the device to which you are beaming (the devices should be in close range of each other and have clear line-of-sight).
3. Tap and hold the item, then tap **Beam File...** on the pop-up menu.



NOTE

You can also send items, but not folders, from File Explorer. Tap and hold the item that you want to send, then tap **Beam File** on the pop-up menu.

Receiving information

To receive information:

1. Align the IR ports of the devices (the devices should be in close range of each other and have clear line-of-sight).
2. Have the owner of the other device send the information to you. Your device automatically receives the information, provided the beaming option is set to receive incoming beams. See previous page for details.

Chapter 11

This chapter provides information on how to use the Pocket PC Bluetooth® feature.

Using Bluetooth®

Chapter summary

- **Introducing Bluetooth®** 11-3
 - Bluetooth icon 11-3
- **Bluetooth settings** 11-4
- **Bluetooth Manager** 11-6
 - Bluetooth connection wizard 11-7
- **Bluetooth® services** 11-8
 - Wireless serial port 11-8
 - Dial-up networking 11-9
 - Send via Bluetooth 11-10
 - Bluetooth Personal Area Network 11-12

Introducing Bluetooth®

Bluetooth® is a short-range wireless communications technology. Devices with Bluetooth® capabilities can exchange information over a distance of about 10 meters (30 feet) without requiring a physical connection.


Unlike infrared, you do not need to line up the devices to exchange information via Bluetooth®. The devices only need to be within a range of about 10 meters. You can even exchange information to a device in a different room, as long as it is within the specified range.


The Bluetooth® technology allows your Pocket PC to:

- Locate other Bluetooth devices within the vicinity
- Discover the services that those devices offer
- Connect to, use, and disconnect from those services
- Enable or disable individual services
- Use security features including authentication, authorisation, and encryption

Bluetooth icon

The Bluetooth icon is located on the lower right corner of the Today screen.

When Bluetooth is enabled (turned ON), the icon is blue , and the Bluetooth LED on the upper left side of the device blinks blue.

When Bluetooth is disabled (turned OFF), the icon has a red X on its lower right corner .

Tapping the icon displays a menu that allows you to:


- turn Bluetooth on or off
- launch the Bluetooth Manager
- change the Bluetooth Settings



Bluetooth icon

Bluetooth settings

To configure the Bluetooth settings:

1. Tap  from the lower right corner of the Today screen to display the Bluetooth menu.
2. Tap **Bluetooth Settings**.
3. Tap one of the tabs at the bottom of the **Bluetooth Settings** window to make your desired changes.



General

Allows you to:

- select the user profile
- see the Bluetooth status (ON/OFF)
- turn Bluetooth ON or OFF
- tap a link to the Bluetooth Manager



Accessibility

Allows you to:

- set the device name
- see the Bluetooth Device Address (BDA)
- select the remote devices you wish to connect
- set whether to allow remote devices to see your device

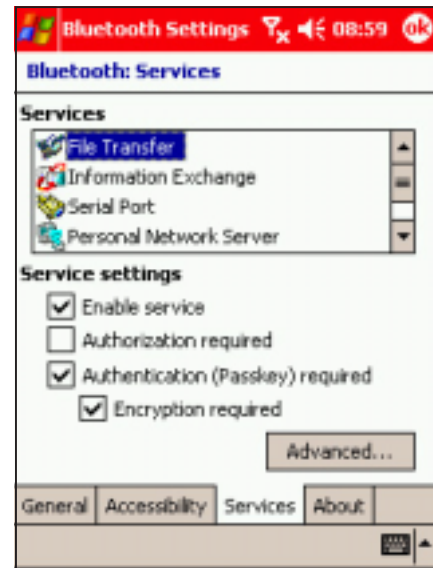


Services

Allows you to:

- enable/disable available Bluetooth services
- change the advanced settings of Bluetooth services
- set authentication and specify encryption settings for Bluetooth services

The available service settings are enabled when you select a Bluetooth service.



Select a service from the list to establish its settings (enabled, authorisation and authentication). Other options can be accessed by tapping on **Advanced** and are described below:

| Bluetooth Service | Description |
|----------------------------------|--|
| File Transfer | Set the highest level directory on your device that remote devices can access. |
| Information Exchange | Set the default business card. |
| Serial Port | Displays the port addresses. This cannot be changed. |
| Personal Network Server | Allows you to customise the service settings for your personal network server. |
| Hands Free | Enable telephone and/or audio profile. |
| Dial-up Networking Server | Allows you to enable and/or authenticate connection to the dial-up network server. |

Bluetooth Manager

The Bluetooth Manager allows you to create, manage, and use Bluetooth® to connect to remote devices.

To launch the Bluetooth Manager:

1. Tap and hold the Bluetooth icon in the Today screen.
2. Tap **Bluetooth Manager**.



3. The **My Shortcuts** screen displays a list of pre-configured connections, if any.



- Tap to make a new connection
- Tap to add or remove paired devices
- Tap to set view options
- Tap to launch the Bluetooth connection wizard


4. Tap the **Active Connections** tab to display the active incoming and outgoing connections.



Bluetooth connection wizard

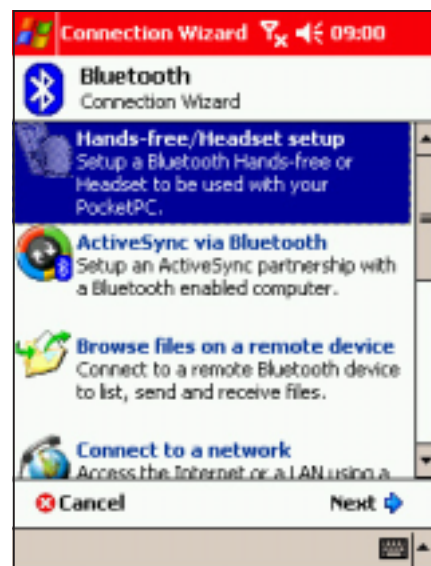
The Bluetooth connection wizard helps you set up connections with remote Bluetooth® devices.

To launch the Bluetooth connection wizard:

1. Tap  from the Bluetooth Manager command bar. The Bluetooth Connection Wizard screen appears.
2. Select a type of connection that you wish set up, then tap **Next**.
Tap **Cancel** to terminate the connection process.

NOTE

Refer to the device online help for other information on Bluetooth® connections.





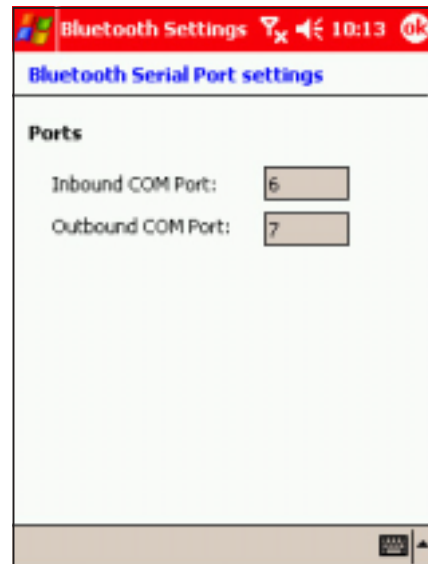
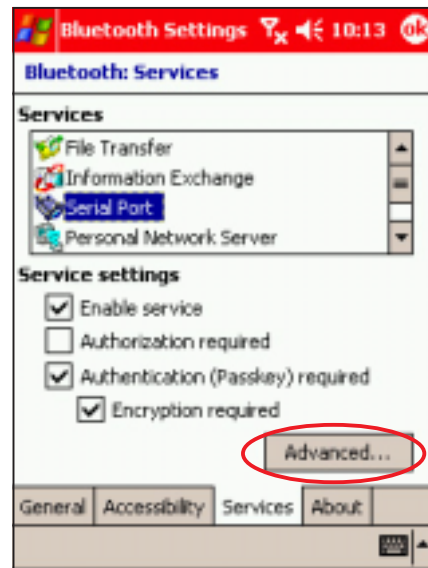
Bluetooth® services

Wireless serial port

Using a Bluetooth® serial port is equivalent to using a physical cable serial port connection between two devices. As with a physical connection, you have to configure the application that will use the serial port.

To configure the Bluetooth Serial Port:

1. Tap the Bluetooth icon  from the Today screen to display the Bluetooth menu.
2. Tap **Bluetooth Settings**, then tap the **Services** tab.
3. Select **Serial Port** from the available services, then tap the **Advanced** button.
4. Note the assigned Outbound COM Port 6, then assign the same Outbound COM port to the application that will use the Bluetooth serial port.
5. Tap  to close the screen.



NOTE Refer to the application's documentation for more information about configuring your application's Outbound COM port.

To use the wireless serial port:

1. Create a connection to the device that uses the wireless serial port (i.e. Bluetooth GPS). See the section “Bluetooth connection wizard” on page 11-7.
2. Tap and hold the Bluetooth icon on the Today screen, then tap **Bluetooth Manager**.
3. In My Shortcuts screen, tap and hold the device connection shortcut, then select **Connect** from the pop-up menu.
4. Enter the required information on the succeeding screens to complete the connection process.
5. When the connection is active, you can exchange, share, and browse data and files or launch applications from the remote Bluetooth device.

Dial-up networking

The Dial-up Networking feature allows you to connect to a remote computer through a phone line. Once connected, you can browse the Internet, check or read emails, etc.

NOTE The remote Bluetooth device that will provide the Dial-up Networking service should have access to a telephone system, either a hard-wired or a cellular connection, and capable of answering a call.

Devices that may provide a Dial-up Networking service:

- Bluetooth-enabled cellular telephones
- Bluetooth-enabled desktop computers attached to a telephone system
- Bluetooth modems


To use Dial-up Networking:

1. Create a connection to the device that will provide telephone access. See the section “Bluetooth connection wizard” on page 11-7.
2. Tap and hold the Bluetooth icon on the Today screen, then tap **Bluetooth Manager**.
3. In My Shortcuts screen, tap and hold the **Dial-up Networking Connection** shortcut, then select **Connect** from the pop-up menu.
4. On the first Bluetooth: Dial-up Connection screen, double-tap **New Connection...** OR select **New Connection**, then tap **OK**.
5. Key-in the following information on the second Bluetooth: Dial-up Connection screen:
 - Name for a connection
 - Country code (if dialing outside the default country setting)
 - Area code (if dialing outside the default area code setting)
 - Phone number to be dialed
6. Tap .
7. Enter the required information on the succeeding screens to complete the connection process.
8. When the connection is active, open a web browser from the device.

Send via Bluetooth

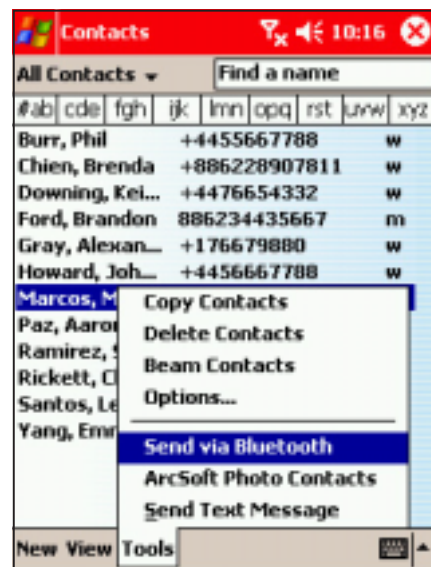
You can conveniently send your Pocket Outlook contacts, calendar items, and tasks individually or collectively to the remote device via Bluetooth.

To send data via Bluetooth:

1. Tap , then open either **Contacts**, **Calendar**, or **Tasks**.
2. Highlight an item that you wish to send to the remote device.
3. Tap and hold the item, then tap **Send via Bluetooth** from the pop-up menu.

OR

Tap **Tools** from the command bar, then select **Send via Bluetooth**.



The device searches and displays remote Bluetooth® device(s) in your location.



4. Tap the destination of the file, then tap **ok** to send.



Bluetooth® Personal Area Network

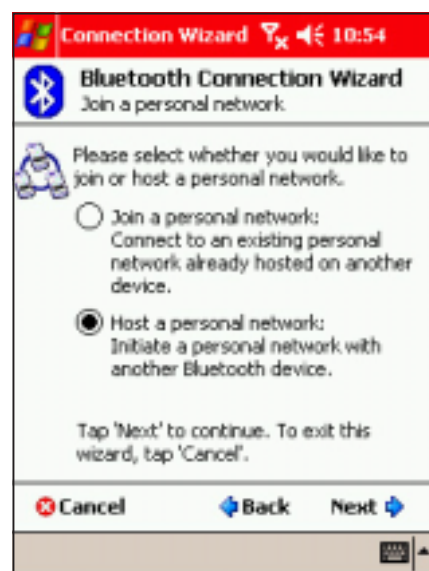
A Bluetooth® personal area network is a private, temporary, ad-hoc network of up to eight (8) devices. A Bluetooth® personal area network allows you to easily exchange information that normally requires a TCP/IP network. Most chat utilities, multi-player games, etc. are fully functional in a Bluetooth® personal area network environment.

Bluetooth® private area networks are subject to the same security settings (service availability, authorisation, authentication, and encryption) that govern other Bluetooth® communications.

One Bluetooth® device must be the host of the personal area network. Other Bluetooth® devices join the network as clients. The host can accept and reject clients on an individual basis.

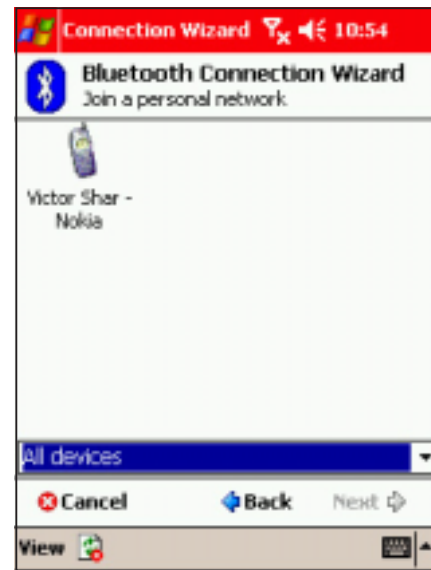
To set up a Bluetooth personal area network:

1. From the **Bluetooth Manager**, tap **New > Join a personal network**. Tap **Next**.
2. On the wizard screen, select **Host a personal network**, then tap **Next**. The device scans for Bluetooth® devices.



NOTE Adding devices is optional. You do not have to add devices to the personal network while configuring the host. You can let other devices join the personal network later.

3. Tap the remote devices you want to add to the personal network, then tap **Next**.



4. Add remote devices to the Bluetooth personal network, if desired.
 - a. Tap the **Add** button, then select the device that you want to add.
 - b. Add other devices, if desired. You can add up to eight devices, including the host.
5. After adding devices, tap **OK** to complete the setup and close the wizard.



To join a personal network:

1. From the **Bluetooth Manager**, tap **New** > **Join a personal network**. Tap **Next**.
2. On the wizard screen, select **Join a personal network**, then tap **Next**. The Bluetooth browser appears.
3. Select the host of the personal network, then tap **Next** to establish a connection to the personal area network. If you are asked to enter the IP network settings, select **Use server-assigned IP address**, then tap **ok**.

Notices

Chapter summary

- **Federal Communications Commission
StatementA-3**
- **Canadian Department of
Communications StatementA-3**
- **UL Safety NoticesA-4**

Federal Communications Commission Statement

This device complies with Part 15 of the FCC Rules. Operation is subject to the following two conditions:

- 1) This device may not cause harmful interference, and
- 2) This device must accept any interference received, including interference that may cause undesired operation.

This device and its antenna must not be co-located or operating in conjunction with any other antenna or transmitter.

This equipment has been tested and found to comply with the limits for a Class B digital device, pursuant to Part 15 of the FCC Rules. These limits are designed to provide reasonable protection against harmful interference in a residential installation. This equipment generates, uses and can radiate radio frequency energy and, if not installed and used in accordance with manufacturer's instructions, may cause harmful interference to radio communications. However, there is no guarantee that interference will not occur in a particular installation. If this equipment does cause harmful interference to radio or television reception, which can be determined by turning the equipment off and on, the user is encouraged to try to correct the interference by one or more of the following measures:

- Reorient or relocate the receiving antenna.
- Increase the separation between the equipment and receiver.
- Connect the equipment to an outlet on a circuit different from that to which the receiver is connected.
- Consult the dealer or an experienced radio/TV technician for help.

WARNING! The use of shielded cables for connection of the monitor to the graphics card is required to assure compliance with FCC regulations. Changes or modifications to this unit not expressly approved by the party responsible for compliance could void the user's authority to operate this equipment.

Canadian Department of Communications Statement

This digital apparatus does not exceed the Class B limits for radio noise emissions from digital apparatus set out in the Radio Interference Regulations of the Canadian Department of Communications.

This class B digital apparatus complies with Canadian ICES-003.

UL Safety Notices

Required for UL 1459 covering telecommunications (telephone) equipment intended to be electrically connected to a telecommunication network that has an operating voltage to ground that does not exceed 200V peak, 300V peak-to-peak, and 105V rms, and installed or used in accordance with the National Electrical Code (NFPA 70).

When using the Pocket PC, basic safety precautions should always be followed to reduce the risk of fire, electric shock, and injury to persons, including the following:

- **Do not use** the Pocket PC near water, for example, near a bath tub, wash bowl, kitchen sink or laundry tub, in a wet basement or near a swimming pool.
- **Do not use** the Pocket PC during an electrical storm. There may be a remote risk of electric shock from lightning.
- **Do not use** the Pocket PC in the vicinity of a gas leak.

Required for UL 1642 covering primary (non-rechargeable) and secondary (rechargeable) lithium batteries for use as power sources in products. These batteries contain metallic lithium, or a lithium alloy, or a lithium ion, and may consist of a single electrochemical cell or two or more cells connected in series, parallel, or both, that convert chemical energy into electrical energy by an irreversible or reversible chemical reaction.

- **Do not** dispose the Pocket PC battery pack in a fire, as they may explode. Check with local codes for possible special disposal instructions to reduce the risk of injury to persons due to fire or explosion.
- **Do not** use power adapters or batteries from other devices to reduce the risk of injury to persons due to fire or explosion. Use only UL certified power adapters or batteries supplied by the manufacturer or authorized retailers.

Replaceable batteries

If an equipment is provided with a replaceable battery and if replacement by an incorrect type could result in an explosion (e.g. with some lithium batteries), the following applies:

- if the battery is placed in an OPERATOR ACCESS AREA, there shall be a marking close to the battery or a statement in both the operating and the servicing instructions;
- if the battery is placed elsewhere in the equipment, there shall be a marking close to the battery or a statement in the servicing instructions.

The marking or statement shall include the following or similar text:

CAUTION

RISK OF EXPLOSION IF BATTERY IS REPLACED
BY AN INCORRECT TYPE.
DISPOSE OF USED BATTERIES ACCORDING
THE INSTRUCTIONS

Compliance is checked by inspection.

CAUTION Use only with the battery listed in the user manual.

Operator access with a tool

If a TOOL is necessary to gain access to an OPERATOR ACCESS AREA, either all other compartments within that area containing a hazard shall be inaccessible to the OPERATOR by the use of the same TOOL, or such compartments shall be marked to discourage OPERATOR access.

An acceptable marking for an electric shock hazard is (ISO 3864, No. 5036).

Equipment for restricted access locations

For equipment intended only for installation in a RESTRICTED ACCESS LOCATION, the installation instructions shall contain a statement to this effect.

► RF Exposure Information (SAR)

This model phone meets the government's requirements for exposure to radio waves.

This phone is designed and manufactured not to exceed the emission limits for exposure to radio frequency (RF) energy set by the Federal Communications Commission of the U.S. Government.

The exposure standard for wireless mobile phones employs a unit of measurement known as the Specific Absorption Rate, or SAR. The SAR limit set by the FCC is 1.6W/kg. *Tests for SAR are conducted using standard operating positions accepted by the FCC with the phone transmitting at its highest certified power level in all tested frequency bands. Although the SAR is determined at the highest certified power level, the actual SAR level of the phone while operating can be well below the maximum value. This is because the phone is designed to operate at multiple power levels so as to use only the power required to reach the network. In general, the closer you are to a wireless base station antenna, the lower the power output.

The highest SAR value for the model phone as reported to the FCC when tested for use at the ear is 0.633 W/kg and when worn on the body, as described in this user guide, is 0.703 W/kg. (Body-worn measurements differ among phone models, depending upon available enhancements and FCC requirements.)

While there may be differences between the SAR levels of various phones and at various positions, they all meet the government requirement.

The FCC has granted an Equipment Authorization for this model phone with all reported SAR levels evaluated as in compliance with the FCC RF exposure guidelines. SAR information on this model phone is on file with the FCC and can be found under the Display Grant section of <http://www.fcc.gov/oet/fccid> after searching on FCC ID: MSQ-P505.

For body worn operation, this phone has been tested and meets the FCC RF exposure guidelines for use with an accessory that contains no metal and the positions the handset a minimum of 1.5 cm from the body. Use of other enhancements may not ensure compliance with FCC RF exposure guidelines. If you do not use a body-worn accessory and are not holding the phone at the ear, position the handset a minimum of 1.5 cm from your body when the phone is switched on.