



WiFi-b™ Card

Wireless Fidelity Card

User Guide



E1414

Revised Edition V2

September 2003

Copyright © 2003 ASUSTeK COMPUTER INC. All Rights Reserved.

No part of this manual, including the products and software described in it, may be reproduced, transmitted, transcribed, stored in a retrieval system, or translated into any language in any form or by any means, except documentation kept by the purchaser for backup purposes, without the express written permission of ASUSTeK COMPUTER INC. ("ASUS").

Product warranty or service will not be extended if: (1) the product is repaired, modified or altered, unless such repair, modification or alteration is authorized in writing by ASUS; or (2) the serial number of the product is defaced or missing.

ASUS PROVIDES THIS MANUAL "AS IS" WITHOUT WARRANTY OF ANY KIND, EITHER EXPRESS OR IMPLIED, INCLUDING BUT NOT LIMITED TO THE IMPLIED WARRANTIES OR CONDITIONS OF MERCHANTABILITY OR FITNESS FOR A PARTICULAR PURPOSE. IN NO EVENT SHALL ASUS, ITS DIRECTORS, OFFICERS, EMPLOYEES OR AGENTS BE LIABLE FOR ANY INDIRECT, SPECIAL, INCIDENTAL, OR CONSEQUENTIAL DAMAGES (INCLUDING DAMAGES FOR LOSS OF PROFITS, LOSS OF BUSINESS, LOSS OF USE OR DATA, INTERRUPTION OF BUSINESS AND THE LIKE), EVEN IF ASUS HAS BEEN ADVISED OF THE POSSIBILITY OF SUCH DAMAGES ARISING FROM ANY DEFECT OR ERROR IN THIS MANUAL OR PRODUCT.

SPECIFICATIONS AND INFORMATION CONTAINED IN THIS MANUAL ARE FURNISHED FOR INFORMATIONAL USE ONLY, AND ARE SUBJECT TO CHANGE AT ANY TIME WITHOUT NOTICE, AND SHOULD NOT BE CONSTRUED AS A COMMITMENT BY ASUS. ASUS ASSUMES NO RESPONSIBILITY OR LIABILITY FOR ANY ERRORS OR INACCURACIES THAT MAY APPEAR IN THIS MANUAL, INCLUDING THE PRODUCTS AND SOFTWARE DESCRIBED IN IT.

Products and corporate names appearing in this manual may or may not be registered trademarks or copyrights of their respective companies, and are used only for identification or explanation and to the owners' benefit, without intent to infringe.

Contents

Notices	v
Safety information	vi
About this guide	vi
WiFi-b™ specifications summary	viii
Chapter 1: Product introduction	
1.1 Welcome	1-2
1.2 Package contents	1-2
1.3 Features	1-2
1.4 Card layout	1-3
1.5 LED indicators	1-3
Chapter 2: Hardware installation	
2.1 System requirements	2-2
2.2 Installing the WiFi-b™ card	2-3
2.3 Antenna placement	2-3
2.4 WiFi-b™ modes	2-4
2.5 Network setup	2-4
Chapter 3: Software installation	
3.1 Support CD information	3-2
3.1.1 Installing the WLAN Card Utilities and driver	3-2
3.1.2 Setting the Windows® XP wireless options	3-2
3.1.3 Other support CD options	3-2
3.2 Setup Wizard	3-3
3.2.1 Selecting the WiFi-b™ operation mode	3-3
3.2.2 Station Mode	3-3
3.2.3 My Configuration	3-5
3.3 Internet Connection Sharing (ICS)	3-10
3.3.1 Broadband connection that requires an account	3-10
3.3.2 Broadband connection that is always on	3-14
3.3.3 Dial-up modem	3-15
Chapter 4: Utility information	
4.1 The Control Center utility	4-2
4.1.1 Control Center icons	4-2

Contents

4.2	Control Center Right-click menu	4-2
4.2.1	Wireless LAN Card Settings	4-3
4.2.2	Help Menu	4-9
4.2.3	Change Mode	4-9
4.2.4	Preferences	4-10
4.2.5	About Control Center	4-10
4.3	Control Center Left-click menu	4-10
4.4	Configuring WiFi-b™ by Wireless Settings utility	4-11
4.4.1	Station Mode (STA)	4-11
4.4.2	Soft Access Point Mode (Soft AP)	4-13
4.5	Internet Connection Sharing (ICS)	4-16
4.5.1	Connect to the Internet using a broadband connection that is always on	4-16
4.5.2	Connect to the Internet using a broadband or dial-up connection that requires an account	4-17
4.6	Network Bridge	4-19

Appendix

A.1	Troubleshooting	A-2
A.2	Channels	A-5

Notices

Federal Communications Commission Statement

This device complies with FCC Rules Part 15. Operation is subject to the following two conditions:

- This device may not cause harmful interference, and
- This device must accept any interference received including interference that may cause undesired operation.

This equipment has been tested and found to comply with the limits for a Class B digital device, pursuant to Part 15 of the FCC Rules. These limits are designed to provide reasonable protection against harmful interference in a residential installation. This equipment generates, uses and can radiate radio frequency energy and, if not installed and used in accordance with manufacturer's instructions, may cause harmful interference to radio communications. However, there is no guarantee that interference will not occur in a particular installation. If this equipment does cause harmful interference to radio or television reception, which can be determined by turning the equipment off and on, the user is encouraged to try to correct the interference by one or more of the following measures:

- Reorient or relocate the receiving antenna.
- Increase the separation between the equipment and receiver.
- Connect the equipment to an outlet on a circuit different from that to which the receiver is connected.
- Consult the dealer or an experienced radio/TV technician for help.



The use of shielded cables for connection of the monitor to the graphics card is required to assure compliance with FCC regulations. Changes or modifications to this unit not expressly approved by the party responsible for compliance could void the user's authority to operate this equipment.

Canadian Department of Communications Statement

This digital apparatus does not exceed the Class B limits for radio noise emissions from digital apparatus set out in the Radio Interference Regulations of the Canadian Department of Communications.

This class B digital apparatus complies with Canadian ICES-003.

Safety information >

In order to maintain compliance with the FCC RF exposure guidelines, this equipment should be installed and operated with minimum distance of more than **[20cm]** between the radiator and your body. Use only with supplied antenna. Unauthorized antenna, modification, or attachments could damage the transmitter and may violate FCC regulations.



Any changes or modifications not expressly approved in this manual could void your authorization to use this device.

MPE Statement

Your device contains a low power transmitter. When device is transmitted it sends out Radio Frequency (RF) signal.

Caution Statement of the FCC Radio Frequency Exposure

This Wireless LAN radio device has been evaluated under FCC Bulletin OET 65C and found compliant to the requirements as set forth in CFR 47 Sections 2.1091, and 15.247(b)(4) addressing RF Exposure from radio frequency devices. The radiation output power of this Wireless LAN device is far below the FCC radio frequency exposure limits. Nevertheless, this device shall be used in such a manner that the potential for human contact during normal operation is minimized. Use in a portable or body-worn configuration is strictly prohibited. Separate approval is required for all other operating configurations, including portable configurations with respect to 2.1093 and different antenna configurations.

When using this device, a certain separation distance between antenna and nearby persons has to be kept to ensure RF exposure compliance. In order to comply with the RF exposure limits established in the ANSI C95.1 standards, the distance between the antennas and the user should not be less than 20cm.

About this guide

This user guide contains the information you need to install and configure your WiFi-b™ card.

How this guide is organized

This manual contains the following parts:

- **Chapter 1: Product introduction**
This chapter describes the features of the WiFi-b™ card. It presents the card layout, the standard package contents and LED indicators.
- **Chapter 2: Hardware installation**
This chapter provides a step-by-step procedure on installing the WiFi-b™ card into an ASUS motherboard. It also provides information on the system requirements and recommended WiFi-b™ wireless network settings.
- **Chapter 3: Software installation**
This chapter provides information on the WiFi-b™ card software installation and describes configuration of WiFi-b™ using the setup wizard.
- **Chapter 4: Utility information**
This chapter provides information on how to configure the WiFi-b™ using the Control Center utility.
- **Appendix**
The appendix contains sections for troubleshooting and information on IEEE 802.11b channels and frequencies.

Conventions used in this guide

To make sure that you perform certain tasks properly, take note of the following symbols used throughout this manual.



WARNING: Information to prevent injury to yourself when trying to complete a task.



CAUTION: Information to prevent damage to the components when trying to complete a task.



IMPORTANT: Information that you **MUST** follow to complete a task.



NOTE: Tips and additional information to aid in completing a task.

WiFi-b™ specifications summary

Standard	IEEE 802.11b
Technology	Direct Sequence Spread Spectrum (DSSS)
Data Transfer Rate	11Mbps (with automatic fallback to 5.5, 2 and 1Mbps)
Host Interface	ASUS proprietary WiFi-b™ interface
Network Types	Supports Infrastructure and Ad Hoc networks
Frequency Band	2.4 GHz ~ 2.5 GHz
Security	64-bit/128-bit configurable WEP encryption
Access Point	Software access point function supports up to 31 wireless clients (Windows® XP only)
Operating Distance	Indoors: 100 ft (30 m) @ 11Mbps Outdoors: 1000 ft (300 m) @ 11Mbps
Supported OS	<i>Station Mode:</i> Windows® 98SE/ME/2000/XP <i>Soft AP Mode:</i> Windows® XP
Antenna	Stand-alone dipolar antenna

**Specifications are subject to change without notice.*

Chapter 1

This chapter describes the features of the WiFi-b™ card. It presents the card layout, the standard package contents and LED indicators.

Product introduction

A decorative graphic in the bottom-left corner consisting of several concentric, light gray circles centered around a small dark gray dot. A solid black triangle points from the bottom-left towards the center dot.

1.1 Welcome

Thank you for choosing the ASUS WiFi-b™ Card! The WiFi-b™ card is a wireless network interface card for ASUS motherboards with the proprietary Wi-Fi slot. This card conforms to the IEEE 802.11b standard for wireless local area network (WLAN) assuring you of seamless connection to any wireless network. The WiFi-b™ card also allows you to share a single Internet connection with other computers making it a perfect solution for your home or small office network. With easy installation and full software support, WiFi-b™ is sure to keep you ahead in the world of wireless computing.

1.2 Package contents

Check the following items in your ASUS WiFi-b™ package. Contact your retailer if any item is damaged or missing.

- ASUS WiFi-b™ card
- ASUS WiFi-b™ antenna
- User Guide
- WiFi-b™ support CD*

** If you purchased an ASUS Wireless Edition motherboard, the WiFi-b™ support CD contents are included in the motherboard support CD.*

1.3 Features

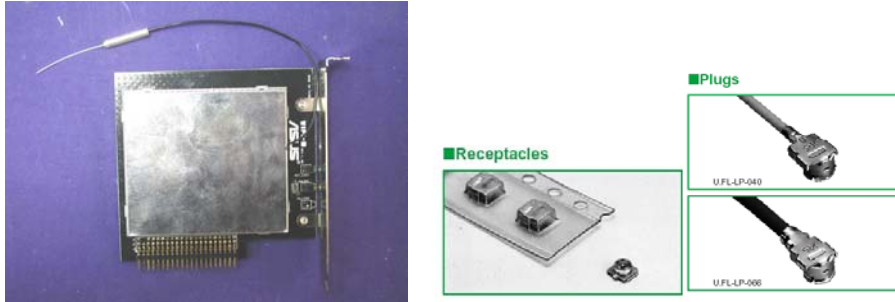
The WiFi-b™ card gives you freedom to connect to a wired or wireless local area network and the Internet without the wires and cables. Employing the Direct Sequence Spread Spectrum (DSSS) technology, the WiFi-b™ card is capable of transmitting and receiving signals through radio waves on the 2.4 GHz band.

Here are other WiFi-b™ features:

- Reliable data transfer rates of up to 11Mbps with automatic fallback to 5.5, 2, and 1Mbps
- Secure data transmission via Wired Equivalent Privacy (WEP) encryption
- Operating distance of up to 100 ft (30 m) indoors and 1000 ft (300m) outdoors*
- Easy installation and full software support
- Soft access point function supports up to 31 wireless clients (Windows® XP only)
- Supports infrastructure (WiFi-b™ to access point) and ad-hoc (WiFi-b™ to other wireless clients) network types
- Windows® 98SE/ME/2000/XP compatible

** The WiFi-b™ operating distance may be shorter if there are walls, barriers, or interferences in the home layout or operating environment.*

1.4 Card layout



WiFi-b™ connectors

1.5 LED indicators

The WiFi-b™ card comes with a Data Transmission (Green AIR) and Network Link (Yellow LINK) LED indicators. Refer to the table below for LED indications.

AIR	LINK	Meaning
Fast Blink	ON	WiFi-b™ radio is on and is transmitting/receiving data
ON	ON	WiFi-b™ radio is on but no data activity
OFF	OFF	No power / WiFi-b™ radio is off or disabled
Blink	OFF	WiFi-b™ is not connected to a wireless LAN

Chapter 2

This chapter provides a step-by-step procedure on installing the WiFi-b™ card into an ASUS motherboard that supports Wi-Fi specification. It also provides information on system requirements and recommended wireless network settings.

Hardware installation

A decorative graphic consisting of several concentric circles of varying shades of gray, centered on the page. A solid black triangle points from the bottom-left towards the center of the circles.

2.1 System requirements

Before installing the WiFi-b™ card, make sure that your system meets the following requirements.

- ASUS motherboard with Wi-Fi slot
- Intel® Pentium™ 4 or AMD K7/K8 system
- Minimum 64MB system memory
- Windows® 98SE/2000/ME/XP operating system
- CD-ROM drive for software and drivers installation



The following ASUS motherboards support the WiFi-b™ card: P4C800-E Deluxe, P4C800 Deluxe, P4C800, P4P800 Deluxe, P4P800, P4P800S-E Deluxe, P4P800S, P4P8X, P4S800D Deluxe, P4S800D, P4S800, K8V Deluxe, A7N8X-E Deluxe, and A7V600. Visit the ASUS website for an updated list of motherboards with Wi-Fi slot.

Notes for P4P800 Deluxe/P4C800 Deluxe/P4P800/P4C800/P4C800-E Deluxe motherboards:

- Update the BIOS before installing the WiFi-b™ card. Download the latest BIOS file from the ASUS website.
- Update the 3Com utilities to V.046 before installing the WiFi-b™ card. The 3Com utility update is available in the WiFi-b™ support CD.
- The PCI slot nearest the WiFi slot may not be used simultaneously with the Wi-Fi slot. If a PCI card is installed on this slot, transfer it to another PCI slot before installing WiFi-b™.

2.2 Installing the WiFi-b™ card



Before handling the card, touch a bare metal portion of your PC to discharge static electricity from your body. Wear a wrist strap grounded to the PC chassis when handling the card.



The PCI5 and the Wi-Fi slot may not be used simultaneously on certain motherboards. Check your motherboard documentation for this limitation.

Follow these instructions to install the WiFi-b™ card in your system.

1. Make sure that the PC is turned off. Unplug the power cord from the electrical socket.
2. Remove the PC cover.
3. Locate the Wi-Fi slot. Refer to your motherboard documentation for the Wi-Fi slot location.
4. Remove the rear panel bracket opposite the Wi-Fi slot. Keep the screw for later use.

5. Carefully insert the card into the Wi-Fi slot.



To prevent incorrect orientation, a WiFi-b™ connector pin is removed to match the covered hole on the Wi-Fi slot.

6. Secure the card with the screw that you removed earlier.

7. Replace the PC cover and plug in the power cord.

9. Connect the dipolar antenna twist-on connector to the antenna connector (male) of the WiFi-b™ card.

8. Turn on the computer.



An installed WiFi-b™ card

2.3 Antenna placement

Place the antenna at an elevated location to receive or transmit better signal. Do not place the antenna under your table or in a closed compartment.



2.4 WiFi-b™ modes

The WiFi-b™ card may be set to Station (STA) or Soft Access Point (Soft AP) mode. In STA mode, WiFi-b™ connects to a wireless or wired network through an access point. In Soft AP mode, WiFi-b™ connects other computers with wireless devices to a wireless or wired network.

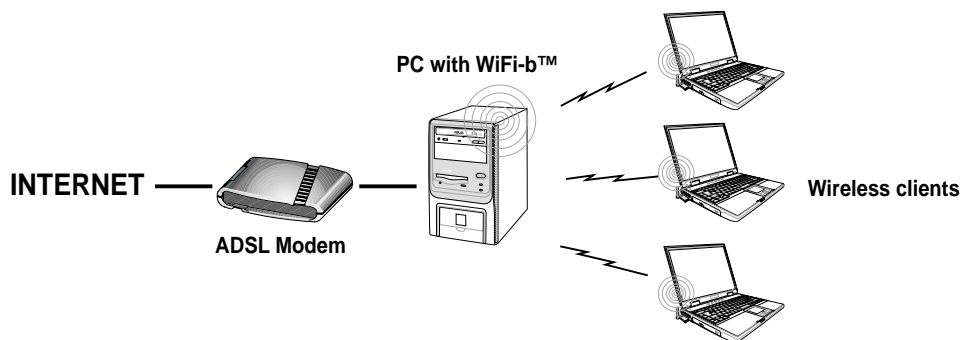
The following section describes the WiFi-b™ card functions in a typical home or small office network.

2.5 Network setup

After installing the WiFi-b™ card, determine your network settings to avail all WiFi-b™ features. The following network settings are recommended.

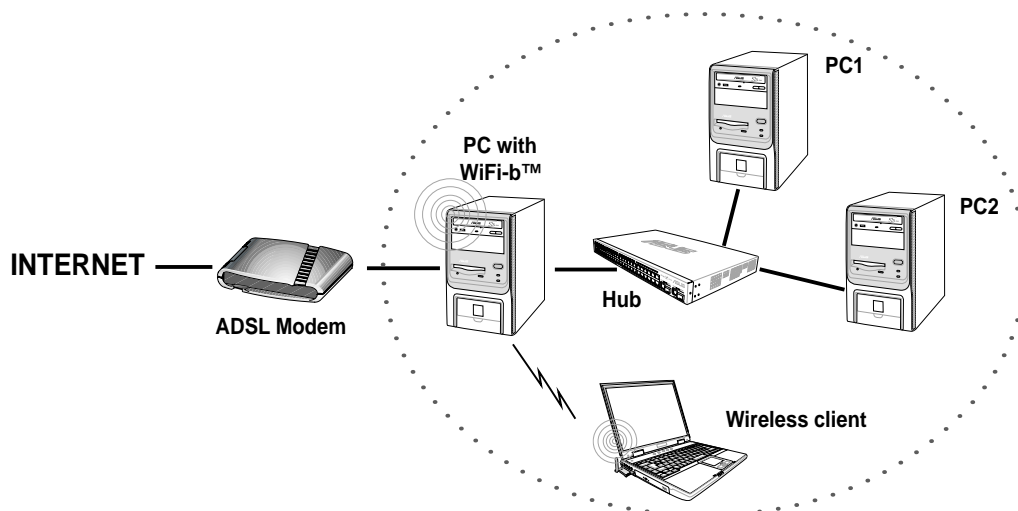
WiFi-b™ in Soft Access Point (Soft AP) Mode - Internet Connection Sharing (ICS)

The Internet Connection Sharing (ICS) feature allows wireless clients to share a single Internet connection. In this setup, WiFi-b™ automatically assigns a virtual IP address to each of the wireless clients. The computer with the WiFi-b™ card must create a broadband network connection.



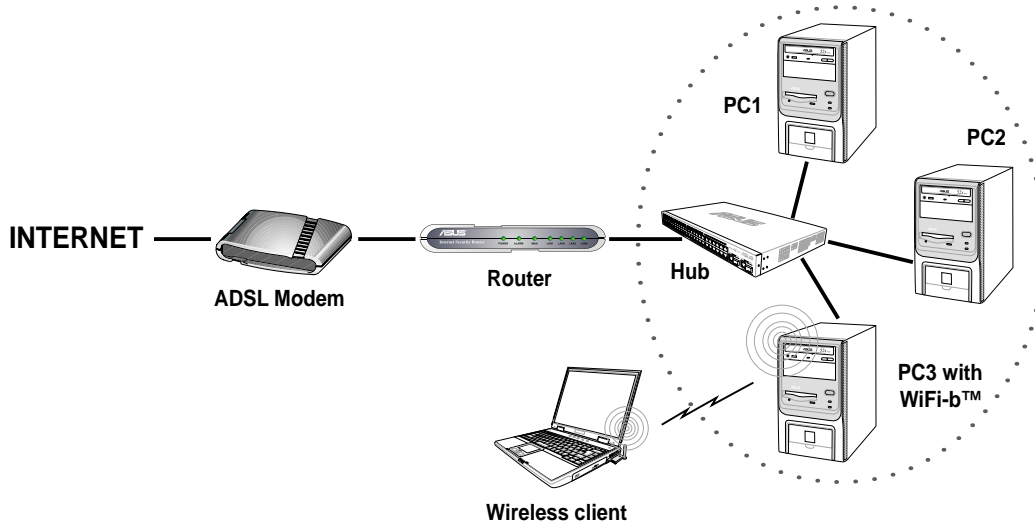
WiFi-b™ in Soft Access Point (Soft AP) Mode -ICS and Bridge

In this setup, WiFi-b™ bridges the computer's network connection to the ADSL modem (wired) and to the wireless client (wireless). WiFi-b™ assigns a virtual IP address to the wireless client. The PC with the installed WiFi-b™ card must setup a broadband network connection.



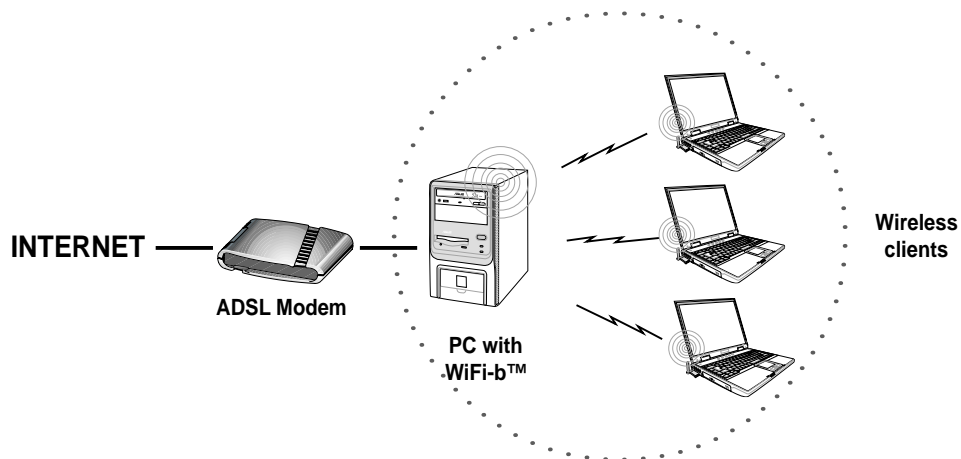
WiFi-b™ in Soft Access Point (Soft AP) Mode - Bridge

In this setup, WiFi-b™ functions as a wireless hub allowing a wireless client to access the ADSL modem and the Internet. The router assigns a virtual Internet Protocol (IP) address to the wireless client.



WiFi-b™ in Soft Access Point (Soft AP) Mode - Bridge

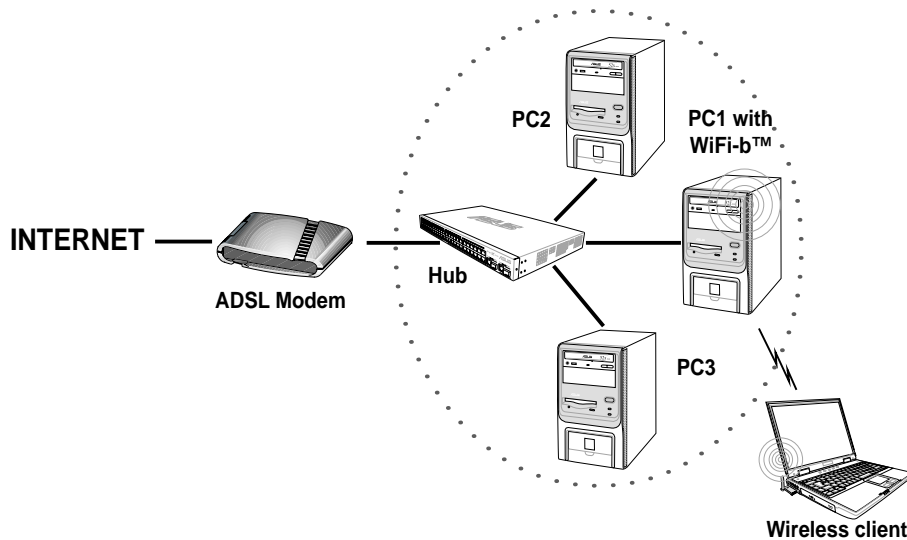
In this setup, WiFi-b™ bridges the computer's network connection to the ADSL modem and to the wireless clients allowing the latter access to the Internet. The real IP address for each wireless client is supplied by the Internet Service Provider. In this setup, every computer must create a broadband network connection.



The number of computers that can connect simultaneously to the Internet depends on the number of IP address assigned by the ISP.

WiFi-b™ in Soft Access Point (Soft AP) Mode - Bridge

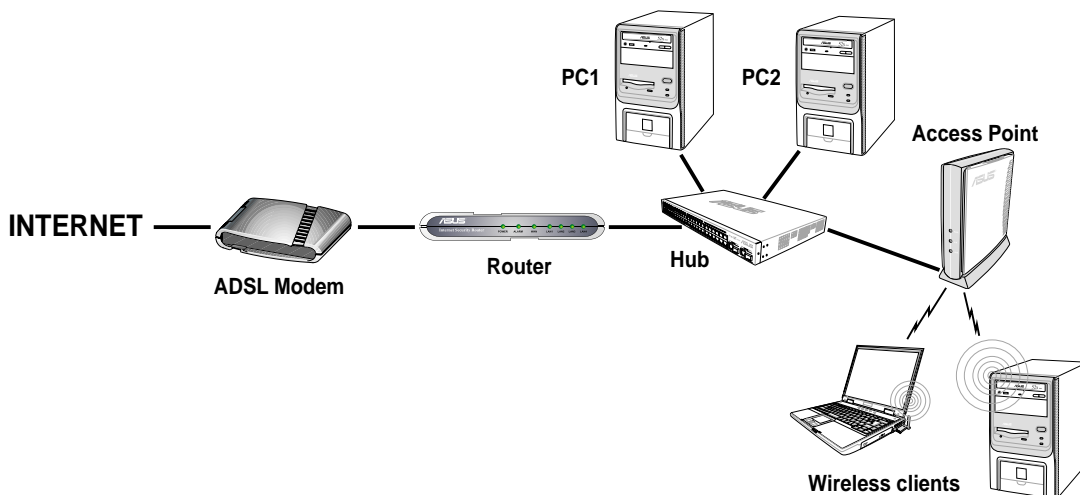
This setup applies to a host computer with an installed WiFi-b™ card and a network adapter connected to a hub. By bridging the network connections to the hub and the wireless client, the latter is allowed connection to the Internet via the ADSL modem. The Internet Service Provider (ISP) assigns the real IP address to the wireless client. In this setup, every computer must create a broadband network connection.



The number of computers that can connect simultaneously to the Internet depends on the number of IP address assigned by the ISP.

WiFi-b™ in Station Mode - Infrastructure Network

When set to Station Mode, WiFi-b™ connects to a wired or wireless network via an access point. The router assigns a virtual IP address to each wireless client.



Chapter 3

This chapter provides information on the WiFi-b™ card software installation and describes configuration of WiFi-b™ using the setup wizard.

Software installation

A decorative graphic consisting of several concentric circles of varying shades of gray, centered on the page. A solid black triangle points from the bottom-left towards the center of the circles.

3.1 Support CD information

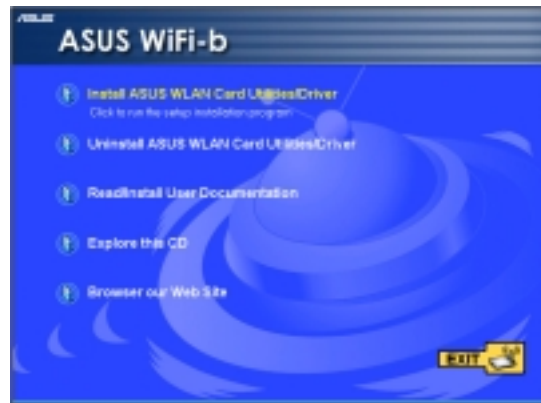


The Support CD contents are subject to change at anytime without notice. Visit the ASUS website for updates.

3.1.1 Installing the WLAN Card Utilities and driver

To install the WiFi-b™ card driver and the Control Center Utility in your computer:

1. Insert the support CD into the CD-ROM drive.
2. Click “Install ASUS WLAN Card Utilities/Driver” when the ASUS WiFi-b installation window appears.



If Autorun is NOT enabled in your computer, browse the contents of the support CD and double click the Setup.exe file to run the CD.



Windows® 98SE/ME users must restart the computer after installation.

3.1.2 Setting the Windows® XP wireless options

The Wireless Option window appears after the software installation if you are using Windows XP®. Select “**Only use ASUS utilities and disable XP wireless function**” to avail all WiFi-b™ card features. Click **OK**.



3.1.3 Other support CD options

Uninstall ASUS WLAN Card Utilities/Driver. Click this option to uninstall the WLAN Card utilities and driver from your system.

Read/Install User Documentation. Click to view the installation and quick setup guides in PDF format.

Explore this CD. Click this option to explore the support CD contents.

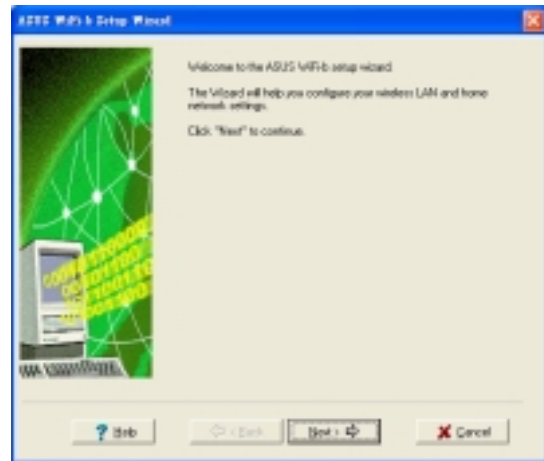
Browse our Web Site. Click this option to visit the ASUS website.



Click **EXIT** to close the installation window.

3.2 Setup Wizard

After configuring the wireless option, the Setup Wizard window appears. Click **Next**.



The appearance of setup wizard windows varies on different operating systems.

3.2.1 Selecting the WiFi-b™ operation mode

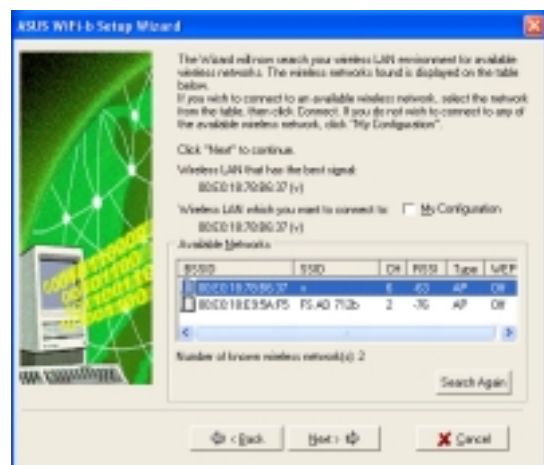
The default setting of the WiFi-b™ card is Station Mode in an Infrastructure type network. The first time you run the setup wizard, it scans available wireless networks in your location and automatically selects the network with the best signal. The wizard also allows you to connect to any of the available networks.

If you want to set your WiFi-b™ in soft access point mode or in Ad Hoc network setting, check **My Configuration**, then click **Next**. See section 3.2.3 “My Configuration” for details.

3.2.2 Station Mode

Follow these instructions to set your WiFi-b™ in station (STA) mode.

Select a wireless network from the table, then click **Next**. WiFi-b™ connects to the selected network.



Click the **Search Again** button to rescan available access points in your location.

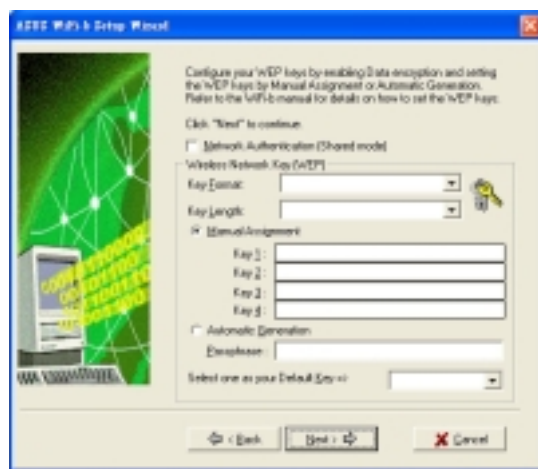
If the wireless network you wish to access has an enabled Wired Equivalent Privacy (WEP) encryption, the setup wizard will prompt you to enable data encryption. Click next.



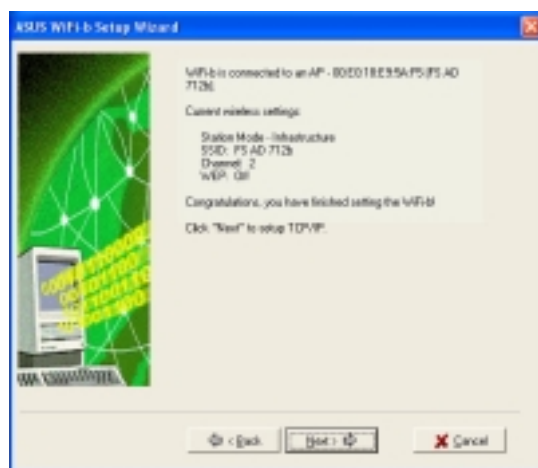
Inquire the WEP keys with the network administrator. The WiFi-b™ and the selected wireless network WEP keys must be identical to establish connection.



Enter the WEP encryption keys you obtained from the network administrator. Refer to **“Config-Encryption Tab”** on page 4-6 for WEP encryption settings. Click **Next**.



When connected, the wizard displays information on the wireless network WiFi-b™ is associated with. Click **Next** to configure the TCP/IP settings.



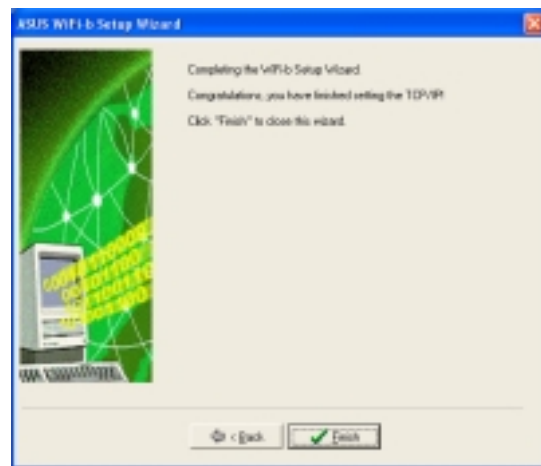
The wizard prompts you to return to the previous window and select another wireless network if WiFi-b™ is not connected to the selected network.

Select automatic IP settings if your network supports automatic IP address assignment. If not, inquire the IP settings with your network administrator, then enter the IP address manually. After configuration, click **Next**.



The TCP/IP configuration window appears when you run the setup wizard on Windows® 98SE/ME/2000. The window also appears in Windows® XP OS if WiFi-b™ is not bridged to other network connections and has a disabled ICS function.

The WiFi-b™ setup is complete. Click **Finish** to close the setup wizard.



3.2.3 My Configuration

The setup wizard displays allows you to set the WiFi-b™ card in three different operation modes when you select **My Configuration**. Select an operation mode, then click **Next**.



Create your own wireless LAN (Soft AP and Ad Hoc modes)

When prompted, assign a **SSID** (Network Name) to the wireless LAN you wish to create, then select a radio channel you wish to use in communicating with other wireless devices. Click **Next** to continue.



Check **Data encryption (WEP enabled)** to secure your wireless network with a Wired Equivalent Privacy (WEP) encryption. Click **Next**.



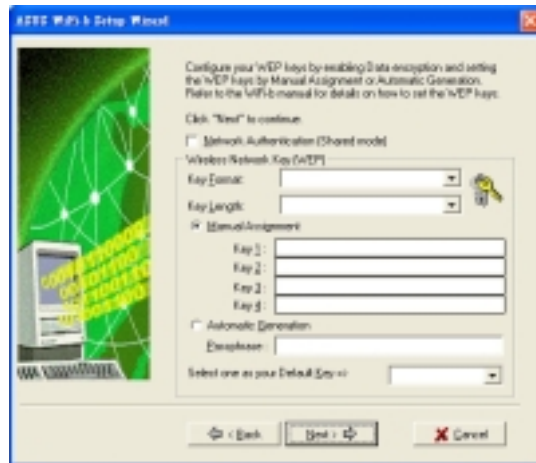
Enabling data encryption prevents unauthorized access by other wireless networks in your location.



Assign the WEP encryption keys of your wireless network. Refer to **“Config-Encryption Tab”** on page 4-6 for WEP encryption settings. Click **Next**.

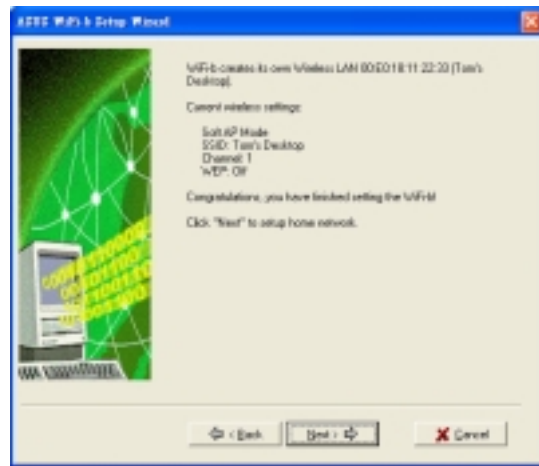


Keep a record of the WEP keys. Wireless computers in your network must have the same WEP keys to establish connection with the WiFi-b™.



The wizard displays the settings of the created wireless network including the WiFi-b™ mode, SSID, channel and WEP information.

If you created a Soft AP, click **Next** to setup Internet Connection Sharing (ICS). See section 3.3 “**Internet Connection Sharing**” on page 3-10.



When WiFi-b™ is set to Ad Hoc mode, click **Next** to configure the TCP/IP settings. Refer to section 3.2.2 “**Station Mode**” on TCP/IP configuration.



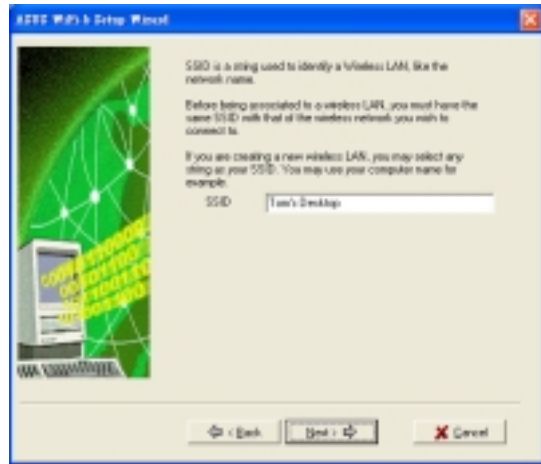
Connecting to a hidden wireless LAN

Some access points disable their SSID broadcasting to prevent a wireless device from finding and accessing their networks. Inquire the SSID of the hidden wireless LAN with the network administrator. To connect to a hidden wireless LAN:

Select **Connect to a hidden wireless LAN**, then click **Next**.



When prompted, enter the SSID of the hidden wireless LAN you obtained from the network administrator. Click **Next**.



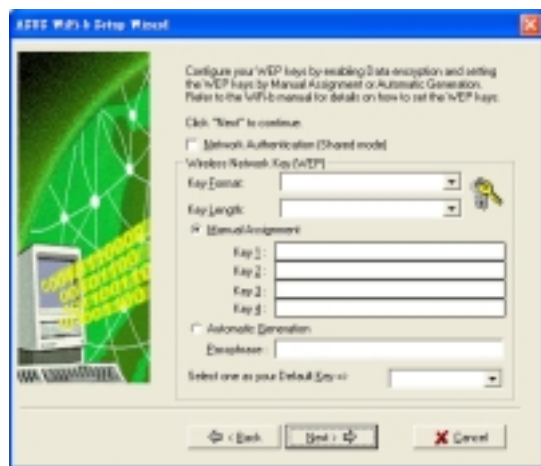
If the hidden wireless LAN you wish to access has an enabled Wired Equivalent Privacy (WEP) encryption, the setup wizard will prompt you to enable data encryption. Click next.



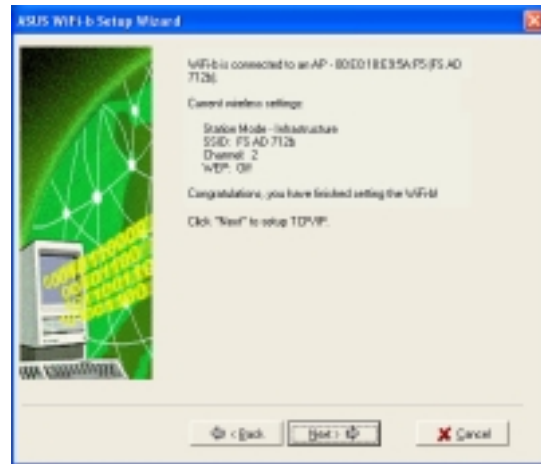
Inquire the WEP keys with the network administrator. The WiFi-b™ and the hidden wireless LAN WEP keys must be identical to establish connection.



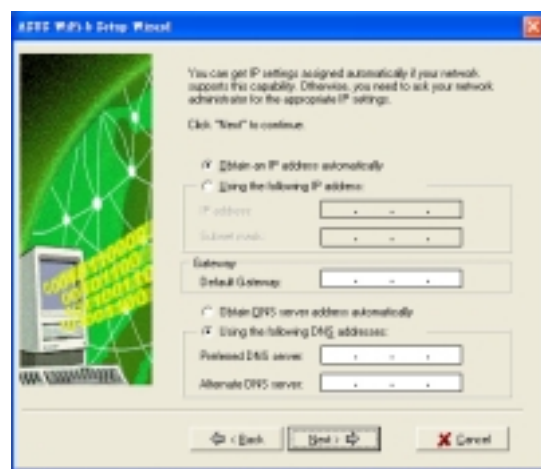
Enter the WEP encryption keys you obtained from the network administrator. Refer to **“Config-Encryption Tab”** on page 4-6 for WEP encryption settings. Click **Next**.



The wizard displays information on the wireless network WiFi-b™ is associated with. Click **Next** to set the TCP/IP configuration.



Select automatic IP settings if your network supports automatic IP address assignment. If not, inquire the IP settings with your network administrator, then enter the IP address manually. After configuration, click **Next**.



The WiFi-b™ setup is complete. Click **Finish** to close the setup wizard.



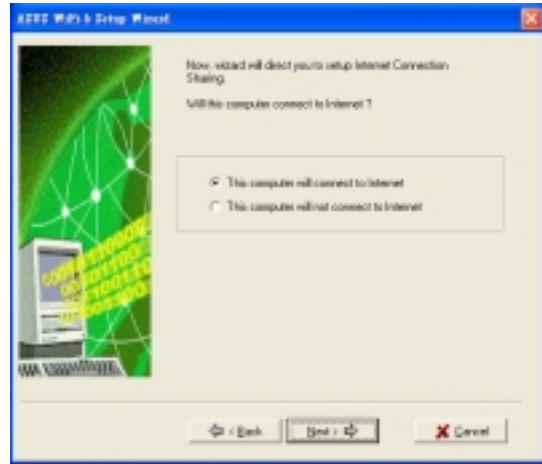
3.3 Internet Connection Sharing (ICS)

After setting the WiFi-b™ in soft AP mode, the wizard will prompt you to setup Internet Connection Sharing (ICS). ICS is a networking feature that allows several computers in a wired or wireless network to share a single Internet connection. To setup ICS:

1. Select whether your computer connects to the Internet or not. Click **Next**.



The wizard will require you to create a home network connection if your computer is not connected to the Internet.



2. Select the Internet connection mode of your computer from a list. Click **Next**.



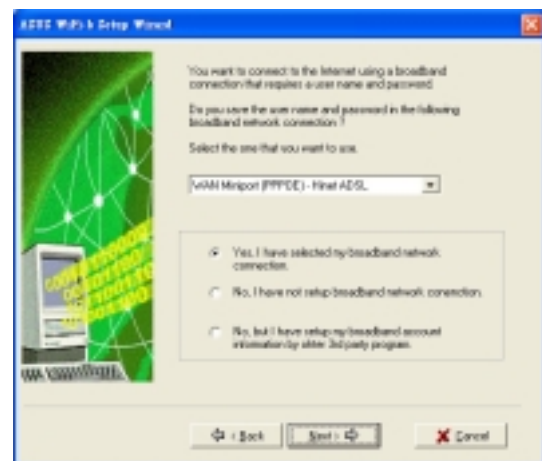
3.3.1 Broadband connection that requires an account

Follow these instructions to enable ICS if you have an existing broadband network connection that requires a username and password.

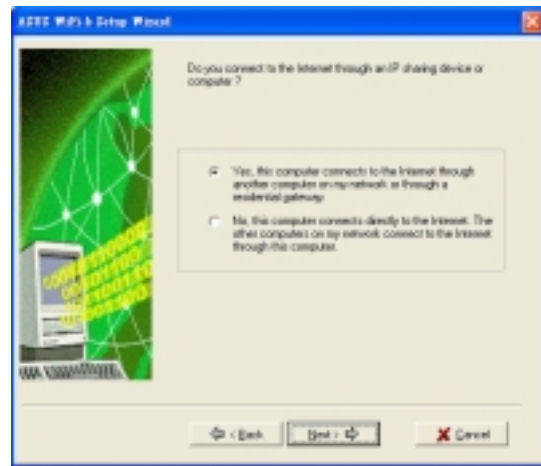
1. Select the broadband network connection from the drop-down list. Click **Next**.



If you do not have a broadband network connection, the wizard will instruct you to create one using the Windows® interface or the support CD from your Internet Service Provider (ISP).



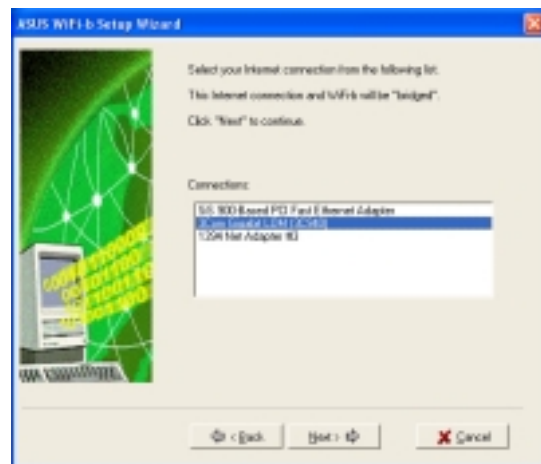
2. When prompted, select whether your computer connects to the Internet directly or through another computer or residential gateway. Click **Next**.



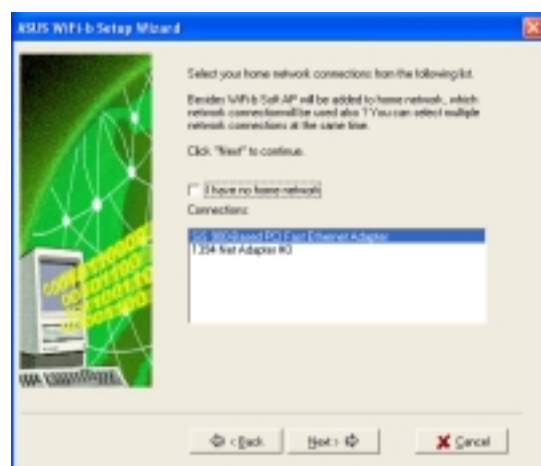
Internet connection via another computer or residential gateway

If your computer connects to the Internet through another computer or residential gateway:

1. Select the network adapter you are using to connect to the host computer or residential gateway. Click **Next**.



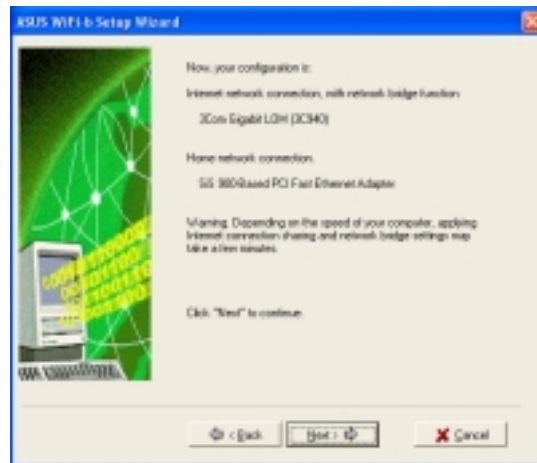
2. Select the network adapters that connect to other computers in your home network, if any. The wizard will bridge these networks with the WiFi-b. Click **Next**.



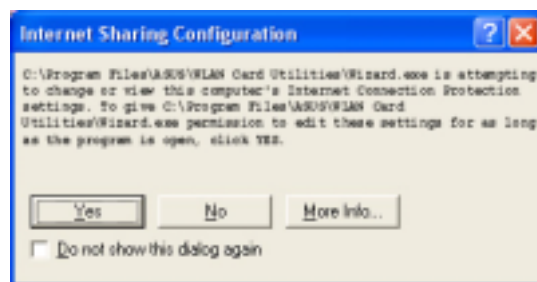
- The wizard creates a network bridge between your wired (LAN) and wireless (WiFi-b™) network connections. Click **Next**.



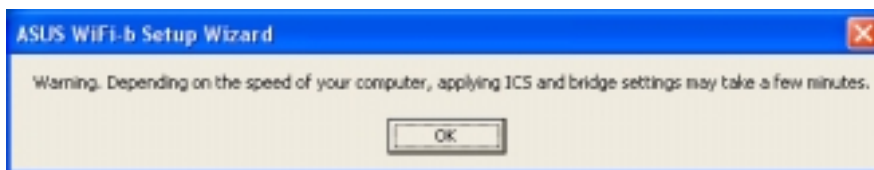
Network bridge is a process of connecting several wired or wireless LAN segments. See page 4-19 for details.



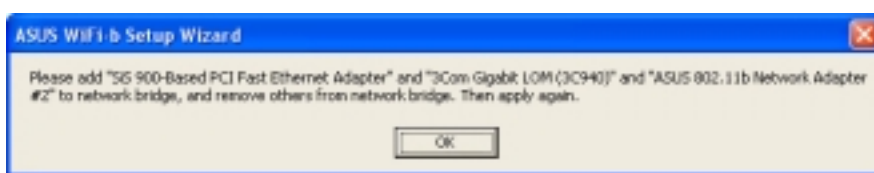
- An Internet Sharing Configuration dialog box appears. Click **Yes**.



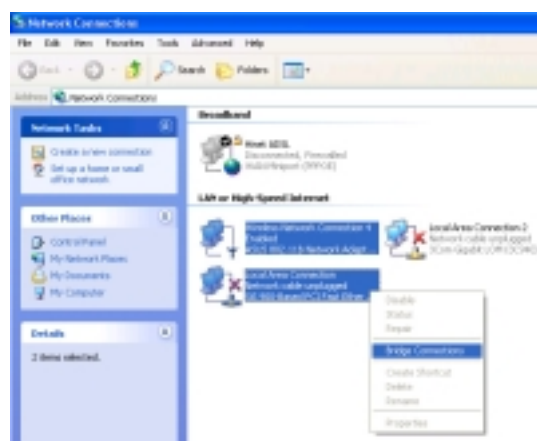
- A warning dialog box appears. Click **OK**.



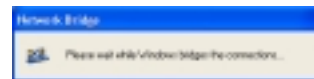
- The wizard displays the wired and wireless network connections to be added in a network bridge based on your configuration. Write down these network connections in a piece of paper. Click **OK**.



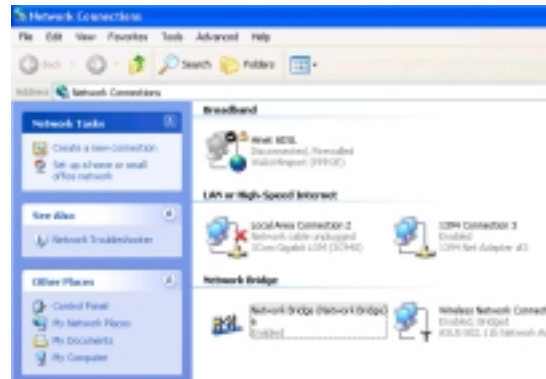
- Select the network connections to be bridged when the Network Connections window appears. Press the Control key while clicking the network connection icons to select. Right-click on any selected network icon to open a drop-down menu. Select **Bridge Connections**.



8. The selected network connections are bridged.



9. The bridged network connections are displayed in the **Network Connections** window.



10. Click **Finish** to close the setup wizard.



Refer to Windows® XP Help and Support Center for articles and help files on the Network Bridge function.

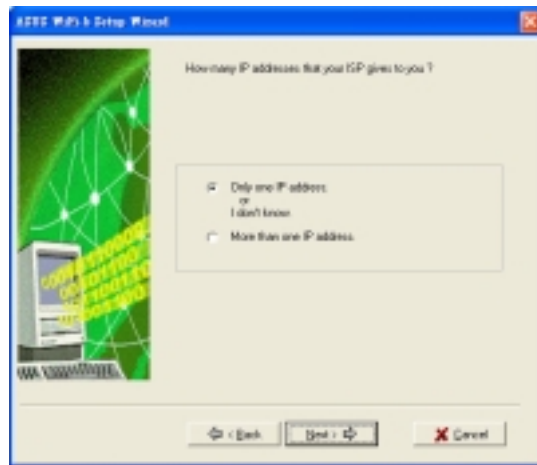
Direct internet connection

To enable ICS if your computer directly connects to the Internet:

1. Select the number of IP address assigned by your Internet Service Provider (ISP). Click **Next**.



The wizard will instruct you to enable ICS or create a network bridge if you are assigned two or more IP addresses.



2. The setup wizard automatically selects your broadband network connection. Check **Enable Firewall** to secure your network from unauthorized access. Click **Next**.
3. Refer to instructions 2 to 10 of the previous section to enable ICS.



3.3.2 Broadband connection that is always on

To enable ICS if you have an existing broadband network that is always on (DSL, cable modem, or LAN):

1. Select whether your computer directly connects to the Internet or through another computer or residential gateway. Click **Next**.



2. If your computer connects to the internet via another computer or residential gateway, follow steps 2 to 10 of the “**Internet connection via another computer or residential gateway**” section on pages 3-10 to 3-13.

Follow the steps in the “**Direct Internet connection**” section on page 3-14 if your computer connects directly to the Internet.

3.3.3 Dial-up modem

Follow these instructions to enable ICS if you are using a modem and a regular or ISDN phone line.

1. Select the dial-up connection from the drop-down list. Click **Next**.



If you do not have a dial-up connection, the wizard will instruct you to create one using the Windows® interface or the support CD from your Internet Service Provider (ISP).



2. Select whether your computer directly connects to the Internet or through another computer or residential gateway. Click **Next**.



3. If your computer connects to the internet via another computer or residential gateway, follow steps 2 to 10 of the “**Internet connection via another computer or residential gateway**” section on pages 3-10 to 3-13.

Follow the steps in the “**Direct Internet connection**” section on page 3-14 if your computer connects directly to the Internet.

Chapter 4

This chapter provides information on how to configure the WiFi-b™ using the Control Center utility.

Utility information

A decorative graphic consisting of several concentric, light gray circles centered on the page. A solid black triangle points from the bottom left towards the center of the circles.

4.1 The Control Center utility

The Control Center utility is a management software that launches applications and configures network settings. The Control Center Utility starts









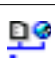



automatically when the system boots and displays the Control Center icon in the Windows® taskbar. The Control Center icon serves as an application launcher, and indicator of signal quality and Internet connection.

4.1.1 Control Center icons



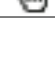
The Control Center icon indicates the quality of link to the access point and connection to the Internet. Refer to the table below for icon indications.

Station Mode


Infrastructure Network Mode (WiFi-b™ to an access point)

 Excellent link quality and connected to the Internet	 Excellent link quality but not connected to the Internet
 Good link quality and connected to the Internet	 Good link quality but not connected to the Internet
 Fair link quality and connected to the Internet	 Fair link quality but not connected to the Internet
 Poor link quality but connected to the Internet	 Poor link quality and not connected to the Internet
 Not linked but connected to the Internet	 Not linked and not connected to the Internet

Ad-Hoc Network Mode (WiFi-b™ to other Wi-Fi device)

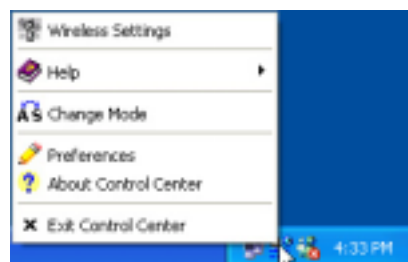
 Linked
 Not Linked
 Connected to the Internet

Soft Access Point Mode

 WiFi-b™ is in soft access point (Soft AP) mode.

4.2 Control Center Right-click menu

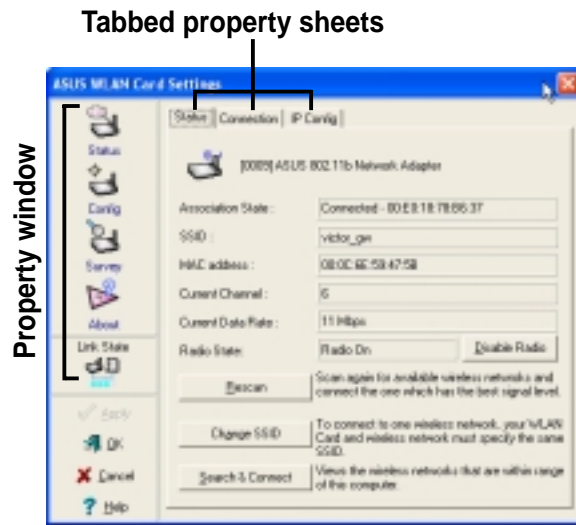
Right-clicking the Control Center icon displays the right-click menu. The following sections describe the right-click menu items.



4.2.1 Wireless LAN Card Settings

The Wireless LAN Card Settings is the main interface that allows users to control the ASUS WiFi-b™. Use the Wireless Settings to view the operational and connection status, or to modify the WiFi-b™ configuration.

The Wireless Settings window is composed of the property window and tabbed property sheets. Click the icons in the property window to display their tabbed property sheets.



Status - Status Tab

The Status Tab provides general information on the WiFi-b™ card.

Association State. This field displays the connection status and MAC address of the network where the system is connected.

Service Set Identifier (SSID). This field displays the SSID of the network which the card is associated with or is intending to join. The **SSID** is a group name shared by every member of a wireless network. Only client PCs with the same SSID are allowed to establish a connection.

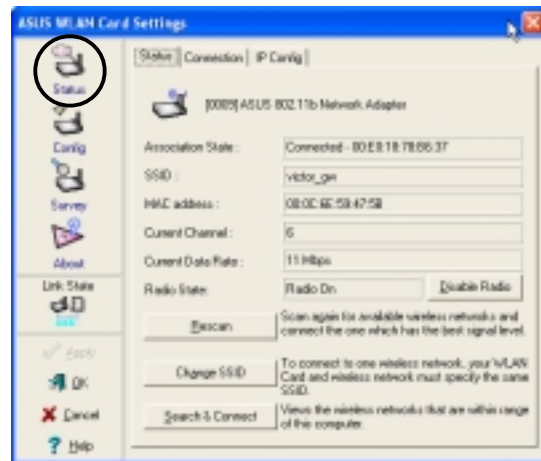
The **MAC Address** field displays the hardware address of a device connected to a network.

The **Current Channel** field displays the radio channel that the card is currently tuned. The channel changes as WiFi-b™ scans the available channels. See the Appendix for channel information.

The **Current Data Rate** field displays the data transfer rate between the WiFi-b™ card and the access point.

The **Radio State** field displays the radio communication status. Click the **Disable Radio** button if you wish to disable radio communication with an access point or a Wi-Fi device.

Rescan button - Click to allow WiFi-b™ to scan available wireless networks and to connect to the network with the best signal quality.



Change SSID button - Click to change the SSID. Clicking this button opens the Config-Basic window. See “Config-Basic Tab” on next page.

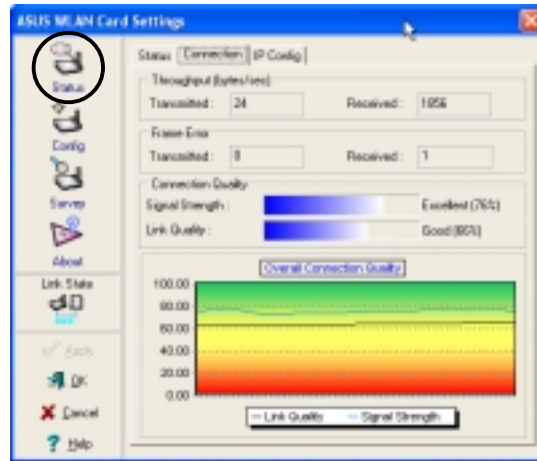
Search and Connect button - Click to view all wireless networks within the range of your system. Clicking this button opens the Site Survey window. See page 4-8.

Status - Connection Tab

The Connection Tab provides real-time information on connection throughput, frame errors, signal strength, link quality and overall connection quality in graph representation.



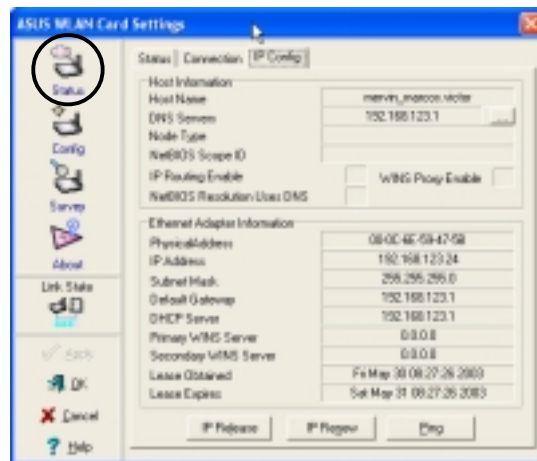
On soft AP mode, only the Throughput and Frame Error fields are displayed.



Status - IP Config Tab

The IP Config tab displays the current host and Ethernet adapter configurations. IP Config displays TCP/IP information including the IP address, subnet mask, default gateway, DNS and Windows Internet Naming Service (WINS) configurations.

Use the IP Config Tab to verify your network settings.



IP Release. Click to release the DHCP IP address for the WiFi-b™ card.

IP Renew. Click to renew the DHCP IP address for the WiFi-b™ card.

Ping. Click to display the Ping tab. Use ping to verify a connection to a particular host name or IP address.



The IP Release and IP Renew buttons may only be used on a WiFi-b card that is configured with DHCP.

Status - Ping Tab

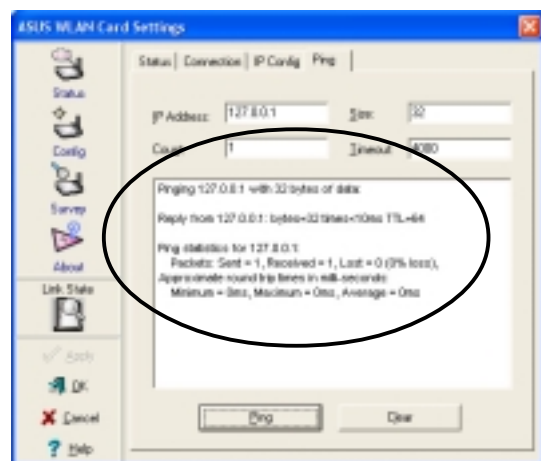
The Ping tab allows you to verify the connection of the host computer with another computer in the network. To ping a connection:

1. Type the IP address of the connection you want to verify in the **IP Address** field.
2. Configure the ping session by assigning the size and count of packet to send, and the time limit for a ping session to continue (in milliseconds).
3. Click the **Ping** button.

During the ping session, the **Ping** button toggles into a **Stop** button. Click **Stop** anytime to cancel the ping session.

The session field displays information on the verified connection including the roundtrip time (minimum, maximum, and average) and packets sent, received, and lost after a ping session.

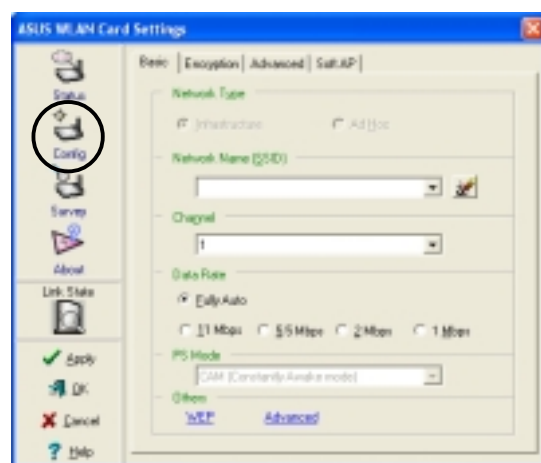
Click the **Clear** button to clear the session field.



Config - Basic Tab

The **Basic** tab provides general information on network types and other configurations.

Network Type. Select which type of network you wish to use. Select *Infrastructure* mode to establish a connection with an access point (AP). In this mode, your system can access wireless LAN and wired LAN (Ethernet) via the AP. Select the *Ad Hoc* mode to communicate directly with other mobile clients within the WiFi-b™ range.



Network Name - Displays the network SSID. The network SSID is a string use to identify a wireless LAN. Assign different SSIDs to segment the wireless LAN and increase network security. Set the SSID to a null string to allow your station to connect to any available access point. Null string may not be used in Ad Hoc mode.

Channel. In Infrastructure mode, WiFi-b™ automatically tunes in to the access point channel. In Ad Hoc mode, select a channel that is allowed for use in your country/region. See the Appendix for channel information.

Data Rate. Select *Fully Auto* to allow WiFi-b to adjust to the most suitable connection. You may also fix data transfer rates to 11, 5.5, 2 and 1 Mbps.

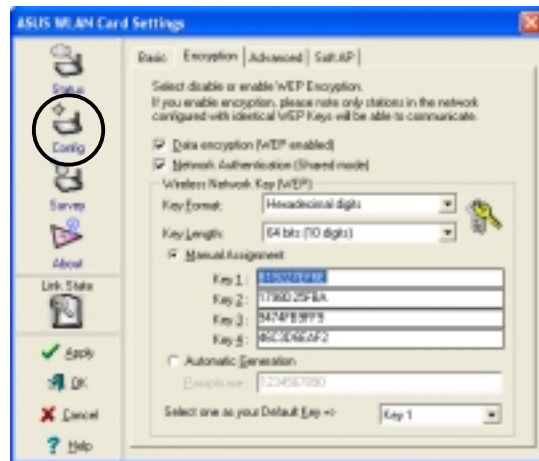
PS Mode. This field allows control of the WiFi-b™ card power saving features. The *CAM (Constantly Awake mode)* is recommended for systems running on AC power. Other options include *MAX_PSP (Maximum Power Savings)* and *Fast_PSP (Fast power-saving mode)*

Others. Click the *WEP* or *Advanced* link to open the Encryption or Advanced property tab sheet.

Config - EncryptionTab

Wireless data transmissions between your WiFi-b™ and the AP are secured using the Wired Equivalent Privacy (WEP) encryption. Check the *Data encryption (WEP enabled)* option to assign the WEP keys.

Check the *Network Authentication (Shared Mode)* option if you wish to use a network key to authenticate a preferred wireless network. Unchecking this option allows the network to operate on an Open System mode.



Key Format allows you to set a hexadecimal digit or ASCII character WEP key.

Key Length allows you to choose a 64-bit or a 128-bit WEP key. A 64-bit encryption contains 10 hexadecimal digits or 5 ASCII characters. A 128-bit encryption contains 26 hexadecimal digits or 13 ASCII characters.



64-bit and 40-bit WEP keys use the same encryption method and can interoperate on wireless networks. This lower level of WEP encryption uses a 40-bit (10 hexadecimal digits assigned by the user) secret key and a 24-bit Initialization Vector assign by the WiFi-b™. 104-bit and 128-bit WEP keys use the same encryption method.



All wireless clients in a network must have identical WEP keys to communicate with each other or with an access point.

Two ways to assign WEP keys

Manual Assignment. For a 64-bit encryption, enter 10 hexadecimal digits (0~9, a~f, A~F) or 5 ASCII characters in each of the four WEP keys. For 128-bit encryption enter 26 hexadecimal digits (0~9, a~f, A~F) or 13 ASCII characters in each of the four WEP keys.

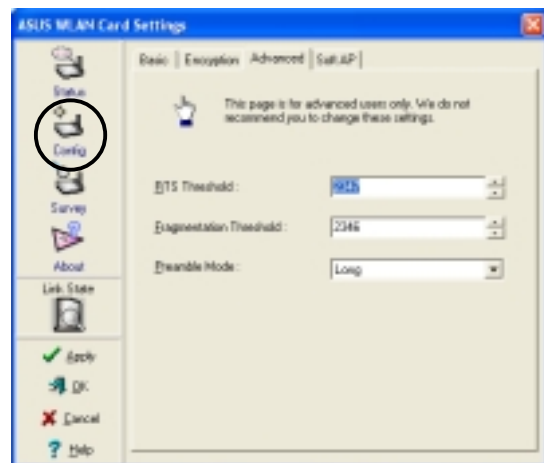
Automatic Generation. Type a combination of up to 64 letters, numbers, or symbols in the Passphrase field. The Wireless Settings utility uses an algorithm to generate four WEP keys based on the typed combination.



- After assigning the WEP keys, click **APPLY** to save and activate the encryption. Manually assigned encryptions are more secure than automatically generated encryptions.
- Use Manual Assignment instead of Automatic Generation if you are not sure whether other wireless clients use the same algorithm as that of WiFi-b™.
- Keep a record of the WEP encryption keys.

Config - Advanced

The **Advanced** tab displays the WiFi-b™ card advance settings. It is recommended that you do not make any changes on these settings.



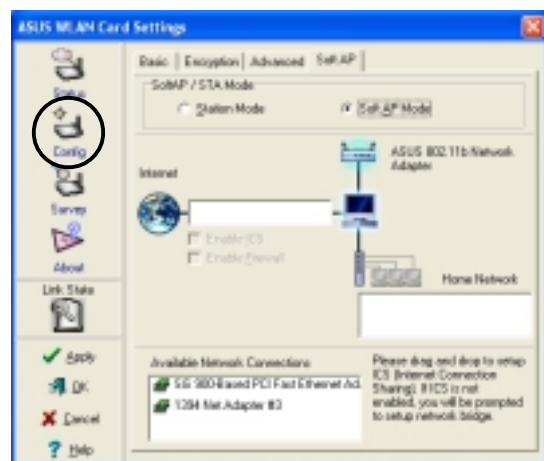
Config - Soft AP

The **Soft AP** tab displays the Internet Connection Sharing (ICS) and bridge features of the WiFi-b™ card.



The Soft AP tab appears only on systems running on Windows® XP.

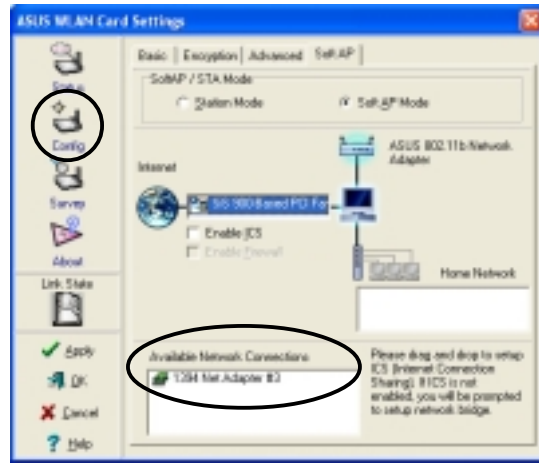
SoftAP/STA Mode. This field allows you to select the WiFi-b™ card mode. Select Station Mode if you wish to connect to an access point or to other wireless devices (Ad Hoc mode). Select SoftAP Mode to configure your computer as a soft access point. Fields in the network diagram are enabled when Soft AP mode is selected.



Enable ICS. This option activates after an available network connection is placed in the Internet field. Check this option if you want to share a single Internet connection with other computers in a wireless network. See page 4-16 for details. When disabled, the available network connection on the Internet field is bridged with the WiFi-b™ card. Refer to page 4-19 to setup a network bridge.

Enable Firewall. This option is active when ICS is enabled. Check this item to activate the firewall and prevent unauthorized access to your home or small office network.

Available Network Connections. This field displays all available network connections in the host computer. To enable Internet Connection Sharing (ICS), drag the network connection to the Internet box, then click Apply.



See section 4.4.2 “Soft Access Point (Soft AP) Mode” for details.

Site Survey

The **Site Survey** tab displays the available networks within the WiFi-b™ range. The following network settings are displayed:

BSSID - The IEEE MAC address of the available wireless networks.

SSID - SSID (service set identifier) of the network.

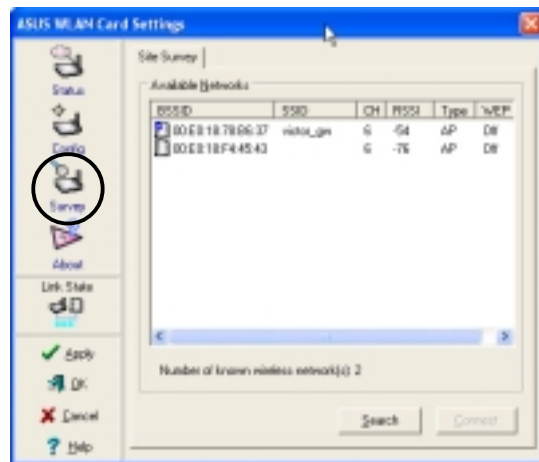
CH - Direct sequence channel used by the network.

RSSI - Received Signal Strength Indicator (RSSI) in dBm.

Type - wireless network mode. AP indicates an Infrastructure network type. STA indicates an Ad Hoc network type.

WEP - shows whether a network has an enabled (On) or disabled (Off) WEP encryption.

Select an available network and click **Connect** to establish connection. Click **Search** to rescan available networks.

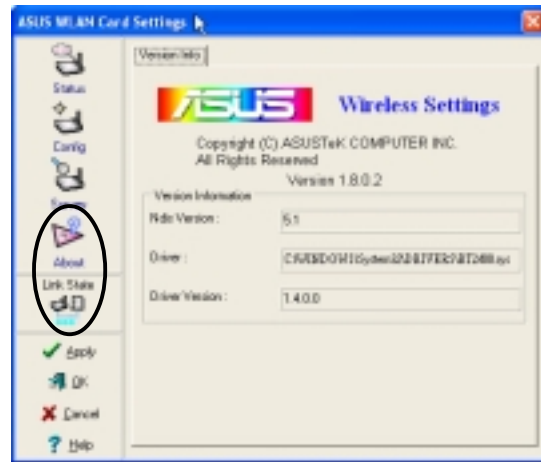


About

Click the **About** icon to view the software version, driver version, and copyright information.

Link State

Displays the current connection status of the WiFi-b™ card to the AP or to other Wi-Fi devices.



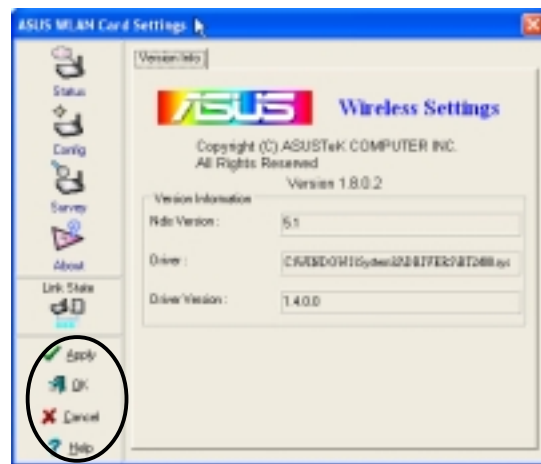
Command icons

Apply. Click to apply the changes made on WiFi-b™ configuration and settings.

OK. Click to close the Wireless Settings utility window.

Cancel. Click to cancel any changes made on WiFi-b™ configuration or settings. Clicking Cancel closes the Wireless Settings utility window.

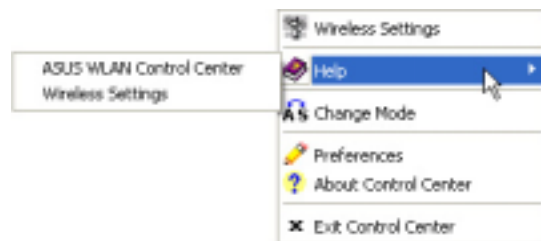
Help. Click to display the help menu.



4.2.2 Help Menu

The Control Center utility has a Help menu to guide you in using the Control Center and Wireless Settings utilities.

Right-click the Control Center icon, then select **Help**. Select a utility to display its help window.

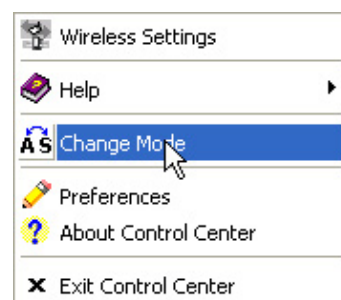


4.2.3 Change Mode

The Change Mode menu allows you to set the WiFi-b™ card in a Station (STA) or soft Access Point (AP) mode.

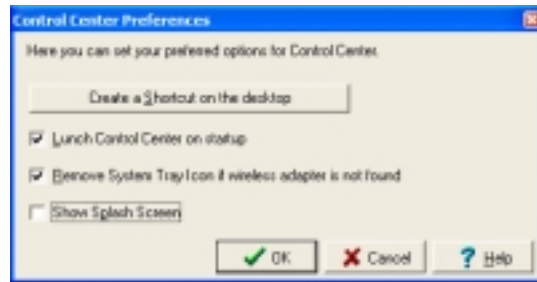


See page 4-13 “Soft Access Point (Soft AP) Mode” for details on the WiFi-b™ card soft AP function.



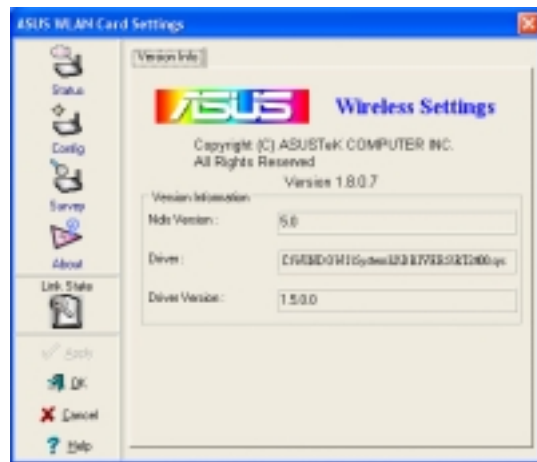
4.2.4 Preferences

The **Preferences** window allows you to customize the Control Center Utility settings.



4.2.5 About Control Center

The **About Control Center** menu displays the software and drivers version, and copyright information.



4.3 Control Center Left-click menu

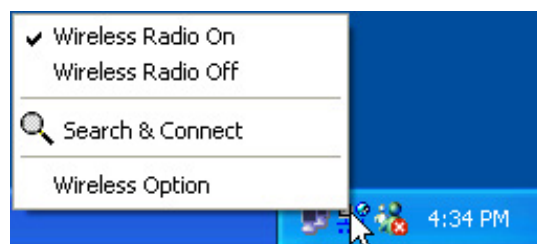
Left-clicking the Control Center icon displays the Left-Click Menu. The options are described below.

Wireless Radio On – Turns the WiFi-b™ radio ON.

Wireless Radio Off – Turns the WiFi-b™ radio OFF.

Search & Connect – View available wireless networks within range.

Wireless Option – Sets your Windows® XP wireless networking environment. See page 18 for details.



The Control Center Left-click menu is available only when WiFi-b™ is set to Station Mode (STA).

4.4 Configuring WiFi-b™ by Wireless Settings utility

The Wireless Settings utility allows you to set your WiFi-b™ card in Station (STA) or Soft Access Point (Soft AP) mode. In STA mode, your WiFi-b™ connects to an access point to access a wireless network or the Internet. In Soft AP mode, your WiFi-b™ transmits and receives signals to and from other WiFi devices in a wireless network. The Soft AP feature is available only on systems running on Windows® XP.

4.4.1 Station Mode (STA)

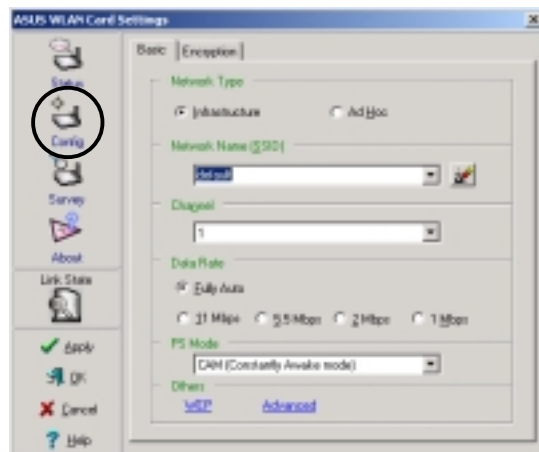
Follow these instructions to set your WiFi-b in Station (STA) mode.

Windows® 98SE/ME/2000 OS

1. Launch the Wireless Settings utility by double-clicking the **Control Center** icon in the Windows taskbar.
2. Click the **Survey** icon from the property window to display the available access points or other Wi-Fi device.
3. Select the AP with the best signal quality by referring to the RSSI column. The higher the RSSI, the better the signal quality.
4. Click the **Config** icon, then select the **Basic** tab to configure your network. Select **Infrastructure**, then click **Apply**.
5. Set the WiFi-b™ Network Name (SSID). The WiFi-b™ SSID must be identical with the SSID of the selected AP.



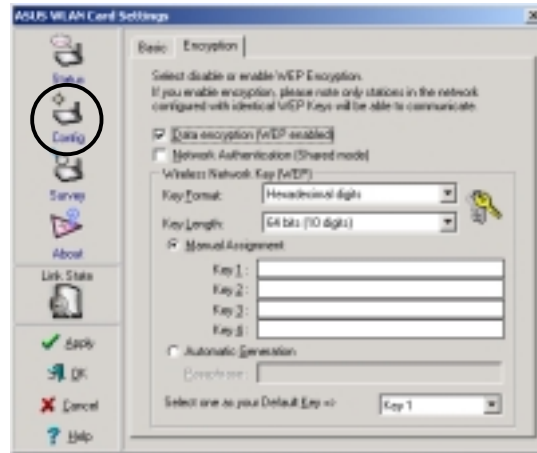
NOTE. Setting the SSID to a null string allows your WiFi-b™ to connect to any available access point.



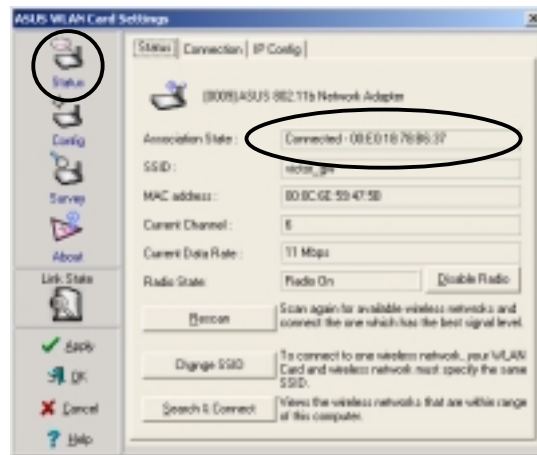
- Click the **Encryption** tab to set the WiFi-b™ encryption if the selected AP has an enabled WEP encryption.



Refer to the **Site Survey** window to determine whether the selected AP has an enabled (ON) or disabled (OFF) WEP encryption. Refer to page 4-6 on how to configure WEP encryptions.



- To check if WiFi-b™ is associated with the selected AP, click the **Status** icon in the property window, then select the **Status** tab. Look for the Associated State field to confirm.



Windows® XP OS

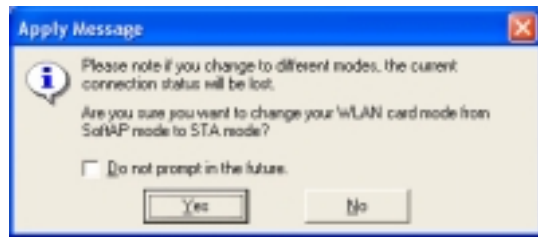
Do any of the following to set your WiFi-b™ in station mode:

Enter the Wireless Settings utility

- Double-click the **Control Center** icon in the Windows taskbar to open the Wireless Settings utility.
- Click the **Config** icon in the property window, then select the **Soft AP** tab. Select **Station Mode**.



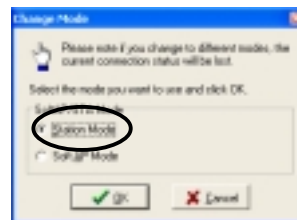
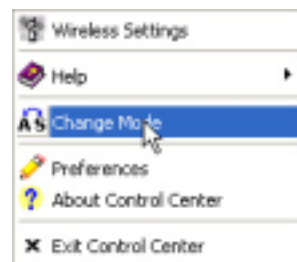
3. The following confirmation dialog box appears when you switch from Soft AP mode to Station Mode. Click **Yes**.



4. Follow steps 2 to 7 of the previous section to set the WiFi-b™ in STA mode.

Use the Change Mode menu

1. Right-click the **Control Center** icon in the Windows taskbar to display the right-click menus. Select **Change Mode**.
2. Select **Station Mode** when the Change Mode window appears. Click **OK**.



3. Follow steps 2 to 7 of the previous section to set the WiFi-b™ in STA mode.

4.4.2 Soft Access Point Mode (Soft AP)

You may set the WiFi-b™ card in soft access point mode. As soft AP, WiFi-b™ can support up to 31 wireless clients in a home or small office network.

System requirements

Before setting your WiFi-b™ as soft AP make sure your system meets the following requirements:

- Windows® XP operating system

Wireless clients in home or small office network must have:

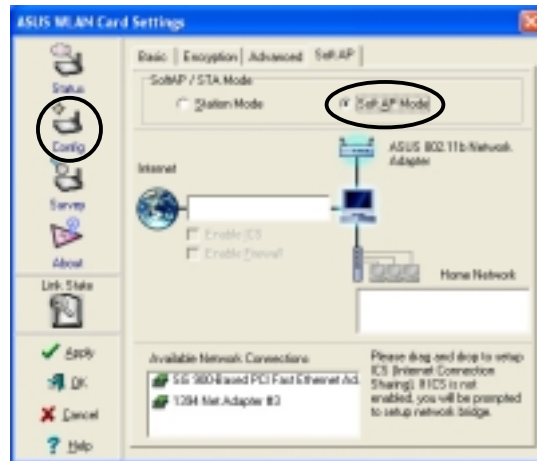
- An installed IEEE 802.11b compliant network interface card
- Windows® 98SE/ME/2000/XP operating system

Setting your WiFi-b™ in Soft Access Point (Soft AP) mode

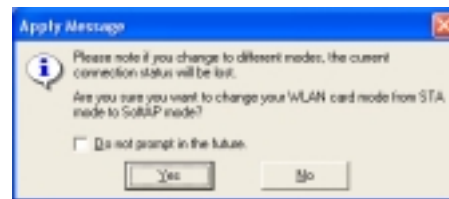
Do any of the following to set your WiFi-b™ in soft AP mode:

Enter the Wireless Settings utility

1. Double-click the **Control Center** icon in the Windows taskbar to open the Wireless Settings utility.
2. Click the **Config** icon in the property window of the Wireless Settings utility, then select the **SoftAP** tab. Select **Soft AP Mode**, then click **Apply**.

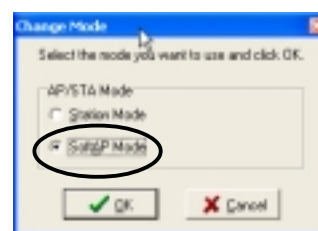
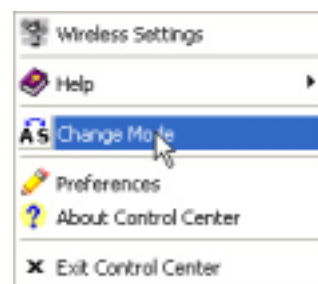


3. A confirmation window appears click **Yes**.



Use the Change Mode menu

1. Right-click the **Control Center** icon in the Windows taskbar to display the right-click menus. Select **Change Mode**.
2. Select **Soft AP Mode** when the Change Mode window appears. Click **OK**.
3. The Soft AP icon replaces the Control Center utility icon in the Windows® taskbar.



Other Soft AP settings

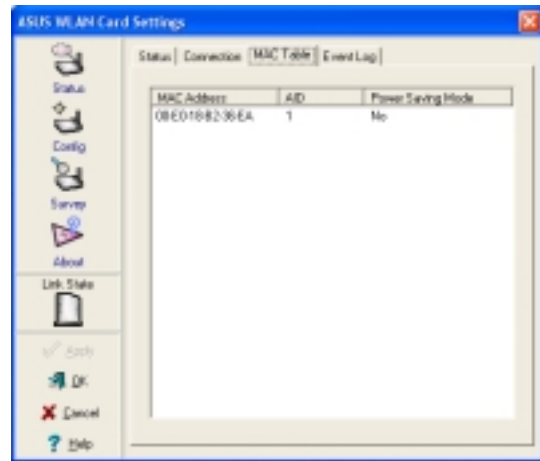
When in Soft AP mode, two additional tabbed property sheets are added to the **Status** settings of the Wireless Settings utility.

MAC Table

The **MAC Table** tab displays the MAC address of a wireless device connected to the soft AP.

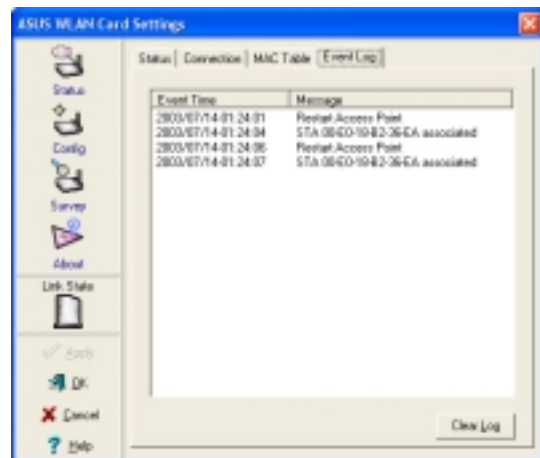
AID - shows the Association ID of a wireless device connected to the soft AP.

Power Saving Mode - displays the Power Saving Mode used by the wireless device connected to the soft AP.



Event Log

The **Event Log** tab displays detected system events including the date and time of the event and event type. Click **Clear Log** to clear the event log window.



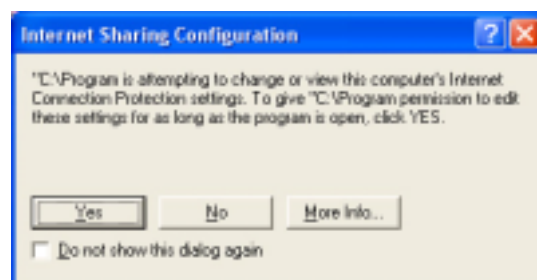
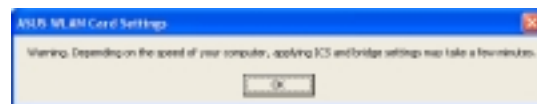
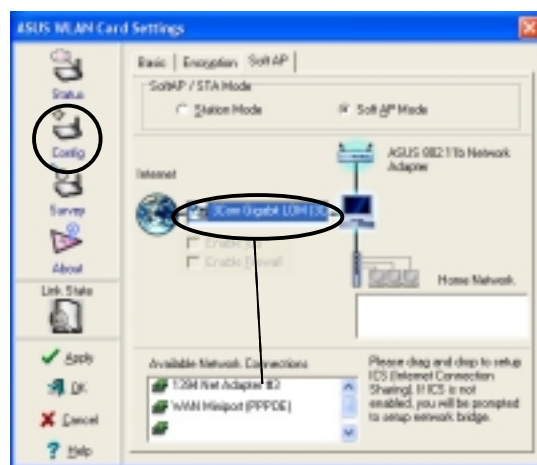
4.5 Internet Connection Sharing (ICS)

After setting the WiFi-b™ card on Soft AP mode, you may enable Internet Connection Sharing (ICS). ICS is a Windows® XP feature allowing several computers in a wired or wireless network to share a single Internet connection. With ICS, other wireless clients in a home or small office network rely on the WiFi-b™ for Internet access. Follow these instructions to enable ICS.

4.5.1 Connect to the Internet using a broadband connection that is always on

To enable ICS if your computer connects to the Internet using a broadband that is always on:

1. Open the Wireless Settings utility. Select **Config** from the property window, then select the **Soft AP** tab.
2. Select the built-in 3Com Gigabit LAN connection from the **Available Network Connections** field, then drag it to the **Internet** field.
3. Check **Enable ICS** and **Enable Firewall**, then click **Apply**.
4. Click **OK** when this dialog box appears.
5. An **Internet Sharing Configuration** dialog box appears. Click **Yes**. The Internet network connection and the WiFi-b™ card is bridged. See section 4.6 “**Network Bridge**” for details.



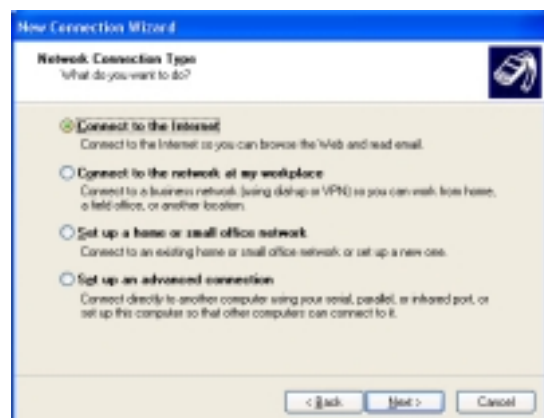
Wireless clients must be set to Infrastructure network type and STA (station) mode to connect to the Internet via the soft AP. The SSID and WEP keys of client computers must be identical with that of the soft AP.

4.5.2 Connect to the Internet using a broadband or dial-up connection that requires an account

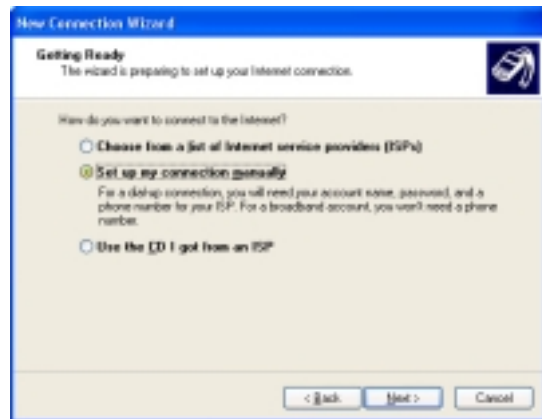
If the host computer with the WiFi-b™ card connects to the Internet using a broadband or dial-up connection that requires an account, create a broadband (PPPoE) or dial-up network connection using the Windows® XP interface before enabling ICS.

To create a broadband connection:

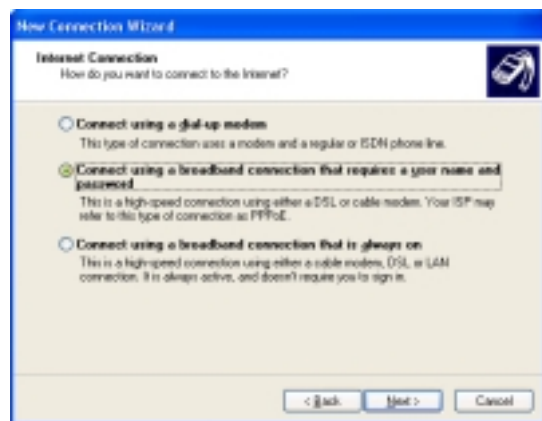
1. Open the Network Connections window by clicking **Start > Connect To > Show all connections** from the Windows® desktop.
2. Click **File** from the menu, then select **New Connection**.
3. A **New Connection Wizard** appears. Click **Next**.
4. When prompted, select the Network connection type. Select **Connect to the Internet**, then click **Next**.



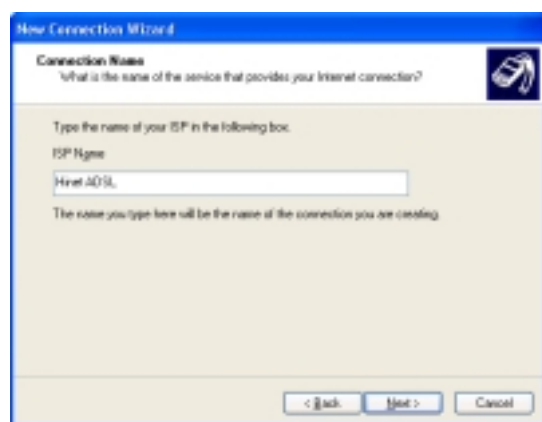
5. Select **Set up my connection manually**, then click **Next**.



6. Depending on your network setup, select **Connect using a broadband connection that requires a user name and password** or **Connect using a dial-up modem**, then click **Next**.



7. Enter the ISP name, then click **Next**.



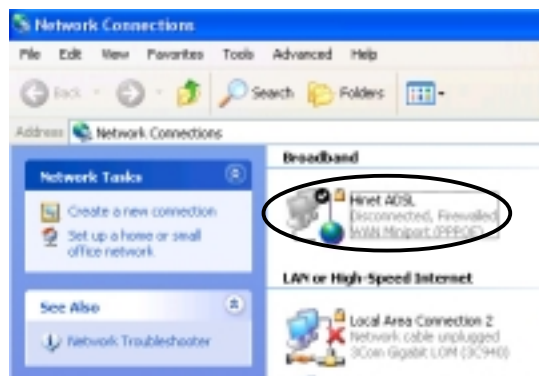
8. Enter the user name and password assigned by your ISP, then check all settings below the user name and password fields. Click **Next**.



- Click **Finish** when the wizard completes creating the connection.



- The created connection is displayed in the **Network Connections** window. Return to the **Wireless Settings** utility. Select the created connection from the Available Network Connections, then drag it to the Internet field. Refer to the steps in section 4.5.1 to enable ICS.



4.6 Network Bridge

Host computers with multiple network adapters may use the network bridge function to connect several LAN segments. A LAN segment is a physical connection between a host computer and a client computer. Network bridging is a cost-effective method of connecting LAN segments since it does not require expensive hardware such as routers and technical expertise for configuring Internet protocol (IP) addresses. Network bridge is essential in enabling ICS among wireless clients in a home network.



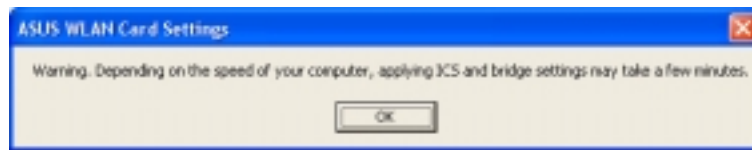
You must have Administrator privileges before you could create a network bridge.

To bridge a wired network connection to the WiFi-b™:

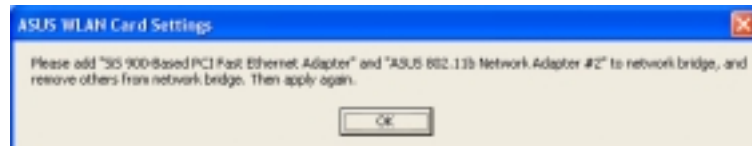
- Open the Wireless Settings utility. Select **Config** from the property window, then select the **Soft AP** tab.
- Select a network connection from the Available Network Connections box, then drag the connection to the Internet field. Click **Apply**.



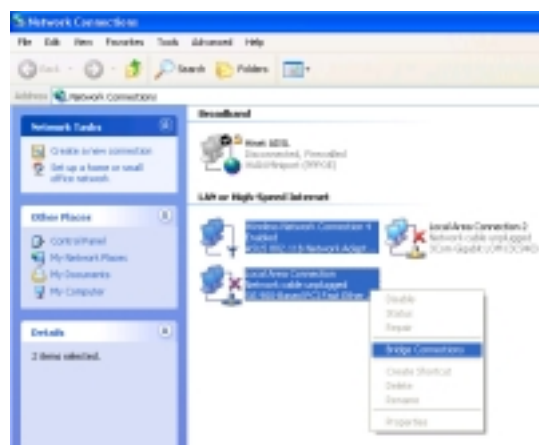
3. A warning message appears. Click **OK**.



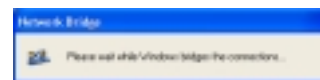
4. The Wireless Settings utility displays the wired and wireless network connections to be added in a network bridge based on your configuration. Write down these network connections in a piece of paper. Click **OK**.



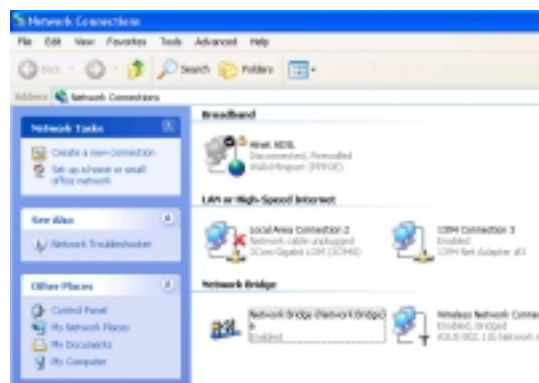
5. Select the network connections to be bridged. Press the Control key while clicking the network connection icons to select. Right-click on any selected network icon to open a drop-down menu. Select **Bridge Connections**.



6. Wait while the selected network connections are bridged.



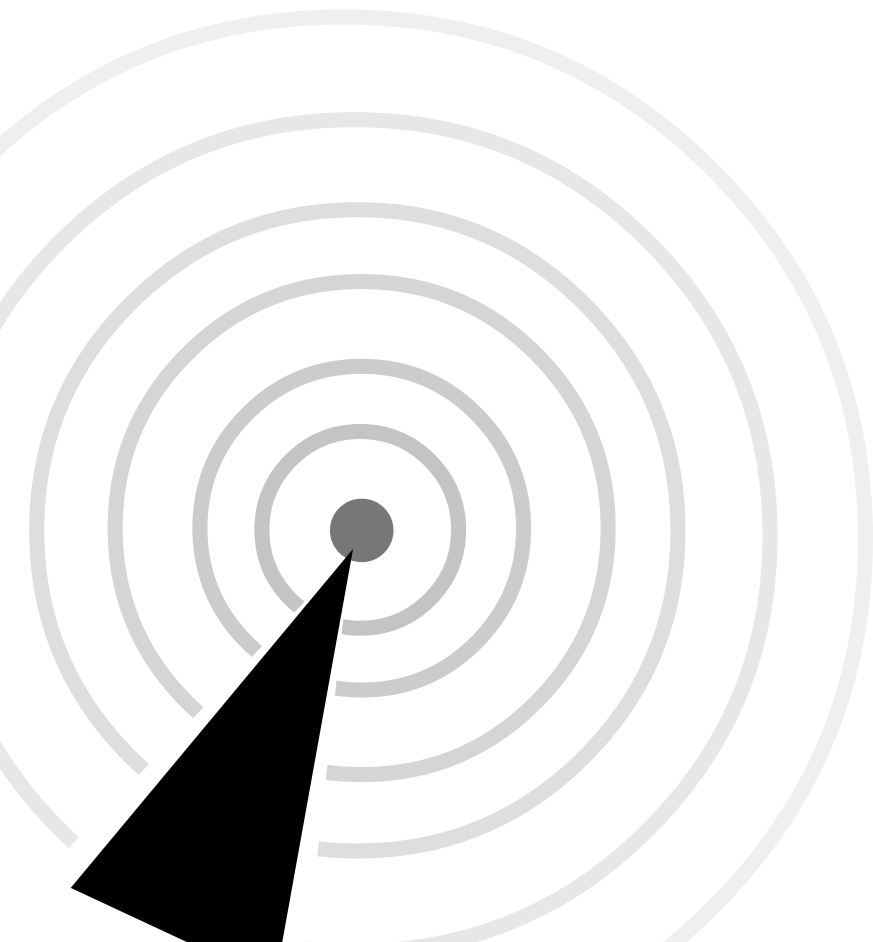
7. The bridged network connections are displayed in the **Network Connections** window.



Only LAN connections may be bridged with the WiFi-b™ card. The Wireless Settings utility will instruct you to change your settings if you bridge a non-LAN connection with the WiFi-b™.

Appendix

The appendix contains sections for troubleshooting and information on IEEE 802.11b channels and frequencies.



A.1 Troubleshooting



This troubleshooting guide provides answers to some common problems which you may encounter while installing and/or using ASUS Wireless LAN card products. These problems requires simple troubleshooting that you can perform by yourself. Contact the Wireless LAN Technical Support if you encounter problems not mentioned in this section.

Problem	Action
My computer does not recognize the installed WiFi-b™ card.	<p>Verify if the WiFi-b™ card drivers are properly installed by following these instructions:</p> <ol style="list-style-type: none">1. Open the Control Panel window from the Windows® desktop.2. Double-click on the System icon.3. <i>Windows® 98SE/Me users:</i> Select the Device Manager tab. <i>Windows® 2000/XP users:</i> Select the Hardware tab then click the Device Manager button.4. Click the “+” symbol preceeding the Network Adapters item, then check the ASUS 802.11b Network Adapter or ASUS 802.11g Network Adapter item. A yellow exclamation point or a red plus sign preceeding the network adapter means that the device driver is not properly installed. Re-install the WiFi-b™ card driver following the instructions below.
A yellow exclamation point or a red plus sign appears on the ASUS 802.11b Network Adapter or ASUS 802.11g Network Adapter item.	<p>The WiFi-b™ driver is not properly installed. Follow these instructions to uninstall and re-install the driver.</p> <ol style="list-style-type: none">1. Insert the Support CD into the CD-ROM drive.2. When the ASUS WiFi-b™ installation window appears, click “Uninstall ASUS WLAN Card Utilities/Driver” option.

Problem	Action
<p>I cannot connect to an Access Point.</p>	<p>3. Restart your computer and repeat the WiFi-b™ software installation following the instructions contained in this User Guide.</p> <ul style="list-style-type: none"> • Check if the Network Type of the WiFi-b™ card is set to Infrastructure mode. • Check if the WiFi-b™ has the same Service Set Identifier (SSID) as that of the AP. • Check if the WiFi-b™ card and the AP have the same Encryption. If WEP encryption is enabled, set the same WEP keys for the WiFi-b™ and the AP. • Check if the MAC address of the WiFi-b™ card is added in the AP Authorization Table. Inquire this with your LAN administrator. • There is poor signal reception. Re-orient the WiFi-b™ antenna.
<p>I can connect to an Access Point but I cannot connect to the Internet.</p>	<ul style="list-style-type: none"> • Check if the WiFi-b™ card and the AP have the same Encryption. If WEP encryption is enabled, set the same WEP keys for the WiFi-b™ and the AP. • Make sure the network protocol parameters (IP address, subnet mask, gateway, and DNS) of your computer are correctly set. • Check the proxy settings of the web browser.

Problem	Action
<p>I cannot connect to another station (computer with a wireless LAN device).</p>	<ul style="list-style-type: none"> • Check if the Network Type of the WiFi-b™ card is set to Ad Hoc mode. • Check if the WiFi-b™ has the same Service Set Identifier (SSID) with that of the other station. • Check if the WiFi-b™ card and the other station have the same Encryption. If WEP encryption is enabled, set the same WEP keys for the WiFi-b™ and the AP. • There is poor signal reception. Place the WiFi-b™ antenna nearer to the station.
<p>I cannot connect to other computers linked via an Access Point or Ad Hoc network.</p>	<ul style="list-style-type: none"> • Check if the WiFi-b™ card and the other APs and/or clients have the same Encryption. If you enable WEP encryption, you must set the same WEP keys for the WiFi-b™ card and the other AP/s and/or clients. • Check the TCP/IP settings (IP address, subnet mask, gateway, and DNS) of your computer. • Enable file and printer sharing in each client computer to allow file sharing.
<p>I always have poor link quality and low signal.</p>	<p>Observe the following to achieve better link quality and stronger signal:</p> <ul style="list-style-type: none"> • Keep the WiFi-b™ away from microwave ovens and large metal objects to avoid radio interference. • Reorient the WiFi-b™ antenna. • Shorten the distance between the WiFi-b™ card and the AP/station.

A.2 Channels

The IEEE 802.11b standard for Wireless LAN allocated the 2.4 GHz frequency band into 14 overlapping operating **channels**. Each channel corresponds to a different set of frequencies. The table below shows the center frequencies of each channel.

Channel	Center Frequency	Channel	Center Frequency
1	2.412 GHz	8	2.447 GHz
2	2.417 GHz	9	2.452 GHz
3	2.422 GHz	10	2.457 GHz
4	2.427 GHz	11	2.462 GHz
5	2.432 GHz	12	2.467 GHz
6	2.437 GHz	13	2.472 GHz
7	2.442 GHz	14	2.484 GHz



If several WiFi devices are operating in the same vicinity, the distance between the center frequencies of channels used must be at least 25 MHz to avoid interference.

The number of channels available for the WiFi-b™ varies by country/region. Refer to the table below to determine the number of channels available in your location.

Country/Region (Regulating Body)	Available Channels
Australia (ACA)	Channels 1 to 13
Belgium (RTT&E/EMC/LVD)	Channels 1 to 13
Bulgaria (RTT&E/EMC/LVD)	Channels 1 to 13
Canada (CSA/cJUL 950 3rd Edition)	Channels 1 to 11
China (MI)	Channels 1 to 11
Cyprus (RTT&E/EMC/LVD)	Channels 1 to 13
Czech Republic (RTT&E/EMC/LVD)	Channels 1 to 13
Denmark (RTT&E/EMC/LVD)	Channels 1 to 13
Finland (RTT&E/EMC/LVD)	Channels 1 to 13
France (RTT&E/EMC/LVD)	Channels 1 to 13
Germany (RTT&E/EMC/LVD)	Channels 1 to 13
Greece (RTT&E/EMC/LVD)	Channels 1 to 13
Hong Kong (OFTA)	Channels 1 to 13
Hungary (RTT&E/EMC/LVD)	Channels 1 to 13
Iceland (RTT&E/EMC/LVD)	Channels 1 to 13
Ireland (RTT&E/EMC/LVD)	Channels 1 to 13
Italy (RTT&E/EMC/LVD)	Channels 1 to 13
Japan (TELEC)	Channels 1 to 14

(continued next page)

Country/Region (Regulating Body)	Available Channels
Luxembourg (RTT&E/EMC/LVD)	Channels 1 to 13
Malaysia (SIRIM/CMC)	Channels 1 to 13
Mexico	Channels 9 to 11
Netherlands Antilles (RTT&E/EMC/LVD)	Channels 1 to 13
Netherlands/Holland (RTT&E/EMC/LVD)	Channels 1 to 13
New Zealand (PTC)	Channels 1 to 13
Norway (RTT&E/EMC/LVD)	Channels 1 to 13
Portugal (RTT&E/EMC/LVD)	Channels 1 to 13
Saudi Arabia	Channels 1 to 13
Singapore	Channels 1 to 13
South Korea (KS)	Channels 1 to 13
Spain (RTT&E/EMC/LVD)	Channels 1 to 11
Sweden (RTT&E/EMC/LVD)	Channels 1 to 13
Switzerland (RTT&E/EMC/LVD)	Channels 1 to 13
Taiwan (DGT)	Channels 1 to 11
Turkey (TTAS)	Channels 1 to 13
United Kingdom (RTT&E/EMC/LVD)	Channels 1 to 13
United States (FCC)	Channels 1 to 11



Channels 1,6 and 11 are independent and do not overlap each other. It is recommended to tune your WiFi-b™ card to these channels.