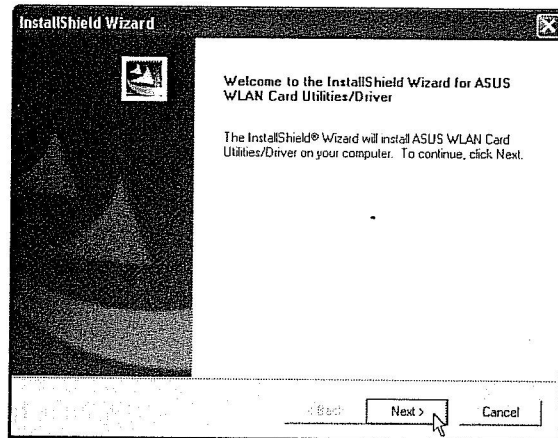
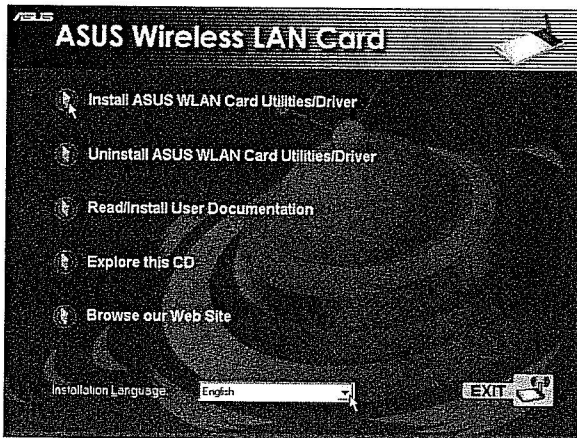
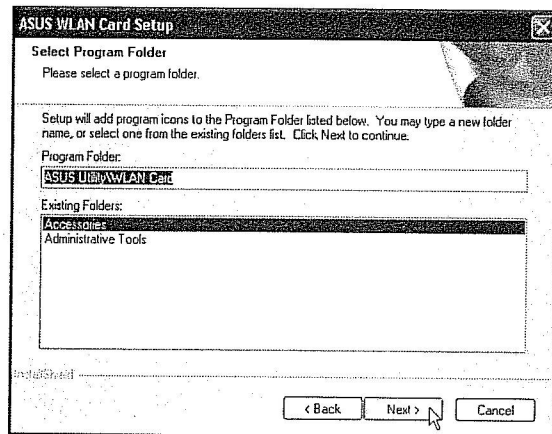
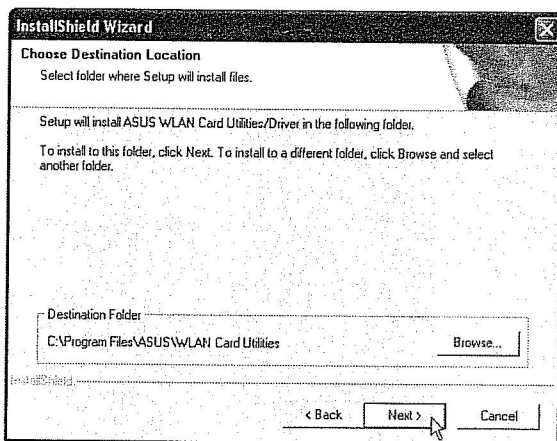


Installing the ASUS WLAN Card Utilities & Driver

1. Insert the ASUS WLAN Card support CD and an autorun menu will appear. If your autorun is disabled, double click **SETUP.EXE** in the root directory of the support CD.

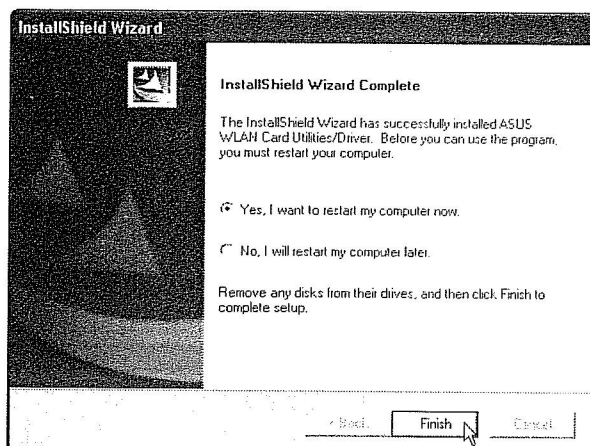


2. From the autorun menu, select your language and click **Install ASUS WLAN Card Utilities / Driver**.
3. Click **Next** on the Welcome screen.

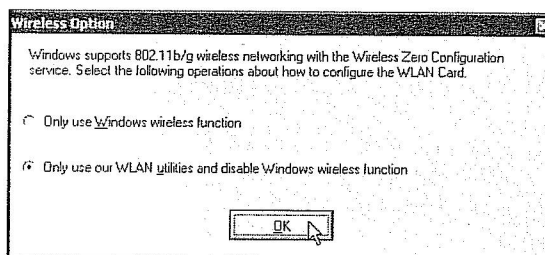


4. Click **Next** to use the default Destination Folder or click **Browse** to select another folder.
5. Click **Next** to place icons in the default program folder or type another folder name.

Quick Install Guide



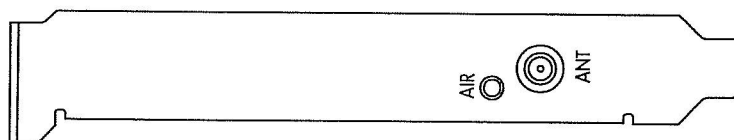
6. When Setup is complete, click **Finish** to exit the installation wizard.



7. When the program is launched for the first time, you will be asked which function to use. Select to use our WLAN utilities for more functionality.

Reading the ASUS WLAN Status Indicators

The ASUS WLAN card consists of one AIR indicator that shows the status of the ASUS WLAN Card.

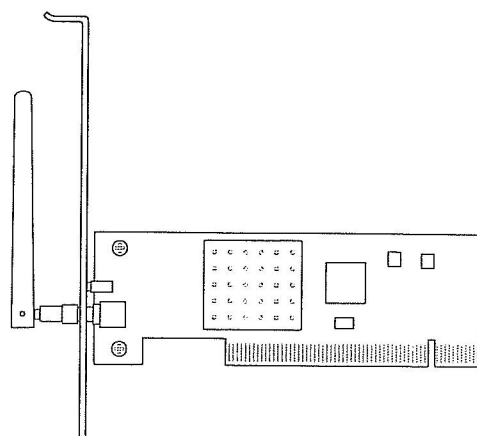


OFF: No wireless activity.

Blinking: Transmitting or receiving wireless data.

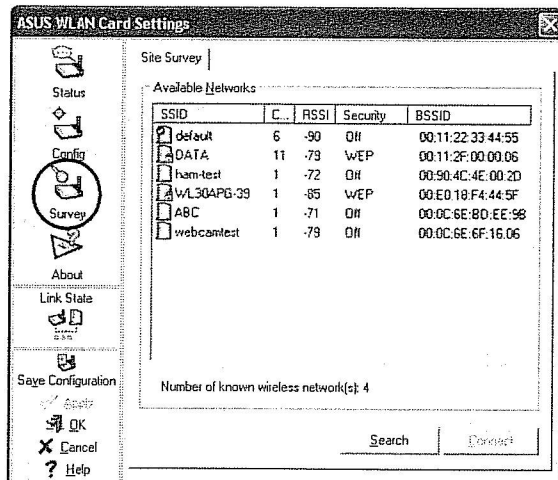
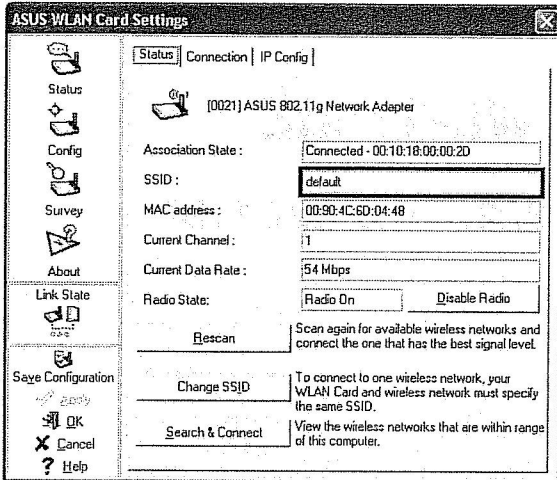
Orientating the Antenna

The ASUS WLAN Card has one external antenna. It is recommended that you adjust the external antenna straight up for maximum range and higher link quality.

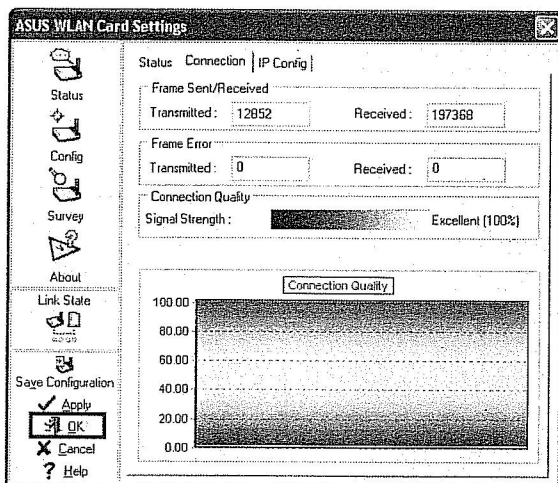
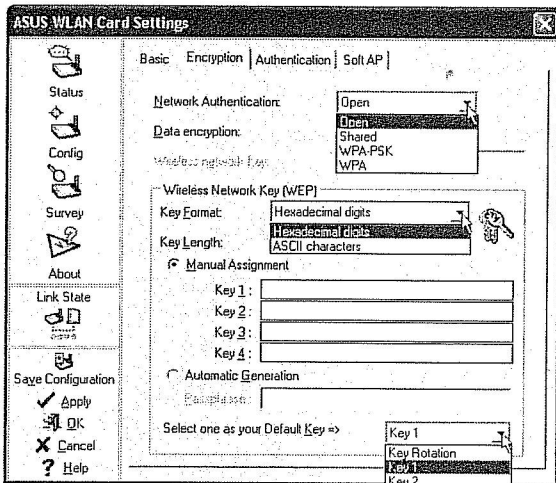


ASUS WLAN Utility Quick Start

After installing the ASUS WLAN driver and utility, you may need to make some settings before being able to use your wireless connection.



1. Set the Network Name (SSID) to the same name as the SSID set in your access point.
2. Use "Site Survey" if you don't know the name of your access point(s).



3. Encryption settings must also match those set in the access point. Talk with your network administrator if necessary.
4. You can also see the connection quality on the "Connection" page. Click **OK** to exit the utility.
5. Click **Apply** to save your settings and check the "Status" page to see the "Association State". It should show "Connected - xx:xx:xx:xx:xx:xx".

IC

This device complies with RSS-210.

Operation is subject to the following two conditions:

- (1) This device may not cause harmful interference.
- (2) This device must accept any interference received, including interference

Federal Communication Commission Interference Statement

This equipment has been tested and found to comply with the limits for a Class B digital device, pursuant to Part 15 of the FCC Rules. These limits are designed to provide reasonable protection against harmful interference in a residential installation.

This equipment generates, uses and can radiate radio frequency energy and, if not installed and used in accordance with the instructions, may cause harmful interference to radio communications. However, there is no guarantee that interference will not occur in a particular installation. If this equipment does cause harmful interference to radio or television reception, which can be determined by turning the equipment off and on, the user is encouraged to try to correct the interference by one of the following measures:

- . Reorient or relocate the receiving antenna.
- . Increase the separation between the equipment and receiver.
- . Connect the equipment into an outlet on a circuit different from that to which the receiver is connected.
- . Consult the dealer or an experienced radio/TV technician for help.

FCC Caution: To assure continued compliance, any changes or modifications not expressly approved by the party responsible for compliance could void the user's authority to operate this equipment. (Example - use only shielded interface cables when connecting to computer or peripheral devices).

FCC Radiation Exposure Statement

This equipment complies with FCC RF radiation exposure limits set forth for an uncontrolled environment. This equipment should be installed and operated with a minimum distance of 20 centimeters between the radiator and your body.

This transmitter must not be co-located or operating in conjunction with any other antenna or transmitter.