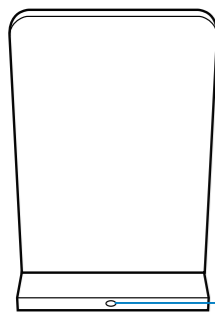


ENGLISH

Getting to know your wireless charging stand

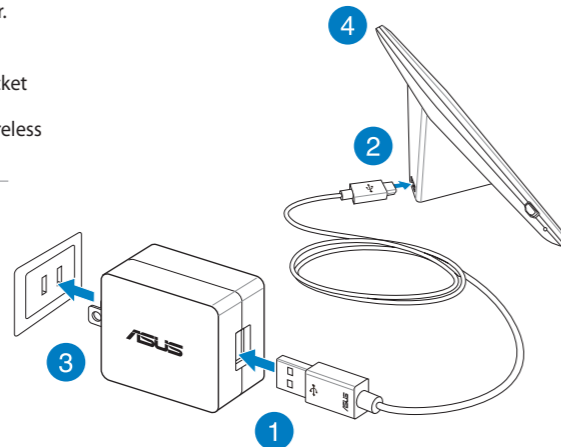


Dimension	75 x 75 x 60 mm (LxWxH)
Weight	200g
Color	Black
Power	Input: DCV 5V, 2A Output: 5V, 1A
I/O port	1 x micro USB port 1 x status LED (white)
Charging standard	Qi wireless standard

- 1 Status LED**
- **Solid LED:** Qi-compatible device is charging.
 - **Blinking LED:** Charging error such as overheating, unrecognized device, or metallic obstruction.
 - **LED off:** Qi-compatible device is not detected.

Using your wireless charging stand

1. Connect the USB cable to the power adapter.
2. Connect the micro USB connector into your wireless charging stand.
3. Plug the power adapter into a grounded socket outlet.
4. Place your Qi-compatible device on your wireless charging stand.



NOTES:

- Ensure that PW100 supports your Qi-compatible device. Visit ASUS Support site at support.asus.com for the PW100 support list.
- For a 7-inch device (or bigger), such as Nexus 7 (2013), place it horizontally on the wireless charging stand.
- Check if your smart device supports the Qi wireless standard.
- For better charging efficiency, remove your device from its cover or sleeve before charging it on your wireless stand.
- **RATING:** 100~240Vac, 50/60Hz



CAUTION! DO NOT throw this product in municipal waste. This product has been designed to enable proper reuse of parts and recycling. This symbol of the crossed out wheeled bin indicates that the product (electrical and electronic equipment) should not be placed in municipal waste. Check local regulations for disposal of electronic products.

ASUS Recycling/Takeback Services

ASUS recycling and takeback programs come from our commitment to the highest standards for protecting our environment. We believe in providing solutions for you to be able to responsibly recycle our products, batteries, other components, as well as the packaging materials. Please go to <http://csr.asus.com/english/Takeback.htm> for the detailed recycling information in different regions.



This is a Class B product, in a domestic environment, this product may cause radio interference, in which case the user may be required to take adequate measures.

CE RF Exposure Compliance

This device meets the EU requirements (1999/519/EC) and the International Commission on Non-Ionizing Radiation Protection (ICNIRP) on the limitation of exposure of the general public to electromagnetic fields by way of health protection.

Declaration of Conformity

- 1. Health (Article 3.1(a) of the R&TTE Directive)**
 - EN 62311: 2008
 - EN 50364: 2010
- 2. Safety (Article 3.1(a) of the R&TTE Directive)**
 - EN 60950-1:2006/A11:2009+A1:2010+A12:2011
- 3. Electromagnetic compatibility (Article 3.1(b) of the R&TTE Directive)**
 - EN 301 489-1 V1.9.2, EN 301 489-3 V1.4.1
 - EN 55022: 2010/AC:2011 Class B
 - EN 55011: 2009/A1:2010
- 4. Radio frequency spectrum usage (Article 3.2 of the R&TTE Directive)**
 - EN 300 330-1 V1.7.1, EN 300 330-2 V1.5.1

S-CHINESE

Getting to know your wireless charging stand

Dimension: 75 x 75 x 60 mm (LxWxH)
Weight: 200g
Color: Black
Power: Input: DCV 5V, 2A; Output: 5V, 1A
I/O port 1 x micro USB port; 1 x status LED (white)
Charging standard Qi wireless standard

- 1. Status LED**
- **Solid LED:** Qi-compatible device is charging.
 - **Blinking LED:** Charging error such as overheating, unrecognized device, or metallic obstruction.
 - **LED off:** Qi-compatible device is not detected.

Using your wireless charging stand

1. Connect the USB cable to the power adapter.
2. Connect the micro USB connector into your wireless charging stand.
3. Plug the power adapter into a grounded socket outlet.
4. Place your Qi-compatible device on your wireless charging stand.

NOTES:

- Ensure that PW100 supports your Qi-compatible device. Visit ASUS Support site at support.asus.com for the PW100 support list.
- For a 7-inch device (or bigger), such as Nexus 7 (2013), place it horizontally on the wireless charging stand.
- Check if your smart device supports the Qi wireless standard.
- For better charging efficiency, remove your device from its cover or sleeve before charging it on your wireless stand.
- **RATING:** 100~240Vac, 50/60Hz

T-CHINESE

Getting to know your wireless charging stand

Dimension: 75 x 75 x 60 mm (LxWxH)
Weight: 200g
Color: Black
Power: Input: DCV 5V, 2A; Output: 5V, 1A
I/O port 1 x micro USB port; 1 x status LED (white)
Charging standard Qi wireless standard

- 1. Status LED**
- **Solid LED:** Qi-compatible device is charging.
 - **Blinking LED:** Charging error such as overheating, unrecognized device, or metallic obstruction.
 - **LED off:** Qi-compatible device is not detected.

Using your wireless charging stand

1. Connect the USB cable to the power adapter.
2. Connect the micro USB connector into your wireless charging stand.
3. Plug the power adapter into a grounded socket outlet.
4. Place your Qi-compatible device on your wireless charging stand.

NOTES:

- Ensure that PW100 supports your Qi-compatible device. Visit ASUS Support site at support.asus.com for the PW100 support list.
- For a 7-inch device (or bigger), such as Nexus 7 (2013), place it horizontally on the wireless charging stand.
- Check if your smart device supports the Qi wireless standard.
- For better charging efficiency, remove your device from its cover or sleeve before charging it on your wireless stand.
- **RATING:** 100~240Vac, 50/60Hz

FRENCH

Getting to know your wireless charging stand

Dimension: 75 x 75 x 60 mm (LxWxH)
Weight: 200g
Color: Black
Power: Input: DCV 5V, 2A; Output: 5V, 1A
I/O port 1 x micro USB port; 1 x status LED (white)
Charging standard Qi wireless standard

- 1. Status LED**
- **Solid LED:** Qi-compatible device is charging.
 - **Blinking LED:** Charging error such as overheating, unrecognized device, or metallic obstruction.
 - **LED off:** Qi-compatible device is not detected.

Using your wireless charging stand

1. Connect the USB cable to the power adapter.
2. Connect the micro USB connector into your wireless charging stand.
3. Plug the power adapter into a grounded socket outlet.
4. Place your Qi-compatible device on your wireless charging stand.

NOTES:

- Ensure that PW100 supports your Qi-compatible device. Visit ASUS Support site at support.asus.com for the PW100 support list.
- For a 7-inch device (or bigger), such as Nexus 7 (2013), place it horizontally on the wireless charging stand.
- Check if your smart device supports the Qi wireless standard.
- For better charging efficiency, remove your device from its cover or sleeve before charging it on your wireless stand.
- **RATING:** 100~240Vac, 50/60Hz

GERMAN

Getting to know your wireless charging stand

Dimension: 75 x 75 x 60 mm (LxWxH)
Weight: 200g
Color: Black
Power: Input: DCV 5V, 2A; Output: 5V, 1A
I/O port 1 x micro USB port; 1 x status LED (white)
Charging standard Qi wireless standard

- 1. Status LED**
- **Solid LED:** Qi-compatible device is charging.
 - **Blinking LED:** Charging error such as overheating, unrecognized device, or metallic obstruction.
 - **LED off:** Qi-compatible device is not detected.

Using your wireless charging stand

1. Connect the USB cable to the power adapter.
2. Connect the micro USB connector into your wireless charging stand.
3. Plug the power adapter into a grounded socket outlet.
4. Place your Qi-compatible device on your wireless charging stand.

NOTES:

- Ensure that PW100 supports your Qi-compatible device. Visit ASUS Support site at support.asus.com for the PW100 support list.
- For a 7-inch device (or bigger), such as Nexus 7 (2013), place it horizontally on the wireless charging stand.
- Check if your smart device supports the Qi wireless standard.
- For better charging efficiency, remove your device from its cover or sleeve before charging it on your wireless stand.
- **RATING:** 100~240Vac, 50/60Hz

ITALIAN

Getting to know your wireless charging stand

Dimension: 75 x 75 x 60 mm (LxWxH)
Weight: 200g
Color: Black
Power: Input: DCV 5V, 2A; Output: 5V, 1A
I/O port 1 x micro USB port; 1 x status LED (white)
Charging standard Qi wireless standard

- 1. Status LED**
- **Solid LED:** Qi-compatible device is charging.
 - **Blinking LED:** Charging error such as overheating, unrecognized device, or metallic obstruction.
 - **LED off:** Qi-compatible device is not detected.

Using your wireless charging stand

1. Connect the USB cable to the power adapter.
2. Connect the micro USB connector into your wireless charging stand.
3. Plug the power adapter into a grounded socket outlet.
4. Place your Qi-compatible device on your wireless charging stand.

NOTES:

- Ensure that PW100 supports your Qi-compatible device. Visit ASUS Support site at support.asus.com for the PW100 support list.
- For a 7-inch device (or bigger), such as Nexus 7 (2013), place it horizontally on the wireless charging stand.
- Check if your smart device supports the Qi wireless standard.
- For better charging efficiency, remove your device from its cover or sleeve before charging it on your wireless stand.
- **RATING:** 100~240Vac, 50/60Hz

JAPANESE

Getting to know your wireless charging stand

Dimension: 75 x 75 x 60 mm (LxWxH)
Weight: 200g
Color: Black
Power: Input: DCV 5V, 2A; Output: 5V, 1A
I/O port 1 x micro USB port; 1 x status LED (white)
Charging standard Qi wireless standard

- 1. Status LED**
- **Solid LED:** Qi-compatible device is charging.
 - **Blinking LED:** Charging error such as overheating, unrecognized device, or metallic obstruction.
 - **LED off:** Qi-compatible device is not detected.

Using your wireless charging stand

1. Connect the USB cable to the power adapter.
2. Connect the micro USB connector into your wireless charging stand.
3. Plug the power adapter into a grounded socket outlet.
4. Place your Qi-compatible device on your wireless charging stand.

NOTES:

- Ensure that PW100 supports your Qi-compatible device. Visit ASUS Support site at support.asus.com for the PW100 support list.
- For a 7-inch device (or bigger), such as Nexus 7 (2013), place it horizontally on the wireless charging stand.
- Check if your smart device supports the Qi wireless standard.
- For better charging efficiency, remove your device from its cover or sleeve before charging it on your wireless stand.
- **RATING:** 100~240Vac, 50/60Hz

RUSSIAN

Getting to know your wireless charging stand

Dimension: 75 x 75 x 60 mm (LxWxH)
Weight: 200g
Color: Black
Power: Input: DCV 5V, 2A; Output: 5V, 1A
I/O port 1 x micro USB port; 1 x status LED (white)
Charging standard Qi wireless standard

- 1. Status LED**
- **Solid LED:** Qi-compatible device is charging.
 - **Blinking LED:** Charging error such as overheating, unrecognized device, or metallic obstruction.
 - **LED off:** Qi-compatible device is not detected.

Using your wireless charging stand

1. Connect the USB cable to the power adapter.
2. Connect the micro USB connector into your wireless charging stand.
3. Plug the power adapter into a grounded socket outlet.
4. Place your Qi-compatible device on your wireless charging stand.

NOTES:

- Ensure that PW100 supports your Qi-compatible device. Visit ASUS Support site at support.asus.com for the PW100 support list.
- For a 7-inch device (or bigger), such as Nexus 7 (2013), place it horizontally on the wireless charging stand.
- Check if your smart device supports the Qi wireless standard.
- For better charging efficiency, remove your device from its cover or sleeve before charging it on your wireless stand.
- **RATING:** 100~240Vac, 50/60Hz

CZECH

Getting to know your wireless charging stand

Dimension: 75 x 75 x 60 mm (LxWxH)
Weight: 200g
Color: Black
Power: Input: DCV 5V, 2A; Output: 5V, 1A
I/O port 1 x micro USB port; 1 x status LED (white)
Charging standard Qi wireless standard

- 1. Status LED**
- **Solid LED:** Qi-compatible device is charging.
 - **Blinking LED:** Charging error such as overheating, unrecognized device, or metallic obstruction.
 - **LED off:** Qi-compatible device is not detected.

Using your wireless charging stand

1. Connect the USB cable to the power adapter.
2. Connect the micro USB connector into your wireless charging stand.
3. Plug the power adapter into a grounded socket outlet.
4. Place your Qi-compatible device on your wireless charging stand.

NOTES:

- Ensure that PW100 supports your Qi-compatible device. Visit ASUS Support site at support.asus.com for the PW100 support list.
- For a 7-inch device (or bigger), such as Nexus 7 (2013), place it horizontally on the wireless charging stand.
- Check if your smart device supports the Qi wireless standard.
- For better charging efficiency, remove your device from its cover or sleeve before charging it on your wireless stand.
- **RATING:** 100~240Vac, 50/60Hz

HUNGARIAN

Getting to know your wireless charging stand

Dimension: 75 x 75 x 60 mm (LxWxH)
Weight: 200g
Color: Black
Power: Input: DCV 5V, 2A; Output: 5V, 1A
I/O port 1 x micro USB port; 1 x status LED (white)
Charging standard Qi wireless standard

1. Status LED

- **Solid LED:** Qi-compatible device is charging.
- **Blinking LED:** Charging error such as overheating, unrecognized device, or metallic obstruction.
- **LED off:** Qi-compatible device is not detected.

Using your wireless charging stand

1. Connect the USB cable to the power adapter.
2. Connect the micro USB connector into your wireless charging stand.
3. Plug the power adapter into a grounded socket outlet.
4. Place your Qi-compatible device on your wireless charging stand.

NOTES:

- Ensure that PW100 supports your Qi-compatible device. Visit ASUS Support site at support.asus.com for the PW100 support list.
- For a 7-inch device (or bigger), such as Nexus 7 (2013), place it horizontally on the wireless charging stand.
- Check if your smart device supports the Qi wireless standard.
- For better charging efficiency, remove your device from its cover or sleeve before charging it on your wireless stand.
- **RATING:** 100~240Vac, 50/60Hz

POLISH

Getting to know your wireless charging stand

Dimension: 75 x 75 x 60 mm (LxWxH)
Weight: 200g
Color: Black
Power: Input: DCV 5V, 2A; Output: 5V, 1A
I/O port 1 x micro USB port; 1 x status LED (white)
Charging standard Qi wireless standard

1. Status LED

- **Solid LED:** Qi-compatible device is charging.
- **Blinking LED:** Charging error such as overheating, unrecognized device, or metallic obstruction.
- **LED off:** Qi-compatible device is not detected.

Using your wireless charging stand

1. Connect the USB cable to the power adapter.
2. Connect the micro USB connector into your wireless charging stand.
3. Plug the power adapter into a grounded socket outlet.
4. Place your Qi-compatible device on your wireless charging stand.

NOTES:

- Ensure that PW100 supports your Qi-compatible device. Visit ASUS Support site at support.asus.com for the PW100 support list.
- For a 7-inch device (or bigger), such as Nexus 7 (2013), place it horizontally on the wireless charging stand.
- Check if your smart device supports the Qi wireless standard.
- For better charging efficiency, remove your device from its cover or sleeve before charging it on your wireless stand.
- **RATING:** 100~240Vac, 50/60Hz

PORTUGUESE

Getting to know your wireless charging stand

Dimension: 75 x 75 x 60 mm (LxWxH)
Weight: 200g
Color: Black
Power: Input: DCV 5V, 2A; Output: 5V, 1A
I/O port 1 x micro USB port; 1 x status LED (white)
Charging standard Qi wireless standard

1. Status LED

- **Solid LED:** Qi-compatible device is charging.
- **Blinking LED:** Charging error such as overheating, unrecognized device, or metallic obstruction.
- **LED off:** Qi-compatible device is not detected.

Using your wireless charging stand

1. Connect the USB cable to the power adapter.
2. Connect the micro USB connector into your wireless charging stand.
3. Plug the power adapter into a grounded socket outlet.
4. Place your Qi-compatible device on your wireless charging stand.

NOTES:

- Ensure that PW100 supports your Qi-compatible device. Visit ASUS Support site at support.asus.com for the PW100 support list.
- For a 7-inch device (or bigger), such as Nexus 7 (2013), place it horizontally on the wireless charging stand.
- Check if your smart device supports the Qi wireless standard.
- For better charging efficiency, remove your device from its cover or sleeve before charging it on your wireless stand.
- **RATING:** 100~240Vac, 50/60Hz

ROMANIAN

Getting to know your wireless charging stand

Dimension: 75 x 75 x 60 mm (LxWxH)
Weight: 200g
Color: Black
Power: Input: DCV 5V, 2A; Output: 5V, 1A
I/O port 1 x micro USB port; 1 x status LED (white)
Charging standard Qi wireless standard

1. Status LED

- **Solid LED:** Qi-compatible device is charging.
- **Blinking LED:** Charging error such as overheating, unrecognized device, or metallic obstruction.
- **LED off:** Qi-compatible device is not detected.

Using your wireless charging stand

1. Connect the USB cable to the power adapter.
2. Connect the micro USB connector into your wireless charging stand.
3. Plug the power adapter into a grounded socket outlet.
4. Place your Qi-compatible device on your wireless charging stand.

NOTES:

- Ensure that PW100 supports your Qi-compatible device. Visit ASUS Support site at support.asus.com for the PW100 support list.
- For a 7-inch device (or bigger), such as Nexus 7 (2013), place it horizontally on the wireless charging stand.
- Check if your smart device supports the Qi wireless standard.
- For better charging efficiency, remove your device from its cover or sleeve before charging it on your wireless stand.
- **RATING:** 100~240Vac, 50/60Hz

SLOVAKIAN

Getting to know your wireless charging stand

Dimension: 75 x 75 x 60 mm (LxWxH)
Weight: 200g
Color: Black
Power: Input: DCV 5V, 2A; Output: 5V, 1A
I/O port 1 x micro USB port; 1 x status LED (white)
Charging standard Qi wireless standard

1. Status LED

- **Solid LED:** Qi-compatible device is charging.
- **Blinking LED:** Charging error such as overheating, unrecognized device, or metallic obstruction.
- **LED off:** Qi-compatible device is not detected.

Using your wireless charging stand

1. Connect the USB cable to the power adapter.
2. Connect the micro USB connector into your wireless charging stand.
3. Plug the power adapter into a grounded socket outlet.
4. Place your Qi-compatible device on your wireless charging stand.

NOTES:

- Ensure that PW100 supports your Qi-compatible device. Visit ASUS Support site at support.asus.com for the PW100 support list.
- For a 7-inch device (or bigger), such as Nexus 7 (2013), place it horizontally on the wireless charging stand.
- Check if your smart device supports the Qi wireless standard.
- For better charging efficiency, remove your device from its cover or sleeve before charging it on your wireless stand.
- **RATING:** 100~240Vac, 50/60Hz

SLOVENIAN

Getting to know your wireless charging stand

Dimension: 75 x 75 x 60 mm (LxWxH)
Weight: 200g
Color: Black
Power: Input: DCV 5V, 2A; Output: 5V, 1A
I/O port 1 x micro USB port; 1 x status LED (white)
Charging standard Qi wireless standard

1. Status LED

- **Solid LED:** Qi-compatible device is charging.
- **Blinking LED:** Charging error such as overheating, unrecognized device, or metallic obstruction.
- **LED off:** Qi-compatible device is not detected.

Using your wireless charging stand

1. Connect the USB cable to the power adapter.
2. Connect the micro USB connector into your wireless charging stand.
3. Plug the power adapter into a grounded socket outlet.
4. Place your Qi-compatible device on your wireless charging stand.

NOTES:

- Ensure that PW100 supports your Qi-compatible device. Visit ASUS Support site at support.asus.com for the PW100 support list.
- For a 7-inch device (or bigger), such as Nexus 7 (2013), place it horizontally on the wireless charging stand.
- Check if your smart device supports the Qi wireless standard.
- For better charging efficiency, remove your device from its cover or sleeve before charging it on your wireless stand.
- **RATING:** 100~240Vac, 50/60Hz

SPANISH

Getting to know your wireless charging stand

Dimension: 75 x 75 x 60 mm (LxWxH)
Weight: 200g
Color: Black
Power: Input: DCV 5V, 2A; Output: 5V, 1A
I/O port 1 x micro USB port; 1 x status LED (white)
Charging standard Qi wireless standard

1. Status LED

- **Solid LED:** Qi-compatible device is charging.
- **Blinking LED:** Charging error such as overheating, unrecognized device, or metallic obstruction.
- **LED off:** Qi-compatible device is not detected.

Using your wireless charging stand

1. Connect the USB cable to the power adapter.
2. Connect the micro USB connector into your wireless charging stand.
3. Plug the power adapter into a grounded socket outlet.
4. Place your Qi-compatible device on your wireless charging stand.

NOTES:

- Ensure that PW100 supports your Qi-compatible device. Visit ASUS Support site at support.asus.com for the PW100 support list.
- For a 7-inch device (or bigger), such as Nexus 7 (2013), place it horizontally on the wireless charging stand.
- Check if your smart device supports the Qi wireless standard.
- For better charging efficiency, remove your device from its cover or sleeve before charging it on your wireless stand.
- **RATING:** 100~240Vac, 50/60Hz

TURKISH

Getting to know your wireless charging stand

Dimension: 75 x 75 x 60 mm (LxWxH)
Weight: 200g
Color: Black
Power: Input: DCV 5V, 2A; Output: 5V, 1A
I/O port 1 x micro USB port; 1 x status LED (white)
Charging standard Qi wireless standard

1. Status LED

- **Solid LED:** Qi-compatible device is charging.
- **Blinking LED:** Charging error such as overheating, unrecognized device, or metallic obstruction.
- **LED off:** Qi-compatible device is not detected.

Using your wireless charging stand

1. Connect the USB cable to the power adapter.
2. Connect the micro USB connector into your wireless charging stand.
3. Plug the power adapter into a grounded socket outlet.
4. Place your Qi-compatible device on your wireless charging stand.

NOTES:

- Ensure that PW100 supports your Qi-compatible device. Visit ASUS Support site at support.asus.com for the PW100 support list.
- For a 7-inch device (or bigger), such as Nexus 7 (2013), place it horizontally on the wireless charging stand.
- Check if your smart device supports the Qi wireless standard.
- For better charging efficiency, remove your device from its cover or sleeve before charging it on your wireless stand.
- **RATING:** 100~240Vac, 50/60Hz

UKRAINIAN

Getting to know your wireless charging stand

Dimension: 75 x 75 x 60 mm (LxWxH)
Weight: 200g
Color: Black
Power: Input: DCV 5V, 2A; Output: 5V, 1A
I/O port 1 x micro USB port; 1 x status LED (white)
Charging standard Qi wireless standard

1. Status LED

- **Solid LED:** Qi-compatible device is charging.
- **Blinking LED:** Charging error such as overheating, unrecognized device, or metallic obstruction.
- **LED off:** Qi-compatible device is not detected.

Using your wireless charging stand

1. Connect the USB cable to the power adapter.
2. Connect the micro USB connector into your wireless charging stand.
3. Plug the power adapter into a grounded socket outlet.
4. Place your Qi-compatible device on your wireless charging stand.

NOTES:

- Ensure that PW100 supports your Qi-compatible device. Visit ASUS Support site at support.asus.com for the PW100 support list.
- For a 7-inch device (or bigger), such as Nexus 7 (2013), place it horizontally on the wireless charging stand.
- Check if your smart device supports the Qi wireless standard.
- For better charging efficiency, remove your device from its cover or sleeve before charging it on your wireless stand.
- **RATING:** 100~240Vac, 50/60Hz

Federal Communications Commission Interference Statement

This equipment has been tested and found to comply with the limits for a Class B digital device, pursuant to Part 15 of the FCC Rules. These limits are designed to provide reasonable protection against harmful interference in a residential installation.

This equipment generates, uses and can radiate radio frequency energy and, if not installed and used in accordance with the instructions, may cause harmful interference to radio communications.

However, there is no guarantee that interference will not occur in a particular installation.

If this equipment does not cause harmful interference to radio or television reception, which can be determined by turning the equipment off and on, the user is encouraged to try to correct the interference by one or more of the following measures:

- Reorient or relocate the receiving antenna.
- Increase the separation between the equipment and receiver.
- Connect the equipment into an outlet on a circuit different from that to which the receiver is connected.
- Consult the dealer or an experienced radio/TV technician for help.

This device complies with part 15 of the FCC Rules. Operation is subject to the following conditions:

- (1) This device may not cause harmful interference and
- (2) This device must accept any interference received, including interference that may cause undesired operation.

CAUTION: Any changes or modifications not expressly approved by the grantee of this device could void the user's authority to operate.

FCC ID: MSQPW100

FCC RF Exposure Information

This equipment complies with radio frequency (RF) exposure limits adopted by the Federal Communications Commission for an uncontrolled environment. This equipment should be installed and operated with minimum distance 10 cm between the radiator & your body.

IC Regulations: RSS-Gen 7.1.3

This device complies with Industry Canada license-exempt RSS standard(s).

Operation is subject to the following two conditions:

- (1) this device may not cause interference, and
- (2) this device must accept any interference, including interference that may cause undesired operation of the device.

Le présent appareil est conforme aux CNR d'Industrie Canada applicables aux appareils radio exempts de licence. L'exploitation est autorisée aux deux conditions suivantes:

- (1) l'appareil ne doit pas produire de brouillage, et
- (2) l'utilisateur de l'appareil doit accepter tout brouillage radioélectrique subi, même si le brouillage est susceptible d'en compromettre le fonctionnement."

ICES-003 Issue 5

CAN ICES-3(B)/NMB-3(B)

IC RF Exposure Info

This equipment complies with IC RSS-102 RF exposure limits set forth for an uncontrolled environment. This equipment should be installed and operated with minimum distance 10 cm between the radiator & your body.

MANUFACTURER
ASUSTeK Computer Inc.
 Tel: +886-2-2894-3447
 Address: 4F, No. 150, LI-TE RD., PEITOU, TAIPEI 112, TAIWAN

AUTHORISED REPRESENTATIVE IN EUROPE
ASUS Computer GmbH
 Address: HARKORT STR. 21-23, 40880 RATINGEN, GERMANY

AUTHORISED DISTRIBUTORS IN TURKEY
Penta Teknoloji Urunleri Dagitim Ticaret A.S.
 Tel: 0216 645 8200
 Address: Dudullu Organize Sanayi Bolgesi Nato Yolu 4. CAD No.1 Dudullu Umraniye 34775 Istanbul, Turkey

EEE Yönetmeliğine Uygundur.



N13219