

Smart TV Set Top Box Dongle

Model No.: QUBE WITH GOOGLE TV Dongle

Table of contents

TABLE OF CONTENTS	2
1 PRODUCT DESCRIPTION	3
1.1 INTRODUCTION	3
1.2 FEATURE DESCRIPTION	3
1.2.1 Receiver	3
1.2.2 Anti-Interference 2.4Ghz Radio Frequency	3
2 PHYSICAL SPECIFICATION	3
2.1 DIMENSION	3
2.2 ENCLOSURE	4
3 ELECTRICAL SPECIFICATIONS	4
3.1 SYSTEM INTERFACE	4
3.2 COMPATIBILITY	4
3.3 POWER RATING.....	4
3.4 OPERATING LOW TEMPERATURE TEST.....	4
3.5 OPERATING HIGH TEMPERATURE AND HIGH HUMIDITY TEST	4
4 COMPATIBILITY	4
5 GREEN REQUIREMENT	4
6 REGULATORY COMPLIANCE	5

1 Product Description

1.1 Introduction

- This document contains a functional and performance specification of 2.4G Kits.

1.2 Feature Description

1.2.1 Receiver

- Wireless Technology Nordic RF two-way 2.4GHz
- Wireless Operating Range 7 meter (in without interference environment)
- Flex cable connect to Smart TV Set Top Box system
- Full Speed USB 2.0
- Pairing process:
 - Put RF Keyboard or RF touch pad to close Receiver within 10 cm.
 - Press and hold the RF keyboard or RF touch pad pair button for one second into the pairing process.
 - The Receiver will keep scanning the pairing request from RF keyboard or RF touch pad automatically. The pairing process will complete and succeed in 5 seconds.
 - Typing keyboard or dragging touch pad to get relative response on PC.
 - If pairing process does not succeed, should reduce the distance between RF Keyboard or RF touch pad that more close to Receiver and repeat pair process again.
 - Paired restriction: Receiver only can pair with one keyboard and one touch pad. Second keyboard or touch pad is not allowed to pair at the same time.

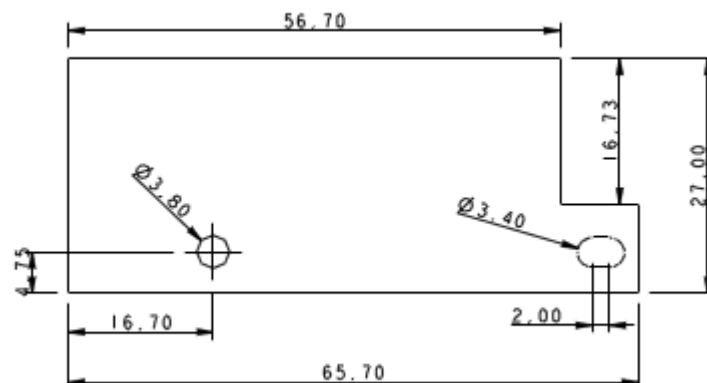
1.2.2 Anti-Interference 2.4Ghz Radio Frequency

- The 64 channel/ 65535 device IDs architecture along with auto channel switch capability will be also required to guarantee the hassle-free 2.4GHz wireless connection.

2 Physical Specification

2.1 Dimension

- Length 65.7.0±0.5mm
- Width 27±0.5mm
- Height 3.0±0.5mm



2.2 Enclosure

- Metal & PCB

3 Electrical Specifications

3.1 System Interface

- Smart TV Set Top Box system USB Port only

3.2 Compatibility

- USB Specification Revision 1.1 or greater (Support remote wake up)

3.3 Power Rating

- USB power consumption < 75 mA.

3.4 Operating low temperature test

- Temperature: 0°C
- Time: 24 hrs

3.5 Operating high temperature and high humidity test

- Temperature: 40°C
- Humidity: 90%
- Time: 24hrs

4 Compatibility

- Microsoft © Windows 7 (32bit & 64bit)
- WHQL
- USB IF

5 Green Requirement

Environment		
	WEEE, RoHS	Third party lab inspection for certifying EC Directive on Waste Electrical and Electronic Equipment (WEEE) and Restricting the use of Hazardous Substances (RoHS), including RoHS 2 Exemption Use Restrictions, referred to in the GSE below.

6 Regulatory Compliance

Federal Communication Commission Interference Statement

This device complies with Part 15 of the FCC Rules. Operation is subject to the following two conditions: (1) This device may not cause harmful interference, and (2) this device must accept any interference received, including interference that may cause undesired operation.

This equipment has been tested and found to comply with the limits for a Class B digital device, pursuant to Part 15 of the FCC Rules. These limits are designed to provide reasonable protection against harmful interference in a residential installation. This equipment generates, uses and can radiate radio frequency energy and, if not installed and used in accordance with the instructions, may cause harmful interference to radio communications. However, there is no guarantee that interference will not occur in a particular installation. If this equipment does cause harmful interference to radio or television reception, which can be determined by turning the equipment off and on, the user is encouraged to try to correct the interference by one of the following measures:

- Reorient or relocate the receiving antenna.
- Increase the separation between the equipment and receiver.
- Connect the equipment into an outlet on a circuit different from that to which the receiver is connected.
- Consult the dealer or an experienced radio/TV technician for help.

FCC Caution: Any changes or modifications not expressly approved by the party responsible for compliance could void the user's authority to operate this equipment.

This transmitter must not be co-located or operating in conjunction with any other antenna or transmitter.

Radiation Exposure Statement:

This equipment complies with FCC radiation exposure limits set forth for an uncontrolled environment. This equipment should be installed and operated with minimum distance 20cm between the radiator & your body.

This device is intended only for OEM integrators under the following conditions:

The antenna must be installed such that 20 cm is maintained between the antenna and users, and
The transmitter module may not be co-located with any other transmitter or antenna.

As long as 2 conditions above are met, further transmitter test will not be required. However, the OEM integrator is still responsible for testing their end-product for any additional compliance requirements required with this module installed

IMPORTANT NOTE: In the event that these conditions can not be met (for example certain laptop configurations or co-location with another transmitter), then the FCC authorization is no longer considered valid and the FCC ID can not be used on the final product. In these circumstances, the OEM integrator will be responsible for re-evaluating the end product (including the transmitter) and obtaining a separate FCC authorization.

End Product Labeling

This transmitter module is authorized only for use in device where the antenna may be installed such that 20 cm may be maintained between the antenna and users. The final end product must be labeled in a visible area with the following: "Contains FCC ID: **MSQ-QUBE010112**". The grantee's FCC ID can be used only when all FCC compliance requirements are met.

Manual Information To the End User

The OEM integrator has to be aware not to provide information to the end user regarding how to install or remove this RF module in the user's manual of the end product which integrates this module.
The end user manual shall include all required regulatory information/warning as show in this manual.