

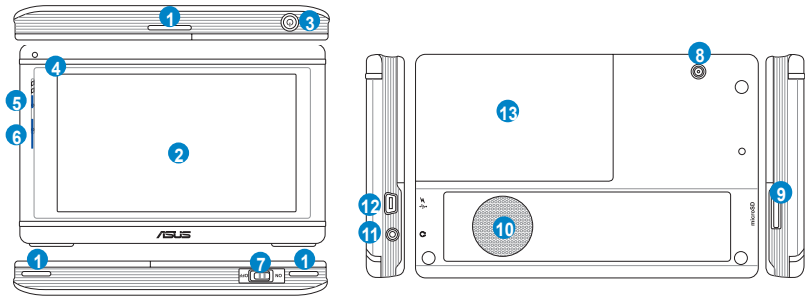
# R700

E3453



## Quick Start Guide

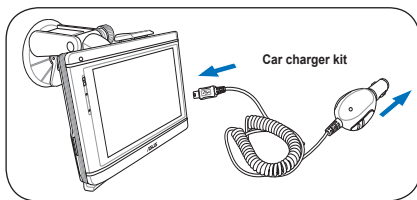
# Layout Features



|    |                       |  |
|----|-----------------------|--|
| 1  | Car kit groove        | Allows you to secure the device while driving  |
| 2  | Display               | Displays information and allows you to manipulate items and execute menus by tapping the screen. |
| 3  | Sleep Mode Button     | Press to turn on the device, or to enter into sleep mode   |
| 4  | Light Sensor          | Automatically adjusts the backlight according to the light in the environment                    |
| 5  | Charging LED          | Red- charging, Green- full charged   |
| 6  | Microphone            | Microphone for handsfree function  |
| 7  | Main Power switch     | Turns the main power on/off  |
| 8  | External Antenna port | Connects to an external antenna for better signal performance (the external antenna is optional) |
| 9  | Micro SD Slot         | Insert the external Micro SD memory card to this slot  |
| 10 | Speaker               | Allows you to listen to music, the navigation voice, and system warning                          |
| 11 | Audio Jack            | Allows you to connect headsets or two-channel speakers   |
| 12 | Mini USB              | Allows you to charge the device or connect to a PC via a USB cable                               |
| 13 | Battery               | Battery cover  |

# Charging the Battery


You can charge the device from a car charger kit. Plug the cable to the mini-USB port on the right side of the device.



## NOTE:

- Charge the battery before using the device.
- While charging, the power LED lights up in red. When the battery is fully charged, the power LED turns to green.
- Charging may take several hours.
- You can use the device while charging. However, the device takes much less time to be fully charged in sleep mode.

To check how much battery power remains:

1. From the main menu, tap **Settings** (Figure 1).
2. The **Sub-menu Settings** appears. Tap  to display more options (Figure 2).
3. Tap the battery icon (Figure 3).

The battery screen appears and displays a battery showing the battery power that remains (Figure 4).



Figure 1



Figure 2



Figure 3



Figure 4

# Install the Car Kit and Turn on the Device

To turn on the device, set the main power switch (at the bottom of the device) to ON. To enter into/wake up from sleep mode, press the Sleep Mode Button (  ) on the top of the device.

**NOTE:**

- If you press the Sleep Mode button when the device is on, it enters into sleep mode..
- When the device is on, it takes longer time for the battery to be fully charged. When the device is in sleep mode, the battery can be fully charged quickly.

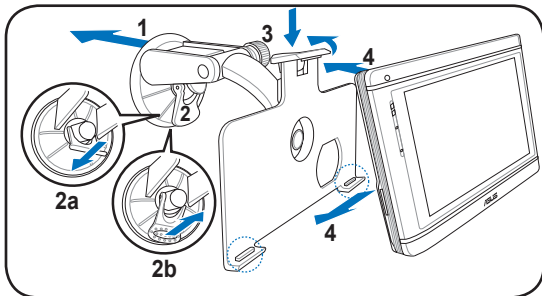
**Sleep Mode Button**



**Main power switch**

To install the car kit:

1. Attached the cupula (1) to the windshield inside your car.
2. Press the lever (2a) to secure the cupula on the windshield surface.
3. Adjust the angle of the gooseneck, then secure it by fastening screwcap (3).
4. Carefully place and slide the device into the cradle (4).



**NOTE:**

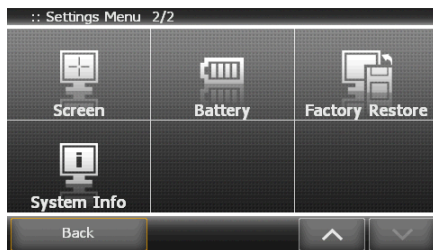
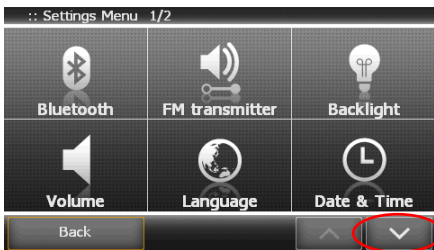
Rise the lever (2b) to release the cupula from the windshield.

# Main Menu and Basic Settings



The **Main Menu** appears after you turn on the device. From the **Main Menu**, you can:

- Tap **Navigation** to enter the navigation system.
- Tap **Video Player** to play videos.
- Tap **Music Player** to play music.
- Tap **Photo Viewer** to view photos.
- Tap **Phone** to set and use bluetooth and phone features.
- Tap **Settings** to adjust the device settings (see figures on the next page).



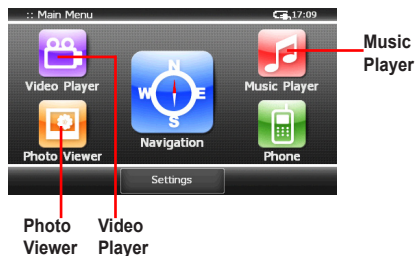
The **Settings Menu** appears when you tap **Settings** from the **Main Menu**. Tap  to display more options.

- The **System Info** button allows you to view the system information.
- The **Language** button allows you to choose the language for the text.
- The **Backlight** button allows you to adjust the LCD brightness. It provides two adjustment modes, **Fix backlight brightness** and **Adjust by environment brightness**. R700 has Light Sensor function that allows you to adjust LCD brightness for either a lighter or a darker environment.
- The **Date & Time** button allows you to set the date and time for your device.
- The **Bluetooth** button allows you to connect R700 to a cellphone.
- The **Volume** button allows you to adjust/mute the sound for the device and phone calls.
- The **Screen** button allows you to calibrate the LCD screen.
- The **Battery** button allows you to view battery status, see page 3 for detailed information.
- The **FM transmitter** allows you to transmit navigation voice instruction and music/video sounds to your car audio system through the FM radio.

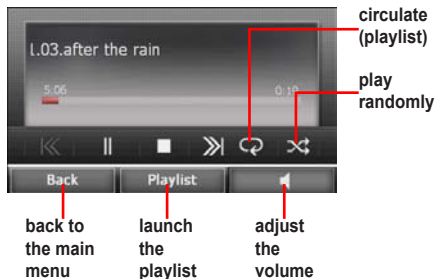
# Multi-Media Features

R700 allows you to play music (mp3 and wma files), view photos (jpg. and bmp. files) and videos (wmv. files). Tap the respective icons from the main menu to launch the applications.

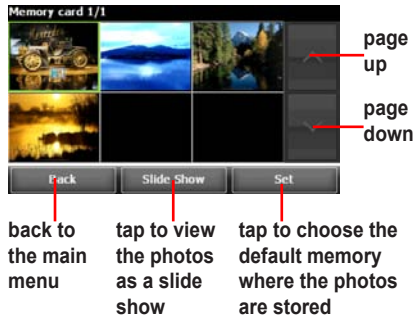
## Main Menu



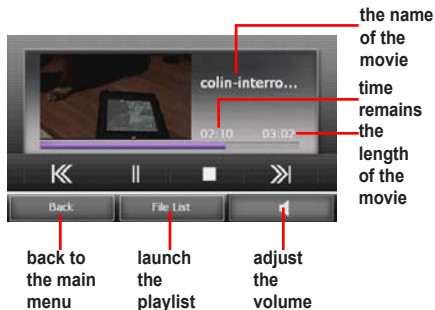
## Playing music



## Viewing photos

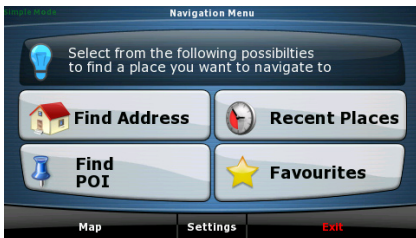


## Playing movies



# Using Navigation

## The Navigation Menu



When ASUS GO is started, the Navigation Menu appears. From here you can reach all parts of ASUS GO.

- Tap **Find Address** to specify an address as your destination.
- Tap **Recent Places** for a list of recent destinations.
- Tap **Find POI** to select one of the stored Points of Interest.
- Tap **My Favourites** for one of your favourite destinations.

The following actions are also possible in the Navigation Menu:

- Tap **Map** to browse the map
- Tap **Settings** to customise the way ASUS GO works.
- Tap **Exit** to stop navigation, and exit ASUS GO.

## Operating modes

ASUS GO can operate in two different modes:

- **Normal Mode** - designed for easy operation when performing frequent tasks



- **Expert Mode** - designed for performing complex tasks and for advanced settings This Quick Start Guide covers actions in **Normal Mode**. See the online User Manual for detailed instructions in both modes.



To switch to Expert Mode, tap **Settings**, then tap **Expert mode**. You can switch back from **Expert Mode** to **Normal Mode** in a similar way.

## Find an address



1. In the **Navigation Menu** tap **Find Address**.
2. Select the destination country. Tap the first line on the list that shows the country you are currently in (or searched for recently). On the next screen, select the country from the list. In some countries, you are also asked to select the state.

3. Select the destination city. Tap the second line on the list that shows the city you are currently in (or searched for recently). Use the virtual keyboard to type the name of the city. Once the matching city names fit on one page, the list of results will be displayed automatically. When typing, tap **Done** any time to display a full list of matching cities immediately.
  - Alternatively, tap the icon next to the city name to select a city from your search history.
4. Enter the street name. Tap the line that says **<Enter Street Name>** and type the name of the destination street. Follow the same method as for selecting the city.



5. Enter the house number. Tap the line that says **<House Number>** and type the house number. You can also:
  - Tap **City Center** after selecting the city if you do not have a specific address on your mind,
  - Tap **Street Center** after selecting the street if you are just looking for a street and not a specific address, or
  - Tap **Intersection** to find the corner of two streets.

Your destination will be shown on the map, and the Cursor menu will appear with the following choices:

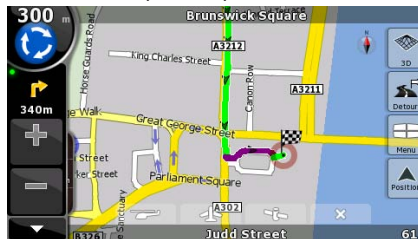
- Tap **Navigate To** to select the address as your destination and start navigating there.
- Tap **Add to Favorites** to save the address as one of your favourite destinations.

- Tap **Map** to browse the map without planning a route.
- Tap **Info** to display the address with its geographical coordinates and nearby POIs.

## Find a POI

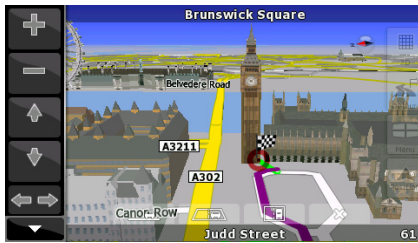
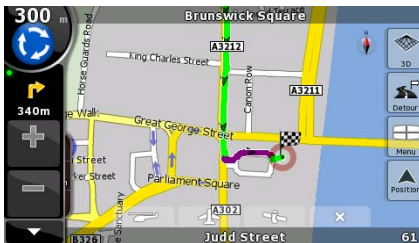


1. To select a Point of Interest, tap **Find POI** in the **Navigation Menu**. This will take you to the **POI Search Center**.
2. Tap **Around GPS**, **Around Cursor**, **Around Destination** or **Along Route** to define the reference point around which you want to search for POIs.
3. Enter the list of POIs in one of the following ways:
  - Tap one of the **POI groups** to open a list of its subgroups, then tap the needed subgroup to enter the list of POIs. Use the **left and right arrow** buttons to see additional POI groups.
  - For a complete list of **POIs near** the selected reference point, tap **All**.



4. A list of POIs is displayed, sorted by their distance from the reference point.
  - Tap **Search** to narrow the list by entering a part of the POI name.
  - To see the name and address of additional POIs, tap the **left and right arrow** buttons.
  - Tap **By Name** to list POIs in alphabetical order instead of their distance.
5. Tap the name of the POI you were looking for. The location of the selected POI will be displayed on the map.
  - Tap **Navigate** to select the POI as your destination and start navigating there.
  - Tap **Add to Favorites** to save the POI as one of your favourite destinations.
  - Tap **Info** to display detailed information on the POI.

## Map and Navigation



ASUS GO can display two types of maps: **2D** map that looks like a conventional road map and works best for browsing **3D** view that shows streets as well as buildings or landmarks (where available), and works best for navigation

- Tap the **2D** or **3D** icon to change between the views.
- To return to the **Navigation Menu**, tap the **Menu** icon.
- Tap the **Cursor** icon to open the **Cursor menu** and navigate to the current position of the cursor.

- Zoom in and out by tapping the corresponding buttons. In 3D view, you can also tilt and rotate the view with the arrow buttons.

In 2D map mode, you can also modify the planned route by tapping **Detour**. If you want to avoid a certain route, you can set it here.



While navigating, a thick line shows the recommended route, and an arrow represents your current position.

A pictogram indicating the next manoeuvre is displayed on the left side along with its distance.

The left panel also shows information about your route, including the planned arrival date, the distance to your destination, and the speed at which you are driving.

Full voice guidance is provided to enable safe navigation without having to look at the screen while driving.

# Setting Bluetooth and Using the Phone

The **Phone** function allows the hands-free communication through a bluetooth connection to your phone. Click the **Phone** button from the main menu to launch the Phone program.

## Main menu



## Phone menu



To connect R700 to your cellphone:

1. Tap **Dialer** from the **Phone Menu** (Figure 1).
2. Tap **Yes** from the **Connect to a Bluetooth handset first** screen.

The **Bluetooth Device Found** screen displays the devices (Figure 2).

4. Tap a device name.

A screen appears asking you to input the PIN number to your cellphone (Figure 3).

5. Input the PIN number to your cellphone.



Figure 1



Figure 2

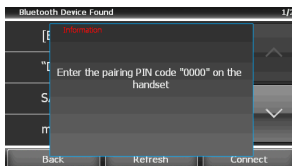


Figure 3

6. Tap the paired device name and tap **Connect**.

A screen appears showing the devices are connected after the bluetooth connection is setup successfully

To make and receive calls:

1. Tap **Dialer** from the **Phone Menu**. The phone pad appears (Figure 1).
2. Dial the number and tap the green phone icon to call.
3. After talk, tap the red phone icon to end a call (Figure 2).

To receive a call, tap the green phone icon (Figure 3).

Figure 1

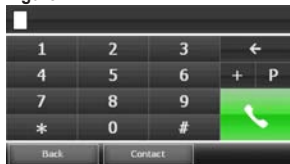


Figure 2

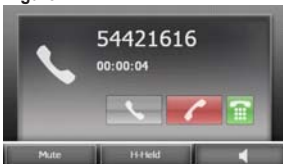
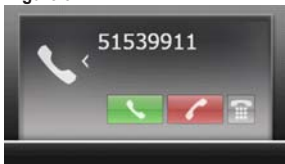


Figure 3



**NOTE:**

Before using the bluetooth and phone features of R700, make sure your cellphone has Bluetooth functions.

**NOTE:**

Some cellphones do not support the SMS and Contact functions of R700.

**NOTE:**

For more information, please see the full User Manual which is included in the support CD of your R700.

**NOTE:**

The screens and procedures in this guide may not be exactly the same with the product in your hand, please take them as reference only.

# **Federal Communication Commission Interference Statement**

This equipment has been tested and found to comply with the limits for a Class B digital device, pursuant to Part 15 of the FCC Rules. These limits are designed to provide reasonable protection against harmful interference in a residential installation. This equipment generates, uses and can radiate radio frequency energy and, if not installed and used in accordance with the instructions, may cause harmful interference to radio communications. However, there is no guarantee that interference will not occur in a particular installation. If this equipment does cause harmful interference to radio or television reception, which can be determined by turning the equipment off and on, the user is encouraged to try to correct the interference by one of the following measures:

- Reorient or relocate the receiving antenna.
- Increase the separation between the equipment and receiver.
- Connect the equipment into an outlet on a circuit different from that to which the receiver is connected.
- Consult the dealer or an experienced radio/TV technician for help.

FCC Caution: Any changes or modifications not expressly approved by the party responsible for compliance could void the user's authority to operate this equipment.

This device complies with Part 15 of the FCC Rules. Operation is subject to the following two conditions: (1) This device may not cause harmful interference, and (2) this device must accept any interference received, including interference that may cause undesired operation.