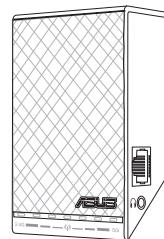




**ASUS**<sup>®</sup>

# RP-N14 Wireless-N300 Range Extender

RP-N14無線網路延伸器



## Quick Start Guide





English.....	3
繁體中文.....	11



APAC8662 / First Edition / Oct. 2013





## Package contents

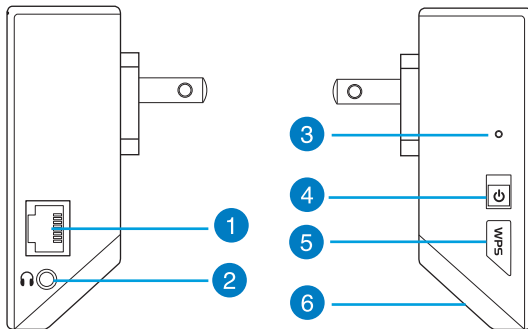
Range Extender

Quick Start Guide

**NOTE:** If any of the items is damaged or missing, please contact your retailer.

## A quick look

- 1) Ethernet port
- 2) Audio port
- 3) Reset button
- 4) Power On/Off button
- 5) WPS button
- 6) Night light



English



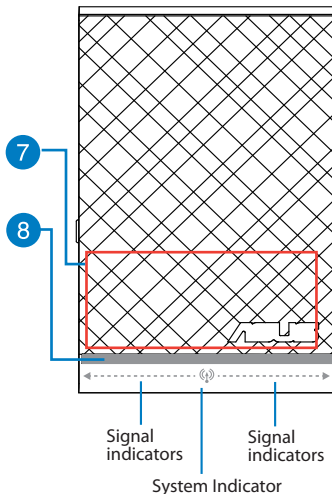
7) Touch controller

Touch the marked area to turn on/off the night light by default. You can log into the Range Extender's Web GUI to change the settings.

8) LED indicators

- System Indicator: The System Indicator lights up when the Range Extender is powered on and flashes when the Ethernet cable or audio cable is connected.
- Signal indicators: The lights indicate the connection signal strength from the Range Extender to the router.

Indicators	Performance
● ● ● ● ● ● ● ●	Excellent
○ ● ● ● ● ● ○	Good
○ ○ ● ● ● ○ ○	Poor
○ ○ ○ ● ○ ○ ○	No connection

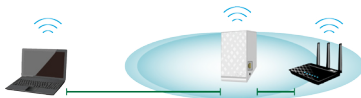




## Setting up the Range Extender

### Turning the Range Extender on

1. Place the Range Extender near your Router.
2. Plug the Range Extender into a power outlet, wait one minute for the system indicator to flash twice and turn into solid blue.



### Connecting to a network

Select one of the following ways to connect the Range Extender to a network.

#### Option A: Connecting through GUI

1. Use a computer/notebook/tablet PC to find and connect to **ASUS\_RPN14** wireless network.
2. Launch a web browser and enter <http://repeater.asus.com> or [192.168.1.1](http://192.168.1.1) in the address bar to access the Range Extender.
3. Enter the default login name and password, which are admin/admin.
4. Follow the **Quick Install Setup** steps below to set up the Range Extender:
  - Select the Wi-Fi network that you want to extend and enter its security password.

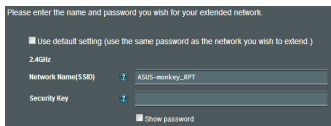
Wireless name	Channel	Security	Radio	Frequency
ASUS-wifi	6	WPA2-Personal (AES)		2.4G
ASUS-monkey	11	Open System (NONE) ⚠		2.4G
anne_itu66u	11	WPA2-Personal (AES)		2.4G

Security Key:

Show password



- Enter a name for the new Extender network.



- Connect your wireless devices to the new Extender network.



### Option B: Using WPS (Wi-Fi Protected Setup)

1. Press the WPS button on the side of the Range Extender for more than two seconds, until the system indicator flashes.
2. Press the WPS button on the router within two minutes.

**NOTE:** Refer to the router's manual for the location of the WPS button.

3. Check if the Range Extender's system indicator turns into solid blue, which indicates that the Range Extender has connected to the wireless network successfully. The Range Extender's wireless network name (SSID) changes to your existing Wi-Fi network name, ending with **\_RPT**. For example:

Existing network name: existing NetworkName

New network name: existing NetworkName\_RPT





To connect an additional Wi-Fi device to your Extender network, use the same network password as that of your existing wireless router.

### Move the Range Extender

When the connection is complete, locate the Range Extender between the router and the wireless device to get better performance.



**NOTE:** To get the best connection performance, ensure that at least two signal indicators light up.

### Signal Indicators

- To get the best performance, place the Range Extender between your router and wireless device.
- The signal indicators indicate the connection performance from the Range Extender to the Router. Refer to the LED indicators in section **A Quick Look**.
- If no signal indicator lights up, search the network again in **Option A** or make sure that your router supports WPS in **Option B**.

### Wireless Media Playback

The Range Extender supports wireless media playback, which allows you to stream and play your network music through its audio port. You can use ASUS AiPlayer app to control the music streaming over the Range Extender from your mobile device. Search for "RP-N14" or "ASUS AiPlayer" from Google Play or App Store and download the app to your mobile device.

#### NOTES:

- AiPlayer supports mp3, wav, flac, and acc files.
- You can insert an earphone, powered speaker, or stereo system to the 3.5mm stereo audio port.





## Frequently Asked Questions

### Q1: I cannot access the web GUI to configure the RP-N14 settings.

- Close all running web browsers and launch again.
- Follow the steps below to configure your computer settings based on its operating system.

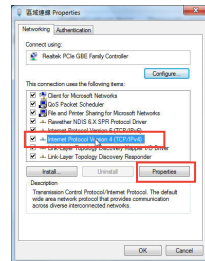
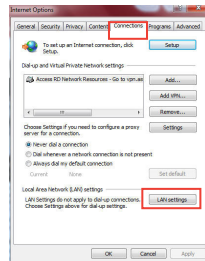
#### Windows 7

##### A. Disable the proxy server, if enabled.

1. Click **Start** > **Internet Explorer** to launch the web browser.
2. Click **Tools** > **Internet options** > **Connections** tab > **LAN settings**.
3. From the Local Area Network (LAN) Settings screen, untick **Use a proxy server for your LAN**.
4. Click **OK** when done.

##### B. Set the TCP/IP settings to automatically obtain an IP address.

1. Click **Start** > **Control Panel** > **Network and Internet** > **Network and Sharing Center** > **Manage network connections**.
2. Select **Internet Protocol Version 4 (TCP/IPv4)**, then click **Properties**.
3. Tick **Obtain an IP address automatically**.
4. Click **OK** when done.



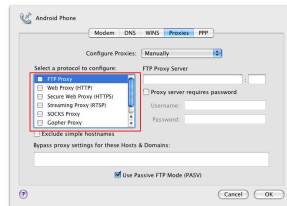




## Mac 10.5.8

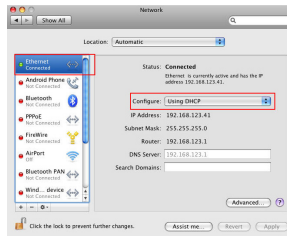
### A. Disable the proxy server, if enabled.

1. From the menu bar, click **Safari** > **Preferences...** > **Advanced** tab.
2. Click **Change Settings...** in the **Proxies** field.
3. From the list of protocols, deselect **FTP Proxy** and **Web Proxy (HTTP)**.
4. Click **OK** when done.



### B. Set the TCP/IP settings to automatically obtain an IP address.

1. Click the Apple icon > **System Preferences** > **Network**.
2. Select **Ethernet** and select **Using DHCP** in the **Configure** field.
3. Click **Apply** when done.



## Q2: Why doesn't the touch controller work?

- Ensure that you touch the area correctly. Refer to **A Quick Look** for the location of the touch area.





### Q3: My router security is WEP, and I entered a wrong passphrase or security key on the extender. Now I cannot access the Extender any more. What can I do?

- The Range Extender cannot check whether the WEP passphrase is correct or not. When entered a wrong passphrase, your wireless device cannot get the correct IP address from the Range Extender. Please reset the Range Extender to its factory defaults to get the IP address back.

### Q4: When I connect a speaker or stereo system to RP-N14, there is no sound coming out when I play audio files.

- Make sure that you have not turned off the audio output via the touch controller. The touch controller is set to turn on/off the night light and mute/unmute the audio by default. You can log into the Range Extender's Web GUI to change the settings.

<b>Manufacturer</b>	<b>ASUSTeK Computer Inc.</b> Tel: +886-2-2894-3447 Address: No. 150, LI-TE RD., PEITOU, TAIPEI 112, TAIWAN		
<b>Authorised representative in Europe</b>	<b>ASUS Computer GmbH</b> Address: HÄRKORT STR. 21-23, 40880 RATINGEN, GERMANY		
<b>Authorised distributors in Turkey</b>	<b>BOGAZICI BİL GİSAYAR SAN. VE TİC. A.Ş.</b> Tel: +90 212 3311000 Address: AYAZAGA MAH. KEMERBURGAZ CAD. NO.10 AYAZAGA/İSTANBUL	<b>CIZGI Elektronik San. Tic. Ltd. Sti.</b> Tel: +90 212 3567070 Address: CEMAL SURURI CD. HALİM MERIC İS MERKEZİ No: 15/C D:5-6 34394 MECİDİYEKOY/ İSTANBUL	<b>KOYUNCU ELEKTRONİK BİLGİ İŞLEM SİST. SAN. VE DİŞ TİC. A.Ş.</b> Tel: +90 216 5288888 Address: EMEK MAH.ORDU CAD. NO:18, SARIGAZI, SANCAKTEPE İSTANBUL

AEEE Yönetmeliğine Uygundur.





## 包裝內容

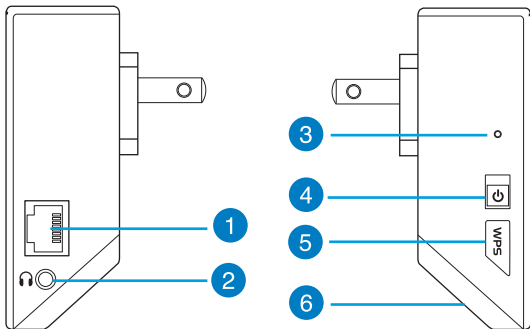
無線網路延伸器

快速使用指南

注意：若以上列出的任何一項配件有毀損或是短缺的情形，請盡速與您的經銷商聯絡。

## 概觀

- 1) 乙太網路連接埠
- 2) 音訊連接埠
- 3) 重置按鈕
- 4) 電源開啟 / 關閉按鈕
- 5) WPS 按鈕
- 6) 小夜燈





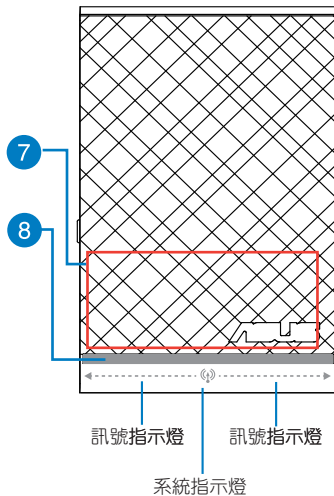
## 7) 觸控區

預設情況下，觸控標示的區域可以開啟或關閉小夜燈。您可以登入無線網路延伸器的網頁使用介面來變更設定。

## 8) LED 指示燈

- **系統指示燈**：當無線網路延伸器開啟時系統指示燈亮起，當連接乙太網路線或音訊線時，此指示燈閃爍。
- **訊號指示燈**：此指示燈指示無線網路延伸器對路由器的連接訊號強度。

指示燈	效能
● ● ● ● ● ● ● ●	卓越
○ ● ● ● ● ● ● ○	好
○ ○ ● ● ● ○ ○	差
○ ○ ○ ● ○ ○ ○	沒有連接





## 設定無線網路延伸器

### 開啟無線網路延伸器

1. 將無線網路延伸器放置在路由器旁邊。
2. 將無線網路延伸器連接電源，等待一分鐘直到系統指示燈閃爍二次後進入藍色常亮狀態。



### 連線到網路

使用以下任一方式將無線網路延伸器連線到網路：

#### 方法 A：透過圖形化使用者介面（GUI）連線

1. 使用電腦 / 筆記型電腦 / 平板電腦搜尋並連線到名為「ASUS\_RPN14」的無線網路。
2. 開啟一個網路瀏覽器，並在地址欄中輸入 <http://repeater.asus.com> 或 [192.168.1.1](http://192.168.1.1) 來存取無線網路延伸器。
3. 輸入預設的登入名稱與密碼：admin/admin。
4. 依據「Quick Install Setup」的步驟來設定無線網路延伸器：
  - 選擇您要延伸的無線網路，並輸入其安全金鑰。

Wireless name	Channel	Security	Radio	Frequency
ASUS-wifi	6	WPA2-Personal (AES)		2.4G
ASUS-monkey	11	Open System (NONE) ▲		2.4G
anne_rtu66u	11	WPA2-Personal (AES)		2.4G

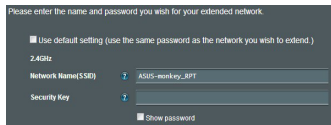
Security Key:

Show password





- 為新延伸的網路設定一個名稱。



- 將您的無線裝置連接到新的延伸網路。



### 方法 B：使用 WPS (Wi-Fi Protected Setup)

1. 按住無線網路延伸器側邊的 WPS 按鈕二秒鐘，直到系統指示燈開始閃爍。
2. 在二分鐘內按下路由器上的 WPS 按鈕。

注意：請參考路由器的使用手冊找到 WPS 按鈕的具體位置。

3. 檢視無線網路延伸器的系統指示燈是否變為藍色常亮，若是，則代表無線網路延伸器已成功連線到無線網路。無線網路延伸器的無線網路名稱 (SSID) 變更為目前的 Wi-Fi 網路名稱，以 \_RPT 結尾。例如：

目前 Wi-Fi 網路名稱：existing NetworkName

新的延伸網路名稱：existing NetworkName\_RPT

要使其他 Wi-Fi 裝置連線到延伸的網路，可使用目前無線路由器的網路密碼。





## 移動無線網路延伸器

連接完成後，將無線網路延伸器放置於路由器和無線裝置之間以獲得最佳的效能。

注意：要獲得最佳連接效能，請確保至少有二個訊號指示燈亮起。



## 訊號指示燈

- 要獲得最佳效能，請將無線網路延伸器放置於路由器和無線裝置之間。
- 訊號指示燈指示無線網路延伸器和路由器之間的連線效能。請參考「概觀」部份關於 LED 指示燈的說明。
- 若訊號指示燈未亮起，使用方法 A 的情況下請再次搜尋網路；使用方法 B 的情況下請確認您的路由器是否支援 WPS 功能。

## 無線媒體播放

無線網路延伸器支援無線媒體播放，您可以透過延伸器的音訊連接埠串流並播放網路上的音樂。您可以在行動裝置端使用 ASUS AiPlayer 來控制無線網路延伸器的音樂串流。在 Google Play 或 App Store 搜尋「RP-N14」或「ASUS AiPlayer」並下載至您的無線裝置。



注意：

- AiPlayer 支援 mp3、wav、flac 與 acc 格式之檔案。
- 您可以將耳機、接電源的喇叭或立體聲系統插入 3.5mm 立體聲音訊連接埠。





## 常見問題解答

### Q1: 我無法存取網頁圖形使用者介面 (web GUI) 來設定 RP-N14。

- 關閉所有正在運作的網路瀏覽器，並重新開啟。
- 依據不同的作業系統，依據以下步驟設定您的電腦。

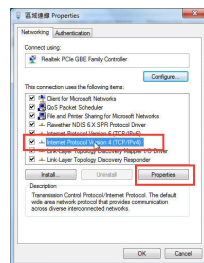
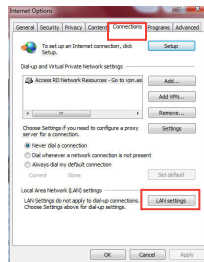
#### Windows 7

A. 若 proxy 伺服器開啟，請關閉。

1. 點選 開始 > Internet Explorer，開啟網路瀏覽器。
2. 點選 工具 > 網際網路選項 > 「連線」標籤頁 > 區域網路設定。
3. 在「區域網路設定」畫面中，取消勾選「在您的區域網路使用 Proxy 伺服器」核選方塊。
4. 完成後，按一下 確定。

B. 將 TCP/IP 設定為自動取得 IP 位址。

1. 點選 開始 > 控制台 > 網路和網際網路 > 網路和共用中心 > 管理網路連線。
2. 選擇「網際網路通訊協定第 4 版 (TCP/IPv4)」，接著按一下 內容。
3. 勾選「自動取得 IP 位址」。
4. 完成後，按一下 確定。



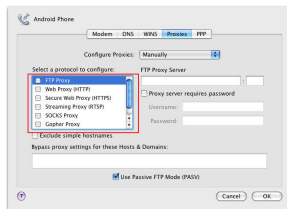




### Mac 10.5.8

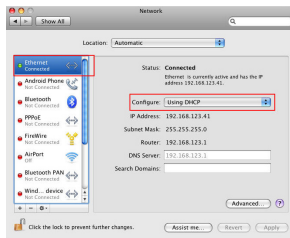
A. 若 proxy 伺服器開啟，請關閉。

1. 在選單列中，點選 Safari > 偏好設定... > 「進階」標籤頁。
2. 按一下 變更設定...。
3. 在協定清單中，取消選擇「FTP Proxy」與「Web Proxy (HTTP)」。
4. 完成後，按一下 確定。



B. 將 TCP/IP 設定為自動取得 IP 位址。

1. 點選 Apple 圖示 > 系統偏好設定 > 網路。
2. 在設定區域中，選擇網際網路並選擇使用 DHCP。
3. 完成後，按一下 套用。



### Q2: 為什麼無法控制觸控區域？

- 確定您觸控了正確的區域。請參考「概觀」部份關於觸控區位置的說明。





**Q3: 我的路由器安全設定為 WEP，但我在無線網路延伸器上輸入了錯誤的金鑰。現在我無法存取無線網路延伸器，該怎麼辦？**

- 無線網路延伸器無法檢查 WEP 金鑰是否正確。若輸入了錯誤的金鑰，您的無線裝置將無法從無線網路延伸器獲得正確的 IP 位址。請將無線網路延伸器重置至出廠預設設定重新獲得 IP 位址。

**Q4: 將喇叭或立體聲系統連接到 RP-N14 後，播放音效檔案仍然沒有聲音。為什麼？**

- 確定您未透過觸控區域關閉音訊輸出。預設情況下，觸控區域設定為用來開啟/關閉小夜燈或者靜音模式。您可以登入無線網路延伸器的網頁使用介面來變更設定。





## Federal Communications Commission Statement

This device complies with Part 15 of the FCC Rules. Operation is subject to the following two conditions:

- This device may not cause harmful interference.
- This device must accept any interference received, including interference that may cause undesired operation.

This equipment has been tested and found to comply with the limits for a class B digital device, pursuant to part 15 of the FCC Rules. These limits are designed to provide reasonable protection against harmful interference in a residential installation.

This equipment generates, uses and can radiate radio frequency energy and, if not installed and used in accordance with the instructions, may cause harmful interference to radio communications. However, there is no guarantee that interference will not occur in a particular installation. If this equipment does cause harmful interference to radio or television reception, which can be determined by turning the equipment off and on, the user is encouraged to try to correct the interference by one or more of the following measures:

- Reorient or relocate the receiving antenna.
- Increase the separation between the equipment and receiver.
- Connect the equipment into an outlet on a circuit different from that to which the receiver is connected.
- Consult the dealer or an experienced radio/TV technician for help.



---

**Warning:** Any changes or modifications not expressly approved by the party responsible for compliance could void the user's authority to operate the equipment. Prohibition of Co-location This device and its antenna(s) must not be co-located or operating in conjunction with any other antenna or transmitter.

---





### **FCC Mark Warning**

This equipment must be installed and operated in accordance with provided instructions and the antenna(s) used for this transmitter must be installed to provide a separation distance of at least 20cm from all persons and must not be co-located or operated in conjunction with any other antennas or transmitters. End users and installers must be provided with antenna installation instructions and transmitter operating conditions for satisfying RF exposure compliance.

### **Prohibition of Co-location**

This device and its antenna(s) must not be co-located or operating in conjunction with any other antenna or transmitter.

### **IMPORTANT NOTE:**

**Radiation Exposure Statement:** This equipment complies with FCC radiation exposure limits set forth for an uncontrolled environment. End users must follow the specific operating instructions for satisfying RF exposure compliance. To maintain compliance with FCC exposure compliance requirement, please follow operation instruction as documented in this manual.

### **Declaration of Conformity for R&TTE directive 1999/5/EC**

Essential requirements – Article 3

Protection requirements for health and safety – Article 3.1a

Testing for electric safety according to EN 60950-1 has been conducted. These are considered relevant and sufficient.

Protection requirements for electromagnetic compatibility – Article 3.1b

Testing for electromagnetic compatibility according to EN 301 489-1 and EN 301 489-17 has been conducted. These are considered relevant and sufficient.

Effective use of the radio spectrum – Article 3.2





Testing for radio test suites according to EN 300 328- 2 has been conducted. These are considered relevant and sufficient.

### **CE Mark Warning**

This is a Class B product, in a domestic environment, this product may cause radio interference, in which case the user may be required to take adequate measures. Operation Channels: CH1~11 for N. America; Ch1~14 for Japan; CH1~13 for Europe (ETSI)

### **Canada, Industry Canada (IC) Notices**

This Class B digital apparatus complies with Canadian ICES-003 and RSS-210.

Operation is subject to the following two conditions: (1) this device may not cause interference, and (2) This device must accept any interference, including interference that may cause undesired operation of the device.

### **Radio Frequency (RF) Exposure Information**

The radiated output power of the ASUS Wireless Device is below the Industry Canada (IC) radio frequency exposure limits. The ASUS Wireless Device should be used in such a manner such that the potential for human contact during normal operation is minimized.

This device has been evaluated for and shown compliant with the IC Specific Absorption Rate ("SAR") limits when installed in specific host products operated in portable exposure conditions (antennas are less than 20 centimeters of a person's body).

This device has been certified for use in Canada. Status of the listing in the Industry Canada's REL (Radio Equipment List) can be found at the following web address: <http://www.ic.gc.ca/app/sitt/retel/srch/nwRdSrch.do?lang=eng>

Additional Canadian information on RF exposure also can be found at the following web address: <http://www.ic.gc.ca/eic/site/smt-gst.nsf/eng/sf08792.html>





## Canada, avis d'Industry Canada (IC)

Cet appareil numérique de classe B est conforme aux normes canadiennes ICES-003 et RSS-210.

Son fonctionnement est soumis aux deux conditions suivantes : (1) cet appareil ne doit pas causer d'interférence et (2) cet appareil doit accepter toute interférence, notamment les interférences qui peuvent affecter son fonctionnement.

### Informations concernant l'exposition aux fréquences radio (RF)

La puissance de sortie émise par l'appareil de sans fil ASUS est inférieure à la limite d'exposition aux fréquences radio d'Industry Canada (IC). Utilisez l'appareil de sans fil ASUS de façon à minimiser les contacts humains lors du fonctionnement normal.

Ce périphérique a été évalué et démontré conforme aux limites SAR (Specific Absorption Rate – Taux d'absorption spécifique) d'IC lorsqu'il est installé dans des produits hôtes particuliers qui fonctionnent dans des conditions d'exposition à des appareils portables (les antennes se situent à moins de 20 centimètres du corps d'une personne).

Ce périphérique est homologué pour l'utilisation au Canada. Pour consulter l'entrée correspondant à l'appareil dans la liste d'équipement radio (REL - Radio Equipment List) d'Industry Canada rendez-vous sur: <http://www.ic.gc.ca/app/sitt/reltel/srch/nwRdSrch.do?lang=eng>

Pour des informations supplémentaires concernant l'exposition aux RF au Canada rendez-vous sur : <http://www.ic.gc.ca/eic/site/smt-gst.nsf/eng/sf08792.html>

### Industry Canada Statement

This device complies with RSS-210 of the industry Canada Rules. Operation is subject to the following two conditions:

- This device may not cause harmful interference.
- This device must accept any interference received, including interference that may cause undesired operation.





### IMPORTANT NOTE:

**Radiation Exposure Statement:** This equipment complies with IC radiation exposure limits set forth for an uncontrolled environment. End users must follow the specific operating instructions for satisfying RF exposure compliance. To maintain compliance with IC RF exposure compliance requirement, please follow operation instruction as documented in this manual.

### NCC 警語

經型式認證合格之低功率射頻電機，非經許可，公司、商號或使用者均不得擅自變更頻率、加大功率或變更原設計之特性及功能。低功率射頻電機之使用不得影響飛航安全及干擾合法通信；經發現有干擾現象時，應立即停用，並改善至無干擾時方得繼續使用。

前項合法通信，指依電信法規定作業之無線電通信。低功率射頻電機須忍受合法通信或工業、科學及醫療用電波輻射性電機設備之干擾。

### REACH

Complying with the REACH (Registration, Evaluation, Authorisation, and Restriction of Chemicals) regulatory framework, we published the chemical substances in our products at ASUS REACH website at <http://csr.asus.com/english/REACH.htm>

### ASUS Recycling/Takeback Services

ASUS recycling and takeback programs come from our commitment to the highest standards for protecting our environment. We believe in providing solutions for you to be able to responsibly recycle our products, batteries, other components, as well as the packaging materials. Please go to <http://csr.asus.com/english/Takeback.htm> for the detailed recycling information in different regions.

This equipment may be operated in AT, BE, CY, CZ, DK, EE, FI, FR, DE, GR, HU, IE, IT, LU, MT, NL, PL, PT, SK, SL, ES, SE, GB, IS, LI, NO, CH, BG, RO, TR.





## Networks Global Hotline Information

Area	Hotline Number	Support Languages	Availability
Australia	1300-2787-88	English	Mon. to Fri.8:00-20:00
Austria	0043-820240513	German	Mon. to Fri.9:00-18:00
Belgium	0032-78150231	Dutch /French	Mon. to Fri.9:00-17:00
China	400-620-6655	Simplified Chinese	Mon. to Sun.9:00-18:00
Denmark	0045-3832-2943	Danish/English	Mon. to Fri.9:00-17:00
Finland	00358-9693-7969	Finnish/English/Swedish	Mon. to Fri.10:00-18:00
France	0033-170949400	French	Mon. to Fri.9:00-17:45
Greece	00800-44-14-20-44	Greek	Mon. to Fri. 9:00-13:00/14:00-18:00
Hong Kong	3582-4770	Cantonese/ Chinese/English	Mon. to Fri.10:00-20:00 Sat.10:00-17:00
Indonesia	+62-21-500128	Indonesia, English	Mon. to Fri9:30 - 17: 00
Ireland	0035-31890719918	English	Mon. to Fri.9:00-17:00
Italy	199-400089	Italian	Mon. to Fri. 9:00-13:00/14:00-18:00
Japan	0800-123-2787	Japanese	Mon. to Fri.9:00-18:00 Sat. to Sun.9:00-17:00







## Networks Global Hotline Information

Malaysia	+603 2148 0827 (Check Repair Detail Status Only)/ +603-6279-5077	Bahasa Melayu/ English	Mon. to Fri.10:00-19:00
Netherlands / Luxembourg	0031-591-570290	Dutch / English	Mon. to Fri.9:00-17:00
New Zealand	0800-278-788/ 0800-278-778	English	Mon. to Fri.9:00-17:00
Norway	0047-2316-2682	Norwegian /English	Mon. to Fri.9:00-17:00
Philippines	+632-636 8504/ 180014410573	English	Mon. to Fri.9:00-18:00
Poland	00225-718-033/ 00225-718-040	Polish	Mon. to Fri. 9:00-17:008:30-17:30
Portugal	707-500-310	Portuguese	Mon. to Fri.9:00-17:00
Russia	+8-800-100-ASUS/ +7-495-231-1999	Russian/ English	Mon. to Fri.9:00-18:00
Singapore	+65-6720-3835 (Check Repair Detail Status Only)/ +65-66221701	English	Mon. to Fri. 11:00-19:00
Slovak	00421-232-162-621	Czech	Mon. to Fri.8:00-17:00





## Networks Global Hotline Information

Spain	902-88-96-88	Spanish	Mon. to Fri.9:00-18:00
Sweden	0046-8587-6940	Swedish/English	Mon. to Fri.9:00-17:00
Switzerland	0041-848111010	German/French	Mon. to Fri.9:00-18:00
	0041-848111014	French	Mon. to Fri.9:00-17:45
	0041-848111012	Italian	Mon. to Fri.9:00-17:00
Taiwan	0800-093-456/ 02-81439000	Traditional Chinese	Mon. to Fri. 9:00-12:00/13:30-18:00
Thailand	+662-679-8367 -70/ 001 800 852 5201	Thai/English	Mon. to Fri. 9:00-18:00
Turkey	+90-216-524-3000	Turkish	Mon. to Fri.09:00-18:00
United Kingdom	0044-870-1208340/ 0035-31890719918	English	Mon. to Fri.9:00-17:00
USA/Canada	1-812-282-2787	English	Mon. to Fri. 8:30am-12:00am EST (5:30am- 9:00pm PST)  Sat .to Sun. 9:00am-6:00pm EST (6:00am- 3:00pm PST)





## **MANUFACTURER**

**ASUSTeK Computer Inc.**

Tel: +886-2-2894-3447

Address: 4F, No. 150, LI-TE RD., PEITOU, TAIPEI 112, TAIWAN

## **AUTHORISED REPRESENTATIVE IN EUROPE**

**ASUS Computer GmbH**

Address: HARKORT STR. 21-23, 40880 RATINGEN, GERMANY

## **AUTHORISED DISTRIBUTORS IN TURKEY**

**BOGAZICI BIL GISAYAR SAN. VE TIC. A.S.**

Tel: +90 212 3311000

Address: AYAZAGA MAH. KEMERBURGAZ CAD. NO.10 AYAZAGA/ISTANBUL

**CIZGI Elektronik San. Tic. Ltd. Sti.**

Tel: +90 212 3567070

Address: CEMAL SURURI CD. HALIM MERIC IS MERKEZI

No: 15/C D:5-6 34394 MECIDIYEKOY/ ISTANBUL

AEEE Yönetmeliğine Uygundur.

