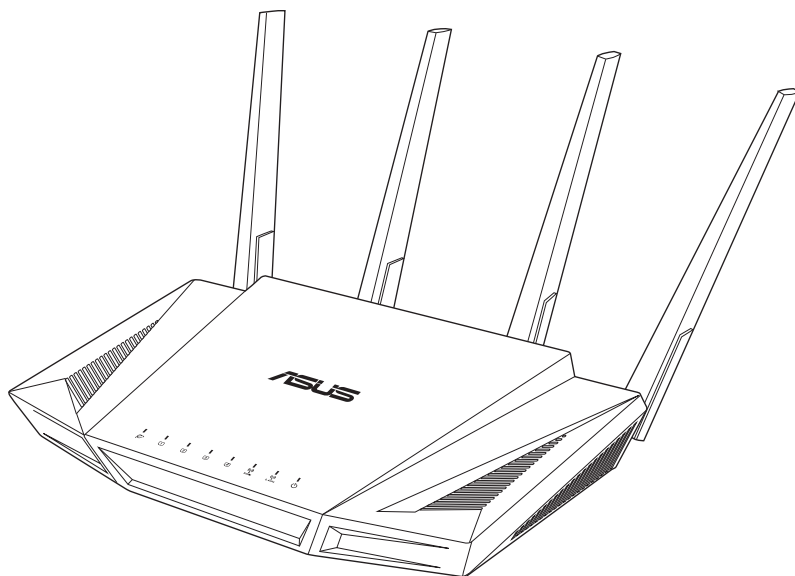




AX3000 Dual Band Wi-Fi Router

AX3000 同步雙頻無線路由器



RT-AX58U, RT-AX82U

Quick Start Guide

Q15622 / First Edition / July 2019

Table of contents

| | |
|---|----|
| Package contents | 3 |
| A quick look at RT-AX58U | 3 |
| Position your wireless router | 4 |
| Preparing your modem | 5 |
| Setting up your RT-AX58U | 6 |
| A. Wired connection | 6 |
| B. Wireless connection..... | 6 |
| FAQ | 8 |
| Networks Global Hotline Information | 65 |

This QSG contains these languages:

English

繁體中文

Français

Bahasa Indonesia

Bahasa Malaysia

Português

Español

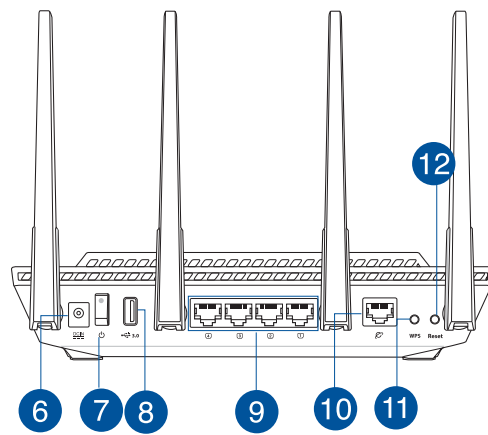
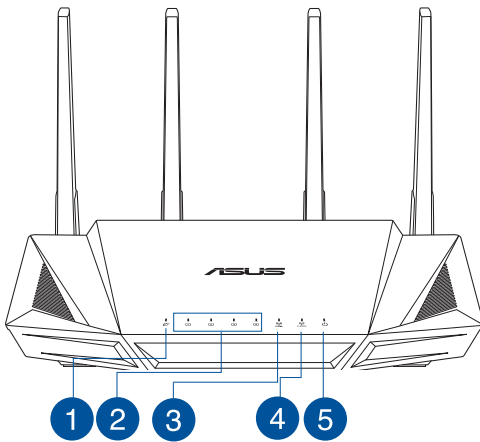
ไทย

Tiếng Việt

Package contents

- ☑ RT-AX58U Wireless Router
- ☑ Network cable (RJ-45)
- ☑ AC adapter
- ☑ Quick Start Guide

A quick look at RT-AX58U

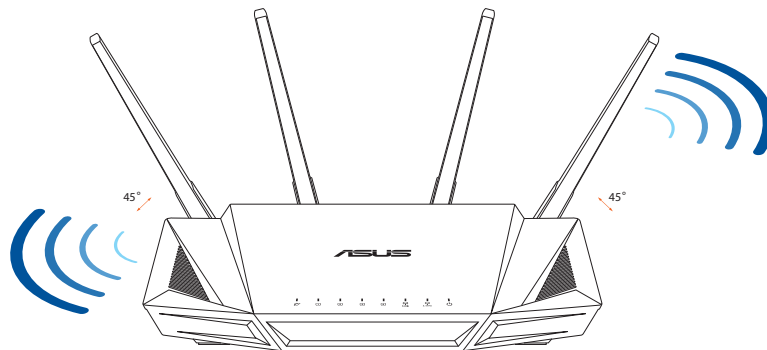


| | |
|----------------------|------------------------|
| 1 WAN (Internet) LED | 7 Power button |
| 2 LAN 1~4 LEDs | 8 USB3.0 port |
| 3 5GHz LED | 9 LAN 1 ~ 4 ports |
| 4 2.4GHz LED | 10 WAN (Internet) port |
| 5 Power LED | 11 WPS button |
| 6 Power (DC-IN) port | 12 Reset button |

Position your wireless router

For optimal wireless transmission between the wireless router and connected wireless devices, ensure that you:

- Place the wireless router in a centralized area for a maximum wireless coverage for the network devices.
- Keep the wireless router away from metal obstructions and away from direct sunlight.
- Keep the wireless router away from 802.11g or 20MHz only Wi-Fi devices, 2.4GHz computer peripherals, Bluetooth devices, cordless phones, transformers, heavy-duty motors, fluorescent lights, microwave ovens, refrigerators, and other industrial equipment to prevent signal interference or loss.
- Always update to the latest firmware. Visit the ASUS website at <http://www.asus.com> to get the latest firmware updates.
- To ensure the best wireless signal, orient the four non-detachable antennas as shown in the drawing below.



NOTES:

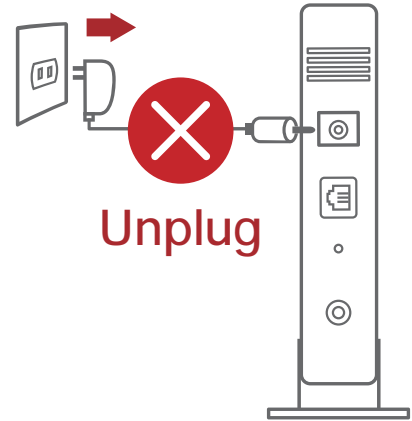
- Use only the adapter that came with your package. Using other adapters may damage the device.
- **Specifications:**

| | | | |
|------------------------------|------------------------------------|---------|--------|
| DC Power adapter | DC Output: +19V with 1.75A current | | |
| Operating Temperature | 0~40°C | Storage | 0~70°C |
| Operating Humidity | 50~90% | Storage | 20~90% |

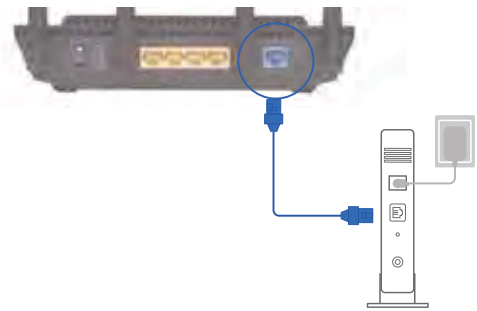
Preparing your modem

1. **Unplug the power cable/DSL modem. If it has a battery backup, remove the battery.**

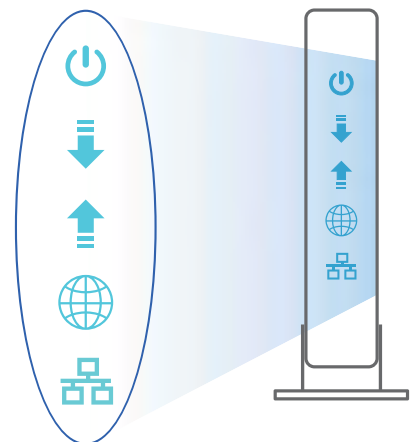
NOTE: If you are using DSL for Internet, you will need your username/password from your Internet Service Provider (ISP) to properly configure the router.



2. **Connect your modem to the router with the bundled network cable.**



3. **Power on your cable/DSL modem.**
4. **Check your cable/DSL modem LED lights to ensure the connection is active.**

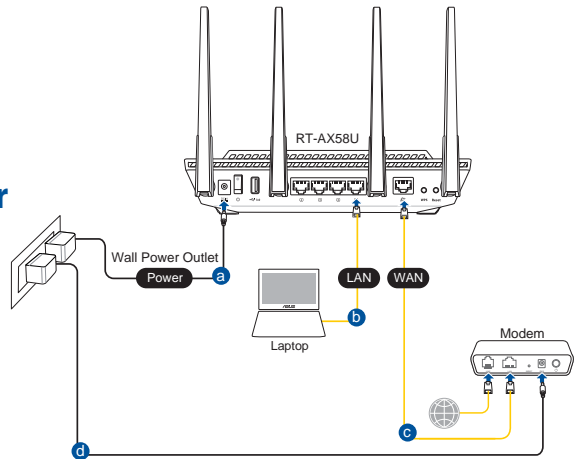


Setting up your RT-AX58U

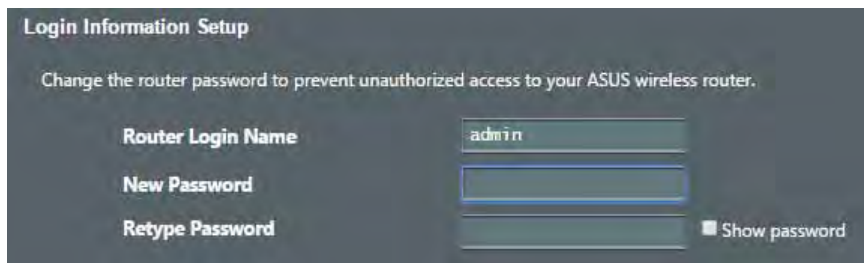
You can set up your router via wired or wireless connection.

A. Wired connection

1. Plug your router into a power outlet and power it on. Connect the network cable from your computer to a LAN port on your router.

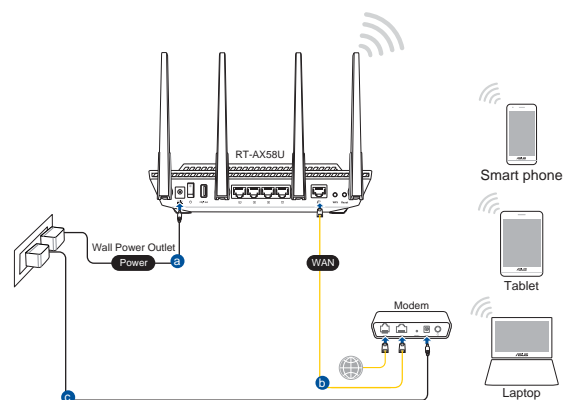


2. The web GUI launches automatically when you open a web browser. If it does not auto-launch, enter <http://router.asus.com>.
3. Set up a password for your router to prevent unauthorized access.



B. Wireless connection

1. Plug your router into a power outlet and power it on.



2. **Connect to the network with SSID shown on the product label on the back side of the router. For better network security, change to a unique SSID and assign a password.**



| | |
|-------------------------|------------|
| 2.4G Wi-Fi Name (SSID): | ASUS_XX_2G |
|-------------------------|------------|

| | |
|-----------------------|------------|
| 5G Wi-Fi Name (SSID): | ASUS_XX_5G |
|-----------------------|------------|

- * **XX** refers to the last two digits of 2.4GHz MAC address. You can find it on the label on the back of your router.

3. **You can choose either the web GUI or ASUS Router app to set up your router.**

- a. **Web GUI Setup**

- **Once connected, the web GUI launches automatically when you open a web browser. If it does not auto-launch, enter <http://router.asus.com>.**
- **Set up a password for your router to prevent unauthorized access.**

A screenshot of the 'Login Information Setup' page in the ASUS Router web GUI. The page has a dark background and white text. It instructs the user to 'Change the router password to prevent unauthorized access to your ASUS wireless router.' There are three input fields: 'Router Login Name' with the value 'admin', 'New Password', and 'Retype Password'. A 'Show password' checkbox is located to the right of the 'Retype Password' field.

b. App Setup

Download ASUS Router App to set up your router via your mobile devices.

- Turn on Wi-Fi on your mobile devices and connect to your router's network.
- Follow ASUS Router App setup instructions to complete the setup.



ASUS
Router



Remembering your wireless router settings

- Remember your wireless settings as you complete the router setup.

| | |
|-----------------------|-----------|
| Router Name: | Password: |
| 2.4 GHz network SSID: | Password: |
| 5GHz network SSID: | Password: |

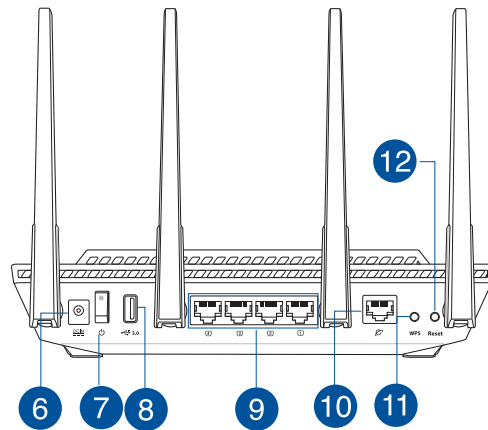
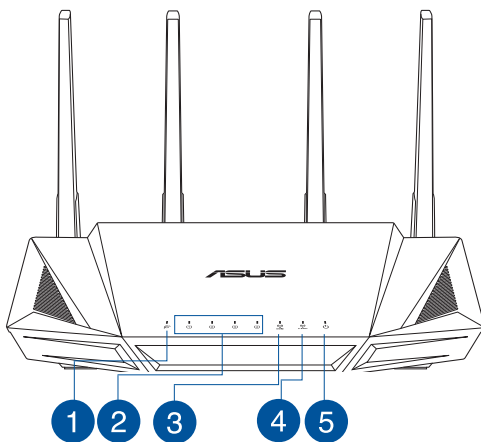
FAQ

1. Where can I find more information about the wireless router?
 - Online FAQ site: <https://www.asus.com/support/faq>
 - Technical support site: <https://www.asus.com/support>
 - Customer hotline: refer to the Support Hotline section in this Quick Start Guide
 - You can get the user manual online at <https://www.asus.com/support>

產品包裝內容

- RT-AX58U 無線路由器
- 電源變壓器
- RJ-45 網路線
- 快速使用指南

認識您的無線路由器



| | |
|--------------------|---------------------|
| 1 WAN (網際網路) 指示燈 | 8 USB 3.1 連接埠 |
| 2 LAN 1~4 指示燈 | 9 LAN 1 ~ 4 網路連接埠 |
| 3 5GHz 指示燈 | 10 WAN (網際網路) 連接埠 |
| 4 2.4GHz 指示燈 | 11 WPS 按鈕 |
| 5 電源指示燈 | 12 重置按鈕 |
| 6 電源 (DC-IN) 連接埠 | |
| 7 電源開關 | |

放置您的路由器

為獲得無線路由器與所連線的網路裝置之間傳送最佳無線訊號，請確認以下幾點：

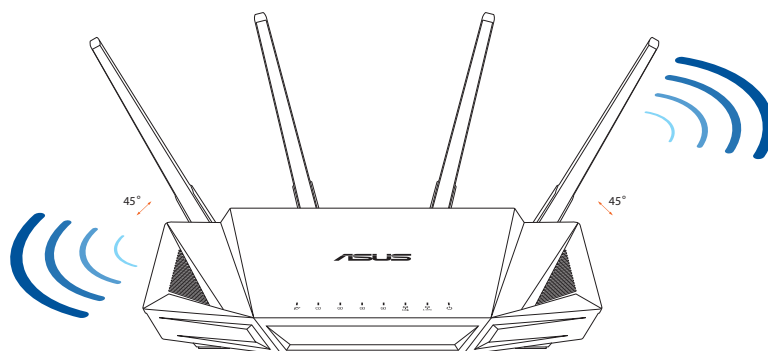
建議將路由器放置在中心區域，以獲得最佳無線訊號覆蓋範圍。

請勿將裝置放在靠近金屬物品與陽光直射的地方。

請遠離其它 802.11g 或 20MHz Wi-Fi 裝置、2.4GHz 電腦周邊裝置、藍牙裝置、無線室內電話、傳送器、重型發動機、日光燈、微波爐、電冰箱與其他工業裝置，以防止訊號干擾或減損。

請經常更新至最新版本韌體。您可以登入華碩官網 <https://www.asus.com/tw/> 獲得最新韌體。

請依據下圖所示擺放路由器上的四根非可拆式天線以獲得最佳無線訊號覆蓋範圍。



注意：

請僅使用包裝中的電源變壓器。使用其他種類的電源變壓器可能會造成裝置損毀。

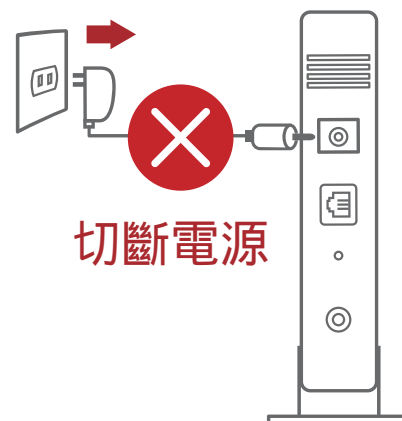
規格：

| | | | |
|---------|-----------------------------|------|---------|
| 直流電源變壓器 | DC 輸出：+19V 電壓，支援最大 1.75A 電流 | | |
| 運作溫度 | 0~40 °C | 儲存溫度 | 0~70 °C |
| 運作濕度 | 50~90% | 儲存溫度 | 20~90% |

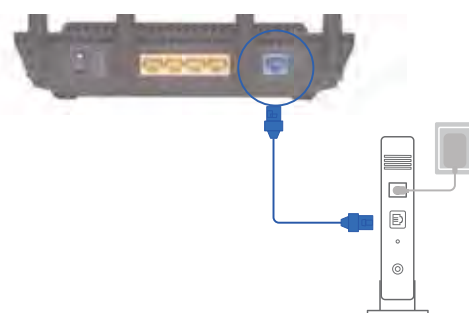
準備數據機

1. 拔除您的電纜 / DSL 數據機電源，若數據機內含備用電池，請移除電池。

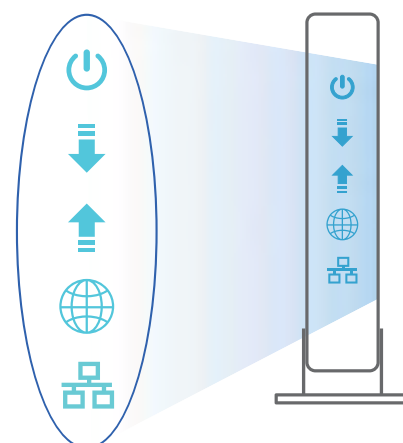
注意：若您使用 DSL 連線網際網路，需要向您的網路服務供應商（ISP）取得登入名稱 / 密碼，以正確設定您的無線路由器。



2. 使用隨附的網路線連接您的數據機與無線路由器。



3. 開啟您的纜線 / DSL數據機。
4. 查看數據機的 LED 指示燈以確認連線是否已準備就緒。

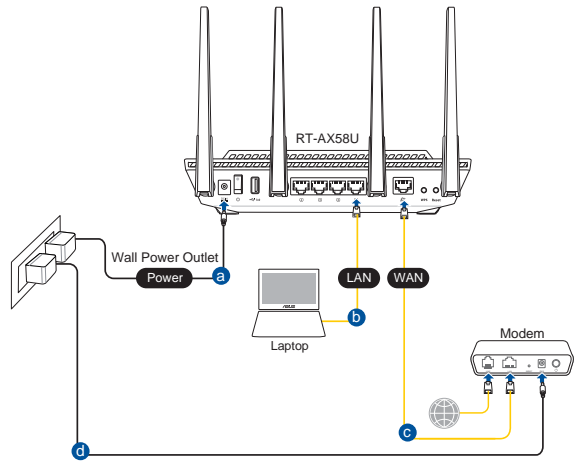


設定您的路由器

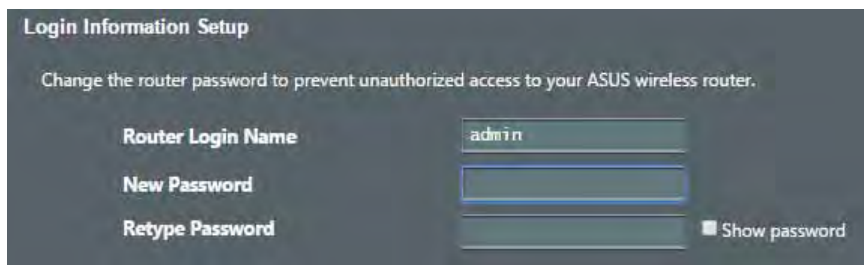
您可以透過有線或無線兩種方式設定您的無線路由器。

A. 有線連線

- 將您的無線路由器與電源相連並開機。用網路線將您的電腦與無線路由器的 LAN 連接埠相連。

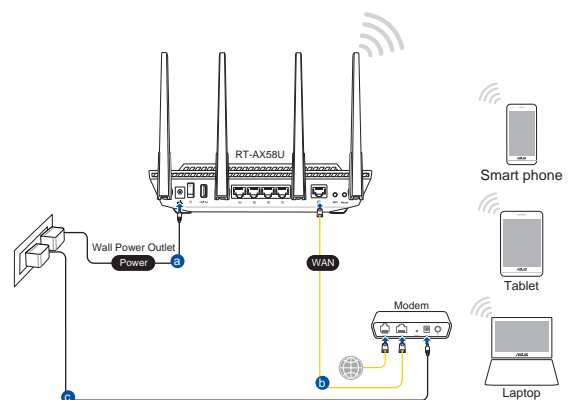


- 當您開啟網頁瀏覽器時，網頁設定介面會自動出現。若沒有出現，請在網址欄中輸入 <http://router.asus.com>。
- 為無線路由器設定密碼以阻止未經授權的存取。



B. 無線連線

- 將您的無線路由器與電源相連並開機。



2. 連接到無線路由器後側標籤上註明的網路名稱 (SSID)。為確保最佳的網路安全性，請更改預設的 SSID 和密碼。



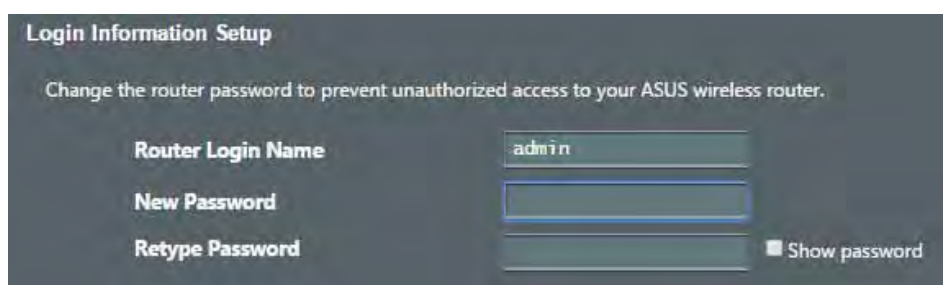
| | |
|------------------------|------------|
| 2.4G Wi-Fi 名稱 (SSID) : | ASUS_XX_2G |
| 5G Wi-Fi 名稱 (SSID) : | ASUS_XX_5G |

* XX 代表 2.4GHz MAC 位址的最後兩位數，您可以在路由器背部的貼紙上找到。

3. 您可以在網頁瀏覽器或 ASUS Router App 中設定您的路由器。
 - a. 透過網頁瀏覽器設定

連線網路後，當您開啟網頁瀏覽器時，網頁設定介面會自動出現。若沒有出現，請在網址欄中輸入 <http://router.asus.com>。

為無線路由器設定密碼以阻止未經授權的存取。



b. 透過 App 設定

透過行動裝置下載 ASUS Router App 以設定您的路由器。

開啟行動裝置的 Wi-Fi 並連線至無線路由器的網路。

遵照 ASUS Router App 設定嚮導完成路由器設定。



ASUS Router



記住無線路由器的設定

完成無線路由器的設定後，請記住您的無線設定。

| | |
|-----------------|-----|
| 路由器登入名稱： | 密碼： |
| 2.4GHz 網路 SSID： | 密碼： |
| 5GHz 網路 SSID： | 密碼： |

FAQ

1. 哪裡可以找到更多的無線路由器資訊？

線上 FAQ 網址：<https://www.asus.com/tw/support>

技術支援網址：<https://www.asus.com/tw/support>

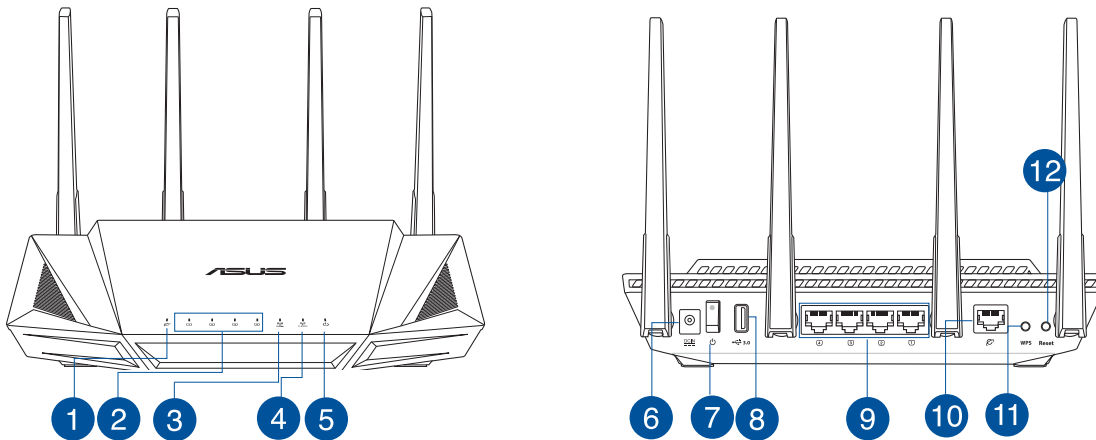
客戶服務熱線：請參閱此快速使用指南的支援熱線（Hotline）

您可至 <https://www.asus.com/tw/support> 下載使用手冊

Contenu de la boîte

- ☑ Routeur Wi-Fi RT-AX58U
 - ☑ Câble réseau (RJ-45)
- ☑ Adaptateur secteur
 - ☑ Guide de démarrage rapide

Aperçu rapide de votre routeur RT-AX58U

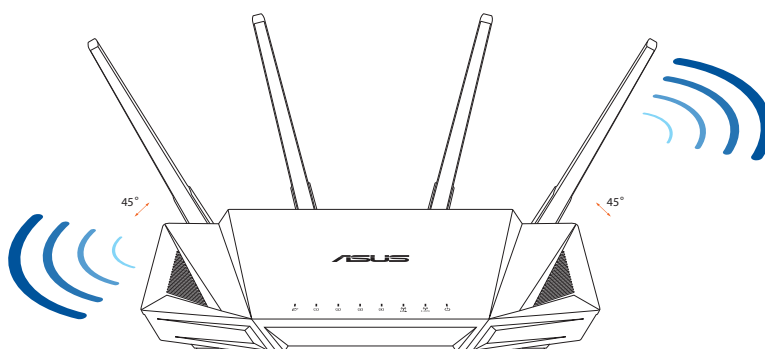


| | |
|---|--|
| <p>1 Voyant réseau étendu (WAN) (Internet)</p> | <p>7 Bouton d'alimentation</p> |
| <p>2 Voyants réseau local (LAN) 1 à 4</p> | <p>8 Port USB 3.0</p> |
| <p>3 Voyant de bande 5 GHz</p> | <p>9 Ports réseau local (LAN) 1 à 4</p> |
| <p>4 Voyant de bande 2,4 GHz</p> | <p>10 Port réseau étendu (WAN) (Internet)</p> |
| <p>5 Voyant d'alimentation</p> | <p>11 Bouton WPS</p> |
| <p>6 Port d'alimentation (CC)</p> | <p>12 Bouton de réinitialisation</p> |

Placez le routeur Wi-Fi

Pour optimiser la transmission du signal Wi-Fi entre votre routeur et les périphériques réseau y étant connectés, veuillez vous assurer des points suivants :

- Placez le routeur Wi-Fi dans un emplacement central pour obtenir une couverture Wi-Fi optimale.
- Maintenez le routeur à distance des obstructions métalliques et des rayons du soleil.
- Maintenez le routeur à distance d'appareils ne fonctionnant qu'avec les normes/fréquences Wi-Fi 802.11g ou 20MHz, les périphériques 2,4 GHz et Bluetooth, les téléphones sans fil, les transformateurs électriques, les moteurs à service intense, les lumières fluorescentes, les micro-ondes, les réfrigérateurs et autres équipements industriels pour éviter les interférences ou les pertes de signal Wi-Fi.
- Mettez toujours le routeur à jour dans la version de firmware la plus récente. Visitez le site Web d'ASUS sur <http://www.asus.com> pour consulter la liste des mises à jour.
- Pour obtenir le meilleur signal Wi-Fi, orientez les quatre antennes non détachables comme illustré sur le schéma ci-dessous.



REMARQUES :

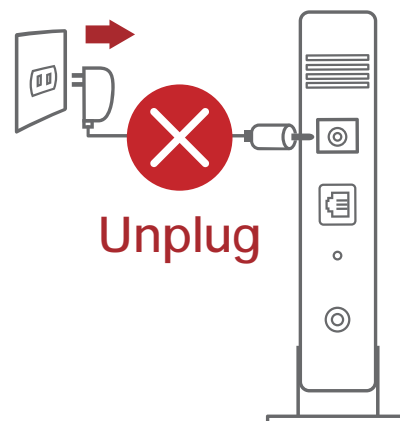
- Utilisez uniquement l'adaptateur secteur fourni avec votre appareil. L'utilisation d'autres adaptateurs peut endommager l'appareil.
- **Caractéristiques :**

| | | | |
|--------------------------------------|------------------------------|----------|---------|
| Adaptateur secteur CC | Sortie CC : +19V (max 1,75A) | | |
| Température de fonctionnement | 0-40°C | Stockage | 0-70°C |
| Humidité de fonctionnement | 50-90 % | Stockage | 20-90 % |

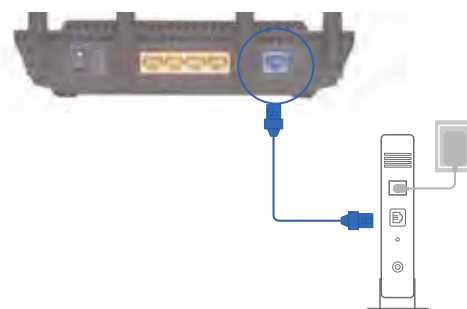
Préparer votre modem

1. Débranchez le câble d'alimentation / le modem DSL. Si votre modem possède une batterie de secours, retirez-la.

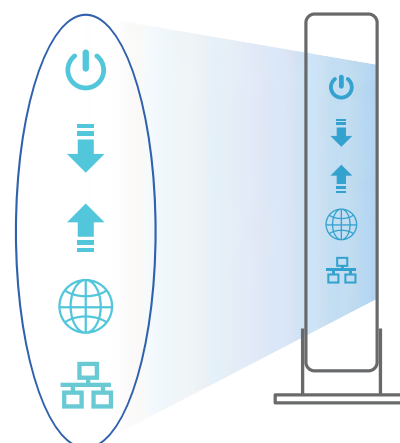
REMARQUE : Si vous utilisez le DSL pour accéder à Internet, vous aurez besoin du nom d'utilisateur et du mot de passe fournis par votre fournisseur d'accès internet (FAI) pour configurer votre routeur.



2. Raccordez votre modem au routeur à l'aide du câble réseau fourni.



3. Allumez votre modem câble/DSL.
4. Vérifiez les voyants lumineux de votre modem câble/DSL pour vous assurer que la connexion est établie.

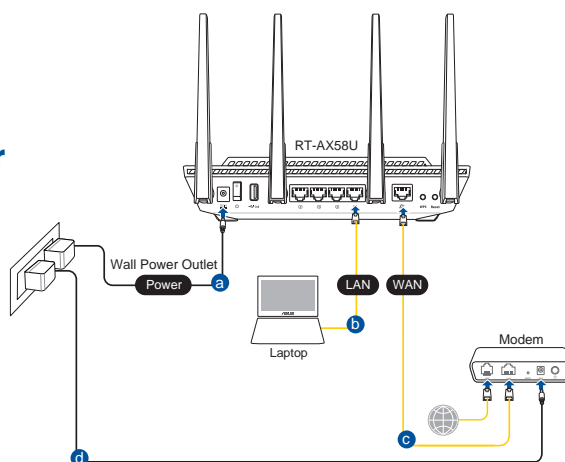


Configurer votre RT-AX58U

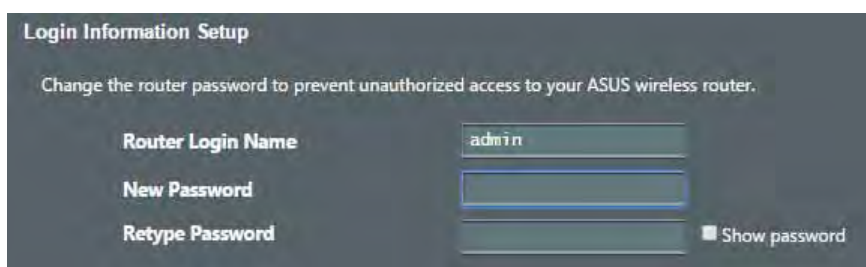
Vous pouvez configurer votre routeur via une connexion filaire ou Wi-Fi.

A. Connexion filaire

1. Branchez le routeur sur une prise électrique, puis allumez-le. Utilisez le câble réseau pour relier votre ordinateur au port de réseau local (LAN) du routeur.

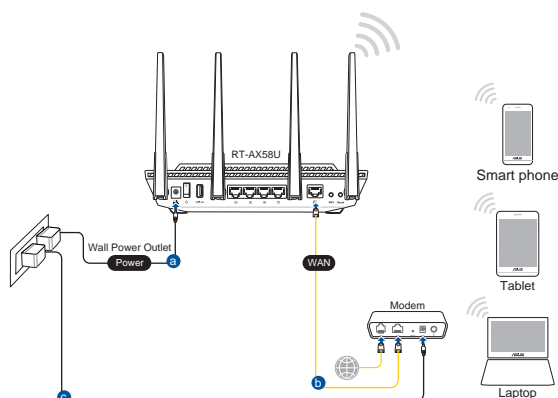


2. L'interface de gestion du routeur s'affiche automatiquement lors de l'ouverture de votre navigateur internet. Si ce n'est pas le cas, entrez <http://router.asus.com> dans la barre d'adresse.
3. Définissez un mot de passe afin d'éviter les accès non autorisés au routeur.



B. Connexion Wi-Fi

1. Branchez le routeur sur une prise électrique, puis allumez-le.



2. **Connectez-vous au réseau dont le nom (SSID) est affiché sur l'étiquette du produit située à l'arrière du routeur. Pour garantir une plus grande sécurité, modifiez le nom du réseau et le mot de passe.**



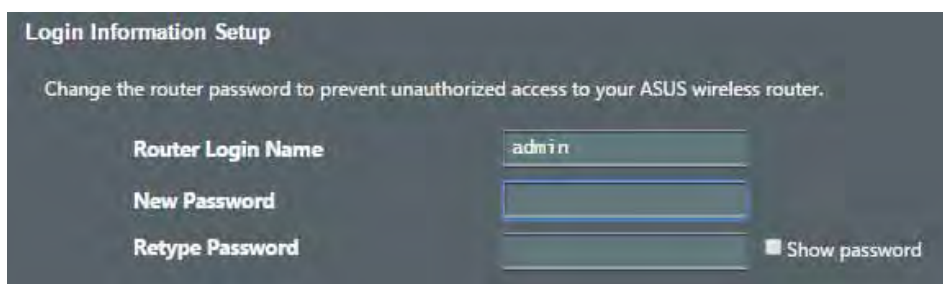
| | |
|---------------------------------------|------------|
| Nom du réseau Wi-Fi de 2,4 G (SSID) : | ASUS_XX_2G |
| Nom du réseau Wi-Fi de 5 G (SSID) : | ASUS_XX_5G |

- * **XX** correspond aux deux derniers chiffres de l'adresse MAC 2,4 GHz. Vous pouvez les trouver sur l'étiquette située à l'arrière de votre routeur.

3. **Vous pouvez choisir de configurer votre routeur à l'aide de l'interface de gestion ou de l'application ASUS Router.**

a. **Configuration via l'interface de gestion**

- **Une fois connecté, l'interface de gestion du routeur s'affiche automatiquement lors de l'ouverture de votre navigateur internet. Si ce n'est pas le cas, entrez <http://router.asus.com> dans la barre d'adresse..**
- **Définissez un mot de passe afin d'éviter les accès non autorisés au routeur.**



b. Configuration via l'application

Téléchargez l'application ASUS Router pour configurer votre routeur par le biais de vos appareils mobiles.

- **Activez le Wi-Fi sur vos appareils mobiles et connectez-vous au réseau du routeur.**
- **Suivez les instructions de configuration de l'application ASUS Router pour effectuer la configuration.**



ASUS Router



Se rappeler des paramètres de votre routeur Wi-Fi

- **Notez les paramètres Wi-Fi choisis lors de la configuration de votre routeur.**

| | |
|-----------------------------------|----------------|
| Nom du routeur : | Mot de passe : |
| Nom du réseau de 2,4 GHz (SSID) : | Mot de passe : |
| Nom du réseau de 5 GHz (SSID) : | Mot de passe : |

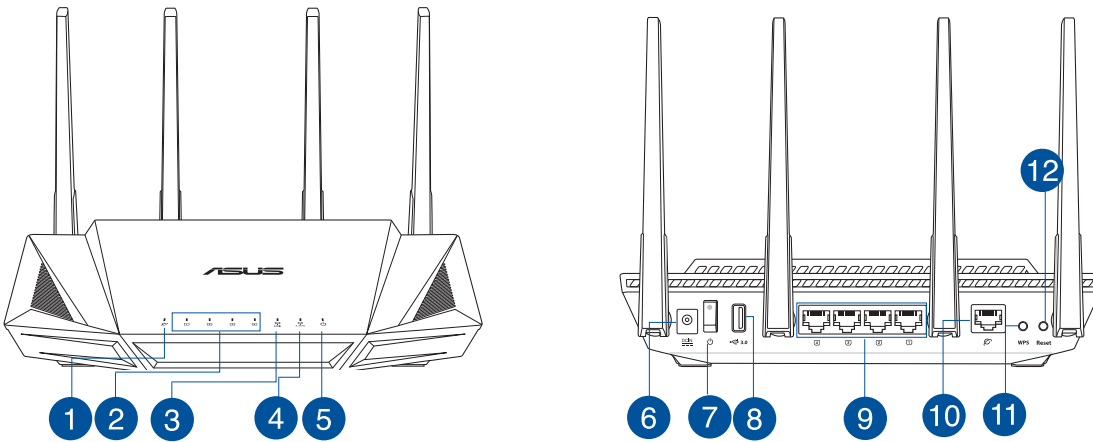
FAQ

1. Où puis-je obtenir plus d'informations sur le routeur Wi-Fi ?
 - Site de la FAQ en ligne : <https://www.asus.com/support/faq>
 - Site de support technique : <https://www.asus.com/support>
 - Service clientèle : consultez la liste des centres d'appel ASUS en fin de guide
 - Vous pouvez consulter le manuel de l'utilisateur en ligne à l'adresse suivante : <https://www.asus.com/support>

Isi kemasan

- ☑ Router Nirkabel RT-AX58U
- ☑ Kabel jaringan (RJ-45)
- ☑ Adaptor AC
- ☑ Panduan Ringkas

Tampilan RT-AX58U

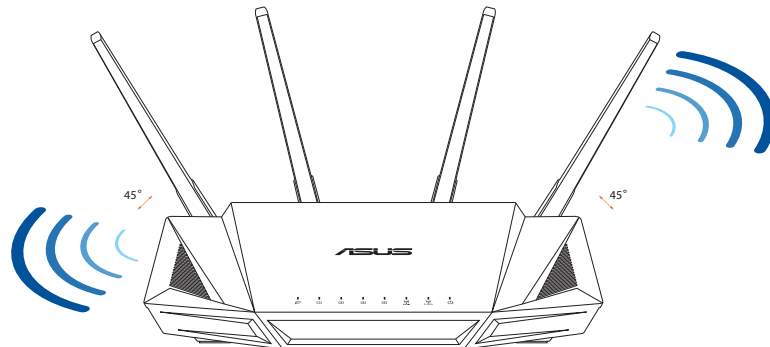


| | |
|----------------------|------------------------|
| 1 LED WAN (Internet) | 7 Saklar daya |
| 2 LEDs LAN 1~4 | 8 Port USB 3.0 |
| 3 LED 5GHz | 9 Port LAN 1~4 |
| 4 LED 2,4GHz | 10 Port WAN (Internet) |
| 5 LED Daya | 11 Tombol WPS |
| 6 Port daya (DC-IN) | 12 Tombol atur ulang |

Mengatur posisi router nirkabel Anda.

Untuk transmisi sinyal nirkabel terbaik antara router nirkabel dan perangkat jaringan yang tersambung, pastikan Anda:

- Menempatkan router nirkabel di area tengah agar jangkauan nirkabel maksimum untuk perangkat jaringan.
- Tidak menghalangi perangkat dengan benda logam dan menjauhkan dari sinar matahari langsung.
- Menjauhkan perangkat dari perangkat Wi-Fi 802.11g atau hanya 20 MHz, periferal komputer 2,4 GHz, perangkat Bluetooth, telepon nirkabel, trafo, mesin berat, cahaya neon, oven microwave, lemari es, dan peralatan industri lainnya untuk mencegah interferensi atau hilangnya sinyal.
- Selalu memperbarui ke firmware terkini. Untuk mendapatkan pembaruan firmware terkini, kunjungi situs Web ASUS <http://www.asus.com>.
- Untuk memastikan sinyal nirkabel terbaik, arahkan empat antena yang tidak dapat dilepas seperti yang ditunjukkan gambar di bawah.



CATATAN:

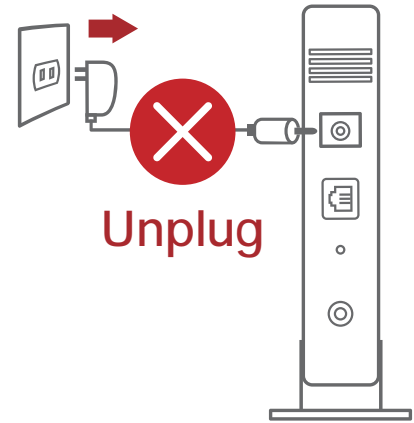
- Gunakan hanya adaptor yang diberikan dalam paket. Menggunakan adaptor lain dapat merusak perangkat.
- **Spesifikasi:**

| | | | |
|---------------------------------|---|-------------|--------|
| Adaptor daya DC | Output DC: +19 V dengan arus maks. 1,75 A | | |
| Suhu Pengoperasian | 0~40°C | Penyimpanan | 0~70°C |
| Kelembaban Pengoperasian | 50~90% | Penyimpanan | 20~90% |

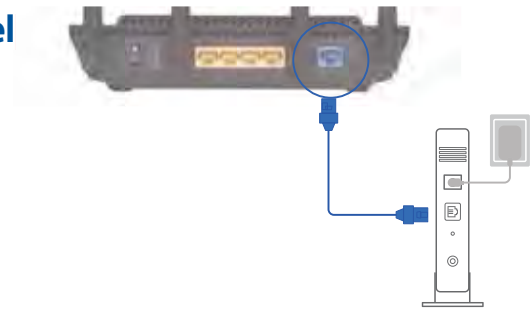
Menyiapkan modem

1. Lepaskan modem DSL/kabel dari catu daya. Jika ada cadangan baterai, keluarkan baterai.

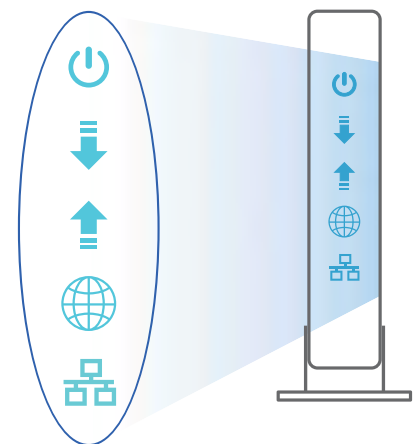
CATATAN: Jika menggunakan DSL untuk Internet, Anda memerlukan nama pengguna/sandi dari Penyedia Layanan Internet (ISP) untuk mengkonfigurasi router dengan benar.



2. Sambungkan modem ke router dengan kabel jaringan yang tersedia.



3. Hidupkan modem kabel/DSL.
4. Periksa lampu LED modem kabel/DSL untuk memastikan sambungan sudah aktif.

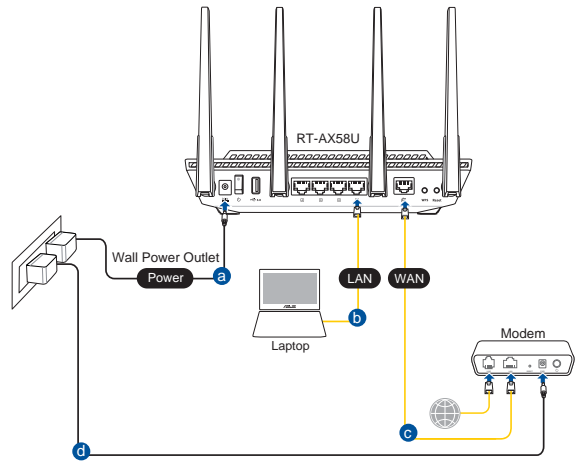


Mengkonfigurasi RT-AX58U

Anda dapat mengkonfigurasi router melalui sambungan berkabel atau nirkabel.

A. Sambungan berkabel:

1. Sambungkan router ke stopkontak dan hidupkan. Sambungkan kabel jaringan dari komputer ke port LAN pada router.



2. GUI web akan secara otomatis dijalankan saat Anda membuka browser web. Jika tidak secara otomatis dijalankan, buka <http://router.asus.com>.
3. Konfigurasikan sandi router untuk mencegah akses yang tidak sah.

Login Information Setup

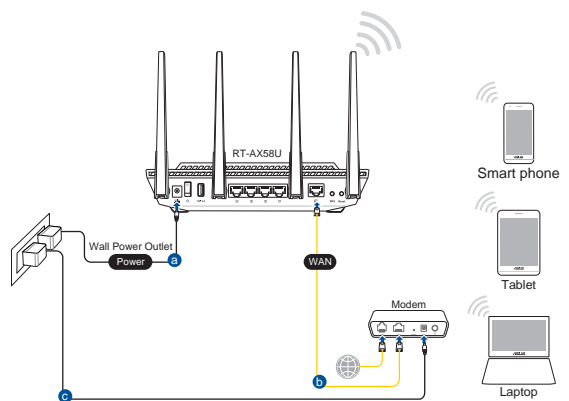
Change the router password to prevent unauthorized access to your ASUS wireless router.

| | |
|-------------------|-------|
| Router Login Name | admin |
| New Password | |
| Retype Password | |

Show password

B. Sambungan Nirkabel

1. Sambungkan router ke stopkontak dan hidupkan.



2. **Sambungkan ke nama jaringan (SSID) yang tertera pada label produk, di bagian belakang router. Untuk keamanan jaringan yang lebih baik, ubah menjadi SSID unik, lalu tetapkan sandi.**



| | |
|--------------------------|------------|
| Nama Wi-Fi 2,4 G (SSID): | ASUS_XX_2G |
|--------------------------|------------|

| | |
|------------------------|------------|
| Nama Wi-Fi 5 G (SSID): | ASUS_XX_5G |
|------------------------|------------|

- * **XX** mengacu ke 2 angka terakhir pada alamat MAC 2,4 GHz. Anda dapat menemukannya pada label di bagian belakang RT-AX58U.

3. **Anda dapat memilih aplikasi GUI web atau ASUS Router untuk mengatur router.**

a. **Konfigurasi GUI Web**

- **GUI web akan secara otomatis dijalankan saat Anda membuka browser web. Jika tidak secara otomatis dijalankan, buka <http://router.asus.com>.**
- **Konfigurasikan sandi router untuk mencegah akses yang tidak sah.**

b. Konfigurasi Aplikasi

Untuk mengkonfigurasi router melalui perangkat bergerak, download Aplikasi ASUS Router.



ASUS
Router



- **Aktifkan Wi-Fi di perangkat bergerak, lalu sambungkan ke jaringan RT-AX58U.**
- **Ikuti petunjuk pada Aplikasi ASUS Router untuk menyelesaikan konfigurasi.**

Q | ASUS Router

Menyimpan pengaturan router nirkabel

- **Ingat pengaturan nirkabel setelah Anda menyelesaikan konfigurasi router.**

| | |
|------------------------|--------|
| Nama Router: | Sandi: |
| SSID jaringan 2,4 GHz: | Sandi: |
| SSID jaringan 5 GHz: | Sandi: |

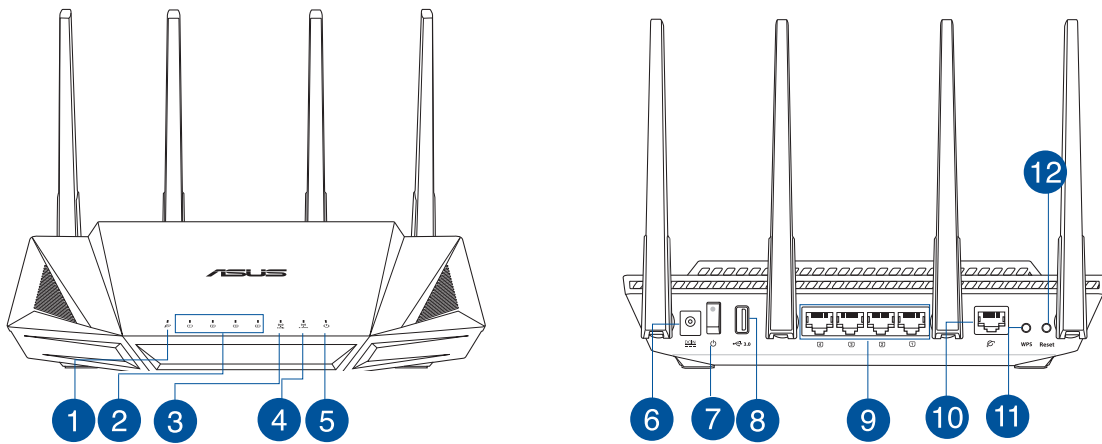
Tanya Jawab

1. Di mana saya dapat memperoleh informasi lengkap tentang router nirkabel?
 - Situs tanya jawab online: <https://www.asus.com/support/faq>
 - Situs Dukungan Teknis: <https://www.asus.com/support>
 - Hotline Pelanggan: Lihat Hotline Dukungan dalam Panduan Tambahan
 - Anda dapat memperoleh panduan pengguna secara online di <https://www.asus.com/support>

Kandungan pembungkusan

- ☑ Penghala wayarles RT-AX58U
- ☑ Kabel rangkaian (RJ-45)
- ☑ Penyesuai AU
- ☑ Panduan Mula Ringkas

Melihat sepintas Lalu RT-AX58U anda

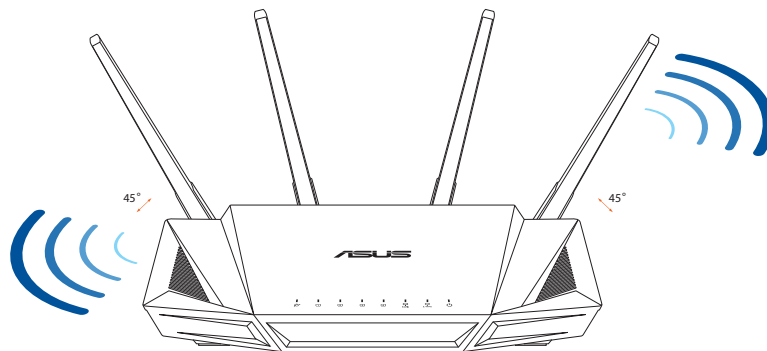


| | |
|---------------------------------|---------------------------|
| 1 WAN (Internet) LED | 7 Suis kuasa |
| 2 LAN 1~4 LEDs | 8 Port USB 3.0 |
| 3 LED 5GHz | 9 Port LAN 1~4 |
| 4 LED 2.4GHz | 10 Port WAN (Internet) |
| 5 LED Kuasa | 11 Butang WPS |
| 6 Port kuasa (DC-In) (AT-Masuk) | 12 Butang tetapkan semula |

Meletakkan penghala wayarles anda

Untuk penghantaran wayarles optimum antara penghala wayarles dan peranti wayarles yang bersambung, pastikan anda:

- Letakkan penghala wayarles dalam kawasan terpusat untuk liputan wayarles maksimum untuk peranti rangkaian.
- Pastikan penghala wayarles jauh daripada penghalang logam dan jauh daripada cahaya matahari langsung.
- Pastikan penghala wayarles jauh daripada peranti Wi-Fi 802.11g atau 20MHz sahaja, 2.4GHZ persisian komputer, peranti Bluetooth, telefon kordles, pengubah, motor tugas berat, lampu kalimantang, ketuhar gelombang mikro, peti sejuk, dan peralatan industri lain untuk mengelakkan gangguan atau kehilangan isyarat.
- Sentiasa kemas kini persisian tegar terkini. Lawati tapak web ASUS di <http://www.asus.com> untuk mendapatkan kemas kini persisian tegar terkini.
- Untuk memastikan isyarat wayarles terbaik, sesuaikan 4 antena tidak boleh tanggal seperti yang ditunjukkan dalam rajah di bawah.



NOTA:

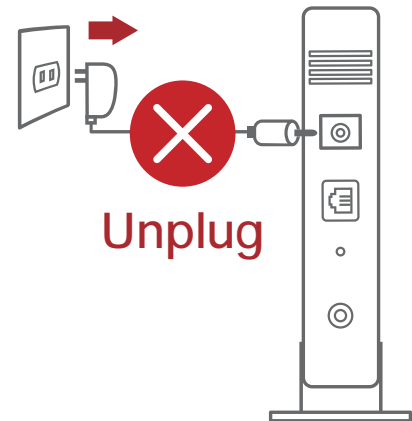
- Hanya guna adapter yang disertakan bersama pakej anda. Menggunakan adapter lain boleh merosakkan peranti.
- **Spesifikasi:**

| | | | |
|---------------------------|--|-------------|--------|
| Adapter Kuasa DC | Output DC: +19V dengan arus maksimum 1.75A | | |
| Suhu Pengendalian | 0~40°C | Penyimpanan | 0~70°C |
| Kelembapan Operasi | 50~90% | Penyimpanan | 20~90% |

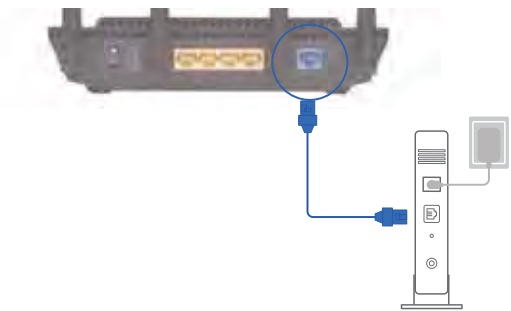
Menyediakan modem anda

1. Cabut palam kabel kuasa/modem DSL. Jika ia mempunyai sandaran bateri, keluarkan bateri.

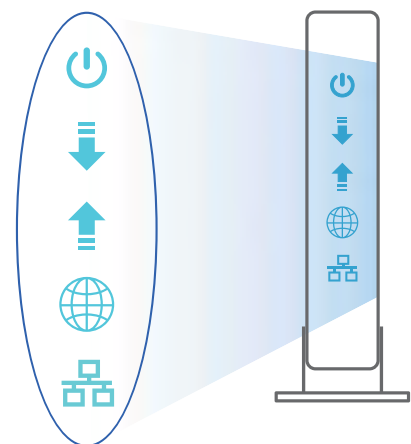
NOTA: Jika anda menggunakan DSL untuk Internet, anda akan memerlukan nama pengguna/kata laluan anda daripada Pembekal Perkhidmatan Internet (ISP) anda untuk mengkonfigurasi penghala dengan betul.



2. Sambung modem anda ke penghala dengan kabel rangkaian yang digabungkan.



3. Hidupkan kuasa kabel/modem DSL anda.
4. Semak kabel/lampu LED modem DSL anda untuk memastikan sambungan adalah aktif.

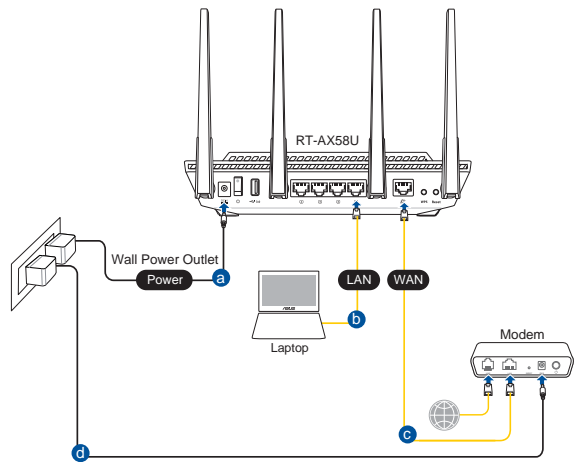


Menyediakan RT-AX58U anda

Anda boleh menyediakan penghala anda melalui sambungan berwayar atau wayarles.

A. Sambungan berwayar

1. Pasang masuk penghala anda ke sumber kuasa dan hidupkan kuasanya. Sambungkan kabel rangkaian dari komputer anda ke port LAN pada penghala anda.
2. GUI web dilancarkan secara automatik apabila anda membuka pelayar web. Jika ia tidak melakukan pelancaran auto, masuki <http://router.asus.com>.
3. Sediakan kata laluan untuk penghala anda bagi menghalang akses yang tidak dibenarkan.



Login Information Setup

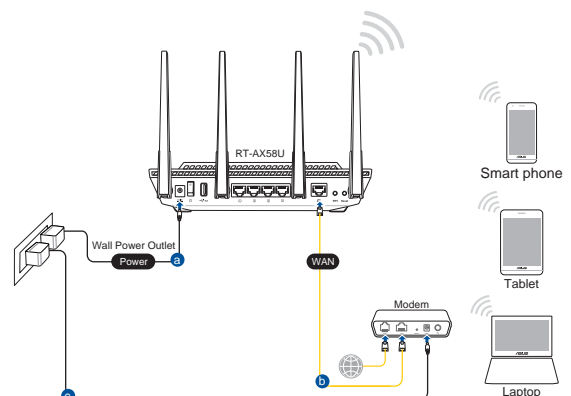
Change the router password to prevent unauthorized access to your ASUS wireless router.

| | |
|-------------------|-------|
| Router Login Name | admin |
| New Password | |
| Retype Password | |

Show password

B. Sambungan wayarles

1. Pasang masuk penghala anda ke sumber kuasa dan hidupkan kuasanya.



2. Sambung ke nama rangkaian (SSID) yang ditunjukkan pada label produk di bahagian belakang penghala. Untuk keselamatan rangkaian yang lebih baik, ubah ke SSID unik dan berikan kata laluan.



Nama Wi-Fi 2.4G (SSID): ASUS_XX_2G

Nama Wi-Fi 5G (SSID): ASUS_XX_5G

- * **XX** merujuk pada dua digit terakhir alamat MAC 2.4GHz. Anda boleh menemuinya pada label di belakang penghala anda.

3. Anda boleh memilih sama ada GUI web atau aplikasi Penghala ASUS untuk menyediakan penghala anda.

a. Penyediaan GUI Web

- GUI web dilancarkan secara automatik apabila anda membuka pelayar web. Jika ia tidak melakukan pelancaran auto, masuki <http://router.asus.com>.
- Sediakan kata laluan untuk penghala anda bagi menghalang akses yang tidak dibenarkan.

b. Penyediaan Aplikasi

Muat turun Aplikasi Penghala ASUS untuk menyediakan penghala anda melalui peranti mudah alih anda.



ASUS
Router



- Hidupkan Wi-Fi pada peranti mudah alih anda dan sambung ke rangkaian RT-AX58U anda.
- Ikuti arahan penyediaan Aplikasi Penghala ASUS untuk melengkapkan penyediaan.



Mengingati tetapan penghala wayarles anda

- Ingat tetapan wayarles anda apabila anda melengkapkan penyediaan penghala.

| | |
|------------------------|--------------|
| Nama Penghala: | Kata Laluan: |
| SSID rangkaian 2.4GHz: | Kata Laluan: |
| SSID rangkaian 5GHz | Kata Laluan: |

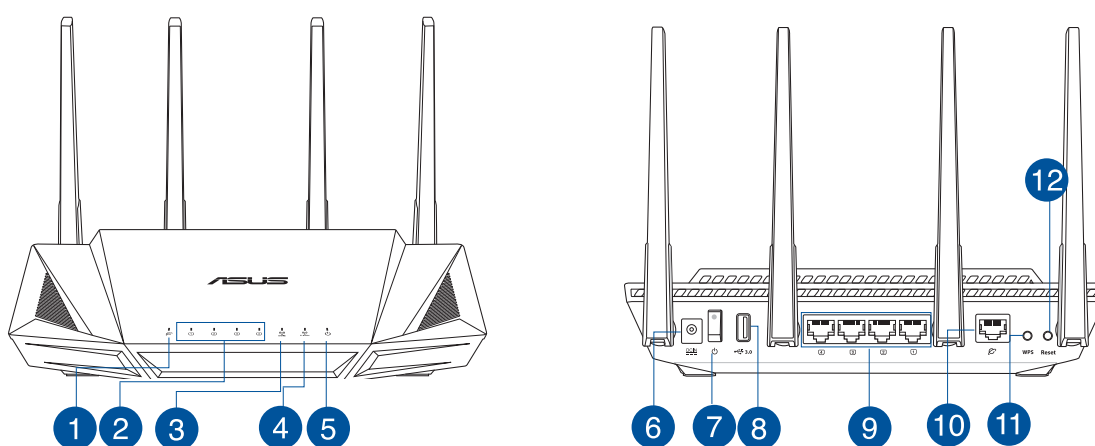
Soalan Lazim (FAQ)

1. Di manakah saya boleh mendapatkan maklumat lanjut mengenai penghala tanpa wayar?
 - Tapak FAQ dalam talian: <https://www.asus.com/support/faq>
 - Tapak Sokongan Teknikal: <https://www.asus.com/support>
 - Hotline Pelanggan: Rujuk Hotline Sokongan dalam Panduan Mula Pantas ini
 - Anda boleh mendapatkan manual pengguna dalam talian di <https://www.asus.com/support>

Conteúdo da embalagem

- ☑ RT-AX58U
- ☑ Cabo de rede (RJ-45)
- ☑ Transformador
- ☑ Guia de consulta rápida

Visão geral do seu RT-AX58U

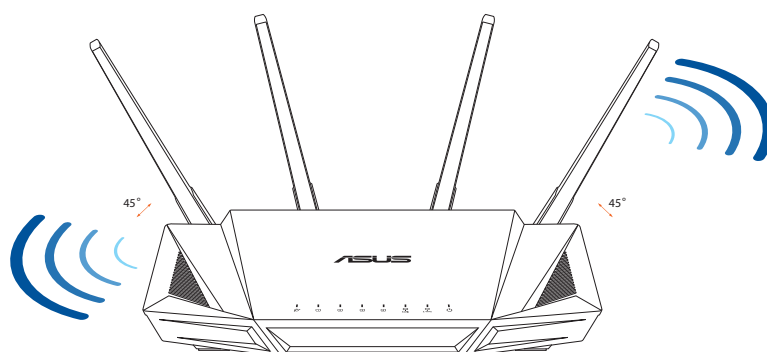


| | |
|-------------------------------------|--------------------------|
| 1 LED WAN (Internet) | 7 Botão Alimentação |
| 2 LED 1 a 4 da LAN | 8 Portas USB 3.0 |
| 3 LED 5GHz | 9 LED 1 a 4 da LAN |
| 4 LED 2,4GHz | 10 Portas WAN (Internet) |
| 5 LED de Alimentação | 11 Botão WPS |
| 6 Porta de alimentação (Entrada DC) | 12 Vypínaè |

Colocação do router

Para garantir a melhor qualidade de transmissão entre o router sem fios e os dispositivos de rede a ele ligados:

- Coloque o router sem fios numa área central para obter a maior cobertura possível sem fios para os seus dispositivos de rede.
- Mantenha o dispositivo afastado de obstruções de metal e de luz solar directa.
- Mantenha o dispositivo afastado de dispositivos Wi-Fi que utilizam apenas a norma 802.11g ou 20MHz, periféricos de computador que utilizam a banda 2,4GHz, dispositivos Bluetooth, telefones sem fios, transformadores, motores de alta resistência, lâmpadas fluorescentes, fornos microondas, frigoríficos e outros equipamentos industriais para evitar interferências ou perdas de sinal.
- Actualize sempre para o firmware mais recente. Visite o Web site da ASUS em <http://www.asus.com> para obter as actualizações de firmware mais recentes.
- Para garantir um sinal sem fios ideal, oriente as quatro antenas não amovível tal como ilustrado nas imagens abaixo.



NOTAS:

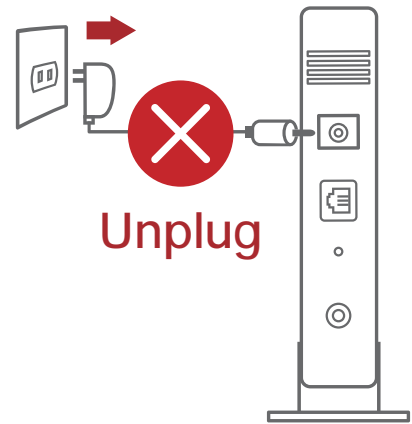
- Utilize apenas o transformador fornecido com o produto. A utilização de outro transformador poderá danificar o dispositivo.
- **Especificações:**

| | | | |
|-------------------------------------|--|---------------|--------|
| Transformador DC | Saída DC: +19V com corrente máx. de 1,75A; | | |
| Temperatura de funcionamento | 0~40°C | Armazenamento | 0~70°C |
| Humidade em funcionamento | 50~90% | Storage | 20~90% |

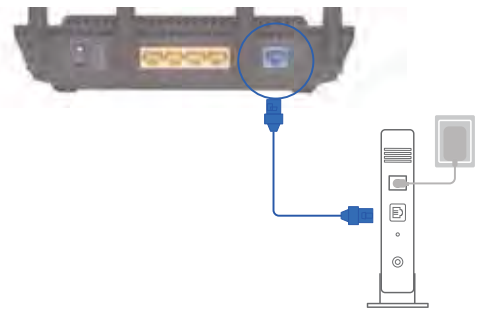
Preparar o modem

1. **Desligue o modem por cabo/DSL. Se o mesmo tiver uma bateria de reserva, remova-a.**

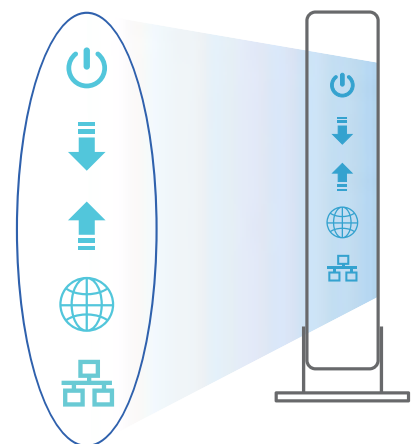
NOTA: Se estiver a utilizar uma ligação DSL para aceder à Internet, precisará dos dados de nome de utilizador/palavra-passe fornecidos pelo seu fornecedor de serviços de Internet (ISP) para configurar corretamente o seu router.



2. **Ligue o seu modem ao router com o cabo de rede fornecido.**



3. **Ligue o seu modem por cabo/DSL.**
4. **Verifique as luzes LED do modem por cabo/DSL para se certificar que a ligação está ativa.**

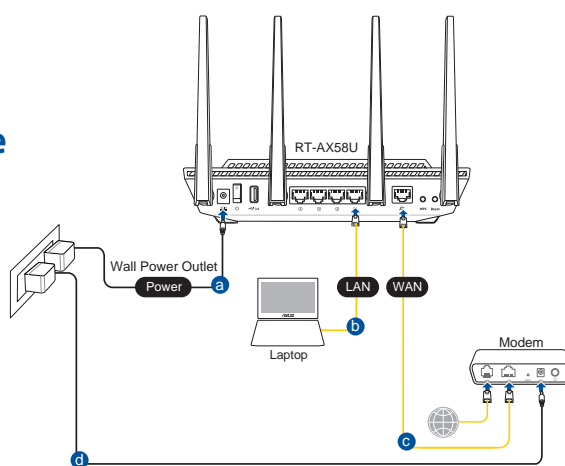


Configurar o RT-AX58U

É possível configurar o RT-AX58U através de uma ligação com ou sem fios.

A. Ligação com fios

1. Ligue o router a uma tomada elétrica e prima o botão de energia. Ligue o cabo de rede do computador a uma porta LAN do router.



2. A interface web abre automaticamente quando abrir um navegador web. Se não abrir automaticamente, introduza <http://router.asus.com>.
3. Configure uma palavra-passe para o seu router para impedir o acesso não autorizado.

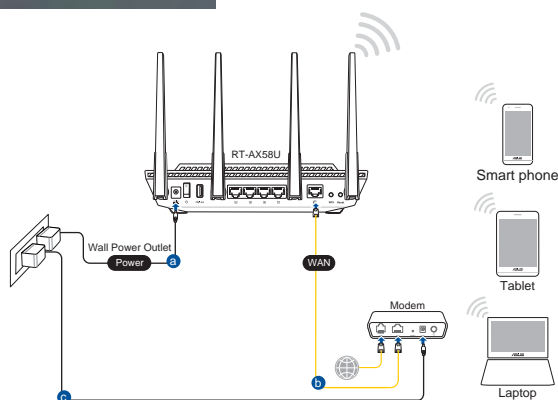
Login Information Setup

Change the router password to prevent unauthorized access to your ASUS wireless router.

| | |
|-------------------|---|
| Router Login Name | <input type="text" value="admin"/> |
| New Password | <input type="password"/> |
| Retype Password | <input type="password"/> <input type="checkbox"/> Show password |

B. Ligação sem fios

1. Ligue o router a uma tomada elétrica e prima o botão de energia.



2. Ligue ao nome de rede (SSID) indicado na etiqueta do produto colada na traseira do router. Para uma maior segurança de rede, mude para um SSID exclusivo e defina uma palavra-passe.



Nome da rede Wi-Fi 2,4G (SSID): ASUS_XX_2G

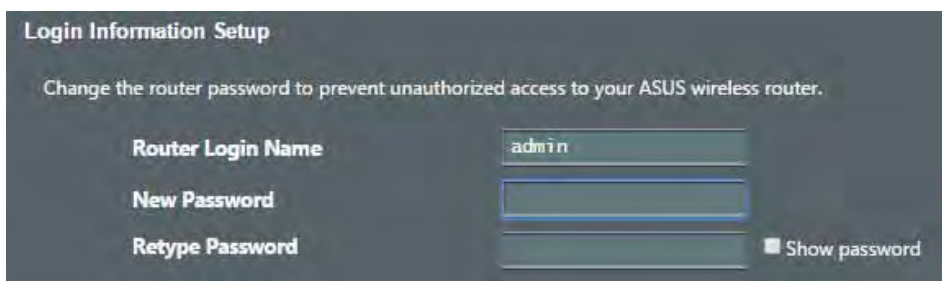
Nome da rede Wi-Fi 5G (SSID): ASUS_XX_5G

- * **XX** refere-se aos dois últimos dígitos do endereço MAC 2,4GHz. Pode encontrar esse endereço na etiqueta na traseira do RT-AX58U.

3. Pode escolher a interface Web ou a aplicação ASUS Router para configurar o seu router.

a. Configuração com a interface Web

- Após a ligação, a interface web irá abrir automaticamente quando abrir um navegador web. Se não abrir automaticamente, introduza <http://router.asus.com>.
- Configure uma palavra-passe para o seu router para impedir o acesso não autorizado.



b. Configuração com a aplicação

Transfira a aplicação ASUS Router para configurar o seu router através de dispositivos móveis.



ASUS
Router



- **Ative a rede Wi-Fi nos seus dispositivos móveis e ligue à rede do RT-AX58U.**
- **Siga as instruções de configuração da aplicação ASUS Router para concluir a configuração.**



Memorizar as definições do seu router sem fios

- **Memorize as suas definições de ligação sem fios quando terminar a configuração do router.**

| | |
|-----------------------|----------------|
| Nome do router: | palavra-passe: |
| SSID da rede 2,4 GHz: | palavra-passe: |
| SSID da rede 5GHz: | palavra-passe: |

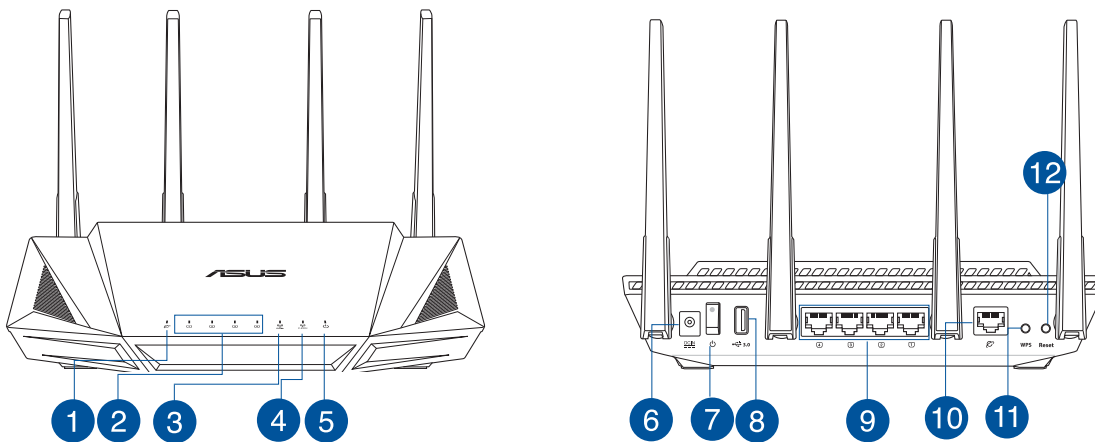
Perguntas Frequentes

1. Onde posso encontrar mais informações acerca do router sem fios?
 - Site de Perguntas Frequentes Online: <https://www.asus.com/support/faq>
 - Site de Apoio Técnico: <https://www.asus.com/support>
 - Linha de Apoio ao Cliente: Consulte a Linha de Apoio ao Cliente no Guia suplementar
 - Pode obter o manual online em <https://www.asus.com/support>

Contenido del paquete

- ☑ RT-AX58U
- ☑ Cable de red
- ☑ AC adapter
- ☑ Guía de inicio rápido

Un vistazo rápido a su RT-AX58U

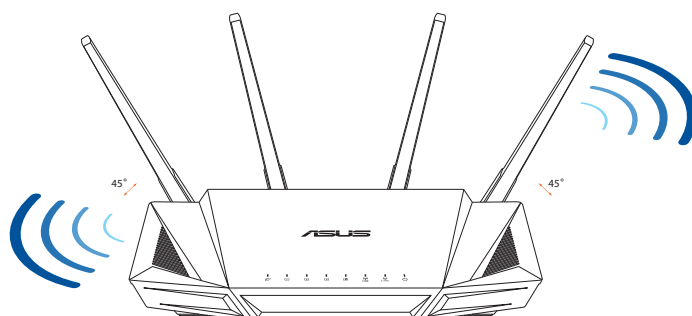


| | |
|----------------------------------|---------------------------|
| 1 WAN (Internet) LED | 7 Vypínaè |
| 2 LED LAN 1~4 | 8 USB 3.0 puertos |
| 3 LED de 5 GHz | 9 LAN 1~4 puertos |
| 4 LED de 2,4 GHz | 10 WAN (Internet) puertos |
| 5 LED de alimentación | 11 Botón WPS |
| 6 Puerto de alimentación (DC-IN) | 12 Botón Restablecer |

Ubicar el router inalámbrico

Para conseguir la mejor transmisión de señal inalámbrica entre el router inalámbrico y los dispositivos de red conectados a él, asegúrese de:

- Colocar el router inalámbrico en un área centralizada para conseguir la máxima cobertura inalámbrica para los dispositivos de red.
- Mantenga el dispositivo alejado de obstáculos metálicos y de la luz solar directa.
- Mantenga el producto alejado de dispositivos WiFi de 802.11g o 20 MHz, equipos periféricos de 2,4 GHz, dispositivos Bluetooth, teléfonos inalámbricos, transformadores, motores de alto rendimiento, luces fluorescentes, hornos microondas, frigoríficos y otros equipos industriales para evitar interferencias o pérdidas de señal.
- Actualícese siempre a la versión de firmware más reciente. Visite el sitio Web de ASUS en <http://www.asus.com> para obtener las actualizaciones de firmware más recientes.
- Oriente las cuatro antenas no desmontables tal y como muestra la siguiente ilustración para maximizar la cobertura de la señal inalámbrica.



NOTAS:

- Utilice únicamente el cargador incluido con el paquete. Si usa otros adaptadores, el dispositivo puede resultar dañado.

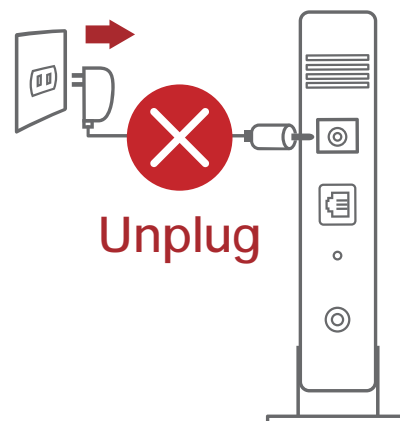
- **Especificaciones:**

| | | | |
|--|--|----------------|--------|
| Adaptador de alimentación de CC | Salida de CC: +19 V con una corriente máxima de 1,75 A | | |
| Temperatura de funcionamiento | 0~40°C | Almacenamiento | 0~70°C |
| Humedad de funcionamiento | 50~90% | Almacenamiento | 20~90% |

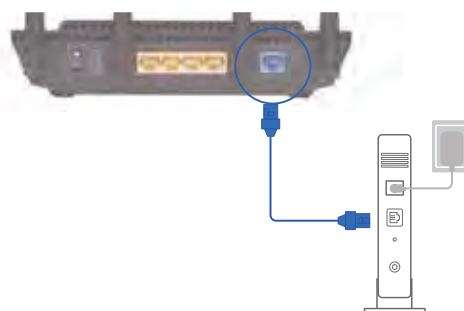
Preparar el módem

1. **Desenchufe la alimentación del módem de cable o DSL. Si tiene una batería de reserva, quítela.**

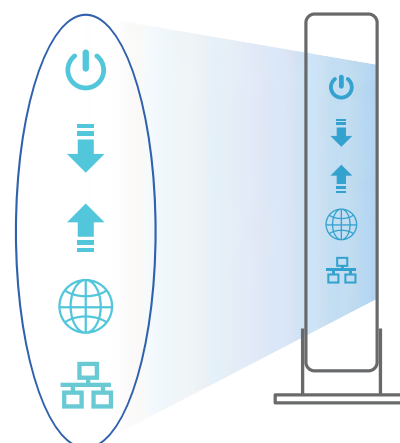
NOTA: Si utiliza DSL para Internet, necesitará el nombre de usuario y la contraseña de su proveedor de servicio de Internet (ISP) para configurar adecuadamente el router.



2. **Conecte el módem al router con el cable de red proporcionado.**



3. **Encienda su módem de cable o DSL.**
4. **Compruebe las luces de los LED del módem de cable o DLS para asegurarse de que la conexión está activa.**

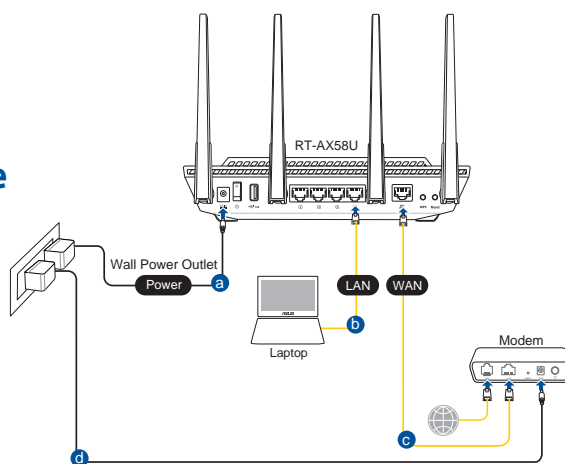


Configurar el RT-AX58U

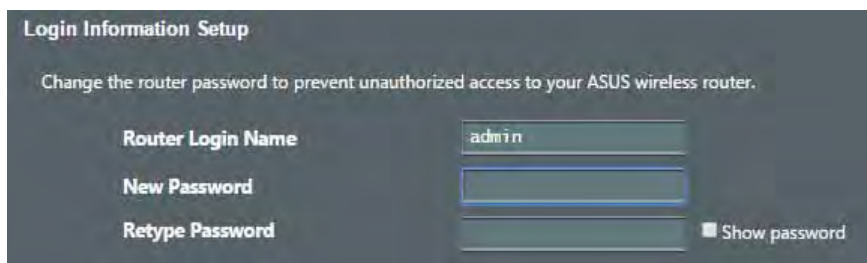
Puede configurar el RT-AX58U a través de la conexión cableada o inalámbrica.

A. Conexión cableada

1. Enchufe el router a una toma de corriente eléctrica y enciéndalo. Conecte el cable de red desde el equipo a un puerto LAN del router.

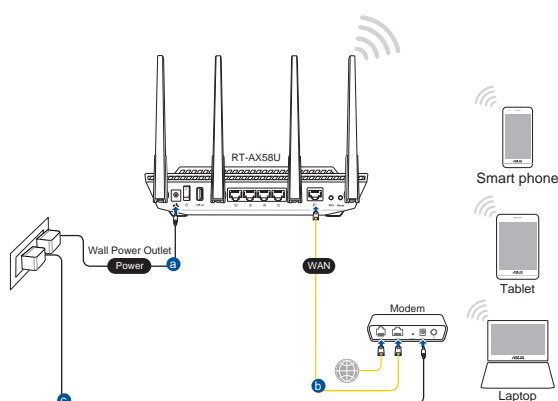


2. La GUI Web se inicia automáticamente cuando abre un explorador Web. Si no se inicia automáticamente, escriba <http://router.asus.com>.
3. Configure una contraseña para el router para evitar el acceso no autorizado.



B. Conexión inalámbrica

1. Enchufe el router a una toma de corriente eléctrica y enciéndalo.



2. Conéctese al nombre de red (SSID) mostrado en la etiqueta del producto que se encuentra en la parte posterior del router. Para mejorar la seguridad de la red, cambie a un SSID único y asigne una contraseña.



| | |
|------------------------------|------------|
| Nombre Wi-Fi 2,4 GHz (SSID): | ASUS_XX_2G |
|------------------------------|------------|

| | |
|---------------------------|------------|
| Nombre Wi-Fi 5GHz (SSID): | ASUS_XX_5G |
|---------------------------|------------|

- * **XX** y hace referencia a los dos últimos dígitos de la dirección MAC de 2,4 GHz. Puede encontrarlo en la etiqueta situada en la parte posterior del RT-AX58U.

3. Para configurar su router puede elegir tanto la GUI web como la aplicación ASUS Router.

a. Configuración mediante GUI web

- La GUI Web se inicia automáticamente cuando abre un explorador Web. Si no se inicia automáticamente, escriba <http://router.asus.com>.
- Configure una contraseña para el router para evitar el acceso no autorizado.

Login Information Setup

Change the router password to prevent unauthorized access to your ASUS wireless router.

| | |
|-------------------|---|
| Router Login Name | <input type="text" value="admin"/> |
| New Password | <input type="password"/> |
| Retype Password | <input type="password"/> <input type="checkbox"/> Show password |

b. Configuración mediante la app

Descargue la aplicación ASUS Router para configurar su router a través de su dispositivo móvil.



ASUS Router



- Encienda la wifi en su dispositivo móvil y conéctelo a su red de Blue Cave.
- Siga las instrucciones de configuración de la aplicación ASUS Router para completar la configuración.



Recordar la configuración del router inalámbrico

- Recuerde la configuración inalámbrica cuando complete la configuración del router.

| | |
|-------------------------|-------------|
| Nombre del router: | Contraseña: |
| SSID de red de 2,4 GHz: | Contraseña: |
| SSID de red de 5 GHz : | Contraseña: |

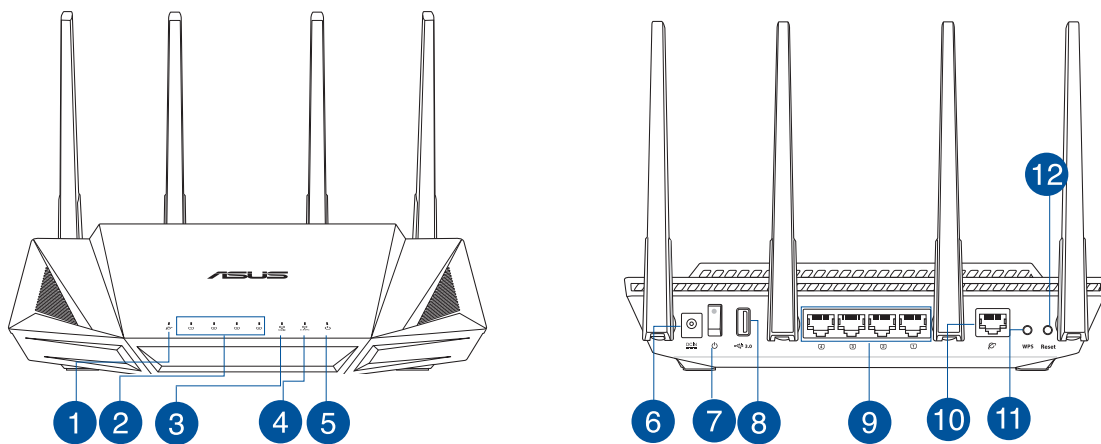
Preguntas más frecuentes (P+F)

1. ¿De qué otros recursos dispongo para obtener más información acerca del router inalámbrico?
 - El sitio web de preguntas más frecuentes: <https://www.asus.com/support/faq>
 - El sitio web de soporte técnico: <https://www.asus.com/support>
 - Línea Directa: Consulte el número de la línea telefónica de soporte técnico en esta Guía de inicio rápido.
 - Puede obtener el manual de usuario en línea en <https://www.asus.com/support>

สิ่งต่างๆ ในกล่องบรรจุ

- ☑ RT-AX58U ไร้สาย เราเตอร์
- ☑ สายเคเบิลเครือข่าย (RJ-45)
- ☑ อะแดปเตอร์ AC
- ☑ คู่มือเริ่มต้นฉบับย่อ

ดูที่ RT-AX58U ของคุณอย่างรวดเร็ว

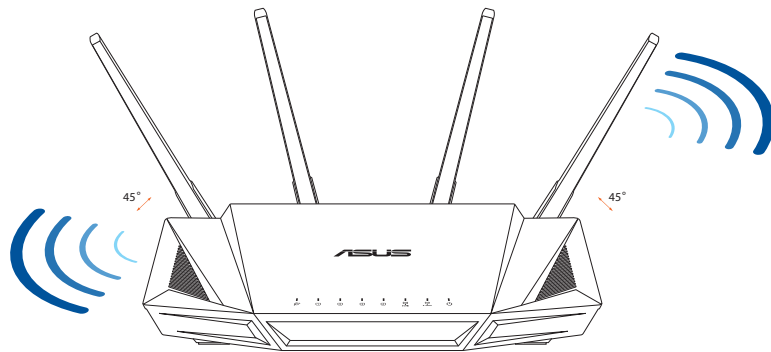


| | |
|---------------------------|-----------------------------|
| 1 LED WAN (อินเทอร์เน็ต) | 7 สวิตช์ไฟ |
| 2 LEDs LAN 1~4 | 8 พอร์ต USB 3.0 |
| 3 LED 5GHz | 9 พอร์ต LAN 1~4 |
| 4 LED 2.4GHz | 10 พอร์ต WAN (อินเทอร์เน็ต) |
| 5 LED เพาเวอร์ | 11 ปุ่ม WPS |
| 6 พอร์ตเพาเวอร์ (DC-เข้า) | 12 ปุ่มรีเซ็ต |

การวางตำแหน่งไวร์เลส เราเตอร์ของคุณ

เพื่อให้การรับส่งสัญญาณไร้สายระหว่างไวร์เลสเราเตอร์ และอุปกรณ์เครือข่ายที่เชื่อมต่ออยู่มีคุณภาพดีที่สุด ให้แน่ใจว่าคุณ:

- วางไวร์เลสเราเตอร์ในบริเวณศูนย์กลาง เพื่อให้ครอบคลุมพื้นที่ไร้สายมากที่สุดสำหรับอุปกรณ์เครือข่าย
- วางอุปกรณ์ให้ห่างจากวัตถุขวางกั้นที่เป็นโลหะ และไม่ให้ถูกแสงแดดโดยตรง
- วางอุปกรณ์ให้ห่างจากอุปกรณ์ Wi-Fi 802.11g หรือ 20MHz, อุปกรณ์ต่อพ่วงคอมพิวเตอร์ 2.4GHz, อุปกรณ์บลูทูธ, โทรศัพท์ไร้สาย, หมอแปลง, หมอเตอรพลังงานสูง, แสงฟลูออเรสเซนต์, เตาไมโครเวฟ, ตู้เย็น และอุปกรณ์อุตสาหกรรมอื่นๆ เพื่อป้องกันสัญญาณรบกวน หรือสัญญาณสูญหาย
- อัปเดตไปเป็นเฟิร์มแวร์ล่าสุดเสมอ เยี่ยมชมเว็บไซต์ ASUS ที่ <http://www.asus.com> เพื่อรับอัปเดตเฟิร์มแวร์ล่าสุด
- เพื่อให้มั่นใจถึงสัญญาณไร้สายที่ดีที่สุด ให้ปรับทิศทางเสาอากาศที่สามารถถอดได้ 4 อัน ในลักษณะที่แสดงในภาพด้านล่าง



หมายเหตุ

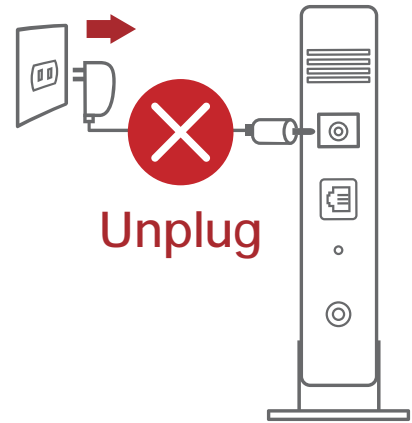
- ใช้เฉพาะอะแดปเตอร์ที่มาพร้อมกับแพ็คเกจของคุณเท่านั้น การใช้อะแดปเตอร์อื่นอาจทำให้อุปกรณ์เสียหาย
- ข้อมูลจำเพาะ:

| | | | |
|-----------------------|--|--------------|--------|
| อะแดปเตอร์เพาเวอร์ DC | เอาต์พุต DC: +19V โดยมีกระแสสูงสุด 1.75A | | |
| อุณหภูมิขณะทำงาน | 0~40°C | ขณะเก็บรักษา | 0~70°C |
| ความชื้นขณะทำงาน | 50~90% | ขณะเก็บรักษา | 20~90% |

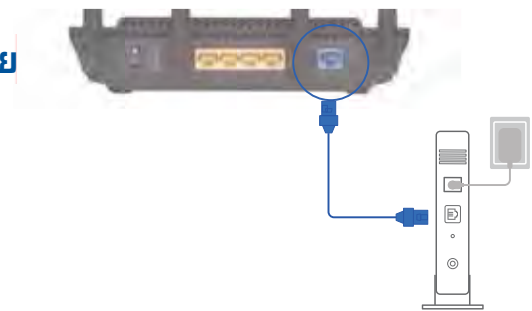
การเตรียมโมเด็มของคุณ

1. ถอดสายไฟ/โมเด็ม DSL หากมีแบตเตอรี่สำรอง ให้ถอดแบตเตอรี่ออก

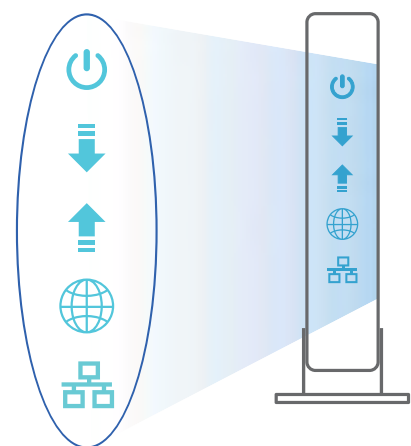
หมายเหตุ: หากคุณใช้ DSL สำหรับอินเทอร์เน็ต คุณต้องมีชื่อผู้ใช้/รหัสผ่านจากผู้ให้บริการอินเทอร์เน็ต (ISP) เพื่อกำหนดค่าเราเตอร์อย่างถูกต้อง



2. เชื่อมต่อโมเด็มของคุณเข้ากับเราเตอร์ด้วยสายเคเบิล เครือข่ายที่ใหม่มา



3. เปิดเคเบิล/โมเด็ม DSL
4. ตรวจสอบไฟ LED ของเคเบิล/โมเด็ม DSL เพื่อให้แน่ใจว่าการเชื่อมต่อทำงานอยู่

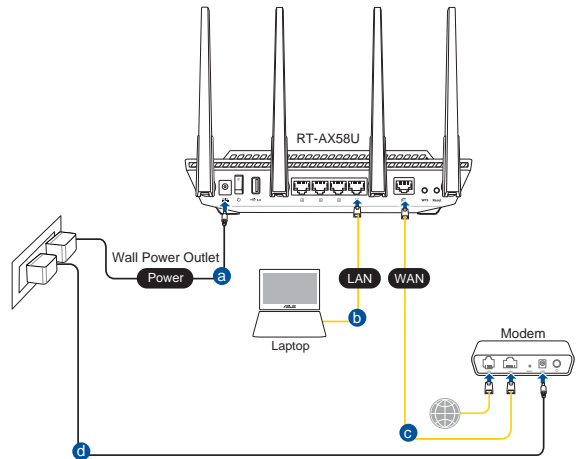


การตั้งค่า RT-AX58U

คุณสามารถตั้งค่าเราเตอร์ ผ่านการเชื่อมต่อแบบมีสายหรือไร้สาย:

A. การเชื่อมต่อแบบมีสาย:

1. เสียบเราเตอร์เข้ากับเต้าเสียบและ เปิดเครื่อง เชื่อมต่อสายเคเบิลเครือข่ายจากคอมพิวเตอร์ไปยัง พอร์ต LAN บนเราเตอร์ของคุณ



2. เว็บ GUI จะเปิดใช้งานโดยอัตโนมัติเมื่อคุณเปิดเว็บเบราว์เซอร์ หากไม่เปิดใช้งานโดยอัตโนมัติ เข้าไปที่ <http://router.asus.com>
3. ตั้งค่ารหัสผ่านสำหรับเราเตอร์ของคุณเพื่อความปลอดภัยจากการเข้าถึงที่ไม่ได้รับ อนุญาต

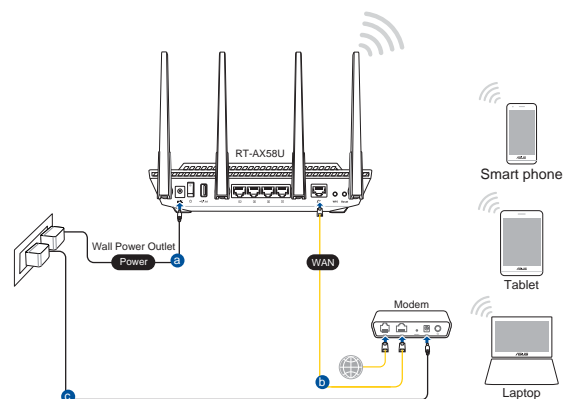
Login Information Setup

Change the router password to prevent unauthorized access to your ASUS wireless router.

| | |
|-------------------|--|
| Router Login Name | admin |
| New Password | |
| Retype Password | <input type="checkbox"/> Show password |

B. การเชื่อมต่อไร้สาย

1. เสียบเราเตอร์เข้ากับเต้าเสียบและ เปิดเครื่อง



2. เชื่อมต่อกับชื่อเครือข่าย (SSID) ที่แสดงบนฉลากผลิตภัณฑ์ที่ด้านหลังของเราเตอร์ เพื่อการรักษาความปลอดภัยของเครือข่ายที่ดีกว่า เปลี่ยนเป็น SSID ที่มีลักษณะเฉพาะและกำหนดรหัสผ่าน

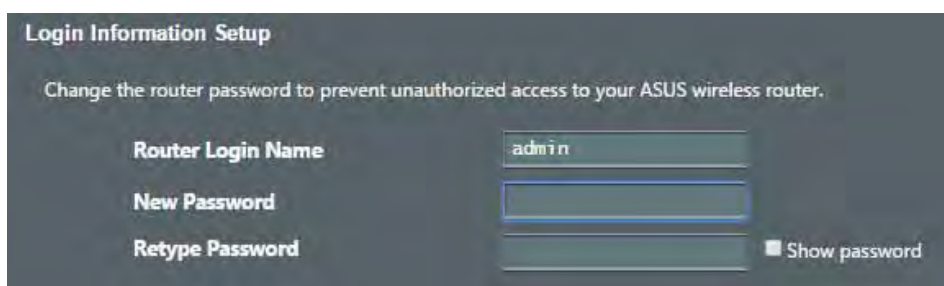


| | |
|-------------------------|------------|
| ชื่อ Wi-Fi 2.4G (SSID): | ASUS_XX_2G |
| ชื่อ Wi-Fi 5G (SSID): | ASUS_XX_5G |

* XX หมายถึงตัวเลขสองหลักสุดท้ายของ MAC แอดเดรส 2.4GHz คุณสามารถค้นหาได้บนฉลากด้านหลังของ RT-AX58U

3. คุณสามารถเลือกเว็บ GUI หรือแอป ASUS Router เพื่อตั้งค่าเราเตอร์ของคุณ
- a. ตั้งค่าผ่านเว็บ GUI

- เมื่อเชื่อมต่อแล้ว เว็บ GUI จะเปิดใช้งานโดยอัตโนมัติเมื่อคุณเปิดเว็บเบราว์เซอร์ หากไม่เปิดใช้งานโดยอัตโนมัติ เข้าไปที่ <http://router.asus.com>
- ตั้งค่ารหัสผ่านสำหรับเราเตอร์ของคุณเพื่อความปลอดภัยจากการเข้าถึงที่ไม่ได้รับอนุญาต



b. ตั้งค่าผ่านแอป

ดาวน์โหลดแอป ASUS Router เพื่อตั้งค่าเราเตอร์ผ่านอุปกรณ์เคลื่อนที่



ASUS Router



- เปิด Wi-Fi บนอุปกรณ์เคลื่อนที่ของคุณ และเชื่อมต่อกับเครือข่ายของ RT-AX58U

- ปฏิบัติตามคำแนะนำการตั้งค่าแอป ASUS Router เพื่อทำการตั้งค่าให้สมบูรณ์



การจดจำการตั้งค่าเราเตอร์ไร้สาย

- จดจำการตั้งค่าไร้สายของคุณเมื่อคุณเสร็จสิ้นการตั้งค่าเราเตอร์

| | |
|----------------------------|-----------|
| ชื่อเราเตอร์: | รหัสผ่าน: |
| SSID ของเครือข่าย 2.4 GHz: | รหัสผ่าน: |
| SSID ของเครือข่าย 5G Hz: | รหัสผ่าน: |

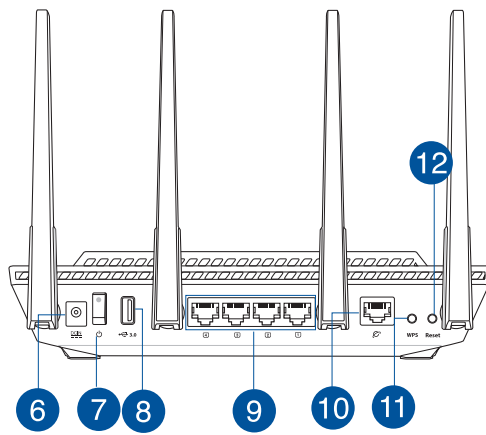
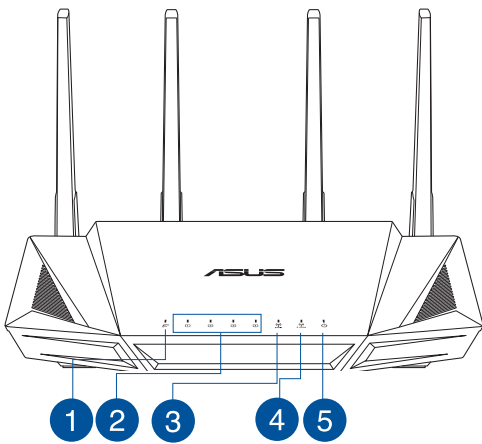
คำถามที่ถามบ่อย

1. สามารถหาข้อมูลเพิ่มเติมเกี่ยวกับเราเตอร์แบบไร้สายได้จากที่ไหน?
 - ไซต์ FAQ ออนไลน์: <https://www.asus.com/support/faq>
 - ไซต์สนับสนุนด้านเทคนิค: <https://www.asus.com/support>
 - สายด่วนบริการลูกค้า: ดูที่หัวข้อสายด่วนบริการในคู่มือเริ่มต้นอย่างรวดเร็ว
 - คุณสามารถขอรับคู่มือผู้ใช้ออนไลน์ได้ที่ <https://www.asus.com/support>

Hàng hóa đóng gói

- ☑ Router không dây RT-AX58U
- ☑ Adapter AC (điện xoay chiều)
- ☑ Cáp mạng (RJ-45)
- ☑ Hướng dẫn khởi động nhanh

Xem nhanh

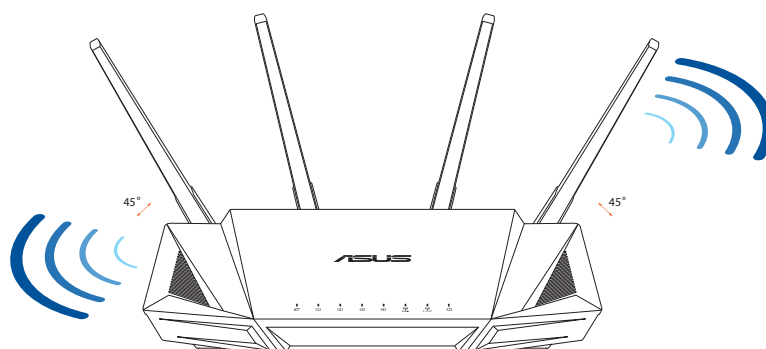


| | |
|--------------------------|------------------------|
| 1 Đèn LED WAN (Internet) | 7 Nút nguồn |
| 2 Đèn LED LAN 1~4 | 8 Cổng USB 3.0 |
| 3 Đèn LED 5GHz | 9 Cổng LAN 1~4 |
| 4 Đèn LED 2,4GHz | 10 Cổng WAN (Internet) |
| 5 Đèn LED nguồn | 11 Nút WPS |
| 6 Cổng nguồn (DC-IN) | 12 Nút khởi động lại |

Bố trí router không dây

Để truyền tín hiệu không dây tối ưu giữa router không dây và các thiết bị mạng vừa kết nối, đảm bảo bạn:

- Đặt router không dây ở khu vực trung tâm có phạm vi phủ sóng không dây tối đa dành cho các thiết bị mạng.
- Đặt thiết bị cách xa các vật cản kim loại và ánh sáng mặt trời trực tiếp.
- Đặt thiết bị cách xa các thiết bị Wi-Fi 802.11g hoặc 20MHz, thiết bị ngoại vi máy tính 2,4GHz, thiết bị Bluetooth, điện thoại di động, máy biến áp, động cơ công suất cao, ánh sáng huỳnh quang, lò vi sóng, tủ lạnh và các thiết bị công nghiệp khác để phòng tránh nhiễu hoặc mất tín hiệu.
- Luôn cập nhật bằng firmware mới nhất. Truy cập trang web ASUS tại <http://www.asus.com> để tải các cập nhật firmware mới nhất.
- Để đảm bảo tín hiệu không dây tối ưu, hãy định hướng 4 ăngten có không thể tháo rời như minh họa trong bảng vẽ dưới đây.



LƯU Ý:

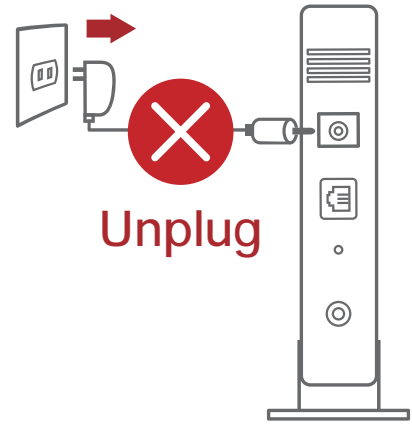
- Chỉ nên sử dụng adapter kèm theo gói sản phẩm của bạn. Sử dụng các adapter khác có thể làm hỏng thiết bị.
- **Thông số kỹ thuật:**

| | | | |
|---------------------------|--|----------|--------|
| Adapter nguồn DC | Đầu ra DC: +19V với dòng điện tối đa 1,75A | | |
| Nhiệt độ hoạt động | 0~40°C | Bảo quản | 0~70°C |
| Độ ẩm hoạt động | 50~90% | Bảo quản | 20~90% |

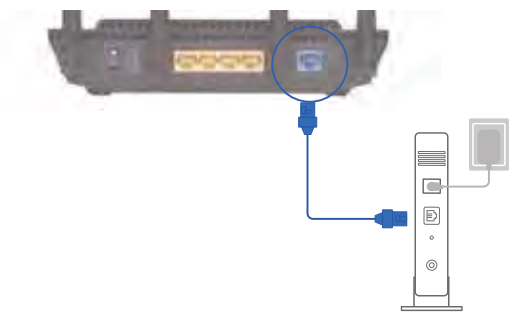
Chuẩn bị modem

1. Ngắt cáp nguồn/modem DSL. Nếu có dùng pin dự phòng, hãy tháo pin ra.

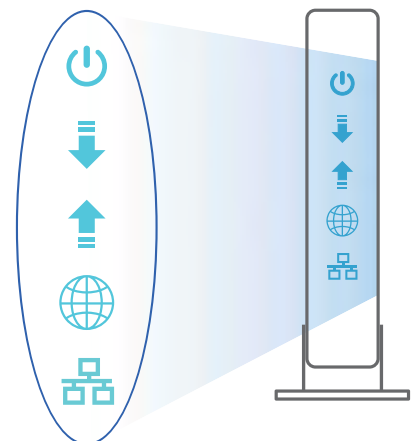
LƯU Ý: Nếu đang sử dụng DSL cho internet, bạn cần có tên người dùng/mật khẩu từ Nhà cung cấp Dịch vụ Internet (ISP) để thiết lập router đúng cách.



2. Kết nối modem của bạn với router bằng cáp mạng kèm theo.



3. Bật nguồn modem cáp/DSL.
4. Kiểm tra ánh sáng đèn LED trên modem cáp/DSL để đảm bảo kết nối đang hoạt động.

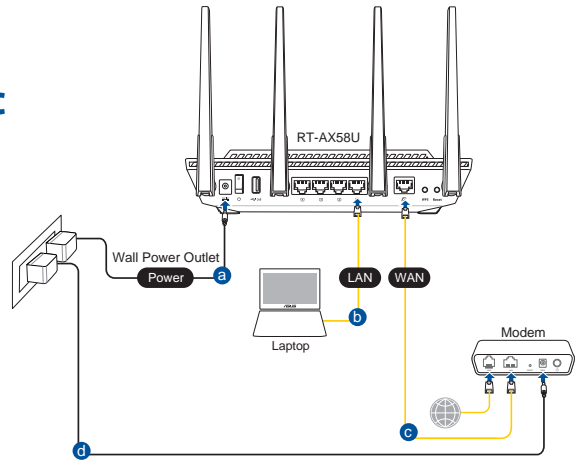


Thiết lập RT-AX58U

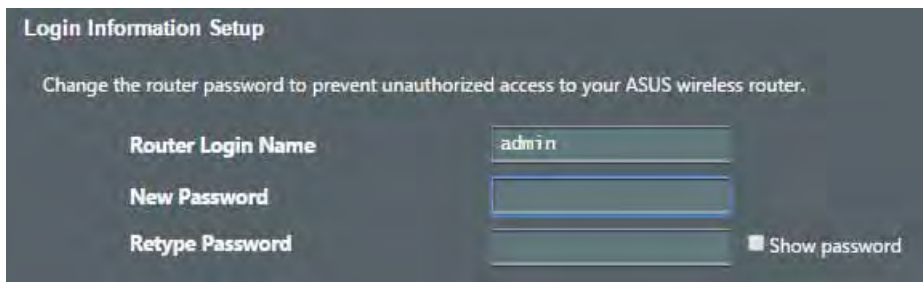
Để thiết lập router qua kết nối có dây hoặc không dây.

A. Kết nối có dây

1. Cắm router vào ổ cắm điện và bật nguồn router. Cắm cáp mạng từ máy tính vào cổng LAN trên router.

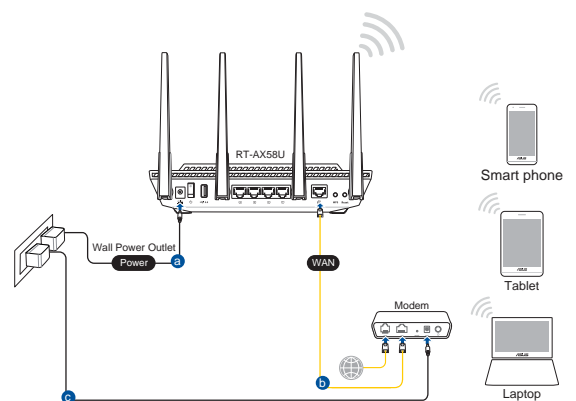


2. GUI (giao diện người dùng đồ họa) web sẽ tự động bật lên khi bạn mở trình duyệt web. Nếu nó không tự động bật lên, hãy nhập <http://router.asus.com>.
3. Thiết lập mật khẩu cho router để ngăn chặn truy cập trái phép.



B. Kết nối mạng không dây

1. Cắm router vào ổ cắm điện và bật nguồn router.



2. Kết nối với tên mạng (SSID) in trên nhãn sản phẩm ở phía sau router. Để bảo mật mạng tốt hơn, hãy đổi sang SSID duy nhất và gán một mật khẩu.



| | |
|------------------------|------------|
| Tên Wi-Fi 2.4G (SSID): | ASUS_XX_2G |
|------------------------|------------|

| | |
|----------------------|------------|
| Tên Wi-Fi 5G (SSID): | ASUS_XX_5G |
|----------------------|------------|

- * **XX** đề cập đến hai số cuối của địa chỉ MAC 2.4GHz. Bạn có thể tìm thấy nó trên nhãn ở mặt sau router RT-AX58U.

3. Bạn có thể chọn Web GUI hoặc ứng dụng ASUS Router để thiết lập router.

a. Thiết lập Web GUI

- Một khi đã kết nối, GUI web sẽ tự động bật lên khi bạn mở trình duyệt web. Nếu nó không tự động bật lên, hãy nhập <http://router.asus.com>.
- Thiết lập mật khẩu cho router để ngăn chặn truy cập trái phép.

b. Thiết lập ứng dụng

Tải về Ứng dụng ASUS Router để thiết lập router của bạn qua các thiết bị di động.

- **Bật Wi-Fi trên các thiết bị di động của bạn và kết nối với mạng của RT-AX58U.**
- **Thực hiện theo các hướng dẫn thiết lập Ứng dụng ASUS Router để hoàn tất quy trình thiết lập.**



ASUS Router



ASUS Router

Ghi nhớ các cài đặt router không dây của bạn

- **Ghi nhớ các cài đặt không dây khi bạn hoàn tất thiết lập router.**

| | |
|--------------------|-----------|
| Tên router: | Mật khẩu: |
| SSID mạng 2,4 GHz: | Mật khẩu: |
| SSID mạng 5G Hz: | Mật khẩu: |

Hỏi Đáp

1. Tôi có thể tìm thêm thông tin về router không dây ở đâu?
 - Trang Hỏi Đáp trực tuyến: <https://www.asus.com/support/faq>
 - Trang hỗ trợ kỹ thuật: <https://www.asus.com/support>
 - Đường dây nóng khách hàng: Tham khảo phần Đường dây nóng hỗ trợ trong Torr hướng dẫn khởi động nhanh này
 - Bạn có thể truy cập sổ hướng dẫn sử dụng trực tuyến tại <https://www.asus.com/support>

ASUS Recycling/Takeback Services

ASUS recycling and takeback programs come from our commitment to the highest standards for protecting our environment. We believe in providing solutions for you to be able to responsibly recycle our products, batteries, other components, as well as the packaging materials. Please go to <http://csr.asus.com/english/Takeback.htm> for the detailed recycling information in different regions.

REACH

Complying with the REACH (Registration, Evaluation, Authorisation, and Restriction of Chemicals) regulatory framework, we published the chemical substances in our products at ASUS REACH website at <http://csr.asus.com/english/REACH.htm>

Federal Communications Commission Statement

This device complies with Part 15 of the FCC Rules. Operation is subject to the following two conditions:

- This device may not cause harmful interference.
- This device must accept any interference received, including interference that may cause undesired operation.

This equipment has been tested and found to comply with the limits for a class B digital device, pursuant to part 15 of the FCC Rules. These limits are designed to provide reasonable protection against harmful interference in a residential installation.

This equipment generates, uses and can radiate radio frequency energy and, if not installed and used in accordance with the instructions, may cause harmful interference to radio communications. However, there is no guarantee that interference will not occur in a particular installation. If this equipment does cause harmful interference to radio or television reception, which can be determined by turning the equipment off and on, the user is encouraged to try to correct the interference by one or more of the following measures:

- Reorient or relocate the receiving antenna.
- Increase the separation between the equipment and receiver.

- Connect the equipment into an outlet on a circuit different from that to which the receiver is connected.
- Consult the dealer or an experienced radio/TV technician for help.



WARNING! Any changes or modifications not expressly approved by the party responsible for compliance could void the user's authority to operate the equipment.

Prohibition of Co-location

This device and its antenna(s) must not be co-located or operating in conjunction with any other antenna or transmitter.

IMPORTANT NOTE:

Radiation Exposure Statement: This equipment complies with FCC radiation exposure limits set forth for an uncontrolled environment. End users must follow the specific operating instructions for satisfying RF exposure compliance. To maintain compliance with FCC exposure compliance requirement, please follow operation instruction as documented in this manual.



WARNING! This equipment must be installed and operated in accordance with provided instructions and the antenna(s) used for this transmitter must be installed to provide a separation distance of at least 24 cm from all persons and must not be co-located or operating in conjunction with any other antenna or transmitter.

Compliance Statement of Innovation, Science and Economic Development Canada (ISED)

This device complies with Innovation, Science and Economic Development Canada licence exempt RSS standard(s). Operation is subject to the following two conditions: (1) this device may not cause interference, and (2) this device must accept any interference, including interference that may cause undesired operation of the device.

Operation in the band 5150–5250 MHz is only for indoor use to reduce the potential for harmful interference to co-channel mobile satellite systems.

CAN ICES-3(B)/NMB-3(B)

Radio Frequency (RF) Exposure Information

The radiated output power of the ASUS Wireless Device is below the Innovation, Science and Economic Development Canada radio frequency exposure limits. The ASUS Wireless Device should be used in such a manner such that the potential for human contact during normal operation is minimized.

This equipment should be installed and operated with a minimum distance of 29 cm between the radiator any part of your body.

This device has been certified for use in Canada. Status of the listing in the Innovation, Science and Economic Development Canada's REL (Radio Equipment List) can be found at the following web address:

http://www.ic.gc.ca/eic/site/ceb-bhst.nsf/eng/h_tt00020.html

Additional Canadian information on RF exposure also can be found at the following web:

<https://www.ic.gc.ca/eic/site/smt-gst.nsf/eng/sf08792.html>

Déclaration de conformité de Innovation, Sciences et Développement économique Canada (ISED)

Le présent appareil est conforme aux CNR d'Innovation, Sciences et Développement économique Canada applicables aux appareils radio exempts de licence. L'exploitation est autorisée aux deux conditions suivantes : (1) l'appareil ne doit pas produire de brouillage, et (2) l'utilisateur de l'appareil doit accepter tout brouillage radioélectrique subi, même si le brouillage est susceptible d'en compromettre le fonctionnement.

La bande 5150 – 5250 MHz est réservée uniquement pour une utilisation à l'intérieur afin de réduire les risques de brouillage préjudiciable aux systèmes de satellites mobiles utilisant les mêmes canaux.

CAN ICES-3(B)/NMB-3(B)

Informations concernant l'exposition aux fréquences radio (RF)

La puissance de sortie émise par cet appareil sans fil est inférieure à la limite d'exposition aux fréquences radio d'Innovation, Sciences et Développement économique du Canada (ISED). Utilisez l'appareil sans fil de façon à minimiser les contacts humains lors d'un fonctionnement normal.

Cet équipement doit être installé et utilisé avec un minimum de 29 cm de distance entre la source de rayonnement et votre corps.

L'utilisation de cet appareil est autorisée au Canada. Pour consulter l'entrée correspondant à l'appareil dans la liste d'équipement radio (REL - Radio Equipment List) d'Innovation, Sciences et Développement économique du Canada, rendez-vous sur :

http://www.ic.gc.ca/eic/site/ceb-bhst.nsf/eng/h_tt00020.html

Pour des informations supplémentaires concernant l'exposition aux fréquences radio au Canada, rendez-vous sur : <https://www.ic.gc.ca/eic/site/smt-gst.nsf/eng/sf08792.html>

NCC 警語

經型式認證合格之低功率射頻電機，非經許可，公司、商號或使用者均不得擅自變更頻率、加大功率或變更原設計之特性及功能。

低功率射頻電機之使用不得影響飛航安全及干擾合法通信；經發現有干擾現象時，應立即停用，並改善至無干擾時方得繼續使用。

前項合法通信，指依電信法規定作業之無線電通信。

低功率射頻電機須忍受合法通信或工業、科學及醫療用電波輻射性電機設備之干擾。

「產品之限用物質含有情況」之相關資訊，請參考下表：

| 單元 | 限用物質及其化學符號 | | | | | |
|--|------------|-----------|-----------|----------------------------|---------------|-----------------|
| | 鉛 (Pb) | 汞 (Hg) | 鎘 (Cd) | 六價鉻 (Cr ⁶⁺) | 多溴聯苯 (PBB) | 多溴二苯醚 (PBDE) |
| 印刷電路板及電子組件 | - | | | | | |
| 結構組件（金屬 / 塑膠） | | | | | | |
| 其他組件（如天線/ 指示燈/ 連接線） | | | | | | |
| 其他及其配件（如電源供應器） | - | | | | | |
| 備考1. “ ” 係指該項限用物質之百分比含量未超出百分比含量基準值。 備考2. “ - ” 係指該項限用物質為排除項目。 | | | | | | |

DFS 警語

操作在 5.15-5.35/5.47-5.85GHz 之無線資訊傳輸設備 (802.11a/ac 產品) , 應避免影響附近雷達系統之操作。

MPE

本產品電磁波曝露量 (MPE) 標準值 $1\text{mW}/\text{cm}^2$, 送測產品實測值為 $0.4828\text{mW}/\text{cm}^2$, 建議使用時至少距離人體 20cm。

安全說明：

- 請在溫度為 0°C (32°F)至 40°C (104°F)之間的環境中使用本產品
- 請依照產品上的電源功率貼紙說明使用正確的電源變壓器,如果使用錯誤規格的電源變壓器有可能會造成內部零件的損壞
- 請勿將產品放置於不平坦或不穩定的表面,若產品的機殼毀損,請聯絡維修服務人員
- 請勿在產品上放置其他物品,請勿將任何物品塞入產品內,以避免引起元件短路或電路損毀
- 請保持機器在乾燥的環境下使用,雨水、溼氣、液體等含有礦物質將會腐蝕電子線路,請勿在雷電天氣下使用數據機。
- 請勿堵塞產品的通風孔,以避免因散熱不良而導致系統過熱。
- 請勿使用破損的電源線,附件或其他周邊產品。
- 如果電源已毀損,請不要嘗試自行修復,請將其交給專業技術服務人員或經銷商來處理
- 為了防止電擊風險,在搬動主機之前,請先將電源線插頭暫時從電源插座上拔除



電子電氣產品有害物質限制使用標識要求：圖中之數字為產品之環保使用期限。僅指電子電氣產品中含有的有害物質不致發生外洩或突變從而對環境造成污染或對人身、財產造成嚴重損害的期限。

产品中有害物质的名称及含量

| 部件名稱 | 有害物質 | | | | | |
|---|-------|-------|-------|-------------|-----------|-------------|
| | 鉛(Pb) | 汞(Hg) | 鎘(Cd) | 六價鉻(Cr(VI)) | 多溴聯苯(PBB) | 多溴二苯醚(PBDE) |
| 印刷電路板及其電子組件 | × | | | | | |
| 外殼 | | | | | | |
| 電源適配器 | × | | | | | |
| 外部信號連接頭及線材 | × | | | | | |
| 中央處理器與內存 | × | | | | | |
| <p>本表格依據 SJ/T 11364 的規定編制。</p> <p style="padding-left: 20px;">：表示該有害物質在該部件所有均質材料中的含量均在 GB/T 26572 規定的限量要求以下。</p> <p style="padding-left: 20px;">×：表示該有害物質至少在該部件的某一均質材料中的含量超出 GB/T 26572 規定的限量要求，然該部件仍符合歐盟指令 2011/65/EU 的規範。</p> <p>備註：此產品所標示之環保使用期限，係指在一般正常使用狀況下。</p> | | | | | | |

安全說明:

- 请在温度为0°C (32°F)至40°C (104°F)之间的环境中使用本产品。
- 请依照产品上的电源功率贴纸说明使用正确的电源变压器, 如果使用错误规格的电源变压器有可能会造成内部零件的损坏。
- 请勿将产品放置于不平坦或不稳定的表面, 若产品的机壳毁损, 请联络维修服务人员。
- 请勿在产品上放置其他物品, 请勿将任何物品塞入产品内, 以避免引起组件短路或电路损毁。
- 请保持机器在干燥的环境下使用, 雨水、湿气、液体等含有矿物质将会腐蚀电子线路, 请勿在雷电天气下使用数据机。
- 请勿堵塞产品的通风孔, 以避免因散热不良而导致系统过热。
- 请勿使用破损的电源线, 附件或其他周边产品。
- 如果电源已毁损, 请不要尝试自行修复, 请将其交给专业技术服务人员或经销商来处理。
- 为了防止电击风险, 在搬动主机之前, 请先将电源线插头暂时从电源插座上拔除。

Precautions for the use of the device

- a. Pay particular attention to the personal safety when use this device in airports, hospitals, gas stations and professional garages.
- b. Medical device interference: Maintain a minimum distance of at least 15 cm (6 inches) between implanted medical devices and ASUS products in order to reduce the risk of interference.
- c. Kindly use ASUS products in good reception conditions in order to minimize the radiation's level.
- d. Keep the device away from pregnant women and the lower abdomen of the teenager.

Précautions d'emploi de l'appareil

- a. Soyez particulièrement vigilant quant à votre sécurité lors de l'utilisation de cet appareil dans certains lieux (les avions, les aéroports, les hôpitaux, les stations-service et les garages professionnels).
- b. Évitez d'utiliser cet appareil à proximité de dispositifs médicaux implantés. Si vous portez un implant électronique (stimulateurs cardiaques, pompes à insuline, neurostimulateurs...), veuillez impérativement respecter une distance minimale de 15 centimètres entre cet appareil et votre corps pour réduire les risques d'interférence.
- c. Utilisez cet appareil dans de bonnes conditions de réception pour minimiser le niveau de rayonnement. Ce n'est pas toujours le cas dans certaines zones ou situations, notamment dans les parkings souterrains, dans les ascenseurs, en train ou en voiture ou tout simplement dans un secteur mal couvert par le réseau.
- d. Tenez cet appareil à distance des femmes enceintes et du bas-ventre des adolescents.

India RoHS

This product complies with the "India E-Waste (Management) Rules, 2016" and prohibits use of lead, mercury, hexavalent chromium, polybrominated biphenyls(PBBs) and polybrominated diphenyl ethers (PBDEs) in concentrations exceeding 0.1 % by weight in homogenous materials and 0.01 % by weight in homogenous materials for cadmium, except for the exemptions listed in Schedule II of the Rule.

| | |
|--|--|
| Manufacturer | ASUSTeK Computer Inc. Tel: +886-2-2894-3447 Address: 4F, No. 150, LI-TE RD., PEITOU, TAIPEI 112, TAIWAN 華碩電腦股份有限公司 電話 : +886-2-2894-3447 地址 : 台灣臺北市北投區立德路 15 號 |
| Authorised representative in Europe | ASUS Computer GmbH Address: HARKORT STR. 21-23, 40880 RATINGEN, GERMANY |
| Authorised distributors in Turkey | BOGAZICI BILGISAYAR TICARET VE SANAYI A.S. Tel./FAX No.: +90 212 331 10 00 / +90 212 332 28 90 Address: ESENTEPE MAH. BUYUKDERE CAD. ERCAN HAN B BLOK NO.121 SISLI, ISTANBUL 34394 |
| | CIZGI Elektronik San. Tic. Ltd. Sti. Tel./FAX No.: +90 212 356 70 70 / +90 212 356 70 69 Address: GURSEL MAH. AKMAN SK.47B 1 KAGITHANE/ISTANBUL |
| | KOYUNCU ELEKTRONİK BİLGİ İŞLEM SİST. SAN. VE DİŞ TİC. A.S. Tel. No.: +90 216 5288888 Address: EMEK MAH.ORDU CAD. NO:18, SARIGAZI, SANCAKTEPE ISTANBUL |
| | ENDEKS BİLİŞİM SAN VE DİŞ TİC LTD ŞTİ Tel./FAX No.: +90 216 523 35 70 / +90 216 523 35 71 Address: NECIP FAZIL BULVARI, KEYAP CARSI SITESI, G1 BLOK, NO:115 Y.DUDULLU, UMRANIYE, ISTANBUL |
| | PENTA TEKNOLOJİ URUNLERİ DAGITIM TICARET A.S Tel./FAX No.: +90 216 528 0000 Address: ORGANIZE SANAYI BOLGESI NATO YOLU 4.CADDE NO:1 UMRANIYE, ISTANBUL 34775 |
| | |

Networks Global Hotline Information

| Region | Country/ Area | Hotline Number | Service Hours |
|--------------------------|----------------------------|--|--|
| Europe | Cyprus | 800-92491 | 09:00-13:00 ; 14:00-18:00 Mon-Fri |
| | France | 0033-170949400 | 09:00-18:00 Mon-Fri |
| | Germany | 0049-1805010920 | 09:00-18:00 Mon-Fri 10:00-17:00 Mon-Fri |
| | | 0049-1805010923 (component support) | |
| | | 0049-2102959911 (Fax) | |
| | Hungary | 0036-15054561 | 09:00-17:30 Mon-Fri |
| | Italy | 199-400089 | 09:00-13:00 ; 14:00-18:00 Mon-Fri |
| | Greece | 00800-44142044 | 09:00-13:00 ; 14:00-18:00 Mon-Fri |
| | Austria | 0043-820240513 | 09:00-18:00 Mon-Fri |
| | Netherlands/ Luxembourg | 0031-591570290 | 09:00-17:00 Mon-Fri |
| | Belgium | 0032-78150231 | 09:00-17:00 Mon-Fri |
| | Norway | 0047-2316-2682 | 09:00-18:00 Mon-Fri |
| | Sweden | 0046-858769407 | 09:00-18:00 Mon-Fri |
| | Finland | 00358-969379690 | 10:00-19:00 Mon-Fri |
| | Denmark | 0045-38322943 | 09:00-18:00 Mon-Fri |
| | Poland | 0048-225718040 | 08:30-17:30 Mon-Fri |
| | Spain | 0034-902889688 | 09:00-18:00 Mon-Fri |
| | Portugal | 00351-707500310 | 09:00-18:00 Mon-Fri |
| | Slovak Republic | 00421-232162621 | 08:00-17:00 Mon-Fri |
| | Czech Republic | 00420-596766888 | 08:00-17:00 Mon-Fri |
| | Switzerland-Ger- man | 0041-848111010 | 09:00-18:00 Mon-Fri |
| Switzer- land-French | 0041-848111014 | 09:00-18:00 Mon-Fri | |
| Switzerland-Ital- ian | 0041-848111012 | 09:00-18:00 Mon-Fri | |
| United Kingdom | 0044-1442265548 | 09:00-17:00 Mon-Fri | |
| Ireland | 0035-31890719918 | 09:00-17:00 Mon-Fri | |
| Russia and CIS | 008-800-100-ASUS | 09:00-18:00 Mon-Fri | |
| Ukraine | 0038-0445457727 | 09:00-18:00 Mon-Fri | |

Networks Global Hotline Information

| Region | Country/ Area | Hotline Numbers | Service Hours |
|---------------------|--|--|--|
| Asia-Pacific | Australia | 1300-278788 | 09:00-18:00 Mon-Fri |
| | New Zealand | 0800-278788 | 09:00-18:00 Mon-Fri |
| | Japan | 0800-1232787 | 09:00-18:00 Mon-Fri 09:00-17:00 Sat-Sun |
| | | 0081-570783886 (Non-Toll Free) | 09:00-18:00 Mon-Fri 09:00-17:00 Sat-Sun |
| | Korea | 0082-215666868 | 09:30-17:00 Mon-Fri |
| | Thailand | 0066-24011717 | 09:00-18:00 Mon-Fri |
| | | 1800-8525201 | |
| | Singapore | 0065-64157917 | 11:00-19:00 Mon-Fri |
| | | 0065-67203835 | 11:00-19:00 Mon-Fri |
| | | (Repair Status Only) | 11:00-13:00 Sat |
| | Malaysia | 1300-88-3495 | 9:00-18:00 Mon-Fri |
| | Philippine | 1800-18550163 | 09:00-18:00 Mon-Fri |
| | India | 1800-2090365 | 09:00-18:00 Mon-Sat |
| | | | 09:00-21:00 Mon-Sun |
| | Indonesia | 0062-2129495000 500128 (Local Only) | 09:30-17:00 Mon-Fri |
| 9:30 – 12:00 Sat | | | |
| Vietnam | 1900-555581 | 08:00-12:00 13:30-17:30 Mon-Sat | |
| | | | |
| Hong Kong | 00852-35824770 | 10:00-19:00 Mon-Sat | |
| Taiwan | 0800-093-456; 02-81439000 | 9:00-12:00 Mon-Fri; | |
| | | 13:30-18:00 Mon-Fri | |
| Americas | USA Canada | 1-812-282-2787 | 8:30-12:00 EST Mon-Fri |
| | | | 9:00-18:00 EST Sat-Sun |
| | Mexico | 001-8008367847 | 08:00-20:00 CST Mon-Fri |
| | | | 08:00-15:00 CST Sat |
| Brazil | 4003 0988 (Capital) 0800 880 0988 (demais localidades) | 9:00am-18:00 Mon-Fri | |
| | | | |

Networks Global Hotline Information

| Region | Country/ Area | Hotline Numbers | Service Hours |
|-----------------------------|--------------------|--|--|
| Middle East + Africa | Egypt | 800-2787349 | 09:00-18:00 Sun-Thu |
| | Saudi Arabia | 800-1212787 | 09:00-18:00 Sat-Wed |
| | UAE | 00971-42958941 | 09:00-18:00 Sun-Thu |
| | Turkey | 0090-2165243000 | 09:00-18:00 Mon-Fri |
| | South Africa | 0861-278772 | 08:00-17:00 Mon-Fri |
| | Israel | *6557/00972-39142800 *9770/00972-35598555 | 08:00-17:00 Sun-Thu 08:30-17:30 Sun-Thu |
| Balkan Countries | Romania | 0040-213301786 | 09:00-18:30 Mon-Fri |
| | Bosnia Herzegovina | 00387-33773163 | 09:00-17:00 Mon-Fri |
| | Bulgaria | 00359-70014411 | 09:30-18:30 Mon-Fri |
| | | 00359-29889170 | 09:30-18:00 Mon-Fri |
| | Croatia | 00385-16401111 | 09:00-17:00 Mon-Fri |
| | Montenegro | 00382-20608251 | 09:00-17:00 Mon-Fri |
| | Serbia | 00381-112070677 | 09:00-17:00 Mon-Fri |
| Slovenia | | 00368-59045400 00368-59045401 | 08:00-16:00 Mon-Fri |
| Baltic Countries | Estonia | 00372-6671796 | 09:00-18:00 Mon-Fri |
| | Latvia | 00371-67408838 | 09:00-18:00 Mon-Fri |
| | Lithuania-Kaunas | 00370-37329000 | 09:00-18:00 Mon-Fri |
| | Lithuania-Vilnius | 00370-522101160 | 09:00-18:00 Mon-Fri |



NOTES:

- UK support e-mail: network_support_uk@asus.com
- For more information, visit the ASUS support site at: <https://www.asus.com/support/>

English

CE statement

Simplified EU Declaration of Conformity

ASUSTek Computer Inc. hereby declares that this device is in compliance with the essential requirements and other relevant provisions of Directive 2014/53/EU. Full text of EU declaration of conformity is available at <https://www.asus.com/Networking/RT-AX58U/HelpDesk/>.

Declaration of Conformity for Ecodesign directive 2009/125/EC

Testing for eco-design requirements according to (EC) No 1275/2008 and (EU) No 801/2013 has been conducted. When the device is in Networked Standby Mode, its I/O and network interface are in sleep mode and may not work properly. To wake up the device, press the Wi-Fi on/off, LED on/off, reset, or WPS button.

This equipment complies with EU radiation exposure limits set forth for an uncontrolled environment. This equipment should be installed and operated with minimum distance 20 cm between the radiator & your body.

All operational modes:

2.4GHz: 802.11b, 802.11g, 802.11n (HT20), 802.11n (HT40), 802.11ac (VHT20), 802.11ac (VHT40), 802.11ax (HE20), 802.11ax (HE40)

5GHz: 802.11a, 802.11n (HT20), 802.11n (HT40), 802.11ac (VHT20), 802.11ac (VHT40), 802.11ac (VHT80), 802.11ac (VHT160), 802.11ax (HE20), 802.11ax (HE40), 802.11ax (HE80), 802.11ax (HE160)

The frequency, mode and the maximum transmitted power in EU are listed below:

2412-2472MHz (802.11ax HE20 MCS0) : 19.98dBm (EIRP)


5180-5240MHz (802.11ax HE20 MCS0) : 22.82dBm (EIRP)

5260-5320MHz (802.11ax HE20 MCS0) : 22.89dBm (EIRP)

5500-5700MHz (802.11ax HE20 MCS0) : 29.87dBm (EIRP)

The device is restricted to indoor use only when operating in the 5150 to 5350 MHz frequency range.

The adapter shall be installed near the equipment and shall be easily accessible.

| | | | | | | | |
|---|----|----|----|----|----|----|----|
|  | AT | BE | BG | CZ | DK | EE | FR |
| | DE | IS | IE | IT | EL | ES | CY |
| | LV | LI | LT | LU | HU | MT | NL |
| | NO | PL | PT | RO | SI | SK | TR |
| | FI | SE | CH | UK | HR | UA | |

Safety Notices

- Use this product in environments with ambient temperatures between 0°C(32°F) and 40°C(104°F).
- Refer to the rating label on the bottom of your product and ensure your power adapter complies with this rating.
- DO NOT place on uneven or unstable work surfaces. Seek servicing if the casing has been damaged.
- DO NOT place or drop objects on top and do not shove any foreign objects into the product.
- DO NOT expose to or use near liquids, rain, or moisture. DO NOT use the modem during electrical storms.
- DO NOT cover the vents on the product to prevent the system from getting overheated.
- DO NOT use damaged power cords, accessories, or other peripherals.
- If the Adapter is broken, do not try to fix it by yourself. Contact a qualified service technician or your retailer.
- To prevent electrical shock hazard, disconnect the power cable from the electrical outlet before relocating the system.