



REPUBLIC OF
GAMERS

ETC14607

QUICK START GUIDE

GT-AX11000

ROG Rapture Tri-band Gaming Router

ROG Rapture 同步三頻無線電競路由器

ROG Rapture 同步三頻電競專用無線分享器

ASUS

Table of contents

Package contents	2
A quick look at your ROG router	2
Preparing your modem	3
Setting up your ROG router	4
A. Wired connection	4
B. Wireless connection	4
Remembering your wireless router settings	6
FAQ	6
Networks Global Hotline Information	23

This QSG contains these languages:

English
简体中文
繁體中文

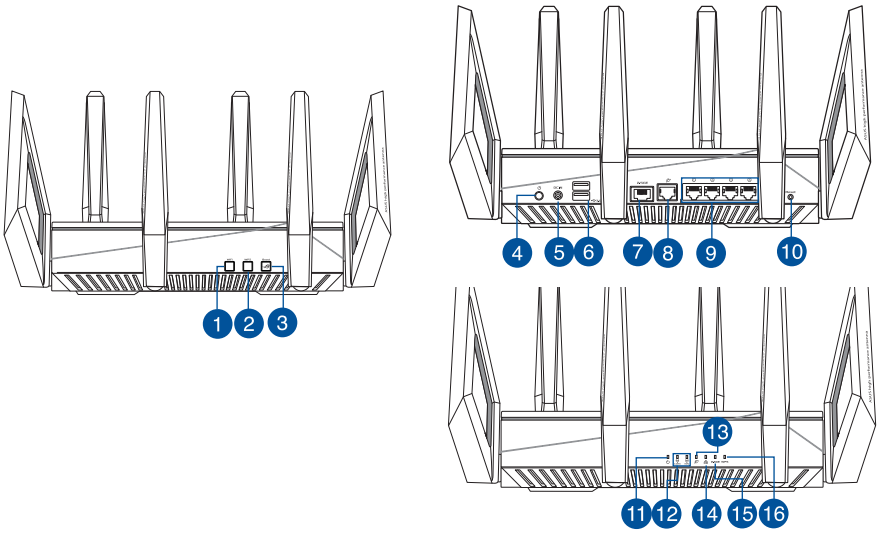
Package contents

- ☑ ROG GT-AX11000 Wireless Router
- ☑ AC adapter
- ☑ Quick Start Guide
- ☑ 8 * wireless antennas
- ☑ Network cable (RJ-45)



NOTE: If any of the items is damaged or missing, contact your retailer.

A quick look at your ROG router



1. Wi-Fi On/Off button	9. LAN ports
2. WPS button	10. Reset Button
3. Boost Key	11. Power LED
4. Power button	12. 2.4GHz / 5GHz Wi-Fi LED
5. Power (DC-IN) port	13. WAN (Internet) LED
6. USB 3.0 ports	14. LAN LED
7. 2.5G Gaming port	15. 2.5G Gaming port LED
8. WAN (Internet) port	16. WPS LED

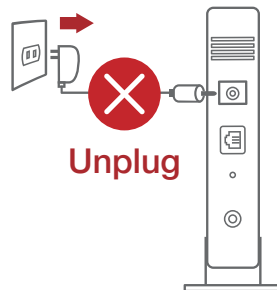
Specifications:

DC Power adapter	DC Output: +19V with max 3.42A current		
Operating Temperature	0~40°C	Storage	0~70°C
Operating Humidity	50~90%	Storage	20~90%

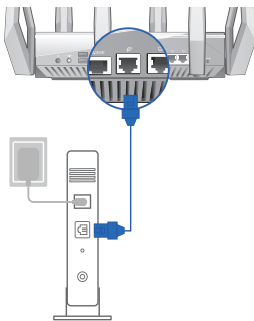
Preparing your modem

1. **Unplug the power cable/DSL modem. If it has a battery backup, remove the battery.**

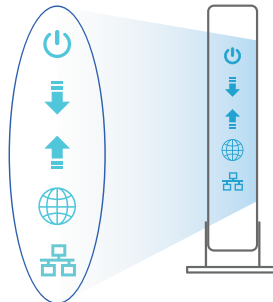
NOTE: If you are using DSL for Internet, you will need your username/password from your Internet Service Provider (ISP) to properly configure the router.



2. **Connect your modem to the router with the bundled network cable.**



3. **Power on your cable/DSL modem.**
4. **Check your cable/DSL modem LED lights to ensure the connection is active.**

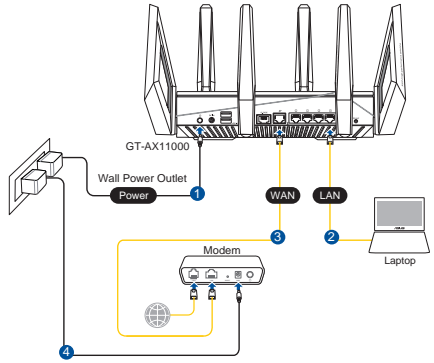


Setting up your ROG router

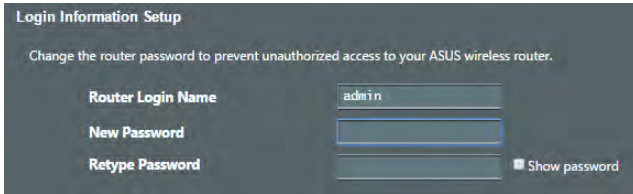
You can set up your ROG router via wired or wireless connection.

A. Wired connection

1. Plug your router into a power outlet and power it on. Connect the network cable from your computer to a LAN port on your router.

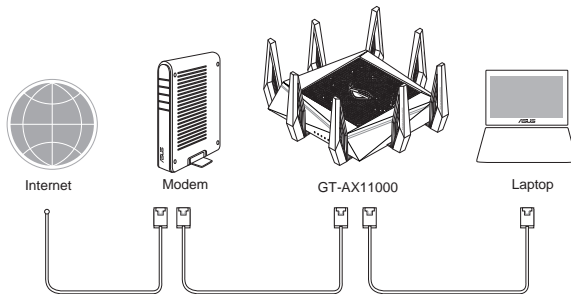


2. The web GUI launches automatically when you open a web browser. If it does not auto-launch, enter <http://router.asus.com>
3. Set up a password for your router to prevent unauthorized access.



B. Wireless connection

1. Plug your router into a power outlet and power it on.



2. Connect to the network name (SSID) shown on the product label on the back side of the router. For better network security, change to a unique SSID and assign a password.



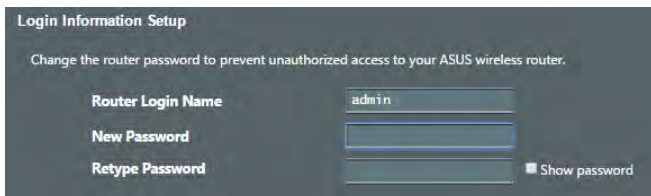
2.4G Wi-Fi Name (SSID):	ASUS_XX_2G
-------------------------	------------

5G-1 Wi-Fi Name (SSID):	ASUS_XX_5G
-------------------------	------------

5G-2 Wi-Fi Name (SSID):	ASUS_XX_5G_Gaming
-------------------------	-------------------

- * **XX** refers to the last two digits of 2.4GHz MAC address. You can find it on the label on the back of your ROG router.

3. Once connected, the web GUI launches automatically when you open a web browser. If it does not auto-launch, enter <http://router.asus.com>.
4. Set up a password for your router to prevent unauthorized access.



Remembering your wireless router settings

- Remember your wireless settings as you complete the router setup.

Router Name:	Password:
2.4 GHz network SSID:	Password:
5GHz-1 network SSID:	Password:
5GHz-2 network SSID:	Password:

FAQ

- Where can I find more information about the wireless router?
 - Online FAQ site: <http://support.asus.com/faq>
 - Technical support site: <https://www.asus.com/support>
 - Customer hotline: refer to the Support Hotline section in this Quick Start Guide

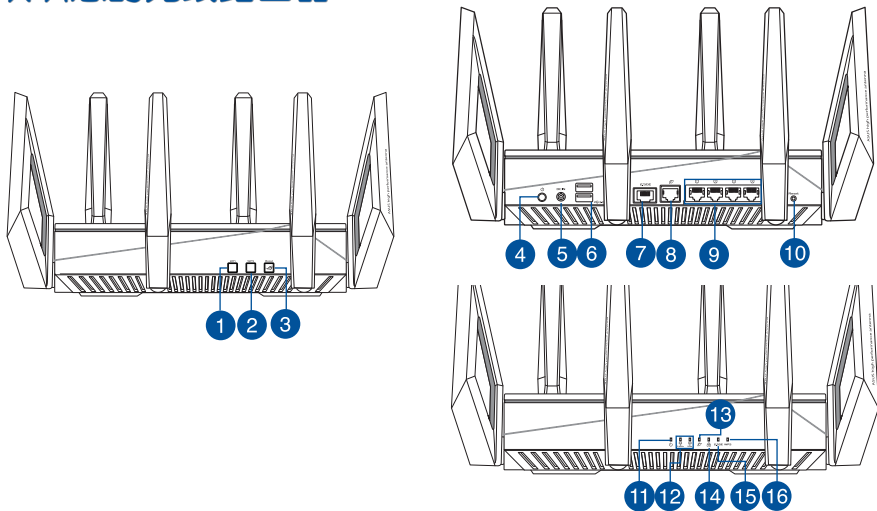
包装内容物

- ROG GT-AX11000 无线路由器
- 8 × 无线传输天线
- 电源适配器
- 网线 (RJ-45)
- 快速开始指南



注意：若以上列出的任何一项配件有损坏或是短缺的情形，请尽快联系您的经销商。

认识您的无线路由器



1. Wi-Fi 开启/关闭按钮	9. LAN 网络接口
2. WPS 按钮	10. 重置按钮
3. Boost Key	11. 电源指示灯
4. 电源开关	12. 2.4GHz / 5GHz Wi-Fi 指示灯
5. 电源输出口 (DC-IN)	13. WAN (互联网) 指示灯
6. USB 3.0 接口	14. LAN 指示灯
7. 2.5G 游戏接口	15. 2.5G 游戏接口指示灯
8. WAN (互联网) 接口	16. WPS 指示灯

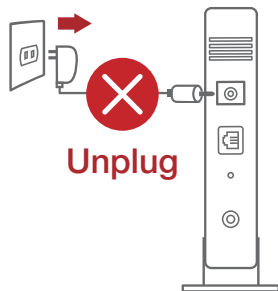
规格

DC 电源适配器	DC 输出：+19V 电压，支持最大 3.42A 电流		
运行温度	0~40°C	保存温度	0~70°C
运行湿度	50~90%	保存湿度	20~90%

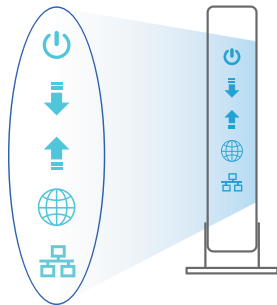
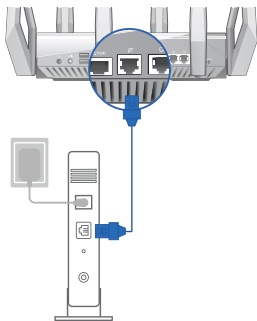
准备您的调制解调器

1. 拔出您的缆线/DSL 调制解调器的电源，若您的调制解调器内含备用电池，请移除电池。

注意： 若您使用 DSL 连接互联网，您需要向您的互联网服务供应商（ISP）取得登录名称/密码，以正确安装您的路由器。



2. 使用附赠的网线连接您的调制解调器与路由器。
3. 开启您的缆线/ DSL 调制解调器。
4. 检查您缆线/ DSL 调制解调器上的指示灯，确认已经连接。

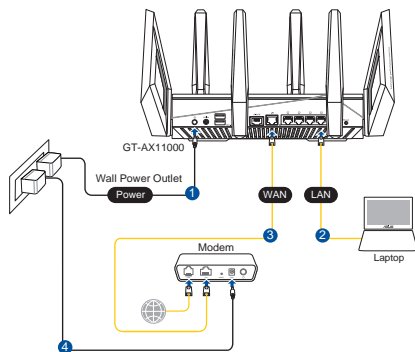


设置您的 ROG 路由器

您可以通过有线和无线两种方式来说设置您的 ROG 路由器。

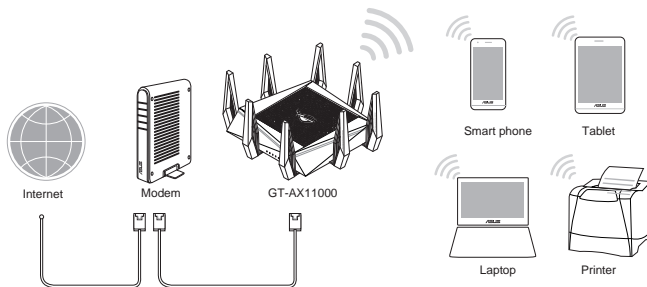
A. 有线连接

1. 将路由器连接到电源插座并开启电源。用网线 (2) 将您的电脑连接到路由器上的 LAN 接口。
2. 当您打开网页浏览器时，网页设置界面会自动出现。若没有出现，请在网址栏中输入 <http://router.asus.com>。
3. 为路由器设置密码以防止未经授权的访问。



B. 无线连接

1. 将路由器连接到电源插座并开启电源。



2. 连接到路由器后方标签上注明的网路名称 (SSID)。为确保最佳的网路安全性，请更改预设的 SSID 和密码。



2.4G Wi-Fi 名称 (SSID):	ASUS_XX_2G
5G-1 Wi-Fi 名称 (SSID):	ASUS_XX_5G
5G-2 Wi-Fi 名称 (SSID):	ASUS_XX_5G_Gaming

* XX 是 2.4GHz MAC 地址的最后两位数字。
您可以在路由器底部的贴纸上找到。

3. 当您打开网页浏览器时，网页设置界面会自动出现。若没有出现，请在网址栏中输入 <http://router.asus.com>。
4. 为路由器设置密码以防止未经授权的访问。



记住无线路由器的设定

- 完成路由器的设置后，请记住您的无线设置。

路由器名称:	密码:
2.4 GHz 网络 SSID:	密码:
5GHz-1 网络 SSID:	密码:
5GHz-2 网络 SSID:	密码:

FAQ

1. 哪里可以找到更多的无线路由器信息？

- 线上支持及常见问题网址：<http://www.asus.com.cn/support/>
- 华硕支持网站：<http://www.asus.com.cn/support/>
- 客户服务热线：请参阅此快速使用指南中的支持热线

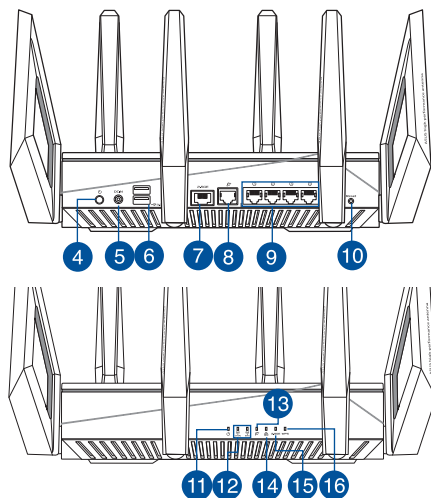
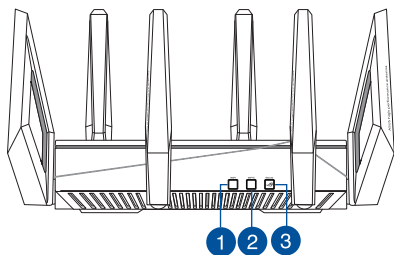
包裝內容物

- ROG GT-AX11000 無線分享器
- 8 × 無線輸出天線
- 電源變壓器
- RJ45 網路線
- 快速使用指南



注意：若以上列出的任何一項配件有毀損或是短缺的情形，請儘速聯絡您的經銷商。

認識您的 ROG 無線分享器



1. Wi-Fi 開關按鈕	9. LAN 連接埠
2. WPS 按鈕	10. 重置按鈕
3. Boost Key	11. 電源指示燈
4. 電源按鈕	12. 2.4GHz / 5GHz Wi-Fi指示燈
5. 電源輸入埠 (DC-IN)	13. WAN (網際網路) 指示燈
6. USB 3.0連接埠	14. LAN 指示燈
7. 2.5G Gaming 連接埠	15. 2.5G Gaming 連接埠指示燈
8. WAN (網際網路) 連接埠	16. WPS 指示燈

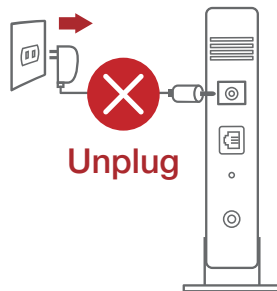
規格

DC 電源變壓器	DC 輸出：+19V 電壓，支援最大 3.42A 電流		
運作溫度	0~40°C	儲存溫度	0~70°C
運作濕度	50~90%	儲存濕度	20~90%

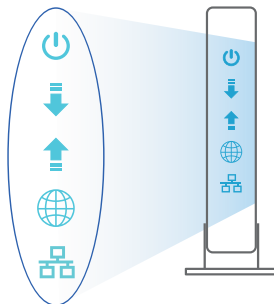
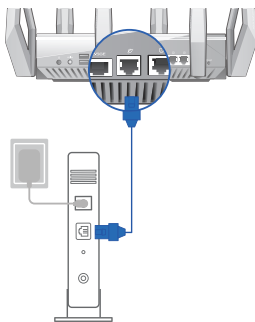
準備您的數據機

1. 拔除您的纜線/DSL數據機電源，若數據機內含備用電池，請移除電池。

注意： 若您使用 DSL 連接網際網路，將會需要向您的網際網路服務供應商 (ISP) 取得登入名稱/密碼，以正確安裝您的無線分享器。



2. 使用附贈的網路線連接您的數據機與無線分享器。
3. 開啟您的纜線/DSL數據機。
4. 檢查您纜線/DSL數據機上的指示燈，確認已經連線。

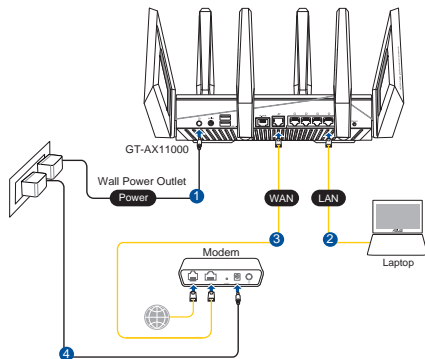


設定您的 ROG 無線分享器

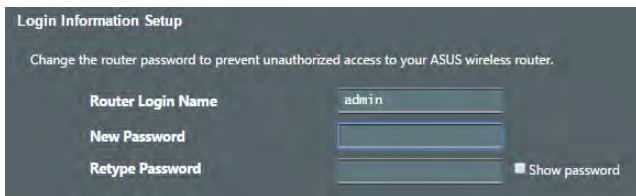
您可以透過有線或無線兩種方式設定您的無線分享器

A. 有線連接

1. 將無線分享器連接到電源插座並開啟電源。用網路線 (2) 將您的電腦連接到無線分享器上的 LAN 連接埠。

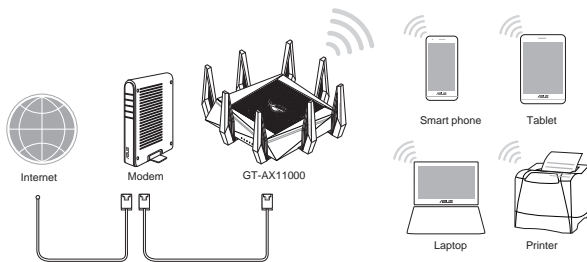


2. 當您開啟網頁瀏覽器時，網頁設定介面會自動出現。若沒有出現，請在網址欄中輸入 <http://router.asus.com>。
3. 為無線分享器設定密碼以防止未經授權的存取。



B. 無線連接

1. 將無線分享器連接到電源插座並開啟電源。



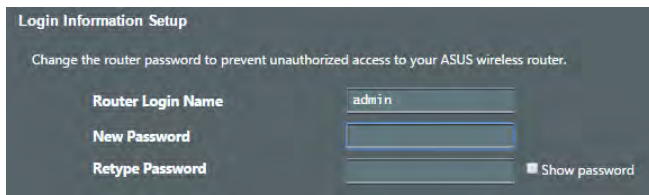
2. 連接到無線分享器後方標籤上註明的網路名稱（SSID）。為確保最佳的網路安全性，請更改預設的 SSID 和密碼。



2.4G Wi-Fi 名稱 (SSID):	ASUS_XX_2G
5G-1 Wi-Fi 名稱 (SSID):	ASUS_XX_5G
5G-2 Wi-Fi 名稱 (SSID):	ASUS_XX_5G_Gaming

- * XX 是 2.4GHz MAC 位址的後兩位數字。您可在機器底部的貼紙上找到。

3. 連接網絡後，當您打開網頁瀏覽器時，網頁設置界面會自動出現。若沒有出現，請在網址欄中輸入 <http://router.asus.com>。
4. 為無線分享器設置密碼以防止未經授權的訪問。



記住無線分享器的設定

- 完成無線分享器的設定後，請記住您的無線設定。

Router Name:	Password:
2.4 GHz network SSID:	Password:
5GHz-1 network SSID:	Password:
5GHz-2 network SSID:	Password:

FAQ

1. 哪裡可以找到更多的無線分享器資訊？

- 線上 FAQ 網址：<http://support.asus.com/faq>
- 華碩支援網站：<https://www.asus.com/tw/support>
- 客戶服務熱線：請參閱此快速使用指南的支援熱線

華碩連絡資訊

華碩電腦公司 ASUSTeK COMPUTER INC. (台灣)

市場訊息

地址：台灣臺北市北投區立德路15號
電話：+886-2-2894-3447
傳真：+886-2-2890-7798
電子郵件：info@asus.com.tw
全球資訊網：<http://tw.asus.com>

技術支援

電話：+886-2-2894-3447 (0800-093-456)
線上支援：<http://www.asus.com/tw/support/>

Safety Notices

- Use this product in environments with ambient temperatures between 0°C(32°F) and 40°C(104°F).
- Refer to the rating label on the bottom of your product and ensure your power adapter complies with this rating.
- DO NOT place on uneven or unstable work surfaces. Seek servicing if the casing has been damaged.
- DO NOT place or drop objects on top and do not shove any foreign objects into the product.
- DO NOT expose to or use near liquids, rain, or moisture. DO NOT use the modem during electrical storms.
- DO NOT cover the vents on the product to prevent the system from getting overheated.
- DO NOT use damaged power cords, accessories, or other peripherals.
- If the Adapter is broken, do not try to fix it by yourself. Contact a qualified service technician or your retailer.
- To prevent electrical shock hazard, disconnect the power cable from the electrical outlet before relocating the system.

ASUS Recycling/Takeback Services

ASUS recycling and takeback programs come from our commitment to the highest standards for protecting our environment. We believe in providing solutions for you to be able to responsibly recycle our products, batteries, other components, as well as the packaging materials. Please go to <http://csr.asus.com/english/Takeback.htm> for the detailed recycling information in different regions.

REACH

Complying with the REACH (Registration, Evaluation, Authorisation, and Restriction of Chemicals) regulatory framework, we published the chemical substances in our products at ASUS REACH website at <http://csr.asus.com/english/REACH.htm>

Federal Communications Commission Statement

This device complies with Part 15 of the FCC Rules. Operation is subject to the following two conditions:

- This device may not cause harmful interference.
- This device must accept any interference received, including interference that may cause undesired operation.

This equipment has been tested and found to comply with the limits for a class B digital device, pursuant to part 15 of the FCC Rules. These limits are designed to provide reasonable protection against harmful interference in a residential installation.

This equipment generates, uses and can radiate radio frequency energy and, if not installed and used in accordance with the instructions, may cause harmful interference to radio communications. However, there is no guarantee that interference will not occur in a particular installation. If this equipment does cause harmful interference to radio or television reception, which can be determined by turning the equipment off and on, the user is encouraged to try to correct the interference by one or more of the following measures:

- Reorient or relocate the receiving antenna.
- Increase the separation between the equipment and receiver.
- Connect the equipment into an outlet on a circuit different from that to which the receiver is connected.
- Consult the dealer or an experienced radio/TV technician for help.



WARNING! Any changes or modifications not expressly approved by the party responsible for compliance could void the user's authority to operate the equipment.

Prohibition of Co-location

This device and its antenna(s) must not be co-located or operating in conjunction with any other antenna or transmitter.

IMPORTANT NOTE:

Radiation Exposure Statement: This equipment complies with FCC radiation exposure limits set forth for an uncontrolled environment. This equipment should be installed and operated with minimum distance 31cm between the radiator & your body.
For product available in the USA/Canada market, only channel 1~11 can be operated. Selection of other channels is not possible.

This device is restricted for indoor use.

All cables used to connect peripherals must be shielded and grounded. Operation with cables connected to peripherals that are not shielded and grounded may result in interference to radio and television reception.

FCC Caution: Any changes or modifications not expressly approved by the party responsible for compliance could void the user's authority to operate this equipment.

Declaration of Conformity for R&TTE directive 1999/5/EC

Essential requirements – Article 3

Protection requirements for health and safety – Article 3.1a

Testing for electric safety according to EN 60950-1 has been conducted. These are considered relevant and sufficient.

Protection requirements for electromagnetic compatibility – Article 3.1b

Testing for electromagnetic compatibility according to EN 301 489-1 and EN 301 489-17 has been conducted. These are considered relevant and sufficient.

Effective use of the radio spectrum – Article 3.2

Testing for radio test suites according to EN 300 328- 2 has been conducted. These are considered relevant and sufficient.

Declaration of Conformity for Ecodesign directive 2009/125/EC

Testing for eco-design requirements according to (EC) No 1275/2008 and (EU) No 801/2013 has been conducted. When the device is in Networked Standby Mode, its I/O and network interface are in sleep mode and may not work properly. To wake up the device, press the Wi-Fi on/off, LED on/off, reset, or WPS button.

CE Mark Warning

This is a Class B product, in a domestic environment, this product may cause radio interference, in which case the user may be required to take adequate measures. Operation Channels: CH1~11 for N. America; Ch1~13 for Japan; CH1~13 for Europe (ETSI)

This equipment may be operated in AT, BE, CY, CZ, DK, EE, FI, FR, DE, GR, HU, IE, IT, LU, MT, NL, PL, PT, SK, SL, ES, SE, GB, IS, LI, NO, CH, BG, RO, RT.

Canada, Industry Canada (IC) Notices

This device contains licence-exempt transmitter(s)/receiver(s) that comply with Innovation, Science and Economic Development Canada's licence-exempt RSS(s). Operation is subject to the following two conditions:

(1) This device may not cause interference.

(2) This device must accept any interference, including interference that may cause undesired operation of the device.

Radio Frequency (RF) Exposure Information

This equipment complies with IC RSS-102 radiation exposure limits set forth for an uncontrolled environment. This equipment should be installed and operated with minimum distance 20cm between the radiator & your body. This device has been certified for use in Canada. Status of the listing in the Industry Canada's REL (Radio Equipment List) can be found at the following web address:
<http://www.ic.gc.ca/app/sitt/reltel/srch/nwRdSrCh.do?lang=eng>
Additional Canadian information on RF exposure also can be found at the following web: <http://www.ic.gc.ca/eic/site/smt-gst.nsf/eng/sf08792.html>

Canada, avis d'Industry Canada (IC)

Cet appareil contient des émetteurs / récepteurs exempts de licence qui sont conformes au (x) RSS (s) exemptés de licence d'Innovation, Sciences et Développement économique Canada. L'opération est soumise aux deux conditions suivantes: (1) Cet appareil ne doit pas provoquer d'interférences. (2) Cet appareil doit accepter toute interférence, y compris les interférences susceptibles de provoquer un fonctionnement indésirable de l'appareil.

Dynamic Frequency Selection (DFS) for devices operating in the bands 5250- 5350 MHz, 5470-5600 MHz and 5650-5725 MHz.

Sélection dynamique de fréquences (DFS) pour les dispositifs fonctionnant dans les bandes 5250-5350 MHz, 5470-5600 MHz et 5650-5725 MHz.

The device for operation in the band 5150–5250 MHz is only for indoor use to reduce the potential for harmful interference to co-channel mobile satellite systems.
les dispositifs fonctionnant dans la bande 5150-5250 MHz sont réservés uniquement pour une utilisation à l'intérieur afin de réduire les risques de brouillage préjudiciable aux systèmes de satellites mobiles utilisant les mêmes canaux.

The maximum antenna gain permitted for devices in the bands 5250-5350 MHz and 5470-5725 MHz shall be such that the equipment still complies with the e.i.r.p. limit.
le gain maximal d'antenne permis pour les dispositifs utilisant les bandes 5250-5350 MHz et 5470-5725 MHz doit se conformer à la limite de p.i.r.e.

The maximum antenna gain permitted for devices in the band 5725-5850 MHz shall be such that the equipment still complies with the e.i.r.p. limits specified for point-to-point and non-point-to-point operation as appropriate.
le gain maximal d'antenne permis (pour les dispositifs utilisant la bande 5725-5850 MHz) doit se conformer à la limite de p.i.r.e. spécifiée pour l'exploitation point à point et non point à point, selon le cas.

For indoor use only.
Pour une utilisation en intérieur uniquement.

Informations concernant l'exposition aux fréquences radio (RF)

Cet équipement est conforme aux limites d'exposition aux rayonnements IC établies pour un environnement non contrôlé. Cet équipement doit être installé et utilisé avec un minimum de 20 cm de distance entre la source de rayonnement et votre corps.

Ce périphérique est homologué pour l'utilisation au Canada. Pour consulter l'entrée correspondant à l'appareil dans la liste d'équipement radio (REL - Radio Equipment List) d'Industry Canada rendez-vous sur:
<http://www.ic.gc.ca/app/sitt/reltel/srch/nwRdSrCh.do?lang=eng>
Pour des informations supplémentaires concernant l'exposition aux RF au Canada rendezvous sur :
<http://www.ic.gc.ca/eic/site/smt-gst.nsf/eng/sf08792.html>

NCC 警語

經型式認證合格之低功率射頻電機，非經許可，公司、商號或使用者均不得擅自變更頻率、加大功率或變更原設計之特性及功能。

低功率射頻電機之使用不得影響飛航安全及干擾合法通信；經發現有干擾現象時，應立即停用，並改善至無干擾時方得繼續使用。

前項合法通信，指依電信法規定作業之無線電通信。

低功率射頻電機須忍受合法通信或工業、科學及醫療用電波輻射性電機設備之干擾。

「產品之限用物質含有情況」之相關資訊，請參考下表：

單元	限用物質及其化學符號					
	鉛 (Pb)	汞 (Hg)	鎘 (Cd)	六價鉻 (Cr ⁶⁺)	多溴聯苯 (PBB)	多溴二苯醚 (PBDE)
印刷電路板及電子組件	-	○	○	○	○	○
結構組件（金屬 / 塑膠）	○	○	○	○	○	○
其他組件（如天線/ 指示燈/連接線）	○	○	○	○	○	○
其他及其配件（如電源供應器）	-	○	○	○	○	○

備者1. “○” 係指該項限用物質之百分比含量未超出百分比含量基準值。
備者2. “-” 係指該項限用物質為排除項目。

DFS 警語

操作在 5.15-5.35/5.47-5.85GHz 之無線資訊傳輸設備 (802.11a/ac 產品)，應避免影響附近雷達系統之操作。

安全說明：

- 請在溫度為0°C (32°F)至40°C (104°F)之間的環境中使用本產品
- 請依照產品上的電源功率貼紙說明使用正確的電源變壓器,如果使用錯誤規格的電源變壓器有可能會造成內部零件的損壞
- 請勿將產品放置於不平坦或不穩定的表面,若產品的機殼毀損,請聯絡維修服務人員
- 請勿在產品上放置其他物品,請勿將任何物品塞入產品內,以避免引起元件短路或電路損毀
- 請保持機器在乾燥的環境下使用,雨水、溼氣、液體等含有礦物質將會腐蝕電子線路,請勿在雷雨天氣下使用數據機。
- 請勿堵塞產品的通風孔,以避免因散熱不良而導致系統過熱。
- 請勿使用破損的電源線,附件或其他周邊產品。
- 如果電源已毀損,請不要嘗試自行修復,請將其交給專業技術服務人員或經銷商來處理
- 為了防止電擊風險,在搬動主機之前,請先將電源線插頭暫時從電源插座上拔除



电子电气产品有害物质限制使用标识要求：图中之数字为产品之环保使用期限。仅指电子电气产品中含有的有害物质不致发生外泄或突变从而对环境造成污染或对人身、财产造成严重损害的期限。

产品中有害物质的名称及含量

部件名称	有害物质					
	铅(Pb)	汞(Hg)	镉(Cd)	六价铬(Cr(VI))	多溴联苯(PBB)	多溴二苯醚(PBDE)
印刷电路板及其电子组件	×	○	○	○	○	○
外壳	○	○	○	○	○	○
电源适配器	×	○	○	○	○	○
外部信号连接头及线材	×	○	○	○	○	○
中央处理器与内存	×	○	○	○	○	○

本表格依据 SJ/T 11364 的规定编制。

○：表示该有害物质在该部件所有均质材料中的含量均在 GB/T 26572 规定的限量要求以下。

×：表示该有害物质至少在该部件的某一均质材料中的含量超出 GB/T 26572 规定的限量要求，然该部件仍符合欧盟指令 2011/65/EU 的规范。

备注：此产品所标示之环保使用期限，系指在一般正常使用状况下。

安全说明:

- 请在温度为0°C (32°F) 至40°C (104°F) 之间的环境中使用本产品。
- 请依照产品上的电源功率贴纸说明使用正确的电源变压器, 如果使用错误规格的电源变压器有可能会造成内部零件的损坏。
- 请勿将产品放置于不平坦或不稳定的表面, 若产品的机壳毁损, 请联络维修服务人员。
- 请勿在产品上放置其他物品, 请勿将任何物品塞入产品内, 以避免引起组件短路或电路损毁。
- 请保持机器在干燥的环境下使用, 雨水、湿气、液体等含有矿物质将会腐蚀电子线路, 请勿在雷电天气下使用数据机。
- 请勿堵塞产品的通风孔, 以避免因散热不良而导致系统过热。
- 请勿使用破损的电源线, 附件或其他周边产品。
- 如果电源已毁损, 请不要尝试自行修复, 请将其交给专业技术服务人员或经销商来处理。
- 为了防止电击风险, 在搬动主机之前, 请先将电源线插头暂时从电源插座上拔除。

Networks Global Hotline Information

Region	Country	Hotline Number	Service Hours	
Europe	Cyprus	800-92491	09:00-13:00; 14:00-18:00 Mon-Fri	
	France	0033-170949400	09:00-18:00 Mon-Fri	
	Germany	0049-1805010920		
		0049-1805010923 (component support)		09:00-18:00 Mon-Fri 10:00-17:00 Mon-Fri
		0049-2102959911 (Fax)		
	Hungary	0036-15054561	09:00-17:30 Mon-Fri	
	Italy	199-400089	09:00-13:00 ; 14:00-18:00 Mon-Fri	
	Greece	00800-44142044	09:00-13:00 ; 14:00-18:00 Mon-Fri	
	Austria	0043-820240513	09:00-18:00 Mon-Fri	
	Netherlands/ Luxembourg	0031-591570290	09:00-17:00 Mon-Fri	
	Belgium	0032-78150231	09:00-17:00 Mon-Fri	
	Norway	0047-2316-2682	09:00-18:00 Mon-Fri	
	Sweden	+46-858769407	09:00-18:00 Mon-Fri	
	Finland	00358-969379690	10:00-19:00 Mon-Fri	
	Denmark	0045-38322943	09:00-18:00 Mon-Fri	
	Poland	0048-225718040	08:30-17:30 Mon-Fri	
	Spain	0034-902889688	09:00-18:00 Mon-Fri	
	Portugal	00351-707500310	09:00-18:00 Mon-Fri	
	Slovak Republic	00421-232162621	08:00-17:00 Mon-Fri	
	Czech Republic	00420-596766888	08:00-17:00 Mon-Fri	
Switzerland-German	0041-848111010	09:00-18:00 Mon-Fri		
Switzerland-French	0041-848111014	09:00-18:00 Mon-Fri		
Switzerland-Italian	0041-848111012	09:00-18:00 Mon-Fri		
United Kingdom	0044-1442265548	09:00-17:00 Mon-Fri		
Ireland	0035-31890719918	09:00-17:00 Mon-Fri		
Russia and CIS	008-800-100-ASUS	09:00-18:00 Mon-Fri		
Ukraine	0038-0445457727	09:00-18:00 Mon-Fri		

Region	Country	Hotline Numbers	Service Hours
Asia-Pacific	Australia	1300-278788	09:00-18:00 Mon-Fri
	New Zealand	0800-278788	09:00-18:00 Mon-Fri
	Japan	0800-1232787	09:00-18:00 Mon-Fri 09:00-17:00 Sat-Sun
		0081-570783886 (Non-Toll Free)	09:00-18:00 Mon-Fri 09:00-17:00 Sat-Sun
	Korea	0082-215666868	09:30-17:00 Mon-Fri
	Thailand	0066-24011717	09:00-18:00 Mon-Fri
		1800-8525201	
	Singapore	0065-64157917	11:00-19:00 Mon-Fri
		0065-67203835 (Repair Status Only)	11:00-19:00 Mon-Fri 11:00-13:00 Sat
	Malaysia	1300-88-3495	9:00-18:00 Mon-Fri
	Philippine	1800-18550163	09:00-18:00 Mon-Fri
	India	1800-2090365	09:00-18:00 Mon-Sat
	India(WL/NW)		09:00-21:00 Mon-Sun
	Indonesia	0062-2129495000	09:30-17:00 Mon-Fri
500128 (Local Only)		9:30 – 12:00 Sat	
Vietnam	1900-555581	08:00-12:00	
		13:30-17:30 Mon-Sat	
Hong Kong	00852-35824770	10:00-19:00 Mon-Sat	
Americas	USA	1-812-282-2787	8:30-12:00 EST Mon-Fri
	Canada		9:00-18:00 EST Sat-Sun
	Mexico	001-8008367847	08:00-20:00 CST Mon-Fri 08:00-15:00 CST Sat

Region	Country	Hotline Numbers	Service Hours
Middle East + Africa	Egypt	800-2787349	09:00-18:00 Sun-Thu
	Saudi Arabia	800-1212787	09:00-18:00 Sat-Wed
	UAE	00971-42958941	09:00-18:00 Sun-Thu
	Turkey	0090-2165243000	09:00-18:00 Mon-Fri
	South Africa	0861-278772	08:00-17:00 Mon-Fri
	Israel	*6557/00972-39142800	08:00-17:00 Sun-Thu
		*9770/00972-35598555	08:30-17:30 Sun-Thu
Balkan Countries	Romania	0040-213301786	09:00-18:30 Mon-Fri
	Bosnia Herzegovina	00387-33773163	09:00-17:00 Mon-Fri
	Bulgaria	00359-70014411	09:30-18:30 Mon-Fri
		00359-29889170	09:30-18:00 Mon-Fri
	Croatia	00385-16401111	09:00-17:00 Mon-Fri
	Montenegro	00382-20608251	09:00-17:00 Mon-Fri
	Serbia	00381-112070677	09:00-17:00 Mon-Fri
Slovenia	00368-59045400	08:00-16:00 Mon-Fri	
	00368-59045401		
Baltic Countries	Estonia	00372-6671796	09:00-18:00 Mon-Fri
	Latvia	00371-67408838	09:00-18:00 Mon-Fri
	Lithuania-Kaunas	00370-37329000	09:00-18:00 Mon-Fri
	Lithuania-Vilnius	00370-522101160	09:00-18:00 Mon-Fri

NOTES:

- UK support e-mail: **network_support_uk@asus.com**
 - For more information, visit the ASUS support site at: **<https://www.asus.com/support>**
-

The image features the ASUS logo in a light grey, sans-serif font, centered horizontally. The background is dark and composed of several diagonal bands. A prominent, glowing orange line runs diagonally from the bottom left towards the top right, creating a sense of depth and movement. The overall aesthetic is sleek and modern, typical of ASUS branding.

ASUS