

ASUS[®]

RT-N12, RT-N12 C1 SuperSpeed N Router

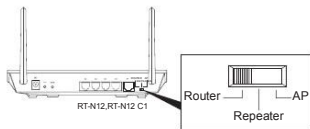


Quick Start Guide

NOTE: For more details on the features of the wireless router, refer to the user manual included in the Utility CD.

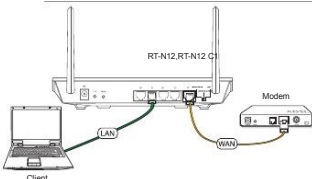
Setting up a Home Network - Router Mode

1. Choose the Router mode.

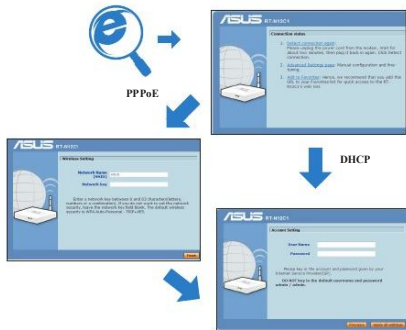


2. Connect your devices.

NOTE: Before you proceed, unplug and disconnect the wires/cables from your existing modem setup. After two minutes, replug and reconnect the wires/cables for your network environment.



3. Launch the web browser and follow the Quick Internet Setup (QIS) steps.



NOTE: If the QIS web page does not appear after launching the web browser, disable the proxy settings on the web browser.

4. Setup is completed.



繁體中文

1. 請先讀取快速指南。
2. 在進行網路設定前，請先將目前網路線上設備的電源關閉，並一分鐘後再重新開啟。
3. 請依照本快速指南，將網路線從您現有的網路環境中拆下。兩分鐘後，再將網路線重新接上您的網路環境。
4. 請依照本快速指南，開啟網路設定網頁 (QIS) 進行網路設定。

簡體中文

1. 請先讀取快速指南。
2. 在進行網路設定前，請先將目前網路線上設備的電源關閉，並一分鐘後再重新開啟。
3. 請依照本快速指南，將網路線從您現有的網路環境中拆下。兩分鐘後，再將網路線重新接上您的網路環境。
4. 請依照本快速指南，開啟網路設定網頁 (QIS) 進行網路設定。

Bahasa Indonesia

1. Baca dulu petunjuk.
2. Sebelum melakukan konfigurasi, pastikan untuk mematikan dan menyalakan kembali semua perangkat jaringan yang ada. Setelah itu tunggu selama 1 menit.
3. Setelah itu, cabut semua kabel yang terpasang ke jaringan yang ada. Setelah itu tunggu selama 2 menit.
4. Setelah itu, pasang kembali semua kabel ke jaringan yang ada. Setelah itu tunggu selama 2 menit.
5. Setelah itu, ikuti petunjuk yang tertera pada halaman web yang akan muncul. Untuk informasi lebih lanjut, silakan kunjungi halaman web ASUS.
6. CATATAN: Jika halaman Web QIS tidak muncul di layar setelah Anda mengklik/buka web Web, maka lakukan prosedur pengujian di bawah ini.

Bahasa Malaysia

1. Baca dulu petunjuk.
2. Sebelum melakukan konfigurasi, pastikan untuk mematikan dan menyalakan kembali semua perangkat jaringan yang ada. Setelah itu tunggu selama 1 menit.
3. Setelah itu, cabut semua kabel yang terpasang ke jaringan yang ada. Setelah itu tunggu selama 2 menit.
4. Setelah itu, pasang kembali semua kabel ke jaringan yang ada. Setelah itu tunggu selama 2 menit.
5. Setelah itu, ikuti petunjuk yang tertera pada halaman web yang akan muncul. Untuk informasi lebih lanjut, silakan kunjungi halaman web ASUS.
6. CATATAN: Jika halaman Web QIS tidak muncul di layar setelah Anda mengklik/buka web Web, maka lakukan prosedur pengujian di bawah ini.

Turkçe

1. Kullanıcı kılavuzunu okuyun.
2. Ağ yapılandırması yapmadan önce, mevcut ağ ortamındaki tüm cihazların güçlerini kapatın ve bir dakika sonra yeniden açın.
3. Daha sonra, mevcut ağ ortamındaki tüm kabloları çıkarın ve bir dakika sonra yeniden takın.
4. Daha sonra, QIS web sayfasını açmak için gerekli adımleri izleyin. Daha fazla bilgi için lütfen ASUS web sayfasını ziyaret edin.
5. NOT: QIS web sayfası ekrana çıkmadıysa, aşağıdaki adımleri izleyin.



ASUS Recycling/Takeback Services
 ASUS recycling and takeback programs come from our commitment to the highest standards for protecting our environment. We are providing solutions for you to be able to responsibly recycle our products, batteries, other components, as well as the packaging materials. Please go to <http://csr.asus.com/english/Takeback.htm> for the detailed recycling information in different regions.

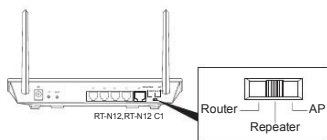
REACH
 Complying with the REACH (Registration, Evaluation, Authorisation, and Restriction of Chemicals) regulatory framework, we published the chemical substances in our products at [ASUS REACH website at http://csr.asus.com/english/REACH.htm](http://csr.asus.com/english/REACH.htm)

Manufacturer:	ASUSTEK COMPUTER INC. Tel: +886-2-2994-3447 Address: No. 150, LI-FE RD., PEITOU, TAIPEI 112, TAIWAN
Authorized representative in Europe:	ASUS Computer GmbH Address: HARKORT STR. 21-23, 40880 RATINGEN, GERMANY
Authorised distributors in Turkey:	BOGAZICI BIL. GYSAYAR SAN. VE TIC. A.Ş. Tel: +90 212 331 1000 Address: AYAZAGA MAHI KEMERBURGAZ CAD. NO:10 AYAZAGA İSTANBUL CIZGI Elektronik San. Tic. Ltd. Sti. Tel: +90 212 3567070 Address: CEMAL SURURI CD. HALIM MERIC IS MERKEZI No: 15/C D-5-6 34394 MECIDIYKÖY/ İSTANBUL

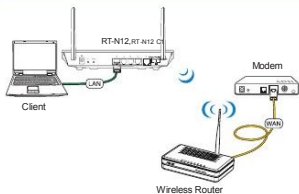
EEE Yönetmeliğine Uygundur.

Extending Your Wireless Network- Repeater Mode

1. Choose the Repeater mode.



2. Connect your devices.



3. Launch the web browser, select a wireless network from the list, and click Connect.



NOTE: If the QSS web page does not appear after launching the web browser, disable the proxy settings in the web browser.

4. Setup is completed.



繁體中文

1. 選擇無線網路。
2. 選擇要連接的無線網路。
3. 選擇要連接的無線網路。
4. 選擇要連接的無線網路。

简体中文

1. 选择无线网络。
2. 选择要连接的无线网络。
3. 选择要连接的无线网络。
4. 选择要连接的无线网络。

Bahasa Indonesia

1. Pilih mode AP.
2. Pilih jaringan yang akan dihubungkan.
3. Pilih jaringan yang akan dihubungkan.
4. Pilih jaringan yang akan dihubungkan.

Bahasa Malaysia

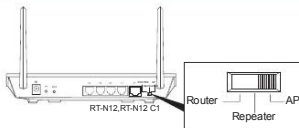
1. Pilih mode Repeater.
2. Pilih jaringan yang akan dihubungkan.
3. Pilih jaringan yang akan dihubungkan.
4. Pilih jaringan yang akan dihubungkan.

Türkçe

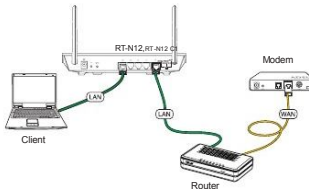
1. Seçenekleri belirleyin.
2. Seçenekleri belirleyin.
3. Seçenekleri belirleyin.
4. Seçenekleri belirleyin.

Extending Your Wired Network - AP Mode

1. Choose the AP mode.



2. Connect your devices.



3. Launch the utility and Device Discovery.



Utility CD



Client



Device Discovery

NOTE: To launch Device Discovery, click Start > Program > ASUS Utility > RT-N12 Wireless Router > Device Discovery.

4. Setup is completed.



Bahasa Indonesia

1. Pilih mode AP.
2. Pilih jaringan yang akan dihubungkan.
3. Pilih jaringan yang akan dihubungkan.
4. Pilih jaringan yang akan dihubungkan.

Bahasa Malaysia

1. Pilih mode AP.
2. Pilih jaringan yang akan dihubungkan.
3. Pilih jaringan yang akan dihubungkan.
4. Pilih jaringan yang akan dihubungkan.

Türkçe

1. Seçenekleri belirleyin.
2. Seçenekleri belirleyin.
3. Seçenekleri belirleyin.
4. Seçenekleri belirleyin.

ASUS Contact information

ASUSTek COMPUTER INC. (Asia)
15 Li-Te Road, Taipei, Taiwan 11299
www.asus.com.tw

Technical Support

Telephone: +88622962447
Support Fax: +88622897696
Software download: support.asus.com*

ASUS COMPUTER INTERNATIONAL (America)
Address: 800 Corporate Way, Fremont, CA 94539, USA
Telephone: +15102958883
Fax: +151029338713
Website: usa.asus.com
Software download: support.asus.com*

ASUS COMPUTER GmbH (Germany and Austria)

Address: Harkort Str. 21-23, D-40880 Ratingen, Germany
Fax: +492102959911
Website: www.asus.com.de
Online contact: www.asus.com/de/uk

Technical Support

Telephone (Component): +491805010925
Telephone (System/Notebook/Free/LCD): +491805010926
Fax: +492102959911
Online support: support.asus.com*

* Available on this site is an online Technical Inquiry Form that you can fill out to contact technical support.

This equipment has been tested and found to comply with the limits for a Class B digital device, pursuant to part 15 of the FCC Rules. These limits are designed to provide reasonable protection against harmful interference in a residential installation. This equipment generates, uses and can radiate radio frequency energy and, if not installed and used in accordance with the instructions, may cause harmful interference to radio communications. However, there is no guarantee that interference will not occur in a particular installation.

If this equipment does cause harmful interference to radio or television reception, which can be determined by turning the equipment off and on, the user is encouraged to try to correct the interference by one or more of the following measures:

- Reorient or relocate the receiving antenna.
- Increase the separation between the equipment and receiver.
- Connect the equipment into an outlet on a circuit different from that to which the receiver is connected.
- Consult the dealer or an experienced radio/TV technician for help.

Changes or modifications not expressly approved by the party responsible for compliance could void the user's authority to operate the equipment.

This equipment complies with FCC radiation exposure limits set forth for an uncontrolled environment.

This equipment should be installed and operated with minimum distance 20 cm between the radiator & your body.

For product available in the USA/Canada, only channel 1 ~ 11 can be operated. Selection of other channels is not possible.