

4 Configuring via the web GUI

Configuring via the web GUI

The router's web graphics user interface (web GUI) allows you to configure these features: **Network Map**, **AiDisk**, and **EZQoS Bandwidth Management**.


To configure via the web GUI:

1. After setting up a wired or wireless connection, launch a web browser. The login page automatically launches.



Note: You may also manually key in the router's default IP address (**192.168.1.1**) to launch the router's web interface.

2. On the login page, key in the default user name (**admin**) and password (**admin**).



Connect to 192.168.1.1

RT-N13U

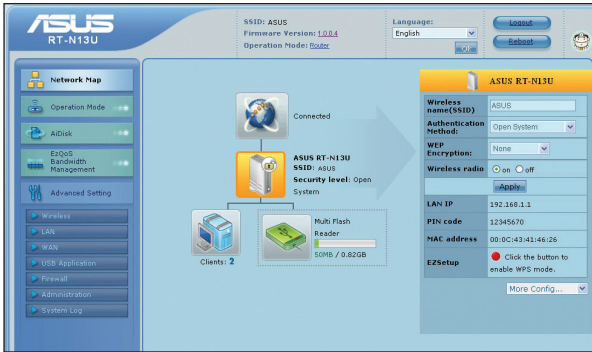
User name:

Password:

Remember my password

OK Cancel

- From the main page, click the navigation menu or links to configure the various features of the ASUS Wireless Router.





Using the Network Map




Network Map allows you to view the status and configure the connection settings of the Internet, system, and clients in your network. It enables you to quickly set up your Wide Area Network (WAN) using the Quick Internet Setup (QIS) feature, or to quickly set up your Local Area Network (LAN) using the WPS Wizard.



Note: For more details on **WPS**, refer to the section **WPS Wizard** in Chapter 5 of this user manual.

To view the status or configure the settings, click any of these icons displayed on the main page:

Icon	Description
	<p>Internet status</p> <p>Click this icon to display information on the Internet connection status, WAN IP address, DNS, connection type, and gateway address. From the Internet status screen, use the Quick Internet Setup (QIS) feature to quickly set up your WAN.</p> <p>Note: For more details on the QIS feature, refer to the section Setting up WAN using the Quick Internet Setup (QIS) on the next page.</p>
	<p>System status</p> <p>Click this icon to display information on the SSID, authentication method, WEP encryption, LAN IP, PIN code, MAC address, or turn the wireless radio on/off. Launch the WPS wizard from the System status screen.</p>

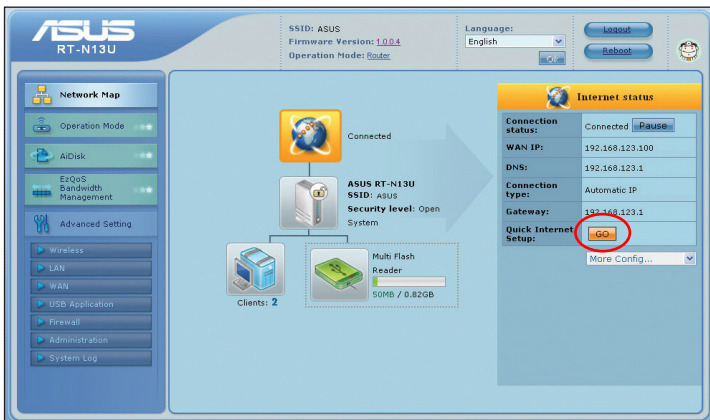
Icon	Description
	Client status Click this icon to display information about the clients or computers in the network, and allows you to block/unblock a client.
	USB disk status Click this icon to display information about the USB disk connected to the wireless router.
	USB printer status Click this icon to display information about the USB printer connected to the wireless router.

Setting up WAN using the Quick Internet Setup (QIS)

The Quick Internet Setup (QIS) function automatically detects the Internet connection type. It guides you in setting up your WAN when encountering special Internet connection types.

To set up your WAN using QIS:

1. Under **Internet status**, click **GO** in the **QIS** field.



2. Select your connection type from these types of ISP services: **Dynamic IP**, **PPPoE**, **PPTP**, **L2TP**, and **Static IP**.
3. Click **Apply all settings** to save the settings.

Using AiDisk

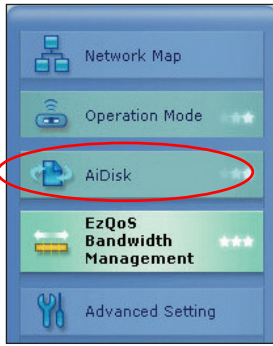
AiDisk allows you to set up an FTP server and share the content of a USB disk to the clients in your network.



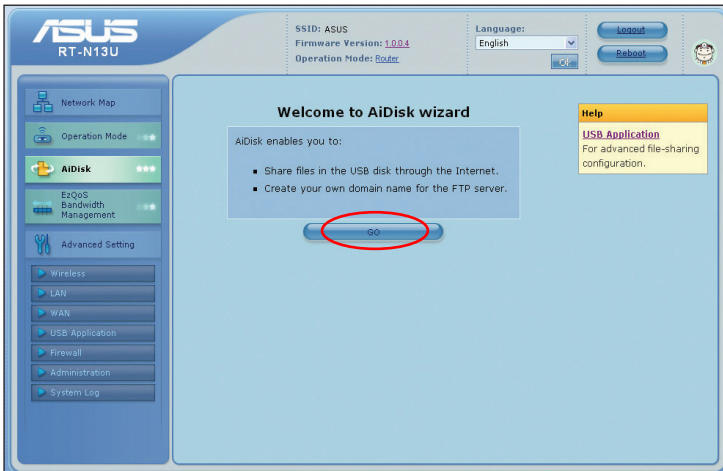
Note: Before using AiDisk, ensure that you have inserted a USB disk into the USB port of your wireless router.

To use AiDisk:

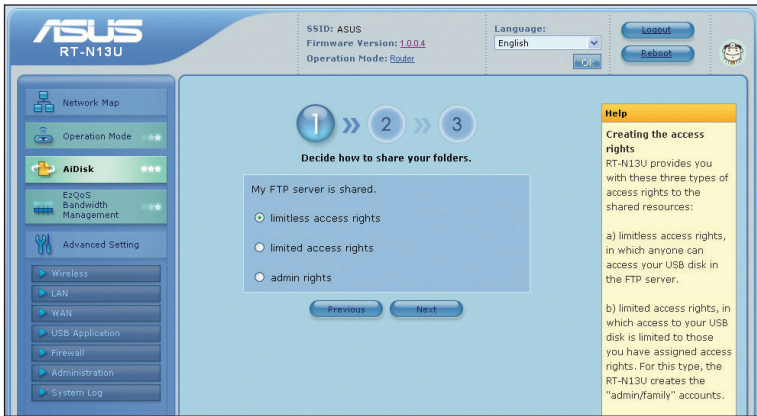
1. Click **AiDisk** from the navigation menu at the left side of your screen.



2. From the **Welcome to AiDisk wizard** screen, click **Go**.



3. Select the access rights that you want to assign to the clients accessing your shared data.



4. If you want to create your own domain name for your FTP site via the ASUS DDNS services, select **I will use the service and accept the Terms of service**. Otherwise, select **Skip ASUS DDNS setting**. Click **Next** to finish the setup.
5. When done, click **Finish**.
6. To access the FTP site that you created, launch a web browser and key in the ftp link (**ftp://<domain name>**).

Managing EzQoS bandwidth

EzQoS Bandwidth Management enables you to set the bandwidth priority and manage the network traffic.

To set up the bandwidth priority:

1. Click **EzQoS Bandwidth Management** from the navigation menu at the left side of your screen.



2. Click each of these four applications to set the bandwidth priority:

Icon	Description
	Gaming Blaster The router handles gaming traffic at first priority.
	Internet Application The router handles the e-mail, web browsing and other Internet applications traffic at first priority.
	FTP The router handles at first priority the traffic of downloading/uploading data to/from the FTP server.
	Voip/Video Streaming The router handles the audio/video traffic at first priority.

3. Click **Save** to save the configuration settings.

Upgrading the firmware



Note: Download the latest firmware from the ASUS website at <http://www.asus.com>

To upgrade the firmware:

1. Click **Advanced Setting** from the navigation menu at the left side of your screen.

The screenshot shows the ASUS RT-N13U web GUI. The top header includes the ASUS logo, SSID: ASUS, Firmware Version: 1.00.4, Operation Mode: Router, Language: English, and buttons for Logout and Reboot. The left navigation menu has several items: Network Map, Operation Mode, AiDisk, EzQoS Bandwidth Management, **Advanced Setting** (highlighted with a red circle), Wireless, LAN, WAN, USB Application, Firewall, Administration, and System Log. The main content area is divided into several sections: Wireless, LAN, WAN, USB Application, Firewall, Administration, and System Log, each with a brief description and a list of sub-options.

Wireless	LAN	WAN	USB Application
Configure your wireless connection, security, and other advanced parameters.	Configure LAN, dhcp, and route settings.	Configure the Internet connection, QoS, and Server setting.	Configure the USB device and share your files in LAN or WAN.
<ul style="list-style-type: none">GeneralWPSBridgeWireless MAC FilterRADIUS SettingProfessional	<ul style="list-style-type: none">LAN IPDHCP ServerRoute	<ul style="list-style-type: none">Internet ConnectionQoSPort TriggerVirtual ServerDMZDDNS	<ul style="list-style-type: none">FTP ShareMiscellaneous setting
Firewall	Administration	System Log	
Configure the firewall and filter mechanisms to protect your network.	Configure the system and upgrade the firmware of RT-N13U.	Monitor the status and various system logs.	
<ul style="list-style-type: none">GeneralURL FilterMAC FilterLAN to WAN Filter	<ul style="list-style-type: none">SystemFirmware UpgradeRestore/Save/Upload Setting	<ul style="list-style-type: none">General LogDHCP LeasesWireless LogPort ForwardingRouting Table	

2. Under the **Administration** menu, click **Firmware Upgrade**.
3. In the **New Firmware File** field, click **Browse** to locate the new firmware on your computer.
4. Click **Upload**. The uploading process takes about three minutes.

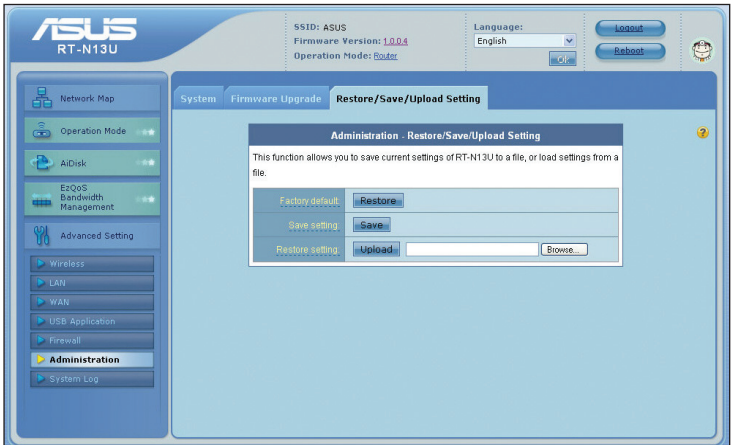


Note: If the upgrade process fails, the wireless router automatically enters the rescue mode and the power LED indicator at the front panel flashes slowly. To recover or restore the system, use the Firmware Restoration utility. For more details on this utility, refer to the section **Firmware Restoration** in Chapter 5 of this user manual.

Restoring/Saving/Uploading settings

To restore/save/upload the settings:

1. Click **Advanced Setting** from the navigation menu at the left side of your screen.
2. Under the **Administration** menu, click **Restore/Save/Upload Setting**.



3. Select the tasks that you want to do:
 - To restore to the default factory settings, click **Restore**, and click **OK** in the confirmation message.
 - To save the current system settings, click **Save**, and click **Save** in the file download window to save the system file in your preferred path.
 - To restore previous system settings, click **Browse** to locate the system file that you want to restore, then click **Upload**.

Using the USB application

The ASUS Wireless Router provides two USB 2.0 ports for connecting USB devices such as a USB storage device and USB printer, to allow you to monitor the working environment, share files, and printer with clients in your network.




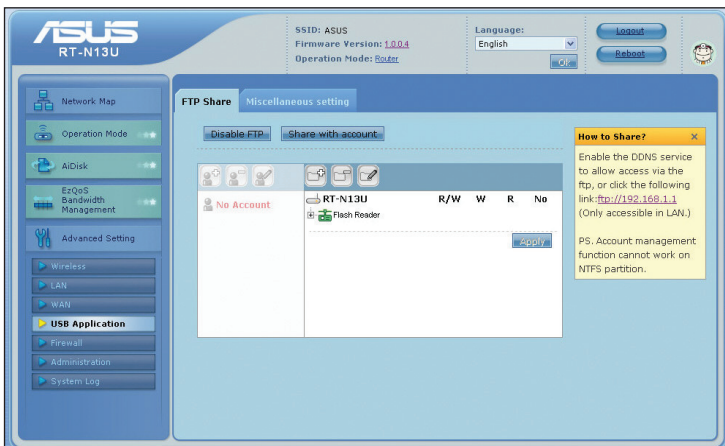
Note: To use this feature, you need to plug a USB storage device, such as a USB hard disk or USB flash drive, to the USB 2.0 port on the rear panel of your wireless router. Ensure that the USB storage device is formatted and partitioned properly. Refer to the ASUS website at www.asus.com for the HD file system support table.

Creating a user account

You need to create user accounts before you can share the files or data in the USB storage device.

To create a user account:

1. Click **Advanced Setting** > **USB Application** from the navigation menu at the left side of your screen.
2. Click **Share with account**, and click **OK** to enable the sharing feature.
3. Click the Add account  icon.



4. In the **Account** and **Password** fields, key in the name and password of the client/computer in your network. Retype the password to confirm. Click **Add** to add the account to the list.

Setting up an FTP site

The ASUS Wireless Router enables you to share files from your USB storage device with computers in LAN or through the Internet.

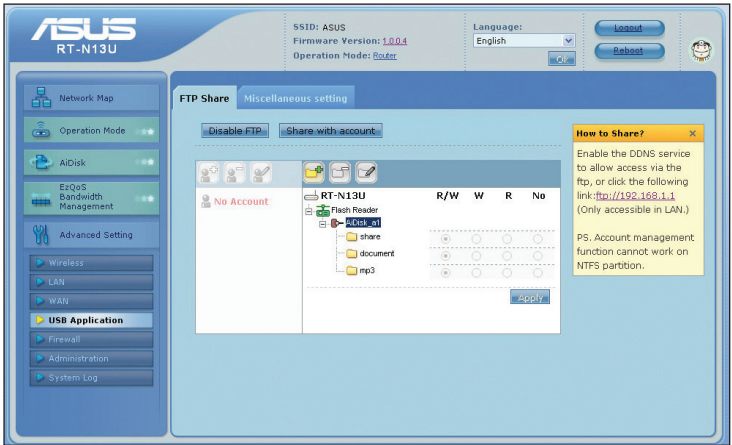


Notes:

- To use this feature, you need to insert a USB storage device, such as a USB hard disk or USB flash drive, to the USB2.0 port on the rear panel of your wireless router. Ensure that the USB storage device is formatted and partitioned properly. Refer to the ASUS website at www.asus.com for the HD file system support table.
- To access the FTP, you may either enable the DDNS service or key in the ftp link **ftp://192.168.1.1** from any computer in LAN.

To set up an FTP site:

1. Click **Advanced Setting > USB Application** from the navigation menu at the left side of your screen.
2. From the **FTP Share** tab, select the account that you want to assign access rights to.



3. From the list of file folders, select the type of access rights that you want to assign for specific file folders:
 - **R/W**: Select this option to assign read/write access for a specific file folder.
 - **W**: Select this option to assign write only access for a specific file folder.
 - **R**: Select this option to assign read only access for a specific file folder.
 - **No**: Select this option if you do not want to share a specific file folder.
4. Click **Apply** to apply the changes.
5. From any LAN computer, key in **ftp://192.168.1.1** on a web browser.