

# Connecting a USB printer

Connect a compatible USB printer to the USB 2.0 port of the ASUS Wireless Router and share the USB printer with your LAN clients.



**Note:** Visit the ASUS Website at <http://www.asus.com> for compatible printer vendor and models.

## To connect a USB printer:

1. Plug your USB printer to the USB 2.0 port on the rear panel of the wireless router.
2. Install the printer driver for your computer's operating system.



**Note:** Refer to the section below to install the printer on Windows® XP.

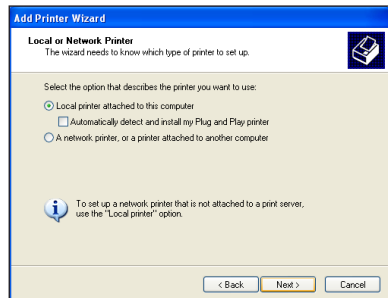
## Installing the printer on Windows® XP

### To install the printer on Windows® XP:

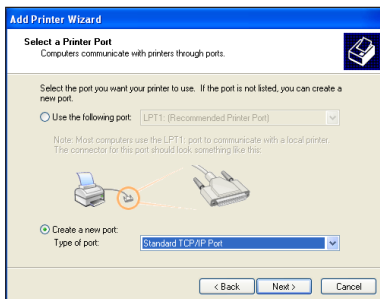
1. Run the Add Printer Wizard from **Start > Printers and Faxes > Add a printer.**



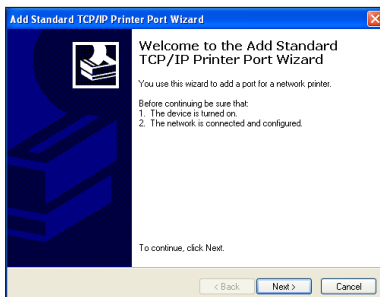
2. Select **Local printer attached to this computer** and click **Next.**



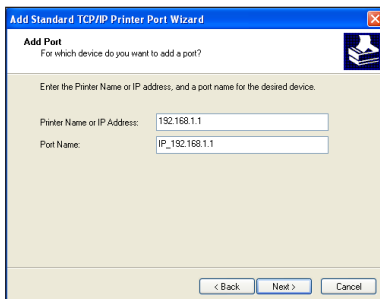
3. Select **Create a new port** and set Type of port to **Standard TCP/IP Port**, then click **Next**.



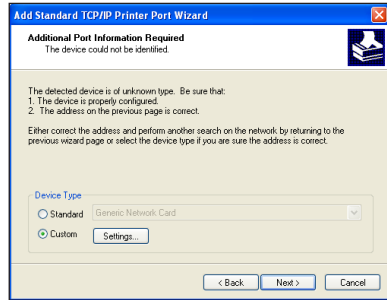
4. Click **Next** to set up the TCP/IP port for accessing the network printer.



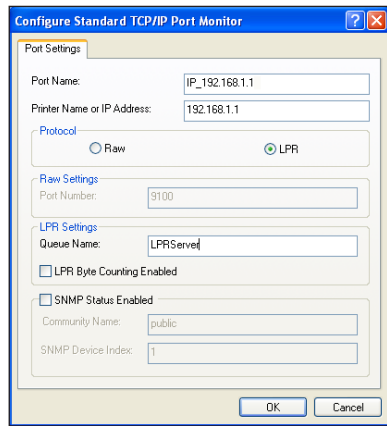
5. Key in the IP address of the wireless router in the **Printer Name** of **IP Address** field and click **Next**.



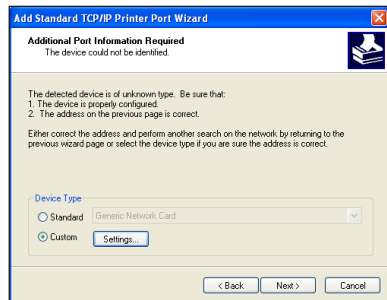
6. Select **Custom** and click **Settings...**



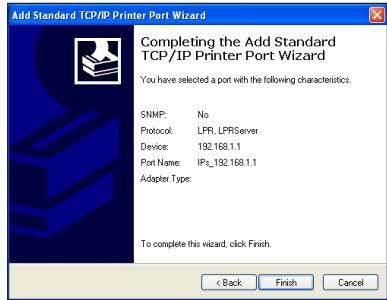
7. Set **Protocol** to **LPR** and type **LPRServer** in **Queue Name** field. Click **Next** to continue.



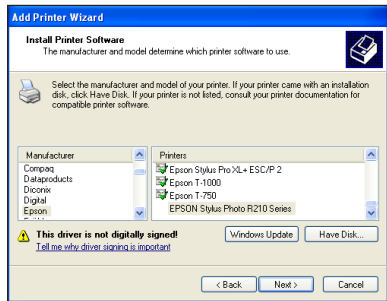
8. Press **Next** to finish the standard TCP/IP port setting.



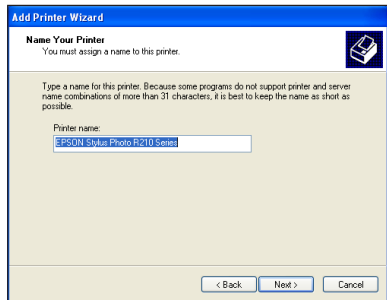
9. Press **Finish** to complete the settings and return to the Add Printer Wizard.



10. Install printer driver from the vendor-model list. If your printer is not in the list, click **Have Disk** to manually assign the location of driver.



11. Click **Next** to accept the default name for the printer.





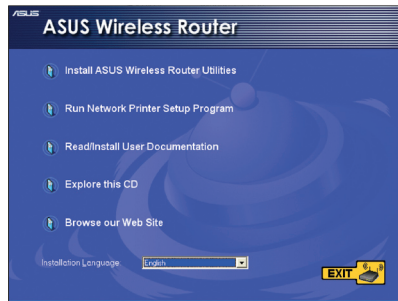
# 5 Installing the utilities

## Installing the utilities

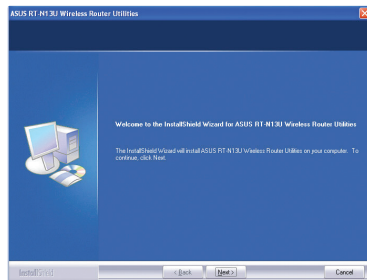
The support CD contains the utilities for configuring the ASUS Wireless Router. To install the ASUS WLAN Utilities in Microsoft® Windows, insert the support CD in the CD drive. If Autorun is disabled, run **setup.exe** from the root directory of the support CD.

### To install the utilities:

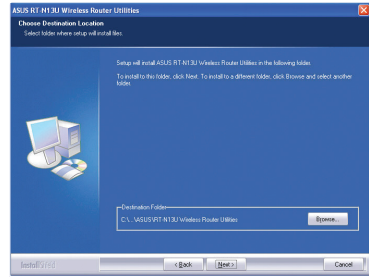
1. Click **Install...Utilities**.



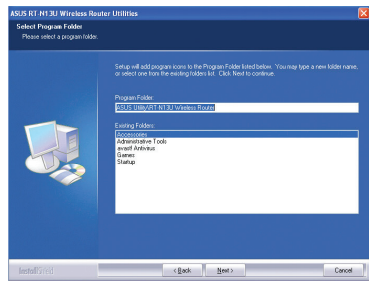
2. Click **Next**.



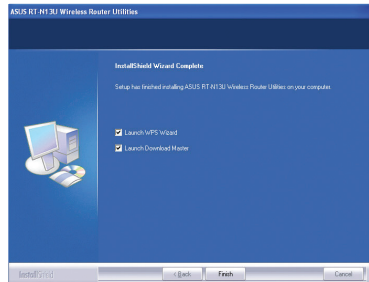
3. Click **Next** to accept the default destination folder or click **Browse** to specify another path.



4. Click **Next** to accept the default program folder or enter another name.



5. Click **Finish** when setup is completed.

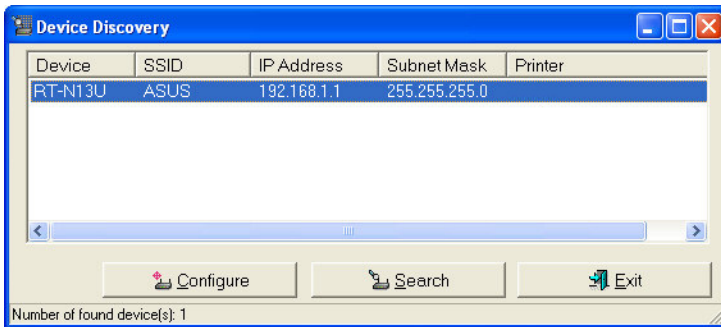


# Device Discovery

Device Discovery is an ASUS WLAN utility that detects an ASUS wireless router device, and enables you to configure the device.

## To launch the Device Discovery utility:

- From your computer's desktop, click **Start > All Programs > ASUS Utility > RT-N13U Wireless Router > Device Discovery**.

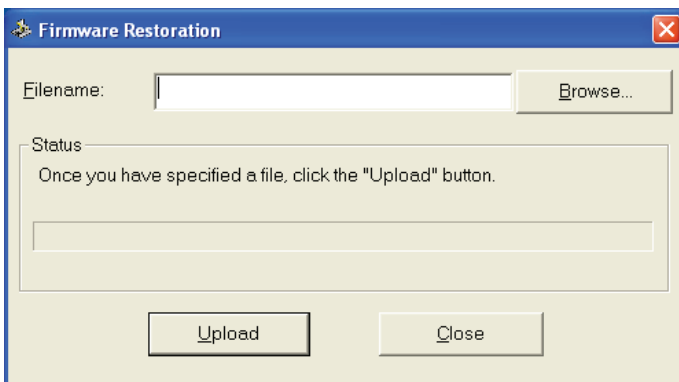


# Firmware Restoration

Firmware Restoration is a utility that searches for an ASUS Wireless Router that failed during its firmware upgrading process, then restores or re-uploads the firmware that you specify. The process takes about three to four minutes.

## To launch the Firmware Restoration utility:

- From your computer's desktop, click **Start > All Programs > ASUS Utility > RT-N13U Wireless Router > Firmware Restoration**.



**Note:** This is not a firmware upgrade utility and cannot be used on a working ASUS Wireless Router. Normal firmware upgrades must be done through the web interface. Refer to **Chapter 4: Configuring via the web GUI** for more details.



# WPS Wizard

WPS (Wi-Fi Protected Setup) allows you to set up a secure and protected wireless network easily.

## Using WPS Wizard

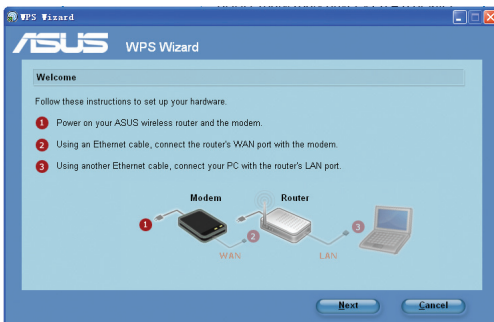


- Ensure that you use a wireless LAN dapter with WPS function.
- Windows® operating systems and wireless LAN cards/adapters that support WPS:

OS Support	Wireless Adapter Support
Vista 32/64	Intel wireless LAN card
	ASUS 167gv2 driver v3.0.6.0 or later
	ASUS 160N/130N driver v2.0.0.0 or later
XP SP2	Intel wireless LAN card
	ASUS 167gv2 driver v1.2.2.0 or later
	ASUS 160N/130N driver v1.0.4.0 or later
XP SP1 and 2000	ASUS LAN card with ASUS WLAN Utility
	ASUS 167gv2 driver v1.2.2.0 or later
	ASUS 160N/130N driver v1.0.4.0 or later

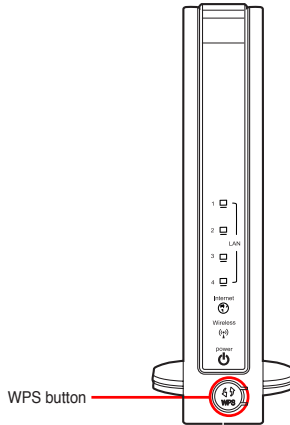
### To use WPS Wizard:

1. Follow the onscreen instructions to set up your hardware. When done, click **Next**.



**Note:** Use the WPS Wizard with one wireless client at a time. If the wireless client cannot discover the wireless router, shorten the distance between the client and the router.

2. Push the WPS button on the front panel of the wireless router for more than five seconds.



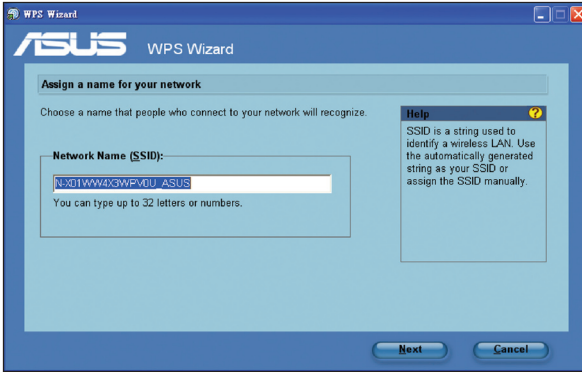
3. On the WPS Wizard, click **Next** to continue.



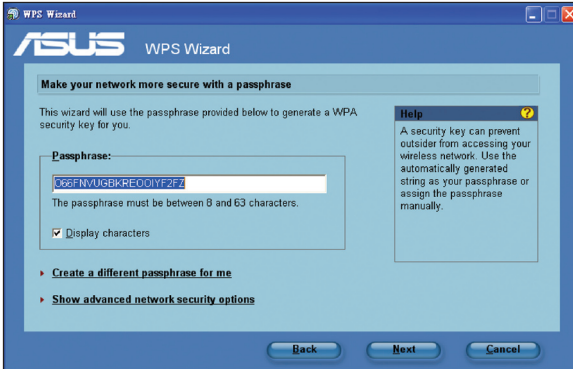
**Notes:**

- When running WPS, the Internet connection pauses briefly then reestablishes the connection.
- If the WPS button is pushed without running the WPS Wizard, the PWR indicator flashes and Internet connection pauses briefly and then reestablishes the connection.

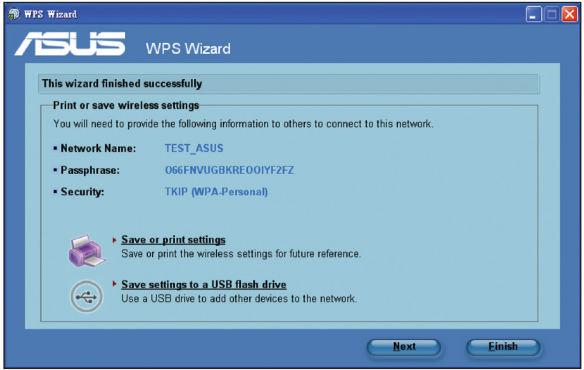
4. Assign a name to your network, then click **Next**.



5. Use the auto-generated passphrase as your network's security key or manually assign a passphrase containing between 8 and 63 characters. Click **Next**.



6. Installation is completed. Click **Save or print settings** for future reference or **Save settings to a USB flash drive** to add other devices to the network. Click **Next** to connect to the Internet.



**Note:** For more details on adding devices to the network using a USB flash drive, refer to the section **Adding network devices using a USB flash drive** on the next page.

7. You have connected to the wireless router. If you want to configure the Internet settings, click **Setup**. Click **Finish** to close the WPS Wizard.

