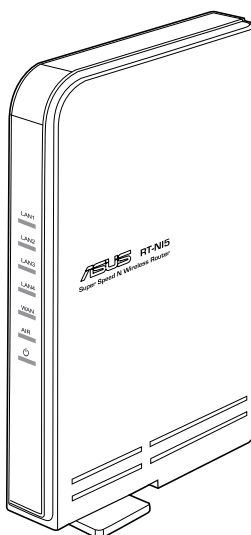




RT-N15 SuperSpeed N Wireless Router



User Manual

Manufacturer Contact Information

ASUSTeK COMPUTER INC. (Asia-Pacific)

Company address: 15 Li-Te Road, Beitou, Taipei 11259

General (tel): +886-2-2894-3447 Web site address: www.asus.com.tw

General (fax): +886-2-2894-7798 General email: info@asus.com.tw

ASUS COMPUTER INTERNATIONAL (America)

Company address: 44370 Nobel Drive, Fremont, CA 94538, USA

General (fax): +1-510-608-4555 Web site address: usa.asus.com

Technical support

General support: +1-502-995-0883 Support (fax): +1-502-933-8713

Online support: <http://vip.asus.com/eservice/techserv.aspx>

ASUS COMPUTER GmbH (Germany & Austria)

Company address: Harkort Str. 25, D-40880 Ratingen, Germany

General (tel): +49-2102-95990 Web site address: www.asus.com.de

General (fax): +49-2102-959911 Online contact: www.asus.com.de/sales

Technical support

Components: +49-2102-95990 Online support: www.asus.com.de/support

Notebook: +49-2102-959910 Support (fax): +49-2102-959911



Table of contents

1. Package contents	2
2. Connecting ADSL modem and wireless router	2
1) Cable connection	2
2) Status indicators	3
3. Getting started	4
1) Wired connection	4
2) Wireless Connection	4
3) Setting IP address for wired or wireless client	4
5) Quick setup	6
4. Wireless router features	11
1) Choosing an appropriate operation mode	11
2) Setting up wireless encryption	12
3) Setting up virtual server in your LAN	13
4) Setting up virtual DMZ in your LAN	14
5) Setting up DDNS	14
6) Setting up Bandwidth Management	18
5. Setting up using ASUS utility	20
1) Utility Installation for RT-N15	20
2) WPS utility	21
6. Configure RT-N15 under Vista OS	23
1) Configuring the device	23
2) Setting up the network sharing center	28
7. Troubleshooting	35
8. Appendix	37

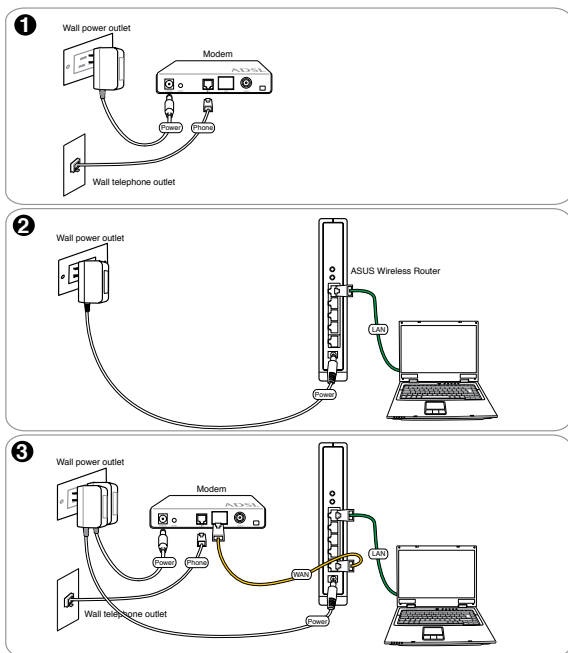


1. Package contents

- RT-N15 wireless router x 1
- Power adapter x 1
- Utility CD x 1
- RJ45 cable x 1
- Quick Start Guide x 1

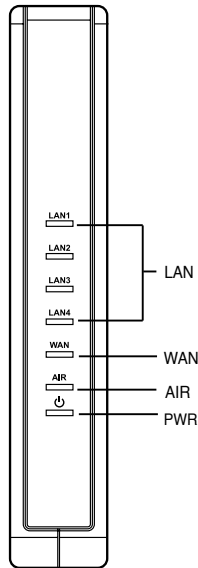
2. Connecting ADSL modem and wireless router

1) Cable connection





2) Status indicators



PWR (Power)

Off	No power
On	System ready
Flashing-slow	Firmware upgrade failed
Flashing-quick	EZsetup processing

AIR (Wireless Network)

Off	No power
On	Wireless system ready
Flashing	Transmitting or receiving data (wireless)

WAN (Wide Area Network)

Off	No power or no physical connection
On	Has physical connection to an Ethernet network
Flashing	Transmitting or receiving data (through Ethernet cable)

LAN 1-4 (Local Area Network)

Off	No power or no physical connection
On	Has physical connection to an Ethernet network
Flashing	Transmitting or receiving data (through Ethernet cable)



3. Getting started

The ASUS RT-N15 Wireless Router can meet various working scenarios with proper configuration. The default settings of the wireless router may need change so as to meet your individual needs. Therefore, before using the ASUS Wireless Router, check the basic settings to make sure they all work in your environment.

ASUS provides a utility named WPS for fast wireless configuration. If you would like to use EZSetup for your wireless network configuration, refer to chapter 5 for details.



Note: Wired connection for initial configuration is recommended to avoid possible setup problems due to wireless uncertainty.

1) Wired connection

The RT-N15 Wireless Router is supplied with an Ethernet cable in the package. The wireless router has an integrated auto-crossover function. Thus, you can either use straight-through or crossover cable for wired connection. Plug one end of the cable to the LAN port on the rear panel of the router and the other end to the Ethernet port on your PC.

2) Wireless Connection

For establishing wireless connection, you need an IEEE 802.11b/g compatible WLAN card. Refer to your wireless adapter user manual for wireless connection procedures. By default, the SSID of ASUS Wireless Router is "default" (in lower case), encryption is disabled and open system authentication is used.

3) Setting IP address for wired or wireless client

To access the RT-N15 Wireless Router, you must have correct TCP/IP settings on your wired or wireless clients. Set the IP addresses of the clients within the same subnet of RT-N15.

Getting an IP address automatically

The RT-N15 Wireless Router integrates DHCP server functions, thus, your PC gets an IP address automatically.

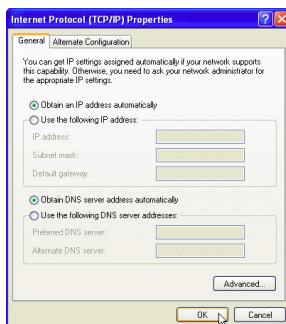


Note: Before rebooting your PC, switch ON the wireless router and make sure the router is in ready state.

Setting up the IP address manually

To manually set the IP address, you need to know the default settings of the wireless router:

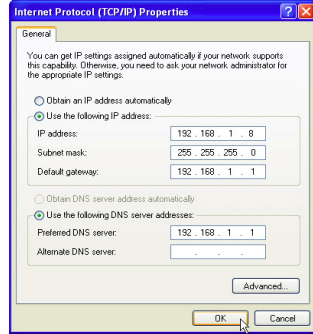
- IP address 192.168.1.1
- Subnet Mask 255.255.255.0





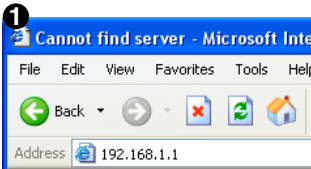
To set up the connection with a manually assigned IP address, the address of your PC and the wireless router must be within the same subnet:

- IP address: 192.168.1.xxx (xxx can be any number between 2 and 254. Make sure the IP address is not used by other device)
- Subnet Mask: 255.255.255.0 (same as WL-500GU/GC)
- Gateway: 192.168.1.1 (IP address of WL-500GU/GC)
- DNS: 192.168.1.1 (WL-500GU/GC), or assign a known DNS server in your network.



4) Configuring the wireless router

Follow the steps below to enter the Web configuration interface of RT-N15.

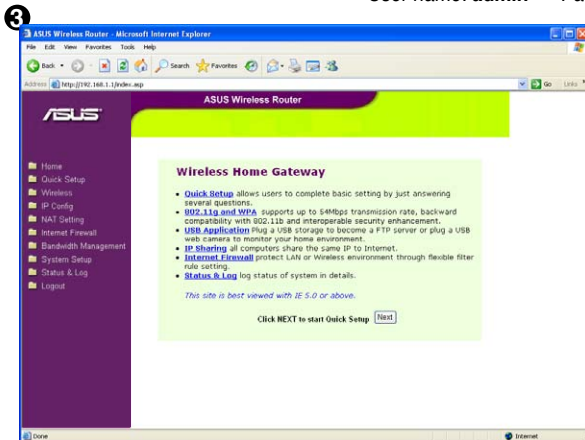


Enter the following address in your web browser: <http://192.168.1.1>



Defaults

User name: **admin** Password: **admin**



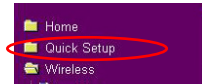
After logging in, you can see the ASUS Wireless Router home page.

The homepage displays quick links to configure the main features of the wireless router.



5) Quick setup

To start quick setup, click **Next** to enter the "Quick Setup" page. Follow the instructions to setup the ASUS Wireless Router.



1. Select your time zone and click **Next**.

2. ASUS wireless router supports five types of ISP services: cable, PPPoE, PPTP, static WAN IP, and Telstra BigPond. Select your connection type and click **Next** to continue.

Cable or dynamic IP user

If you are using services provided by cable ISP, select **Cable Modem or other connection that gets IP automatically**. If your ISP provides you with the hostname, the MAC address, and the heartbeat server address, fill these information into the boxes on the setting page; if not, click **Next** to skip this step.

PPPoE user

If you use PPPoE service, select **ADSL connection that requires username and password**. It is known as PPPoE. You need to input the username and password provided by your ISP. Click **Next** to continue.



PPTP user

If you are using PPTP services, select **ADSL connection that requires username, password and IP address**. Fill in the username, password and IP address provided by your ISP into the fields. Click **Next** to continue.

Set Your Account to ISP	
If you apply an account with dynamic IP, you must get user account and password from your ISP. Please fill this data into the following fields carefully.	
User Name:	hwt036@adsl-comfort
Password:	*****
<input type="button" value="Prev"/> <input type="button" value="Next"/>	

WAN IP Setting	
Fill TCP/IP setting for RT-N15 to connect to Internet through WAN port.	
Get IP automatically?	<input type="radio"/> Yes <input checked="" type="radio"/> No
IP Address:	10.1.1.1
Subnet Mask:	255.0.0.0
Default Gateway:	219.31.111.1
Get DNS Server automatically?	<input type="radio"/> Yes <input checked="" type="radio"/> No
DNS Server 1:	168.95.1.1
DNS Server 2:	
<input type="button" value="Prev"/> <input type="button" value="Next"/>	

Static IP user

If you are using ADSL or other connection type that uses static IP address, select **ADSL or other connection type that uses static IP address**. Input the IP address, subnet mask, and default gateway provided by your ISP. You can specify DNS servers, or get DNS information automatically.

WAN IP Setting	
Fill TCP/IP setting for RT-N15 to connect to Internet through WAN port.	
Get IP automatically?	<input type="radio"/> Yes <input checked="" type="radio"/> No
IP Address:	10.1.1.1
Subnet Mask:	255.0.0.0
Default Gateway:	219.31.111.1
Get DNS Server automatically?	<input type="radio"/> Yes <input checked="" type="radio"/> No
DNS Server 1:	168.95.1.1
DNS Server 2:	
<input type="button" value="Prev"/> <input type="button" value="Next"/>	

- To set up your wireless interface, specify an SSID (Service Set Identifier), which is a unique identifier attached to packets sent over WLAN. This identifier emulates a password when a device attempts to communicate with your wireless router via WLAN.

Configure Wireless Interface	
First step to set your wireless interface is to give it a name, called SSID. In addition, if you would like to protect transmitted data, please select the Security Level and assign a password for authentication and data transmission if it is required.	
SSID:	RT-N15
Security Level:	Low(Open System)
WEP Key Type:	Medium(WEP-64bit)
Passphrase:	
WEP Key 1:	
WEP Key 2:	
WEP Key 3:	
WEP Key 4:	
Key Index:	1
<input type="button" value="Prev"/> <input type="button" value="Finish"/>	

If you want to protect transmitted data, select a **Security Level** to enable encryption methods.

Medium: Only users with the same WEP key settings can connect to your wireless router and transmit data using 64bits or 128bits WEP key encryption.

High: Only users with the same WPA pre-shared key settings can connect to your wireless router and transmit data using TKIP encryption.



- Input four sets of WEP keys in the WEP Key fields (10 hexadecimal digits for WEP 64bits, 26 hexadecimal digits for WEP 128bits). You can also let the system generate the keys by inputting a Passphrase. Record the Passphrase and the WEP keys in your notebook, then click **Finish**.

For example, if we select WEP 64bits encryption mode and input 11111 as the Passphrase, the WEP Keys are generated automatically.

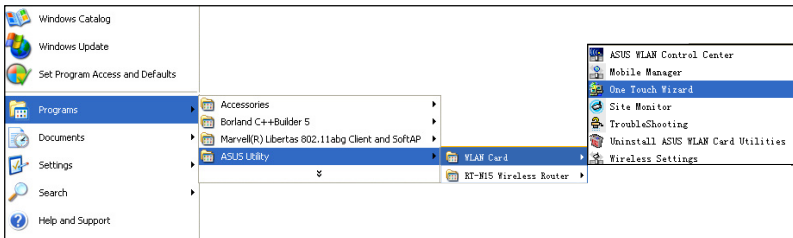
- Click **Save&Restart** to restart the wireless router and activate the new settings.
- To connect the wireless router from a wireless client, you can use Windows® Wireless Zero Configuration service to set up the connection. If you use ASUS Wireless Card on your computer, you can use the One Touch Wizard utility supplied in WLAN Card support CD for wireless connection.

Configure Wireless interface	
First step to set your wireless interface is to give it a name, called SSID. In addition, if you would like to protect transmitted data, please select the Security Level and assign a password for authentication and data transmission if it is required.	
SSID:	RT-N15
Security Level:	Medium(WEP-64bits) ▼
WEP Key Type:	HEX ▼
Passphrase:	6430263
WEP Key 1:	91781950034
WEP Key 2:	2730CC6E66
WEP Key 3:	EAD6B3D0034
WEP Key 4:	5F3CB7C44
Key Index:	1 ▼
<input type="button" value="Prev"/> <input type="button" value="Finish"/>	

Save & Restart
You have finished the basic setting. You can just press Save&Restart button to apply your setting or perform other advanced settings.
<input type="button" value="Save&Restart"/>

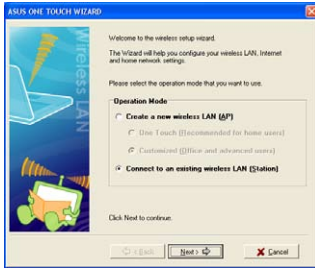
Configuring ASUS WLAN Card with One Touch Wizard

If you have installed ASUS wireless card together with its utilities and drives on your PC, click **Start -> All Programs -> ASUS Utility-> WLAN Card -> One Touch Wizard** to launch the One Touch Wizard utility.

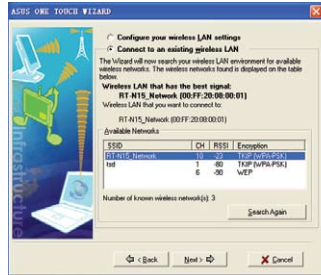




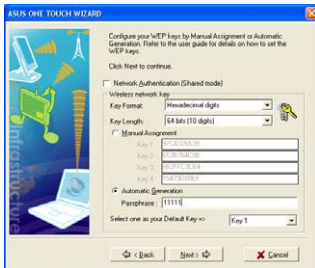
- 1) Select **Connect to an existing wireless LAN (Station)** radio button and click **Next** to continue.



- 2) One Touch Wizard searches and displays the available APs in the **Available Networks** list. Select RT-N15 and press **Next** to continue.



- 3) Set the authentication and encryption of your WLAN card the same with those at RT-N15. In the previous steps the **Key Length** is **64 bits**, **Passphrase** is **11111**. Click **Next** to continue.



- 4) It takes several seconds for the wireless card to associate with RT-N15. Press **Next** to setup TCP/IP for your WLAN Card.



- 5) Setup the IP address of the WLAN Card according to your network condition. After the setup is complete, click **Finish** to exit the One Touch Wizard.

