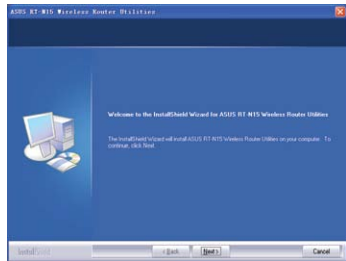
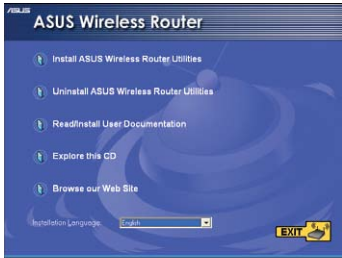




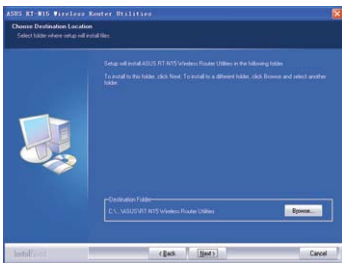
5. Setting up using ASUS utility

1) Utility Installation for RT-N15

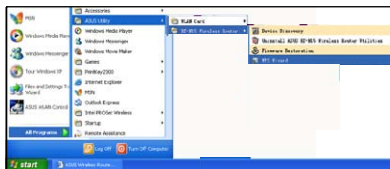
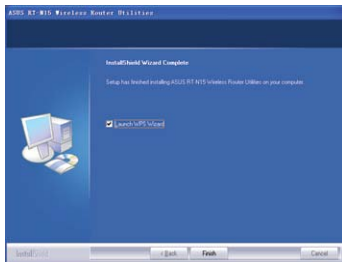
1. Click **Install ASUS Wireless Router Utilities** to run the setup installation program.
2. Click **Next** to continue.



3. Click **Next** to install the utility in the designated location.
4. Select a program folder and click **Next**.



5. Press **Finish** to quit the installation program.
6. Open the **WPS Wizard**.



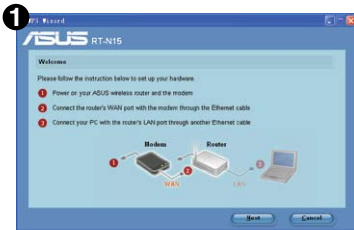


2) WPS utility



- 1) To use WPS, you should use a wireless router and a wireless LAN card with WPS function.
- 2) To use WPS, we recommend using an ASUS wireless adapter such as WL-169gE.
- 3) Operating systems and wireless adapters that support WPS:

OS Support	Wireless Adapter Support
Vista 32/64	Intel wireless LAN card
	ASUS 167gV2 driver v3.0.6.0 or later ASUS 160N/130N driver v2.0.0.0 or later
XP SP2	Intel wireless LAN card
	ASUS 167gV2 driver v1.2.2.0 or later ASUS 160N/130N driver v1.0.4.0 or later
XP SP1 and 2000	ASUS LAN card with ASUS WLAN Utility
	ASUS 167gV2 driver v1.2.2.0 or later
	ASUS 160N/130N driver v1.0.4.0 or later

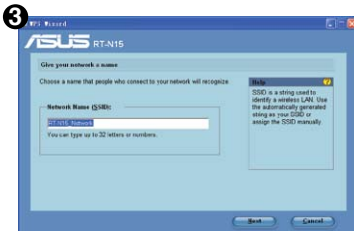


Follow the instructions to set up your hardware. When done, click **Next**.

Note: Use WPS Wizard with one wireless client at a time. If the wireless client computer cannot discover the wireless router while in WPS mode, please shorten the distance between the client and the router.



Click the **WPS** button in the utility until its power LED is blinking. When done, click **Next** to continue.



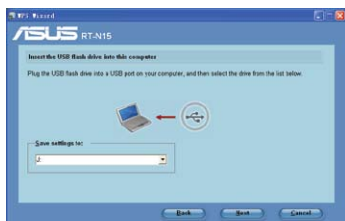
Wireless settings, including Network name and passphrase, are generated automatically. You can modify these settings manually. Note if your wireless router is configured before, select **Preserve original wireless router settings** to use the current value. Click **Next** to continue.



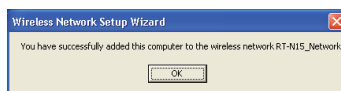
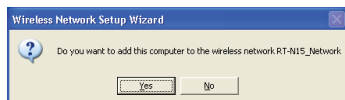
Setup is complete, press **Save or print Settings**, or **Save settings to a USB drive** button for future reference. Click **Next** to connect to Internet.

If you need to use a USB drive to add other devices to the network. Click **Save settings to a USB flash drive**.

- 1) Plug a USB flash drive into a USB port on your computer, and then select the drive from the dropdown list. When done, click **Next** to continue.
- 2) Remove the USB flash drive from this computer, and then plug to another computer that you want to add to the wireless network.



- 3) Locate the **SetupWireless.exe** from the USB drive, and double-click to run it. Click **Yes** to add this computer to the wireless network.
- 4) Click **OK** to exit the **Wireless Network Setup Wizard**.



You have connected to the wireless router. If you need to configure Internet settings, click **Setup** to open web browser. Click **Finish** to exit **WPS Wizard**.



6. Configure RT-N15 under Vista OS

The Windows Simple Config function, which is preinstalled in the ASUS RT-N15, enables the device to be configured via WCN Net process of Windows Vista.

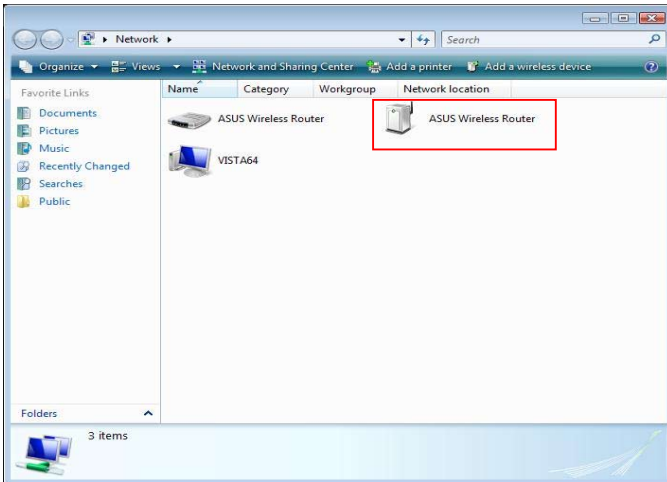


Note: The WCN Net process of Windows Vista can only discover the device when it is not configured and is in the default settings state. If the device is configured, you have to set up the device by WEB or EZsetup. You can also push the Reset button and then begin WCN-NET setup.

1) Configuring the device

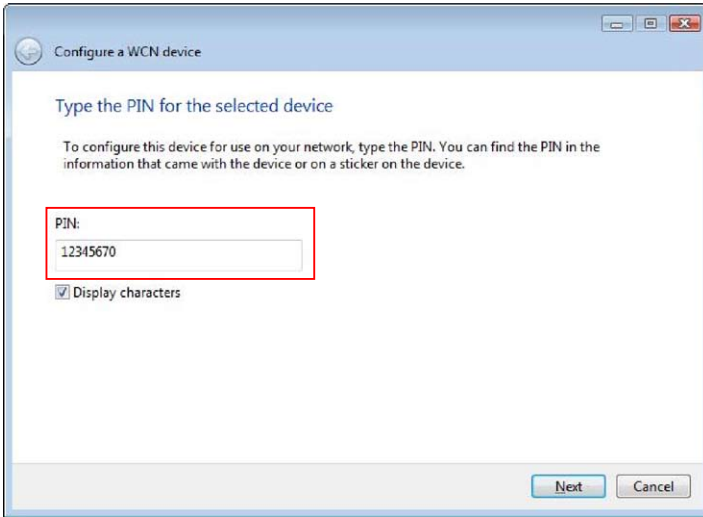
Follow the steps below to configure the device using WCN-Net process of Windows Vista:

1. Connect the device to your PC and power on it.
2. Click **Start > Network** from the Vista desktop. The Network screen appears.
3. Double-click **ASUS Wireless Router**.

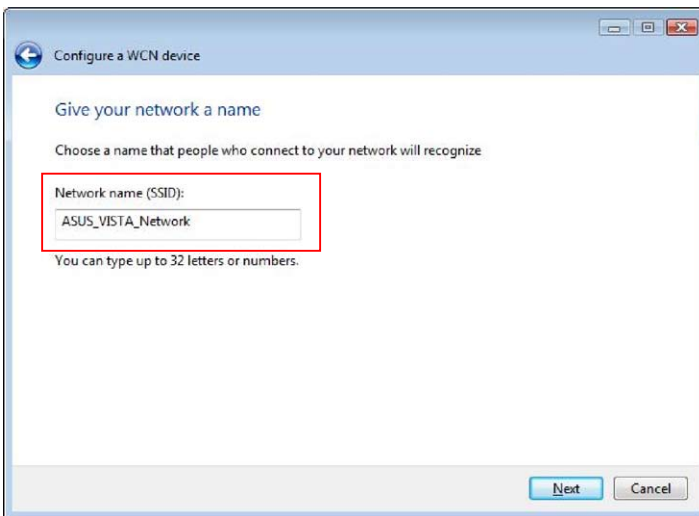




4. A screen prompts you to enter the PIN, which is located on the sticker posted on the device. Enter the PIN in the **PIN** box, then click **Next**.



5. Give the network a name and type it in the **Network name** box, then click **Next**.





6. A Passphrase is generated for WPA security for the network. Click **Next** from this screen.

The screenshot shows a window titled "Configure a WCN device". The main heading is "Help make your network more secure with a passphrase". Below this, it states: "Windows will use the [passphrase](#) provided below to generate a [WPA](#) security key for you. The first time that people connect to this network, they will need the passphrase." A text box labeled "Passphrase:" contains the generated passphrase "NGo4X6Lqv4LCE1JZ6aQ6". Below the text box, it says "The passphrase must be at least 8 characters and cannot begin or end with a space." There is a checked checkbox labeled "Display characters". At the bottom of the window, there are two buttons: "Next" and "Cancel". A red box highlights two links: "Create a different passphrase for me" and "Show advanced network security options".

If you want to create a different passphrase, click **create a different passphrase for me**. If you want to use security method other than WPA-Personal, click **Show advanced network security options**.

The screens for **Create a different passphrase** and **Security methods** are shown in the next page.



Create a different passphrase

Configure a WCN device

Choose advanced network security options

We recommend using Wi-Fi Protected Access 2 (WPA2-Personal) because it provides better security, but it is not supported by devices made before 2001.

Security method:
WPA-Personal

Security key or passphrase:
M8d8K2IjR4t3D4hafUvk1U

Display characters

[Create a different security key or passphrase for me](#)

Next Cancel

Four security methods

Configure a WCN device

Choose advanced network security options

We recommend using Wi-Fi Protected Access 2 (WPA2-Personal) because it provides better security, but it is not supported by devices made before 2001.

Security method:
WPA-Personal
WPA2-Personal
WEP
No Security

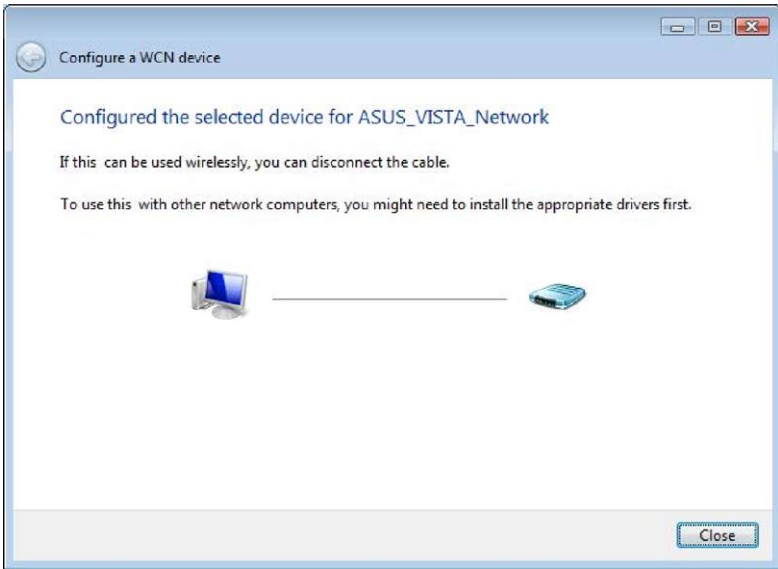
Display characters

[Create a different security key or passphrase for me](#)

Next Cancel



7. Click **Next** from the above screens after the configuration is completed. The complete configuration screen appears as shown below. Click **Close** to finish the process and exit.

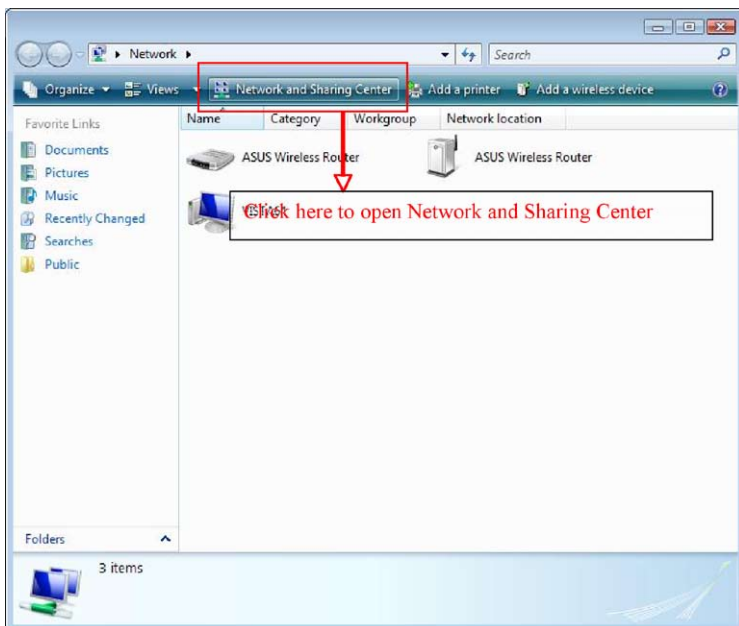




2) Setting up the network sharing center

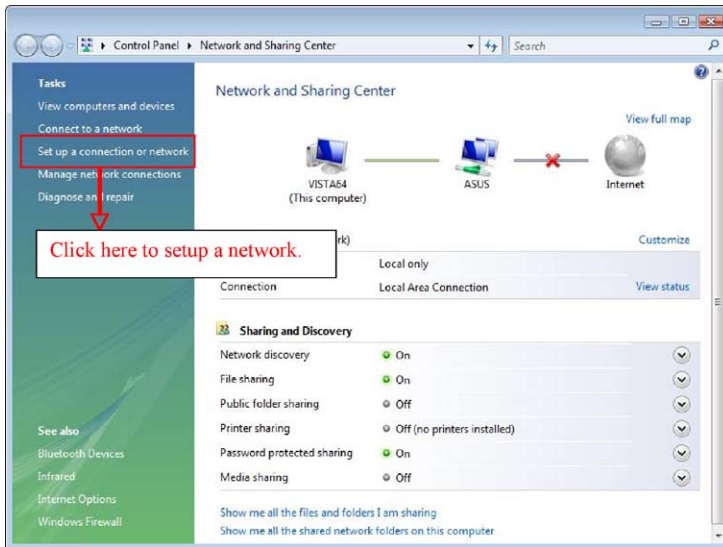
Follow the steps below to set up a sharing center to allow the network users to share printer, file and media.

1. Connect the device to your PC and power it on.
2. Click **Network and Sharing Center** in the navigation bar. The **Network and Sharing Center** screen appears.

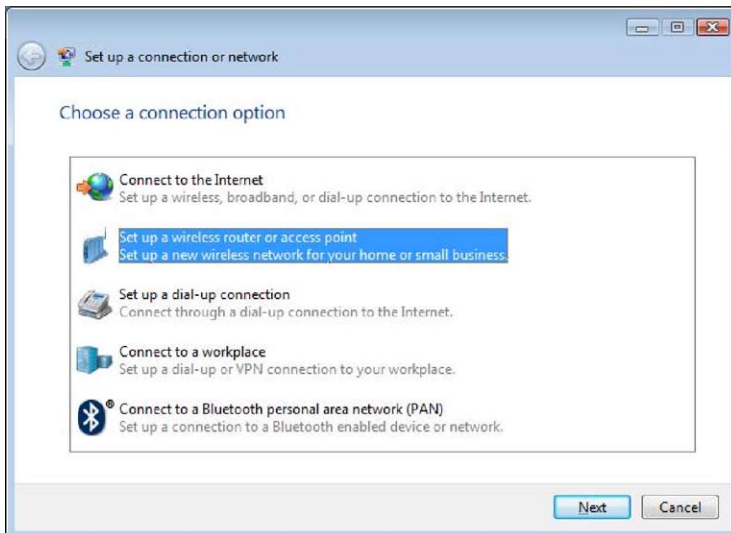




3. Click **Set up a wireless router or network**.

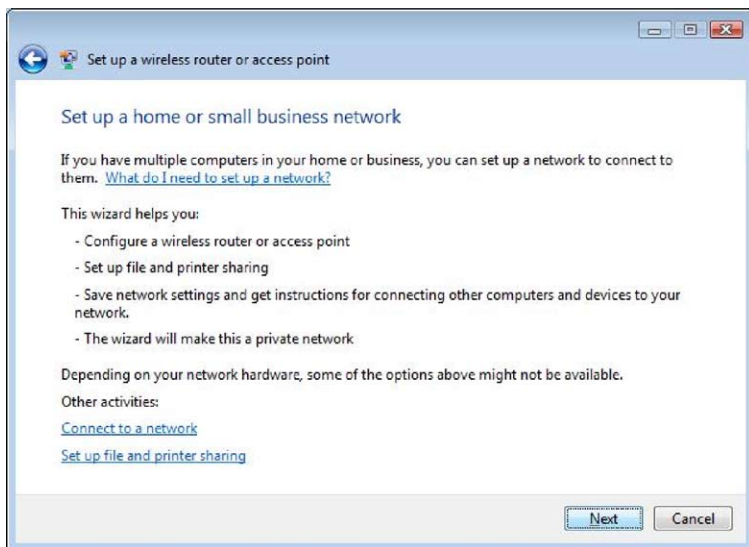


4. Choose **Set up a wireless router or access point**, then click **Next**.

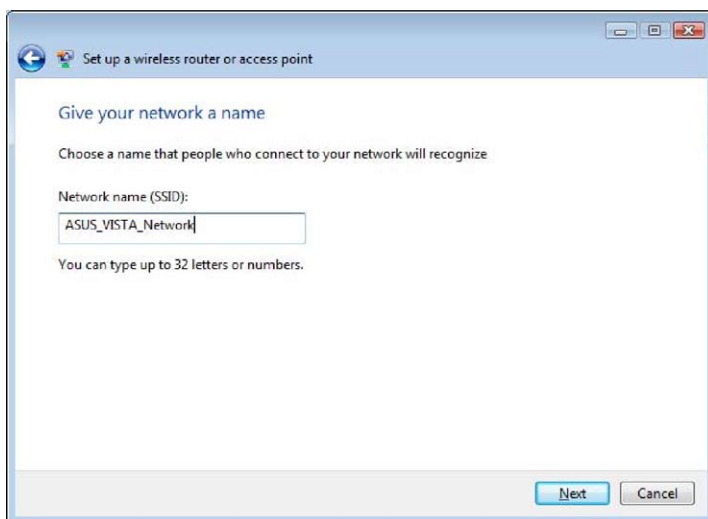




5. Click **Next**.

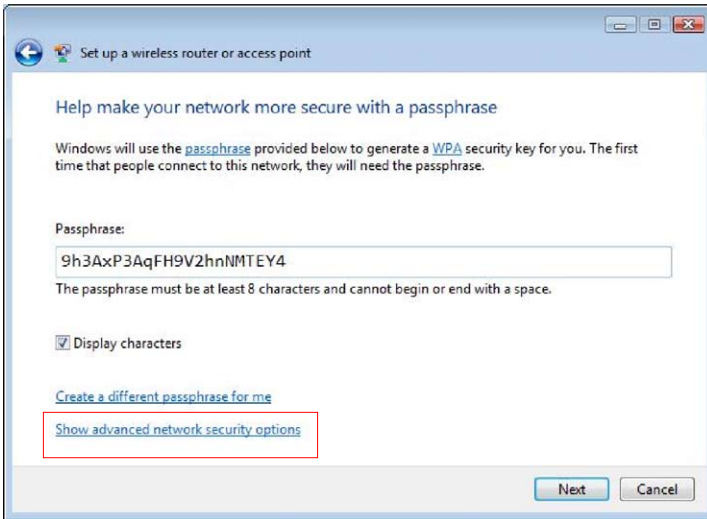


6. In the screen that appears, type a network name in the **Network name** box, then click **Next**. A passphrase is generated for the WPA security.





- Click **Next**. If you want to use security methods other than WPA-Personal, click **Show advanced network security options**.

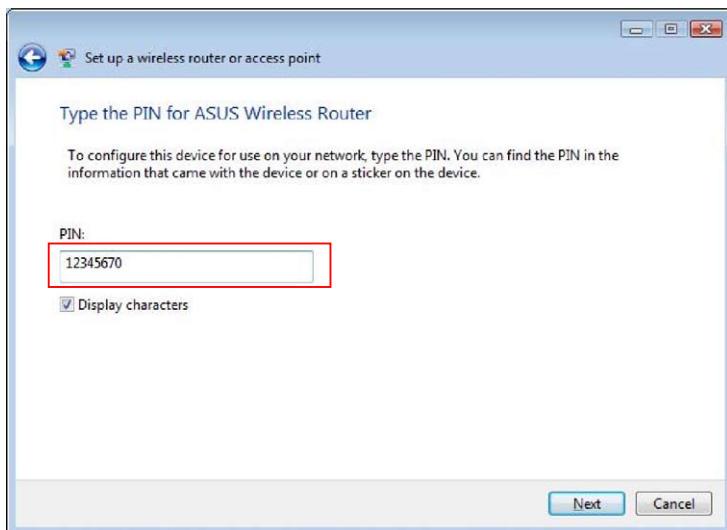


- Choose a security method and click **Next**.

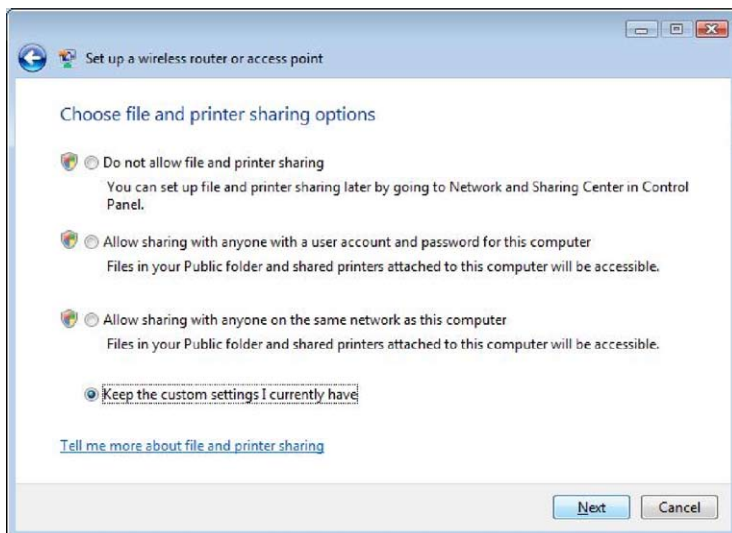




9. A screen prompts you to enter the PIN for the device. Enter the PIN, which is located on the sticker posted on the device, then click **Next**.

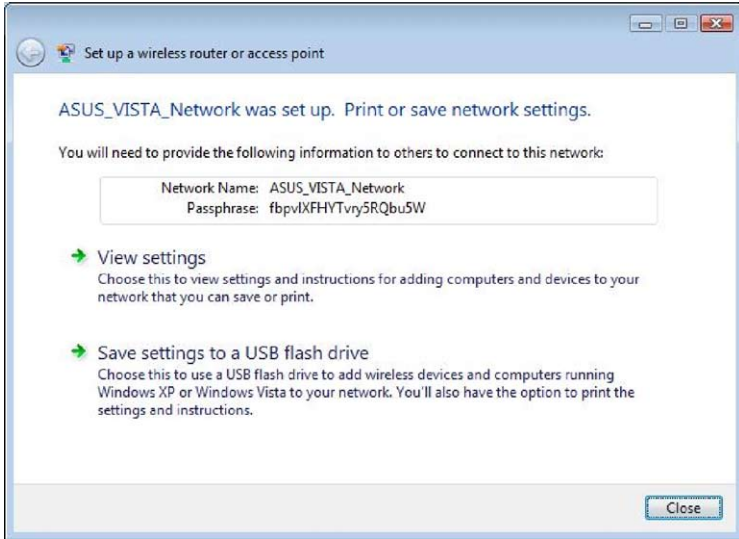


10. Choose a file and printer sharing option and click **Next**.



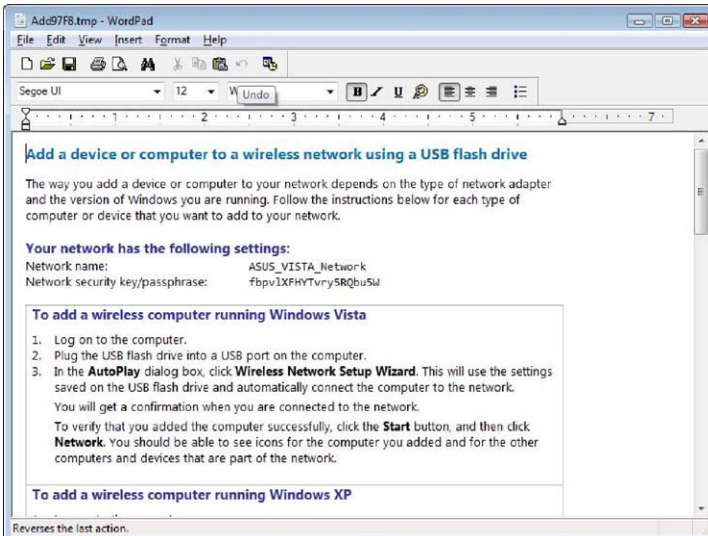


A screen appears showing that the set up is complete as shown below.



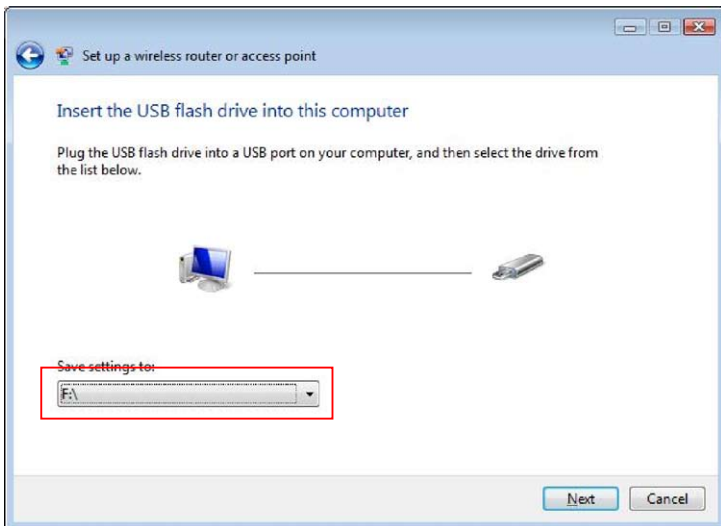
11. From the above screen you can choose to **View settings** or, **Save settings to a USB flash drive**. The respective screens are shown below.

View settings screen



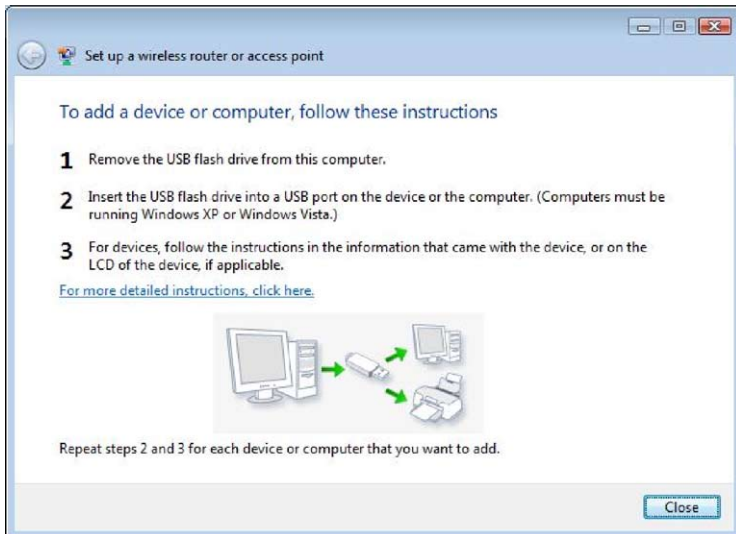


Save settings to a USB flash drive screen



12. When **Save settings to a USB flash drive** screen appears, plug a USB flash drive into your computer, then select the drive from the **Save settings to** box and click **Next**. The settings starts to be saved into the USB drive.

After the saving process is completed, a screen appears to instruct you to add computer or other devices into the network. Follow the instructions to add computers and devices into your network.





7. Troubleshooting

Cannot access to web browser for router configuration



1. Open a web browser and open "Internet Options" dialog box.
2. Click on "Delete Cookies" and "Delete Files".

Cannot Establish Connection via Wireless

Out of Range:

- Put the router closer to the wireless client.
- Try to change the channel setting.

Authentication:

- Use wired connection to connect to router.
- Check the wireless security setting.
- Do the hard reset on the wireless router by pressing the Reset button on the rear panel for more than 5 seconds.

Couldn't find the router:

- Do the hard reset on the wireless router by pressing the Reset button on the rear panel for more than 5 seconds.
- Check the setting in the wireless adapter such as SSID and encryption setting.

Cannot get access to the Internet via wireless LAN adapter

- Move the router closer to the wireless client.
- Check whether the wireless adapter is connected to the correct AP.
- Check whether the wireless channel in use conforms to the channels available in your country/ area.
- Check encryption setting.
- Check whether the ADSL or Cable connection is correct.
- Retry using another Ethernet cable.



Internet is not accessible

- Check the lights on ADSL modem and the Wireless Router.
- Check whether the "WAN" LED on the Wireless Router is ON. If the LED is not ON, change the cable and try again.

When ADSL Modem "Link" light is ON (not blinking), this means Internet Access is Possible.

- Restart your computer.
- Refer to the Quick Setup Guide of the wireless router and reconfigure the settings.
- Check whether the WAN LED on the router is ON or not.
- Check wireless encryption settings.
- Check whether the computer can get the IP address or not (via both wired network and wireless network).
- Make sure your Web browser is configured to use the local LAN, and is not configured to use a proxy server.

If the ADSL "LINK" light blinks continuously or stays off, Internet access is not possible - the Router is unable to establish a connection with the ADSL network.

- Make sure your cables are all correctly connected .
- Disconnect the power cord from the ADSL or Cable modem, wait a few minutes, then reconnect the cord.
- If the ADSL light continues to blink or stays OFF, contact your ADSL service provider.

Network name or encryption keys are forgotten

- Try to setup the wired connection for setup the wireless encryption again.
- Do the hard reset on the wireless router by pressing the Reset button on the rear panel for more than 5 seconds.

How to reset to defaults

The following are factory default values. If you push the Restore button on the back of the ASUS Wireless Router for over 5 seconds, or click the "Restore" button on the "Factory Default" page under "Advanced Setup", the following default settings overwrite the old settings on your wireless router.

User Name:	admin	Subnet Mask:	255.255.255.0
Password:	admin	DNS Server 1:	192.168.1.1
Enable DHCP:	Yes (if plug in Wan cable)	DNS Server 2:	(Blank)
IP address:	192.168.1.1	SSID:	default
Domain Name:	(Blank)		



8. Appendix



FCC Warning Statement

This device complies with Part 15 of the FCC Rules. Operation is subject to the following two conditions:

- (1) this device may not cause harmful interference, and
- (2) this device must accept any interference received, including interference that may cause undesired operation.

This equipment has been tested and found to comply with the limits for a class B digital device, pursuant to part 15 of the FCC Rules. These limits are designed to provide reasonable protection against harmful interference in a residential installation.

This equipment generates, uses and can radiate radio frequency energy and, if not installed and used in accordance with the instructions, may cause harmful interference to radio communications. However, there is no guarantee that interference will not occur in a particular installation. If this equipment does cause harmful interference to radio or television reception, which can be determined by turning the equipment off and on, the user is encouraged to try to correct the interference by one or more of the following measures:

- Reorient or relocate the receiving antenna.
- Increase the separation between the equipment and receiver.
- Connect the equipment into an outlet on a circuit different from that to which the receiver is connected.
- Consult the dealer or an experienced radio/TV technician for help.



CAUTION:

Any changes or modifications not expressly approved by the party responsible for compliance could void the user's authority to operate the equipment.

Prohibition of Co-location

This device and its antenna(s) must not be co-located or operating in conjunction with any other antenna or transmitter.

Safety Information

To maintain compliance with FCC's RF exposure guidelines, this equipment should be installed and operated with minimum distance 20cm between the radiator and your body. Use on the supplied antenna.

Declaration of Conformity for R&TTE directive 1999/5/EC

Essential requirements – Article 3

Protection requirements for health and safety – Article 3.1a



Testing for electric safety according to EN 60950-1 has been conducted. These are considered relevant and sufficient.

Protection requirements for electromagnetic compatibility – Article 3.1b

Testing for electromagnetic compatibility according to EN 301 489-1 and EN 301 489-17 has been conducted. These are considered relevant and sufficient.

Effective use of the radio spectrum – Article 3.2

Testing for radio test suites according to EN 300 328- 2 has been conducted. These are considered relevant and sufficient.

CE Mark Warning



This is a Class B product, in a domestic environment, this product may cause radio interference, in which case the user may be required to take adequate measures.

GNU general public license

Licensing information

This product includes copyrighted third-party software licensed under the terms of the GNU General Public License. Please see The GNU General Public License for the exact terms and conditions of this license. We include a copy of the GPL with every CD shipped with our product. All future firmware updates will also be accompanied with their respective source code. Please visit our web site for updated information. Note that we do not offer direct support for the distribution.

GNU GENERAL PUBLIC LICENSE

Version 2, June 1991

Copyright (C) 1989, 1991 Free Software Foundation, Inc.

59 Temple Place, Suite 330, Boston, MA 02111-1307 USA

Everyone is permitted to copy and distribute verbatim copies of this license document, but changing it is not allowed.

Preamble

The licenses for most software are designed to take away your freedom to share and change it. By contrast, the GNU General Public License is intended to guarantee your freedom to share and change free software--to make sure the software is free for all its users. This General Public License applies to most of the Free Software Foundation's software and to any other program whose authors commit to using it. (Some other Free Software Foundation software is covered by the GNU Library General Public License instead.) You can apply it to your programs, too.

When we speak of free software, we are referring to freedom, not price. Our General Public Licenses are designed to make sure that you have the freedom to distribute copies of free software (and charge for this service if you wish), that you receive source code or can get it if you want it, that you can change the software or use pieces of it in new free programs; and that you know you can do these things.



To protect your rights, we need to make restrictions that forbid anyone to deny you these rights or to ask you to surrender the rights. These restrictions translate to certain responsibilities for you if you distribute copies of the software, or if you modify it.

For example, if you distribute copies of such a program, whether gratis or for a fee, you must give the recipients all the rights that you have. You must make sure that they, too, receive or can get the source code. And you must show them these terms so they know their rights.

We protect your rights with two steps: (1) copyright the software, and (2) offer you this license which gives you legal permission to copy, distribute and/or modify the software.

Also, for each author's protection and ours, we want to make certain that everyone understands that there is no warranty for this free software. If the software is modified by someone else and passed on, we want its recipients to know that what they have is not the original, so that any problems introduced by others will not reflect on the original authors' reputations.

Finally, any free program is threatened constantly by software patents. We wish to avoid the danger that redistributors of a free program will individually obtain patent licenses, in effect making the program proprietary. To prevent this, we have made it clear that any patent must be licensed for everyone's free use or not licensed at all.

The precise terms and conditions for copying, distribution and modification follow.

Terms & conditions for copying, distribution, & modification

0. This License applies to any program or other work which contains a notice placed by the copyright holder saying it may be distributed under the terms of this General Public License. The "Program", below, refers to any such program or work, and a "work based on the Program" means either the Program or any derivative work under copyright law: that is to say, a work containing the Program or a portion of it, either verbatim or with modifications and/or translated into another language. (Hereinafter, translation is included without limitation in the term "modification".) Each licensee is addressed as "you".

Activities other than copying, distribution and modification are not covered by this License; they are outside its scope. The act of running the Program is not restricted, and the output from the Program is covered only if its contents constitute a work based on the Program (independent of having been made by running the Program). Whether that is true depends on what the Program does.

1. You may copy and distribute verbatim copies of the Program's source code as you receive it, in any medium, provided that you conspicuously and appropriately publish on each copy an appropriate copyright notice and disclaimer of warranty; keep intact all the notices that refer to this License and to the absence of any warranty; and give any other recipients of the Program a copy of this License along with the Program.

You may charge a fee for the physical act of transferring a copy, and you may at your option offer warranty protection in exchange for a fee.

2. You may modify your copy or copies of the Program or any portion of it, thus forming a work based on the Program, and copy and distribute such modifications or work under the terms of Section 1 above, provided that you also meet all of these conditions:
 - a) You must cause the modified files to carry prominent notices stating that you changed the files and the date of any change.



b) You must cause any work that you distribute or publish, that in whole or in part contains or is derived from the Program or any part thereof, to be licensed as a whole at no charge to all third parties under the terms of this License.

c) If the modified program normally reads commands interactively when run, you must cause it, when started running for such interactive use in the most ordinary way, to print or display an announcement including an appropriate copyright notice and a notice that there is no warranty (or else, saying that you provide a warranty) and that users may redistribute the program under these conditions, and telling the user how to view a copy of this License. (Exception: if the Program itself is interactive but does not normally print such an announcement, your work based on the Program is not required to print an announcement.)

These requirements apply to the modified work as a whole. If identifiable sections of that work are not derived from the Program, and can be reasonably considered independent and separate works in themselves, then this License, and its terms, do not apply to those sections when you distribute them as separate works. But when you distribute the same sections as part of a whole which is a work based on the Program, the distribution of the whole must be on the terms of this License, whose permissions for other licensees extend to the entire whole, and thus to each and every part regardless of who wrote it.

Thus, it is not the intent of this section to claim rights or contest your rights to work written entirely by you; rather, the intent is to exercise the right to control the distribution of derivative or collective works based on the Program.

In addition, mere aggregation of another work not based on the Program with the Program (or with a work based on the Program) on a volume of a storage or distribution medium does not bring the other work under the scope of this License.

3. You may copy and distribute the Program (or a work based on it, under Section 2) in object code or executable form under the terms of Sections 1 and 2 above provided that you also do one of the following:

a) Accompany it with the complete corresponding machine-readable source code, which must be distributed under the terms of Sections 1 and 2 above on a medium customarily used for software interchange; or,

b) Accompany it with a written offer, valid for at least three years, to give any third party, for a charge no more than your cost of physically performing source distribution, a complete machine-readable copy of the corresponding source code, to be distributed under the terms of Sections 1 and 2 above on a medium customarily used for software interchange; or,

c) Accompany it with the information you received as to the offer to distribute corresponding source code. (This alternative is allowed only for noncommercial distribution and only if you received the program in object code or executable form with such an offer, in accord with Subsection b above.)

The source code for a work means the preferred form of the work for making modifications to it. For an executable work, complete source code means all the source code for all modules it contains, plus any associated interface definition files, plus the scripts used to control compilation and installation of the executable. However, as a special exception, the source code distributed need not include anything that is normally distributed (in either source or binary form) with the major components (compiler, kernel, and so on) of the operating system on which the executable runs, unless that component itself accompanies the executable.



If distribution of executable or object code is made by offering access to copy from a designated place, then offering equivalent access to copy the source code from the same place counts as distribution of the source code, even though third parties are not compelled to copy the source along with the object code.

4. You may not copy, modify, sublicense, or distribute the Program except as expressly provided under this License. Any attempt otherwise to copy, modify, sublicense or distribute the Program is void, and will automatically terminate your rights under this License. However, parties who have received copies, or rights, from you under this License will not have their licenses terminated so long as such parties remain in full compliance.
5. You are not required to accept this License, since you have not signed it. However, nothing else grants you permission to modify or distribute the Program or its derivative works. These actions are prohibited by law if you do not accept this License. Therefore, by modifying or distributing the Program (or any work based on the Program), you indicate your acceptance of this License to do so, and all its terms and conditions for copying, distributing or modifying the Program or works based on it.
6. Each time you redistribute the Program (or any work based on the Program), the recipient automatically receives a license from the original licensor to copy, distribute or modify the Program subject to these terms and conditions. You may not impose any further restrictions on the recipients' exercise of the rights granted herein. You are not responsible for enforcing compliance by third parties to this License.
7. If, as a consequence of a court judgment or allegation of patent infringement or for any other reason (not limited to patent issues), conditions are imposed on you (whether by court order, agreement or otherwise) that contradict the conditions of this License, they do not excuse you from the conditions of this License. If you cannot distribute so as to satisfy simultaneously your obligations under this License and any other pertinent obligations, then as a consequence you may not distribute the Program at all. For example, if a patent license would not permit royalty-free redistribution of the Program by all those who receive copies directly or indirectly through you, then the only way you could satisfy both it and this License would be to refrain entirely from distribution of the Program.

If any portion of this section is held invalid or unenforceable under any particular circumstance, the balance of the section is intended to apply and the section as a whole is intended to apply in other circumstances.

It is not the purpose of this section to induce you to infringe any patents or other property right claims or to contest validity of any such claims; this section has the sole purpose of protecting the integrity of the free software distribution system, which is implemented by public license practices. Many people have made generous contributions to the wide range of software distributed through that system in reliance on consistent application of that system; it is up to the author/donor to decide if he or she is willing to distribute software through any other system and a licensee cannot impose that choice.

This section is intended to make thoroughly clear what is believed to be a consequence of the rest of this License.

8. If the distribution and/or use of the Program is restricted in certain countries either by patents or by copyrighted interfaces, the original copyright holder who places the Program under this License may add an explicit geographical distribution limitation excluding those countries, so that distribution is permitted only in or among countries not thus excluded. In such case, this License incorporates the limitation as if written in the body of this License.



9. The Free Software Foundation may publish revised and/or new versions of the General Public License from time to time. Such new versions will be similar in spirit to the present version, but may differ in detail to address new problems or concerns.

Each version is given a distinguishing version number. If the Program specifies a version number of this License which applies to it and “any later version”, you have the option of following the terms and conditions either of that version or of any later version published by the Free Software Foundation. If the Program does not specify a version number of this License, you may choose any version ever published by the Free Software Foundation.

10. If you wish to incorporate parts of the Program into other free programs whose distribution conditions are different, write to the author to ask for permission. For software which is copyrighted by the Free Software Foundation, write to the Free Software Foundation; we sometimes make exceptions for this. Our decision will be guided by the two goals of preserving the free status of all derivatives of our free software and of promoting the sharing and reuse of software generally.

NO WARRANTY

11. BECAUSE THE PROGRAM IS LICENSED FREE OF CHARGE, THERE IS NO WARRANTY FOR THE PROGRAM, TO THE EXTENT PERMITTED BY APPLICABLE LAW. EXCEPT WHEN OTHERWISE STATED IN WRITING THE COPYRIGHT HOLDERS AND/OR OTHER PARTIES PROVIDE THE PROGRAM “AS IS” WITHOUT WARRANTY OF ANY KIND, EITHER EXPRESSED OR IMPLIED, INCLUDING, BUT NOT LIMITED TO, THE IMPLIED WARRANTIES OF MERCHANTABILITY AND FITNESS FOR A PARTICULAR PURPOSE. THE ENTIRE RISK AS TO THE QUALITY AND PERFORMANCE OF THE PROGRAM IS WITH YOU. SHOULD THE PROGRAM PROVE DEFECTIVE, YOU ASSUME THE COST OF ALL NECESSARY SERVICING, REPAIR OR CORRECTION.

12. IN NO EVENT UNLESS REQUIRED BY APPLICABLE LAW OR AGREED TO IN WRITING WILL ANY COPYRIGHT HOLDER, OR ANY OTHER PARTY WHO MAY MODIFY AND/OR REDISTRIBUTE THE PROGRAM AS PERMITTED ABOVE, BE LIABLE TO YOU FOR DAMAGES, INCLUDING ANY GENERAL, SPECIAL, INCIDENTAL OR CONSEQUENTIAL DAMAGES ARISING OUT OF THE USE OR INABILITY TO USE THE PROGRAM (INCLUDING BUT NOT LIMITED TO LOSS OF DATA OR DATA BEING RENDERED INACCURATE OR LOSSES SUSTAINED BY YOU OR THIRD PARTIES OR A FAILURE OF THE PROGRAM TO OPERATE WITH ANY OTHER PROGRAMS), EVEN IF SUCH HOLDER OR OTHER PARTY HAS BEEN ADVISED OF THE POSSIBILITY OF SUCH DAMAGES.

END OF TERMS AND CONDITIONS

NCC warning

經型式認證合格之低功率射頻電機，非經許可，公司、商號或使用者均不得擅自變更頻率、加大功率或變更原設計之特性及功能。

低功率射頻電機之使用不得影響飛航安全及干擾合法通信；經發現有干擾現象時，應立即停用，並改善至無干擾時方得繼續使用。

前項合法通信，指依電信法規定作業之無線電通信。

低功率射頻電機須忍受合法通信或工業、科學及醫療用電波輻射性電機設備之干擾。