

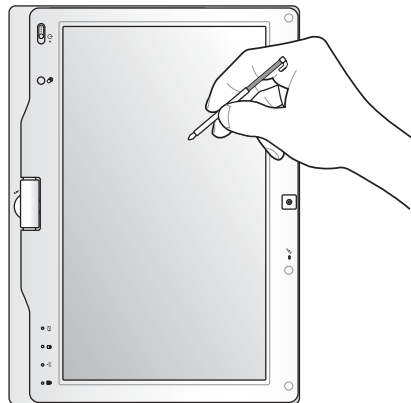
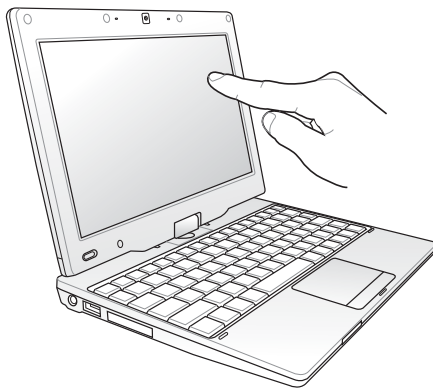
E4518

# Eee PC

## User Manual

### Windows<sup>®</sup> XP Edition

### Eee PC T91



15G06QXXXXXX

## Table of Contents

|  |      |
|--|------|
| About This User's Manual .....                 | iv   |
| Notes for This Manual .....                    | iv   |
| Safety Precautions .....                       | v    |
| <b>Chapter 1: Knowing the Parts</b>            |      |
| Top Side .....                                 | 1-2  |
| Bottom Side.....                               | 1-5  |
| Right Side .....                               | 1-7  |
| Left Side .....                                | 1-8  |
| Front Side .....                               | 1-9  |
| Rear Side.....                                 | 1-10 |
| Keyboard Usage.....                            | 1-11 |
| Special Function Keys .....                    | 1-11 |
| Tablet PC Mode.....                            | 1-13 |
| <b>Chapter 2: Getting Started</b>              |      |
| Powering on your Eee PC .....                  | 2-2  |
| First-time Startup .....                       | 2-3  |
| Desktop.....                                   | 2-4  |
| ASUS EeePC Tray Utility.....                   | 2-5  |
| Enabling and Disabling Devices.....            | 2-5  |
| Adjusting the display resolution.....          | 2-6  |
| Network Connection.....                        | 2-7  |
| Configuring a wireless network connection..... | 2-7  |
| Local Area Network.....                        | 2-8  |
| Browsing web pages .....                       | 2-11 |
| <b>Chapter 3: Using the Eee PC</b>             |      |
| Live Update .....                              | 3-2  |
| Updating the Eee PC through the Internet.....  | 3-2  |
| Bluetooth Connection.....                      | 3-4  |
| Super Hybrid Engine.....                       | 3-6  |
| Super Hybrid Engine Modes.....                 | 3-6  |
| Eee Storage.....                               | 3-7  |
| Eee Docking Touch .....                        | 3-9  |
| Microsoft® Office Trial.....                   | 3-11 |

## **Chapter 4: Support DVD and System Recovery**

|                               |     |
|-------------------------------|-----|
| Support DVD information ..... | 4-2 |
| Running the support DVD.....  | 4-2 |
| Drivers menu.....             | 4-3 |
| Utilities menu.....           | 4-3 |
| Contact .....                 | 4-3 |
| Other information .....       | 4-3 |
| System Recovery .....         | 4-4 |
| Using the Support DVD.....    | 4-4 |
| Boot Booster .....            | 4-6 |

## **Appendix**

|  |      |
|--|------|
| Declarations and Safety Statements ..... | A-2  |
| Copyright Information .....              | A-11 |
| Limitation of Liability .....            | A-12 |
| Service and Support.....                 | A-12 |

## About This User's Manual

You are reading the Eee PC User's Manual. This User's Manual provides information regarding the various components in the Eee PC and how to use them. The following are major sections of this User's Manual:

**1. Knowing the Parts**

Provides information on the Eee PC's components.

**2. Getting Started**

Provides information on getting started with the Eee PC.

**3. Using the Eee PC**

Provides information on using the Eee PC's utilities.

**4. Support DVD and System Recovery**

Gives you information on support DVD contents and system recovery.

**5. Appendix**

Gives you safety statements.



---

The actual bundled applications differ by models and territories. There may be differences between your Eee PC and the pictures shown in this manual. Please accept your Eee PC as being correct.

---

## Notes for This Manual

A few notes and warnings are used throughout this guide, allowing you to complete certain tasks safely and effectively. These notes have different degrees of importance as follows:



---

**WARNING!** Important information that must be followed for safe operation.

---



---

**IMPORTANT!** Vital information that must be followed to prevent damage to data, components, or persons.

---



---

**TIP:** Tips for completing tasks.

---



---

**NOTE:** Information for special situations.

---

## Safety Precautions

The following safety precautions will increase the life of the Eee PC. Follow all precautions and instructions. Except as described in this manual, refer all servicing to qualified personnel. Do not use damaged power cords, accessories, or other peripherals. Do not use strong solvents such as thinners, benzene, or other chemicals on or near the surface.



Disconnect the AC power before cleaning. Wipe the Eee PC using a clean cellulose sponge or chamois cloth dampened with a solution of nonabrasive detergent and a few drops of warm water and remove any extra moisture with a dry cloth.



DO NOT place on uneven or unstable work surfaces. Seek servicing if the casing has been damaged.



DO NOT place or drop objects on top and do not shove any foreign objects into the Eee PC.



DO NOT expose to dirty or dusty environments. DO NOT operate during a gas leak.



DO NOT expose to strong magnetic or electrical fields.



DO NOT place together with small items that may scratch or enter the Eee PC.



DO NOT expose to or use near liquids, rain, or moisture. DO NOT use the modem during electrical storms.



DO NOT leave the Eee PC on your lap or any part of the body to prevent discomfort or injury from heat exposure.



**SAFE TEMP:** This Eee PC should only be used in environments with ambient temperatures between 5°C (41°F) and 35°C (95°F)



DO NOT carry or cover a Eee PC that is powered ON with any materials that will reduce air circulation such as a carrying bag.



INPUT RATING: Refer to the rating label on the bottom of the Eee PC and be sure that your power adapter complies with the rating.



DO NOT throw the Eee PC in municipal waste. This product has been designed to enable proper reuse of parts and recycling. The symbol of the crossed out wheeled bin indicates that the product (electrical, electronic equipment and mercury-containing button cell battery) should not be placed in municipal waste. Check local regulations for disposal of electronic products.



DO NOT throw the battery in municipal waste. The symbol of the crossed out wheeled bin indicates that the battery should not be placed in municipal waste.

## Transportation Precautions

To prepare your Eee PC for transport, you should turn it OFF and **disconnect all external peripherals to prevent damage to the connectors**. The hard disk drive's head retracts when the power is turned OFF to prevent scratching of the hard disk surface during transport. **Therefore, you should not transport your Eee PC while the power is still ON**. Close the display panel to protect the keyboard and display panel.

The Eee PC's surface is easily dulled if not properly cared for. Be careful not to rub or scrape surfaces when transporting your Eee PC. You can put your Eee PC in a carrying case for protection from dirt, water, shock, and scratches.

## Charging Your Batteries

If you intend to use battery power, be sure to fully charge your battery pack before going on long trips. Remember that the power adapter charges the battery pack as long as it is plugged into the computer and an AC power source. Be aware that it takes much longer to charge the battery pack when the Eee PC is in use.

Remember to fully charge the battery (8 hours or more) before first use to prolong battery life. The battery reaches its maximum capacity after a few full charging and discharging cycles.

## Airplane Precautions

Contact your airline if you want to use the Eee PC on the airplane. Most airlines have restrictions for using electronic devices. Most airlines allow electronic use only between and not during takeoffs and landings.



---

There are three main types of airport security devices: X-ray machines (used on items placed on conveyor belts), magnetic detectors (used on people walking through security checks), and magnetic wands (hand-held devices used on people or individual items). You can send your Eee PC and diskettes through airport X-ray machines. However, it is recommended that you do not send your Eee PC or diskettes through airport magnetic detectors or expose them to magnetic wands.

---





**Top Side**

**Bottom Side**

**Right Side**

**Left Side**

**Front Side**

**Rear Side**

**Keyboard Usage**

**Tablet PC Mode**

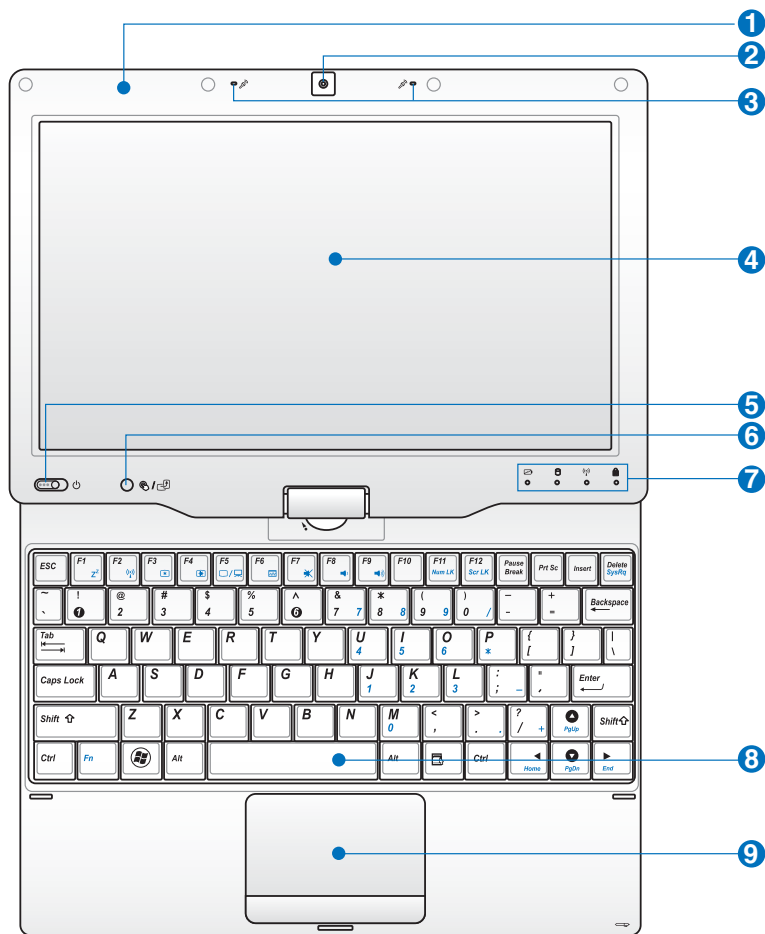
# Knowing the Parts **1**

## Top Side

Refer to the illustration below to identify the components on this side of the Eee PC.



The top side may vary in appearance depending on model.



The keyboard differs for each territory.

**1**  **GPS Antenna (Hidden, optional)**

The built-in Global Positioning System (GPS) antenna allows you to turn the Eee PC into a mobile navigation device.

**2**  **Built-in Camera**

**3**  **Array Microphone (Built-in)**

The built-in array microphone is more clear and echo-free compared with traditional single microphones.

**4**  **Touchscreen Panel**

The touchscreen panel allows you to operate your Eee PC using your finger or the touchscreen pen.

**5**  **Power Switch**

The power switch allows powering ON and OFF the Eee PC and recovering from standby mode. Slide and release the switch to turn ON, or slide and hold it to turn OFF the Eee PC. The power switch only works when the display panel is opened.

**Power Indicator**

The power indicator lights when the Eee PC is turned ON and blinks slowly when the Eee PC is in the Save-to-RAM (Suspend) mode. This indicator is OFF when the Eee PC is turned OFF.

**6**  **3Doorway and Screen Rotation Key**

Shortly Press this key to launch the 3Doorway touch-screen interface. Press and hold this key to show the preview of screen rotation, and then release the key to finish screen rotation.

**7**  **Status Indicators**

 **Battery Charge Indicator**

The battery charge indicator (LED) shows the battery charging status as follows:

### Powered ON / Standby mode

|                                | With Adapter    | Without Adapter                                    |
|--------------------------------|-----------------|--|
| High battery power (95%–100%)  | Green ON        | Off  |
| Medium battery power (10%–94%) | Orange ON       | Off  |
| Low battery power (0%–10%)     | Orange Blinking | Orange Blinking (Powered ON)<br>Off (Standby Mode) |

### Powered OFF

|                                | With Adapter    | Without Adapter |
|--------------------------------|-----------------|-----------------|
| High battery power (95%–100%)  | Green ON        | Off             |
| Medium battery power (11%–94%) | Orange ON       | Off             |
| Low battery power (0%–10%)     | Orange Blinking | Off             |

### Storage Device Indicator

The storage device indicator blinks when data is written to or read from the storage device.

### Wireless/Bluetooth Indicator

This is only applicable on models with built-in wireless LAN/Bluetooth. When the built-in wireless LAN/Bluetooth is enabled, this indicator lights.

### Capital Lock Indicator

Indicates that capital lock [Caps Lock] is activated when lighted.

## 8 Keyboard

The keyboard provides keys with comfortable travel (depth at which the keys can be depressed) and palm rest for both hands.

## 9 Touchpad and Buttons

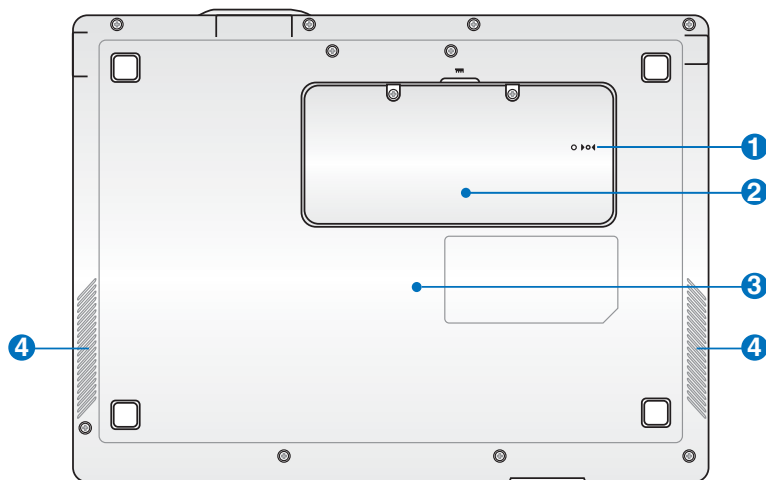
The touchpad and its buttons comprises a pointing device that provides the same functions as a desktop mouse.

## Bottom Side

Refer to the illustration below to identify the components on this side of the Eee PC.



The bottom side may vary in appearance depending on model.



The bottom of the Eee PC can get very hot. Be careful when handling the Eee PC while it is in operation or recently been in operation. High temperatures are normal during charging or operation. DO NOT use on soft surfaces such as beds or sofas, which may hinder heat dissipation. DO NOT PUT THE Eee PC ON YOUR LAP OR OTHER PARTS OF THE BODY TO AVOID INJURY FROM THE HEAT.

### 1 Reset Button (Emergency)

In case your operating system cannot properly turn OFF or restart, the reset button can be depressed with a pin or a straightened paper clip to restart the Eee PC.

### 2 Memory Compartment

The memory module is secured in a dedicated compartment.

**3**  **Embedded Battery Pack**

The embedded battery pack is automatically charged when connected to an AC power source and maintains power to the Eee PC when AC power is not connected. This allows use when moving temporarily between locations. Battery time varies by usage and by the specifications for this Eee PC.



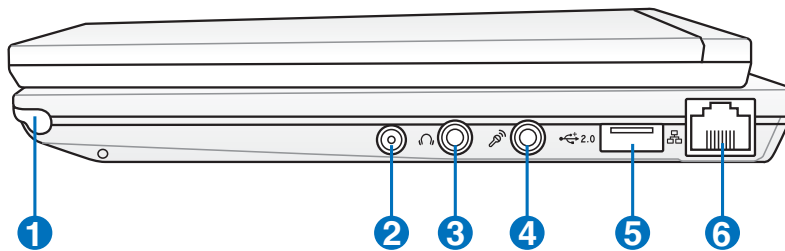
The embedded battery pack is replaceable only by trained service personnel.






---

**4**  **Audio Speaker System**

## Right Side

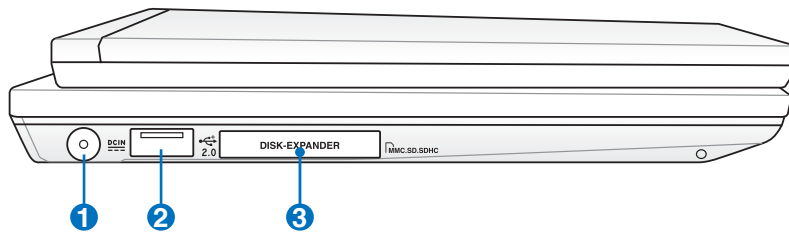
Refer to the illustration below to identify the components on this side of the Eee PC.



- 1 Touchscreen Pen Compartment**  
The touchscreen pen compartment allows storage of the pen used on the touchscreen panel.
- 2  Antenna Input (optional)**  
The antenna input is for TV frequency signal and allows for use with the provided digital TV antenna.
- 3  Headphone Output Jack**  
The 1/8" stereo headphone jack (3.5mm) connects the Eee PC's audio out signal to amplified speakers or headphones. Using this jack automatically disables the built-in speakers.
- 4  Microphone Jack**  
The microphone jack is designed to connect the microphone used for Skype, voice narrations, or simple audio recordings.
- 5  USB Port (2.0/1.1)**
- 6  LAN Port**  
The eight-pin RJ-45 LAN port (10/100M bit) supports a standard Ethernet cable for connection to a local network. The built-in connector allows convenient use without additional adapters.

## Left Side

Refer to the illustration below to identify the components on this side of the Eee PC.



### 1 Power (DC) Input

The supplied power adapter converts AC power to DC power for use with this jack. Power supplied through this jack supplies power to the Eee PC and charges the internal battery pack. To prevent damage to the Eee PC and battery pack, always use the supplied power adapter.



CAUTION: MAY BECOME WARM TO HOT WHEN IN USE. BE SURE NOT TO COVER THE ADAPTER AND KEEP IT AWAY FROM YOUR BODY.

### 2 USB Port (2.0/1.1)

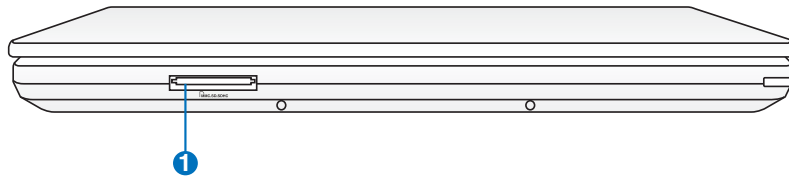
### 3 Disk-expander Slot

The built-in disk-expander slot allows you to expand the system drive capacity using an MMC/SD/SDHC memory card.



## Front Side

Refer to the illustration below to identify the components on this side of the Eee PC.

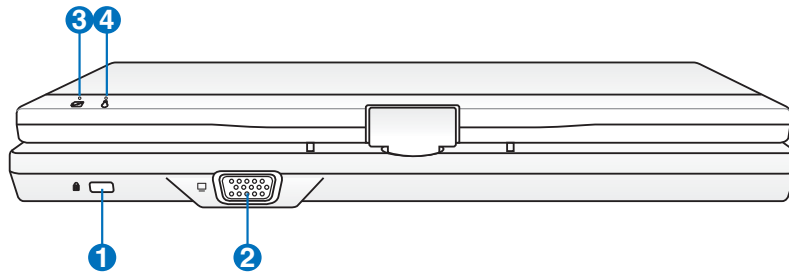



### 1 Memory Card Slot


The built-in memory card reader can read MMC/SD/SDHC cards.


## Rear Side


Refer to the illustration below to identify the components on this side of the Eee PC.



- 1**  **Kensington® Lock Port**

The Kensington® lock port allows the Eee PC to be secured using Kensington® compatible security products. These security products usually include a metal cable and lock that prevent the Eee PC to be removed from a fixed object.
- 2**  **Display (Monitor) Output**

The 15-pin D-sub monitor port supports a standard VGA-compatible device such as a monitor or projector to allow viewing on a larger external display.
- 3**  **Battery Charge Indicator**

The battery charge indicator (LED) shows the status of the battery's power. Refer to the LED status table on pages 1-3 to 1-4.
- 4**  **Power Indicator**

The power indicator lights when the Eee PC is turned ON and blinks slowly when the Eee PC is in the Save-to-RAM (Suspend) mode. This indicator is OFF when the Eee PC is turned OFF.

# Keyboard Usage

## Special Function Keys

The following defines the colored hot keys on the Eee PC's keyboard. The colored commands can only be accessed by first pressing and holding the function key while pressing a key with a colored command. Some function icons appear in the Notification area after activation.



The Hot Key locations on the function keys may vary depending on model but the functions should remain the same. Follow the icons whenever your hot key locations do not match the manual.



**zzz Icon (F1):** Places the Eee PC in suspend mode (Save-to-RAM).



**Radio Tower (F2):** Wireless Models Only: Toggles the internal wireless LAN or Bluetooth (on selected models) ON or OFF with an on-screen-display. When enabled, the corresponding wireless indicator will light.



The default setting is WLAN ON / Bluetooth OFF.



**Sun Down Icon (F3):** Decreases the display brightness.



**Sun Up Icon (F4):** Increases the display brightness.



**LCD/Monitor Icons (F5):** Toggles between the Eee PC's LCD display and an external monitor in this series: LCD Only -> CRT Only (External Monitor) -> LCD + CRT Clone.



**Task Manager Icon (F6):** Initiates the Task Manager to view the application process or terminates applications.



**Crossed Speaker Icon (F7):** Mutes the speaker.



**Speaker Down Icon (F8):** Decreases speaker volume.



**Speaker Up Icon (F9):** Increases the speaker volume.



**Num Lk (F11):** Toggles the numeric keypad (number lock) ON and OFF. Allows use of a larger portion of the keyboard for number entering.



**Scr Lk (F12):** Toggles the “Scroll Lock” ON and OFF. Allows you to use a larger portion of the keyboard for cell navigation.



**Pg Up (↑):** Press to scroll up in documents or the web browser.



**Pg Dn (↓):** Press to scroll down in documents or the web browser.



**Home (←):** Press to move the pointer to the beginning of the line.



**End (→):** Press to move the pointer to the end of the line.



**Windows icon:** Displays the start menu.

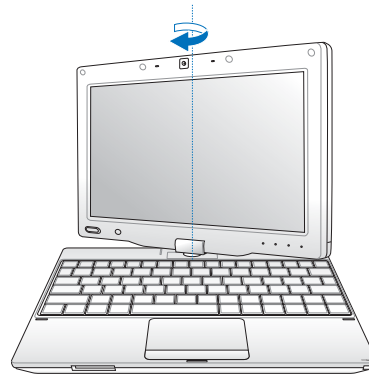
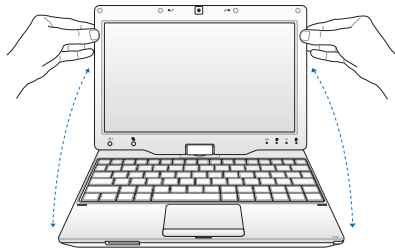


**Menu with pointer icon:** Activates the properties menu and is equivalent to right-clicking the touchpad/mouse on an object.

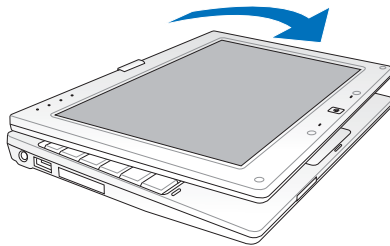
## Tablet PC Mode

The following are illustrations for using the tablet PC function.

1. Open the display panel to a 90° angle with both hands.
2. Rotate the display panel clockwise and vertically to a 180° angle.



3. Close down the display panel.





**Powering on your Eee PC**

**First-time Startup**

**Desktop**

**ASUS Eee PC Tray Utility**

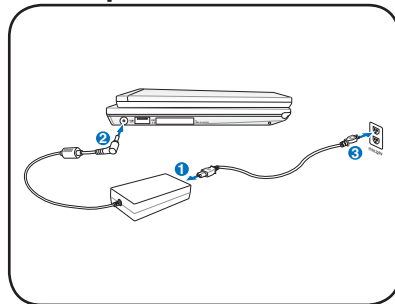
**Network Connection**

# Getting Started **2**

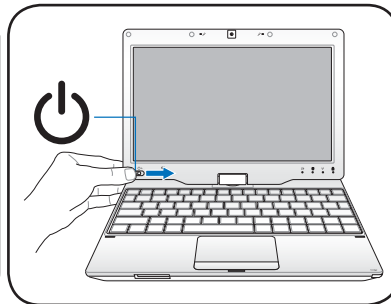
## Powering on your Eee PC

These are only quick instructions for using your Eee PC.

### 1. Connect the AC power adapter



### 2. Turn ON the Eee PC



- Damage may occur if you use a different adapter to power the Eee PC. You may damage both your battery pack and the Eee PC with a faulty AC-DC adapter.
- When you open the display panel, do not force it down to the table or else the hinges may break! Never lift the Eee PC by the display panel!
- Only use power adapters supplied with this Eee PC or specifically approved by the manufacturer or retailer for use with this model or else damage may occur to the Eee PC. The output voltage of this adapter is +12Vdc, 3A.



Remember to fully charge the battery before first use to prolong battery life.



# First-time Startup

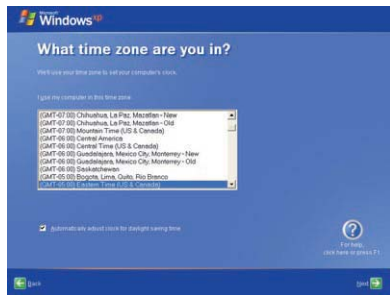
For the first time you start your Eee PC, the Windows wizard will launch automatically and lead you through setting up your preferences and some basic information.

Follow the wizard instructions to finish the initialization:

1. The **Welcome** message appears. Click **Next** to continue.
2. Select you system settings by specifying the region you are in, the language you use and the keyboard type you use. Click **Next** to continue.



3. Select the time zone you are in and click **Next** to continue.
4. Read the end user license agreement and click **Yes, I accept**. Click **Next** to continue.





## ASUS EeePC Tray Utility

The preloaded ASUS EeePC Tray utility allows you to turn off some devices to minimize the power consumption and helps you adjust the display resolution easily.

### Enabling and Disabling Devices

To disable or enable devices

1. Right-click the ASUS EeePC Tray Utility icon in the Notification area and the utility shows the available options:

**Disable WLAN:** Turns on and off the wireless LAN connection.

**Disable Bluetooth:** Turns on and off the Bluetooth connection.

**Disable Camera:** Enable or disable the built-in camera.

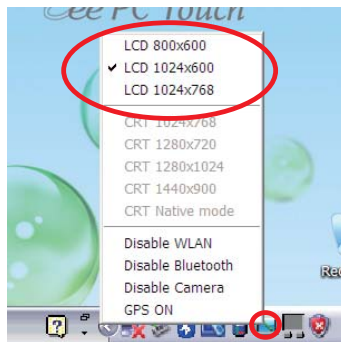
**GPS ON:** Enable or disable the built-in GPS device.



2. Select an option to turn it on or off based on your needs. The unavailable options are dimmed.

## Adjusting the display resolution

Click the ASUS EeePC Tray Utility icon in the Notification area to adjust the display resolution. Select the resolution based on your needs.



---

The CRT-related options are unavailable when there is no connected external monitors.

---



---

When the display mode of your Eee PC is **CRT Only** and the power mode is **Power Saving**, DO NOT use a resolution higher than 1024 x 600 pixels. Doing so would make the connected external monitor function abnormally.


---

# Network Connection


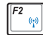
## Configuring a wireless network connection



This device contains FCC ID: MSQT91NE785H and IC ID: 3568A-T91NE785H.

1. Double-click the crossed wireless network icon  in the Notification area.

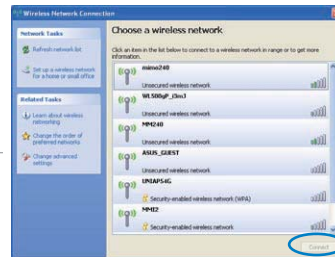


If the wireless connection icon does not show in the Notification area. Activate the wireless LAN function by pressing  +  (<Fn> + <F2>) before configuring a wireless network connection.

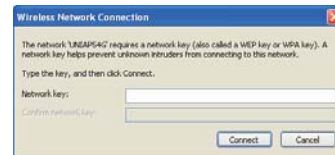
2. Select the wireless access point you want to connect to from the list and click **Connect** to build the connection.




If you cannot find the desired access point, click **Refresh network list** in the left pane and search in the list again.

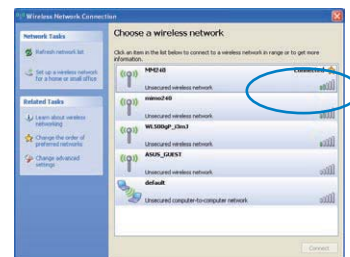




3. When connecting, you may have to enter a password.



4. After a connection has been established, the connection is shown on the list.

5. You can see the wireless network icon  in the Notification area.




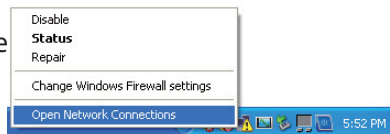
The wireless connection icon disappears when you Press  +  (<Fn> + <F2>) to disable the WLAN function.

## Local Area Network

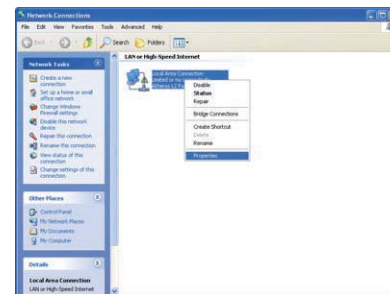
To establish a wired network, follow the instructions below:

### Using a dynamic IP:

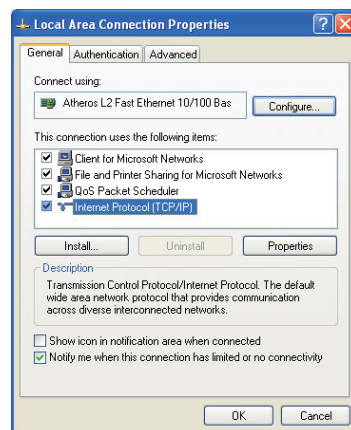
1. Right-click the network icon with a yellow warning triangle  on the Windows® taskbar and select **Open Network Connections**.



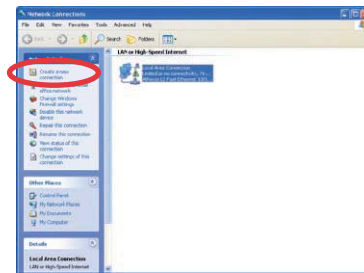
2. Right-click **Local Area Connection** and select **Properties**.



3. Click **Internet Protocol (TCP/IP)** and click **Properties**.
4. Click **Obtain an IP address automatically** and click **OK**.



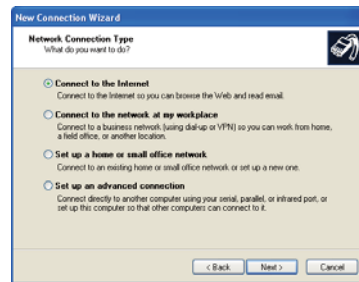
5. Click **Create a new connection** to start the New Connection Wizard.



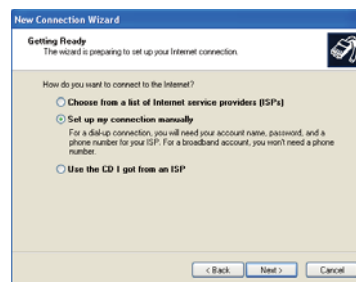
6. Click **Next**.



7. Select **Connect to the Internet** and click **Next**.



8. Select **Set up my connection manually**.



9. Select your connection type and click **Next**.



10. Enter your ISP Name and click **Next**.



11. Enter your User name and Password. Click **Next**.



12. Click **Finish** to finish the configuration.



13. Enter your user name and password. Click **Connect** to connect to the Internet.



### Using a static IP:

1. Repeat the step 1–3 of Using a dynamic IP to start the static IP network configuration.
2. Click **Use the following IP address**.
3. Enter the IP address, Subnet mask and Gateway from your service provider.
4. If needed, enter the preferred DNS Server address and alternative address.
5. After entering all the related values, click **OK** to build the network connection.

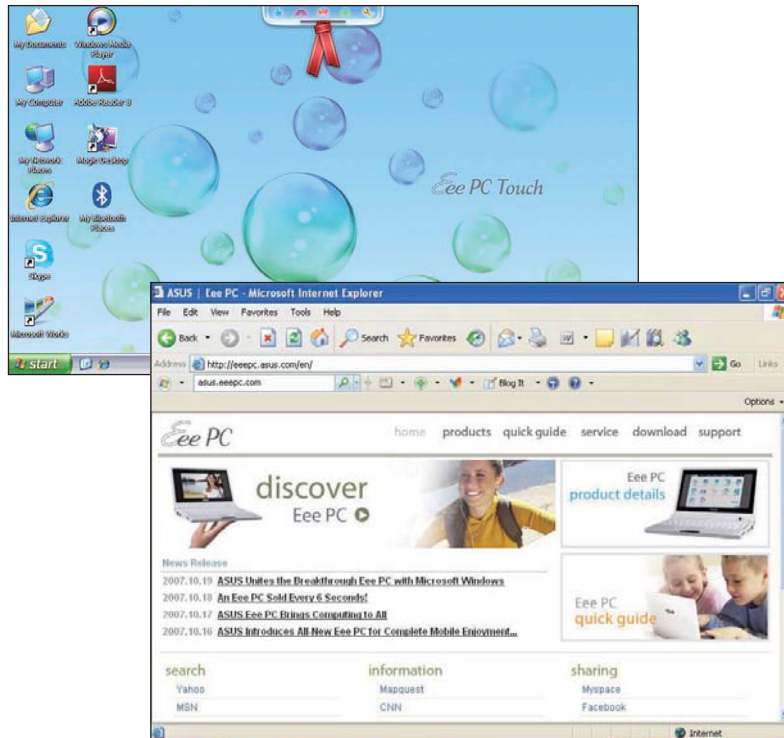


Contact your Internet Service Provider (ISP) if you have problems connecting to the network.



## Browsing web pages

After you finish the network setup, click **Internet Explorer** on the desktop and start enjoying net surfing.



Visit our Eee PC homepage (<http://eeepc.asus.com>) to obtain the latest information and register at <http://vip.asus.com> for full service of your Eee PC.



**Live Update**

**Bluetooth Connection**

**Super Hybrid Engine**

**Eee Storage**

**Microsoft® Office Trial**

**Using the Eee PC**

**3**

## Live Update

Live Update is a utility that allows you to update the Eee PC BIOS, drivers, and software in Windows® environment.

This utility is pre-loaded in your Eee PC and is also available in the support DVD that comes with the Eee PC package.

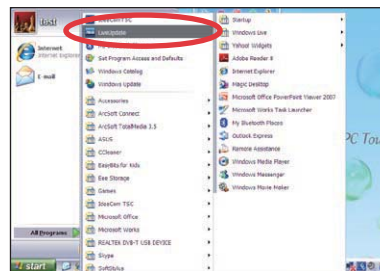


Live Update requires an Internet connection either through a network or an Internet Service Provider (ISP).

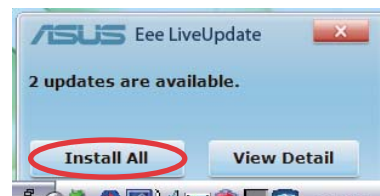
## Updating the Eee PC through the Internet

To update the Eee PC through the Internet:

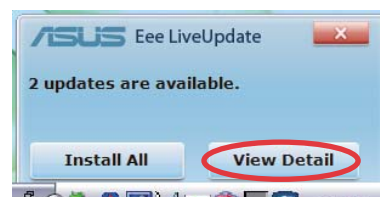
1. Launch the Live Update utility from the Windows® desktop by clicking **Start > All Programs > LiveUpdate**. The Live Update main window appears.



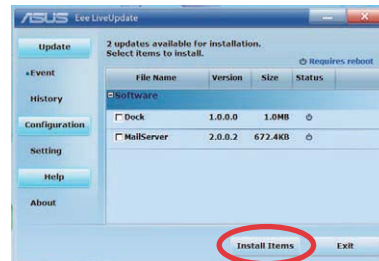
2. The Live Update utility automatically checks the online server and notifies you if there are new available updates. Click **Install All** to install all updates immediately.



3. You can also click **View Detail** to launch the Live Update main menu and view details of available updates.



- All available updates are listed in the **Event** tab. Click the check box in front of the update item and click **Install Items** to start update.
- Follow the screen instructions to complete the update process.



The Live Update utility is capable of updating itself through the Internet. Always update the utility to avail all its features.

## Bluetooth Connection

Bluetooth technology eliminates the need for cables for connecting Bluetooth-enabled devices. Examples of Bluetooth-enabled devices may be Notebook PCs, Desktop PCs, mobile phones, and PDAs.



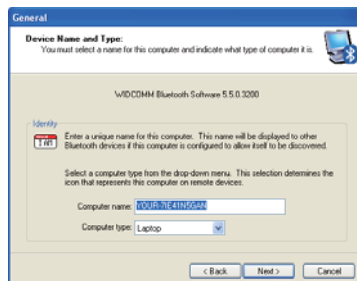
This device contains FCC ID:TLZ-BT253 and IC ID:6100A-AWBT250.

To connect to a Bluetooth-enabled device

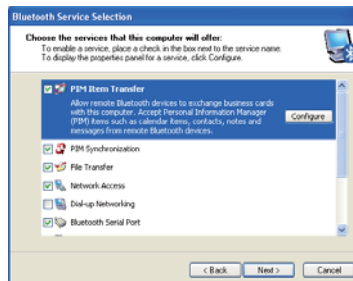
1. Press <Fn> + <F2> repeatedly until **Bluetooth ON** or **WLAN & Bluetooth ON** is shown.
2. Click **My Bluetooth Places** on the desktop and follow the onscreen instructions to finish initialization. Click **Next** to continue.



3. Name your Eee PC and select the device type. Click **Next** to continue.
4. To decide the Bluetooth services this device offers, click **Next** to continue.



5. Select the service you would like to offer from the list and click **Next** to continue.



6. Click **Next** to start setting up the Bluetooth connection.



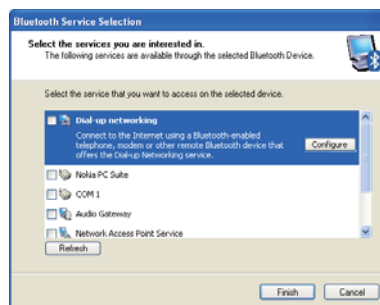
7. Select a Bluetooth-enabled device from the list and click **Next**.



8. Enter the Bluetooth security code and start pairing.



9. After the paired relationship is built, select the service you are interested in from the list and click **Finish** to use the selected service.

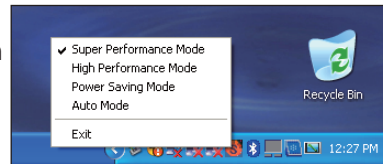


## Super Hybrid Engine

Super Hybrid Engine offers different power modes. The power saving modes control many aspects of your Eee PC to maximize performance versus battery time. The selected mode is shown on the display.

To change the power mode

- Click **start > All Programs > ASUS > EeePC > SuperHybridEngine > SuperHybridEngine**.
- Right-click the Super Hybrid Engine icon in the Notification area, and select a preferred power mode.



## Super Hybrid Engine Modes



**Auto High Performance** and **Auto Power-Saving** mode are available only when applying or removing the power adapter.



If your external monitor functions abnormally in **Power Saving** mode at a resolution of 1024 x 768 pixels or higher, press <Fn> + <F5> repeatedly to switch the display mode to **LCD Only** or **LCD + CRT Clone** and reset the power mode to **High Performance** or **Super Performance**.



## Eee Storage

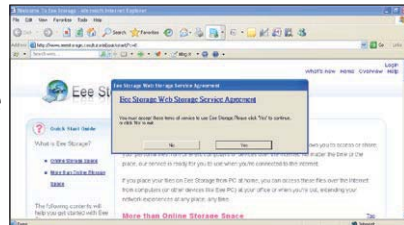
Eee PC users can enjoy free online space. With Internet connection, you can access and share any files whenever you want and wherever you are.



The content of the free service provided to you is subject to **Eee Storage Web Hard Drive Service Agreement** on Eee Storage official website. Eee Storage reserves the rights to modify or discontinue the provided web storage service with or without further notice. Visit the official website for details.

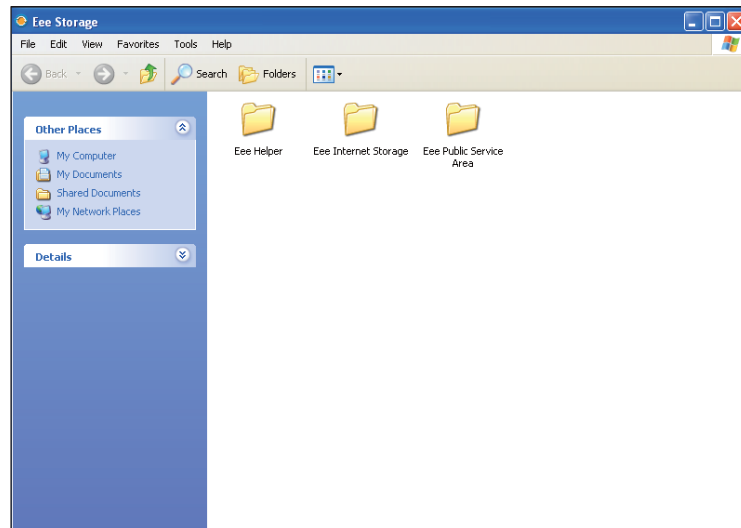
To use Eee Storage

1. Double-click the **Eee Storage** shortcut on the desktop, and read the service agreement before clicking **Yes** to continue.

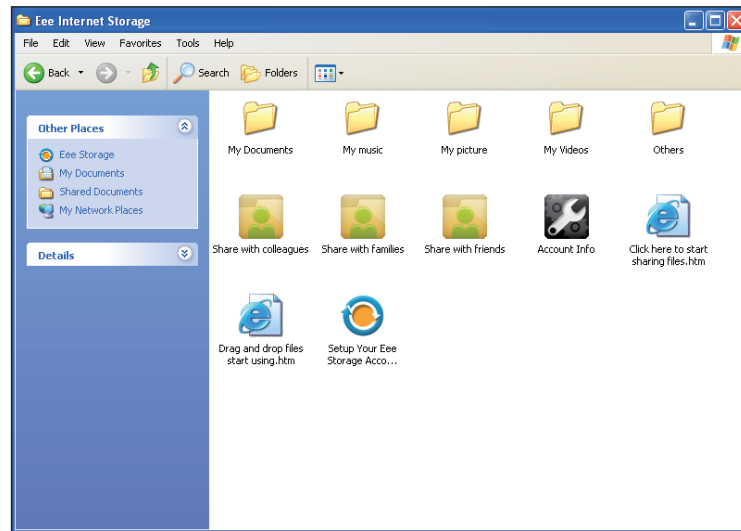


Ensure that your Eee PC is connected to the Internet.

2. Double-click **Eee Internet Storage**.



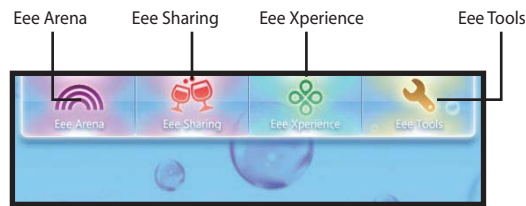
3. You can easily drag and drop to upload files onto your free online space.



Double-click **Setup Your Eee Storage Account information** in the **Web Storage** folder to apply an account and setup a password if you need to use more advanced functions. This set of account and password is also indispensable when you use Eee Storage service with other computer.

## Eee Docking Touch

Eee Docking Touch contain multiple useful functions. The Eee Docking Touch tool bar is at the top of the desktop.



### Eee Arena

#### Eee Arena

Eee Arena allows you to enjoy online entertainment contents including Radio, Live TV and Games, etc.



---

The Eee Arena service contents differ for each territory.

---

#### Game Park

Game Park includes multiple interesting games.

#### Eee Download

Eee Download offers various software applications and multimedia enjoyment online.



---

Refer to the help file in each function for more detailed instructions.

---

### Eee Sharing

#### Data Sync

Data Sync allows you to easily synchronize the data on your Eee PC with another PC (station PC) at home or in the office under the same network segment.

### **EzMessenger**

EzMessenger allows you to chat and share files with another Eee PC user under the same network segment.

### **Eee Storage**

Eee PC users can enjoy free online space. With Internet connection, you can access and share any files whenever you want and wherever you are. The Ee Storage help file is accessible only when your Eee PC connects to the Internet.

### **Eee Xperience**

#### **SRS Premium Sound**

SRS Premium offers the rich and immerse audio experience in any listening environment.

#### **DVD Player**

Use the InterVideo® WinDVD® for your audio and video enjoyment.

### **Eee Tools**

#### **Live Update**

Keeps your Eee PC up-to-date by checking the online updates.

#### **SoftStylus**

SoftStylus is a finger-writing recognition application that enables you to write down messages, e-mails, and other notes on the touchpad with your finger . There is also a virtual keyboard available for you to type.



Refer to the help file in each function for more detailed instructions.

---

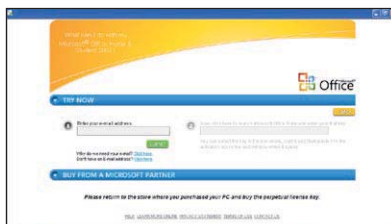
## Microsoft® Office Trial

Eee PC users can enjoy Microsoft Office Suite free trial for 60 days. Do the following instructions to start the free trial.

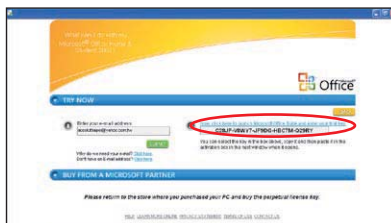
1. Ensure that your Eee PC is connected to the Internet and double-click **Microsoft Office 60 Day Trial - Online** on the desktop.
2. Click **TRY NOW**.



3. Enter your E-mail address and click **SUBMIT**.



4. Copy your product key and click the link.



5. Enter your product key and follow the onscreen instructions to finish the activation process before starting the free trial.



If you want to use other applications in the Microsoft Office Suite, click **start** and point to **All Programs > Microsoft Office** to select a desired application.



**Support DVD information**

**System Recovery**

**Boot Booster**

**Support DVD and  
System Recovery**

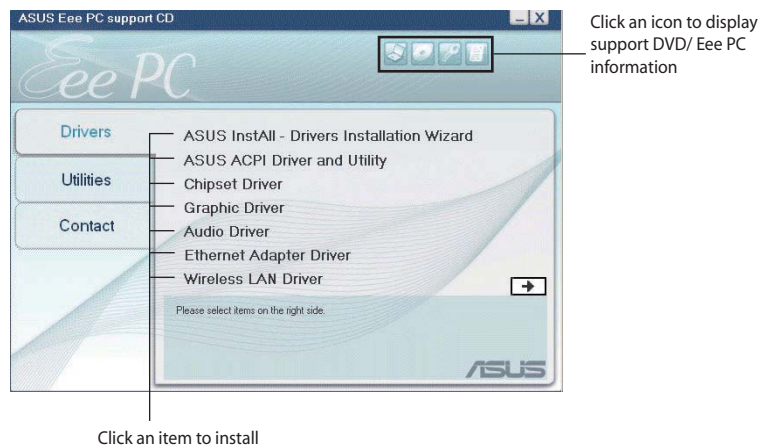


## Support DVD information

The support DVD that comes with the Eee PC package contains the drivers, software applications, and utilities that you can install to avail all the features.

### Running the support DVD

Insert the support DVD in the external optical drive. The DVD automatically displays the Drivers menu if Autorun is enabled in your computer.



If Autorun is NOT enabled in your computer, browse the contents of the support DVD to locate the file ASSETUP.EXE from the BIN folder. Double-click the ASSETUP.EXE file to run the DVD.



The drivers and utilities bundled in the support DVD may vary by models and are subject to change without notice.



## Drivers menu

The Drivers menu shows available device drivers when the system detects installed devices. Install the necessary drivers to activate the devices.

## Utilities menu

The Utilities menu shows the applications that the Eee PC supports.

## Contact

Click the Contact tab to display the ASUS contact information.

## Other information

The icons on the top right corner of the screen provide additional information on the Eee PC and the contents of the support DVD. Click an icon to display the specified information.



**System information**



**Technical support**



**DVD content**



**File list**

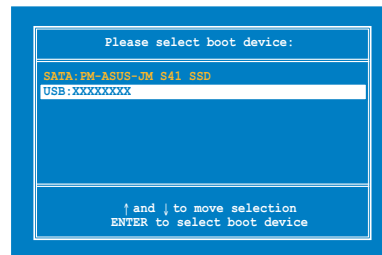
# System Recovery

## Using the Support DVD

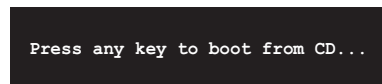
The Support DVD includes an image of the operating system, installed on your system at the factory. The Support DVD provides a comprehensive recovery solution that quickly restores your system to its original working state, provided that your system drive is in good working order. Before using the Support DVD, copy your data files to USB storage devices or to a network drive and make note of any customized configuration settings (such as network settings).

1. Connect an external optical drive to your Eee PC and insert the Support DVD into the optical drive (System needs to be powered ON).

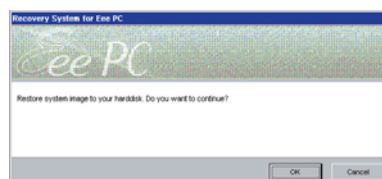
2. Press <ESC> on bootup and the **Please select boot device** screen appears. Select USB:XXXXXX (may be labeled as the ODD brand name) to boot from the optical drive.



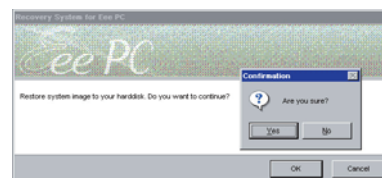
3. Press any key to boot from the optical drive.



4. Click **OK** in the **Recovery System for Eee PC** dialog box.



5. Click **Yes** to start the system recovery.





---

You will lose all your data during the system recovery. Ensure to back up your important data before recovering your system.

---

6. After the system recovery is completed, eject the the Support DVD from the optical drive and click **OK** to restart the Eee PC.



## Boot Booster

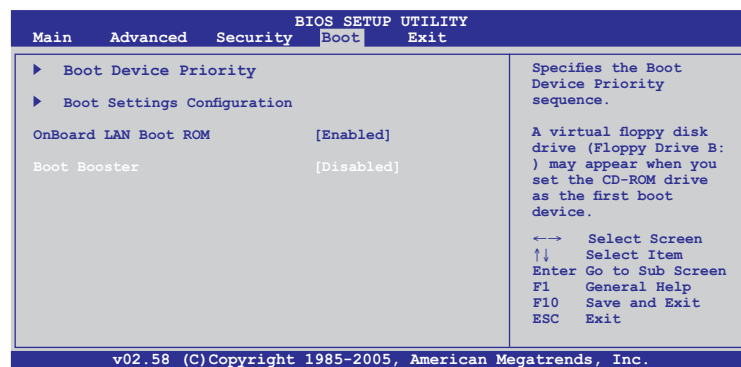
The Boot Booster item in BIOS setup helps shorten your Eee PC bootup time. However, you **MUST** disable this BIOS item before you change any Eee PC components or perform system recovery (from USB flash disk, external optical drive or hidden partition). Follow the instructions below to disable Boot Booster:

1. Start the system and press **<F2>** on bootup to show the POST screen. Press **<F2>** again to enter the BIOS setup.



If you fail to see the POST screen or enter the BIOS setup by doing the instruction above, restart the system and try pressing **<F2>** repeatedly on bootup.

2. Set **Boot Booster** to [Disabled]



3. Press **<F10>** to save the configuration and restart Eee PC.



Remember to enable Boot Booster after you complete hardware change or system recovery.

**Declarations and Safety Statements**

**Copyright Information**

**Limitation of Liability**

**Service and Support**

**Appendix**

A large, light grey, sans-serif letter 'A' is positioned behind the word 'Appendix', serving as a decorative background element for the section title.

## Declarations and Safety Statements

### Federal Communications Commission Statement

This device complies with FCC Rules Part 15. Operation is subject to the following two conditions:

- This device may not cause harmful interference, and
- This device must accept any interference received, including interference that may cause undesired operation.

This equipment has been tested and found to comply with the limits for a class B digital device, pursuant to Part 15 of the Federal Communications Commission (FCC) rules. These limits are designed to provide reasonable protection against harmful interference in a residential installation. This equipment generates, uses, and can radiate radio frequency energy and, if not installed and used in accordance with the instructions, may cause harmful interference to radio communications. However, there is no guarantee that interference will not occur in a particular installation. If this equipment does cause harmful interference to radio or television reception, which can be determined by turning the equipment off and on, the user is encouraged to try to correct the interference by one or more of the following measures:

- Reorient or relocate the receiving antenna.
- Increase the separation between the equipment and receiver.
- Connect the equipment into an outlet on a circuit different from that to which the receiver is connected.
- Consult the dealer or an experienced radio/TV technician for help.



---

The use of a shielded-type power cord is required in order to meet FCC emission limits and to prevent interference to the nearby radio and television reception. It is essential that only the supplied power cord be used. Use only shielded cables to connect I/O devices to this equipment. You are cautioned that changes or modifications not expressly approved by the party responsible for compliance could void your authority to operate the equipment.

---

(Reprinted from the Code of Federal Regulations #47, part 15.193, 1993.  
Washington DC: Office of the Federal Register, National Archives and  
Records Administration, U.S. Government Printing Office.)

## **FCC Radio Frequency (RF) Exposure Caution Statement**



---

Any changes or modifications not expressly approved by the party responsible for compliance could void the user's authority to operate this equipment. "The manufacture declares that this device is limited to Channels 1 through 11 in the 2.4GHz frequency by specified firmware controlled in the USA."

---

This equipment complies with FCC radiation exposure limits set forth for an uncontrolled environment. To maintain compliance with FCC RF exposure compliance requirements, please avoid direct contact to the transmitting antenna during transmitting. End users must follow the specific operating instructions for satisfying RF exposure compliance.

### **Eee PC T91**

Max. SAR Measurement (1g)

AR5B95 (AW-NE785H)

11b: 0.844 W/kg

11g: 0.457 W/kg

11n 20M: 0.314 W/kg

11n 40M: 0.258 W/kg

## **Declaration of Conformity (R&TTE directive 1999/5/EC)**

The following items were completed and are considered relevant and sufficient:

- Essential requirements as in [Article 3]
- Protection requirements for health and safety as in [Article 3.1a]
- Testing for electric safety according to [EN 60950]
- Protection requirements for electromagnetic compatibility in [Article 3.1b]
- Testing for electromagnetic compatibility in [EN 301 489-1] & [EN 301 301]
- Testing according to [489-17]
- Effective use of the radio spectrum as in [Article 3.2]
- Radio test suites according to [EN 300 328-2]

## **CE Mark Warning**

This is a Class B product, in a domestic environment, this product may cause radio interference, in which case the user may be required to take adequate measures.

## **IC Radiation Exposure Statement for Canada**

This equipment complies with IC radiation exposure limits set forth for an uncontrolled environment. To maintain compliance with IC RF exposure compliance requirements, please avoid direct contact to the transmitting antenna during transmitting. End users must follow the specific operating instructions for satisfying RF exposure compliance.

Operation is subject to the following two conditions:

- This device may not cause interference and



- This device must accept any interference, including interference that may cause undesired operation of the device.

To prevent radio interference to the licensed service (i.e. co-channel Mobile Satellite systems) this device is intended to be operated indoors and away from windows to provide maximum shielding. Equipment (or its transmit antenna) that is installed outdoors is subject to licensing.

**Eee PC T91**

Max. SAR Measurement (1g)

AR5B95 (AW-NE785H)

11b: 0.844 W/kg

11g: 0.457 W/kg

11n 20M: 0.314 W/kg

11n 40M: 0.258 W/kg

This device and its antenna(s) must not be co-located or operating in conjunction with any other antenna or transmitter.

Country Code selection feature to be disabled for products marketed to the US/CANADA.

This Class [B] digital apparatus complies with Canadian ICES-003.  
Cet appareil numérique de la classe [B] est conforme à la norme NMB-003 du Canada

## Wireless Operation Channel for Different Domains

|             |                 |                   |
|-------------|-----------------|-------------------|
| N. America  | 2.412-2.462 GHz | Ch01 through CH11 |
| Japan       | 2.412-2.484 GHz | Ch01 through Ch14 |
| Europe ETSI | 2.412-2.472 GHz | Ch01 through Ch13 |

## France Restricted Wireless Frequency Bands

Some areas of France have a restricted frequency band. The worst case maximum authorized power indoors are:

- 10mW for the entire 2.4 GHz band (2400 MHz–2483.5 MHz)
- 100mW for frequencies between 2446.5 MHz and 2483.5 MHz



---

Channels 10 through 13 inclusive operate in the band 2446.6 MHz to 2483.5 MHz.

---

There are few possibilities for outdoor use: On private property or on the private property of public persons, use is subject to a preliminary authorization procedure by the Ministry of Defense, with maximum authorized power of 100mW in the 2446.5–2483.5 MHz band. Use outdoors on public property is not permitted.

In the departments listed below, for the entire 2.4 GHz band:

- Maximum authorized power indoors is 100mW
- Maximum authorized power outdoors is 10mW

Departments in which the use of the 2400–2483.5 MHz band is permitted with an EIRP of less than 100mW indoors and less than 10mW outdoors:

|                   |             |                   |
|-------------------|-------------|-------------------|
| 01 Ain Orientales | 02 Aisne    | 03 Allier         |
| 05 Hautes Alpes   | 08 Ardennes | 09 Ariège         |
| 11 Aude           | 12 Aveyron  | 16 Charente       |
| 24 Dordogne       | 25 Doubs    | 26 Drôme          |
| 32 Gers           | 36 Indre    | 37 Indre et Loire |
| 41 Loir et Cher   | 45 Loiret   | 50 Manche         |

|                        |                          |                |
|------------------------|--------------------------|----------------|
| 55 Meuse               | 58 Nièvre                | 59 Nord        |
| 60 Oise                | 61 Orne                  | 63 Puy du Dôme |
| 64 Pyrénées Atlantique | 66 Pyrénées              | 67 Bas Rhin    |
| 68 Haut Rhin           | 70 Haute Saône           |                |
| 71 Saône et Loire      | 75 Paris                 |                |
| 82 Tarn et Garonne     | 84 Vaucluse              | 88 Vosges      |
| 89 Yonne               | 90 Territoire de Belfort |                |
| 94 Val de Marne        |                          |                |

This requirement is likely to change over time, allowing you to use your wireless LAN card in more areas within France. Please check with ART for the latest information ([www.art-telecom.fr](http://www.art-telecom.fr))



Your WLAN Card transmits less than 100mW, but more than 10mW.

## UL Safety Notices

Required for UL 1459 covering telecommunications (telephone) equipment intended to be electrically connected to a telecommunication network that has an operating voltage to ground that does not exceed 200V peak, 300V peak-to-peak, and 105V rms, and installed or used in accordance with the National Electrical Code (NFPA 70).

When using the Eee PC modem, basic safety precautions should always be followed to reduce the risk of fire, electric shock, and injury to persons, including the following:

- DO NOT use the Eee PC near water, for example, near a bath tub, wash bowl, kitchen sink or laundry tub, in a wet basement or near a swimming pool.
- DO NOT use the Eee PC during an electrical storm. There may be a remote risk of electric shock from lightning.
- DO NOT use the Eee PC in the vicinity of a gas leak.

Required for UL 1642 covering primary (nonrechargeable) and secondary (rechargeable) lithium batteries for use as power sources in products. These batteries contain metallic lithium, or a lithium alloy, or a lithium ion, and may consist of a single electrochemical cell or two or more cells connected in series, parallel, or both, that convert chemical energy into electrical energy by an irreversible or reversible chemical reaction.

- Do not dispose the Eee PC battery pack in a fire, as they may explode. Check with local codes for possible special disposal instructions to reduce the risk of injury to persons due to fire or explosion.
- Do not use power adapters or batteries from other devices to reduce the risk of injury to persons due to fire or explosion. Use only UL certified power adapters or batteries supplied by the manufacturer or authorized retailers.

## Power Safety Requirement

Products with electrical current ratings up to 6A and weighing more than 3Kg must use approved power cords greater than or equal to: H05VV-F, 3G, 0.75mm<sup>2</sup> or H05VV-F, 2G, 0.75mm<sup>2</sup>.



This symbol of the crossed out wheeled bin indicates that the product (electrical, electronic equipment, and mercury-containing button cell battery) should not be placed in municipal waste. Check local regulations for disposal of electronic products.

## REACH

Complying with the REACH (Registration, Evaluation, Authorisation, and Restriction of Chemicals) regulatory framework, we published the chemical substances in our products at ASUS REACH website at <http://green.asus.com/english/REACH.htm>.

## Nordic Lithium Cautions (for lithium-ion batteries)



CAUTION! Danger of explosion if battery is incorrectly replaced. Replace only with the same or equivalent type recommended by the manufacturer. Dispose of used batteries according to the manufacturer's instructions. (English)



ATTENZIONE! Rischio di esplosione della batteria se sostituita in modo errato. Sostituire la batteria con un una di tipo uguale o equivalente consigliata dalla fabbrica. Non disperdere le batterie nell'ambiente. (Italian)



VORSICHT! Explosionsgefahr bei unsachgemäßen Austausch der Batterie. Ersatz nur durch denselben oder einem vom Hersteller empfohlenem ähnlichen Typ. Entsorgung gebrauchter Batterien nach Angaben des Herstellers. (German)



ADVARSEL! Lithiumbatteri - Eksplosionsfare ved fejlagtig håndtering. Udskiftning må kun ske med batteri af samme fabrikat og type. Levér det brugte batteri tilbage til leverandøren. (Danish)



WARNING! Explosionsfara vid felaktigt batteribyte. Använd samma batterityp eller en ekvivalent typ som rekommenderas av apparattillverkaren. Kassera använt batteri enligt fabrikantens instruktion. (Swedish)



VAROITUS! Paristo voi räjähtää, jos se on virheellisesti asennettu. Vaihda paristo ainoastaan laitevalmistajan suositteluun tyyppiin. Hävitä käytetty paristo valmistajan ohjeiden mukaisesti. (Finnish)



ATTENTION! Il y a danger d'explosion s'il y a remplacement incorrect de la batterie. Remplacer uniquement avec une batterie du même type ou d'un type équivalent recommandé par le constructeur. Mettre au rebut les batteries usagées conformément aux instructions du fabricant. (French)



ADVARSEL! Eksplosjonsfare ved feilaktig skifte av batteri. Benytt samme batteritype eller en tilsvarende type anbefalt av apparatfabrikanten. Brukte batterier kasseres i henhold til fabrikantens instruksjoner. (Norwegian)



標準品以外の使用は、危険の元になります。交換品を使用する場合、製造者に指定されるものを使って下さい。製造者の指示に従って処理して下さい。(Japanese)

## Copyright Information

No part of this manual, including the products and software described in it, may be reproduced, transmitted, transcribed, stored in a retrieval system, or translated into any language in any form or by any means, except documentation kept by the purchaser for backup purposes, without the express written permission of ASUSTeK COMPUTER INC. ("ASUS").

ASUS PROVIDES THIS MANUAL "AS IS" WITHOUT WARRANTY OF ANY KIND, EITHER EXPRESS OR IMPLIED, INCLUDING BUT NOT LIMITED TO THE IMPLIED WARRANTIES OR CONDITIONS OF MERCHANTABILITY OR FITNESS FOR A PARTICULAR PURPOSE. IN NO EVENT SHALL ASUS, ITS DIRECTORS, OFFICERS, EMPLOYEES OR AGENTS BE LIABLE FOR ANY INDIRECT, SPECIAL, INCIDENTAL, OR CONSEQUENTIAL DAMAGES (INCLUDING DAMAGES FOR LOSS OF PROFITS, LOSS OF BUSINESS, LOSS OF USE OR DATA, INTERRUPTION OF BUSINESS AND THE LIKE), EVEN IF ASUS HAS BEEN ADVISED OF THE POSSIBILITY OF SUCH DAMAGES ARISING FROM ANY DEFECT OR ERROR IN THIS MANUAL OR PRODUCT.

Products and corporate names appearing in this manual may or may not be registered trademarks or copyrights of their respective companies, and are used only for identification or explanation and to the owners' benefit, without intent to infringe.

SPECIFICATIONS AND INFORMATION CONTAINED IN THIS MANUAL ARE FURNISHED FOR INFORMATIONAL USE ONLY, AND ARE SUBJECT TO CHANGE AT ANY TIME WITHOUT NOTICE, AND SHOULD NOT BE CONSTRUED AS A COMMITMENT BY ASUS. ASUS ASSUMES NO RESPONSIBILITY OR LIABILITY FOR ANY ERRORS OR INACCURACIES THAT MAY APPEAR IN THIS MANUAL, INCLUDING THE PRODUCTS AND SOFTWARE DESCRIBED IN IT.

**Copyright © 2009 ASUSTeK COMPUTER INC. All Rights Reserved.**

## **Limitation of Liability**

Circumstances may arise where because of a default on ASUS' part or other liability, you are entitled to recover damages from ASUS. In each such instance, regardless of the basis on which you are entitled to claim damages from ASUS, ASUS is liable for no more than damages for bodily injury (including death) and damage to real property and tangible personal property; or any other actual and direct damages resulted from omission or failure of performing legal duties under this Warranty Statement, up to the listed contract price of each product.

ASUS will only be responsible for or indemnify you for loss, damages or claims based in contract, tort or infringement under this Warranty Statement.

This limit also applies to ASUS' suppliers and its reseller. It is the maximum for which ASUS, its suppliers, and your reseller are collectively responsible.

UNDER NO CIRCUMSTANCES IS ASUS LIABLE FOR ANY OF THE FOLLOWING: (1) THIRD-PARTY CLAIMS AGAINST YOU FOR DAMAGES; (2) LOSS OF, OR DAMAGE TO, YOUR RECORDS OR DATA; OR (3) SPECIAL, INCIDENTAL, OR INDIRECT DAMAGES OR FOR ANY ECONOMIC CONSEQUENTIAL DAMAGES (INCLUDING LOST PROFITS OR SAVINGS), EVEN IF ASUS, ITS SUPPLIERS OR YOUR RESELLER IS INFORMED OF THEIR POSSIBILITY.

## **Service and Support**

Visit our multi-language web site at <http://support.asus.com>