


## Listening to music using the stereo headphones

 [GAVDP](#) [A2DP](#) [AVRCP](#)

This section describes how to use the stereo headphones to listen to your favourite music or other audio files stored on your PC.

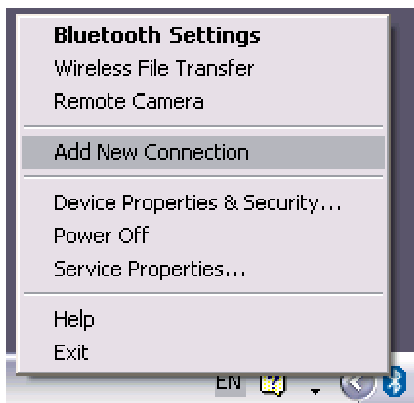


- [Configuring the stereo headphones](#)
- [Connecting to the stereo headphones](#)
- [Listening to music or other audio files](#)
- [Playing music using remote control](#)
- [Copyright protection function](#)

### **Configuring the stereo headphones**

 Procedure

1. **Right-click on the Bluetooth icon in the task tray, and click on [Add New Connection].**



 Note

- Alternatively, click [Start] [\[All Programs\]](#) [\[Bluetooth\]](#) [\[Bluetooth Settings\]](#), and then click on [New Connection] from the [Bluetooth Settings] screen that has opened.

The [Add New Connection Wizard (Welcome to the Add New Connection Wizard)] will appear.

- 2. Switch ON the stereo headphones and activate "Discoverable" mode**  
Please refer to the user guide for the stereo headphones for further information on how to operate them.
- 3. Confirm that [Express Mode] has been selected, and then click on the [Next] button**

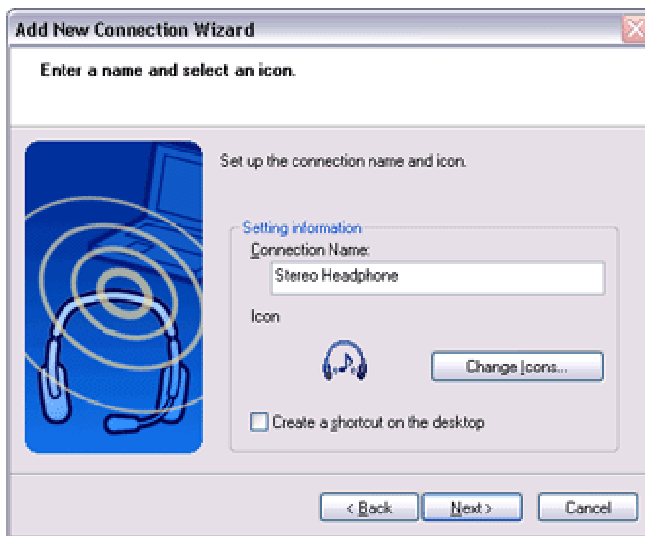


The [Add New Connection Wizard (Searching for Bluetooth Devices)] screen will appear.



Once the search for the devices has ended, the [Add New Connection Wizard (Select Device)] screen will appear.

4. **Select the device name of the stereo headphones from the list, and click on the [Next] button**



The [Add New Connection Wizard (Searching for Services)] screen will appear.

5. **Configure the type and name of the icon to appear once registration is complete, and click on the [Next] button**

Please click the [Next] button once you are satisfied with the configuration.



The [Add New Connection Wizard (Configure Connection Name)] screen will appear.

#### 6. Click on the [Finish] button

The settings will be registered, and the icon will appear on the [Bluetooth Settings] screen.



### Connecting to the stereo headphones

You can connect to the stereo headphones from the icon registered in [Bluetooth Settings]. Please refer to the user guide for information on how to make a connection from the stereo headphones.

### Important

- Please close the following audio applications before any connection is made between your stereo headphones and PC.
  - Music/video playback applications
  - e-Conferencing applications
  - Voice-recognition applications

Please finish connecting the stereo headphones before launching any of these applications.

## 🔴 Listening to music or other audio files

### 1. Playing music or other audio files on your PC

#### 🌟 Important

- Please confirm the points below if you are unable to hear anything despite having properly connected the stereo headphones.

Click [Start] □ [All Programs] □ [Accessories] □ [Entertainment] □ [Volume Control].

Remove the tick next to [Mute] if it has been ticked. If the volume is at its lowest setting, please adjust it to an appropriate level.

- Music playback may be interrupted if other Bluetooth devices are currently connected to your PC. When you are listening to music, it is recommended that the stereo headphones be the only connected device.
- Music playback may be interrupted if you are some distance away from the PC, or if there are any obstructions between you and the PC.
- If you are unable to hear any sound out of your stereo headphones while music or audio is currently playing in a related application, please stop the files being played, open [Sounds and Audio Devices] from the Control Panel, and change the default device to "Toshiba Bluetooth Wave."

If you are still unable to hear any sound from the stereo headphones even after having set "Toshiba Bluetooth Wave" as the default device, please re-launch the application.



### 2. Finishing listening to music and disconnecting

- 1. Right-click on the icon for the currently connected mode from [Bluetooth Settings] on your PC, and click on "Disconnect."**  
A message confirming the disconnection may appear.
- 2. Click on the "Yes" button after having followed the instructions in the message.**  
The icon will indicate that the device has been disconnected.

### Important

- Please close the following audio applications before you disconnect the stereo headphones from your PC:
  - Music/video playback applications
  - e-Conferencing applications
  - Voice-recognition applications

Please completely disconnect the stereo headphones before launching any of these applications.

Please refer to the user guide for information on terminating a connection from the stereo headphones.

### Playing music using remote control

Music applications and video playback applications installed on your PC (e.g., "Windows Media Player 9" and "InterVideo WinDVD") may be operated with the remote control button/switch on your stereo headphones.

The remote control used with the stereo headphones must be compliant with the Bluetooth AVRCP profile. Please refer to the headphones user guide for further information.

You can configure the application to be operated using the switch/button according to the following procedure.

#### Procedure

- 1. Double-click on the Bluetooth icon in the taskbar**  
Launches "Bluetooth Settings."
- 2. Click on [Bluetooth] [Select AV Player] from the menu bar**  
The [Select AV Player] screen will appear.
- 3. Select the application, and click on the [OK] button**

The functions and switch/button that can be operated may differ depending on the application used for music/video playback as well as the version.

The procedure below can be performed in order to change the position where the receive command is displayed or to not have the command displayed.

## Procedure

- 1. Double-click on the Bluetooth icon in the taskbar**  
Launches "Bluetooth Settings."
- 2. Click on [Bluetooth] [Select AV Player] from the menu bar.**  
The [Select AV Player] screen will appear.
- 3. Select the appropriate item from the pull-down menu of positions where the receive command is to be displayed, and then click on the [OK] button.**

If the receive command appears but does not function properly, sometimes the problem may be rectified by changing the setting to "Do not display."

The commands supported by this application are shown below. Please refer to the headphone user guide for commands that are supported by the stereo headphones. Problems with operation may be encountered with certain versions of "Windows Media Player 9" and "InterVideo WinDVD."

### [Windows Media Player 9]

- Play
- Stop
- Pause
- Next
- Previous
- Fast forward
- Rewind

### [InterVideo WinDVD]

- Play
- Stop
- Pause
- Next chapter
- Previous chapter
- Fast Forward
- Fast Backward
- Up
- Down
- Left

- Right
- Select
- Root menu
- Angle

## Copyright protection function

A copyright protection function is supported according to the SCMS-T format as defined in the Bluetooth specifications. Follow the configuration procedure below to establish connections only with devices that support this function.

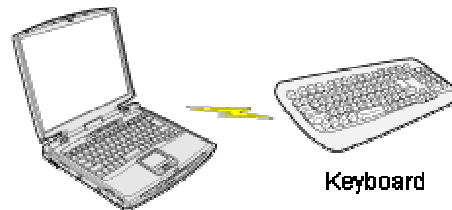
### Procedure

- 1. Double-click on the Bluetooth icon in the task tray.**  
Launches "Bluetooth Settings."
- 2. Select [Bluetooth] from the menu, and click on [Copyright Protection Setting].**  
The copyright protection dialog will appear.
- 3. Tick the box next to "Only connect to devices that are copyright-protected under the SCMS-T format," and click on the OK button.**



## Using a wireless keyboard [\[HID\]](#)

This section describes how to connect a Bluetooth-compatible keyboard to a PC.



### Setting up the wireless keyboard

#### Procedure

1. **Right-click on the Bluetooth icon in the task tray, and then click on [Add New Connection]**



#### Note

- Alternatively, click [Start] □ [All Programs] □ [Bluetooth] □ [Bluetooth Settings], and then click on [New Connection] from the active [Bluetooth Settings] window.

The [Add New Connection Wizard (Welcome to the Add New Connection Wizard)] window will appear.

2. **Confirm that [Express Mode] has been selected, and then click on the [Next] button**



The [Add New Connection Wizard (Searching for Bluetooth devices)] window will appear.



Once the program has finished searching for the devices, the [Add New Connection Wizard (Device Selection)] window will appear.

3. **Select the device name of the keyboard from [Device List], and then click on the [Next] button**



The [Add New Connection Wizard (Searching for Services)] window will appear.



4. Use the wireless keyboard to enter the numbers that appear in [Bluetooth Passkey (PIN Code)], and then hit the [Enter] key



Once the program has detected the services successfully, connection to the device and registration of settings information will be performed automatically.



The [Add New Connection Wizard (Connection Name Settings)] window will appear.

5. **Enter the type and name of the icon displayed after registration, and then click on the [Next] button**

Please click on the [Next] button if you are satisfied with the settings.



 Note

- You can change the connection icon and icon name.
  - "[Changing a connection icon name](#)"
  - "[Changing a connection icon](#)"

The [Add New Connection Wizard (Completing the Add New Connection Wizard)] window will appear.

6. **Click on the [Finish] button**

The settings information will be registered, and an icon will appear in the [Bluetooth Settings] window.

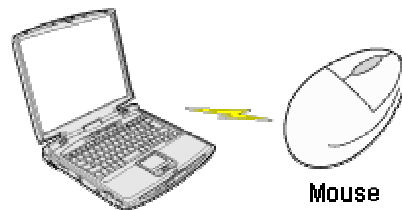


 Note

- Pressing any key on the wireless keyboard will automatically connect it to the PC thereafter.  
Please connect [manually](#) if automatic connection is unsuccessful.

## Using a wireless mouse [\[HID\]](#)

This section describes how to connect a Bluetooth-compatible mouse to a PC.



### Setting up the wireless mouse

#### Procedure

- 1. Turn on the wireless mouse, and set it to be connectable via Bluetooth**  
Please refer to the instruction manual for details on how to operate the mouse.
- 2. Right-click on the Bluetooth icon in the task tray, and then click on [Add New Connection]**



#### Note

- Alternatively, click [Start] □ [All Programs] □ [Bluetooth] □ [Bluetooth Settings], and then click on [New Connection] from the active [Bluetooth Settings] window.

The [Add New Connection Wizard (Welcome to the Add New Connection Wizard)] window will appear.

3. Confirm that [Express Mode] has been selected, and then click on the [Next] button



The [Add New Connection Wizard (Searching for Bluetooth devices)] window will appear.



Once the program has finished searching for the devices, the [Add New Connection Wizard (Device Selection)] window will appear.

4. Select the device name of the mouse from [Device List], and then click on the [Next] button



The [Add New Connection Wizard (Searching for Services)] window will appear.



A message confirming a device connection will appear.

5. Click on the [OK] button





The [Add New Connection Wizard (Connection Name Settings)] window will appear.

6. **Enter the type and name of the icon displayed after registration, and then click on the [Next] button**

Please click on the [Next] button if you are satisfied with the settings.



 Note

- Please use this window to change the connection name and icon.
  - [Changing the connection icon name](#)
  - [Changing the connection icon](#)

The [Add New Connection Wizard (Completing the Add New Connection Wizard)] window will appear.

7. **Click on the [Finish] button**

The settings information will be have been registered, and an icon will appear in the [Bluetooth Settings] window.



BT-Mouse-01

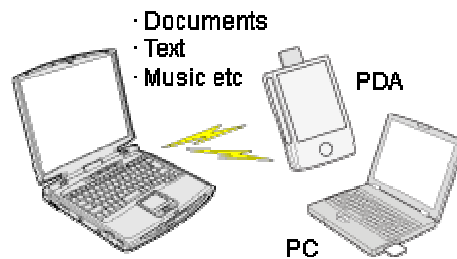
 Note

- Clicking on one of the mouse buttons or otherwise operating it will automatically connect it to the PC thereafter. Please connect [manually](#) if automatic connection is unsuccessful.

## Exchanging files with a PC or PDA [\[FTP\]](#)

You can send and receive files other than business card data with a Bluetooth-enabled PC or PDA.

Use "File transfer" in the Bluetooth Information Exchanger to exchange files.



### Note

- The same operations will be valid as long as the PC and PDA support the FTP profile.
- "File transfer" cannot be used to send or receive business card data. Please instead use "Object Push" to perform these activities.

- [Sending files to a PC or PDA \(using icons\)](#)
- [Sending files to a PC or PDA \(by right-clicking the mouse\)](#)
- [Receiving files from a PC or PDA](#)

### Procedure

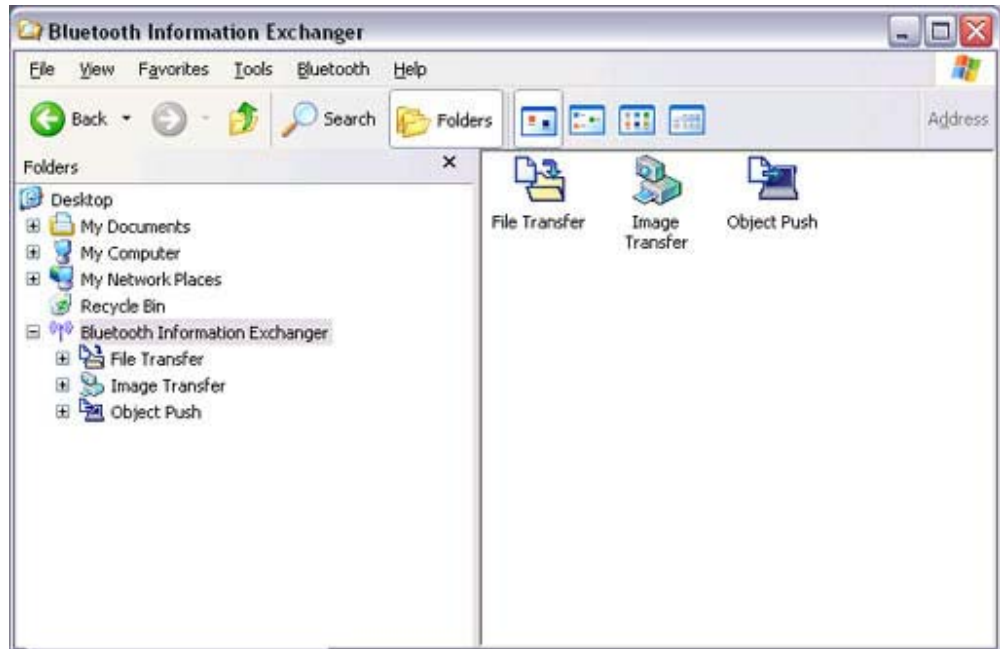
#### Sending files to a PC or PDA (using icons)

- 1. Turn on the PC or PDA**
- 2. Double-click on the Bluetooth Information Exchanger icon on the Desktop**



### Note

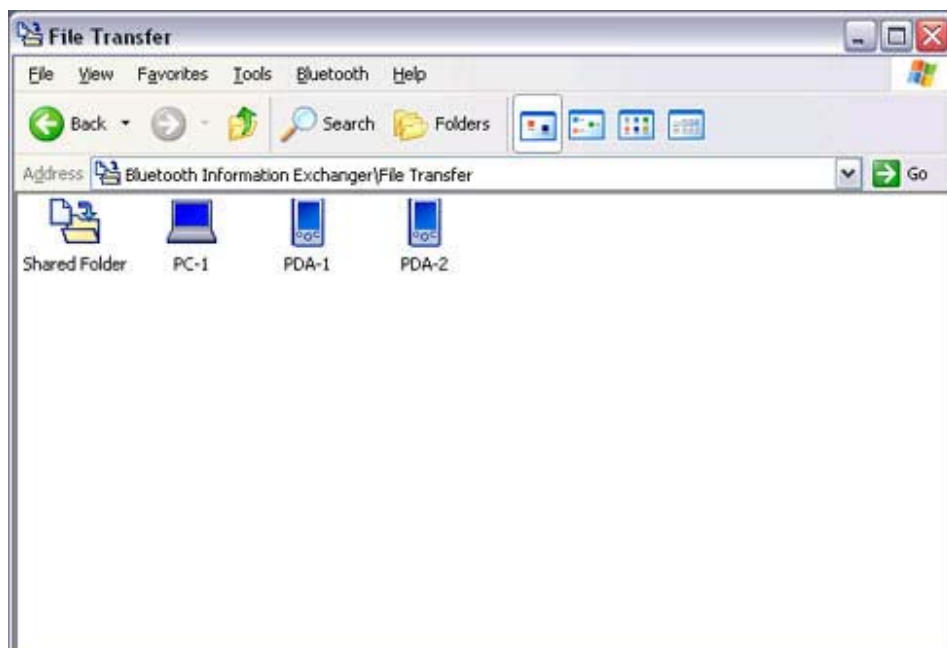
- Alternatively, opening Explorer and clicking on the Bluetooth Information Exchanger folder will produce the same result.



The [Bluetooth Information Exchanger] window will appear.

3. **Double-click on the [File transfer] icon**

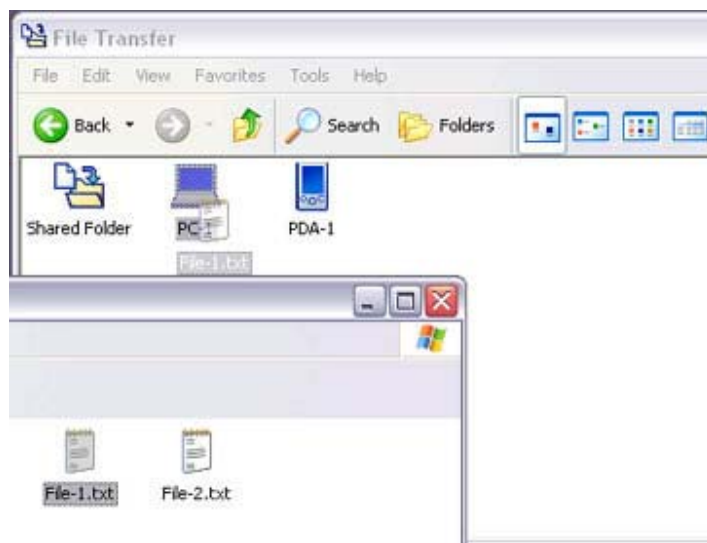
A list of devices will appear in the [File transfer] window.



 Note

- If the desired device does not appear in the list, please confirm that the device has been turned on, and then select [Bluetooth]  [Search Devices]. A device search will be performed.
  - You can also use "Image transfer" when sending individual image files.
4. **Use the mouse to drag and drop the file you wish to send over the destination icon**

In this case, the file will be sent to a PC named "PC-1".

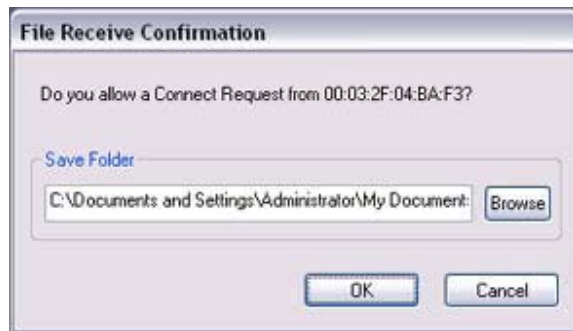


 Note

- When using "File transfer", you can send individual files as well as entire folders.
5. **Confirm that the file is being sent**  
The file will be sent to the PC.

 Note

- When sending files using "File transfer", a message requesting permission to receive the files may appear on the destination (receiving) device. The content of the message will vary with the Bluetooth software installed on the destination device, so please be sure to follow the instructions provided.  
If you are using the Bluetooth Utility, a message similar to the one below will appear.



If the file has been sent successfully, the message below will appear. Please click on the [OK] button.

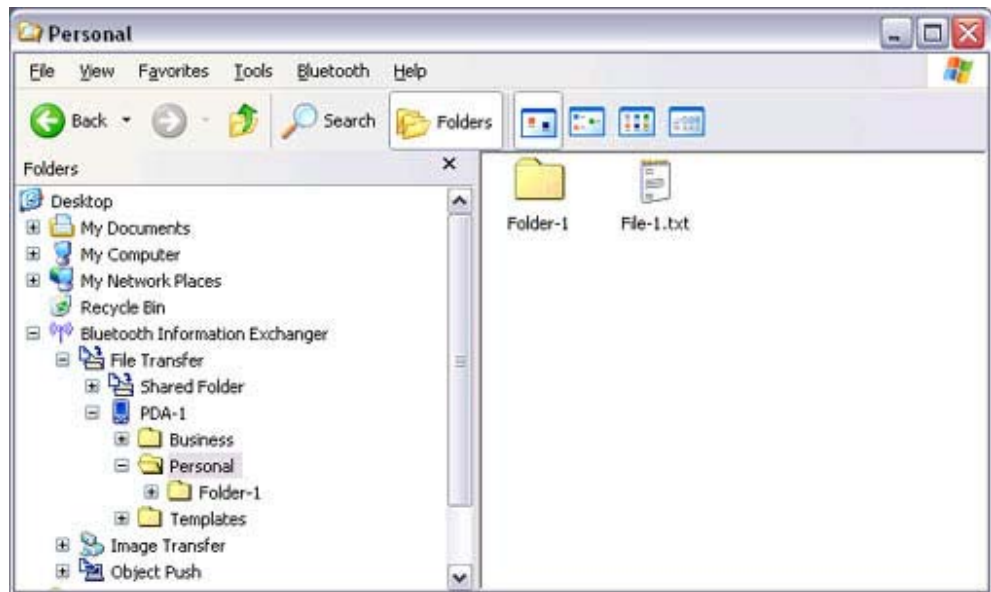


The message below will appear if the file transmission was unsuccessful. Please click on the [OK] button to close the message, and repeat the procedure.



#### Note

- Files that have been sent will be saved in a file transfer shared folder on the destination device.
- Additionally, with "File transfer", you can open the shared folder on the destination device using Explorer, specify a subfolder, and then send the file there.



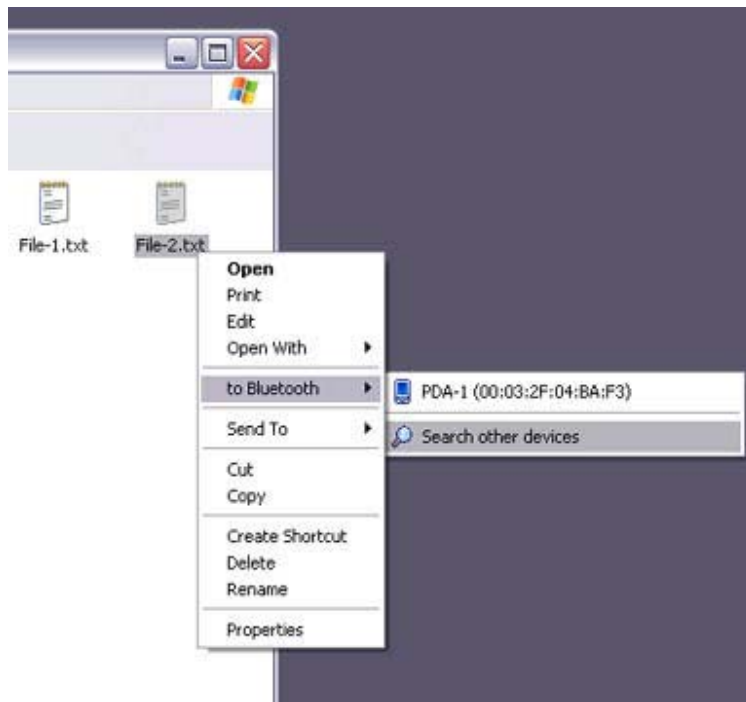
- You can use [Properties](#) in the Bluetooth Information Exchanger to change the location of the "Shared folder" on the hard drive.

### **Sending files to a PC or PDA (by right-clicking the mouse)**

#### **1. Turn on the PC or PDA**

Confirm that a Bluetooth connection has been enabled before proceeding.

#### **2. Right-click on the file you wish to send, and then select its destination from [to Bluetooth]**

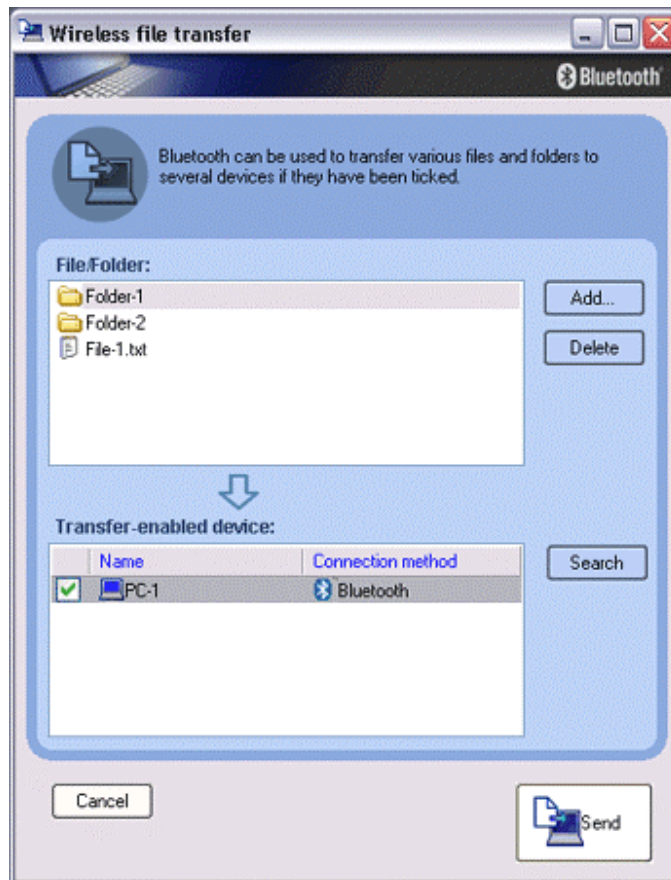


#### Note

- If the desired device does not appear in the list, please confirm that the device has been turned on, and then select [to Bluetooth]  [Search other devices].

Once the devices have been detected, the message below will appear.  
Please select the destination device, and then click on the [Send] button.



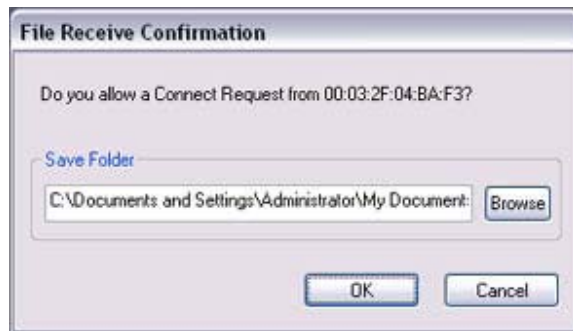


3. **Confirm that the file is being sent**

The file will be sent to the PC.

 Note

- When sending files using "File transfer", a message requesting permission to receive the files may appear on the destination (receiving) device. The content of the message will vary with the Bluetooth software installed on the destination device, so please be sure to follow the instructions provided.  
If you are using the Bluetooth Utility, a message similar to the one below will appear.



If the file has been sent successfully, the message below will appear. Please click on the [OK] button.



The message below will appear if the file transmission was unsuccessful. Please click on the [OK] button to close the message, and then repeat the procedure.



 Note

- Files that have been sent will be saved in a file transfer shared folder on the destination device.

### **Receiving files from a PC or PDA**

Your PC is able to receive files that have been saved in the shared folder on the destination PC or PDA. Received files will be saved in the shared folder under "File transfer".

#### **1. Turn on the PC or PDA**

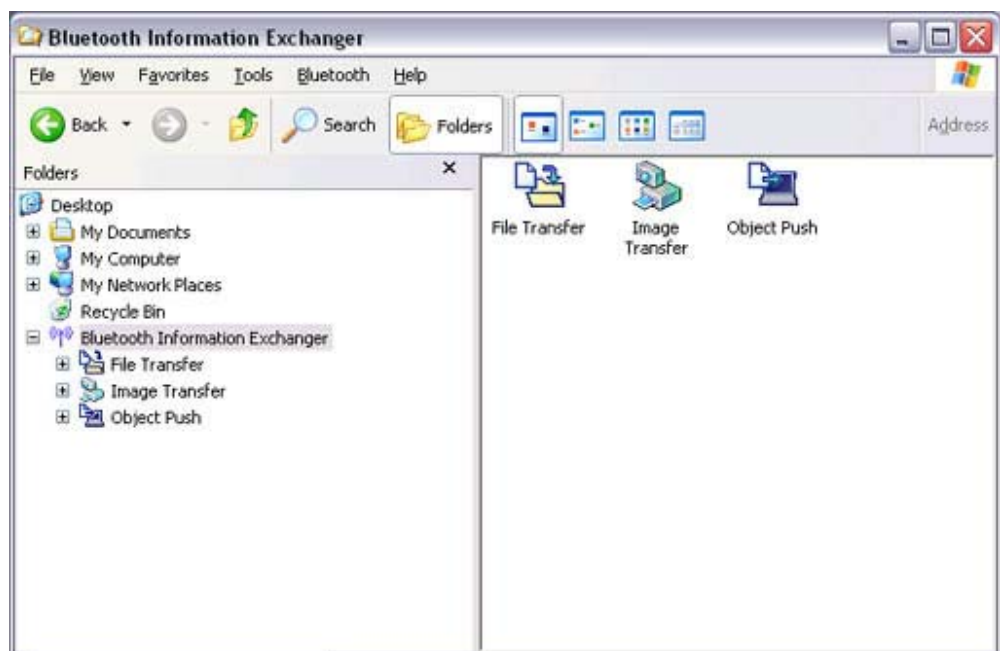
Confirm that a Bluetooth connection has been enabled before proceeding.

## 2. Double-click on the Bluetooth Information Exchanger icon on the Desktop



### Note

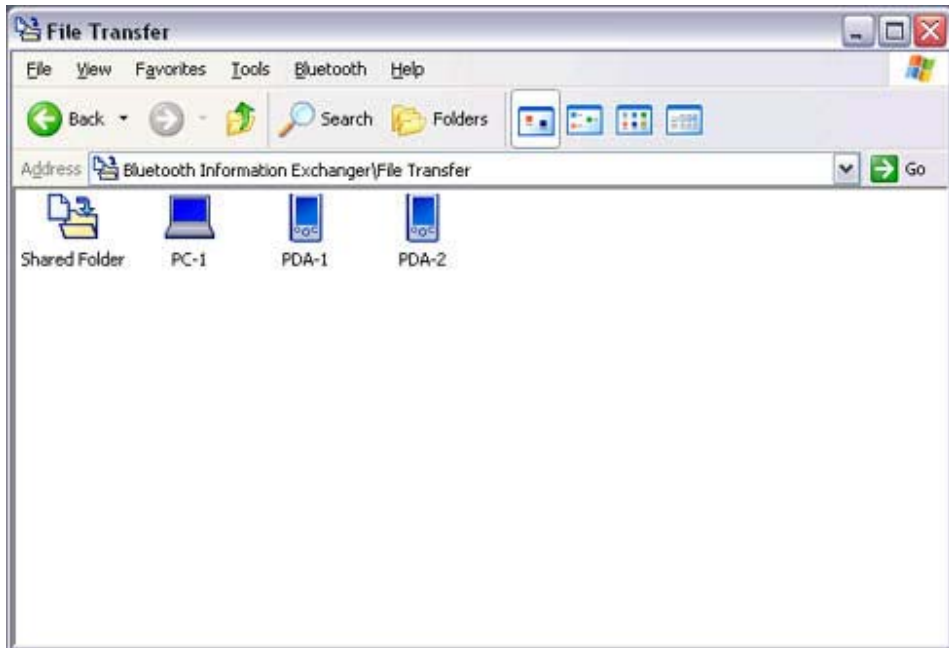
- Alternatively, opening Explorer and clicking on the Bluetooth Information Exchanger folder will produce the same result.



The [Bluetooth Information Exchanger] window will appear.

## 3. Double-click on the [File transfer] icon

A list of devices will appear in the [File transfer] window.

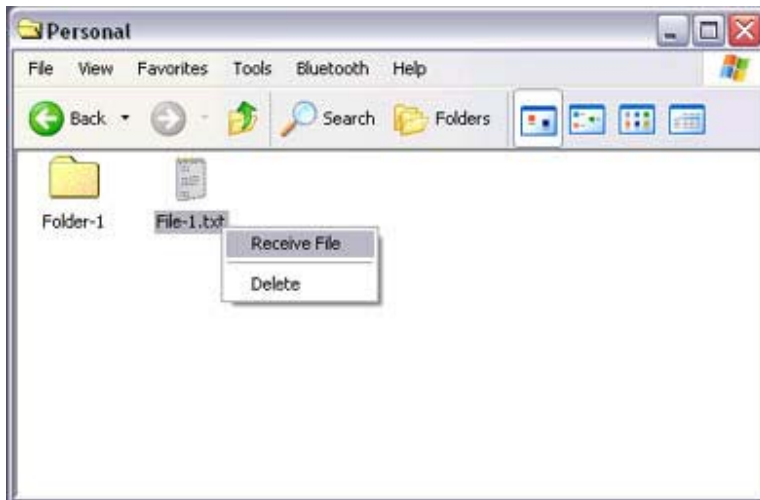


In this case, the file will be received from the PDA named "My Mobile".

**4. Double-click on the [PDA-1] icon**

The file saved in the shared folder in "My Mobile" will appear.

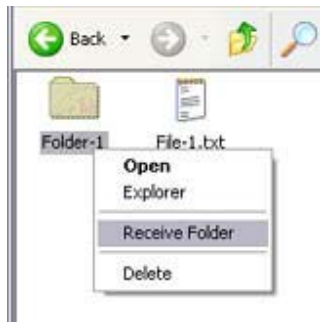
**5. Right-click on the file you wish to receive, and then select "Receive file".**



The file will be received from a PDA.

 Note

- With "File transfer", you can send individual files as well as entire folders. Please right-click on the folder you wish to receive, and select "Receive folder".



Subsequent operations should be performed in the same manner as when receiving individual files.

If the file has been received successfully, the message below will appear. Please click on the [OK] button.



The message below will appear if the file transmission was unsuccessful. Please click on the [OK] button to close the message, and repeat the procedure.



 Note

- The received file will be saved in the "Shared folder" under "File transfer" in the Bluetooth Information Exchanger

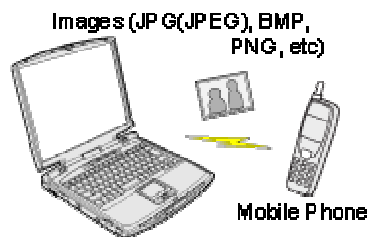


You can use [Properties](#) under the Bluetooth Information Exchanger to specify the location of the "Shared folder" on the hard drive.

## Sending images to a mobile telephone [\[BIP\]](#)

You can send image data to a Bluetooth-compatible mobile telephone. Large images will be automatically reduced to fit on the telephone display screen.

Images are sent using "Image transfer" under Bluetooth Information Exchanger.



### Note

- The mobile telephone must support the BIP profile.
- The following image file formats can be sent and received using "Image transfer":
  - Bitmap (\*.bmp)
  - JPEG (\*.jpg, \*.jpeg)
  - PNG (\*.png)

[Sending images to a mobile telephone \(using icons\)](#)

[Sending images to a mobile telephone \(by right-clicking the mouse\)](#)

### Procedure

#### **Sending images to a mobile telephone (using icons)**

**1. Turn on the PC or PDA**

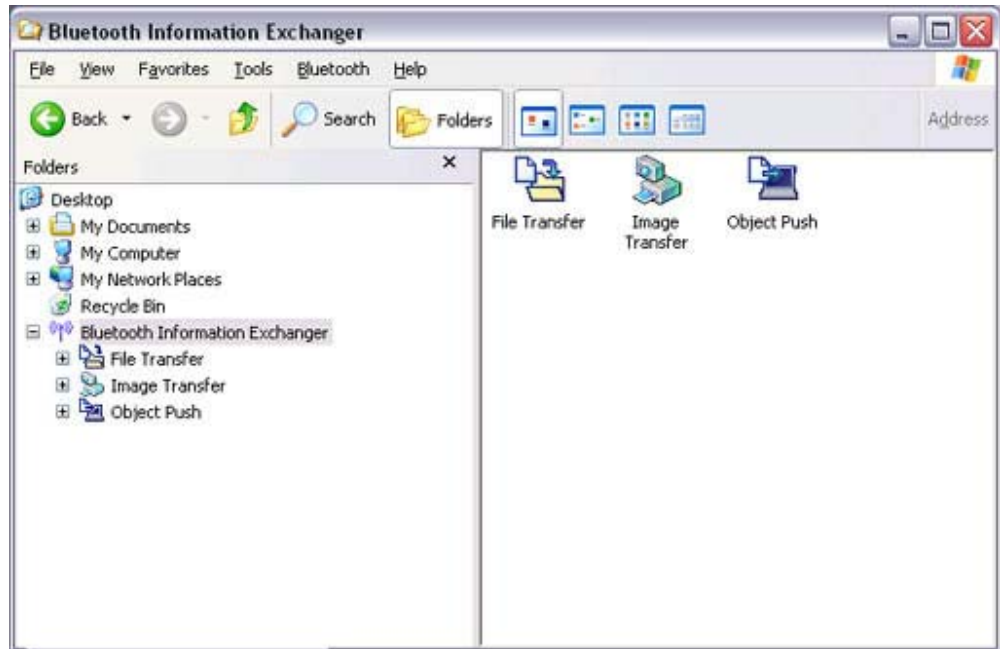
Confirm that a Bluetooth connection has been enabled before proceeding.

**2. Double-click on the Bluetooth Information Exchanger icon on the Desktop**



### Note

- Alternatively, opening Explorer and clicking on the Bluetooth Information Exchanger folder will produce the same result.



The [Bluetooth Information Exchanger] window will appear.

3. **Double-click on the [Image transfer] icon**

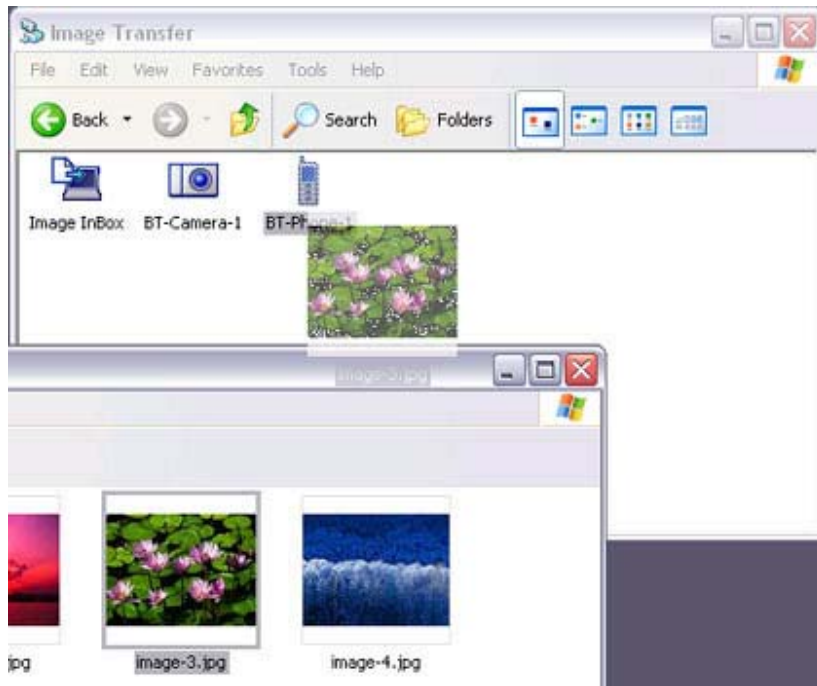
A list of devices will appear in the [Image transfer] window.



 Note



- If the desired device does not appear in the list, please confirm that the device has been turned on, and then select [Bluetooth] □ [Search Devices]. A device search will be performed.
4. **Drag and drop the file you wish to send over the destination icon**  
In this case, the image will be sent to a mobile telephone named "BT-Phone-1".



The image will be sent.

If the image has been sent successfully, the message below will appear.  
Please click on the [OK] button.



The message below will appear if the image transmission was unsuccessful.  
Please click on the [OK] button to close the message, and repeat the procedure.

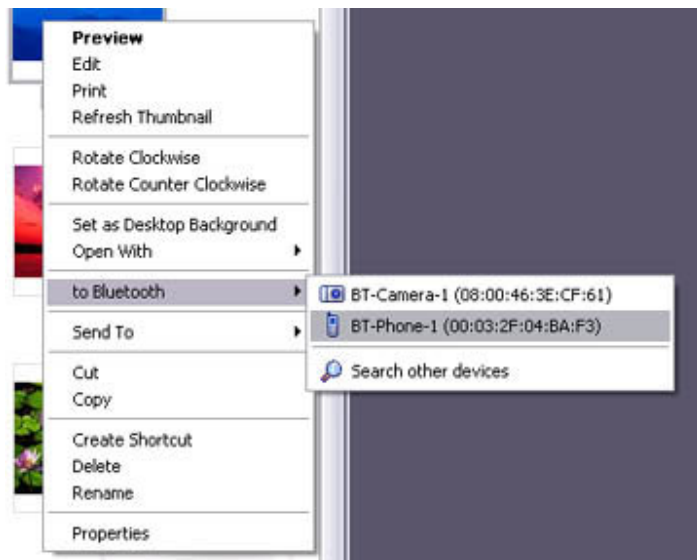


## Sending images to a mobile telephone (by right-clicking the mouse)

### 1. Turn on the mobile telephone

Confirm that a Bluetooth connection has been enabled before proceeding.

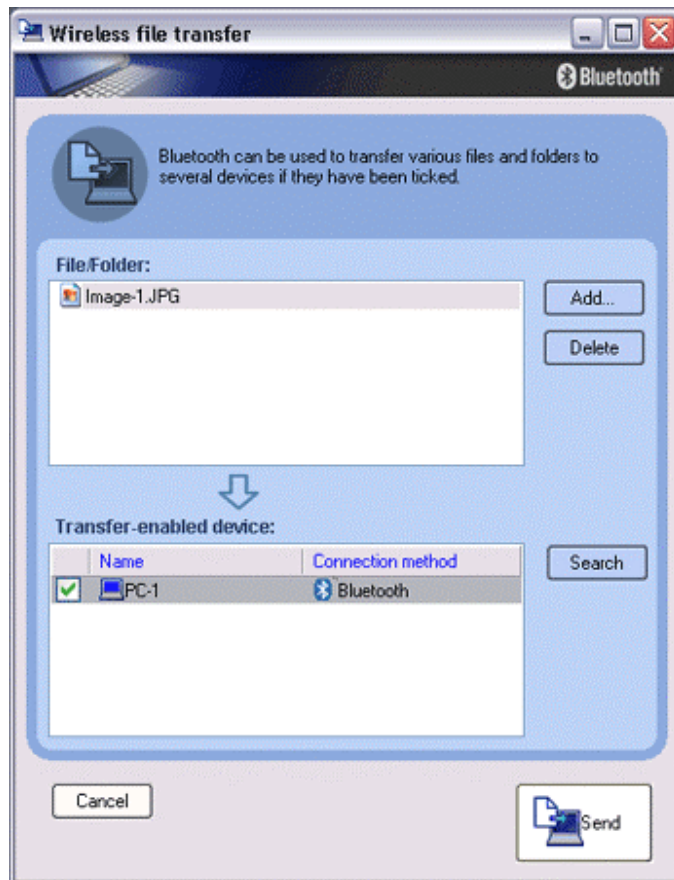
### 2. Right-click on the file you wish to send, and then click on its destination from [to Bluetooth]



### Note

- If the desired device does not appear in the list, please confirm that the device has been turned on, and then select [to Bluetooth] □ [Search other devices].

Once the devices have been detected, the message below will appear.  
Please select the destination device, and then click on the [Send] button.



The image will be sent.  
If the image has been sent successfully, the message below will appear.  
Please click on the [OK] button.



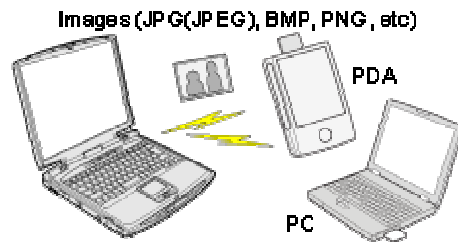
The message below will appear if the image transmission was unsuccessful.  
Please click on the [OK] button to close the message, and repeat the procedure.



## Sending images to a PC or PDA [\[BIP\]](#)

You can send image data to a Bluetooth-enabled PC or PDA.

Images are sent using "Image transfer" under Bluetooth Information Exchanger.



### Note

- The following image file formats can be sent and received using "Image transfer":
  - Bitmap (\*.bmp)
  - JPEG (\*.jpg, \*.jpeg)
  - PNG (\*.png)

[Sending images to a PC or PDA \(using icons\)](#)

[Sending images to a PC or PDA \(by right-clicking the mouse\)](#)

### Procedure

#### **Sending images to a PC or PDA (using icons)**

##### **1. Turn on the PC or PDA**

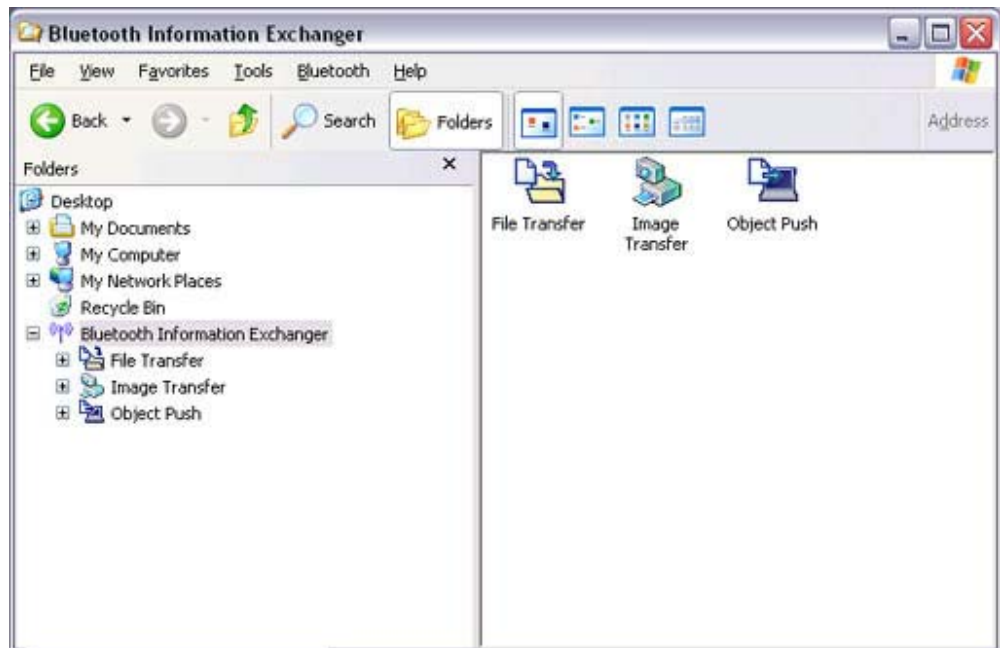
Confirm that a Bluetooth connection has been enabled before proceeding.

##### **2. Double-click on the Bluetooth Information Exchanger icon on the Desktop**



### Note

- Alternatively, opening Explorer and clicking on the Bluetooth Information Exchanger folder will produce the same result.



The [Bluetooth Information Exchanger] window will appear.

3. **Double-click on the [Image transfer] icon**

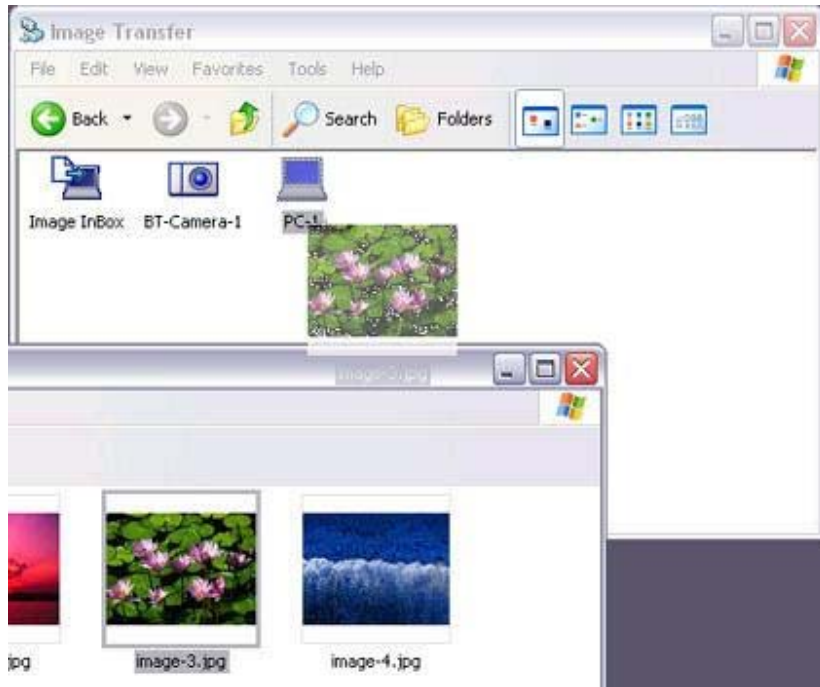
A list of devices will appear in the [Image transfer] window.



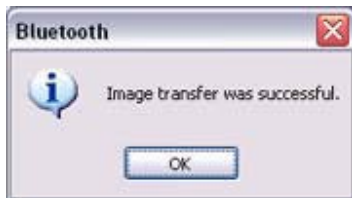
 Note

- If the desired device does not appear in the list, please confirm that the device has been turned on, and then select [Bluetooth]  [Search Devices]. A device search will be performed.

4. **Drag and drop the file you wish to send over the destination icon**  
In this case, the image will be sent to a PC named "PC-1".



The image will be sent.  
If the image has been sent successfully, the message below will appear.  
Please click on the [OK] button.

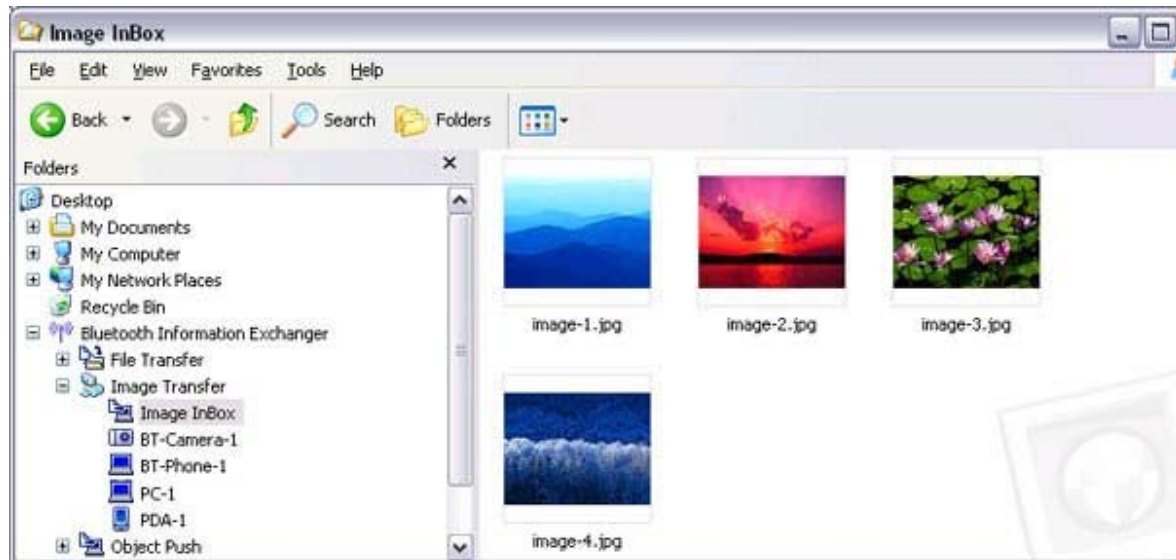


The message below will appear if the image transmission was unsuccessful.  
Please click on the [OK] button to close the message, and repeat the procedure.



 Note

- Images that have been sent will be saved in an image transfer folder on the destination device.
- Images received using "Image transfer" in the Bluetooth Information Exchanger will be saved in the "Image Box" in "Image transfer".



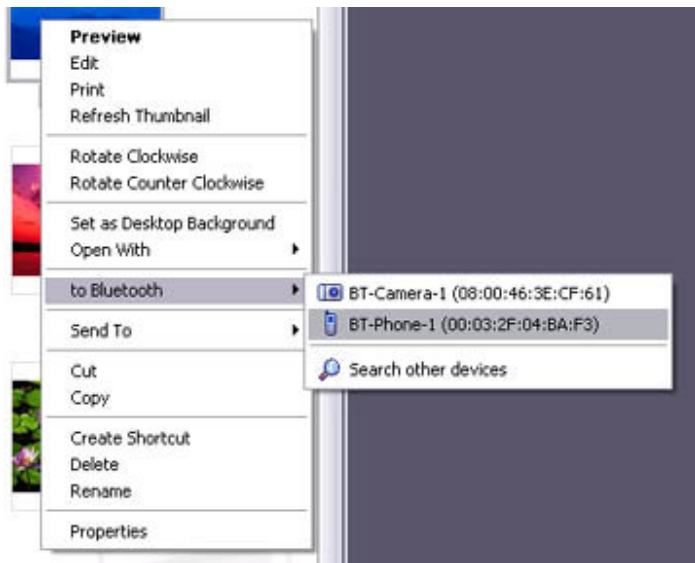
- You can use [Properties](#) under the Bluetooth Information Exchanger to change the location of the "Image Box" folder on the hard drive.

### **Sending images to a PC or PDA (by right-clicking the mouse)**

**1. Turn on the PC or PDA**

Confirm that a Bluetooth connection has been enabled before proceeding

**2. Right-click on the file you wish to send, and then click on its destination from [to Bluetooth]**

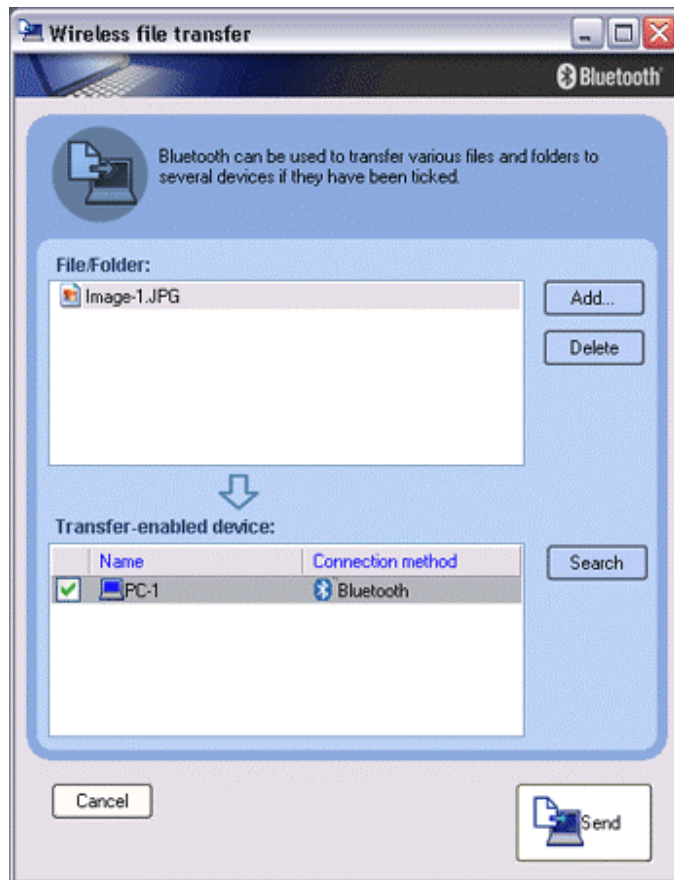


#### Note

- If the desired device does not appear in the list, please confirm that the device has been turned on, and then select [to Bluetooth] □ [Search other devices].

Once the devices have been detected, the message below will appear.  
Please select the destination device, and then click on the [Send] button.





The image will be sent.  
If the image has been sent successfully, the message below will appear.  
Please click on the [OK] button.



The message below will appear if the image transmission was unsuccessful.  
Please click on the [OK] button to close the message, and repeat the procedure.

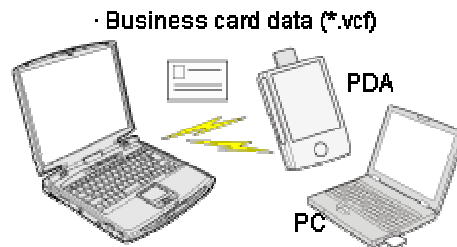


 Note

- When you send images by right-clicking the mouse, the image data that has been sent will be saved in the image transfer shared folder on the destination device. This is also the case when you send images using icons.

## Exchanging business card data with a PC or PDA [\[OPP\]](#)

You can exchange business card data with a Bluetooth-enabled PC or PDA. Business card data are exchanged using "Object Push" under Bluetooth Information Exchanger.



### Note

- Data compliant with the "vCARD" standard are the only type of business card data able to be sent and received with "Object Push". Business card data can be used by applications such as Microsoft Outlook.
- Business card data can be created in vCARD format by Microsoft Outlook and other similar applications.
  - "[Creating business card data in the vCARD format](#)"
- You can send business card data directly from Microsoft Outlook.
  - "[Sending business card data from Outlook](#)"
- The OPP profile must be supported by the PC or PDA of the other party.

- [Selecting a business card and sending it to a PC or PDA \(using icons\)](#)
- [Selecting a business card and sending it to a PC or PDA \(by right-clicking the mouse\)](#)
- [Sending your personal business card](#)
- [Receiving a business card from another party](#)
- [Exchanging business cards](#)

### Procedure

#### **Selecting a business card and sending it to a PC or PDA (using icons)**

Select a business card you wish to send from among all the business card data you have already received through exchanges with your business or other contacts, and then send it to another party.

#### **1. Turn on the PC or PDA**

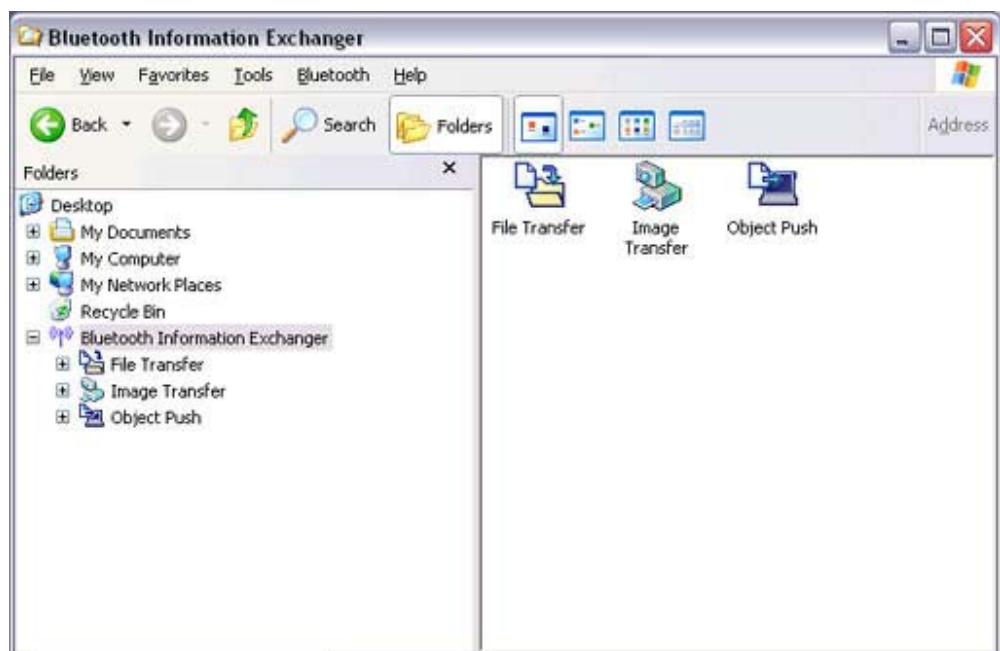
Confirm that a Bluetooth connection has been enabled before proceeding.

2. **Double-click on the Bluetooth Information Exchanger icon on the Desktop**



 Note

- Alternatively, opening Explorer and clicking on the Bluetooth Information Exchanger folder will produce the same result.



The [Bluetooth Information Exchanger] window will appear.

3. **Double-click on the [Object Push] icon**

A list of devices will appear in the [Object Push] window.



 Note

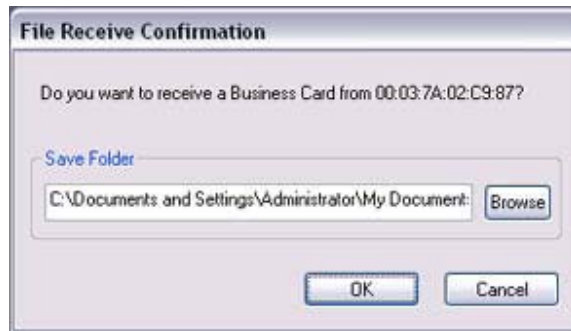
- If the desired device does not appear in the list, please confirm that the device has been turned on, and then select [Bluetooth]  [Search Devices]. A device search will be performed.
4. **Use the mouse to drag and drop the business card you wish to send over the destination icon**  
In this case, the business card will be sent to a PC named "PC-1".



The business card will be sent.

 Note

- When you try to send a business card, a message requesting permission to receive the card may appear on the device belonging to the other party (i.e., on the receiving end). The content of the message will vary with the Bluetooth software installed on the destination device, so please be sure to follow the instructions provided. If you are using the Bluetooth Utility, a message similar to the one below will appear.



If the business card has been sent successfully, the message below will appear. Please click on the [OK] button.

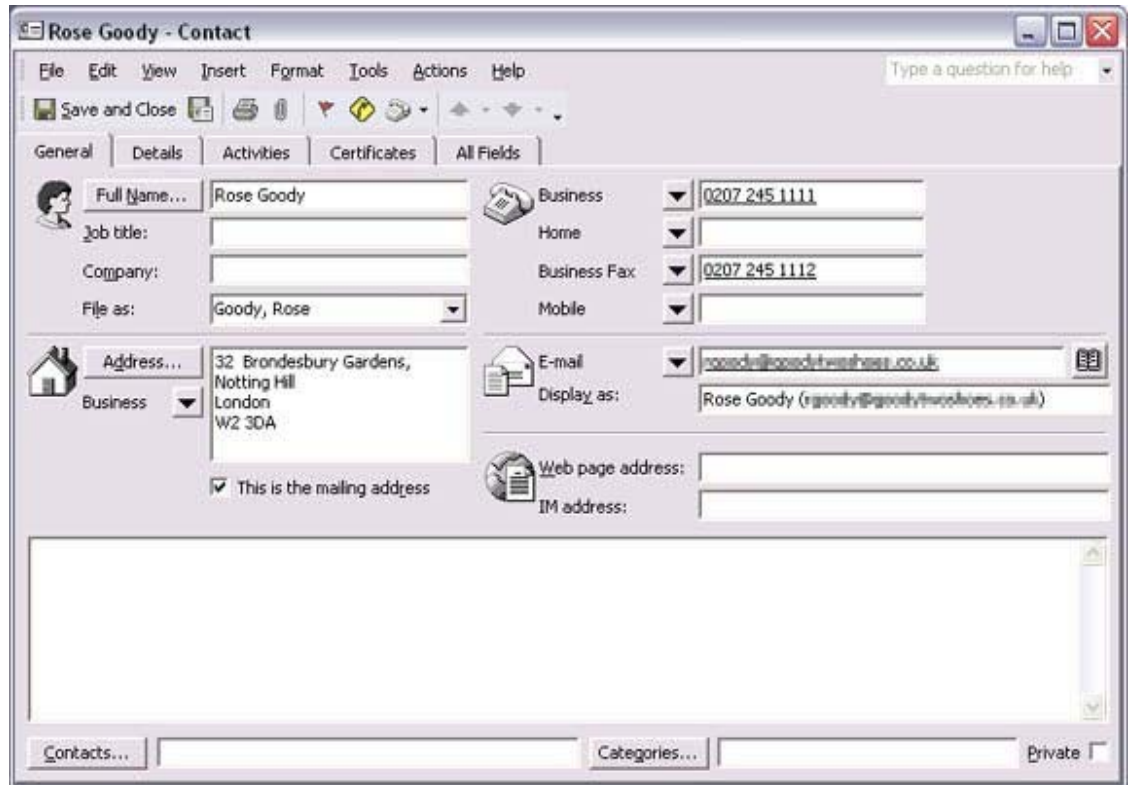


The message below will appear if the business card transmission was unsuccessful. Please click on the [OK] button to close the message, and repeat the procedure.



#### Memo

- Data that have been sent will be saved in a folder for exchanged business cards on the destination device.
- You can configure an associated application (Microsoft Outlook etc) to start automatically when you have received a business card, allowing you to view the card details.



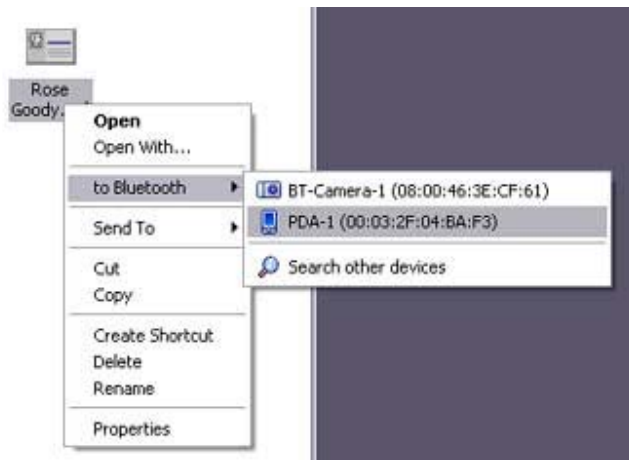
You can use [Properties](#) under Bluetooth Information Exchanger to configure whether or not you would like such an application to start automatically.

**Selecting a business card and sending it to a PC or PDA (by right-clicking the mouse)**

**1. Turn on the PC or PDA**

Confirm that a Bluetooth connection has been enabled before proceeding.

**2. Right-click on the business card you wish to send, and then click on its destination from [to Bluetooth]**



 Note

- If the desired device does not appear in the list, please confirm that the device has been turned on, and then select [to Bluetooth] □ [Search other devices].

Once the devices have been detected, the message below will appear. Please select the destination device, and then click on the [Send] button.

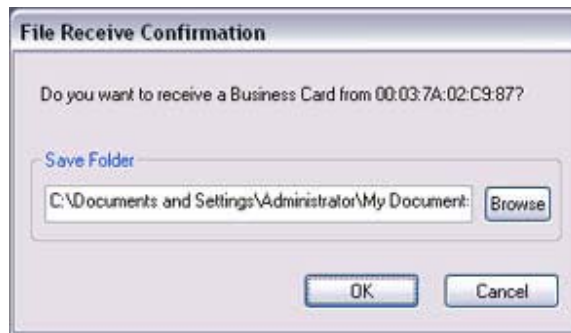


The business card will be sent.

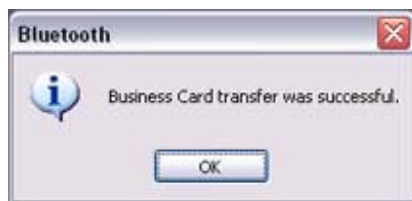
 Note



- When you try to send a business card, a message requesting permission to receive the files may appear on the device belonging to the other party (i.e., on the receiving end). The content of the message will vary with the Bluetooth software installed on the destination device, so please be sure to follow the instructions provided.  
If you are using the Bluetooth Utility, a message similar to the one below will appear.



If the business card has been sent successfully, the message below will appear. Please click on the [OK] button.



The message below will appear if the business card transmission was unsuccessful. Please click on the [OK] button to close the message, and repeat the procedure.



 Note

- Data that have been sent will be saved in a folder for exchanged business cards on the destination device.

### **Sending your personal business card**

You can prepare a business card bearing your name and other details such as your company and telephone numbers, and then send it to another party.

 Note

- Please use [Properties](#) under Bluetooth Information Exchanger beforehand to configure which data to use for your own business card.
- You can only have one business card registered as your own that is able to be sent.

**1. Turn on the PC or PDA**

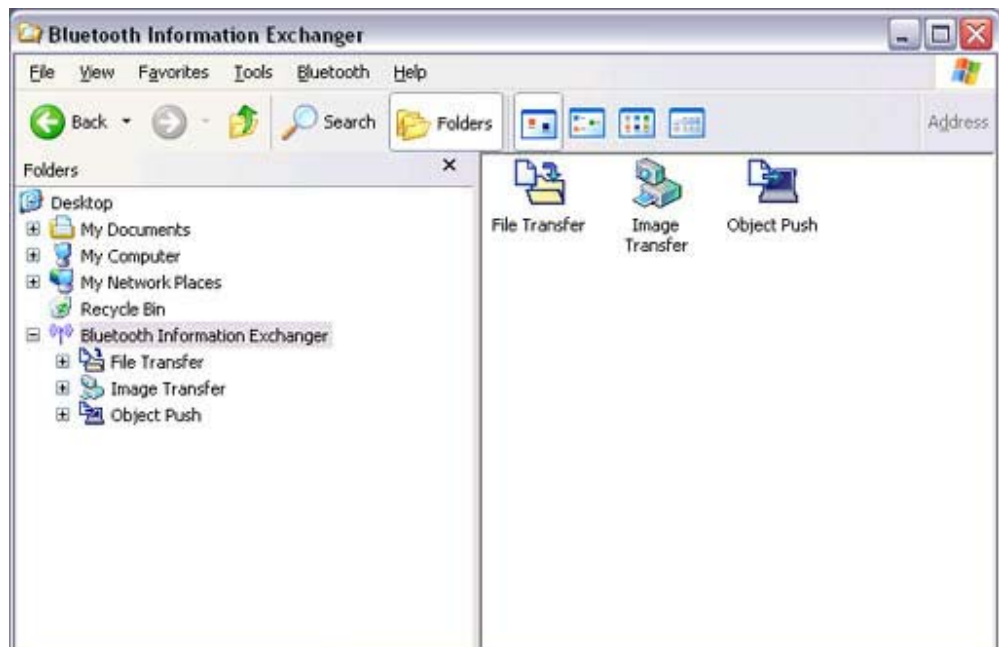
Confirm that a Bluetooth connection has been enabled before proceeding

**2. Double-click on the Bluetooth Information Exchanger icon on the Desktop**



 Note

- Alternatively, opening Explorer and clicking on the Bluetooth Information Exchanger folder will produce the same result.



The [Bluetooth Information Exchanger] window will appear.

3. **Double-click on the [Object Push] icon**

A list of devices will appear in the [Object Push] window.

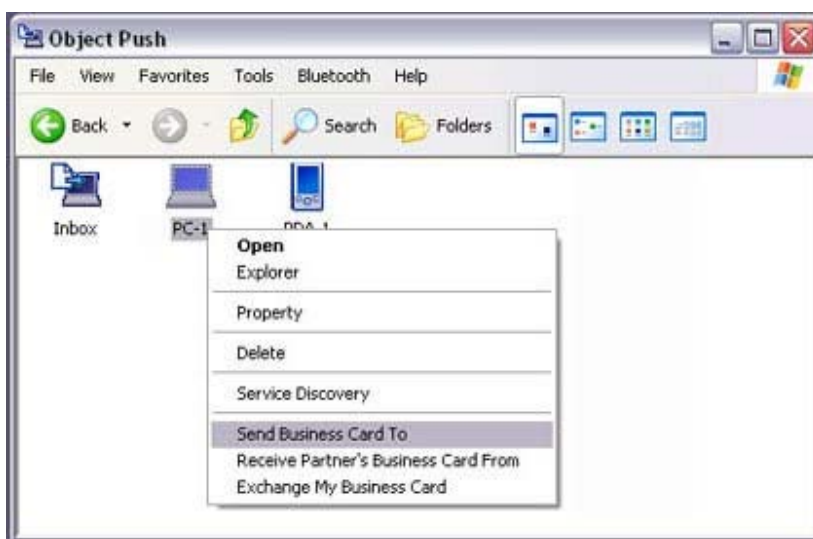


 Note

- If the desired device does not appear in the list, please confirm that the device has been turned on, and then select [Bluetooth]  [Search Devices]. A device search will be performed.

4. **Right-click on the destination icon, and then click on [Send business card To]**

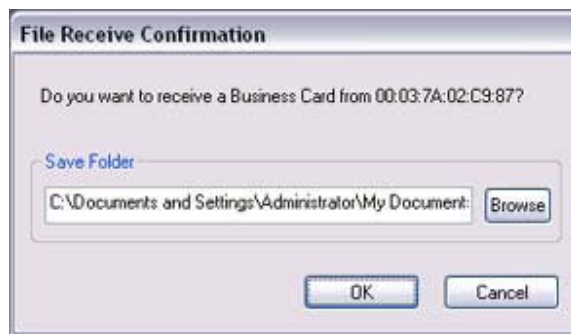
In this case, your personal business card will be sent to a PC named "PC-1".



The business card will be sent.

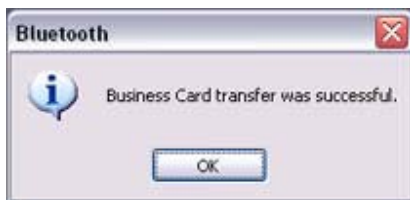
 Note

- When you try to send a business card, a message requesting permission to receive the files may appear on the device belonging to the other party (i.e., on the receiving end). The content of the message will vary with the Bluetooth software installed on the destination device, so please be sure to follow the instructions provided. If you are using the Bluetooth Utility, a message similar to the one below will appear.



- Business cards that have been sent will be saved in the Inbox of the destination party.

If your business card has been sent successfully, the message below will appear. Please click on the [OK] button.



The message below will appear if the business card transmission was unsuccessful. Please click on the [OK] button to close the message, and repeat the procedure.



 Note

- Data that has been sent will be saved in a folder for exchanged business cards on the destination device.

### Acquiring a business card from another party

You can use your PC to acquire a business card from a party containing their details.

#### 1. Turn on the PC or PDA

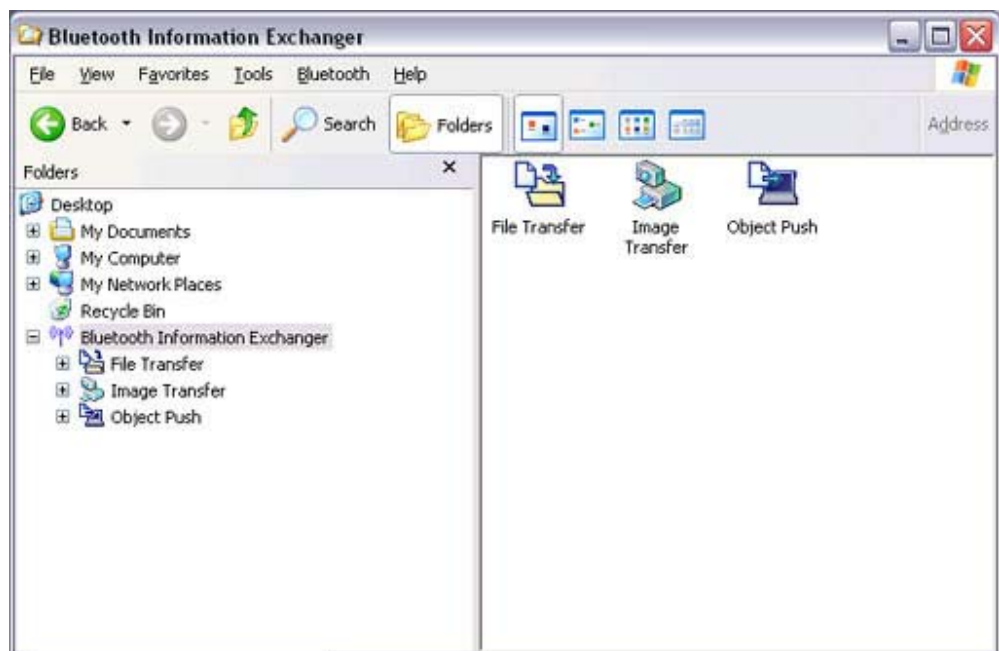
Confirm that a Bluetooth connection has been enabled before proceeding

#### 2. Double-click on the Bluetooth Information Exchanger icon on the Desktop



#### Note

- Alternatively, opening Explorer and clicking on the Bluetooth Information Exchanger folder will produce the same result.



The [Bluetooth Information Exchanger] window will appear.

#### 3. Double-click on the [Object Push] icon

A list of devices will appear in the [Object Push] window.

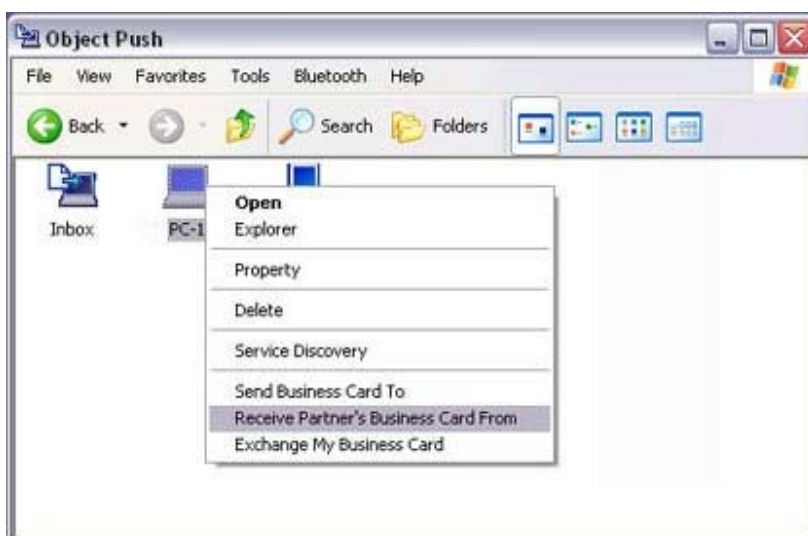


 Note

- If the desired device does not appear in the list, please confirm that the device has been turned on, and then select [Bluetooth]  [Search Devices]. A device search will be performed.

4. **Right-click on the icon of the party whose card you wish to acquire, and then click on [Receive business card]**

In this case, the business card of the other party will be acquired from a PC named "PC-1".



The business card will be received.

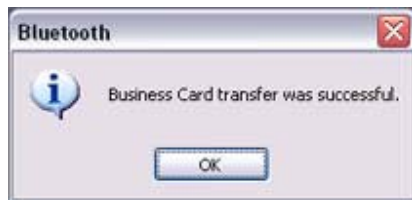
 Note

- When you try to acquire a business card, a message requesting permission to send the files may appear on the device belonging to the other party (i.e., on the sending end). The content of the message will vary with the Bluetooth software installed on the destination device, so please be sure to follow the instructions provided.  
If you are using the Bluetooth Utility, a message similar to the one below will appear.



If the business card has been received successfully, the message below will appear.

Please click on the [OK] button.



The message below will appear if the business card was unsuccessfully received.  
Please click on the [OK] button to close the message, and repeat the procedure.



 Note

- Business card data that have been received will be saved in the Inbox under "Object Push".  
You can use [Properties](#) under the Bluetooth Information Exchanger to set the location of the Inbox on the hard drive.

## Exchanging business cards

Simultaneously exchange your business card with one belonging to another party.

### 1. Turn on the PC or PDA

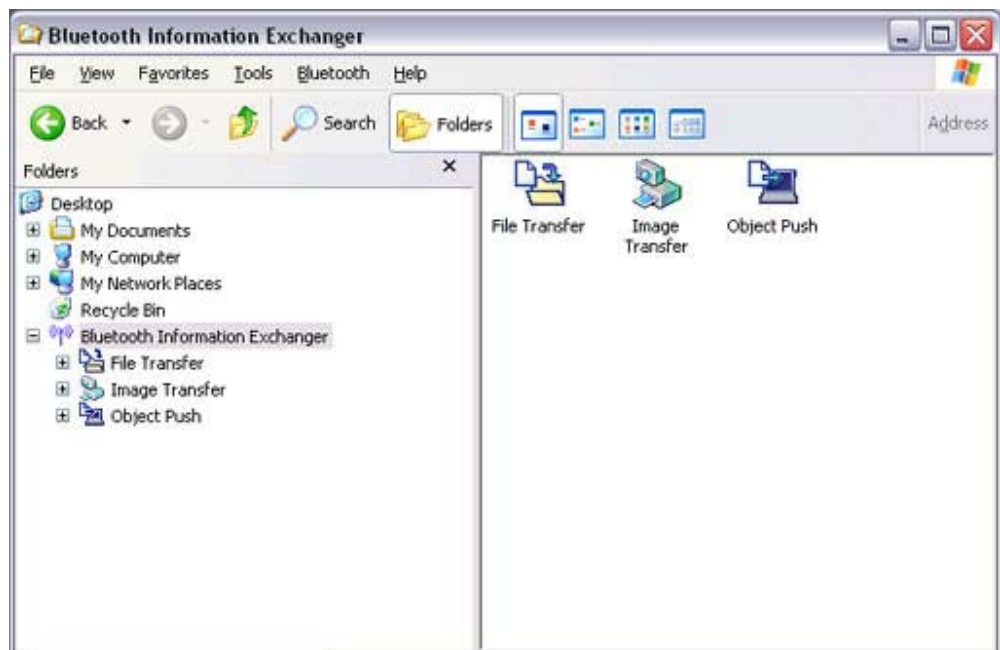
Confirm that a Bluetooth connection has been enabled before proceeding.

### 2. Double-click on the Bluetooth Information Exchanger icon on the Desktop



 Note

- Alternatively, opening Explorer and clicking on the Bluetooth Information Exchanger folder will produce the same result.



The [Bluetooth Information Exchanger] window will appear.

### 3. Double-click on the [Object Push] icon

A list of devices will appear in the [Object Push] window.





 Note

- If the desired device does not appear in the list, please confirm that the device has been turned on, and then select [Bluetooth]  [Search Devices]. A device search will be performed.

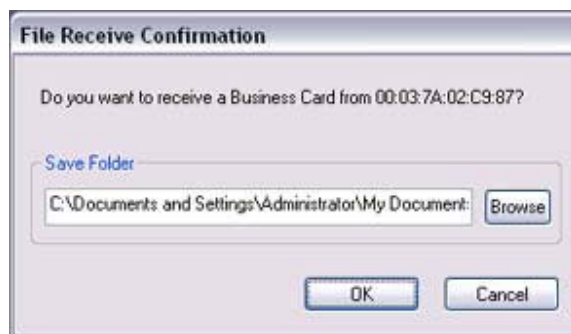
4. **Right-click on the icon of the party with whom you wish to exchange business cards, and then click on [Object Push]**  
In this case, the business cards will be exchanged with a PC named "PC-1".



The business card from the party who executed the "Exchange business cards" command will be sent first.

 Note

- When you try to send a business card, a message requesting permission to receive the files may appear on the device belonging to the other party (i.e., on the receiving end). The content of the message will vary with the Bluetooth software installed on the destination device, so please be sure to follow the instructions provided.  
If you are using the Bluetooth Utility, a message similar to the one below will appear.



A message of confirmation will appear if the card has been successfully sent.

 Note

- Business cards that have been sent will be saved in the Inbox of the destination party.

Once your business card has finished being sent, the program will start receiving the business card belonging to the other party.

 Note

- When a business card is to be received, a message such as the one below may appear on the device belonging to the other party.  
Please click on the [Yes] button if you give permission for the business card to be sent.



A message of confirmation will appear if the card has been successfully received.

 Note

- Business cards that have been received will be saved in the "Inbox" under "Object Push".  
You can use [Properties](#) under the Bluetooth Information Exchanger to set the location of the Inbox on the hard drive.

## Creating business card data in the vCARD format

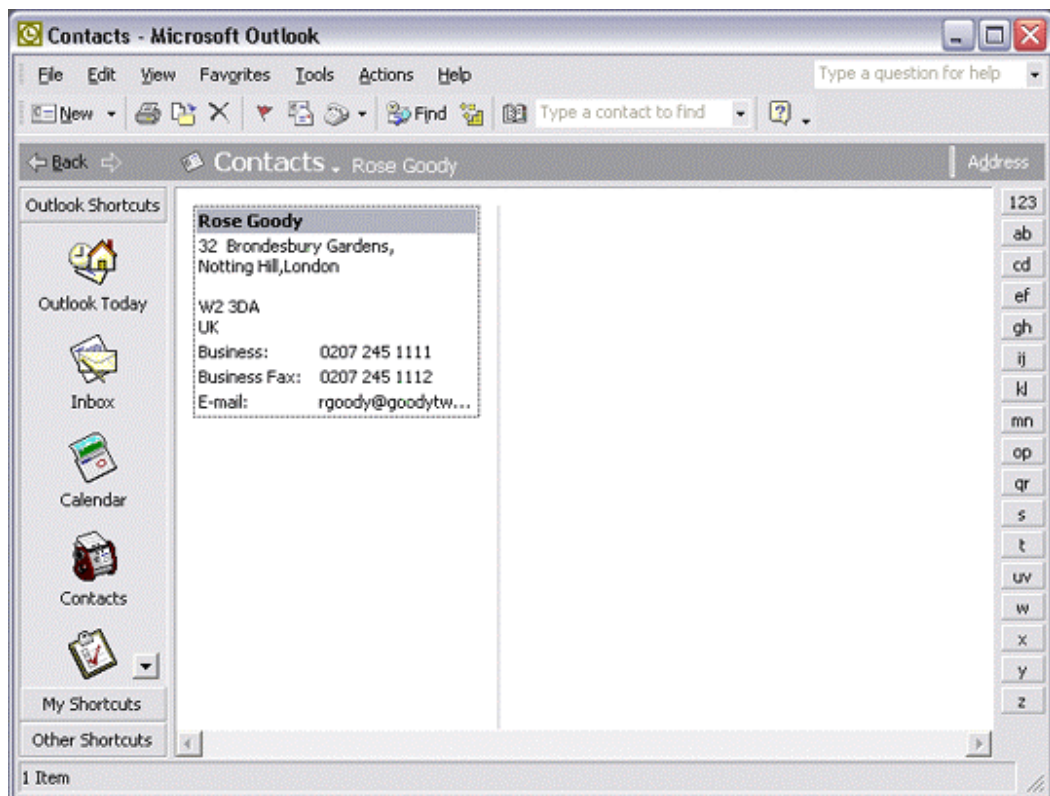
This section describes how to create business card data in the vCARD format using Microsoft Outlook 2002.

### Important

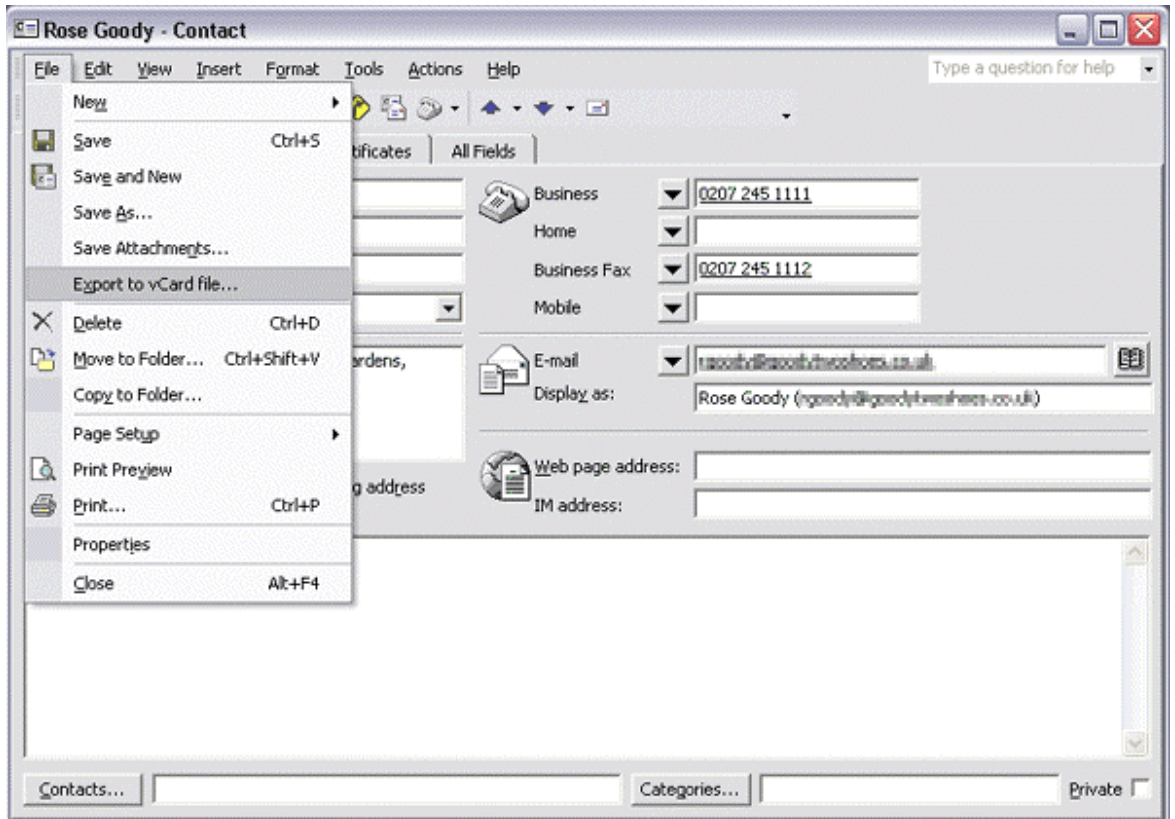
- The method for creating business card data will differ according to the type and version of application used. Please refer to the application user guide for details.

### Procedure

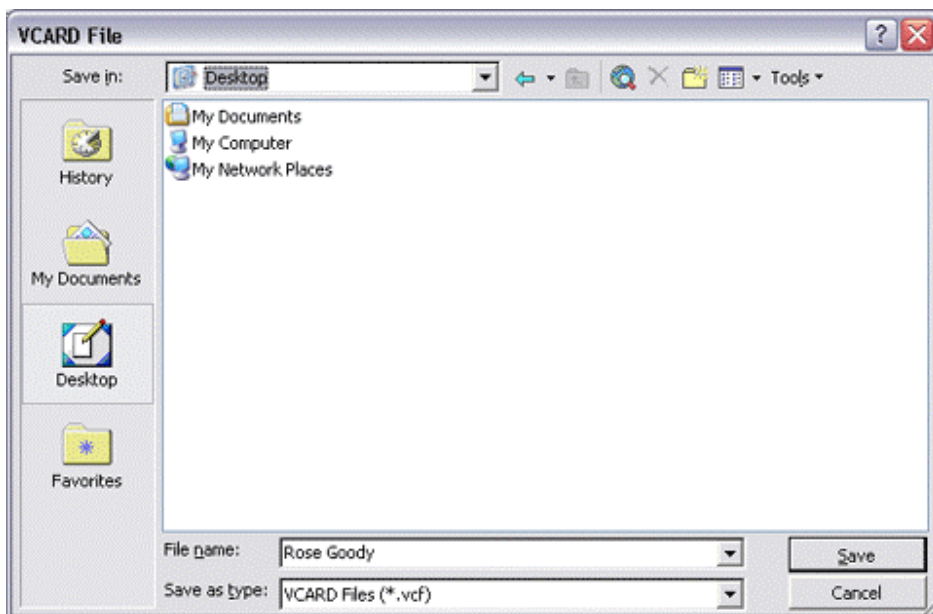
1. **Start Outlook, and then click on the [Contacts] icon.**  
The list of your contacts will appear.



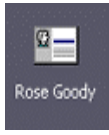
2. **Double-click to open the contact for whom you wish to create a business card, and then click on [File] [Export to vCard file...]**



3. In the [vCard file] dialog box, specify the file name and save destination, and then click on the [Save] button.



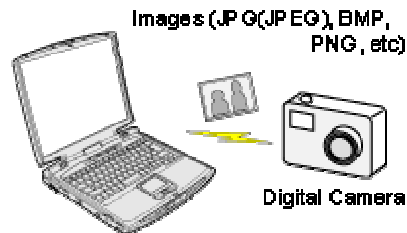
A vCARD file will have been created in the specified location.



Rose Goody

## Using a Bluetooth-compatible camera [\[BIP\]](#)

By connecting a Bluetooth-compatible digital camera to your PC via Bluetooth, you will be able to operate the camera shutter from the PC and transmit the captured images to it as well.



- [Connecting the camera](#)
- [Taking pictures](#)
- [Viewing images saved on your PC](#)

### Connecting the camera

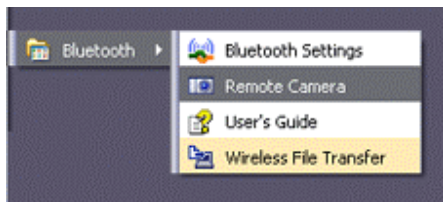
Use the "Remote Camera" tool in the Bluetooth Utility to connect the camera to your PC.

#### Procedure

1. Click on [Start] [All Programs] [Bluetooth] [Remote Camera]

#### Note

- In Windows 2000, click on [Start] [Programs] [Bluetooth] [Remote Camera].



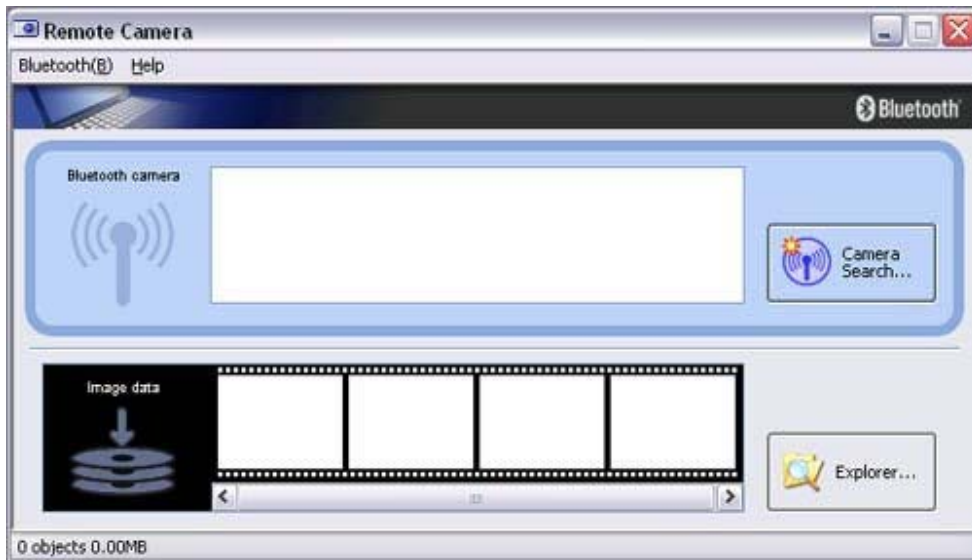
The [Remote Camera] window will appear.

2. Turn on the camera, and set it to be connectable via Bluetooth

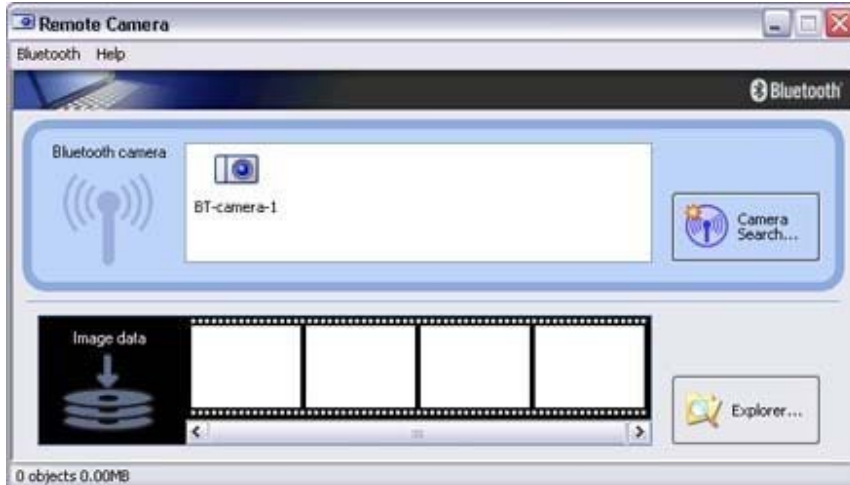
#### Note

- Different cameras are operated in different ways, depending on the manufacturer and model used. Please refer to the instruction manual for further details on how to operate your camera.

**3. Click on the [Camera Search...] button**

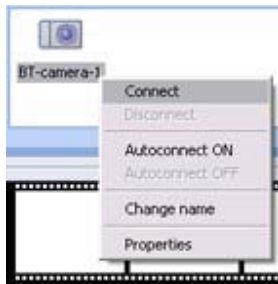


The camera will be detected and its icon displayed.





4. **Right-click on the camera icon, and select [Connect]**



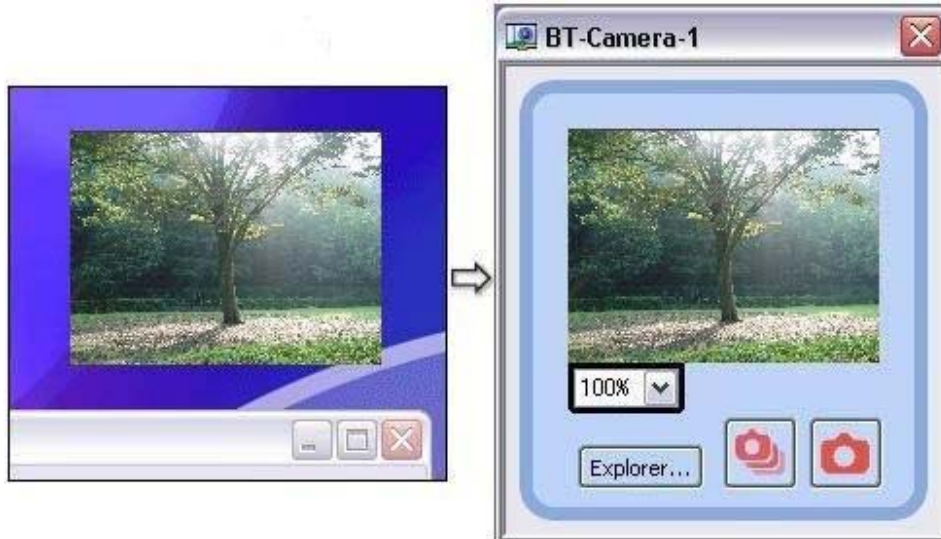
The camera will be connected, and images from the camera will appear on-screen.



**● Taking pictures**

By placing the mouse cursor over the on-screen image, the camera's operating window will appear.

You can operate the camera from this window.



**Procedure**

**□ Taking a single picture**



1. Click on the **button in the operating window.**  
A single image will be captured and sent to the PC.



#### □ Taking several consecutive frames



1. Click on the **button in the operating window**  
A succession of images will be captured and sent to the PC.



#### Note

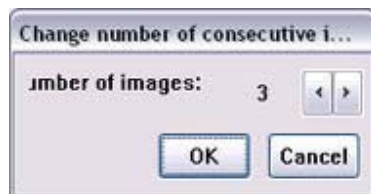
- The remote camera shutter cannot be operated while the camera is connected to the PC.
- The number of consecutive pictures taken can be set to anywhere between 2 and 16

1. In the [Remote Camera] window, click on [Bluetooth] □ [Properties] □ [Consecutive Image Settings]



The [Change number of consecutive images] dialog box will appear

2. Click on the [<|>] buttons to select the number of consecutive images to be captured



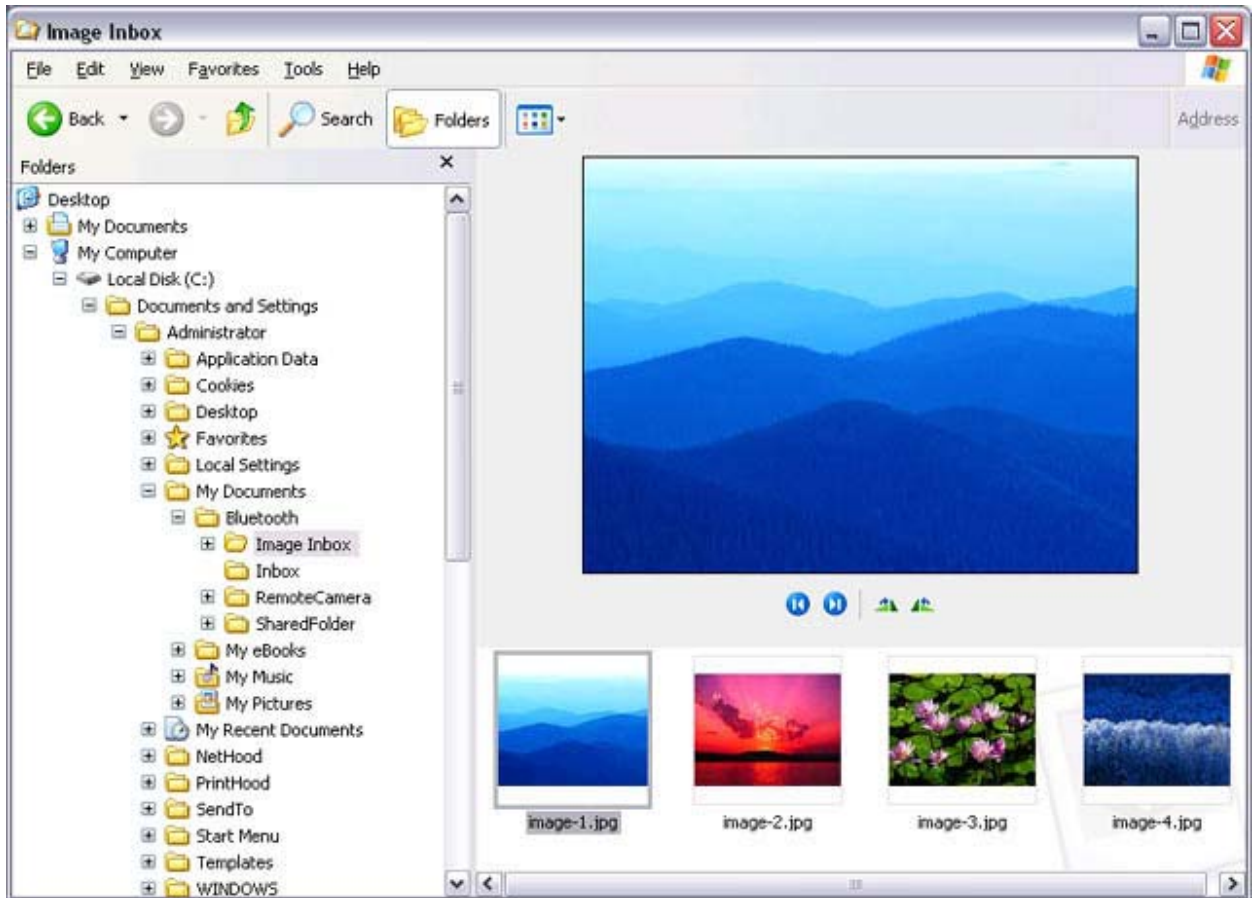
### ★ Important

- Images are not only sent to the PC, but are stored in the camera's on-board memory as well.  
Please be aware of the remaining memory capacity when you are taking a large number of pictures.
- Large file sizes are common for high-resolution images, and may take some time to be transferred to the PC.

### 🔴 Viewing images saves on your PC

A "Remote Camera" folder will be created in the "Bluetooth" folder under "My Documents" during initial set-up. A folder bearing the same name as the camera will be created in it, and images will be saved in this folder.

Click the [Explorer] button in the [Remote Camera] window to display the folder where the images have been saved.

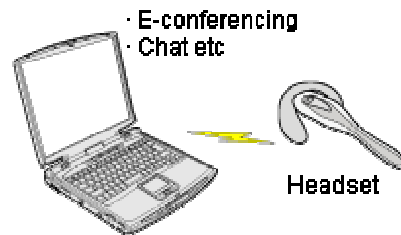


 Note

- This window is an example showing pictures when [Filmstrip] has been selected from the [View] menu in Explorer.

## Using a headset to communicate [\[HSP\]](#)

This section provides a description of how to use a Bluetooth-compatible wireless headset to communicate (chat) using Microsoft NetMeeting or other software.

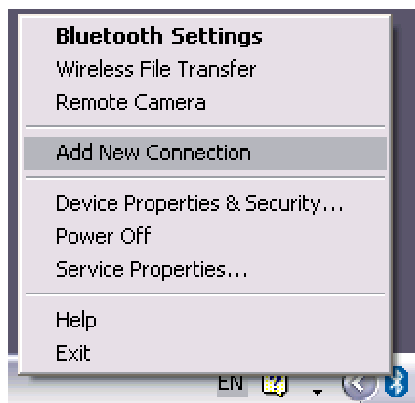


- [Registering the headset](#)
- [Making a connection to the headset](#)
- [Disconnecting from the headset](#)

### Registering the headset

#### Procedure

1. **Right-click on the Bluetooth icon in the tasktray, then click on [Add New Connection Wizard]**



#### Note

- Alternatively, you can click on [Start]>[All Programs]>[Bluetooth]>[Bluetooth Settings], then click on [New Connection] in the [Bluetooth Settings] screen that has opened.

The [Add New Connection Wizard (Welcome to the Add New Connection Wizard)] screen will appear.

## 2. Turn the headset power on

Once you have turned on the headset, set the mode to enable a Bluetooth connection.

### Important

- The procedure for operating the headset may differ depending on the manufacturer and model.  
Please consult your user guide for a detailed description of how to operate the unit.

## 3. Confirm that [Express Mode] has been selected, then click on the [Next] button



The [Add New Connection Wizard (Searching for Bluetooth Devices)] screen will appear.