

Bluetooth USB Adapter

Quick Start Guide

Version 4.0

© All rights reserved.

All trade names are registered trademarks of respective manufacturers listed.

The Bluetooth name and the Bluetooth trademarks are owned by Bluetooth SIG, Inc.

This manual may not be copied in any media or form without the written consent of original
maker.

TABLE OF CONTENTS

WELCOME3

Features3

System Requirements3

Before You Start3

Install Driver in Windows 74

WELCOME

Thank you for your purchase of the Bluetooth USB Adapter. Featuring Bluetooth wireless technology, Bluetooth USB Adapter creates cable-free connections between your PCs and other Bluetooth devices. Bluetooth USB Adapter supports Bluetooth 4.0 standard and is compatible with all Bluetooth certified devices.

Features

Compliant with Bluetooth standard version 4.0.

Support for Microsoft Windows Vista and 7.

Easy operation and setting up.

System requirements

Processor: Intel Celeron / Pentium III, IV; AMD Duron / Athlon

Operating System: Microsoft Windows Vista or 7.

System memory: 64MB at least

Hard Drive Free Space: 250MB

Before you start

Please remove any previous version of Bluetooth software existing in your system.

The remove procedures are as follows:

Step 1: Click Start/Settings, then select Control Panel.

Step 2: In the Control Panel window, double click Add/Remove

programs icon. Step 3: Find out the WIDCOMM or other Bluetooth Software then remove it.

Install Driver in Windows 7

The following steps tell you how to install the WIDCOMM Bluetooth driver in Windows 7. Other Windows OS is similar procedures as Windows 7 installation below.

Step 1:

Put WIDCOMM Driver CD into CD drive of your PC, an auto-installation program will start to guide you to complete the installation step by step.



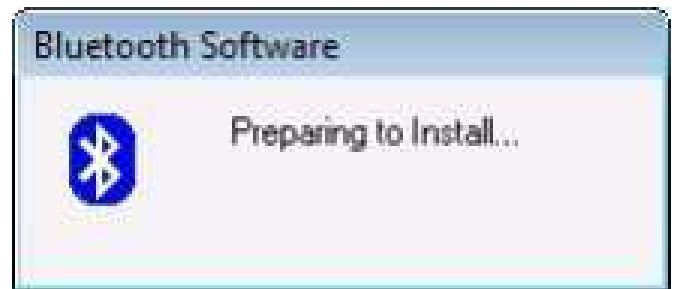
Step 2:

Please click Yes to continue installation.



Step 2:

Installation program will remind you to plug in the Bluetooth USB Adapter if you don't put it into your PC.



This dialog box will not pop up if you already have Bluetooth USB Adapter in your PC.

Step 3:

Click **Agree and Install Bluetooth Software** to continue.



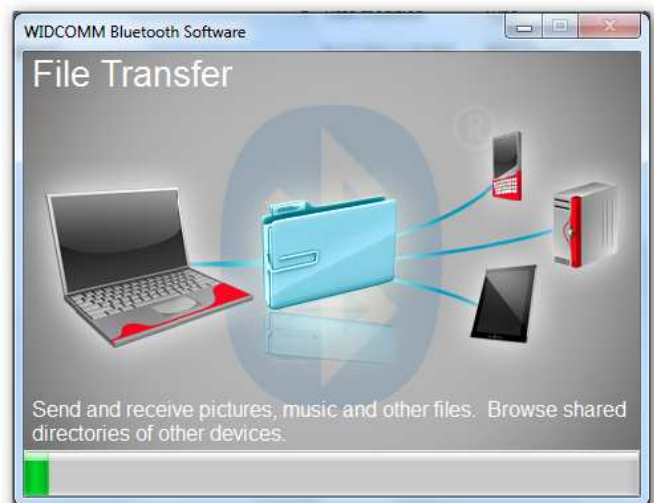
Step 4:

Please plug your Bluetooth adapter and then it will install.



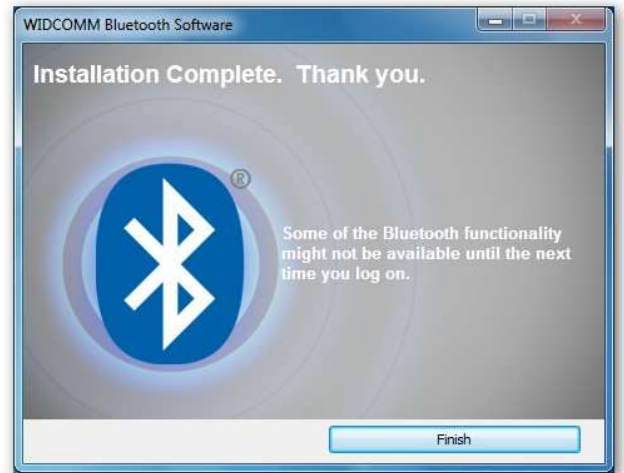
Step 5:

Welcome to install Bluetooth stack.



Step 6:

Installation Completed.



Bluetooth USB Adapter

Quick Start Guide

Version 4.1

© All rights reserved.

All trade names are registered trademarks of respective manufacturers listed.

The Bluetooth name and the Bluetooth trademarks are owned by Bluetooth SIG, Inc.

This manual may not be copied in any media or form without the written consent of original
maker.

TABLE OF CONTENTS

WELCOME3

Features3

System Requirements3

Before You Start3

Install Driver in Windows XP4

WELCOME

Thank you for your purchase of the Bluetooth USB Adapter. Featuring Bluetooth wireless technology, Bluetooth USB Adapter creates cable-free connections between your PCs and other Bluetooth devices. Bluetooth USB Adapter supports Bluetooth 4.0 standard and is compatible with all Bluetooth certified devices.

Features

Compliant with Bluetooth standard version 4.0.

Support for Microsoft Windows XP.

Easy operation and setting up.

System requirements

Processor: Intel Celeron / Pentium III, IV; AMD Duron / Athlon

Operating System: Microsoft Windows XP.

System memory: 64MB at least

Hard Drive Free Space: 250MB

Before you start

Please remove any previous version of Bluetooth software existing in your system.

The remove procedures are as follows:

Step 1: Click Start/Settings, then select Control Panel.

Step 2: In the Control Panel window, double click Add/Remove

programs icon. Step 3: Find out the WIDCOMM or other Bluetooth Software then remove it.

Install Driver in XP

The following steps tell you how to install the WIDCOMM Bluetooth driver in Windows XP. Other Windows OS is similar procedures as Windows XP installation below.

Install the driver before you remove the old driver or other Bluetooth driver.

Step 1:

Put WIDCOMM Driver CD into CD drive of your PC, an auto-installation program will start to guide you to complete the installation step by step.



Step 2:

Please click Yes to continue installation.



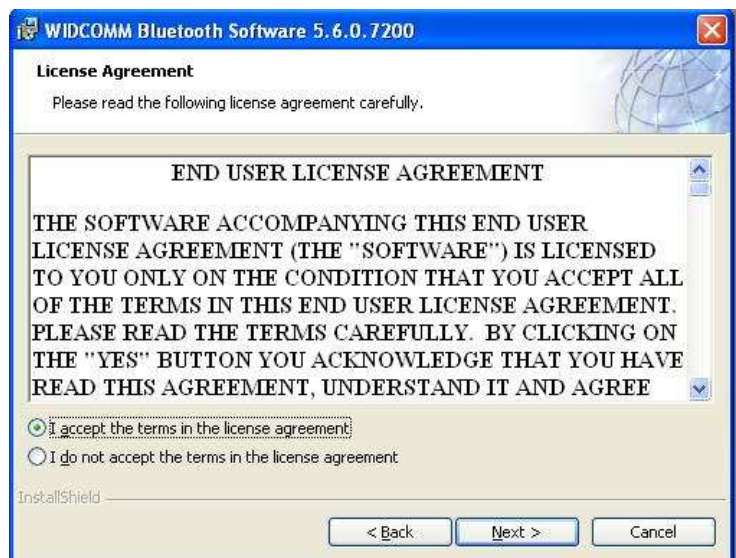
Step 2:

Please check Next.



Step 3:

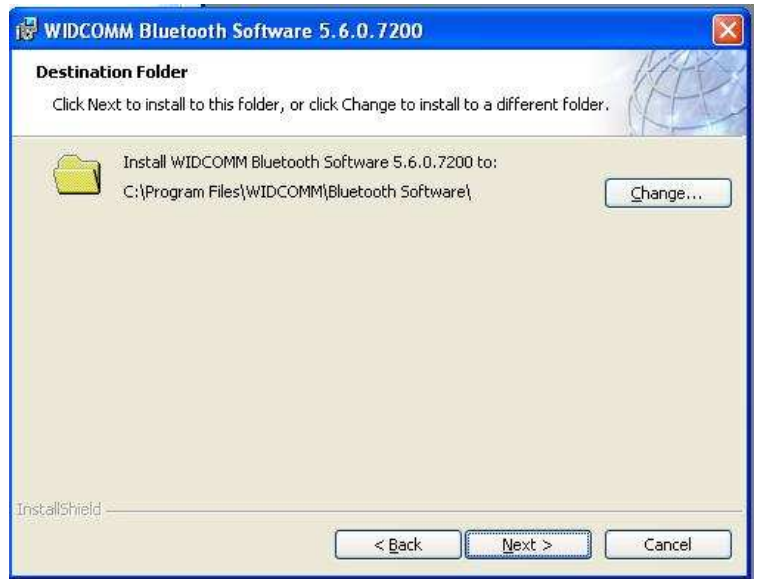
Select "I accept the terms in the license agreement"
Click Next to continue.



Step4:

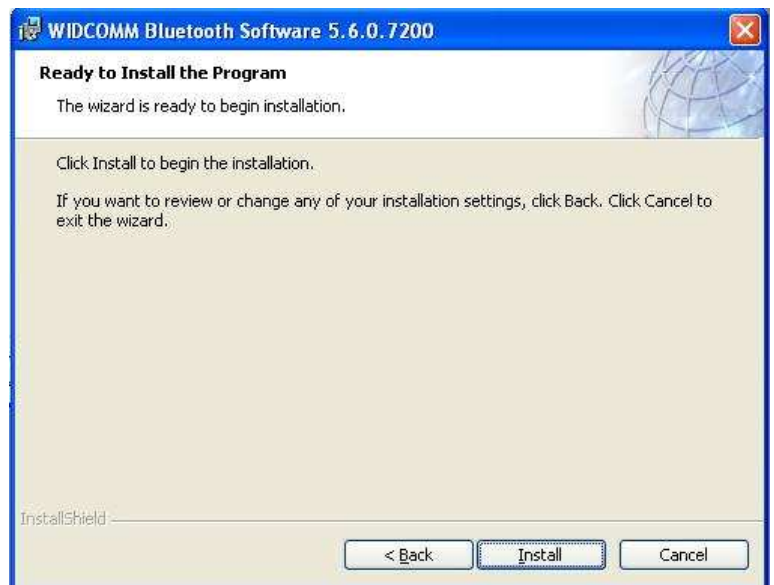
Press "Change..." button to select a new folder or leave it unchanged to use default path.

Click Next to continue.



Step5:

Click Install to start the installation.



Step6:

Wait files copy in processing.



Step7:

Plug in the Bluetooth USB Adapter and then select OK.



Step8:

Finish.



RF Exposure Warning:

This equipment complies with FCC radiation exposure limits set forth for an uncontrolled environment. This equipment should be installed and operated with minimum distance 20cm between the radiator & your body.

This transmitter must not be co-located or operating in conjunction with any other antenna or transmitter.

WARNING!

Any changes or modifications not expressly approved by the party responsible for compliance could void the user's authority to operate the equipment.