

---

**ASUS® WL-127**

Wireless Fidelity Card

## **Installation Guide**

First Edition

June 2003

---

---

No part of this documentation, including the products and software described in it, may be reproduced, transmitted, transcribed, stored in a retrieval system, or translated into any language in any form or by any means, except documentation kept by the purchaser for backup purposes, without the express written permission of ASUSTeK COMPUTER INC. ("ASUS").

ASUS PROVIDES THIS DOCUMENTATION "AS IS" WITHOUT WARRANTY OF ANY KIND, EITHER EXPRESS OR IMPLIED, INCLUDING BUT NOT LIMITED TO THE IMPLIED WARRANTIES OR CONDITIONS OF MERCHANTABILITY OR FITNESS FOR A PARTICULAR PURPOSE. IN NO EVENT SHALL ASUS, ITS DIRECTORS, OFFICERS, EMPLOYEES OR AGENTS BE LIABLE FOR ANY INDIRECT, SPECIAL, INCIDENTAL, OR CONSEQUENTIAL DAMAGES (INCLUDING DAMAGES FOR LOSS OF PROFITS, LOSS OF BUSINESS, LOSS OF USE OR DATA, INTERRUPTION OF BUSINESS AND THE LIKE), EVEN IF ASUS HAS BEEN ADVISED OF THE POSSIBILITY OF SUCH DAMAGES ARISING FROM ANY DEFECT OR ERROR IN THIS DOCUMENTATION OR PRODUCT.

Product warranty or service will not be extended if: (1) the product is repaired, modified or altered, unless such repair, modification of alteration is authorized in writing by ASUS; or (2) the serial number of the product is defaced or missing.

Products and corporate names appearing in this documentation may or may not be registered trademarks or copyrights of their respective companies, and are used only for identification or explanation and to the owners' benefit, without intent to infringe.

For documentation updates, visit the ASUS website at [www.asus.com.tw](http://www.asus.com.tw).

The specifications and information contained in this documentation are furnished for informational use only, and are subject to change at any time without notice, and should not be construed as a commitment by ASUS. ASUS assumes no responsibility or liability for any errors or inaccuracies that may appear in this documentation, including the products and the software described in it.

**Copyright © 2003 ASUSTeK COMPUTER INC. All Rights Reserved.**

## WL-127 specifications summary\*

<b>Standard</b>	IEEE 802.11b
<b>Technology</b>	Direct Sequence Spread Spectrum (DSSS)
<b>Data Transfer Rate</b>	11Mbps (with automatic fallback to 5.5, 2 and 1Mbps)
<b>Host Interface</b>	ASUS proprietary WL-127 interface
<b>Network Types</b>	Supports Infrastructure and Ad Hoc networks
<b>Frequency Band</b>	2.4 GHz ~ 2.5 GHz
<b>Security</b>	64-bit/128-bit configurable WEP encryption
<b>Access Point</b>	Software access point function supports up to 31 terminals (Windows® XP only)
<b>Operating Distance</b>	Indoors: 100 ft (30 m) @ 11Mbps Outdoors: 1000 ft (300 m) @ 11Mbps
<b>Supported OS</b>	Windows® 98SE/ME/2000/XP
<b>Antenna</b>	Stand-alone dipole antenna

*\*Specifications are subject to change without notice.*

---

## 1. Welcome!

Thank you for buying the ASUS WL-127 Card! The WL-127 card is a wireless network interface card for ASUS motherboards with the proprietary Wi-Fi slot. This card conforms to the IEEE 802.11b standard for wireless local area network (WLAN) assuring you of seamless integration to any wireless network. The WL-127 card is sure to keep you ahead in the world of wireless computing.

## 2. Package contents

Check the following items in your ASUS WL-127 package. Contact your retailer if any item is damaged or missing.

- ASUS WL-127 card
- ASUS WL-127 dipole antenna
- Installation guide
- Support CD

---

## 3. Features

The WL-127 card is an easy-to-use wireless solution for desktop PCs. Compliant with the IEEE 802.11b standard, the WL-127 card gives you freedom to connect to a wireless network and the Internet without wires and cables. Employing the Direct Sequence Spread Spectrum (DSSS) technology, the WL-127 card is capable of transmitting and receiving signals through radio waves on the 2.4 GHz band.

Check out other WL-127 card advantages.

- Reliable data transfer rates of up to 11Mbps with automatic fallback to 5.5, 2, and 1Mbps
- Secure data transmission via Wired Equivalent Privacy (WEP) encryption
- Operating distance of up to 100 ft (30 m) indoors and 1000 ft (300m) outdoors
- Easy installation and full management software support
- Software access point function supports up to 31 terminals (on Windows® XP only)
- Supports infrastructure (WL-127 to access point) and ad-hoc (WL-127 to another Wi-Fi device) network types
- Windows® 98SE/ME/2000/XP compatible

---

## 4. Card installation

**IMPORTANT!** Before installing the WL-127 card, make sure that your system meets the following requirements.

### 4.1 System requirements

- ASUS motherboard with Wi-Fi slot (P4C800/P4C800 Deluxe/P4P800/P4P800 Deluxe/P4P8X/P4S800/P4S800D/P4V800/P4V800D/P4R800-V/A7N8X-E)\*
- Intel® Pentium™ 4 system
- Minimum 64MB system memory
- Windows® 98 SE/2000/ME/XP operating system
- CD-ROM drive for software and drivers installation

**NOTE.** Visit the ASUS website for an updated list of motherboards with WiFi slot.

---

## 4.2 Hardware installation

Follow these steps to install the WL-127 card in your system.

**CAUTION!** Before handling the card, touch a bare metal portion of your PC to discharge static electricity from your body. Wear a wrist strap grounded to the PC chassis when handling the card.

**IMPORTANT!** The PCI5 and the Wi-Fi slot may not be used simultaneously on certain motherboards. Check your motherboard documentation for this limitation.

1. Make sure that the PC is turned off. Unplug the power cord from the electrical socket.
2. Remove the PC cover.
3. Locate the Wi-Fi slot. Refer to your motherboard documentation for the Wi-Fi slot location.
4. Remove the rear panel bracket opposite the Wi-Fi slot. Keep the screw for later use.
5. Carefully insert the card into the Wi-Fi slot. To prevent incorrect orientation, one pin of the WL-127 connector is removed to match the covered hole on the Wi-Fi slot.
6. Secure the card with the screw that you removed earlier.
7. Replace the PC cover and plug in the power cord.

9. Connect the dipole antenna twist-on connector to the antenna connector (male) of the WL-127 card.
8. Turn on the computer.

### 4.2.1 Indicators

The WL-127 card is equipped with a Data Transmission (Green AIR) and Network Link (Yellow LINK) LED indicators. Refer to the table below for LED indications.

<b>AIR</b>	<b>LINK</b>	<b>Meaning</b>
Fast Blink	ON	Transmitting/receiving data and connected to the network
ON	ON	No data activity but connected to the network
OFF	OFF	No power or not connected to the network

### 4.2.2 Antenna Placement

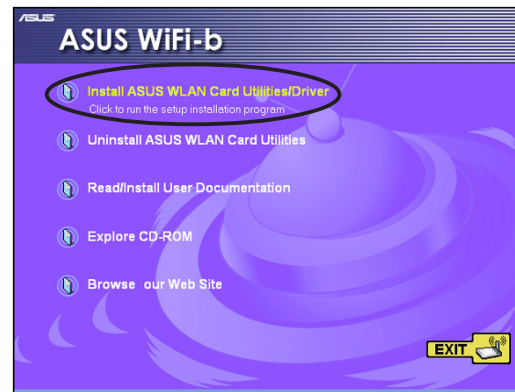
Place the dipole antenna at an elevated location to maintain quality signal. Avoid placing the antenna under your table or in a close compartment.



## 4.3 Software installation

Follow these steps to install the WL-127 card driver and the Control Center Utility.

1. Turn on your computer.
2. Insert the support CD into the CD-ROM drive.
3. Click “Install ASUS WLAN Card Utilities/Driver” when the ASUS WL-127 installation window appears.
4. Restart your computer after the device driver and the Control Center Utility are installed.



**NOTE.** If Autorun is NOT enabled in your computer, browse the contents of the support CD and double click the Setup.exe file to run the CD.

### 4.3.1 Other support CD contents

The support CD also contains the following options.

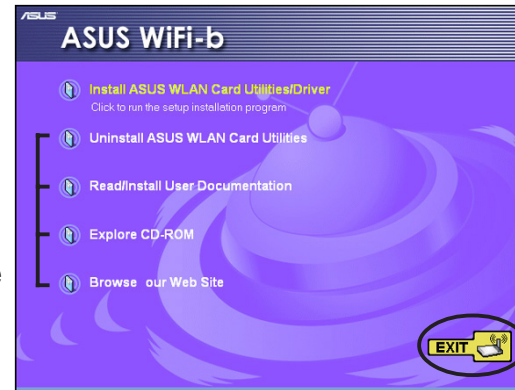
**Uninstall ASUS WLAN Card Utilities.** Click this option to uninstall the Control Center Utility from your system.

**Read/Install User Documentation.** Click to view the installation and quick setup guides in PDF format.

**Explore CD-ROM.** Click this option to explore the support CD contents.

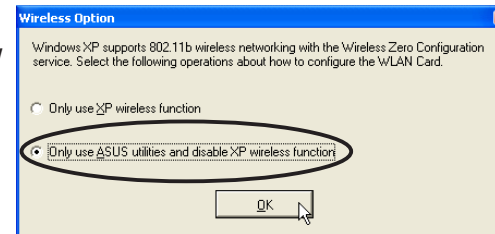
**Browse our Web Site.** Click this option to visit the ASUS website.

Click **EXIT** to close the installation window.



## 4.4 Windows® XP Wireless Options

The first time that the Control Center Utility is launched in Windows® XP, it will automatically show the Wireless Options window. Select “**Only use ASUS utilities and disable XP wireless function**” to avail all WL-127 card features. Click OK.













## 5. Using the Control Center Utility

The Control Center Utility is a management software that launches applications and activate network location settings. The Control Center Utility starts automatically when the system boots and displays an icon in the Windows taskbar. The Control Center icon serves as application launcher, and indicator of signal quality and Internet connection (see next section).






The Control Center icon indicates the quality of link to the Access Point and whether or not the system is connected to the Internet. Refer to the table below for icon meanings.

#### Infrastructure Network Mode (WL-127 to an Access Point)

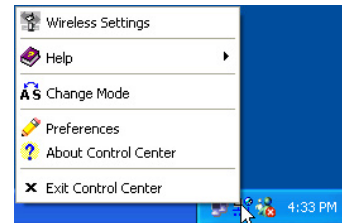
 Excellent link quality and connected to the Internet	 Excellent link quality but not connected to the Internet
 Good link quality and connected to the Internet	 Good link quality but not connected to the Internet
 Fair link quality and connected to the Internet	 Fair link quality but not connected to the Internet
 Poor link quality but connected to the Internet	 Poor link quality and not connected to the Internet
 Not linked but connected to the Internet	 Not linked and not connected to the Internet

#### Ad-Hoc Network Mode (WL-127 to other Wi-Fi device)

 Linked
 Not Linked
 Connected to the Internet

## 5.1 Control Center Right-Click Menu

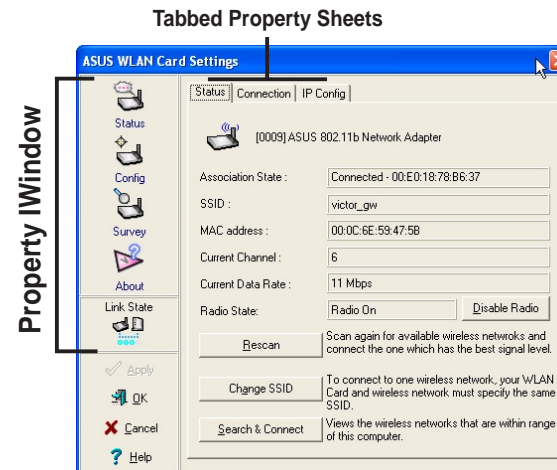
Right-clicking the Control Center icon displays the right-click menu. The following sections describe the right-click menu items.



### 5.1.1 Wireless Settings

The Wireless Settings is the main interface that allows users to control the ASUS WL-127. Use the Wireless Settings to view the operational and connection status, or to modify the WL-127 configuration.

The Wireless Settings window is composed of the property window and tabbed property sheets. Click the icons in the property window to display their tabbed property sheets.

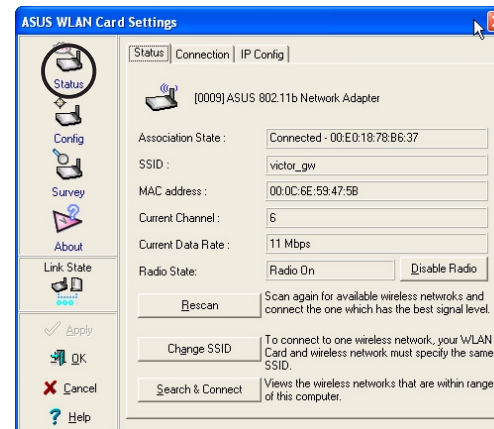


## Status - Status Tab

The Status Tab provides general information on the WL-127 card.

**Association State.** This field displays the connection status and MAC address of the network where the system is connected.

**Service Set Identifier (SSID).** This field displays the SSID of the network which the card is associated or is intending to join. The SSID is a group name shared by every member of a wireless network. Only client PCs with the same SSID are allowed to establish a connection.



The **MAC Address** field displays the hardware address of a device connected to a network.

The **Current Channel** field displays the radio channel that the card is currently tuned. The channel changes as WL-127 scans the available channels. See page 27 for channel information.

The **Current Data Rate** field displays the data transfer rate between the WL-127 card and the access point.

The **Radio State** field displays the radio communication status. Click the **Disable Radio** button if you wish to disable radio communication with the access point.

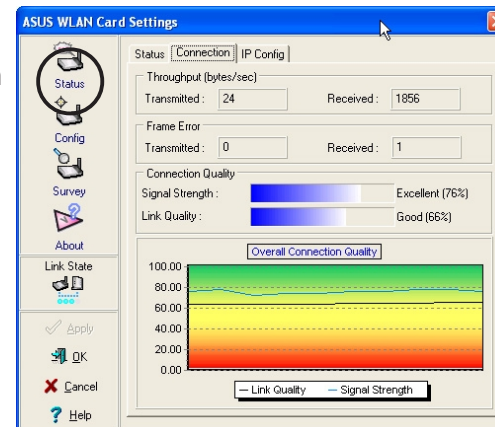
**Rescan** button - Click to allow WL-127 to scan available wireless networks and to connect to the network with the best signal quality.

**Change SSID** button - Click to change the SSID. Clicking this button opens the Config-Basic window. See page 17 for details.

**Search and Connect** button - Click to view all wireless networks within the range of your system. Clicking this button opens the Site Survey window. See page 21 for details.

### Status - Connection Tab

The Connection Tab provides real-time information on connection throughput, frame errors, signal strength, link quality and overall connection quality in graph representation.



## Status - IP Config Tab

The IP Config tab displays the current host and ethernet adapter configurations. IP Config displays TCP/IP information including the IP address, subnet mask, default gateway, DNS and Windows Internet Naming Service (WINS) configurations.

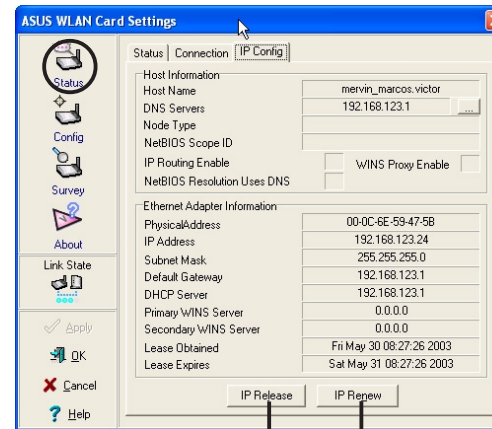
Use the IP Config Tab to verify your network settings.

### IP Buttons

**IP Release.** Click to release the DHCP IP address for the WL-127 card.

**IP Renew.** Click to renew the DHCP IP address for the WL-127 card.

**NOTE.** The Dynamic Host Configuration Protocol (DHCP) allows a computer or computers on a network to be automatically assigned a single IP address from a DHCP server.



IP Buttons



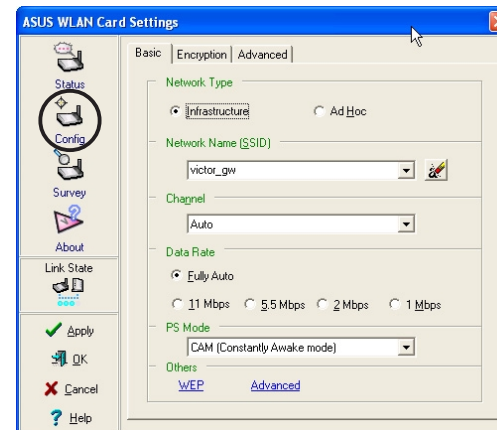
## Config - Basic Tab

The **Basic** tab provides general information on network types and other configurations.

**Network Type.** Select which type of network you wish to use. Select *Infrastructure* mode to establish a connection with an Access Point (AP). In this mode, your system can access wireless LAN and wired LAN (Ethernet) via the AP. Select the *Ad Hoc* mode to communicate directly with other Wi-Fi devices within the WL-127 operating range.

**Network Name** - Displays the network SSID. The network SSID is a string used to identify a wireless LAN. Assign different SSIDs to segment the wireless LAN and increase network security. Set the SSID to a null string to allow your station to connect to any available Access Point. Null string may not be used in *Ad Hoc* mode.

**Channel.** In *Infrastructure* mode, WL-127 automatically selects the correct frequency channel. In *Ad Hoc* mode, select a channel that is allowed for use in your country/region. See page 27 for channel information.



**Data Rate.** Select *Fully Auto* to allow WiFi-b to adjust to the most suitable connection. You may also fix data transfer rates to 11, 5.5, 2 and 1 Mbps.

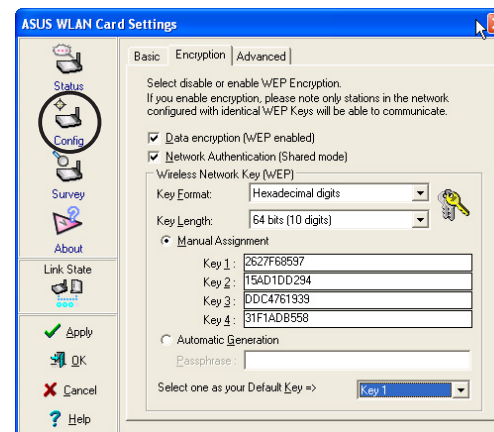
**PS Mode.** This field allows control of the WL-127 card power saving features. The *CAM (Constantly Awake mode)* is recommended for systems running on AC power.

**Others.** Click the *WEP* or *Advanced* link to open the Encryption or Advanced property tab sheet.

## Config - EncryptionTab

Wireless data transmissions between your WL-127 and the AP are secured using the Wired Equivalent Privacy (WEP) encryption. Check the *Data encryption (WEP enabled)* option to assign the WEP keys.

Check the *Network Authentication (Shared Mode)* option if you wish to use a network key to authenticate a preferred wireless network. Unchecking this option allows the network to operate on an Open System mode.



---

**Key Format** allows you to set a hexadecimal digit or ASCII character WEP key.

**Key Length** allows you to choose a 64-bit or a 128-bit WEP key. A 64-bit encryption contains 10 hexadecimal digits or 5 ASCII characters. A 128-bit encryption contains 26 hexadecimal digits or 13 ASCII characters.

**NOTE.** 64-bit and 40-bit WEP keys use the same encryption method and can interoperate on wireless networks. This lower level of WEP encryption uses a 40-bit (10 hexadecimal digits assigned by the user) secret key and a 24-bit Initialization Vector assigned by the WL-127. 104-bit and 128-bit WEPs use the same encryption method.

### **Two ways to assign WEP keys**

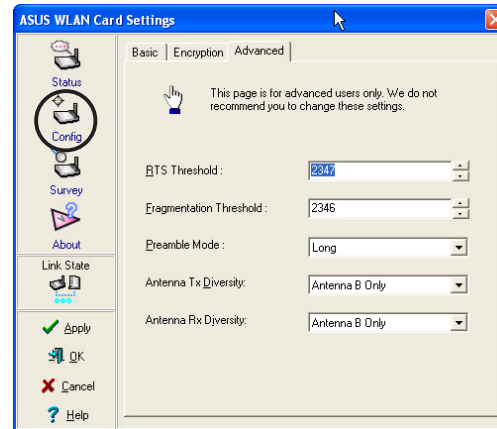
**Manual Assignment.** For a 64-bit encryption, enter 10 hexadecimal digits (0~9, a~f, A~F) in each of the four WEP keys.

**Automatic Generation.** Type a combination of up to 64 letters, numbers, or symbols in the Passphrase field. The Wireless Settings Utility uses an algorithm to generate four WEP keys based on the typed combination.

**NOTE.** After assigning the WEP keys, Click **APPLY** to save and activate the encryption. Manually assigned encryptions are more secured than automatically generated encryptions.

### Config - Advanced

The **Advanced** tab displays the WL-127 card advance settings. It is recommended that you do not make any changes on these settings.



## Site Survey

The **Site Survey** tab displays the available networks within the range of the WL-127 card. The following network attributes are displayed:

**BSSID** - The IEEE MAC address of the network

**SSID** - SSID (service set identifier) of the network.

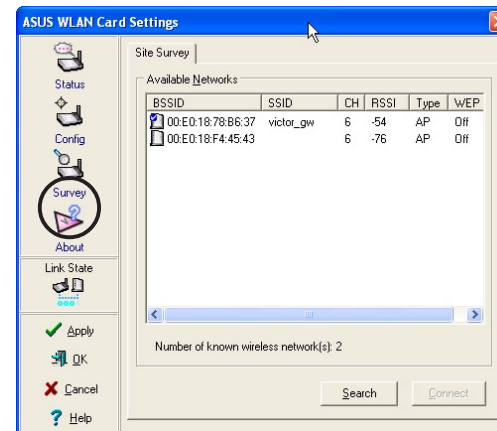
**CH** - Direct sequence channel used by the network.

**RSSI** - Received Signal Strength Indicator (RSSI) in dBm.

**Type** - wireless network mode. AP indicates an Infrastructure network type. STA indicates an Ad Hoc network type.

**WEP** - shows whether a network has an enabled (On) or disabled (Off) WEP encryption.

Select an available network and click **Connect** to establish connection. Click **Search** to rescan available networks.

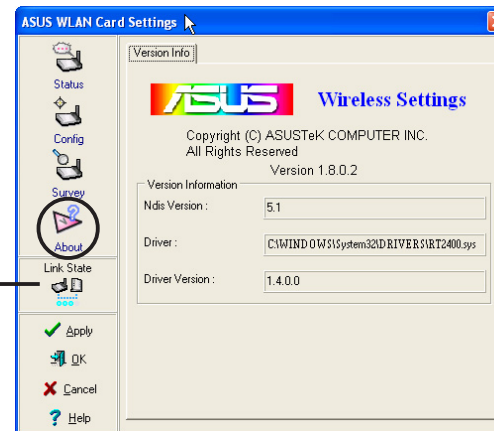


## About

Click the **About** icon to view the software version, driver version, and copyright information.

## Link State

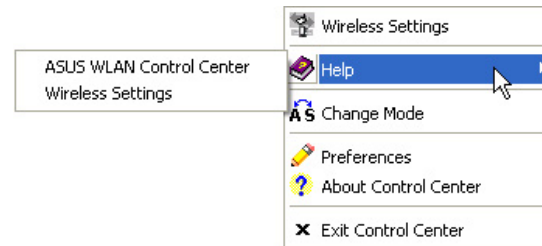
Displays the current connection status of the WL-127 card to the AP or to other Wi-Fi device.



### 5.1.2 Help Menu

The Control Center Utility is equipped with a Help menu to guide you in using and configuring the WL-127 card.

Right-click the Control Center icon on the taskbar, then select **Help**. Select the Help menu you wish to browse.



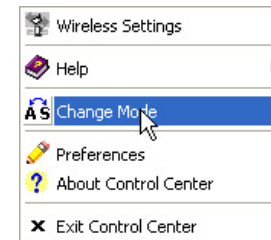
### 5.1.3 Configuring your system as an Access Point (AP)

The Control Center Utility can configure your system as soft access point (AP). The WL-127 soft AP function can support up to 31 wireless clients. Before configuring your system as soft AP, make sure your system meets the following requirements:

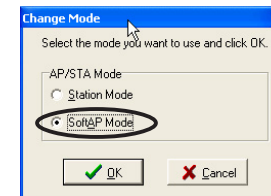
- Connection to the Internet (cable, DSL, satellite, etc) and wired LAN
- Windows® XP operating system

Follow these instructions to configure your system as soft AP.

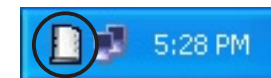
Right-click the Control Center icon on the taskbar, then select **Change Mode** in the pop-up menu. A **Change Mode** window appears.



Select **SoftAP Mode**. Click OK.



The **Access Point** icon replaces the Control Center icon in the Windows® taskbar.

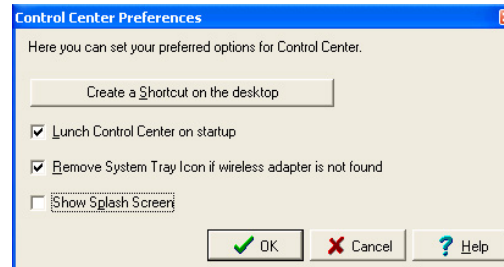


**IMPORTANT.** Make sure that the network type of wireless clients is set to **Infrastructure** mode. Wireless clients must also have the same SSID with the soft AP to establish connection.



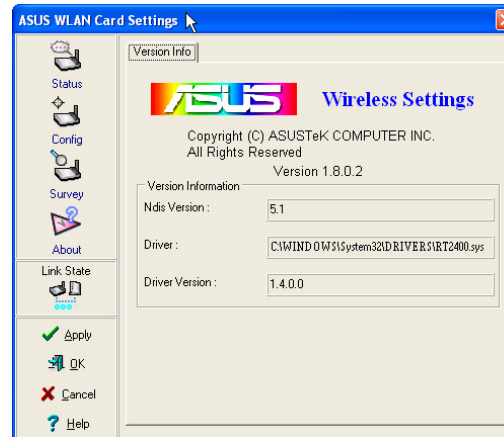
### 5.1.4 Preferences

The **Preferences** window allows you to customize the Control Center Utility settings.



### 5.1.5 About Control Center

The **About Control Center** menu displays the software, drivers, and copyright information.



## 5.2 Control Center Left-Click Menu

Left-clicking the Control Center icon displays the Left-Click menu. The options are described below.



**Wireless Radio On** – Turns the WL-127 radio ON.

**Wireless Radio Off** – Turns the WL-127 radio OFF.

**Search & Connect** – View available wireless networks within range.

**Wireless Option** (Windows® XP only) – Sets your Windows® XP wireless networking environment. See page 11 for details.

## 6. Appendix

### 6.1 Channels

The IEEE 802.11b standard for Wireless LAN allocated the 2.4 GHz frequency band into 14 overlapping operating **channels**. Each channel corresponds to a different set of frequencies. The table below shows the center frequencies of each channel.

Channel	Center Frequency	Channel	Center Frequency
1	2.412 GHz	8	2.447 GHz
2	2.417 GHz	9	2.452 GHz
3	2.422 GHz	10	2.457 GHz
4	2.427 GHz	11	2.462 GHz
5	2.432 GHz	12	2.467 GHz
6	2.437 GHz	13	2.472 GHz
7	2.442 GHz	14	2.484 GHz

**IMPORTANT!** If several WL-127 devices are operating in the same vicinity, the distance between the center frequencies of channels used must be at least 25 MHz to avoid interference.

The number of channels available for the WL-127 varies by country/region. Refer to the table below to determine the number of channels available in your location.

<b>Country/Region</b>	<b>Available Channels</b>
United States (FCC) and Canada (IC)	Channels 1 to 11
Europe (ETSI) except Spain and France	Channels 1 to 13
Spain	Channels 10 and 11
France	Channels 10 to 13
Japan (MKK)	Channels 1 to 14

**NOTE.** Channels 1,6 and 11 are independent and do not overlap each other. It is recommended to tune your WL-127 card to these channels.

---

## 6.2 Safety Information

In order to maintain compliance with the FCC RF exposure guidelines, this equipment should be installed and operated with minimum distance **[20cm]** between the radiator and your body. Use only with supplied antenna. Unauthorized antenna, modification, or attachments could damage the transmitter and may violate FCC regulations.

**CAUTION!** Any changes or modifications not expressly approved in this manual could void your authorization to use this device.

### MPE Statement

Your device contains a low power transmitter. When device is transmitted it sends out Radio Frequency (RF) signal.

### Caution Statement of the FCC Radio Frequency Exposure

This Wireless LAN radio device has been evaluated under FCC Bulletin OET 65C and found compliant to the requirements as set forth in CFR 47 Sections 2.1091, and 15.247(b)(4) addressing RF Exposure from radio frequency devices. The radiation output power of this Wireless LAN device is far below the FCC radio frequency exposure limits. Nevertheless, this device shall be used in such a manner that the potential for human contact during normal operation is minimized. Use in a portable or body-worn configuration is strictly prohibited.

---

prohibited. When using this device, a certain separation distance between antenna and nearby persons has to be kept to ensure RF exposure compliance. In order to comply with the RF exposure limits established in the ANSI C95.1 standards, the distance between the antennas and the user should not be less than **[20cm]**.



# ASUS Contact Information

## **ASUSTeK COMPUTER INC. (Asia-Pacific)**

### **Marketing**

Address: 150 Li-Te Road  
Peitou, Taipei, Taiwan 112  
General Tel.: +886-2-2894-3447  
General Fax: +886-2-2894-3449  
General Email: [info@asus.com.tw](mailto:info@asus.com.tw)

### **Technical Support**

MB/Others (Tel): +886-2-2890-7121 (English)  
Notebook (Tel): +886-2-2890-7122 (English)  
Desktop/Server (Tel): +886-2-2890-7123 (English)  
Support Fax: +886-2-2890-7698  
Web Site: [www.asus.com.tw](http://www.asus.com.tw)

## **ASUS COMPUTER INTERNATIONAL (America)**

### **Marketing**

Address: 44370 Nobel Drive, Fremont,  
CA 94538, USA  
General Fax: +1-502-933-8713  
General Email: [tmd1@asus.com](mailto:tmd1@asus.com)

### **Technical Support**

Support Fax: +1-502-933-8713  
General Support: +1-502-995-0883  
Web Site: [usa.asus.com](http://usa.asus.com)  
Support E-mail: [tsd@asus.com](mailto:tsd@asus.com)

## **ASUS COMPUTER GmbH (Germany and Austria)**

### **Marketing**

Address: Harkortstr. 25 40880 Ratingen,  
BRD, Germany  
General Fax: +49-2102-9599-31  
General Email: [sales@asuscom.de](mailto:sales@asuscom.de)  
(for marketing requests only)

### **Technical Support**

Support Hotline: Components: +49-2102-9599-0  
Notebook: +49-2102-9599-10  
Support Fax: +49-2102-9599-11  
Support (Email): [www.asuscom.de/support](http://www.asuscom.de/support)  
(for online support)  
Web Site: [www.asuscom.de](http://www.asuscom.de)