



ASUS WLAN Card

WL-138gE

(For 802.11g and 802.11b Wireless Networks)

User's Manual

System Requirements

To begin using the ASUS WLAN Card, you must have the following minimum requirements:

- Windows XP/2000/ME/98SE
- Standard 32-bit PCI Slot
- 32MB system memory or larger
- 300MHz processor or higher

The Product Package

When you receive the ASUS WLAN Card package, it should contain the following items:

- ASUS WLAN PCI Card
- ASUS WLAN Card Quick Start Guide
- CD-ROM Disc (Drivers, Utilities, Documentation)



If any of the above items are not included or damaged, contact your local dealer for instructions.

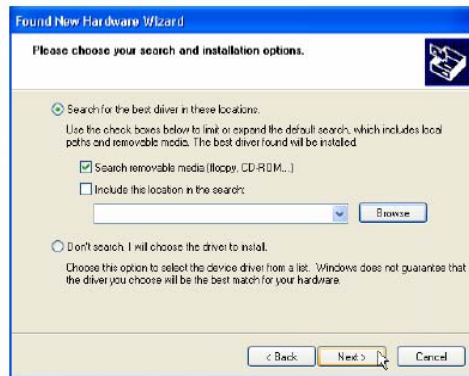
2. Installation

Installing the ASUS WLAN Card Driver

1. Have an experienced person install the ASUS WLAN Card into a free PCI slot. Replace your chassis door, panels, screws, and cables when completed.
2. Turn ON your computer and enter Windows.



3. Windows will automatically detect the ASUS WLAN Card once it is inserted into the PCI slot, then the “Add New Hardware Wizard” dialog will appear. Click **Next**.



4. Insert the support CD that came with your ASUS WLAN Card.
5. Select “Search for...” and “Search removable media...”, then click **Next**.





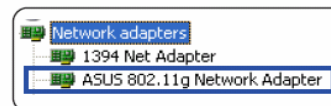
6. Wait while Windows XP creates a restore point for you system files in case you need to restore your current system.



7. Click **Finish** when installation has complete. Restart your computer if prompted.

Verifying Drivers

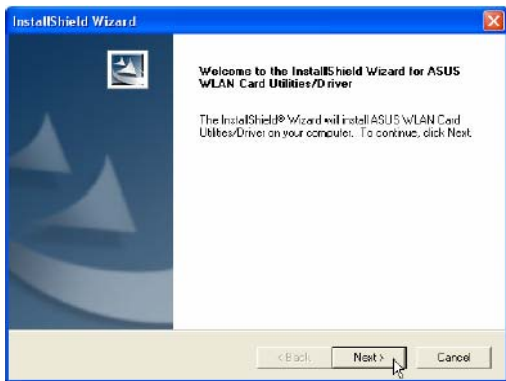
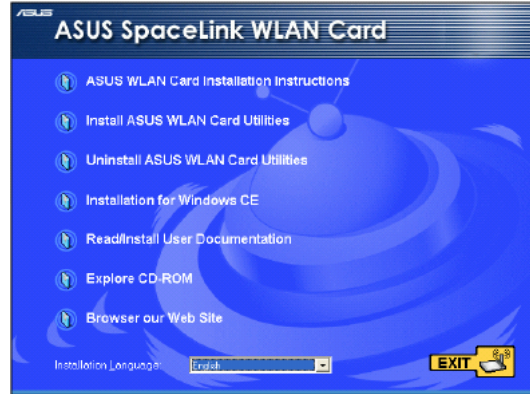
You can verify the ASUS WLAN Card driver in Device Manager. (Access Device Manager from Start | Control Panel | System | Hardware). A question mark  means that no driver has been installed. An exclamation mark over a card  means that the driver is incorrect. Verify that you are using the correct product and driver CD. Try repeating the installation and contact customer support if necessary.



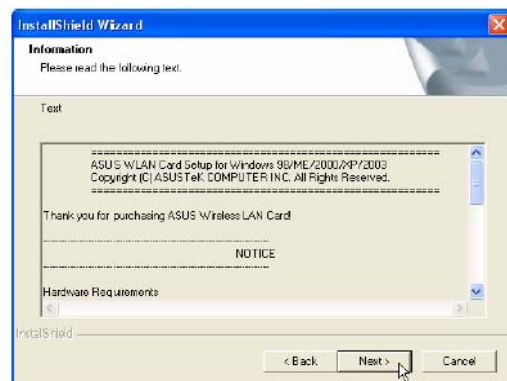
Installing the ASUS WLAN Card Utilities

After you have installed the ASUS WLAN Card driver, you can install the WLAN Adapter utilities as shown below.

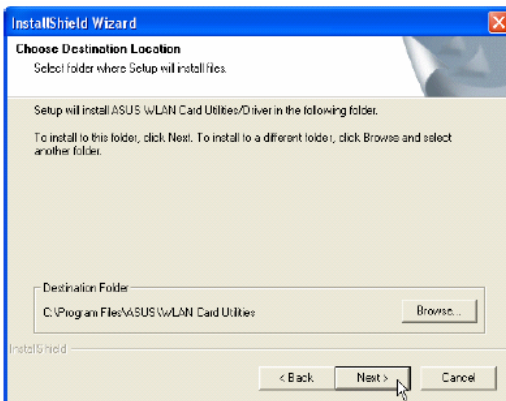
1. Insert the ASUS WLAN Card support CD and an autorun menu will appear. If your autorun is disabled, double click **SETUP.EXE** in the root directory of the support CD.
2. From the autorun menu, select your language and click Install ASUS WLAN Card Utilities.



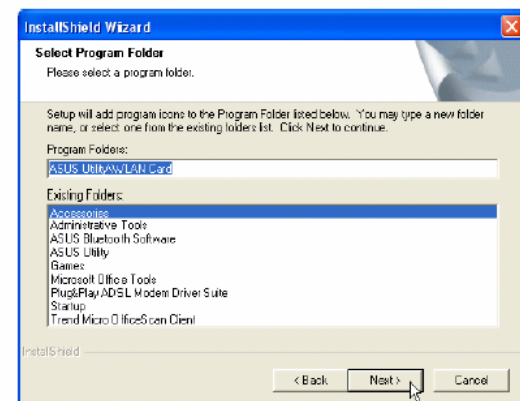
3. Click **Next** on the Welcome screen.



4. Click **Next** after reading the Information.



5. Click **Next** to use the default Destination Folder or click Browse to select another folder.

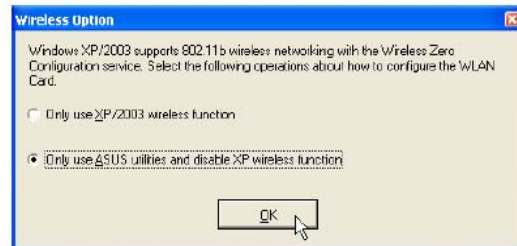


6. Click **Next** to place icons in the default program folder or type another folder name.

Installing the ASUS WLAN Card Utilities (Cont.)



7. When Setup is complete, click **Finish** to exit the installation wizard.



8. When the program is launched for the first time, you will be asked which function to use. Select to use ASUS utilities for more functions.

Reading the ASUS WLAN Status Indicators

The ASUS WLAN card consists of one LED that indicates the status of the ASUS WLAN Card.

OFF: No wireless activity.

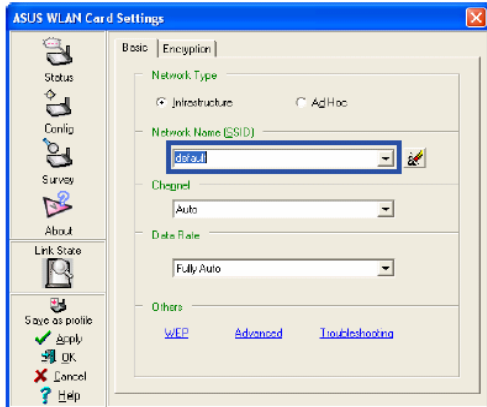
Blinking: Transmitting or receiving wireless data.

Orientating the Antenna

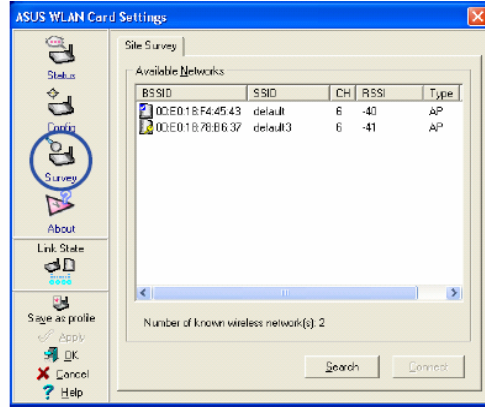
The ASUS WLAN Card has one external antenna. It is recommended that you adjust the external antenna straight up for maximum range and higher link quality.

ASUS WLAN Utility Quick Start

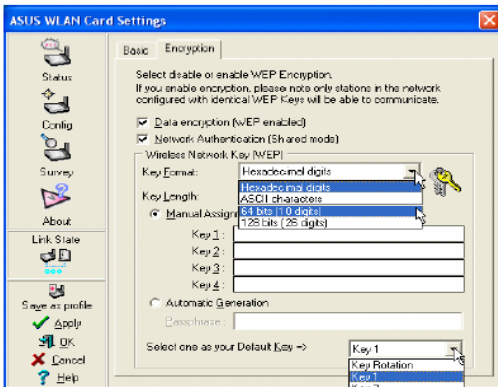
After installing the ASUS WLAN driver and utility, you may need to make some settings before being able to use your wireless connection.



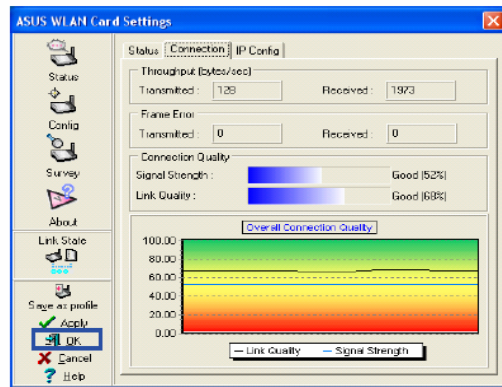
1. Set the Network Name (SSID) to the same name as the SSID set in your access point.



2. Use "Site Survey" if you don't know the name of your access point(s).



3. Encryption settings must also match those set in the access point. Talk with your network administrator if necessary.



4. You can also see the connection quality on the "Connection" page. Click **OK** to exit the utility.

5. Click **Apply** to save your settings and check the "Status" page to see the "Association State". It should show "Connected - xx:xx:xx:xx:xx:xx".

Additional Information

FCC Warning Statement

This device complies with Part 15 of the FCC Rules. Operation is subject to the following two conditions:

- (1) this device may not cause harmful interference, and
- (2) this device must accept any interference received, including interference that may cause undesired operation.

This equipment has been tested and found to comply with the limits for a class B digital device, pursuant to part 15 of the FCC Rules. These limits are designed to provide reasonable protection against harmful interference in a residential installation.

This equipment generates, uses and can radiate radio frequency energy and, if not installed and used in accordance with the instructions, may cause harmful interference to radio communications. However, there is no guarantee that interference will not occur in a particular installation. If this equipment does cause harmful interference to radio or television reception, which can be determined by turning the equipment off and on, the user is encouraged to try to correct the interference by one or more of the following measures:

- Reorient or relocate the receiving antenna.
- Increase the separation between the equipment and receiver.
- Connect the equipment into an outlet on a circuit different from that to which the receiver is connected.
- Consult the dealer or an experienced radio/TV technician for help.

Any changes or modifications not expressly approved by the party responsible for compliance could void the user's authority to operate the equipment.

Prohibition of Co-location

This device and its antenna(s) must not be co-located or operating in conjunction with any other antenna or transmitter

Safety Information

To maintain compliance with FCC's RF exposure guidelines, this equipment should be installed and operated with minimum distance 20cm between the radiator and your body. Use on the supplied antenna. Use on the supplied antenna. Unauthorized antenna, modification, or attachments could damage the transmitter and may violate FCC regulations.

Declaration of Conformity for R&TTE directive 1999/5/EC

Essential requirements – Article 3

Protection requirements for health and safety – Article 3.1a

Testing for electric safety according to EN 60950-1 has been conducted. These are considered relevant and sufficient.

Protection requirements for electromagnetic compatibility – Article 3.1b

Testing for electromagnetic compatibility according to EN 301 489-1 and EN 301 489-17 has been conducted. These are considered relevant and sufficient.

Effective use of the radio spectrum – Article 3.2

Testing for radio test suites according to EN 300 328 has been conducted. These are considered relevant and sufficient.

CE Mark Warning

This is a Class B product, in a domestic environment, this product may cause radio interference, in which case the user may be required to take adequate measures.