



# USB Wireless LAN Adapter (WL-167g)



## User Guide

Control Number: **E1684**

Manual Version: **July 2004**

**Copyright © 2004 ASUSTeK COMPUTER INC. All Rights Reserved.**

No part of this manual, including the products and software described in it, may be reproduced, transmitted, transcribed, stored in a retrieval system, or translated into any language in any form or by any means, except documentation kept by the purchaser for backup purposes, without the express written permission of ASUSTeK COMPUTER INC. ("ASUS").

Product warranty or service will not be extended if: (1) the product is repaired, modified or altered, unless such repair, modification or alteration is authorized in writing by ASUS; or (2) the serial number of the product is defaced or missing.

ASUS PROVIDES THIS MANUAL "AS IS" WITHOUT WARRANTY OF ANY KIND, EITHER EXPRESS OR IMPLIED, INCLUDING BUT NOT LIMITED TO THE IMPLIED WARRANTIES OR CONDITIONS OF MERCHANTABILITY OR FITNESS FOR A PARTICULAR PURPOSE. IN NO EVENT SHALL ASUS, ITS DIRECTORS, OFFICERS, EMPLOYEES OR AGENTS BE LIABLE FOR ANY INDIRECT, SPECIAL, INCIDENTAL, OR CONSEQUENTIAL DAMAGES (INCLUDING DAMAGES FOR LOSS OF PROFITS, LOSS OF BUSINESS, LOSS OF USE OR DATA, INTERRUPTION OF BUSINESS AND THE LIKE), EVEN IF ASUS HAS BEEN ADVISED OF THE POSSIBILITY OF SUCH DAMAGES ARISING FROM ANY DEFECT OR ERROR IN THIS MANUAL OR PRODUCT.

SPECIFICATIONS AND INFORMATION CONTAINED IN THIS MANUAL ARE FURNISHED FOR INFORMATIONAL USE ONLY, AND ARE SUBJECT TO CHANGE AT ANY TIME WITHOUT NOTICE, AND SHOULD NOT BE CONSTRUED AS A COMMITMENT BY ASUS. ASUS ASSUMES NO RESPONSIBILITY OR LIABILITY FOR ANY ERRORS OR INACCURACIES THAT MAY APPEAR IN THIS MANUAL, INCLUDING THE PRODUCTS AND SOFTWARE DESCRIBED IN IT.

Products and corporate names appearing in this manual may or may not be registered trademarks or copyrights of their respective companies, and are used only for identification or explanation and to the owners' benefit, without intent to infringe.

# Contents

Notice .....	v
Safety statements .....	vi
About this guide .....	viii
WL-167g specification summary .....	ix

## Chapter 1: Product introduction

1.1 Welcome! .....	1-2
1.2 Package contents .....	1-2
1.3 Features .....	1-3
1.4 Network setup .....	1-4
1.4.1 Ad-hoc network .....	1-4
1.4.2 Infrastructure network .....	1-4

## Chapter 2: Installation

2.1 System requirements .....	2-2
2.2 Installation procedures .....	2-2
2.2.1 Installing the device drivers and utilities .....	2-2
2.2.2 Installing the device .....	2-3

## Chapter 3: Software support

3.1 Control Center .....	3-2
3.1.1 Control Center icons .....	3-2
3.1.2 Control Center right-click menu .....	3-3
3.1.3 Control Center left-click menu .....	3-3

# Contents

3.2	Wireless Settings .....	3-4
3.2.1	Status .....	3-4
3.2.2	Configuration .....	3-7
3.2.3	Site Survey .....	3-9
3.2.4	About Wireless Settings .....	3-10
3.2.5	Link State .....	3-10
3.2.6	Command icons .....	3-11
3.2.7	Other right-click options .....	3-11
3.3	Mobile Manager .....	3-13
3.3.2	Creating a new configuration .....	3-15
3.3.3	Editing a configuration .....	3-19
3.4	Site Monitor .....	3-23
3.4.1	Launching Site Monitor .....	3-23
3.4.2	Site Monitor main window .....	3-23
3.4.3	Monitoring a connection .....	3-24

## Chapter 4: Troubleshooting

	Troubleshooting .....	4-2
--	-----------------------	-----

# Notices

## Federal Communications Commission Statement

This device complies with FCC Rules Part 15. Operation is subject to the following two conditions:

- This device may not cause harmful interference, and
- This device must accept any interference received, including interference that may cause undesired operation.

This equipment has been tested and found to comply with the limits for a class B digital device, pursuant to Part 15 of the Federal Communications Commission (FCC) rules. These limits are designed to provide reasonable protection against harmful interference in a residential installation. This equipment generates, uses, and can radiate radio frequency energy and, if not installed and used in accordance with the instructions, may cause harmful interference to radio communications. However, there is no guarantee that interference will not occur in a particular installation. If this equipment does cause harmful interference to radio or television reception, which can be determined by turning the equipment off and on, the user is encouraged to try to correct the interference by one or more of the following measures:

- Reorient or relocate the receiving antenna.
- Increase the separation between the equipment and receiver.
- Connect the equipment into an outlet on a circuit different from that to which the receiver is connected.
- Consult the dealer or an experienced radio/TV technician for help.



---

**CAUTION!** You are cautioned that changes or modifications not expressly approved by the party responsible for compliance could void your authority to operate the equipment.

---

Reprinted from the Code of Federal Regulations #47, part 15.193, 1993.  
Washington DC: Office of the Federal Register, National Archives and  
Records Administration, U.S. Government Printing Office.

# Safety statements

## Regulatory Information/Disclaimers

Installation and use of this Wireless LAN device must be in strict accordance with the instructions included in the user documentation provided with the product. Any changes or modifications (including the antennas) made to this device that are not expressly approved by the manufacturer may void the user's authority to operate the equipment. The manufacturer is not responsible for any radio or television interference caused by unauthorized modification of this device, or the substitution of the connecting cables and equipment other than manufacturer specified. It is the responsibility of the user to correct any interference caused by such unauthorized modification, substitution or attachment. Manufacturer and its authorized resellers or distributors will assume no liability for any damage or violation of government regulations arising from failing to comply with these guidelines.



---

**CAUTION!** To maintain compliance with FCC's RF exposure guidelines, this equipment should be installed and operated with minimum distance [20cm] between the radiator and your body. Use on the supplied antenna. Unauthorized antenna, modification, or attachments could damage the transmitter and may violate FCC regulations.

---

## Safety Information

In order to maintain compliance with the FCC RF exposure guidelines, this equipment should be installed and operated with minimum distance **[20cm]** between the radiator and your body. Use only with supplied antenna.

Unauthorized antenna, modification, or attachments could damage the transmitter and may violate FCC regulations.



---

**CAUTION!** Any changes or modifications not expressly approved in this manual could void your authorization to use this device.

---

## MPE Statement

Your device contains a low power transmitter. When device is transmitted it sends out Radio Frequency (RF) signal.

# Safety statements

## FCC Radio Frequency Exposure

This Wireless LAN radio device has been evaluated under FCC Bulletin OET 65C and found compliant to the requirements as set forth in CFR 47 Sections 2.1091, 2.1093, and 15.247(b)(4) addressing RF Exposure from radio frequency devices. The radiation output power of this Wireless LAN device is far below the FCC radio frequency exposure limits. Nevertheless, this device shall be used in such a manner that the potential for human contact during normal operation – as a mobile or portable device but use in a body-worn way is strictly prohibit. When using this device, a certain separation distance between antenna and nearby persons has to be kept to ensure RF exposure compliance. In order to comply with the RF exposure limits established in the ANSI C95.1 standards, the distance between the antennas and the user should not be less than [20cm].

## RF Exposure

The antenna(s) used for this transmitter must not be co-located or operating in conjunction with any other antenna or transmitter.

# About this guide

This user guide contains the information you need to install and configure your ASUS USB Wireless LAN Adapter.

## How this guide is organized

This guide contains the following parts:

- **Chapter 1: Product introduction**

This chapter describes the physical features of the ASUS USB Wireless LAN Adapter. This part also presents the package contents, LED indicators, and recommended network settings.

- **Chapter 2: Hardware installation**

This chapter provides information on how to install the ASUS USB Wireless LAN Adapter.

- **Chapter 3: Configuration**

This chapter provides information on the contents of the support CD.

- **Chapter 4: Troubleshooting**

This chapter contains a troubleshooting guide for solving common problems you may encounter when using the ASUS USB Wireless LAN Adapter.

## Conventions used in this guide

To make sure that you perform certain tasks properly, take note of the following symbols used throughout this guide.



**WARNING:** Information to prevent injury to yourself when trying to complete a task.



**CAUTION:** Information to prevent damage to the components when trying to complete a task.



**IMPORTANT:** Information that you **MUST** follow to complete a task.



**NOTE:** Tips and additional information to aid in completing a task.



# WL-167g specification summary\*

<b>Standard</b>	IEEE 802.11g
<b>Interface</b>	USB 2.0
<b>Technology</b>	Orthogonal Frequency Division Multiplexing (OFDM) Direct Sequence Spread Spectrum (DSSS)
<b>Data transfer rate</b>	802.11g: 54Mbps with auto-fallback to 48, 36, 24, 18, 12, 9, and 6Mbps 802.11b: 11Mbps with auto-fallback to 5.5, 2, and 1Mbps
<b>Network types</b>	Supports Infrastructure and Ad-hoc networks
<b>Frequency band</b>	2.4 GHz ~ 2.5 GHz
<b>Security</b>	64-bit/128-bit configurable WEP encryption
<b>Operating distance</b>	Indoors @ 11Mbps : 130 ft (40 m) Indoors @ 54Mbps : 80 ft (25 m) Outdoors @ 11Mbps LOS** : 1000 ft (310 m) Outdoors @ 54Mbps LOS** : 200 ft (60 m)
<b>Compatibility</b>	Compatible with IEEE 802.11b and 802.11g devices
<b>Power requirement</b>	USB bus-powered
<b>Supported OS</b>	Windows® 98SE/ME/2000/XP
<b>Software support</b>	Control Center One Touch Wizard Wireless Settings Mobile Manager Site Monitor TroubleShooting

\* *Specifications are subject to change without notice.*

\*\* *Line-of-Sight*



The ASUS USB Wireless LAN Adapter operating distance may be shorter if there are walls, barriers, or interferences in the home layout or operating environment.



# *Chapter 1*

This chapter describes the physical features of the ASUS USB Wireless LAN Adapter. This part presents the package contents, LED indicators, and recommended network settings.

## **Product introduction**

# 1.1 Welcome!

Thank you for choosing the ASUS USB Wireless LAN Adapter!

The ASUS USB Wireless LAN Adapter is an easy-to-install and use wireless LAN adapter. Conforming to IEEE 802.11g standard for wireless local area network (WLAN), the ASUS USB Wireless LAN Adapter is capable of up to 54Mbps data transmission rate using the Direct Sequence Spread Spectrum (DSSS) and the Orthogonal Frequency Division Multiplexing technologies.

The ASUS USB Wireless LAN Adapter also comes with the latest wireless technology developed by ASUS to keep you ahead in the world of wireless computing.

# 1.2 Package contents

Check the following items in your ASUS USB Wireless LAN Adapter package. Contact your retailer if any item is damaged or missing.

- ASUS USB Wireless LAN Adapter (WL-167g)
- USB 2.0 extension cable (type A to type A)
- USB 2.0 universal joint
- Neck lace
- Support CD
- Quick Start Guide



---

Unless otherwise specified, the term “device” in this User Guide refers to the ASUS USB Wireless LAN Adapter.

---

# 1.3 Features

USB 2.0, OFDM, DSSS, Supports Infrastructure and Ad-hoc networks, Compatible with IEEE 802.11b and 802.11g devices, USB bus-powered, Software support

## 1.4 LED indicators

The device comes with a Power, Activity, and Link LED indicators. Refer to the table below for LED indications.



LED	Status	Indication
PWR	ON	The adapter is receiving power from the USB port.
	OFF	The adapter is not receiving power from the USB port. The adapter may be disconnected or the computer is OFF.
ACT	Blinking	The adapter is transmitting or receiving data packets.
	OFF	There is no wireless data activity.

# 1.5 Network setup

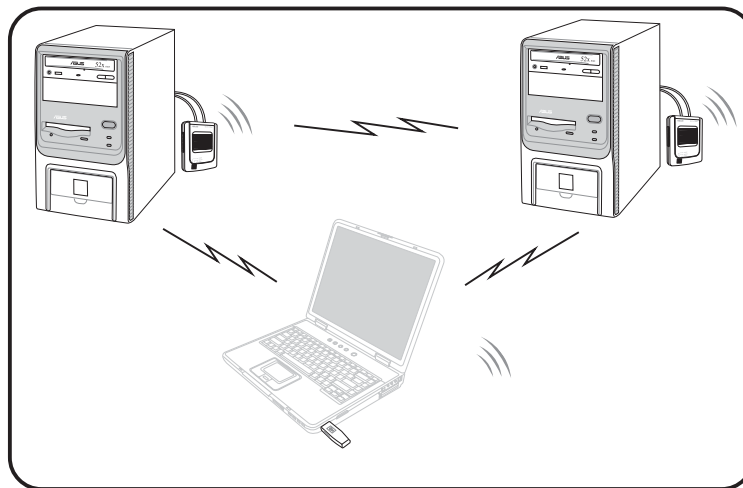
The ASUS USB Wireless LAN Adapter may be used in both Ad-hoc and Infrastructure network types. The following sections describe the device functions in these network types.



Determine your network settings before installing the device to avail all its features. The following network settings are recommended.

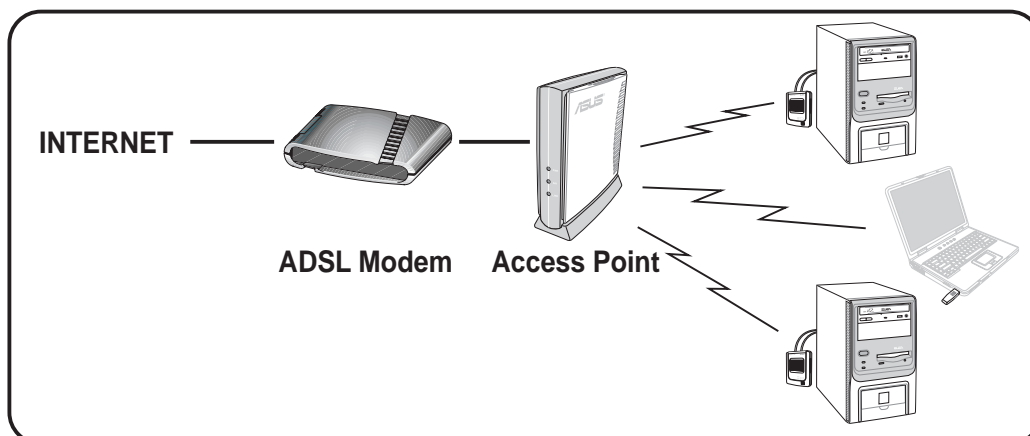
## 1.5.1 Ad-hoc network

In an Ad-hoc network type, the device connects to another wireless LAN adapter in a wireless network. No access point (AP) is present in this wireless environment.



## 1.5.2 Infrastructure network

In an Infrastructure network, the wireless network is centered on an access point (AP) that provides a central link for wireless clients to communicate with each other or with a wired network.



# *Chapter 2*

This chapter provides information on how to install the ASUS USB Wireless LAN Adapter.

## **Installation**

## 2.1 System requirements

Before installing the ASUS USB Wireless LAN Adapter, make sure that your system meets the following requirements:

- Intel® Pentium® 4 or AMD K7/K8 system
- Minimum 64MB system memory
- Windows® 98SE/ME/2000/XP operating system
- Optical drive (for software installation)
- An available USB port (USB 2.0 recommended because USB 1.1 cannot achieve maximum wireless performance)

## 2.2 Installation procedures

Follow these instructions to install the ASUS USB Wireless LAN Adapter in your computer.

1. Install the device drivers and utilities from the support CD.
2. Connect the device to your computer.

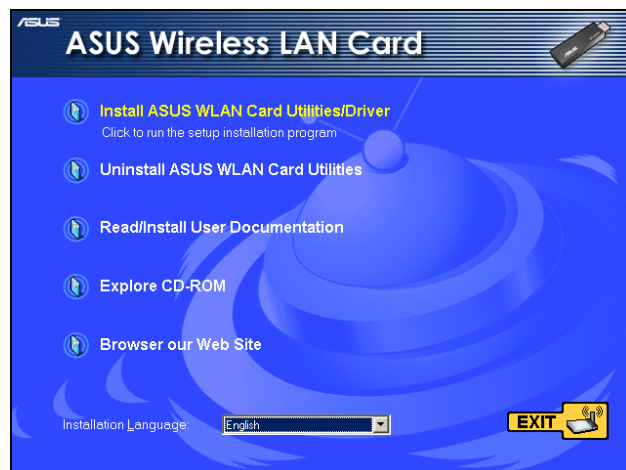


**NOTE:** You must install the ASUS USB Wireless LAN Adapter drivers and utilities before connecting the device to your computer.

### 2.2.1 Installing the device drivers and utilities

To install the device driver and utilities in your computer:

1. Insert the support CD to the optical drive.
2. Click “**Install ASUS WLAN Card Utilities/Driver**” when the ASUS Wireless LAN Card installation window appears.
3. The device drivers and utilities are copied into your computer.



**NOTE:** If Autorun is NOT enabled in your computer, browse the contents of the support CD and double click the Setup.exe file to run the CD.

\* See limitations on page 4-5

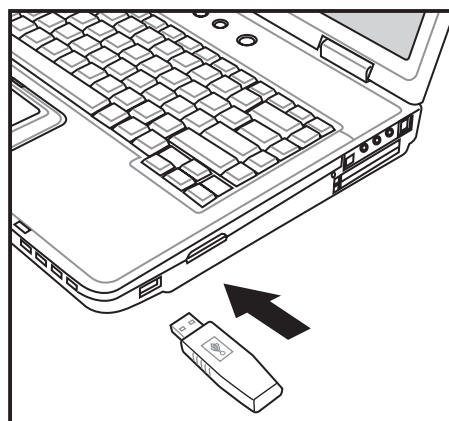


# Installation procedures (Cont.)

## 2.2.2 Installing the device

To install the ASUS USB Wireless LAN Adapter in your computer:

1. Insert to any USB port.
2. When “Found New Hardware” dialog box appears, select “Install...automatically” and follow the instructions.



Windows® 2000 users - A **Digital Signature Not Found** dialog box may appear. Click **Yes** to proceed.



Windows® XP users - A **Windows Logo Testing Not Found** dialog box may appear. Click **Continue Anyway** to proceed.

3. After completing installation, configure the ASUS USB Wireless LAN Adapter using **ASUS Wireless Settings**.

## Support Software

### Control Center

The Control Center utility is a management software that launches applications and configures network settings. The Control Center starts automatically when the system boots and displays the Control Center icon in the Windows® taskbar. The Control Center icon serves as an application launcher, and indicator of signal quality and Internet connection.



### ***Control Center right-click menu***

Right-clicking the Control Center icon displays the right-click menu. The following sections describe the right-click menu utilities.



