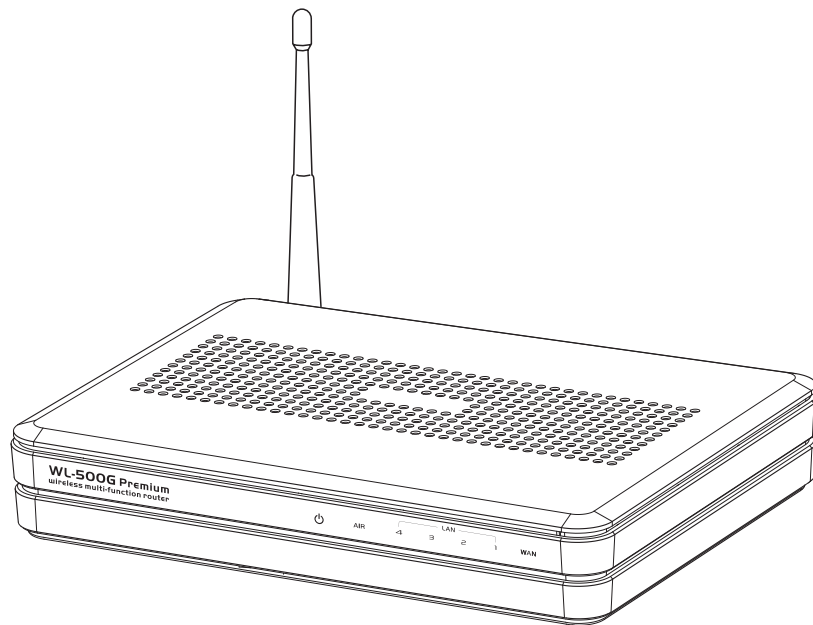




WL-500gP Wireless Router



User Manual

Manufacturer Contact Information

ASUSTeK COMPUTER INC. (Asia-Pacific)

Company address: 15 Li-Te Road, Beitou, Taipei 11259

General (tel): +886-2-2894-3447 Web site address: www.asus.com.tw

General (fax): +886-2-2894-7798 General email: info@asus.com.tw

ASUS COMPUTER INTERNATIONAL (America)

Company address: 44370 Nobel Drive, Fremont, CA 94538, USA

General (fax): +1-510-608-4555 Web site address: usa.asus.com

Technical support

General support: +1-502-995-0883 Support (fax): +1-502-933-8713

Online support: <http://vip.asus.com/eservice/techserv.aspx>

ASUS COMPUTER GmbH (Germany & Austria)

Company address: Harkort Str. 25, D-40880 Ratingen, Germany

General (tel): +49-2102-95990 Web site address: www.asuscom.de

General (fax): +49-2102-959911 Online contact: www.asuscom.de/sales

Technical support

Components: +49-2102-95990 Online support: www.asuscom.de/support

Notebook: +49-2102-959910 Support (fax): +49-2102-959911



Table of contents

1. Package contents	2
2. Connecting ADSL modem and wireless router	2
1) Cable connection	2
2) Status indicators	3
3) Wall mount option	3
3. Getting started	4
1) Wired connection	4
2) Wireless Connection	4
3) Setting IP address for wired or wireless client	4
4) Configuring the wireless router	5
5) Quick setup	6
4. Wireless router features	11
1) Choosing an appropriate operation mode	11
2) Setting up wireless encryption	12
3) Setting up virtual server in your LAN	13
4) Setting up virtual DMZ in your LAN	14
5) Setting up DDNS	14
6) Setting up Bandwidth Management.....	18
5. Application features	20
1) Sharing USB storage	20
2) Download Master	22
3) Web camera	23
4) Sharing USB printer	26
5) Playing stream media through Xbox360	29
6. Setting up using ASUS utility	32
1) Utility Installation for WL-500gP	32
2) EZSetup	33
7. Troubleshooting	35
8. Appendix	37

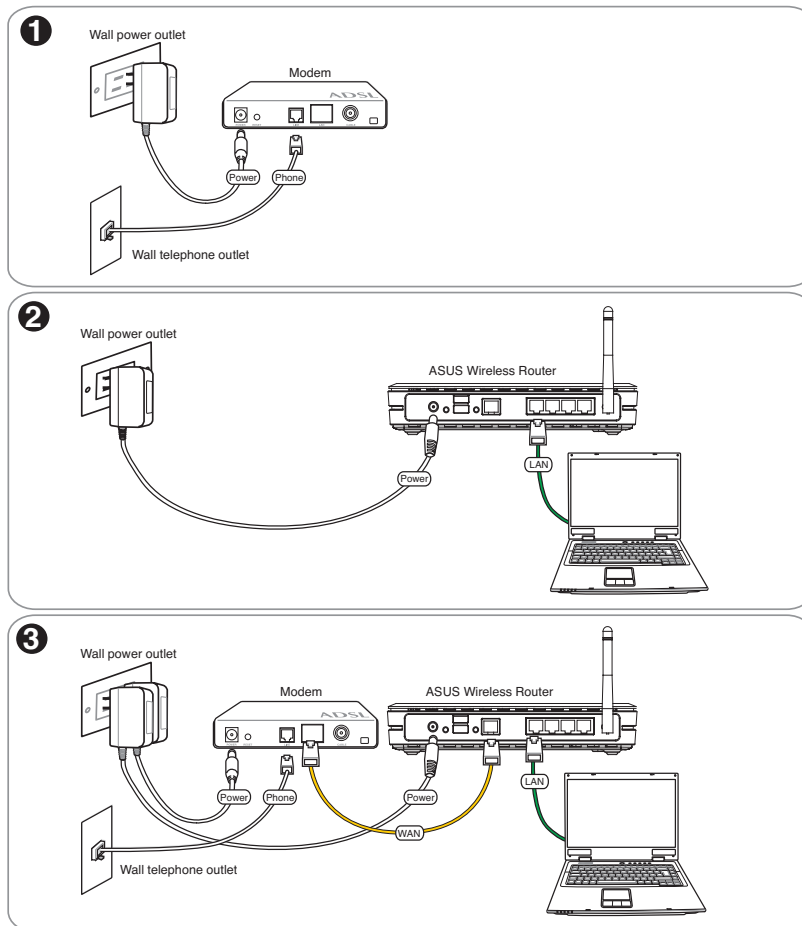


1. Package contents

- WL-500gP wireless router x 1
- Power adapter x 1
- Utility CD x 1
- RJ45 cable x 1
- Quick Start Guide x 1

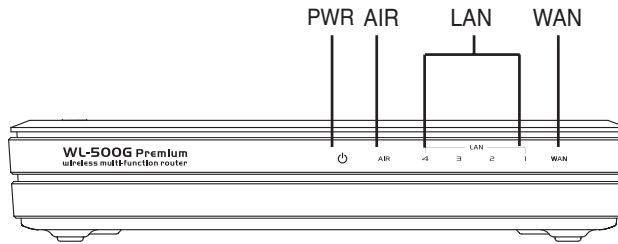
2. Connecting ADSL modem and wireless router

1) Cable connection





2) Status indicators



PWR (Power)

Off	No power
On	System ready
Flashing-slow	Firmware upgrade failed
Flashing-quick	EZsetup processing

AIR (Wireless Network)

Off	No power
On	Wireless system ready
Flashing	Transmitting or receiving data (wireless)

WAN (Wide Area Network)

Off	No power or no physical connection
On	Has physical connection to an Ethernet network
Flashing	Transmitting or receiving data (through Ethernet cable)

LAN 1-4 (Local Area Network)

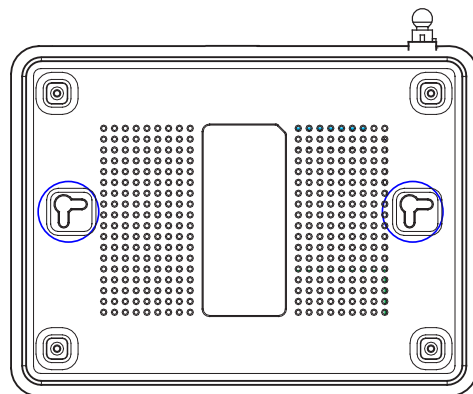
Off	No power or no physical connection
On	Has physical connection to an Ethernet network
Flashing	Transmitting or receiving data (through Ethernet cable)

3) Wall mount option

Out of the box, ASUS WL-500gP Wireless Router is designed to sit on a raised flat surface like a file cabinet or book shelf. The unit may also be converted for mounting to a wall or ceiling.

Follow these steps to mount the ASUS Wireless Router to a wall:

1. Look on the underside for the two mounting hooks.
2. Mark two upper holes in a flat surface.
3. Tighten two screws until only 1/4" is showing.
4. Latch the hooks of the ASUS Wireless Router onto the screws.



Note: Re-adjust the screws if you cannot latch the ASUS Wireless Router onto the screws or if it is too loose.



3. Getting started

The ASUS WL-500gP Wireless Router can meet various working scenarios with proper configuration. The default settings of the wireless router may need change so as to meet your individual needs. Therefore, before using the ASUS Wireless Router, check the basic settings to make sure they all work in your environment.

ASUS provides a utility named EZSetup for fast wireless configuration. If you would like to use EZSetup for your wireless network configuration, refer to chapter 6 for details.



Note: Wired connection for initial configuration is recommended to avoid possible setup problems due to wireless uncertainty.

1) Wired connection

The ASUS WL-500gP Wireless Router is supplied with an Ethernet cable in the package. Since the ASUS Wireless Router has integrated auto-crossover function, therefore, you can use either straight-through or crossover cable for wired connection. Plug one end of the cable to the LAN port on the rear panel of the router and the other end to the Ethernet port on your PC.

2) Wireless Connection

For establishing wireless connection, you need an IEEE 802.11b/g compatible WLAN card. Refer to your wireless adapter user manual for wireless connection procedures. By default, the SSID of ASUS Wireless Router is “default” (in lower case), encryption is disabled and open system authentication is used.

3) Setting IP address for wired or wireless client

To access WL-500gP Wireless Router, you must have correct TCP/IP settings on your wired or wireless clients. Set the IP addresses of the clients within the same subnet of WL-500gP.

Getting IP address Automatically

The ASUS Wireless Router integrates DHCP server functions, therefore, you can make your PC get IP address automatically from the ASUS Wireless Router.

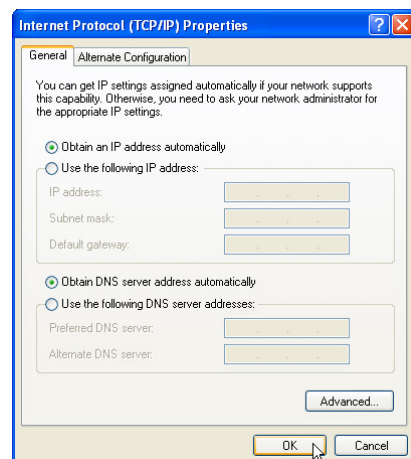


Note: Before rebooting your PC, switch ON the wireless router and make sure the router is in ready state.

Setting up IP address Manually

To set IP address manually, you need to know the default settings of the ASUS Wireless Router:

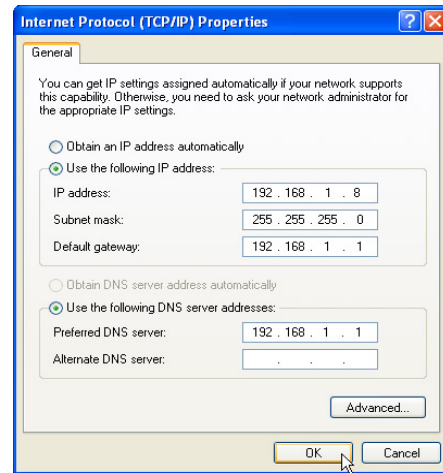
- IP address 192.168.1.1
- Subnet Mask 255.255.255.0





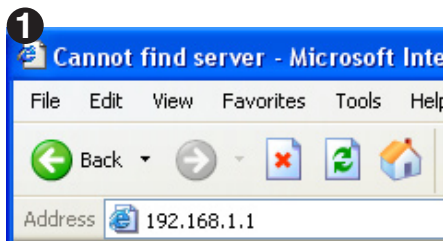
To set up the connection with a manually assigned IP address, the address of your PC and the wireless router must be within the same subnet:

- IP address: 192.168.1.xxx (xxx can be any number between 2 and 254. Make sure the IP address is not used by other device)
- Subnet Mask: 255.255.255.0 (same as WL-500gP)
- Gateway: 192.168.1.1 (IP address of WL-500gP)
- DNS: 192.168.1.1 (WL-500gP), or assign a known DNS server in your network.



4) Configuring the wireless router

Follow the steps below to enter the Web configuration interface of WL-500gP.

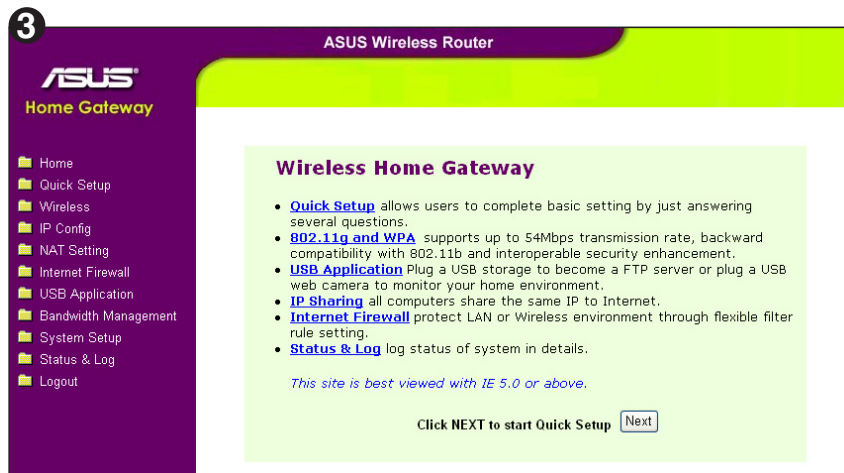


Enter the following address in your web browser: <http://192.168.1.1>



Defaults

User name: **admin** Password: **admin**



After logging in, you can see the ASUS Wireless Router home page. The homepage displays quick links to configure the main features of the wireless router.