

5. Application features

ASUS WL-500gP Wireless Router provides two USB2.0 ports for connecting USB storage, USB camera, and USB printer, therefore, you can monitor the working environment, share data and printer with both wired and wireless users in your network. Furthermore, WL-500gP provides a download utility - Download Master to facilitate and share the download files.

1) Sharing USB storage

To use this feature, you need to plug a USB hard disk to the USB2.0 port on the rear panel of WL-500gP. Make sure the hard disk is formatted and partitioned properly.

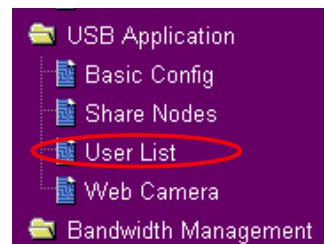


Note: FAT32 has a 2GB file size limitation and do not support files above that size. If you want to use files of above 2GB, you must format the disk to EXT2 file system.

Creating user account

To share the data in the USB storage, you need to create user accounts first.

1. Click **USB Application -> User List** in the left side menu to open the configuration page.



2. Input **User Name** and **Password** for the accounts. Click **Add** to add the account to the list.

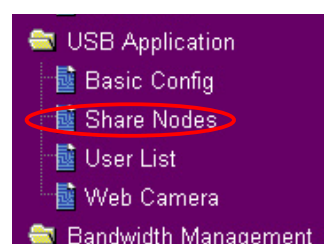
USB Application - User List		Add	Del
User Name	Password		
user3	pass3		
user1	pass1		
user2	pass2		
		Restore	Finish
		Apply	

3. To delete an account, select the account from the list and click **Del**.
4. Click **Apply** to apply the changes and restart the wireless router.

Creating share folder and access right

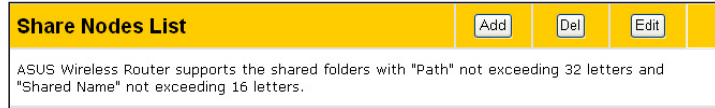
You can create a new share folder or share an existing folder in your hard disk.

1. Click **USB Application -> Share Nodes** in the left side menu to open the configuration page.





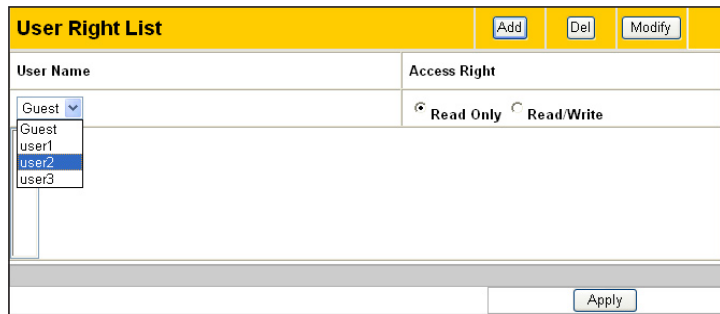
2. Click **Add** to add a share folder.



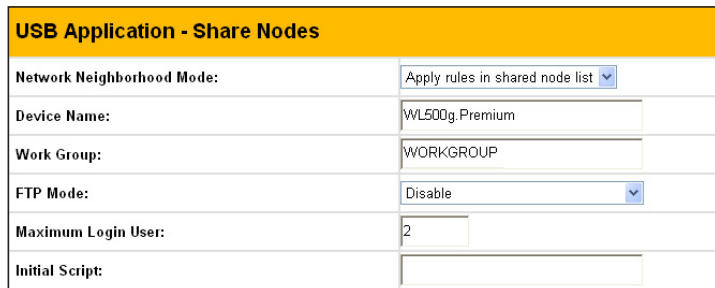
3. Select the folder you want to share from Folder Manager and click **Ok**. To create a share folder, input the folder name in **Add Folder** field and press **Add**.



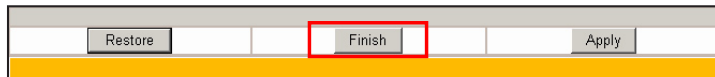
4. Define the access right for the share folder by appoint **User Name** and **Access Right**. Click **Add** to add the access right rule. When finished, click **Apply** to save the configuration.



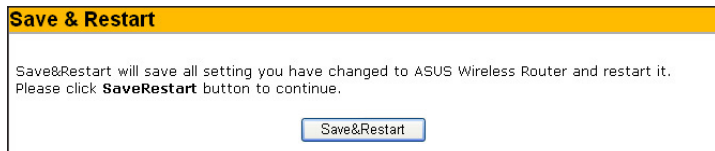
5. Set Network Neighbourhood Mode to **Apply rules in shared node list**, Work Group to **WORKGROUP** to enable all computers within WORKGROUP to access WL-500gP USB storage.



6. Click **Finish**.



7. Click **Save & Restart** to restart the wireless router and activate the settings.



8. Open **My Network Place** from a computer connected to WL-500gP. Click **view work group computers**, you can see WL-500gP in the **Workgroup** category. All files on the USB storage are ready for sharing.



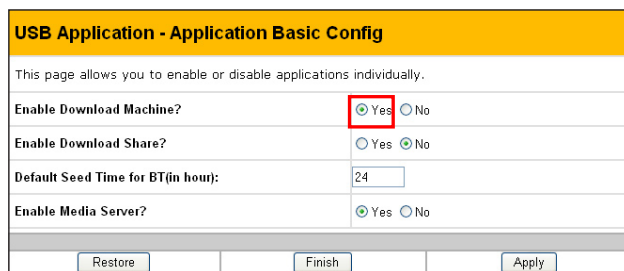
2) Download Master

Download Master function helps to manage the download tasks without turning your computer on. To use this function, you need to mount a USB storage to WL-500gP Wireless Router. To use this function, you need to install ASUS Utilities from the support CD. Refer to chapter 6 for utility installation procedures.

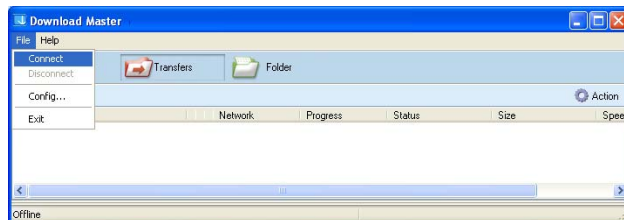
1. Click **Basic Config** page in USB Application folder.



2. Set **Enable Download Master to Yes**. If you want to share the downloaded file with your LAN users, set **Enable Download Share to Yes**. Click **Finish** and save and restart the wireless router.

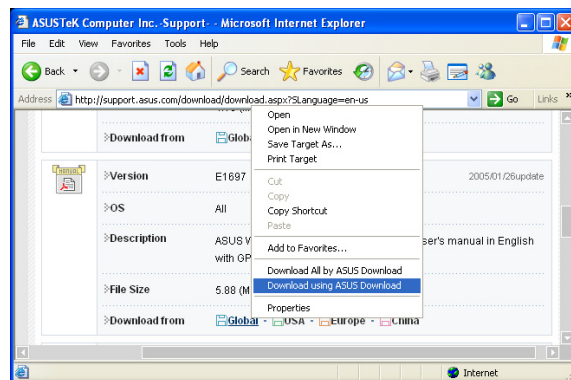


3. Open Download Master from Start -> All Programs -> ASUS Utility -> WL-500gP Wireless Router -> Download Master. Click **File -> Connect** to associate with WL-500gP.



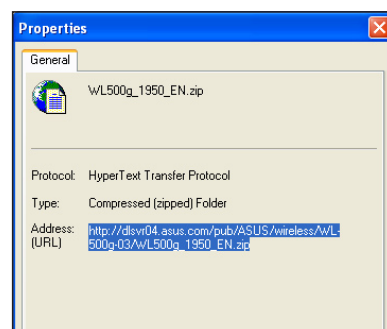
4. **HTTP download (1)**

Right click the download link on the Web page and click **Download using ASUS Download**. A window in step 5 appears to indicate download progress.



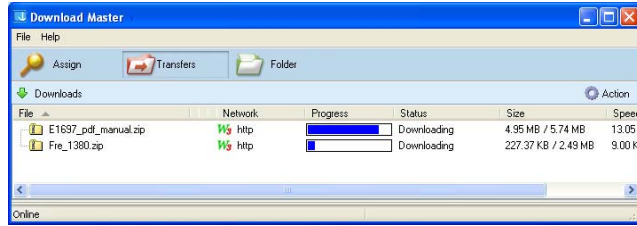
- HTTP download (2)**

Right click the download link on the Web page and click **Properties**. Copy the download **Address (URL)**.

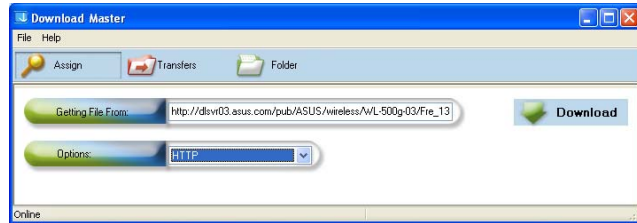




If you select **Download using ASUS Download**, you can see the download task is added to the **Transfer** list. The blue bars indicate the progress of download tasks.

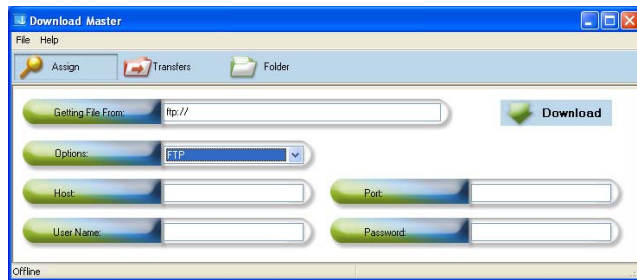


If you copy the download address, click **Assign** button in the utility. Paste the address into **Getting File From** box, select **HTTP** from **Options**, and click **Download** button to start.



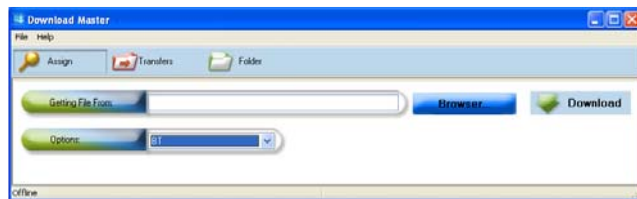
5. FTP download

Click **Transfer** button of the Download Master and select **FTP** in the **Options** field. Input the FTP site address, Port number, User Name, Password. Click **Download** to start.

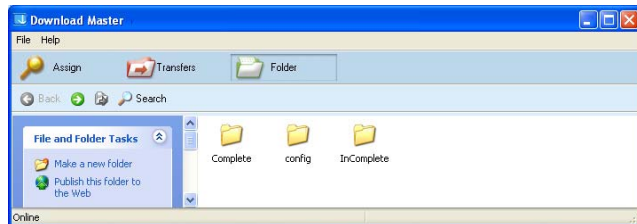


6. BT download

Save the BT seed on your computer. Click **Transfer** button of the Download Master and select **BT** in the Options field. Click **Browse** to locate the seed file. Click **Download** to start.



7. Click **Folder** button to view the download file. Open the **Complete** folder to view or copy the finished files to your local hard disk. The unfinished tasks are kept in **InComplete** folder.



3) Web camera

The ASUS Wireless Router implements several applications for a USB Web camera, enabling you to capture images and send them over the Internet. For this function, you need to plug a USB camera onto WL-500gP and enable ActiveX for your Web browser.

Web camera



1. Click **Web Camera** page in USB Application folder.
2. **Enable Web Camera** - Selecting LAN Only enables Web Camera for LAN users. Selecting LAN and WAN enables Web Camera for both LAN users and WAN users through firewall.



Web Camera Mode - Select the appropriate camera mode from the drop down list. ActiveX Only enables user to execute ActiveX clients on an Windows® IE platform and get the best image quality. ActiveX and Refresh enables user to get a basic image on both IE and other browsers. Refresh Only provides to all users still images which are refreshed in a specified interval.

USB Application - Web Camera	
Enable Web Camera?	LAN Only
Web Camera Mode:	ActiveX and Refresh
Web Camera Driver:	PWC 8.8
Image Size:	320 X 240 Preview
Sense Level:	Medium
Refresh Time in seconds:	1
Caption String:	Web Camera Live Demoll
HTTP Port:	7776 <input type="checkbox"/> Password Checking
ActiveX Port:	7777

Web Camera Driver - When you plug a supported Web Camera into the USB2.0 port in the wireless router, the appropriate driver is selected automatically. Refer to the USB Web Camera support list on ASUS Website (www.asus.com) for supported Web Camera models.

Image Size - Select the image size from the drop down list. 320 x 240 provides a larger image while 160 x 120 provides faster transmission. Click Preview to see the effect.

Sense Level - This field indicates the sensitivity at which image movement is detected.

Refresh Time in Seconds - This field indicates the time interval in seconds in which the system reloads images. The range of values is 1~65535.

HTTP Port - This field indicates the port that HTTP server listens on to communicate. For example, by default, you can connect to your web camera by using <http://192.168.1.1:7776> without password checking. (The password checking field is unchecked.)

ActiveX Port - This field indicates the port that server listens on to communicate with ActiveX clients.

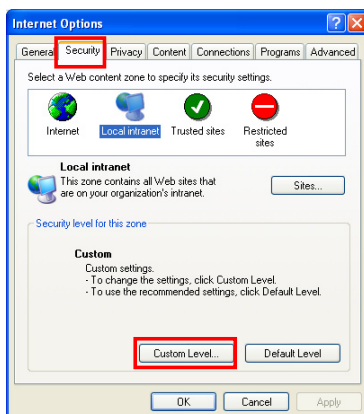
Enabling ActiveX for your IE

If you use Internet Explorer®, you need to enable ActiveX or the Web Camera cannot function properly. For clients using Netscape or other browsers, ignore this part.

1. Open Internet Explorer 5.0 or above on your computer, click **Tools -> Internet Options**.



3. Select **Security** tab and click **Custom Level** button.



4. Enable the activeX controls and plug-ins. By default, these items are disabled.

