



5) Playing stream media through Xbox360

If you have a set of Xbox360, you can connect it to WL-500gP and play the media files stored in the hard disk on your television! To use this function, make sure you have installed a wireless card on your Xbox360 and enabled Media Server function on your WL-500gP.

Enable Media Sever on WL-500gP

1. Click **Basic Config** page in USB Application folder.



2. Select **Enable Media Sever** and press **Apply**. WL-500gP is ready to share the media files stored in the USB hard disk.

USB Application - Application Basic Config	
This page allows you to enable or disable applications individually.	
Enable Download Machine?	<input checked="" type="radio"/> Yes <input type="radio"/> No
Enable Download Share?	<input type="radio"/> Yes <input checked="" type="radio"/> No
Default Seed Time for BT(in hour):	24
Enable Media Server?	<input checked="" type="radio"/> Yes <input type="radio"/> No
<input type="button" value="Restore"/> <input type="button" value="Finish"/> <input type="button" value="Apply"/>	



Note: Before connection, access the USB hard disk from My Network Place and copy your music to **/Music** directory and photos to **/Photo** directory.

Playing media files from Xbox360

1. Open Xbox360 and enter **System -> Edit Settings** configuration page to setup wireless network connection.



2. Set **IP Settings** to **Automatic** and make sure Xbox360 gets a valid IP address.





3. To play music from the USB hard disk, select **Media** page -> **Music**.



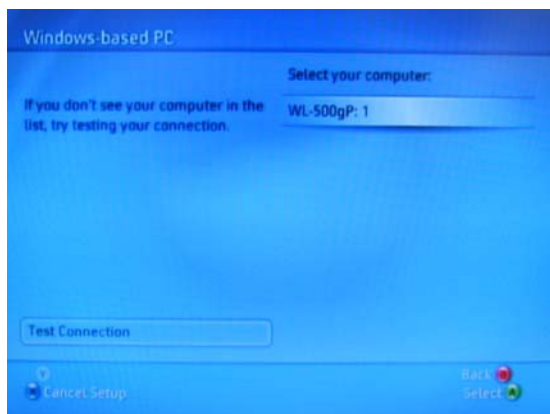
4. Select **Computer**.



5. Select **Yes, continue** when prompted to install Window Media Connect on your PC.



6. Xbox360 automatically searches and find the WL-500gP. Select WL-500gP to establish wireless connection.

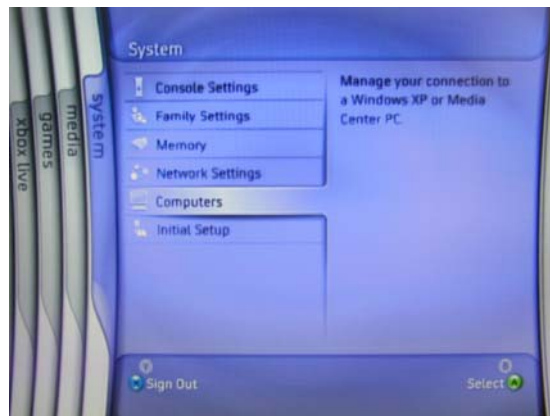




7. Select Music folder in the hard disk and browse through the music list. Select the music you want to play.



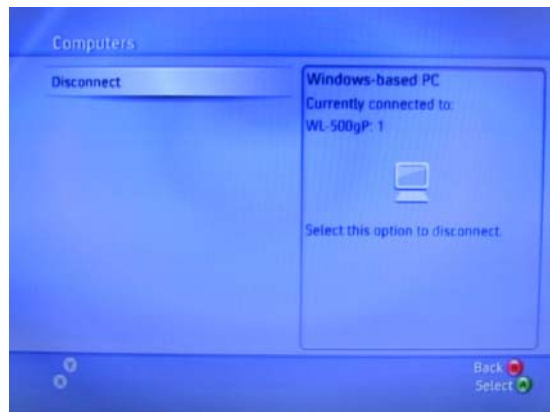
8. To disconnect from WL-500gP, enter **System** page and select **Computers**.



9. Select **Windows-based PC**. The screen displays the currently connected PC.



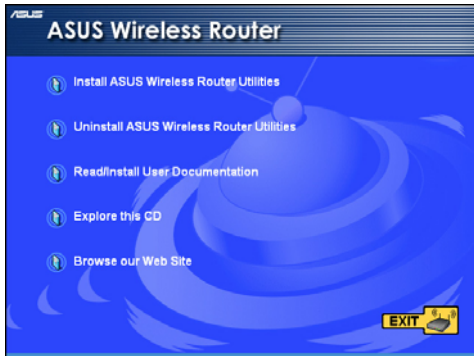
10. Select **Disconnect**.



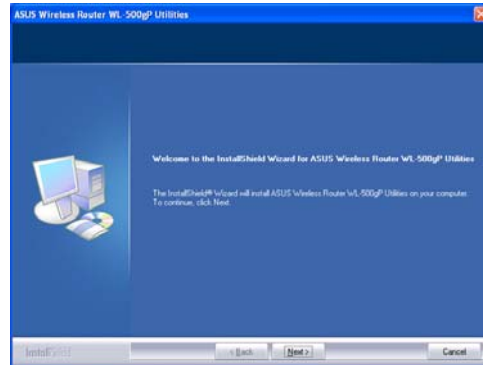
6. Setting up using ASUS utility

1) Utility Installation for WL-500gP

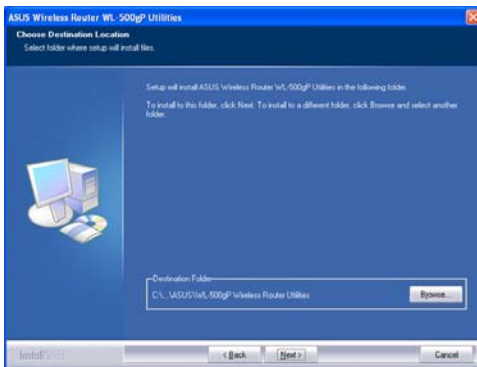
1. Click **Install ASUS Wireless Router Utilities** to run the setup installation program.



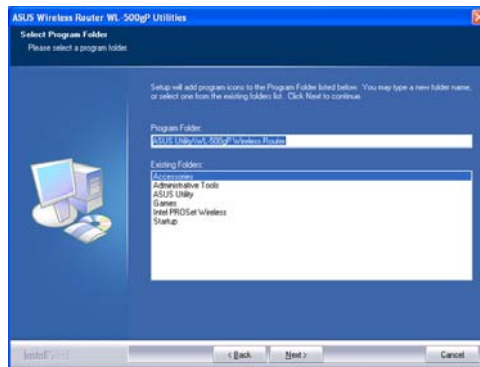
2. Click **Next** to continue.



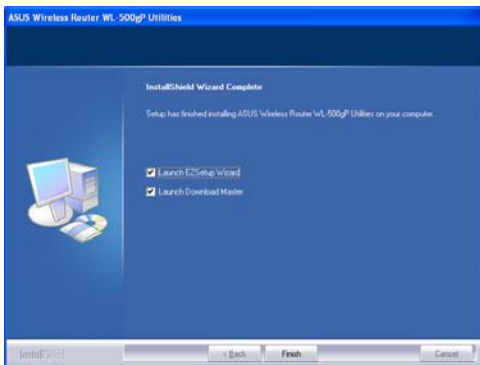
3. Click **Next** to install the utility in the designated location.



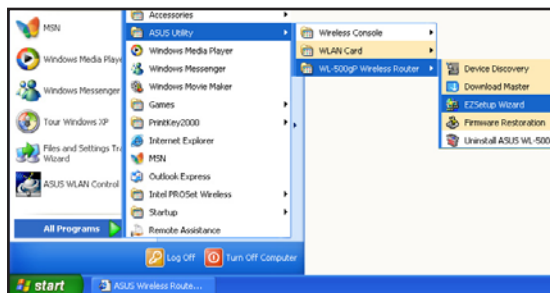
4. Select a program folder and click **Next**.



5. Press **Finish** to quit the installation program.



6. Open the **EZSetup Wizard**.

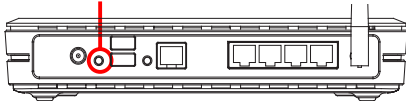




2) EZSetup

Wireless LAN setup will complete in two easy steps. First open the EZSetup utility from Start menu, then push the EZSetup button on the rear panel for 3 seconds.

- 1 Push **EZSetup** over 3 sec. and release.



1) If the setup button is pushed without running the EZSetup wizard utility, the PWR indicator will flash and Internet connections will pause for a short period but will then return to normal operation without change.

2) To use EZSetup, we recommend using an ASUS wireless adapter such as WL-106gM, WL-100gE, and WL-169gE.



Click the **EZSetup** button in the utility.

Note: Use EZSetup Wizard with one wireless client at a time. If the wireless client computer cannot discover the wireless router while in EZSetup mode, please shorten the distance between the client and the router.



Wireless settings, including network name and network keys, are generated automatically. You can modify these settings manually. Note if your wireless router is configured before, select **Preserve original wireless router settings** to use the current value. Click **Next** to continue.



If you need to configure the ISP settings for your wireless router, select **Configure ISP settings**, click **Next** and follow the instructions to complete the settings.



Setup is complete, press **Print/Save Wireless LAN Settings** button for future reference. Click **Finish** to exit the EZSetup utility.