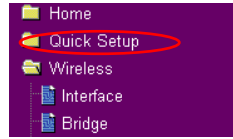




5) Quick setup

To start quick setup, click **Next** to enter the "Quick Setup" page. Follow the instructions to setup the ASUS Wireless Router.



1. Select your time zone and click **Next**.

Select Time Zone

Please choose the time zone where you are locating in.

Time Zone: GMT+8:00: Beijing, Hong Kong

Next

2. ASUS wireless router supports five types of ISP services: cable, PPPoE, PPTP, static WAN IP, and Telstra BigPond. Select your connection type and click **Next** to continue.

Select Internet Connection Type

ASUS Wireless Router supports several kinds of connection to Internet through its WAN port. Please select connection type you need. In addition, before getting on internet, please make sure you have connected ASUS Wireless Router's WAN port to your DSL or Cable Modem.

Cable Modem or other connection type that gets IP automatically.

ADSL connection that requires username and password. It is known as PPPoE.

ADSL connection that requires username, password and IP address. It is known as PPTP.

ADSL or other connection type that uses static IP address.

Telstra BigPond Cable Modem Service.

Prev **Next**

Cable or dynamic IP user

If you are using services provided by cable ISP, select **Cable Modem or other connection that gets IP automatically**. If your ISP provides you with the hostname, the MAC address, and the heartbeat server address, fill these information into the boxes on the setting page; if not, click **Next** to skip this step.

Fill Information Required by ISP

Your ISP may require the following information to identify your account. If not, just press Next to ignore it.

Host Name:

MAC Address:

Heart-Beat Server:

Prev **Next**

PPPoE user

If you use PPPoE service, select **ADSL connection that requires username and password**. It is known as PPPoE. You need to input the username and password provided by your ISP. Click **Next** to continue.

WAN IP Setting

Fill TCP/IP setting for WL500gP to connect to Internet through WAN port.

Get IP automatically? Yes No

IP Address:

Subnet Mask:

Default Gateway:

Get DNS Server automatically? Yes No

DNS Server 1:

DNS Server 2:

Prev **Next**

Set Your Account to ISP

If you apply an account with dynamic IP. You must get user account and password from your ISP. Please fill this data into the following fields carefully. Or, if you apply an ADSL account with static IP, just ignore user name and password information.

User Name: jso@hinet.net

Password:

Prev **Next**



PPTP user

If you are using PPTP services, select **ADSL connection that requires username, password and IP address**. Fill in the username, the password and the IP address provided by your ISP into the fields. Click **Next** to continue.

Set Your Account to ISP	
If you apply an account with dynamic IP. You must get user account and password from your ISP. Please fill this data into the following fields carefully. Or, if you apply an ADSL account with static IP, just ignore user name and password information.	
User Name:	<input type="text" value="herk036@adsl-comfort"/>
Password:	<input type="password" value="*****"/>
<input type="button" value="Prev"/> <input type="button" value="Next"/>	

WAN IP Setting	
Fill TCP/IP setting for WL500GP to connect to Internet through WAN port.	
Get IP automatically?	<input type="radio"/> Yes <input checked="" type="radio"/> No
IP Address:	<input type="text" value="219.31.111.12"/>
Subnet Mask:	<input type="text" value="255.255.255.0"/>
Default Gateway:	<input type="text" value="219.31.111.1"/>
Get DNS Server automatically?	<input type="radio"/> Yes <input checked="" type="radio"/> No
DNS Server 1:	<input type="text" value="168.95.1.1"/>
DNS Server 2:	<input type="text"/>
<input type="button" value="Prev"/> <input type="button" value="Next"/>	

Static IP user

If you are using ADSL or other connection type that uses static IP address, select **ADSL or other connection type that uses static IP address**. Input the IP address, the subnet mask, and the default gateway provided by your ISP. You can specify DNS servers, or get DNS information automatically.

WAN IP Setting	
Fill TCP/IP setting for WL500GP to connect to Internet through WAN port.	
Get IP automatically?	<input type="radio"/> Yes <input checked="" type="radio"/> No
IP Address:	<input type="text" value="219.31.111.12"/>
Subnet Mask:	<input type="text" value="255.255.255.0"/>
Default Gateway:	<input type="text" value="219.31.111.1"/>
Get DNS Server automatically?	<input type="radio"/> Yes <input checked="" type="radio"/> No
DNS Server 1:	<input type="text" value="168.95.1.1"/>
DNS Server 2:	<input type="text"/>
<input type="button" value="Prev"/> <input type="button" value="Next"/>	

- After the connection type setting is complete, you are to set up your wireless interface. Specify to your wireless router an SSID (Service Set Identifier), which is a unique identifier attached to packets sent over WLAN. This identifier emulates a password when a device attempts to communicate with your wireless router via WLAN.

Configure Wireless Interface	
First step to set your wireless interface is to give it a name, called SSID. In addition, if you would like to protect transmitted data, please select the Security Level and assign a password for authentication and data transmission if it is required.	
SSID:	<input type="text" value="WL500W"/>
Security Level:	<input type="button" value="Low(None)"/> <input checked="" type="button" value="Medium(WEP-64bits)"/> <input type="button" value="Medium(WEP-128bits)"/> <input type="button" value="High(WPA-PSK)"/>
Password:	<input type="password"/>
WEP Key 1 (10 or 26 hex digits):	<input type="password"/>
WEP Key 2 (10 or 26 hex digits):	<input type="password"/>
WEP Key 3 (10 or 26 hex digits):	<input type="password"/>
WEP Key 4 (10 or 26 hex digits):	<input type="password"/>
Key Index:	<input type="text"/>
<input type="button" value="Prev"/> <input type="button" value="Finish"/>	

If you want to protect transmitted data, select a **Security Level** to enable encryption methods.

Medium: Only users with the same WEP key settings can connect to your wireless router and transmit data using 64bits or 128bits WEP key encryption.

High: Only users with the same WPA pre-shared key settings can connect to your wireless router and transmit data using TKIP encryption.



- Input four sets of WEP keys in the WEP Key fields (10 hexadecimal digits for WEP 64bits, 26 hexadecimal digits for WEP 128bits). You can also let the system generate the keys by inputting a Passphrase. Record the Passphrase and the WEP keys in your notebook, then click **Finish**.

For example, if we select WEP 64bits encryption mode and input 11111 as the Passphrase, the WEP Keys are generated automatically.

- Click **Save&Restart** to restart the wireless router and activate the new settings.

Configure Wireless Interface

First step to set your wireless interface is to give it a name, called SSID. In addition, if you would like to protect transmitted data, please select the Security Level and assign a password for authentication and data transmission if it is required.

SSID:	WL500W
Security Level:	Medium(WEP-64bits) ▼
Passphrase:	*****
WEP Key 1 (10 or 26 hex digits):	*****
WEP Key 2 (10 or 26 hex digits):	*****
WEP Key 3 (10 or 26 hex digits):	*****
WEP Key 4 (10 or 26 hex digits):	*****
Key Index:	1 ▼

Save & Restart

You have finished the basic setting. You can just press **Save&Restart** button to apply your setting or perform other advanced settings.

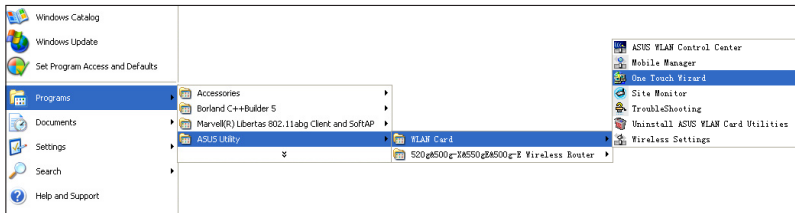


Note: We recommend using WL-100W wireless adapters to connect WL-500W so as to achieve high speed data transmission.

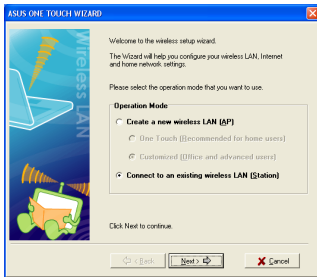
- To connect the wireless router from a wireless client, you can use Windows® Wireless Zero Configuration service to set up the connection. If you use ASUS Wireless Card on your computer, you can use the One Touch Wizard utility supplied in WLAN Card support CD for wireless connection.

Configuring ASUS WLAN Card with One Touch Wizard

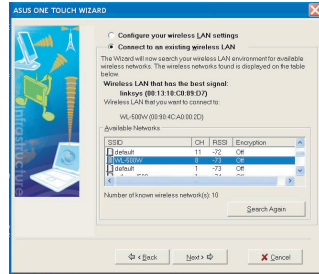
If you have installed ASUS wireless card together with its utilities and drives on your PC, click **Start -> All Programs -> ASUS Utility-> WLAN Card -> One Touch Wizard** to launch the One Touch Wizard utility.



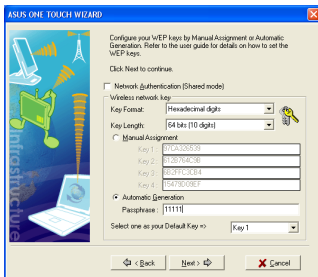
1) Select **Connect to an existing wireless LAN (Station)** radio button and click **Next** to continue.



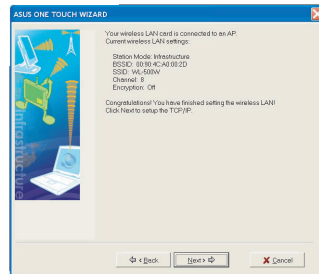
2) One Touch Wizard searches and displays the available APs in the **Available Networks** list. Select WL-500W and press **Next** to continue.



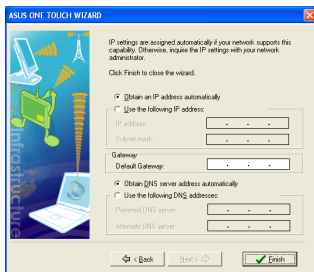
3) Set the authentication and encryption of your WLAN card the same with those at WL-500W. In the previous steps the **Key Length** is **64 bits**, **Passphrase** is **11111** Click **Next** to continue.



4) It takes several seconds for the wireless card to associate with WL-500W. Press **Next** to setup TCP/IP for your WLAN Card.



5) Setup the IP address of the WLAN Card according to your network condition. After the setup is complete, click **Finish** to exit the One Touch Wizard.

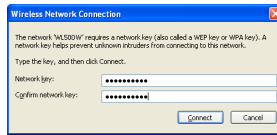
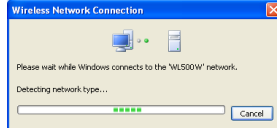
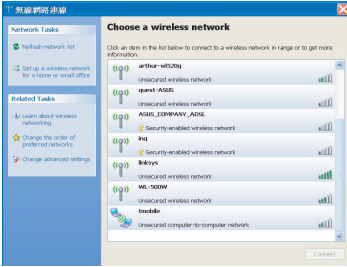




Configuring WLAN card with Windows® WZC service

If you use non-ASUS wireless card, you can set up the wireless connection with Windows® Wireless Zero Configuration (WZC) service.

- 1) Double-click the wireless network icon on the task bar to view available networks. Select your wireless router and click **Connect**.
- 2) Input the 10-digit keys you have set on the wireless router and click **Connect**. The connection is complete within several seconds.



7. Configuring advanced features

To view and adjust other settings of the wireless router, enter the Web configuration page of WL-500W. Click on items on the menu to open a submenu and follow the instructions to setup the router. Tips show up when you move your cursor over each item.



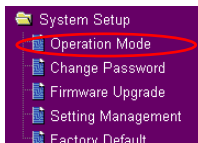


4. Wireless router features

This chapter provides setup examples of some frequently used router features. You can set up these features via your Web browser.

1) Choosing an appropriate operation mode

ASUS WL-500W Wireless Router supports three operation modes: home gateway, router, and access point. Click **System Setup** -> **Operation mode** to open the configuration page.



Home gateway mode is for home or SOHO users who want to connect to their ISPs for Internet services. In this operation mode, NAT, WAN connection, Internet firewall functions are supported.

Router mode is for office use where multiple routers and switches co-exist. You can set up routing policies in this mode; however, NAT function is disabled.

Access point mode works when you setup WL-500W as a wireless bridge. In this mode, all Ethernet ports on WL-500W (4 LAN ports and 1 WAN port) are recognized as LAN ports. WAN connection, NAT, and Internet firewall functions are disabled in access point mode.

Select a proper mode which complies to your network scenario and press **Apply** button, and then you can continue to set up the advanced features for your WL-500W.

System Setup - Operation Mode	
ASUS Wireless Router supports three operation modes to meet different requirements from different group of people. Please select the mode that match your situation.	
<input checked="" type="radio"/> Home Gateway	<p>In this mode, we suppose you use ASUS Wireless Router to connect to Internet through ADSL or Cable Modem. And, there are many people in your environment share the same IP to ISP.</p> <p>Explaining with technical terms, gateway mode is , NAT is enabled, WAN connection is allowed by using PPPoE, or DHCP client, or static IP. In addition, some features which are useful for home user, such as UPnP and DDNS, are supported.</p>
<input type="radio"/> Router	<p>In Router mode, we suppose you use ASUS Wireless Router to connect to LAN in your company. So, you can set up routing protocol to meet your requirement in office.</p> <p>Explaining with technical terms, router mode is, NAT is disabled, static routing protocol are allowed to set.</p>
<input type="radio"/> Access Point	<p>In Access Point mode, all 5 Ethernet ports and wireless devices are set to locate in the same local area network. Those WAN related functions are not supported here.</p> <p>Explaining with technical terms, access point mode is, NAT is disabled, one wan port and four lan ports of ASUS Wireless Router are bridged together.</p>
<input type="button" value="Apply"/>	