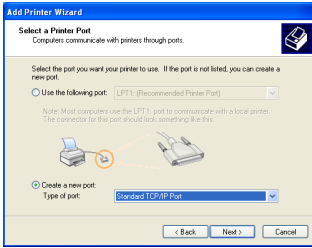
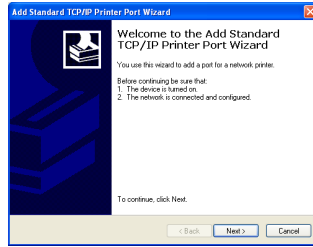




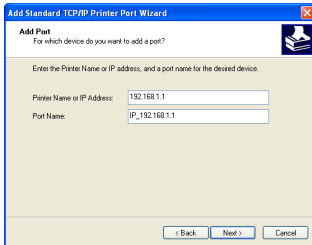
3. Select **Create a new port** and set Type of port to **Standard TCP/IP Port**, then click **Next**.



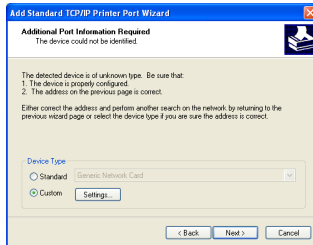
4. Click **Next** to setup TCP/IP port for accessing the network printer.



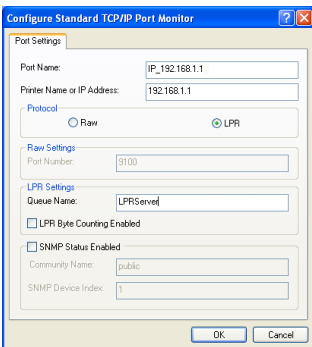
5. Input the IP address of WL-500W in the **Printer Name or IP Address** field and click **Next**.



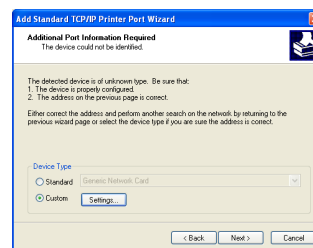
6. Select **Custom** and click **Settings**.



7. Set **Protocol** to **LPR** and type **LPRServer** in **Queue Name** field. Click **Next** to continue.

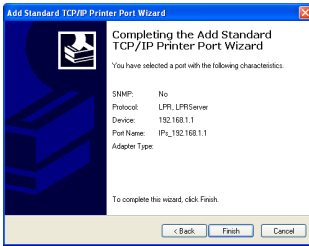


8. Press **Next** to finish standard TCP/IP port setting.

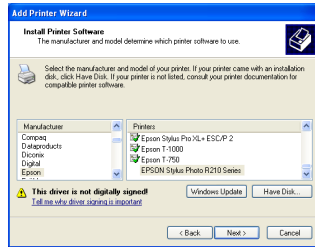




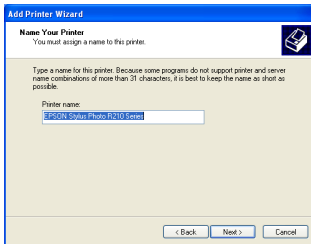
9. Press **Finish** to complete the settings and return to Add Printer Wizard.



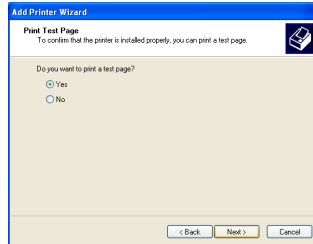
10. Install printer driver from the vendor-model list. If your printer is not in the list, click **Have Disk** to manually assign the location of driver.



11. Click **Next** to accept the default name for the printer.



12. Select **Yes** to print a test page. Click **Next** to print.



13. The installation is complete. Click **Finish** to quit the Add Printer Wizard.



Note: If you have already installed the printer locally on your computer, right click the printer icon and select **Property -> Port** tab to add a standard TCP/IP port. Click **Add Port** then select **Standard TCP/IP Port** and click **New Port** button. Refer to step 5-8 for setting procedures.



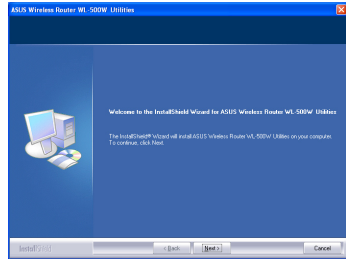
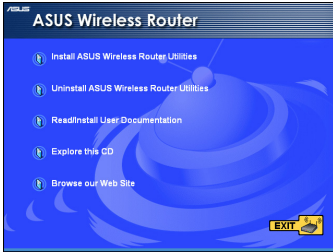
Note: If you use Windows® 98 or ME which does not support Standard TCP/IP port, you need to use Remote Port which is supported by WL-500W.



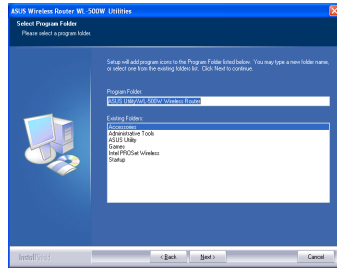
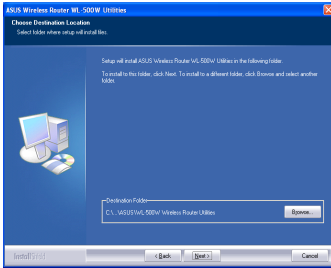
6. Setting up using ASUS utility

1) Utility Installation for WL-500W

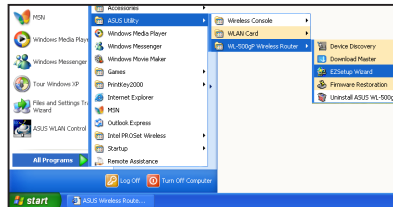
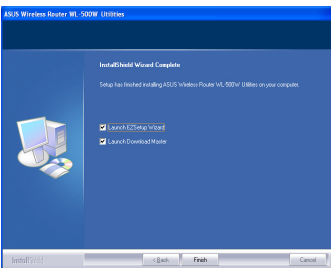
1. Click **Install ASUS Wireless Router Utilities** to run the setup installation program.
2. Click **Next** to continue.



3. Click **Next** to install the utility in the designated location.
4. Select a program folder and click **Next**.



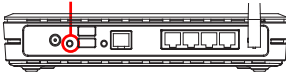
5. Press **Finish** to quit the installation program.
6. Open the **EZSetup Wizard**.



2) EZSetup

Wireless LAN setup will complete in two easy steps. First open the EZSetup utility form Start menu, then push the EZSetup button on the rear panel for 3 seconds.

- 1 Push **EZSetup** over 3 sec. and release.



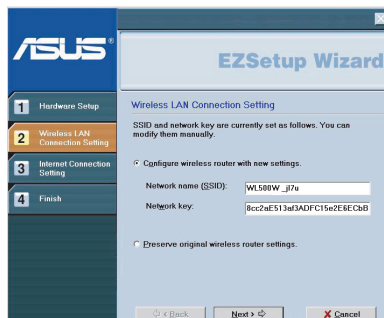
1) If the setup button is pushed without running the EZsetup wizard utility, the PWR indicator will flash and Internet connections will pause for a short period but will then return to normal operation without change.

2) To use EZSetup, we recommend using an ASUS wireless adapter such as WL-100W, WL-100gE, and WL-169gE.



Click the **EZSetup** button in the utility.

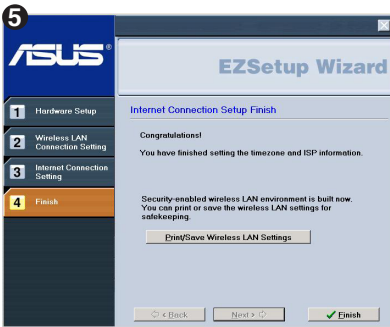
Note: Use EZSetup Wizard with one wireless client at a time. If the wireless client computer cannot discover the wireless router while in EZSetup mode, please shorten the distance between the client and the router.



Wireless settings, including network name and network keys, are generated automatically. You can modify these settings manually. Note if your wireless router is configured before, select **Preserve original wireless router settings** to use the current value. Click **Next** to continue.



If you need to configure the ISP settings for your wireless router, select **Configure ISP settings**, click **Next** and follow the instructions to complete the settings.



Setup is complete, press **Print/Save Wireless LAN Settings** button for future reference. Click **Finish** to exit the EZSetup utility.