

E8136

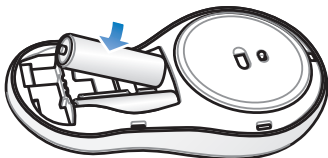


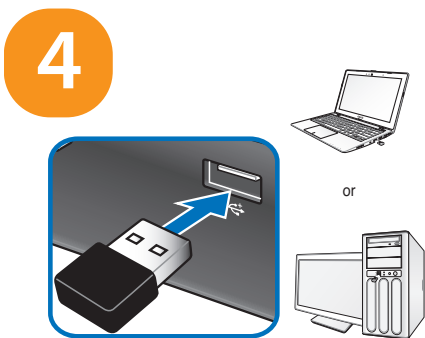
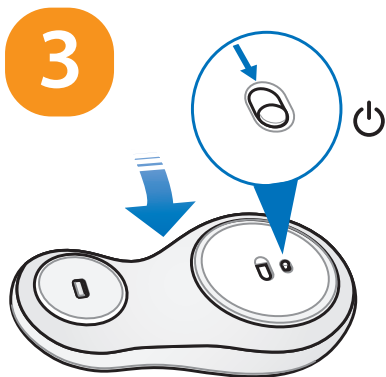
VivoMouse WT710/WT720  
quick start guide

1

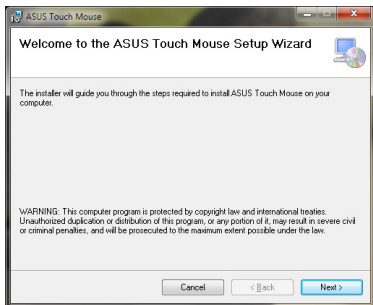


2





# 5



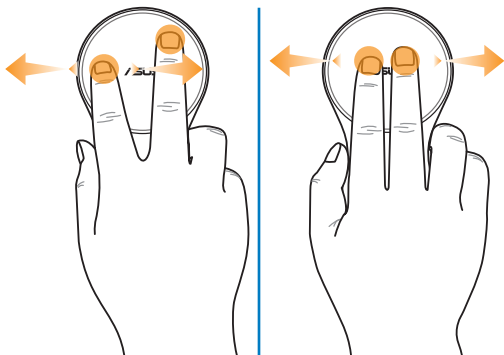
- E** **NOTE:** If the Setup Wizard does not appear, download it from <http://support.asus.com>.
- 
- C** **NOTE:** If the Setup Wizard does not appear, download it from <http://support.asus.com>.
- 
- T** **NOTE:** If the Setup Wizard does not appear, download it from <http://support.asus.com>.
- 
- F** **NOTE:** If the Setup Wizard does not appear, download it from <http://support.asus.com>.
- 
- G** **NOTE:** If the Setup Wizard does not appear, download it from <http://support.asus.com>.
-

- 
- I** **NOTE:** If the Setup Wizard does not appear, download it from <http://support.asus.com>.
- 
- J** **NOTE:** If the Setup Wizard does not appear, download it from <http://support.asus.com>.
- 
- K** **NOTE:** If the Setup Wizard does not appear, download it from <http://support.asus.com>.
- 
- R** **NOTE:** If the Setup Wizard does not appear, download it from <http://support.asus.com>.
- 
- HUG** **NOTE:** If the Setup Wizard does not appear, download it from <http://support.asus.com>.
- 
- PL** **NOTE:** If the Setup Wizard does not appear, download it from <http://support.asus.com>.
- 
- PG** **NOTE:** If the Setup Wizard does not appear, download it from <http://support.asus.com>.
- 
- RO** **NOTE:** If the Setup Wizard does not appear, download it from <http://support.asus.com>.
- 
- SK** **NOTE:** If the Setup Wizard does not appear, download it from <http://support.asus.com>.
- 
- SL** **NOTE:** If the Setup Wizard does not appear, download it from <http://support.asus.com>.
- 
- S** **NOTE:** If the Setup Wizard does not appear, download it from <http://support.asus.com>.
- 
- TH** **NOTE:** If the Setup Wizard does not appear, download it from <http://support.asus.com>.
- 
- TR** **NOTE:** If the Setup Wizard does not appear, download it from <http://support.asus.com>.
- 
- UA** **NOTE:** If the Setup Wizard does not appear, download it from <http://support.asus.com>.
-

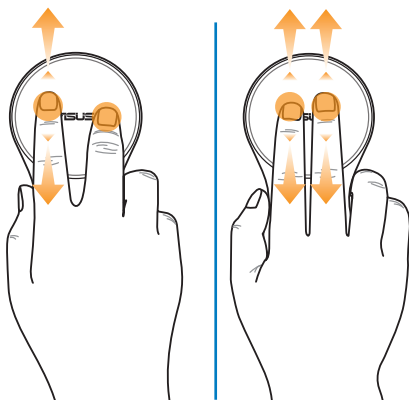
## VivoMouse Gestures



- |                                  |                                   |
|----------------------------------|-----------------------------------|
| <b>E</b> Controlling the cursor  | <b>C</b> Controlling the cursor   |
| <b>T</b> Controlling the cursor  | <b>F</b> Controlling the cursor   |
| <b>G</b> Controlling the cursor  | <b>I</b> Controlling the cursor   |
| <b>J</b> Controlling the cursor  | <b>K</b> Controlling the cursor   |
| <b>R</b> Controlling the cursor  | <b>HUG</b> Controlling the cursor |
| <b>PL</b> Controlling the cursor | <b>PG</b> Controlling the cursor  |
| <b>RO</b> Controlling the cursor | <b>SK</b> Controlling the cursor  |
| <b>SL</b> Controlling the cursor | <b>S</b> Controlling the cursor   |
| <b>TH</b> Controlling the cursor | <b>TR</b> Controlling the cursor  |
| <b>UA</b> Controlling the cursor |                                   |

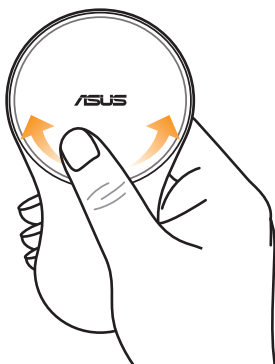


- E Scrolling/panning or sweep to left/right C Scrolling/panning or sweep to left/right  
 T Scrolling/panning or sweep to left/right F Scrolling/panning or sweep to left/right  
 G Scrolling/panning or sweep to left/right I Scrolling/panning or sweep to left/right  
 J Scrolling/panning or sweep to left/right K Scrolling/panning or sweep to left/right  
 R Scrolling/panning or sweep to left/right HUG Scrolling/panning or sweep to left/right  
 PL Scrolling/panning or sweep to left/right PG Scrolling/panning or sweep to left/right  
 RO Scrolling/panning or sweep to left/right SK Scrolling/panning or sweep to left/right  
 SL Scrolling/panning or sweep to left/right S Scrolling/panning or sweep to left/right  
 TH Scrolling/panning or sweep to left/right TR Scrolling/panning or sweep to left/right  
 UA scrolling/panning or sweep to left/right

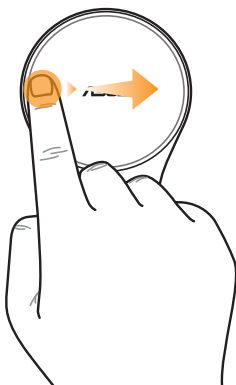


- E Scrolling/panning or sweep to up/down C  
 Scrolling/panning or sweep to up/down T Scrolling/  
 panning or sweep to up/down F Scrolling/panning or  
 sweep to up/down G Scrolling/panning or sweep to  
 up/down I Scrolling/panning or sweep to up/down  
 J Scrolling/panning or sweep to up/down K  
 Scrolling/panning or sweep to up/down R Scrolling/  
 panning or sweep to up/down HUG Scrolling/panning or  
 sweep to up/down PL Scrolling/panning or sweep to  
 up/down PG Scrolling/panning or sweep to up/down  
 RO Scrolling/panning or sweep to up/down SK  
 Scrolling/panning or sweep to up/down SL Scrolling/  
 panning or sweep to up/down S Scrolling/panning or  
 sweep to up/down TH Scrolling/panning or sweep to  
 up/down TR Scrolling/panning or sweep to up/down  
 UA Scrolling/panning or sweep to up/down

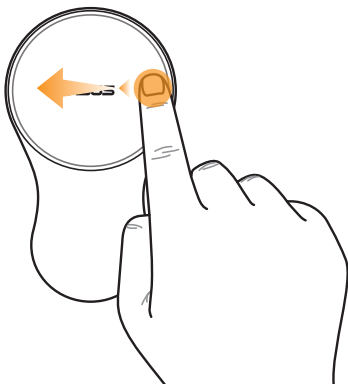




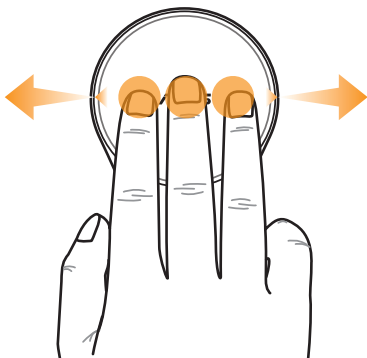
**E** Scrolling up/down **C** Scrolling up/down **T** Scrolling up/down  
**F** Scrolling up/down **G** Scrolling up/down  
**I** Scrolling up/down **J** Scrolling up/down  
**K** Scrolling up/down **R** Scrolling up/down **HUG** Scrolling up/down  
**PL** Scrolling up/down **PG** Scrolling up/down  
**RO** Scrolling up/down **SK** Scrolling up/down  
**SL** Scrolling up/down **S** Scrolling up/down **TH** Scrolling up/down  
**TR** Scrolling up/down **UA** Scrolling up/down



**E** Swipe from left edge to switch open apps **C**  
Swipe from left edge to switch open apps **T** Swipe  
from left edge to switch open apps **F** Swipe from left  
edge to switch open apps **G** Swipe from left edge to  
switch open apps **I** Swipe from left edge to switch  
open apps **J** Swipe from left edge to switch open  
apps **K** Swipe from left edge to switch open apps **R**  
Swipe from left edge to switch open apps **HUG** Swipe  
from left edge to switch open apps **PL** Swipe from left  
edge to switch open apps **PG** Swipe from left edge to  
switch open apps **RO** Swipe from left edge to switch  
open apps **SK** Swipe from left edge to switch open  
apps **SL** Swipe from left edge to switch open apps **S**  
Swipe from left edge to switch open apps **TH** Swipe  
from left edge to switch open apps **TR** Swipe from left  
edge to switch open apps **UA** Swipe from left edge to  
switch open apps

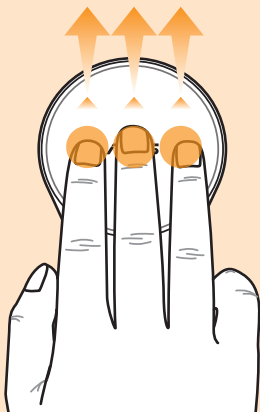


**E** Swipe from right edge to open Charms bar **C**  
Swipe from right edge to open Charms bar **T** Swipe  
from right edge to open Charms bar **F** Swipe from  
right edge to open Charms bar **G** Swipe from right  
edge to open Charms bar **I** Swipe from right edge to  
open Charms bar **J** Swipe from right edge to open  
Charms bar **K** Swipe from right edge to open Charms  
bar **R** Swipe from right edge to open Charms bar **HUG**  
Swipe from right edge to open Charms bar **PL** Swipe  
from right edge to open Charms bar **PG** Swipe from  
right edge to open Charms bar **RO** Swipe from right  
edge to open Charms bar **SK** Swipe from right edge to  
open Charms bar **SL** Swipe from right edge to open  
Charms bar **S** Swipe from right edge to open Charms  
bar **TH** Swipe from right edge to open Charms bar **TR**  
Swipe from right edge to open Charms bar **UA** Swipe  
from right edge to open Charms bar



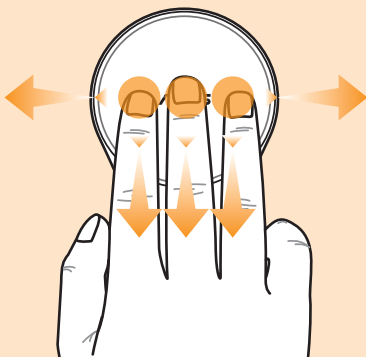
E Sweep left/right to go to previous/next page C  
 Sweep left/right to go to previous/next page T  
 Sweep left/right to go to previous/next page F Sweep  
 left/right to go to previous/next page, G Sweep  
 left/right to go to previous/next page I Sweep  
 left/right to go to previous/next page, J Sweep  
 left/right to go to previous/next page K Sweep  
 left/right to go to previous/next page R Sweep  
 left/right to go to previous/next page HUG Sweep  
 left/right to go to previous/next page PL Sweep  
 left/right to go to previous/next page PG Sweep left/  
 right to go to previous/next page RO Sweep left/right  
 to go to previous/next page SK Sweep left/right to  
 go to previous/next page SL Sweep left/right to  
 go to previous/next page S Sweep left/right to go  
 to previous/next page TH Sweep left/right to go to  
 previous/next page TR Sweep left/right to go to  
 previous/next page UA Sweep left/right to go to  
 previous/next page

## ASUS Mission Manager



**E** Launch ASUS Mission Manager **C** Launch ASUS Mission Manager  
**T** Launch ASUS Mission Manager  
**F** Launch ASUS Mission Manager **G** Launch ASUS Mission Manager  
**I** Launch ASUS Mission Manager  
**J** Launch ASUS Mission Manager **K** Launch ASUS Mission Manager  
**R** Launch ASUS Mission Manager  
**HUG** Launch ASUS Mission Manager **PL** Launch ASUS Mission Manager  
**PG** Launch ASUS Mission Manager  
**RO** Launch ASUS Mission Manager **SK** Launch ASUS Mission Manager  
**SL** Launch ASUS Mission Manager  
**S** Launch ASUS Mission Manager **TH** Launch ASUS Mission Manager  
**TR** Launch ASUS Mission Manager  
**UA** Launch ASUS Mission Manager

## ASUS Mission Manager



- E** Sweep left/right to switch between Desktop and Windows® 8 Start screen, sweep down to go back to previous screen/app
- C** Sweep left/right to switch between Desktop and Windows® 8 Start screen, sweep down to go back to previous screen/app
- T** Sweep left/right to switch between Desktop and Windows® 8 Start screen, sweep down to go back to previous screen/app
- F** Sweep left/right to switch between Desktop and Windows® 8 Start screen, sweep down to go back to previous screen/app
- G** Sweep left/right to switch between Desktop and Windows® 8 Start screen, sweep down to go back to previous screen/app
- I** Sweep left/right to switch between Desktop and Windows® 8 Start screen, sweep down to go back to previous screen/app
- J** Sweep left/right to switch between Desktop and Windows® 8 Start screen, sweep down to go back to previous screen/app
- K** Sweep left/right to switch between Desktop and Windows® 8 Start screen, sweep down to go back to previous screen/app

## ASUS Mission Manager

**R** Sweep left/right to switch between Desktop and Windows® 8 Start screen, sweep down to go back to previous screen/app

**HUG** Sweep left/right to switch between Desktop and Windows® 8 Start screen, sweep down to go back to previous screen/app

**PL** Sweep left/right to switch between Desktop and Windows® 8 Start screen, sweep down to go back to previous screen/app

**PG** Sweep left/right to switch between Desktop and Windows® 8 Start screen, sweep down to go back to previous screen/app

**RO** Sweep left/right to switch between Desktop and Windows® 8 Start screen, sweep down to go back to previous screen/app

**SK** Sweep left/right to switch between Desktop and Windows® 8 Start screen, sweep down to go back to previous screen/app

**SL** Sweep left/right to switch between Desktop and Windows® 8 Start screen, sweep down to go back to previous screen/app

**S** Sweep left/right to switch between Desktop and Windows® 8 Start screen, sweep down to go back to previous screen/app

**TH** Sweep left/right to switch between Desktop and Windows® 8 Start screen, sweep down to go back to previous screen/app

**TR** Sweep left/right to switch between Desktop and Windows® 8 Start screen, sweep down to go back to previous screen/app

**UA** Sweep left/right to switch between Desktop and Windows® 8 Start screen, sweep down to go back to previous screen/app

- E** **CAUTION!** The bundled batteries are not rechargeable.
- C** **CAUTION!** The bundled batteries are not rechargeable.
- T** **CAUTION!** The bundled batteries are not rechargeable.
- F** **CAUTION!** The bundled batteries are not rechargeable.
- G** **CAUTION!** The bundled batteries are not rechargeable.
- I** **CAUTION!** The bundled batteries are not rechargeable.
- J** **CAUTION!** The bundled batteries are not rechargeable.
- K** **CAUTION!** The bundled batteries are not rechargeable.
- R** **CAUTION!** The bundled batteries are not rechargeable.
- HUG** **CAUTION!** The bundled batteries are not rechargeable.
- PL** **CAUTION!** The bundled batteries are not rechargeable.
- PG** **CAUTION!** The bundled batteries are not rechargeable.
- RO** **CAUTION!** The bundled batteries are not rechargeable.
- SK** **CAUTION!** The bundled batteries are not rechargeable.
- SL** **CAUTION!** The bundled batteries are not rechargeable.
- S** **CAUTION!** The bundled batteries are not rechargeable.
- TH** **CAUTION!** The bundled batteries are not rechargeable.
- TR** **CAUTION!** The bundled batteries are not rechargeable.
- UA** **CAUTION!** The bundled batteries are not rechargeable.



E8348

VivoMouse WT710/WT720  
important notices

**ASUS**<sup>®</sup>

E8348

First Edition

May 2013

**Copyright © 2013 ASUSTeK COMPUTER INC. All Rights Reserved.**

No part of this manual, including the products and software described in it, may be reproduced, transmitted, transcribed, stored in a retrieval system, or translated into any language in any form or by any means, except documentation kept by the purchaser for backup purposes, without the express written permission of ASUSTeK COMPUTER INC. ("ASUS").

ASUS provides this manual "as is" without warranty of any kind, either express or implied, including but not limited to the implied warranties or conditions of merchantability or fitness for a particular purpose. In no event shall ASUS, its directors, officers, employees, or agents be liable for any indirect, special, incidental, or consequential damages (including damages for loss of profits, loss of business, loss of use or data, interruption of business and the like), even if ASUS has been advised of the possibility of such damages arising from any defect or error in this manual or product.

Specifications and information contained in this manual are furnished for informational use only, and are subject to change at any time without notice, and should not be construed as a commitment by ASUS. ASUS assumes no responsibility or liability for any errors or inaccuracies that may appear in this manual, including the products and software described in it.

Product warranty or service will not be extended if: (1) the product is repaired, modified or altered, unless such repair, modification or alteration is authorized in writing by ASUS; or (2) the serial number of the product is defaced or missing.

Products and corporate names appearing in this manual may or may not be registered trademarks or copyrights of their respective companies, and are used only for identification or explanation and to the owners' benefit, without intent to infringe.

## Notices

### Federal Communications Commission Statement

This equipment has been tested and found to comply with the limits for a Class B digital device, pursuant to Part 15 of the FCC Rules. These limits are designed to provide reasonable protection against harmful interference in a residential installation. This equipment generates, uses and can radiate radio frequency energy and, if not installed and used in accordance with manufacturer's instructions, may cause harmful interference to radio communications. However, there is no guarantee that interference will not occur in a particular installation. If this equipment does cause harmful interference to radio or television reception, which can be determined by turning the equipment off and on, the user is encouraged to try to correct the interference by one or more of the following measures:

- Reorient or relocate the receiving antenna.
- Increase the separation between the equipment and receiver.
- Connect the equipment to an outlet on a circuit different from that to which the receiver is connected.
- Consult the dealer or an experienced radio/TV technician for help.

---

**CAUTION!** Any changes or modifications not expressly approved by the grantee of this device could void the user's authority to operate the equipment.

---

### Labeling requirements

This device complies with Part 15 of the FCC Rules. Operation is subject to the following two conditions: (1) this device may not cause harmful interference, and (2) this device must accept any interference received, including interference that may cause undesired operation.



China RoHS EFUP  
Labelling - 10 Years

有毒有害物质或元素的名称及含量说明标示：

部件名称	有害物质或元素					
	铅 (Pb)	汞 (Hg)	镉 (Cd)	六价 铬 (Cr (VI))	多溴 联苯 (PBB)	多溴二 苯醚 (PBDE)
印刷电路板及其电子组件	x	○	○	○	○	○
外壳	x	○	○	○	○	○
外部信号连接头及线材	x	○	○	○	○	○
其它	x	○	○	○	○	○

○：表示该有毒有害物质在该部件所有均质材料中的含量均在SJ/T 11363-2006 标准规定的限量要求以下。

x：表示该有毒有害物质至少在该部件的某一均质材料中的含量超出SJ/T 11363-2006 标准规定的限量要求，然该部件仍符合欧盟指令2011/65/EU 的规范。

备注：此产品所标示之环保使用期限，系指在一般正常使用状况下。

## Canada, Industry Canada (IC) Notices

This Class B digital apparatus complies with Canadian ICES-003 and RSS-210.

Operation is subject to the following two conditions: (1) this device may not cause interference, and (2) this device must accept any interference, including interference that may cause undesired operation of the device.

## Canada, avis d'Industrie Canada (IC)

Cet appareil numérique de classe B est conforme aux normes canadiennes ICES-003 et RSS-210.

Son fonctionnement est soumis aux deux conditions suivantes: (1) cet appareil ne doit pas causer d'interférence et (2) cet appareil doit accepter toute interférence, notamment les interférences qui peuvent affecter son fonctionnement.

## Limitation of Liability

Circumstances may arise where because of a default on ASUS' part or other liability, you are entitled to recover damages from ASUS. In each such instance, regardless of the basis on which you are entitled to claim damages from ASUS, ASUS is liable for no more than damages for bodily injury (including death) and damage to real property and tangible personal property; or any other actual and direct damages resulted from omission or failure of performing legal duties under this Warranty Statement, up to the listed contract price of each product.

ASUS will only be responsible for or indemnify you for loss, damages or claims based in contract, tort or infringement under this Warranty Statement.

This limit also applies to ASUS' suppliers and its reseller. It is the maximum for which ASUS, its suppliers, and your reseller are collectively responsible.

UNDER NO CIRCUMSTANCES IS ASUS LIABLE FOR ANY OF THE FOLLOWING: (1) THIRD-PARTY CLAIMS AGAINST YOU FOR DAMAGES; (2) LOSS OF, OR DAMAGE TO, YOUR RECORDS OR DATA; OR (3) SPECIAL, INCIDENTAL, OR INDIRECT DAMAGES OR FOR ANY ECONOMIC CONSEQUENTIAL DAMAGES (INCLUDING LOST PROFITS OR SAVINGS), EVEN IF ASUS, ITS SUPPLIERS OR YOUR RESELLER IS INFORMED OF THEIR POSSIBILITY.

## CE Mark Warning



### CE marking for devices without wireless LAN/ Bluetooth

The shipped version of this device complies with the requirements of the EMC directives 2004/108/EC "Electromagnetic compatibility" and 2006/95/EC "Low voltage directive".

## Wireless Operation Channel for Different Domains

The wireless operation channel of this mouse is universal worldwide: 2.402-2.480 GHz, Ch02 to Ch80.

### Proper disposal



Risk of explosion if battery is replaced by an incorrect type. Dispose of used batteries according to the instructions.



DO NOT throw the battery in municipal waste. The symbol of the crossed out wheeled bin indicates that the battery should not be placed in municipal waste.



DO NOT throw the VivoMouse in municipal waste. This product has been designed to enable proper reuse of parts and recycling. The symbol of the crossed out wheeled bin indicates that the product (electrical, electronic equipment and mercury-containing button cell battery) should not be placed in municipal waste. Check local regulations for disposal of electronic products.



DO NOT throw the VivoMouse in fire. DO NOT short circuit the contacts. DO NOT disassemble the VivoMouse.

### REACH

Complying with the REACH (Registration, Evaluation, Authorisation, and Restriction of Chemicals) regulatory framework, we published the chemical substances in our products at ASUS REACH website at <http://csr.asus.com/english/REACH.htm>.

### ASUS Recycling/Takeback Services

ASUS recycling and takeback programs come from our commitment to the highest standards for protecting our environment. We believe in providing solutions for you to be able to responsibly recycle our products, batteries, other components as well as the packaging materials. Please go to <http://csr.asus.com/english/Takeback.htm> for detailed recycling information in different regions.

## VCCI: Japan Compliance Statement

### VCCI Class B Statement

#### 警告 VCCI準拠クラスB機器(日本)

この装置は、情報処理装置等電波障害自主規制協議会(VCCI)の基準に基づくクラスB情報技術装置です。この装置は、家庭環境で使用することを目的としていますが、この装置がラジオやテレビジョン受信機に近接して使用されると、受信障害を引き起こすことがあります。取扱説明書に従って正しい取り扱いをして下さい。

## KC: Korea Warning Statement

B급 기기 (가정용 방송통신기자재)  
이 기기는 가정용(B급) 전자파적합기로서 주로 가정에서 사용하는 것을 목적으로 하며, 모든 지역에서 사용할 수 있습니다

\*당해 무선설비는 전파혼신 가능성이 있으므로 인명안전과 관련된 서비스는 할 수 없습니다

대한민국 규정 및 준수  
방통 위고시에 따른 고지사항  
해당 무선설비는 운용 중 전파혼신 가능성이 있음  
이 기기는 인명안전과 관련된 서비스에 사용할 수 없습니다

## BSMI: Taiwan Wireless Statement

### 無線設備的警告聲明

經型式認證合格之低功率射頻電機，非經許可，公司、商號或使用者均不得擅自變更頻率、加大功率或變更原設計之特性及功能。低功率射頻電機之使用不得影響飛航安全及干擾合法通信；經發現有干擾現象時，應立即停用，並改善至無干擾時方得繼續使用。前項合法通信，指依電信法規定作業之無線電通信。低功率射頻電機須忍受合法通信或工業、科學及醫療用電波輻射性電機設備之干擾。



## **ASUS contact information**

### **ASUSTeK COMPUTER INC.**

Address 15 Li-Te Road, Peitou, Taipei, Taiwan 11259  
Telephone +886-2-2894-3447  
Fax +886-2-2890-7798  
E-mail info@asus.com.tw  
Web site www.asus.com.tw

#### **Technical Support**

Telephone +86-21-38429911  
Online support support.asus.com

### **ASUS COMPUTER INTERNATIONAL (America)**

Address 800 Corporate Way, Fremont, CA 94539, USA  
Telephone +1-510-739-3777  
Fax +1-510-608-4555  
Web site usa.asus.com

#### **Technical Support**

Telephone +1-812-282-2787  
Support fax +1-812-284-0883  
Online support support.asus.com

### **ASUS COMPUTER GmbH (Germany and Austria)**

Address Harkort Str. 21-23, D-40880 Ratingen, Germany  
Fax +49-2102-959911  
Web site www.asus.de  
Online contact www.asus.de/sales

#### **Technical Support**

Telephone +49-1805-010923\*  
Support Fax +49-2102-9599-11  
Online support support.asus.com

\* EUR 0.14/minute from a German fixed landline; EUR 0.42/minute from a mobile phone.

一年质保

ASUS®

全国联保

### 华硕产品质量保证卡

尊敬的华硕产品用户：

首先非常感谢您选用华硕公司产品，让我们有机会向您提供优质的服务。为了使我们的服务让您更满意，在购买后请您认真阅读此说明并妥善保存此质量保证卡。


保修说明注意事项：

- 一、 请将此质量保证卡下方的用户资料填写完整，并由最终直接经销商加盖印章，如果没有加盖印章，**请找原购买处补盖以保障您的权益。请务必保留购买发票或复印件，否则华硕公司将以产品的出厂日期为参照进行保修。**
- 二、 华硕公司对在中国大陆地区（不包括港澳台地区）发售的、经合法渠道销售给消费者的华硕鼠标产品实行**一年的免费保修服务**。
- 三、 华硕公司对在中国大陆地区（不包括港澳台地区）发售的、经合法渠道销售给消费者的华硕鼠标产品**实行全国联保服务**。注：
  - A. 消费者必须出具正规购买发票或国家认可的有效凭证方可享受全国联保。
  - B. 如消费者无法出具正规购买发票或国家认可的有效凭证，则需送修至原购买经销商处享受保修服务。
- 四、 若经本公司判断属下列因素，则不属于免费保修服务的范围，本公司将有权收取维修费用：
  - A. 超过华硕提供的质保有效期的鼠标产品。
  - B. 因遇不可抗力外力（如：水灾、火灾、地震、雷击、台风等）或人为之操作使用不慎造成之损害。
  - C. 未按产品说明书条例的要求使用、维护、保管而造成的损坏。
  - D. 用户擅自或请第三方人员自行检修、改装、变更组件、修改线路等。
  - E. 因用户自行安装软件及设置不当所造成之使用问题及故障。
  - F. 本公司产品序列号标贴撕毁或无法辨认，涂改保修服务卡或与实际产品不符。
  - G. 其他不正常使用所造成之问题及故障。

五、 技术支持及维修服务：

1. 我们建议您先登录华硕官方会员网站 (<http://vip.asus.com>)，对您购买的华硕产品进行在线注册，注册后您将定期得到我们发送的产品信息以及技术资料；
2. 如果您在使用华硕产品的过程中遇到问题，您可以首先查阅用户手册，寻找答案；
3. 您亦可访问华硕中文网站技术支持页面 (<http://support.asus.com.cn>) 查询到相应的技术支持信息与常见问题排除；
4. 登录我们的**在线技术支持服务区进行咨询** (<http://www.asus.com.cn/email>)；
5. 也欢迎您拨打华硕海星服务 7x24 小时免费技术支持专线 800-820-6655，由我们的在线工程师为您提供服务；（注：未开通 800 的地区或使用移动电话，请拨打技术支持电话 020-28047506）
6. 如果您使用的华硕产品由于硬件故障，需要维修服务，您可以直接联系您的经销商，通过经销商及遍布全国的华硕展示服务中心进行后续相应的检修服务。
7. 无论通过何种方式寻求技术服务，请您务必明确告知您使用的产品型号、BIOS 版本、搭配之硬件、详细的故障现象等，以利于华硕工程师能帮助您更加准确快速地判断出故障的原因。

用户填写资料

用户名称		购买日期	
联系人		联系电话	
联系地址			
经销商名称		产品种类	
产品型号		产品序号	
	经销商印章		

请用剪刀沿虚线剪下

[Put CE/FCC here]

