

ASUS Phone

# IN SEARCH OF INCREDIBLE

User Guide



E11806

**ASUS**

First Edition/ July 2016

Model: ASUS\_Z012DC (ZE552KL)

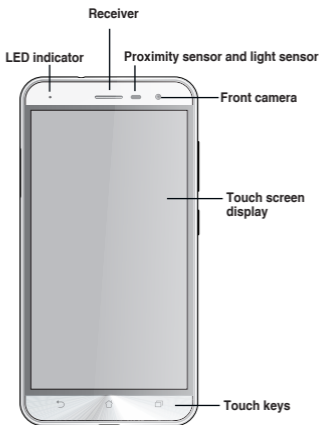
Before you start, ensure that you have read all the safety information and operating instructions in this **User Guide** to prevent injury or damage to your device.

---

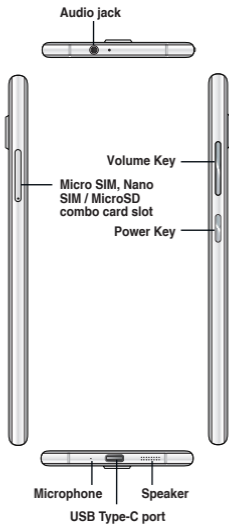
**NOTE:** For the latest updates and more detailed information, please visit [www.asus.com](http://www.asus.com).

---

## Front features



## Side features

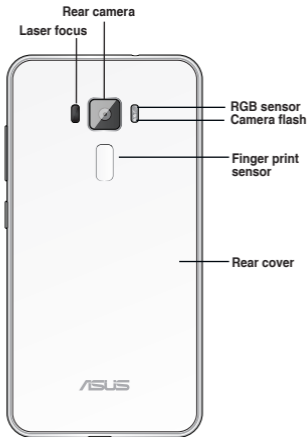


---

**NOTE:** The USB Type-C port supports USB2.0 transfer rate.

---

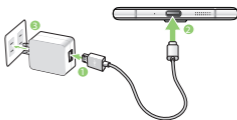
## Rear features



# Charging your ASUS Phone

## To charge your ASUS Phone:

1. Connect the USB connector into the power adapter's USB port.
2. Connect the other end of the USB Type C cable to your ASUS Phone.
3. Plug the power adapter into a wall socket.



---

### IMPORTANT!

- When using your ASUS Phone while it is plugged to a power outlet, the grounded power outlet must be near to the unit and easily accessible.
- When charging your ASUS Phone through your computer, ensure that you plug the USB Type C cable to your computer's USB 2.0 / USB 3.0 port.
- Avoid charging your ASUS Phone in an environment with ambient temperature of above 35°C (95°F).

---

### NOTES:

- Use only the power adapter that came with your device. Using a different power adapter may damage your device.
  - Using the bundled power adapter and ASUS Phone signal cable to connect your ASUS Phone to a power outlet is the best way to charge your ASUS Phone.
  - The input voltage range between the wall outlet and this adapter is AC 100V - 240V. The output voltage of the Type C cable is +5V=2A, 10W.
-

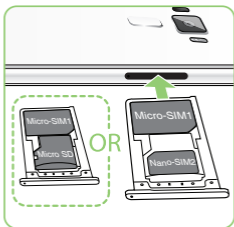
## Installing a Micro SIM / Nano SIM / MicroSD card

To install a Micro SIM / Nano SIM / MicroSD card:

1. Push a pin into the hole on the Micro SIM / Nano SIM / MicroSD card tray to eject it.



2. Insert the Micro SIM / Nano SIM or MicroSD card(s) into the card slot(s).



---

**IMPORTANT:** You can only use the Nano SIM card or the MicroSD card at a time.

---

3. Push the tray to close it.



---

#### NOTES:

- The Micro SIM / Nano SIM card slots support LTE, WCDMA and GSM/EDGE network bands.
- The MicroSD card slot supports MicroSD and MicroSDHC card formats.

---

**IMPORTANT:** Both Micro SIM and Nano SIM card slots support 3G WCDMA/ 4G LTE network band. But only one SIM card can connect to 4G LTE service at a time.

---

#### CAUTION!

- Do not use sharp tools or solvent on your device to avoid scratches on it.
  - Use only a standard Micro SIM card on your ASUS Phone. A Nano to Micro SIM adapter or a trimmed SIM card may not properly fit into and may not be detected by your ASUS Phone.
  - **DO NOT install an empty Nano to Micro SIM adapter into the Micro SIM card slot to avoid irreversible damage.**
-

## Federal Communications Commission Statement

This device complies with part 15 of the FCC Rules. Operation is subject to the following two conditions: (1) This device may not cause harmful interference, and (2) this device must accept any interference received, including interference that may cause undesired operation.

Changes or modifications not expressly approved by the party responsible for compliance could void the user's authority to operate the equipment.

This equipment has been tested and found to comply with the limits for a Class B digital device, pursuant to part 15 of the FCC Rules. These limits are designed to provide reasonable protection against harmful interference in a residential installation. This equipment generates, uses and can radiate radio frequency energy and, if not installed and used in accordance with the instructions, may cause harmful interference to radio communications. However, there is no guarantee that interference will not occur in a particular installation. If this equipment does cause harmful interference to radio or television reception, which can be determined by turning the equipment off and on, the user is encouraged to try to correct the interference by one or more of the following measures:

- Reorient or relocate the receiving antenna.
- Increase the separation between the equipment and receiver.
- Connect the equipment into an outlet on a circuit different from that to which the receiver is connected.
- Consult the dealer or an experienced radio/TV technician for help.

The antenna(s) used for this transmitter must not be co-located or operating in conjunction with any other antenna or transmitter.



The country code selection is for non-US model only and is not available to all US model. Per FCC regulation, all WiFi product marketed in US must fixed to US operation channels only.

## Canada, Industry Canada (IC) Notices

This device complies with Industry Canada's licence-exempt RSS standard(s). Operation is subject to the following two conditions:

- (1) This device may not cause interference; and
- (2) This device must accept any interference, including interference that may cause undesired operation of the device.

Le présent appareil est conforme aux CNR d'Industrie Canada applicables aux appareils radio exempts de licence. L'exploitation est autorisée aux deux conditions suivantes:

- (1) l'appareil ne doit pas produire de brouillage, et
- (2) l'utilisateur de l'appareil doit accepter tout brouillage radioélectrique subi, même si le brouillage est susceptible d'en compromettre le fonctionnement.

### **Radio Frequency (RF) Exposure Information**

The radiated output power of the Wireless Device is below the Industry Canada (IC) radio frequency exposure limits. The Wireless Device should be

used in such a manner such that the potential for human contact during normal operation is minimized. This device has been evaluated for and shown compliant with the IC Specific Absorption Rate ("SAR") limits when installed in specific host products operated in portable exposure conditions.

Canada's REL (Radio Equipment List) can be found at the following web address: <http://www.ic.gc.ca/app/sitt/reltel/srch/nwRdSrch.do?lang=eng>

Additional Canadian information on RF exposure also can be found at the following web address: <http://www.ic.gc.ca/eic/site/smt-gst.nsf/eng/sf08792.html>

### **Informations concernant l'exposition aux fréquences radio (RF)**

La puissance de sortie émise par cet appareil sans fil est inférieure à la limite d'exposition aux fréquences radio d'Industrie Canada (IC). Utilisez l'appareil sans fil de façon à minimiser les contacts humains lors du fonctionnement normal.

Ce périphérique a été évalué et démontré conforme aux limites SAR (Specific Absorption Rate – Taux d'absorption spécifique) d'IC lorsqu'il est installé dans des produits hôtes particuliers qui fonctionnent dans des conditions d'exposition à des appareils portables.

Ce périphérique est homologué pour l'utilisation au Canada. Pour consulter l'entrée correspondant à l'appareil dans la liste d'équipement radio (REL - Radio Equipment List) d'Industrie Canada rendez-vous sur:

<http://www.ic.gc.ca/app/sitt/reltel/srch/nwRdSrch.do?lang=eng>

Pour des informations supplémentaires concernant l'exposition aux RF au Canada rendez-vous sur:

<http://www.ic.gc.ca/eic/site/smt-gst.nsf/eng/sf08792.html>

## **Caution**

- (i) the device for operation in the band 5150-5250 MHz is only for indoor use to reduce the potential for harmful interference to co-channel mobile satellite systems;

## **Avertissement**

Le guide d'utilisation des dispositifs pour réseaux locaux doit inclure des instructions précises sur les restrictions susmentionnées, notamment:

- (i) les dispositifs fonctionnant dans la bande 5150-5250 MHz sont réservés uniquement pour une utilisation à l'intérieur afin de réduire les risques de brouillage préjudiciable aux systèmes de satellites mobiles utilisant les mêmes canaux;

## **CAN ICES-3(B)/NMB-3(B)**

This Class B digital apparatus complies with Canadian ICES-003.

Cet appareil numérique de la classe B est conforme à la norme NMB-003 du Canada.

This device and its antenna(s) must not be co-located or operating in conjunction with any other antenna or transmitter, except tested built-in radios.

The County Code Selection feature is disabled for products marketed in the US/ Canada.

Cet appareil et son antenne ne doivent pas être situés ou fonctionner en conjonction avec une autre antenne ou un autre émetteur, exception faites des radios intégrées qui ont été testées.

La fonction de sélection de l'indicatif du pays est désactivée pour les produits commercialisés aux États-Unis et au Canada.

The IC ID for this device is 3568A-Z012DC.

L'identifiant Industrie Canada de cet appareil est: 3568A-Z012DC.

---

**CAUTION:** High-power radars are allocated as primary users (i.e. priority users) of the bands 5250-5350 MHz and 5650-5850 MHz and that these radars could cause interference and/or damage to LE-LAN devices.

---

---

**AVERTISSEMENT:** Les utilisateurs de radars de haute puissance sont désignés utilisateurs principaux (c.-à-d., qu'ils ont la priorité) pour les bandes 5250-5350 MHz et 5650-5850 MHz et que ces radars pourraient causer du brouillage et/ou des dommages aux dispositifs LAN-EL.

---

## RF Exposure Information (SAR)

This device has been tested and meets applicable limits for Radio Frequency (RF) exposure.

Specific Absorption Rate (SAR) refers to the rate at which the body absorbs RF energy. SAR limits are 1.6 Watts per kilogram (over a volume containing a mass of 1 gram of tissue) in countries that follow the United States FCC limit and 2.0 W/kg (averaged over 10 grams of tissue) in countries that follow the Council of the European Union limit. Tests for SAR are conducted using standard operating positions with the device transmitting at its highest certified power level in all tested frequency bands.

To reduce exposure to RF energy, use a hands-free accessory or other similar option to keep this device away from your head and body. Carry this device at least 15 mm away from your body to ensure exposure levels remain at or below the as-tested levels. Choose the belt clips, holsters, or other similar body-worn accessories which do not contain metallic components to support operation in this manner. Cases with metal parts may change the RF performance of the device, including its compliance with RF exposure guidelines, in a manner that has not been tested or certified, and use such accessories should be avoided.

The highest FCC SAR values for the device are as follows:

- 1.17 W/Kg (Head)
- 0.59 W/Kg (Body-worn)

The FCC has granted an Equipment Authorization for this device with all reported SAR levels evaluated as in compliance with the FCC RF exposure guidelines. SAR information on this device is on file with the FCC and can be found under the Display Grant section of [www.fcc.gov/oet/ea/fccid](http://www.fcc.gov/oet/ea/fccid) after searching on FCC ID: MSQZ012DC.

## CE RF Exposure Compliance

This device meets the EU requirements (1999/519/EC) on the limitation of exposure of the general public to electromagnetic fields by way of health protection.

For body-worn operation, this device has been tested and meets the ICNIRP guidelines and the European Standard EN 62209-2, for use with dedicated accessories. SAR is measured with this device at a separation of 0.5 cm to the body, while transmitting at the highest certified output power level in all frequency bands of this device. Use of other accessories which contain metals may not ensure compliance with ICNIRP exposure guidelines.

## CE Mark Warning



## CE marking for devices with wireless LAN/ Bluetooth

This equipment complies with the requirements of Directive 1999/5/EC of the European Parliament and Commission from 9 March, 1999 governing

Radio and Telecommunications Equipment and mutual recognition of conformity. The highest CE SAR values for the device are as follows:

- 0.493 W/Kg (Head)
- 1.460 W/Kg (Body)

## Laser safety information

CLASS 1 LASER PRODUCT

## This equipment may be operated in:

IT	RU	FR	TR	CZ	PO	SK	ES
PT	HU	DE	RO	WB	SI	UA	KZ

---

NOTE: This device is restricted to indoor use only when operating in the 5150 to 5350 MHz frequency range.

---

## Using GPS (Global Positioning System) on your ASUS Phone

To use the GPS positioning feature on your ASUS Phone:

- Ensure that your device is connected to the Internet before using Google Map or any GPS-enabled apps.
- For first-time use of a GPS-enabled app on your device, ensure that you are outdoors to get the best positioning data.
- When using a GPS-enabled app on your device inside a vehicle, the metallic component of the car window and other electronic devices might affect the GPS performance.

## Prevention of Hearing Loss

To prevent possible hearing damage, do not listen at high volume levels for long periods.



A pleine puissance, l'écoute prolongée du baladeur peut endommager l'oreille de l'utilisateur.

For France, headphones/earphones for this device are compliant with the sound pressure level requirement laid down in the applicable EN 50332-1:2013 and/or EN50332-2:2013 standard required by French Article L.5232-1.

## Safety information

### ASUS Phone care

- Use your ASUS Phone in an environment with ambient temperatures between 0 °C (32 °F) and 35 °C (95 °F).

### The battery

---

**WARNING:** Disassembling the battery by yourself will void its warranty and may cause serious harm.

---

Your ASUS Phone is equipped with a high performance non-detachable Li-polymer battery. Observe the maintenance guidelines for a longer battery life.



- Do not remove the non-detachable Li-polymer battery as this will void the warranty.
- Avoid charging in extremely high or low temperature. The battery performs optimally in an ambient temperature of +5 °C to +35 °C.
- Do not remove and replace the battery with a non-approved battery.
- Use only ASUS battery. Using a different battery may cause physical harm/injury and may damage your device.
- Do not remove and soak the battery in water or any other liquid.
- Never try to open the battery as it contains substances that might be harmful if swallowed or allowed to come into contact with unprotected skin.
- Do not remove and short-circuit the battery, as it may overheat and cause a fire. Keep it away from jewelry or metal objects.
- Do not remove and dispose of the battery in fire. It could explode and release harmful substances into the environment.
- Do not remove and dispose of the battery with your regular household waste. Take it to a hazardous material collection point.
- Do not touch the battery terminals.
- To avoid fire or burns, do not disassemble, bend, crush, or puncture the battery.

---

**NOTES:**

- Risk of explosion if battery is replaced by an incorrect type.
  - Dispose of used battery according to the instructions.
- 

## The charger

- Use only the charger supplied with your ASUS Phone.

## Caution

Your ASUS Phone is a high quality piece of equipment. Before operating, read all instructions and cautionary markings on the (1) AC Adapter.

- Do not use the ASUS Phone in an extreme environment where high temperature or high humidity exists. The ASUS Phone performs optimally in an ambient temperature between 0 °C (32 °F) and 35 °C (95 °F).
- Do not disassemble the ASUS Phone or its accessories. If service or repair is required, return the unit to an authorized service center. If the unit is disassembled, a risk of electric shock or fire may result.
- Do not short-circuit the battery terminals with metal items.

## Operator access with a tool

If a TOOL is necessary to gain access to an OPERATOR ACCESS AREA, either all other compartments within that area containing a hazard shall be inaccessible to the OPERATOR by the use of the same TOOL, or such compartments shall be marked to discourage OPERATOR access.

## ASUS Recycling/Takeback Services

ASUS recycling and takeback programs come from our commitment to the highest standards for protecting our environment. We believe in providing solutions for you to be able to responsibly recycle our products, batteries, other components as well as the packaging materials. Please go to <http://csr.asus.com/english/Takeback.htm> for detailed recycling information in different regions.

## Regional notice for Singapore

This ASUS Phone complies with IDA Standards.

Complies with  
IDA Standards  
DB103778

## Proper disposal



**Risk of explosion if battery is replaced by an incorrect type. Dispose of used batteries according to the instructions.**



DO NOT throw the battery in municipal waste. The symbol of the crossed out wheeled bin indicates that the battery should not be placed in municipal waste.



DO NOT throw this product in municipal waste. This product has been designed to enable proper reuse of parts and recycling. The symbol of the crossed out wheeled bin indicates that the product (electrical, electronic equipment and mercury-containing button cell battery) should not be placed in municipal waste. Check local regulations for disposal of electronic products.



DO NOT throw this product in fire. DO NOT short circuit the contacts. DO NOT disassemble this product.

---

**WARNING!** This product may contain chemicals known to the State of California to cause cancer, birth defects, or other reproductive harm. Wash hands after handling.

---

EU Declaration of Conformity



We, the undersigned,

Manufacturer:	ASUSTEK COMPUTER INC.
Address:	4F, No. 100, Li-Tsuei Rd., Peitou, Taipei 112, Taiwan
Authorized representative in Europe:	ASUS COMPUTER GmbH
Address, City:	HARKORT STR. 27-29, 40880 RATINGSEN
Country:	GERMANY

declare the following apparatus:

Product name :	ASUS Phone
Model name :	ASUS_Z012D/ASUS_Z012DA/ASUS_Z012DB

The object of the declaration described above is in conformity with the relevant Union harmonization legislation:

**EMC – Directive 2004/108/EC (until April 19th, 2016) and Directive 2014/53/EU (from April 20th, 2016)**

<input checked="" type="checkbox"/> EN 55022:2011+AC:2011 EN 61000-3-2:2014	<input checked="" type="checkbox"/> EN 55024:2010 EN 61000-3-3:2013
--	--

**RATTE – Directive 1999/5/EC**

<input checked="" type="checkbox"/> EN 300 328 V1.8 1(2013-02)	<input checked="" type="checkbox"/> EN 62311:2008
<input checked="" type="checkbox"/> EN 300 640-1 V1.4 1(2010-08)	<input checked="" type="checkbox"/> EN 62209-1:2008
<input checked="" type="checkbox"/> EN 300 640-2 V1.4 1(2010-08)	<input checked="" type="checkbox"/> EN 62209-2:2010
<input checked="" type="checkbox"/> EN 301 811 V8.0 2(2003-03)	<input checked="" type="checkbox"/> EN 50368:2013+AC:2014
<input checked="" type="checkbox"/> EN 301 808-1 V7.1 1(2013-03)	<input checked="" type="checkbox"/> EN 301 488-1 V1.8 2(2013-08)
<input checked="" type="checkbox"/> EN 301 808-2 V8.2.1	<input checked="" type="checkbox"/> EN 301 488-2 V1.8 1(2013-08)
<input checked="" type="checkbox"/> EN 301 808-12 V8.2.1	<input checked="" type="checkbox"/> EN 301 488-F V1.3 1(2009-11)
<input checked="" type="checkbox"/> EN 301 883 V1.8 1(2013-03)	<input checked="" type="checkbox"/> EN 301 488-17 V2.2 1(2012-08)
<input checked="" type="checkbox"/> EN 62479:2010	<input checked="" type="checkbox"/> EN 301 488-24 V1.8 1(2013-08)

**LVD – Directive 2006/95/EC (until April 19th, 2016) and Directive 2014/35/EU (from April 20th, 2016)**

<input checked="" type="checkbox"/> EN 60950-1:2006 / A12:2011 EN 60950-1:2006 / A2:2013	<input checked="" type="checkbox"/> EN 60950:2002 / A12:2011
---	--

**Exemption – Directive 2006/105/EC**

<input type="checkbox"/> Regulation (EC) No. 1275/2008 Regulation (EC) No. 642/2009	<input type="checkbox"/> Regulation (EC) No. 278/2009 Regulation (EU) No. 617/2013
--	---

**RoHS – Directive 2011/65/EU**

Ver. 160217

**CE marking**

**Equipment Class 2**

**CE0682** (EU conformity marking)

Signature	Taipei, Taiwan Place of issue
Jerry Shen	06/06/2016
Printed Name	Date of issue
CEO	2016
Position	Year CE marking was first affixed

Declaração CE de Conformidade



Nós, os abaixo-assinados,

Fabricante:	ASUSTEK COMPUTER INC.
Endereço:	4F, No. 100, Li-Tsuei Rd., Peitou, Taipei 112, Taiwan
Representante autorizado na Europa:	ASUS COMPUTER GmbH
Endereço, cidade:	HARKORT STR. 27-29, 40880 RATINGSEN
País:	GERMANY

declaramos o seguinte aparelho:

Nome do produto:	ASUS Phone
Nome do modelo:	ASUS_Z012D/ASUS_Z012DA/ASUS_Z012DB

O objeto da declaração acima descrito está em conformidade com a legislação de harmonização da União aplicável:

**EMC Diretiva 2004/108/CE (até 19 de abril de 2016) e Diretiva 2014/53/UE (a partir de 20 de abril de 2016)**

<input checked="" type="checkbox"/> EN 55022:2011+AC:2011 EN 61000-3-2:2014	<input checked="" type="checkbox"/> EN 55024:2010 EN 61000-3-3:2013
--	--

**RATTE – Diretiva 1999/5/CE**

<input checked="" type="checkbox"/> EN 300 328 V1.8 1(2013-02)	<input checked="" type="checkbox"/> EN 62311:2008
<input checked="" type="checkbox"/> EN 300 640-1 V1.4 1(2010-08)	<input checked="" type="checkbox"/> EN 62209-1:2008
<input checked="" type="checkbox"/> EN 300 640-2 V1.4 1(2010-08)	<input checked="" type="checkbox"/> EN 62209-2:2010
<input checked="" type="checkbox"/> EN 301 811 V8.0 2(2003-03)	<input checked="" type="checkbox"/> EN 50368:2013+AC:2014
<input checked="" type="checkbox"/> EN 301 808-1 V7.1 1(2013-03)	<input checked="" type="checkbox"/> EN 301 488-1 V1.8 2(2013-08)
<input checked="" type="checkbox"/> EN 301 808-2 V8.2.1	<input checked="" type="checkbox"/> EN 301 488-2 V1.8 1(2013-08)
<input checked="" type="checkbox"/> EN 301 808-12 V8.2.1	<input checked="" type="checkbox"/> EN 301 488-F V1.3 1(2009-11)
<input checked="" type="checkbox"/> EN 301 883 V1.8 1(2013-03)	<input checked="" type="checkbox"/> EN 301 488-17 V2.2 1(2012-08)
<input checked="" type="checkbox"/> EN 62479:2010	<input checked="" type="checkbox"/> EN 301 488-24 V1.8 1(2013-08)

**LVD Diretiva 2006/95/CE (até 19 de abril de 2016) e Diretiva 2014/35/UE (a partir de 20 de abril de 2016)**

<input checked="" type="checkbox"/> EN 60950-1:2006 / A12:2011 EN 60950-1:2006 / A2:2013	<input checked="" type="checkbox"/> EN 60950:2002 / A12:2011
---	--

**Exempção – Diretiva 2006/105/CE**

<input type="checkbox"/> Regulation (EC) No. 1275/2008 Regulation (EC) No. 642/2009	<input type="checkbox"/> Regulation (EC) No. 278/2009 Regulation (EU) No. 617/2013
--	---

**RoHS – Diretiva 2011/65/UE**

Ver. 160217

**Marcação CE**

**Classe de equipamento 2**

**CE0682** (Marcação CE de conformidade)

Assinatura	Taipei, Taiwan Local de emissão
Jerry Shen	06/06/2016
Nome impresso	Data de emissão
CEO	2016
Posição	Ano marcação CE foi aposta por primeira vez

Declaratie de conformitate UE



Subsemnalul:

Produsător:	ASUSTEK COMPUTER INC.
Adresă:	4F, No. 100, Li-Ts Rd., PEITOU, TAINPEI 112, TAIWAN
Reprezentant autorizat în Europa:	ASUS COMPUTER GmbH
Adresă, Oraș:	HARKORT STR. 21-23, 40880 RATINGSÉN
Țară:	GERMANIA

declară următorul aparat:

Nume Produs :	ASUS Phone
Nume Model :	ASUS_Z012D/ASUS_Z012DA/ASUS_Z012DB

Obiectul declarației deconține mai sus este în conformitate cu legislația relevantă de armonizare a Uniunii :

<input checked="" type="checkbox"/> <b>CEM – Directiva 2004/108/CE (julgăt în 19 Aprilie 2016) și Directiva 2014/53/UE (julgăt în 20 Aprilie 2016)</b>	
<input checked="" type="checkbox"/> EN 55022:2010-AC:2011	<input checked="" type="checkbox"/> EN 55024:2010
<input checked="" type="checkbox"/> EN 61000-3-2:2014	<input checked="" type="checkbox"/> EN 61000-3-3:2013

<b>SATTE – Directiva 1999/5/CE</b>	
<input checked="" type="checkbox"/> EN 300 220 V1.8.1 (2010-02)	<input checked="" type="checkbox"/> EN 62311:2008
<input checked="" type="checkbox"/> EN 300 440-1 V1.8.1 (2010-08)	<input checked="" type="checkbox"/> EN 62209-1:2008
<input checked="" type="checkbox"/> EN 300 440-2 V1.8.1 (2010-08)	<input checked="" type="checkbox"/> EN 62209-2:2010
<input checked="" type="checkbox"/> EN 301 911 V8.0 (2003-03)	<input checked="" type="checkbox"/> EN 50369:2013-AC:2014
<input checked="" type="checkbox"/> EN 301 908-1 V7.1.1 (2010-03)	<input checked="" type="checkbox"/> EN 301 489-1 V1.8.2 (2011-08)
<input checked="" type="checkbox"/> EN 301 908-2 V8.2.1	<input checked="" type="checkbox"/> EN 301 489-3 V1.8.1 (2013-08)
<input checked="" type="checkbox"/> EN 301 908-12 V8.2.1	<input checked="" type="checkbox"/> EN 301 489-7 V1.3 (2009-11)
<input checked="" type="checkbox"/> EN 301 883 V1.8.1 (2010-03)	<input checked="" type="checkbox"/> EN 301 489-17 V2.2 (2012-08)
<input checked="" type="checkbox"/> EN 50369:2003-A1:2012	<input checked="" type="checkbox"/> EN 301 489-24 V1.8.1 (2010-08)
<input checked="" type="checkbox"/> EN 62479:2010	

<b>LVD – Directiva 2006/95/CE (julgăt în 19 Aprilie 2016) și Directiva 2014/35/UE (julgăt în 20 Aprilie 2016)</b>	
<input checked="" type="checkbox"/> EN 60950-1:2006 / A12:2011	<input type="checkbox"/> EN 60950:2002 / A12:2011
<input checked="" type="checkbox"/> EN 60950-2:2006 / A2:2013	

<b>Scodexon – Directiva 2006/123/CE</b>	
<input type="checkbox"/> Regulation (EC) No. 1276/2008	<input checked="" type="checkbox"/> Regulation (EC) No. 278/2009
<input type="checkbox"/> Regulation (EC) No. 843/2009	<input type="checkbox"/> Regulation (EU) No. 811/2013

<b>Safer – Directiva 2011/65/UE</b>	Ver. 160217
<b>RoHS – Directiva 2011/65/UE</b>	
<b>RoHS – Directiva 2011/65/UE</b>	
<b>RoHS – Directiva 2011/65/UE</b>	

CE06820

(Marcaj de conformitate UE)

Taipei, Taiwan

Semnătură

Locul emiterii

Jerry Shen

06/06/2016

Nume

Data emiterii

CEO

2016

Funcție

Anul în care Marcajul CE a fost aplicat pentru prima dată

EU Uygunluk Beyanı



Biz, bu imza altındaki

Dünyâ:	ASUSTEK COMPUTER INC.
Adres:	4F, No. 100, Li-Ts Rd., PEITOU, TAINPEI 112, TAIWAN
Avrupa'daki Yetkili:	ASUS COMPUTER GmbH
Adres, Şehir:	HARKORT STR. 21-23, 40880 RATINGSÉN
Ülke:	ALMANYA

Aşağıdaki ürünleri beyan ediyoruz :

Ürün adı :	ASUS Phone
Model adı :	ASUS_Z012D/ASUS_Z012DA/ASUS_Z012DB

Yukarıda belirtilen beyanın konusu birlik yasalarına göre uygundur:

<b>EMC – Direktif 2004/108/EC, 19 Nisan 2016'ya kadar ve Direktif 2014/53/EU, 20 Nisan 2016</b>	
<input checked="" type="checkbox"/> EN 55022:2010-AC:2011	<input checked="" type="checkbox"/> EN 55024:2010
<input checked="" type="checkbox"/> EN 61000-3-2:2014	<input checked="" type="checkbox"/> EN 61000-3-3:2013

<b>SATTE – Direktif 1999/5/CE</b>	
<input checked="" type="checkbox"/> EN 300 220 V1.8.1 (2010-02)	<input checked="" type="checkbox"/> EN 62311:2008
<input checked="" type="checkbox"/> EN 300 440-1 V1.8.1 (2010-08)	<input checked="" type="checkbox"/> EN 62209-1:2008
<input checked="" type="checkbox"/> EN 300 440-2 V1.8.1 (2010-08)	<input checked="" type="checkbox"/> EN 62209-2:2010
<input checked="" type="checkbox"/> EN 301 911 V8.0 (2003-03)	<input checked="" type="checkbox"/> EN 50369:2013-AC:2014
<input checked="" type="checkbox"/> EN 301 908-1 V7.1.1 (2010-03)	<input checked="" type="checkbox"/> EN 301 489-1 V1.8.2 (2011-08)
<input checked="" type="checkbox"/> EN 301 908-2 V8.2.1	<input checked="" type="checkbox"/> EN 301 489-3 V1.8.1 (2013-08)
<input checked="" type="checkbox"/> EN 301 908-12 V8.2.1	<input checked="" type="checkbox"/> EN 301 489-7 V1.3 (2009-11)
<input checked="" type="checkbox"/> EN 301 883 V1.8.1 (2010-03)	<input checked="" type="checkbox"/> EN 301 489-17 V2.2 (2012-08)
<input checked="" type="checkbox"/> EN 50369:2003-A1:2012	<input checked="" type="checkbox"/> EN 301 489-24 V1.8.1 (2010-08)
<input checked="" type="checkbox"/> EN 62479:2010	

<b>LVD – Direktif 2006/95/CE, 19 Nisan 2016'ya kadar ve Direktif 2014/35/EU, 20 Nisan 2016</b>	
<input checked="" type="checkbox"/> EN 60950-1:2006 / A12:2011	<input type="checkbox"/> EN 60950:2002 / A12:2011
<input checked="" type="checkbox"/> EN 60950-2:2006 / A2:2013	

<b>Scodexon – Direktif 2006/123/EC</b>	
<input type="checkbox"/> Regulation (EC) No. 1276/2008	<input checked="" type="checkbox"/> Regulation (EC) No. 278/2009
<input type="checkbox"/> Regulation (EC) No. 843/2009	<input type="checkbox"/> Regulation (EU) No. 811/2013

<b>Safer – Direktif 2011/65/UE</b>	Ver. 160217
<b>CE İşareti</b>	
<b>RoHS – Direktif 2011/65/UE</b>	

CE06820

(EU uygunluk işareti)

Taipei, Taiwan

İmza

Sürüm yılı

Jerry Shen

06/06/2016

Baskı Ad

Sürüm tarihi

CEO

2016

Pozisyonu

CE işaretinin ilk eklendiği yıl

# EU Konformitätserklärung



Hiermit erklären wir,

Fabrikant:	ASUSTEK COMPUTER INC.
Anschrift:	4F, No. 100, Li-Tseng Rd., Beitou, Taipei 112, Taiwan
Berechtigter:	ASUS COMPUTER GERMANY
Anschrift des Berechtigten:	HARKORT STR. 21-23, 43880 RATINGEN
Land:	GERMANY

dass nachstehend bezeichnete Produkte

Produktbezeichnung:	ASUS Phone
Modellbezeichnung:	ASUS_Z012D/ASUS_Z012DA/ASUS_Z012DB

mit den nachstehend angegebenen, für das Produkt geltenden Richtlinien/Bestimmungen übereinstimmen:

<input checked="" type="checkbox"/> <b>EMV – Richtlinie 2004/108/EG (bis 19. April 2016) und Richtlinie 2014/53/EU (ab 20. April 2016)</b>	<input checked="" type="checkbox"/> EN 50322:2010+AC:2011	<input checked="" type="checkbox"/> EN 50324:2010
	<input checked="" type="checkbox"/> EN 61000-3-2:2014	<input checked="" type="checkbox"/> EN 61000-3-2:2013

<b>SÄTTE – Richtlinie 1999/5/EG</b>	
<input checked="" type="checkbox"/> EN 300 328 V1.8 (1/2015-02)	<input checked="" type="checkbox"/> EN 62211:2008
<input checked="" type="checkbox"/> EN 300 440-1 V1.6 (1/2010-08)	<input checked="" type="checkbox"/> EN 62209-1:2008
<input checked="" type="checkbox"/> EN 300 440-2 V1.4 (1/2010-08)	<input checked="" type="checkbox"/> EN 62209-2:2010
<input checked="" type="checkbox"/> EN 301 911 V9.0 (2/2003-03)	<input checked="" type="checkbox"/> EN 60882:2013+AC:2014
<input checked="" type="checkbox"/> EN 301 908-1 V1.1 (1/2015-03)	<input checked="" type="checkbox"/> EN 301 489-1 V1.8.2 (2011-08)
<input checked="" type="checkbox"/> EN 301 908-2 V8.2.1	<input checked="" type="checkbox"/> EN 301 489-2 V1.8 (1/2013-08)
<input checked="" type="checkbox"/> EN 301 908-12 V8.2.1	<input checked="" type="checkbox"/> EN 301 489-7 V1.3 (1/2009-11)
<input checked="" type="checkbox"/> EN 301 883 V1.8 (1/2015-03)	<input checked="" type="checkbox"/> EN 301 489-17 V2.2 (1/2012-08)
<input checked="" type="checkbox"/> EN 50360:2007+A1:2012	<input checked="" type="checkbox"/> EN 301 489-24 V1.5 (1/2010-08)
<input checked="" type="checkbox"/> EN 62478:2010	

<input checked="" type="checkbox"/> <b>LVD – Richtlinie 2006/95/CE (bis 19. April 2016) und Richtlinie 2014/35/EU (ab 20. April 2016)</b>	<input checked="" type="checkbox"/> EN 60950-1:2008 / A12:2011	<input type="checkbox"/> EN 60950-2:2012 / A12:2011
<input checked="" type="checkbox"/> EN 60950-1:2008 / A2:2013		

<b>Roboter – Richtlinie 2006/42/EG</b>	
<input type="checkbox"/> Verordnung (EG) Nr. 1275/2008	<input checked="" type="checkbox"/> Verordnung (EG) Nr. 279/2009
<input checked="" type="checkbox"/> Verordnung (EG) Nr. 843/2009	<input checked="" type="checkbox"/> Verordnung (EG) Nr. 817/2013

<input checked="" type="checkbox"/> <b>RoHS – Richtlinie 2011/65/EU</b>	Ver. 16/2017
---	--------------

<input checked="" type="checkbox"/> CE Kennzeichen
<input checked="" type="checkbox"/> Schutzniveau 2

**CE0682** (EU Konformitätszeichen)

Unterschrift	Taipei, Taiwan
Jerry Shen	Ort
Name	06/06/2016
CEO	Datum
Position	2016
	Jahr der Kennzeichenvergabe

# UE Declaración de Conformidad



Nosotros, los abajo firmantes,

Fabricante:	ASUSTEK COMPUTER INC.
Dirección:	4F, No. 100, Li-Tseng Rd., Beitou, Taipei 112, Taiwan
Representante autorizado en Europa:	ASUS COMPUTER GERMANY
Dirección, Ciudad:	HARKORT STR. 21-23, 43880 RATINGEN
País:	GERMANY

Declaramos el siguiente producto:

Nombre del aparato:	ASUS Phone
Nombre del modelo:	ASUS_Z012D/ASUS_Z012DA/ASUS_Z012DB

El signo de la declaración describe anteriormente en conforma con la legislación de armonización pertinente de la Unión.

<input checked="" type="checkbox"/> <b>EMC Directiva 2004/108/CE (hasta el 19 de abril 2016) y Directiva 2014/53/UE (desde el 20 de abril 2016)</b>	<input checked="" type="checkbox"/> EN 50322:2010+AC:2011	<input checked="" type="checkbox"/> EN 50324:2010
	<input checked="" type="checkbox"/> EN 61000-3-2:2014	<input checked="" type="checkbox"/> EN 61000-3-2:2013

<b>SÄTTE – Directiva 1999/5/CE</b>	
<input checked="" type="checkbox"/> EN 300 328 V1.8 (1/2015-02)	<input checked="" type="checkbox"/> EN 62211:2008
<input checked="" type="checkbox"/> EN 300 440-1 V1.6 (1/2010-08)	<input checked="" type="checkbox"/> EN 62209-1:2008
<input checked="" type="checkbox"/> EN 300 440-2 V1.4 (1/2010-08)	<input checked="" type="checkbox"/> EN 62209-2:2010
<input checked="" type="checkbox"/> EN 301 911 V9.0 (2/2003-03)	<input checked="" type="checkbox"/> EN 60882:2013+AC:2014
<input checked="" type="checkbox"/> EN 301 908-1 V1.1 (1/2015-03)	<input checked="" type="checkbox"/> EN 301 489-1 V1.8.2 (2011-08)
<input checked="" type="checkbox"/> EN 301 908-2 V8.2.1	<input checked="" type="checkbox"/> EN 301 489-2 V1.8 (1/2013-08)
<input checked="" type="checkbox"/> EN 301 908-12 V8.2.1	<input checked="" type="checkbox"/> EN 301 489-7 V1.3 (1/2009-11)
<input checked="" type="checkbox"/> EN 301 883 V1.8 (1/2015-03)	<input checked="" type="checkbox"/> EN 301 489-17 V2.2 (1/2012-08)
<input checked="" type="checkbox"/> EN 50360:2007+A1:2012	<input checked="" type="checkbox"/> EN 301 489-24 V1.5 (1/2010-08)
<input checked="" type="checkbox"/> EN 62478:2010	

<input checked="" type="checkbox"/> <b>LVD Directiva 2006/95/CE (hasta el 19 de abril 2016) y Directiva 2014/35/UE (desde el 20 de abril 2016)</b>	<input checked="" type="checkbox"/> EN 60950-1:2008 / A12:2011	<input type="checkbox"/> EN 60950-2:2012 / A12:2011
<input checked="" type="checkbox"/> EN 60950-1:2008 / A2:2013		

<b>Robots Escudo – Directiva 2006/42/CE</b>	
<input type="checkbox"/> Regulation (EC) No. 1275/2008	<input checked="" type="checkbox"/> Regulation (EC) No. 279/2009
<input checked="" type="checkbox"/> Regulation (EC) No. 843/2009	<input checked="" type="checkbox"/> Regulation (EU) No. 817/2013

<input checked="" type="checkbox"/> <b>RoHS – Directiva 2011/65/UE</b>	Ver. 16/2017
--	--------------

<input checked="" type="checkbox"/> Marcado CE
<input checked="" type="checkbox"/> Clase de equipo 2

**CE0682** (Marcado CE de conformidad)

Firma	Taipei, Taiwan
Jerry Shen	Lugar de emisión
Nombre impreso	06/06/2016
CEO	Fecha de emisión
Position	2016
	Año en que se colocó el marcado CE por primera vez

# DECLARATION UE DE CONFORMITE



## Nous, soussignés

Fabricant:	ASUSTEK COMPUTER INC.
Adresse:	2F, No. 150, Li-Tse Rd., Pei-Tou, Taipei 110, TAIWAN
Représentant autorisé en Europe:	ASUS COMPUTER GERMANY
Adresse, ville:	HANNOVER STR. 27-29, 30686 HANNOVER
Pays:	GERMANY

## Déclarons l'appareil suivant:

Nom du produit :	ASUS Phone
Nom du modèle :	ASUS_Z012D/ASUS_Z012DA/ASUS_Z012DB

L'objet de la déclaration décrit ci-dessus est conforme avec la législation d'harmonisation de l'Union applicable

Directive CEM 2004/108/CE (jusqu'au 19 avril 2016) et la directive 2014/53/UE (à partir du 20 avril 2016)

<input checked="" type="checkbox"/> EN 60529:2010+AC:2011	<input checked="" type="checkbox"/> EN 60958:2010
<input checked="" type="checkbox"/> EN 61000-3-2:2014	<input checked="" type="checkbox"/> EN 61000-3-3:2013

Directive RAFFE 1999/5/CE

<input checked="" type="checkbox"/> EN 300 220 V1.8.1(2010-02)	<input checked="" type="checkbox"/> EN 62211:2008
<input checked="" type="checkbox"/> EN 300 440-1 V1.8.1(2010-08)	<input checked="" type="checkbox"/> EN 62209-1:2008
<input checked="" type="checkbox"/> EN 300 440-2 V1.8.1(2010-08)	<input checked="" type="checkbox"/> EN 62209-2:2010
<input checked="" type="checkbox"/> EN 301 871 V8.0(2010-02)	<input checked="" type="checkbox"/> EN 60968:2013+AC:2014
<input checked="" type="checkbox"/> EN 301 808-1 V1.5.1(2010-02)	<input checked="" type="checkbox"/> EN 301 488-1 V1.8.1(2011-08)
<input checked="" type="checkbox"/> EN 301 808-2 V8.2.1	<input checked="" type="checkbox"/> EN 301 488-2 V1.8.1(2013-08)
<input checked="" type="checkbox"/> EN 301 808-10 V8.2.1	<input checked="" type="checkbox"/> EN 301 488-7 V1.3.1(2009-11)
<input checked="" type="checkbox"/> EN 301 800 V1.8.1(2010-02)	<input checked="" type="checkbox"/> EN 301 488-17 V2.2.1(2012-08)
<input checked="" type="checkbox"/> EN 60385:2007+A1:2012	<input checked="" type="checkbox"/> EN 301 488-04 V1.8.1(2010-08)
<input checked="" type="checkbox"/> EN 50478:2008	

Directive LVD 2006/95/CE (jusqu'au 19 avril 2016) et la directive 2014/30/UE (à partir du 20 avril 2016)

<input checked="" type="checkbox"/> EN 60950-1: 2006 / A12: 2011	<input checked="" type="checkbox"/> EN 60950:2002 / A12: 2011
<input checked="" type="checkbox"/> EN 60950-1: 2006 / A2: 2013	

Directive Association 2006/125/CE

<input checked="" type="checkbox"/> Regulation (CE) No. 1275:2008	<input checked="" type="checkbox"/> Regulation (CE) No. 278:2009
<input checked="" type="checkbox"/> Regulation (CE) No. 662:2009	<input checked="" type="checkbox"/> Regulation (CE) No. 677:2013

Directive RoHS 2011/65/UE

Ver. 140217

Marquage CE

Environnement de classe 2



(Marquage UE de conformité)

Signature

Jerry Shen

Nom en caractères d'imprimerie

CEO

Position

Taipei, Taiwan

Lieu de délivrance

06/06/2016

Date d'Emission

2016

Année où commence l'apposition du marquage CE

## DECLARATION OF CONFORMITY

Per FCC Part 2 Section 2. 1077(a)



Responsible Party Name: **Asus Computer International**

Address: **800 Corporate Way, Fremont, CA 94539.**

Phone/Fax No: **(510)739-3773/(510)608-4555**

hereby declares that the product

**Product Name : ASUS Phone**

**Model Number : ASUS\_Z012DC**

Conforms to the following specifications:

FCC Part 15, Subpart B, Unintentional Radiators

Supplementary Information:

This device complies with part 15 of the FCC Rules. Operation is subject to the following two conditions: (1) This device may not cause harmful interference, and (2) this device must accept any interference received, including interference that may cause undesired operation.

Representative Person's Name : **Steve Chang / President**

Signature :

Date : **Jun. 06, 2016**

Ver. 140331

# ASUS

**Address: 4F, 150 Li-Te Road, Peitou, Taipei,  
Taiwan**

**Tel: 886228943447**

**Fax: 886228907698**

## Declaration

We declare that the IMEI codes for this product, **ASUS Phone**, are unique to each unit and only assigned to this model. The IMEI of each unit is factory set and cannot be altered by the user and that it complies with the relevant IMEI integrity related requirements expressed in the GSM standards.

Should you have any questions or comments regarding this matter, please contact us.

Sincerely yours,

**ASUSTeK COMPUTER INC.**

Tel: 886228943447

Fax: 886228907698

Support: <http://vip.asus.com/eservice/techserv.aspx>

Copyright © 2016 ASUSTeK COMPUTER INC.

All Rights Reserved.

You acknowledge that all rights of this Manual remain with ASUS. Any and all rights, including without limitation, in the Manual or website, and shall remain the exclusive property of ASUS and/or its licensors. Nothing in this Manual intends to transfer any such rights, or to vest any such rights to you.

ASUS PROVIDES THIS MANUAL "AS IS" WITHOUT WARRANTY OF ANY KIND. SPECIFICATIONS AND INFORMATION CONTAINED IN THIS MANUAL ARE FURNISHED FOR INFORMATIONAL USE ONLY, AND ARE SUBJECT TO CHANGE AT ANY TIME WITHOUT NOTICE, AND SHOULD NOT BE CONSTRUED AS A COMMITMENT BY ASUS.

[ZenTalk Fans Forum](#)

[http://www.asus.com/zentalk/global\\_forward.php](http://www.asus.com/zentalk/global_forward.php)



1 5 0 6 0 - 7 9 7 0 0 2 0 0