

ASUS Phone

IN SEARCH OF INCREDIBLE

User Guide



E11896

ASUS

Second Edition/ July 2016

Model:ASUS_Z01BD(ZC551KL)

ASUS_Z01BDA for TW/JP/HK/PH

ASUS_Z01BDB for IN/ID/TH

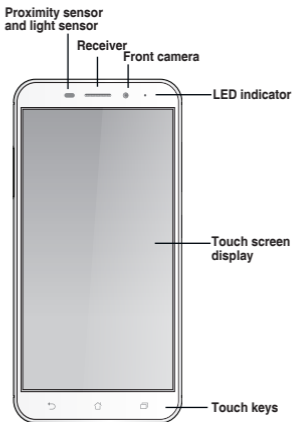
ASUS_Z01BDC for US/BR

ZC551KL for RU

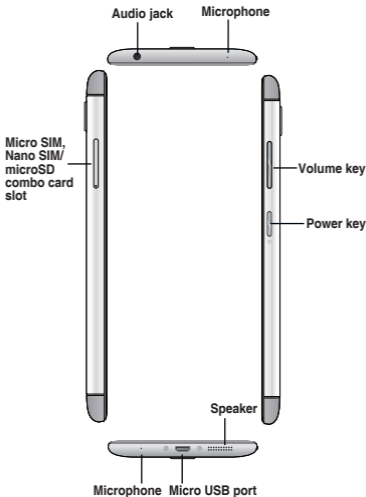
Before you start, ensure that you have read all the safety information and operating instructions in this **User Guide** to prevent injury or damage to your device.

NOTE: For the latest updates and more detailed information, please visit www.asus.com.

Front features



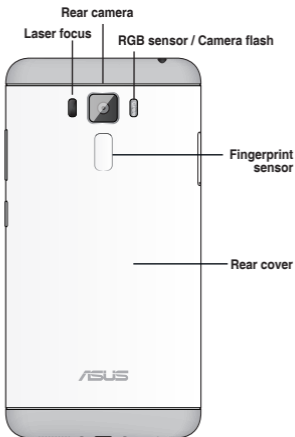
Side features



NOTES:

- The Micro SIM / Nano SIM card slots support LTE, WCDMA and GSM/EDGE network bands.
 - The microSD card slot supports microSD and microSDHC card formats.
-

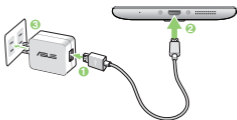
Rear features



Charging your ASUS Phone

To charge your ASUS Phone:

1. Connect the USB connector into the power adapter's USB port.
2. Connect the other end of the micro USB cable to your ASUS Phone.
3. Plug the power adapter into a wall socket.



IMPORTANT!

- When using your ASUS Phone while it is plugged to a power outlet, the grounded power outlet must be near to the unit and easily accessible.
- When charging your ASUS Phone through your computer, ensure that you plug the micro USB cable to your computer's USB 2.0 / USB 3.0 port.
- Avoid charging your ASUS Phone in an environment with ambient temperature of above 35 °C (95 °F).

NOTES:

- Use only the power adapter that came with your device. Using a different power adapter may damage your device.
 - Using the bundled power adapter and ASUS Phone signal cable to connect your ASUS Phone to a power outlet is the best way to charge your ASUS Phone.
 - Use the ASUS 5W power adapter and ASUS USB cable to get the best fast-charge experience when your ASUS Phone is in sleep mode.
 - The input voltage range between the wall outlet and this adapter is AC 100V - 240V. The output voltage of the micro USB cable is +5.2V=1A, 5W.
-

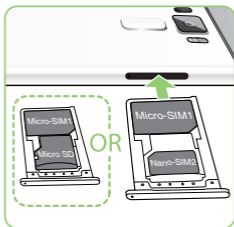
Installing a Micro SIM / Nano SIM / MicroSD card

To install a Micro SIM / Nano SIM / MicroSD card:

1. Push a pin into the hole on the Micro SIM / Nano SIM / MicroSD card tray to eject it.



2. Insert the Micro SIM / Nano SIM or MicroSD card(s) into the card slot(s).



IMPORTANT: You can only use the Nano SIM card or the MicroSD card at a time.

3. Push the tray to close it



IMPORTANT: Both Micro SIM and Nano SIM card slots support 3G WCDMA and 4G LTE network bands. But only one SIM card can connect to 3G WCDMA / 4G LTE service at a time.

CAUTION!

- Do not use sharp tools or solvent on your device to avoid scratches on it.
 - Use only a standard micro SIM card on your ASUS Phone. A nano to micro SIM adapter or a trimmed SIM card may not properly fit into and may not be detected by your ASUS Phone.
 - **DO NOT install an empty nano to micro SIM adapter into the micro SIM card slot to avoid irreversible damage.**
-

Federal Communications Commission Statement

This device complies with part 15 of the FCC Rules. Operation is subject to the following two conditions: (1) This device may not cause harmful interference, and (2) this device must accept any interference received, including interference that may cause undesired operation.

Changes or modifications not expressly approved by the party responsible for compliance could void the user's authority to operate the equipment.

The antenna(s) used for this transmitter must not be co-located or operated in conjunction with any other antenna or transmitter.

This equipment has been tested and found to comply with the limits for a Class B digital device, pursuant to part 15 of the FCC Rules. These limits are designed to provide reasonable protection against harmful interference in a residential installation. This equipment generates, uses and can radiate radio frequency energy and, if not installed and used in accordance with the instructions, may cause harmful interference to radio communications. However, there is no guarantee that interference will not occur in a particular installation. If this equipment does cause harmful interference to radio or television reception, which can be determined by turning the equipment off and on, the user is encouraged to try to correct the interference by one or more of the following measures:

- Reorient or relocate the receiving antenna.
- Increase the separation between the equipment and receiver.
- Connect the equipment into an outlet on a circuit different from that to which the receiver is connected.

- Consult the dealer or an experienced radio/TV technician for help.

The country code selection is for non-US models only and is not available to all US models. Per FCC regulation, all WiFi products that are marketed in US must be fixed to US-operated channels only.

The FCC ID: for this device is MSQZ01BDC.

Canada, Industry Canada (IC)

Notices

This device complies with Industry Canada's licence-exempt RSS standard(s). Operation is subject to the following two conditions:

- (1) This device may not cause interference; and
- (2) This device must accept any interference, including interference that may cause undesired operation of the device.

Le présent appareil est conforme aux CNR d'Industrie Canada applicables aux appareils radio exempts de licence. L'exploitation est autorisée aux deux conditions suivantes:

- (1) l'appareil ne doit pas produire de brouillage, et
- (2) l'utilisateur de l'appareil doit accepter tout brouillage radioélectrique subi, même si le brouillage est susceptible d'en compromettre le fonctionnement.

CAN ICES-3(B)/NMB-3(B)

This Class B digital apparatus complies with Canadian ICES-003.

Cet appareil numérique de la classe B est conforme à la norme NMB-003 du Canada.

The IC ID for this device is 3568A-Z01BDC.

L'identifiant Industrie Canada de cet appareil est: 3568A-Z01BDC.

This device and its antenna(s) must not be co-located or operated in conjunction with any other antenna or transmitter, except tested built-in radios.

Cet appareil et son antenne ne doivent pas être situés ou fonctionner en conjonction avec une autre antenne ou un autre émetteur, exception faites des radios intégrées qui ont été testées.

The County Code Selection feature is disabled for products that are marketed in the US/ Canada.

La fonction de sélection de l'indicatif du pays est désactivée pour les produits commercialisés aux États-Unis et au Canada.

FOR PORTABLE DEVICE (<20cm from body / SAR needed)

Radiation Exposure Statement:

The product complies with the Canada portable RF exposure limit set forth for an uncontrolled environment and is safe for intended operation as described in this manual. RF exposure can be reduced further if the product can be kept as far as possible from the user body or if it is set to a lower output power, if such function is available.

Additional statement for phones:

This device has been tested for compliance with IC SAR values at a typical operating near the body. To ensure that RF exposure levels are below the levels tested, use accessories with this equipment to maintain a minimum separation distance of 1 cm between the body of the user and the device. These accessories should not contain metallic components. It is possible that the accessories used close to the body that do not meet these requirements are not consistent with the SAR limits and it is advisable to avoid using them.

Déclaration d'exposition aux radiations:

Le produit est conforme aux limites d'exposition pour les appareils portables RF pour les Etats-Unis et le Canada établies pour un environnement non contrôlé. Le produit est sûr pour un fonctionnement tel que décrit dans ce manuel. La réduction aux expositions RF peut être augmentée si l'appareil peut être conservé aussi loin que possible du corps de l'utilisateur ou que le dispositif est réglé sur la puissance de sortie la plus faible si une telle fonction est disponible.

Additional statement for phones:

Ce dispositif a été testé pour la conformité avec les valeurs SAR à un fonctionnement typique près du corps . Pour assurer que les niveaux d'exposition aux radiofréquences en deçà des niveaux testés , utiliser des accessoires avec cet équipement pour maintenir une distance de séparation minimale de 1 cm entre le corps de l'utilisateur et l'appareil. Ces accessoires ne doivent pas contenir des composants métalliques . Il est possible que les accessoires utilisés près du corps qui ne répondent pas à ces exigences ne sont pas compatibles avec les limites SAR et il est conseillé d'éviter de les utiliser.

RF Exposure Information (SAR)

This device has been tested and meets applicable limits for Radio Frequency (RF) exposure.

Specific Absorption Rate (SAR) refers to the rate at which the body absorbs RF energy. SAR limits are 1.6 Watts per kilogram (over a volume containing a mass of 1 gram of tissue) in countries that follow the United States FCC limit and 2.0 W/kg (averaged over 10 grams of tissue) in countries that follow the Council of the European Union limit. Tests for SAR are conducted using standard operating positions with the device transmitting at its highest certified power level in all tested frequency bands.

To reduce exposure to RF energy, use a hands-free accessory or other similar option to keep this device from your head and body. Carry this device at least 10 mm away from your body to ensure exposure levels remain at or below the as-tested levels. Choose the belt clips, holsters, or other similar body-worn accessories which do not contain metallic components to support operation in this manner. Cases with metal parts may change the RF performance of the device, including its compliance with RF exposure guidelines, in a manner that has not been tested or certified, and use such accessories should be avoided.

The highest FCC SAR value for the device is 1.19W/kg @ 1g.

The FCC has granted an Equipment Authorization for this device with all reported SAR levels evaluated as in compliance with the FCC RF exposure guidelines. SAR information on this device is on file with the FCC and can be found under the Display Grant section of www.fcc.gov/oet/ea/fccid after searching on FCC ID: MSQZ01BDC.

CE RF Exposure Compliance

This device meets the EU requirements (1999/519/EC) on the limitation of exposure of the general public to electromagnetic fields by way of health protection.

For body-worn operation, this device has been tested and meets the ICNIRP guidelines and the European Standard EN 62209-2, for use with dedicated accessories. SAR is measured with this device at a separation of 0.5 cm to the body, while transmitting at the highest certified output power level in all frequency bands of this device. Use of other accessories which contain metals may not ensure compliance with ICNIRP exposure guidelines.

CE Mark Warning

C **€0560**

CE marking for devices with wireless LAN/ Bluetooth

This equipment complies with the requirements of Directive 1999/5/EC of the European Parliament and Commission from 9 March, 1999 governing Radio and Telecommunications Equipment and mutual recognition of conformity. The highest CE SAR values for the device are as follows:

- 0.430 W/kg@ 10g (Head)
- 0.898 W/kg@ 10g (Body)

Laser safety information

CLASS 1 LASER PRODUCT

Using GPS (Global Positioning System) on your ASUS Phone

To use the GPS positioning feature on your ASUS Phone:

- Ensure that your device is connected to the Internet before using Google Map or any GPS-enabled apps.
- For first-time use of a GPS-enabled app on your device, ensure that you are outdoors to get the best positioning data.
- When using a GPS-enabled app on your device inside a vehicle, the metallic component of the car window and other electronic devices might affect the GPS performance.

Prevention of Hearing Loss

To prevent possible hearing damage, do not listen at high volume levels for long periods.



A pleine puissance, l'écoute prolongée du baladeur peut endommager l'oreille de l'utilisateur.

For France, headphones/earphones for this device are compliant with the sound pressure level requirement laid down in the applicable EN 50332-1:2013 and/or EN50332-2:2013 standard required by French Article L.5232-1.

Safety information

ASUS Phone care

- Use your ASUS Phone in an environment with ambient temperatures between 0 °C (32 °F) and 35 °C (95 °F).

The battery

Your ASUS Phone is equipped with a high performance non-detachable Li-polymer battery. Observe the maintenance guidelines for a longer battery life.

- Do not remove the non-detachable Li-polymer battery as this will void the warranty.
- Avoid charging in extremely high or low temperature. The battery performs optimally in an ambient temperature of +5 °C to +35 °C.
- Do not remove and replace the battery with a non-approved battery.
- Do not remove and soak the battery in water or any other liquid.
- Never try to open the battery as it contains substances that might be harmful if swallowed or allowed to come into contact with unprotected skin.
- Do not remove and short-circuit the battery, as it may overheat and cause a fire. Keep it away from jewelry or metal objects.
- Do not remove and dispose of the battery in fire. It could explode and release harmful substances into the environment.
- Do not remove and dispose of the battery with your regular household waste. Take it to a hazardous material collection point.
- Do not touch the battery terminals.

NOTES:

- Risk of explosion if battery is replaced by an incorrect type.
 - Dispose of used battery according to the instructions.
-

The charger

- Use only the charger supplied with your ASUS Phone.
- Never pull the charger cord to disconnect it from the power socket. Pull the charger itself.

Caution

Your ASUS Phone is a high quality piece of equipment. Before operating, read all instructions and cautionary markings on the (1) AC Adapter.

- Do not use the ASUS Phone in an extreme environment where high temperature or high humidity exists. The ASUS Phone performs optimally in an ambient temperature between 0 °C (32 °F) and 35 °C (95 °F).
- Do not disassemble the ASUS Phone or its accessories. If service or repair is required, return the unit to an authorized service center. If the unit is disassembled, a risk of electric shock or fire may result.
- Do not short-circuit the battery terminals with metal items.

Operator access with a tool

If a TOOL is necessary to gain access to an OPERATOR ACCESS AREA, either all other compartments within that area containing a hazard shall be inaccessible to the OPERATOR by the use of the same TOOL, or such compartments shall be marked to discourage OPERATOR access.

ASUS Recycling/Takeback Services

ASUS recycling and takeback programs come from our commitment to the highest standards for protecting our environment. We believe in providing solutions for you to be able to responsibly recycle our products, batteries, other components as well as the packaging materials. Please go to <http://csr.asus.com/english/Takeback.htm> for detailed recycling information in different regions.

Regional notice for Singapore

This ASUS Phone complies with IDA Standards.

Complies with
IDA Standards
DB103778

Proper disposal



Risk of explosion if battery is replaced by an incorrect type. Dispose of used batteries according to the instructions.



DO NOT throw the battery in municipal waste. The symbol of the crossed out wheeled bin indicates that the battery should not be placed in municipal waste.



DO NOT throw this product in municipal waste. This product has been designed to enable proper reuse of parts and recycling. The symbol of the crossed out wheeled bin indicates that the product (electrical, electronic equipment and mercury-containing button cell battery) should not be placed in municipal waste. Check local regulations for disposal of electronic products.



DO NOT throw this product in fire.
DO NOT short circuit the contacts.
DO NOT disassemble this product.

WARNING! This product may contain chemicals known to the State of California to cause cancer, birth defects, or other reproductive harm. Wash hands after handling.

EU Declaration of Conformity



We, the undersigned,

Manufacturer:	ASUSTEK COMPUTER INC.
Address:	#F, No. 100, LI-FU RD., PEITOU, TAINAN 712, TAIWAN
Authorized representative in Europe:	ASUS COMPUTER GMBH
Address, City:	HARKORT STR. 21-23, 40880 RATINGSSEN
Country:	GERMANY

declare the following apparatus:

Product name :	ASUS Phone
Model name :	ASUS_Z01BD, ASUS_Z01BDB, ASUS_Z01BDA

The object of the declaration described above is in conformity with the relevant Union harmonization legislation:

EMC – Directive 2004/108/EC (until April 19th, 2016) and Directive 2014/53/EU (from April 20th, 2016)

<input type="checkbox"/> EN 55022:2010+AC:2011	<input type="checkbox"/> EN 55024:2010
<input type="checkbox"/> EN 61000-3-2:2009+AC:2010	<input type="checkbox"/> EN 61000-3-3:2013
<input type="checkbox"/> EN 55013:2007+AC:2009+AC:2009	<input type="checkbox"/> EN 55015:2007+A11:2011

R&TTE – Directive 1999/5/EC

<input type="checkbox"/> EN 300 328 V1.8.1 (2010-02)	<input type="checkbox"/> EN 300 489-1 V1.8.2 (2011-08)
<input type="checkbox"/> EN 300 440-2 V1.6.1 (2010-08)	<input type="checkbox"/> EN 300 489-2 V1.6.1 (2011-12)
<input type="checkbox"/> EN 300 440-2 V1.6.1 (2010-08)	<input type="checkbox"/> EN 300 489-4 V2.1.1 (2013-12)
<input type="checkbox"/> EN 300 511 V8.0.2 (2003-03)	<input type="checkbox"/> EN 300 489-7 V1.3.1 (2008-11)
<input type="checkbox"/> EN 300 908-1 V1.1.1	<input type="checkbox"/> EN 300 489-9 V1.6.1 (2007-11)
<input type="checkbox"/> EN 300 908-2 V8.2.1 (2013-10)	<input type="checkbox"/> EN 300 489-11 V2.2.1 (2012-08)
<input type="checkbox"/> EN 300 908-13 V8.2.1 (2013-10)	<input type="checkbox"/> EN 300 489-24 V1.8.1 (2010-10)
<input type="checkbox"/> EN 300 320-2 V1.5.1 (2010-02)	<input type="checkbox"/> EN 300 387-2 V1.6.1 (2008-11)
<input type="checkbox"/> EN 60960:2005/A1:2012	<input type="checkbox"/> EN 300 281-2 V1.1.1 (2008-07)
<input type="checkbox"/> EN 62479:2010	<input type="checkbox"/> EN 50385:2002
<input type="checkbox"/> EN 62209-1:2008	<input type="checkbox"/> EN 50966:2013/AC:2014
<input type="checkbox"/> EN 62209-2:2013	<input type="checkbox"/> EN 62011:2008

LVD – Directive 2006/95/EC (until April 19th, 2016) and Directive 2014/35/EU (from April 20th, 2016)

<input type="checkbox"/> EN 60950-1:2006 / A12:2011	<input type="checkbox"/> EN 60950-1:2006 / A1:2009
<input type="checkbox"/> EN 60950-2:2006 / A2:2013	<input type="checkbox"/> EN 60950-2:2006 / A1:2010

Ecodesign – Directive 2009/125/EC

<input type="checkbox"/> Regulation (EC) No. 1275/2008	<input type="checkbox"/> Regulation (EC) No. 278/2008
<input type="checkbox"/> Regulation (EC) No. 642/2009	<input type="checkbox"/> Regulation (EU) No. 67/2013

RoHS – Directive 2011/65/EU

Ver. 16027

CE marking
 Equipment Class 1

CE0560

(EU conformity marking)

Signature	Taipei, Taiwan
Jerry Shen	Place of issue
Printed Name	1/8/2016
CEO	Date of issue
Position	2016
	Year CE marking was first affixed

Declaração CE de Conformidade



Nós, os abaixo-assinados,

Fabricante:	ASUSTEK COMPUTER INC.
Endereço:	#F, No. 100, LI-FU RD., PEITOU, TAINAN 712, TAIWAN
Representante autorizado na Europa:	ASUS COMPUTER GMBH
Endereço, cidade:	HARKORT STR. 21-23, 40880 RATINGSSEN
País:	GERMANY

declaramos o seguinte aparelho:

Nome do produto:	ASUS Phone
Nome do modelo:	ASUS_Z01BD, ASUS_Z01BDB, ASUS_Z01BDA

O objeto da declaração acima descrito está em conformidade com a legislação de harmonização da União aplicável:

EMC Diretiva 2004/108/CE (até 19 de abril de 2016) e Diretiva 2014/53/UE (a partir de 20 de abril de 2016)

<input type="checkbox"/> EN 55022:2010+AC:2011	<input type="checkbox"/> EN 55024:2010
<input type="checkbox"/> EN 61000-3-2:2009+AC:2010	<input type="checkbox"/> EN 61000-3-3:2013
<input type="checkbox"/> EN 55013:2007+AC:2009+AC:2009	<input type="checkbox"/> EN 55015:2007+A11:2011

R&TTE – Diretiva 1999/5/CE

<input type="checkbox"/> EN 300 328 V1.8.1 (2010-02)	<input type="checkbox"/> EN 300 489-1 V1.8.2 (2011-08)
<input type="checkbox"/> EN 300 440-2 V1.6.1 (2010-08)	<input type="checkbox"/> EN 300 489-2 V1.6.1 (2011-12)
<input type="checkbox"/> EN 300 440-2 V1.6.1 (2010-08)	<input type="checkbox"/> EN 300 489-4 V2.1.1 (2013-12)
<input type="checkbox"/> EN 300 511 V8.0.2 (2003-03)	<input type="checkbox"/> EN 300 489-7 V1.3.1 (2008-11)
<input type="checkbox"/> EN 300 908-1 V1.1.1	<input type="checkbox"/> EN 300 489-9 V1.6.1 (2007-11)
<input type="checkbox"/> EN 300 908-2 V8.2.1 (2013-10)	<input type="checkbox"/> EN 300 489-11 V2.2.1 (2012-08)
<input type="checkbox"/> EN 300 908-13 V8.2.1 (2013-10)	<input type="checkbox"/> EN 300 489-24 V1.8.1 (2010-10)
<input type="checkbox"/> EN 300 320-2 V1.5.1 (2010-02)	<input type="checkbox"/> EN 300 387-2 V1.6.1 (2008-11)
<input type="checkbox"/> EN 60960:2005/A1:2012	<input type="checkbox"/> EN 300 281-2 V1.1.1 (2008-07)
<input type="checkbox"/> EN 62479:2010	<input type="checkbox"/> EN 50385:2002
<input type="checkbox"/> EN 62209-1:2008	<input type="checkbox"/> EN 50966:2013/AC:2014
<input type="checkbox"/> EN 62209-2:2013	<input type="checkbox"/> EN 62011:2008

LVD Diretiva 2006/95/CE (até 19 de abril de 2016) and Diretiva 2014/35/UE (a partir de 20 de abril de 2016)

<input type="checkbox"/> EN 60950-1:2006 / A12:2011	<input type="checkbox"/> EN 60950-1:2006 / A1:2009
<input type="checkbox"/> EN 60950-2:2006 / A2:2013	<input type="checkbox"/> EN 60950-2:2006 / A1:2010

Ecodesign – Diretiva 2009/125/CE

<input type="checkbox"/> Regulation (EC) No. 1275/2008	<input type="checkbox"/> Regulation (EC) No. 278/2008
<input type="checkbox"/> Regulation (EC) No. 642/2009	<input type="checkbox"/> Regulation (EU) No. 67/2013

RoHS – Diretiva 2011/65/UE

Ver. 16027

Marcação CE
 Classe de equipamento 1

CE0560

(Marcação CE de conformidade)

Assinatura	Taipei, Taiwan
Jerry Shen	Local de emissão
Nome impresso	1/8/2016
CEO	Data de emissão
Position	2016
	Ano marcação CE foi aposta por primeira vez

Declarație de conformitate UE



Subsemnatul,	
Producător :	ASUSTEK COMPUTER INC.
Adresă :	4F, No. 100, Li-Tsuei Rd., Peitou, Taipei 112, Taiwan
Reprezentant autorizat în Europa:	ASUS COMPUTER GmbH
Adresă, Oraș:	HARKORT STR. 21-23, 40880 RATINGSÉN
Țară:	GERMANIA

declară următorul aparat:	
Nume Produs :	ASUS Phone
Nume Model :	ASUS_Z01BD, ASUS_Z01BDB, ASUS_Z01BDA

Obiectul declarației deșcrită mai sus este în conformitate cu legislația relevantă de armonizare a Uniunii :

<input checked="" type="checkbox"/> CEM – Directiva 2004/108/CE (judec în 18 Aprilie 2016) și Directiva 2014/53/UE (judec în 28 Aprilie 2016)	<input checked="" type="checkbox"/> EN 55022:2010+AC:2011	<input checked="" type="checkbox"/> EN 55024:2010
<input checked="" type="checkbox"/> EN 61000-3-2:2008+A2:2009	<input checked="" type="checkbox"/> EN 61000-3-3:2013	<input checked="" type="checkbox"/> EN 61000-3-2:2013
<input checked="" type="checkbox"/> EN 55013:2007+A1:2009+A2:2009	<input checked="" type="checkbox"/> EN 55020:2007+A11:2011	

RoTTE – Directiva 1999/5/CE	
<input checked="" type="checkbox"/> EN 300 328 V1.9 1(2010-02)	<input checked="" type="checkbox"/> EN 301 488-1 V1.9 2(2011-09)
<input checked="" type="checkbox"/> EN 300 440-1 V1.6 1(2010-08)	<input checked="" type="checkbox"/> EN 301 488-2 V1.6 1(2010-12)
<input checked="" type="checkbox"/> EN 300 440-2 V1.4 1(2010-08)	<input checked="" type="checkbox"/> EN 301 488-4 V2.1 1(2010-12)
<input checked="" type="checkbox"/> EN 301 871 V9.0 2(2003-03)	<input checked="" type="checkbox"/> EN 301 488-7 V1.3 1(2009-11)
<input checked="" type="checkbox"/> EN 301 868-1 V7.1.1	<input checked="" type="checkbox"/> EN 301 488-9 V1.4 1(2007-11)
<input checked="" type="checkbox"/> EN 301 868-2 V8.2 1(2013-10)	<input checked="" type="checkbox"/> EN 301 488-17 V2.2 1(2012-09)
<input checked="" type="checkbox"/> EN 301 868-13 V6.2 1(2013-10)	<input checked="" type="checkbox"/> EN 301 488-24 V1.9 1(2010-10)
<input checked="" type="checkbox"/> EN 300 330-2 V1.9 1(2010-02)	<input checked="" type="checkbox"/> EN 301 287-2 V1.4 1(2009-11)
<input checked="" type="checkbox"/> EN 50360:2007(A1):2012	<input checked="" type="checkbox"/> EN 302 281-2 V1.1 1(2009-07)
<input checked="" type="checkbox"/> EN 62179:2010	<input checked="" type="checkbox"/> EN 50365:2002
<input checked="" type="checkbox"/> EN 62209-1:2008	<input checked="" type="checkbox"/> EN 50366:2013(A2):2014
<input checked="" type="checkbox"/> EN 62209-2:2010	<input checked="" type="checkbox"/> EN 62211:2008

LVD – Directiva 2006/95/CE (judec în 18 Aprilie 2016) și Directiva 2014/35/UE (judec în 28 Aprilie 2016)	
<input checked="" type="checkbox"/> EN 60950-1: 2006 / A12: 2011	<input checked="" type="checkbox"/> EN 60950-1: 2006 / A11: 2009
<input checked="" type="checkbox"/> EN 60950-1: 2006 / A2: 2013	<input checked="" type="checkbox"/> EN 60950-1: 2006 / A1: 2010

RoHS – Directiva 2002/95/CE	
<input checked="" type="checkbox"/> Regulation (EC) No. 1275/2008	<input checked="" type="checkbox"/> Regulation (EC) No. 279/2009
<input checked="" type="checkbox"/> Regulation (EC) No. 843/2009	<input checked="" type="checkbox"/> Regulation (EC) No. 817/2013

<input checked="" type="checkbox"/> RoHS – Directiva 2011/65/EU	Ver. 162/17
<input checked="" type="checkbox"/> Marcatul CE	
<input checked="" type="checkbox"/> Clasament Clasa 1	

CE 0560

(Marcaj de conformitate UE)

Semnătura	Taipei, Taiwan
Jerry Shen	Local emitent
Nume	1/8/2016
CEO	Data emiterii
Funcție	2016
	Anul în care Marcajul CE a fost aplicat pentru

EU Uygunluk Beyanı



Biz, bu imza altındaki	
Derece :	ASUSTEK COMPUTER INC.
Adres :	4F, No. 100, Li-Tsuei Rd., Peitou, Taipei 112, Taiwan
Anaşahat Yeri:	ASUS COMPUTER GmbH
Adres, Şehir:	HARKORT STR. 21-23, 40880 RATINGSÉN
Ülk:	ALMANYA

Aşağıdaki ürünleri beyan ediyorum :	
Ürün adı :	ASUS Phone
Model adı :	ASUS_Z01BD

Yukarıda belirtilen beyanın konusu birik yasalarınna göre uygundur:

CEM – Directiv 2004/108/CE 18 Nisan 2016'ya kadar ve Directiv 2014/53/EU 28 Nisan 2016	
<input checked="" type="checkbox"/> EN 55022:2010+AC:2011	<input checked="" type="checkbox"/> EN 55024:2010
<input checked="" type="checkbox"/> EN 61000-3-2:2008+A2:2009	<input checked="" type="checkbox"/> EN 61000-3-3:2013
<input checked="" type="checkbox"/> EN 55013:2007+A1:2009+A2:2009	<input checked="" type="checkbox"/> EN 55020:2007+A11:2011

RoTTE – Directiv 1999/5/CE	
<input checked="" type="checkbox"/> EN 300 328 V1.9 1(2010-02)	<input checked="" type="checkbox"/> EN 301 488-1 V1.9 2(2011-09)
<input checked="" type="checkbox"/> EN 300 440-1 V1.6 1(2010-08)	<input checked="" type="checkbox"/> EN 301 488-2 V1.6 1(2010-12)
<input checked="" type="checkbox"/> EN 300 440-2 V1.4 1(2010-08)	<input checked="" type="checkbox"/> EN 301 488-4 V2.1 1(2010-12)
<input checked="" type="checkbox"/> EN 301 871 V9.0 2(2003-03)	<input checked="" type="checkbox"/> EN 301 488-7 V1.3 1(2009-11)
<input checked="" type="checkbox"/> EN 301 868-1 V7.1.1	<input checked="" type="checkbox"/> EN 301 488-9 V1.4 1(2007-11)
<input checked="" type="checkbox"/> EN 301 868-2 V8.2 1(2013-10)	<input checked="" type="checkbox"/> EN 301 488-17 V2.2 1(2012-09)
<input checked="" type="checkbox"/> EN 301 868-13 V6.2 1(2013-10)	<input checked="" type="checkbox"/> EN 301 488-24 V1.9 1(2010-10)
<input checked="" type="checkbox"/> EN 300 330-2 V1.9 1(2010-02)	<input checked="" type="checkbox"/> EN 301 287-2 V1.4 1(2009-11)
<input checked="" type="checkbox"/> EN 50360:2007(A1):2012	<input checked="" type="checkbox"/> EN 302 281-2 V1.1 1(2009-07)
<input checked="" type="checkbox"/> EN 62179:2010	<input checked="" type="checkbox"/> EN 50365:2002
<input checked="" type="checkbox"/> EN 62209-1:2008	<input checked="" type="checkbox"/> EN 50366:2013(A2):2014
<input checked="" type="checkbox"/> EN 62209-2:2010	<input checked="" type="checkbox"/> EN 62211:2008

LVD – Directiv 2006/95/CE 18 Nisan 2016'ya kadar ve Directiv 2014/35/EU 28 Nisan 2016	
<input checked="" type="checkbox"/> EN 60950-1: 2006 / A12: 2011	<input checked="" type="checkbox"/> EN 60950-1: 2006 / A11: 2009
<input checked="" type="checkbox"/> EN 60950-1: 2006 / A2: 2013	<input checked="" type="checkbox"/> EN 60950-1: 2006 / A1: 2010

RoHS – Directiv 2002/95/CE	
<input checked="" type="checkbox"/> Regulation (EC) No. 1275/2008	<input checked="" type="checkbox"/> Regulation (EC) No. 279/2009
<input checked="" type="checkbox"/> Regulation (EC) No. 843/2009	<input checked="" type="checkbox"/> Regulation (EC) No. 817/2013

<input checked="" type="checkbox"/> RoHS – Directiv 2011/65/EU	Ver. 162/17
<input checked="" type="checkbox"/> CE İmari	
<input checked="" type="checkbox"/> Clasament Scara 1	

CE 0560

(EU uygunluk işaretli)

İmza	Taipei, Taiwan
Jerry Shen	Sözüm yeri
Başlı Ad	1/8/2016
CEO	Sözüm tarihi
Pozisyonu	2016
	CE işaretinin ilk eklemeği yıl

DECLARATION UE DE CONFORMITE



Nous, soussignés

Fabricant:	ASUSTEK COMPUTER INC.
Adresse:	4F, No. 150, Li-Tsuei Rd., Peitou, Taipei 112, TAIWAN
Représentant autorisé en Europe:	ASUS COMPUTER GmbH
Adresse, ville:	HARKORT STR. 21-23, 40880 RATINGSBEN
Pays:	GERMANY

Déclarons l'appareil suivant:

Nom du produit :	ASUS Phone
Nom du modèle :	ASUS_Z01BD, ASUS_Z01BDB, ASUS_Z01BDA

L'objet de la déclaration décrit ci-dessus est conforme avec la législation d'harmonisation de l'Union européenne

 Directive CEM 2004/108/CE (jusqu'au 19 avril 2016) et la directive 2014/53/UE (à partir du 20 avril 2016)

<input checked="" type="checkbox"/> EN 55022:2010+AC:2011	<input checked="" type="checkbox"/> EN 55024:2010
<input checked="" type="checkbox"/> EN 61000-3-2:2009+A2:2010	<input checked="" type="checkbox"/> EN 61000-3-3:2013
<input checked="" type="checkbox"/> EN 55023:2007+A1:2010+A2:2010	<input checked="" type="checkbox"/> EN 55023:2007+A1:2011

 Directive RAUTE 1999/5/CE

<input checked="" type="checkbox"/> EN 300 328 V1.8.1(2010-02)	<input checked="" type="checkbox"/> EN 301 888-1 V1.8.2(2011-08)
<input checked="" type="checkbox"/> EN 300 640-1 V1.6.1(2010-08)	<input checked="" type="checkbox"/> EN 301 888-2 V1.8.1(2013-12)
<input checked="" type="checkbox"/> EN 300 640-2 V1.6.1(2010-08)	<input checked="" type="checkbox"/> EN 301 888-4 V2.1.1(2013-12)
<input checked="" type="checkbox"/> EN 301 811 V9.0(2009-03)	<input checked="" type="checkbox"/> EN 301 888-7 V1.3.1(2009-11)
<input checked="" type="checkbox"/> EN 301 908-1 V1.1.1	<input checked="" type="checkbox"/> EN 301 888-9 V1.6.1(2007-11)
<input checked="" type="checkbox"/> EN 301 908-2 V8.2.1(2013-10)	<input checked="" type="checkbox"/> EN 301 888-10 V2.2.1(2012-09)
<input checked="" type="checkbox"/> EN 301 908-13 V8.2.1(2013-10)	<input checked="" type="checkbox"/> EN 301 888-24 V1.6.1(2010-10)
<input checked="" type="checkbox"/> EN 300 330-2 V1.8.1(2010-02)	<input checked="" type="checkbox"/> EN 301 387-2 V1.6.1(2008-11)
<input checked="" type="checkbox"/> EN 30380:2011/A1:2012	<input checked="" type="checkbox"/> EN 302 281-2 V1.1.1(2008-07)
<input checked="" type="checkbox"/> EN 62479:2010	<input checked="" type="checkbox"/> EN 60389:2002
<input checked="" type="checkbox"/> EN 62209-2:2010	<input checked="" type="checkbox"/> EN 60984:2013/AC:2014
	<input checked="" type="checkbox"/> EN 62211:2008

 Directive LVD 2006/95/CE (jusqu'au 19 avril 2016) et la directive 2014/34/UE (à partir du 20 avril 2016)

<input checked="" type="checkbox"/> EN 60950-1:2006 / A2:2011	<input checked="" type="checkbox"/> EN 60950-1:2006 / A11:2009
<input checked="" type="checkbox"/> EN 60950-2:2006 / A2:2013	<input checked="" type="checkbox"/> EN 60950-1:2006 / A1:2010

 Directive Accessoires 2006/128/CE

<input checked="" type="checkbox"/> Règlement (CE) No. 1275/2008	<input checked="" type="checkbox"/> Règlement (CE) No. 278/2009
<input checked="" type="checkbox"/> Règlement (CE) No. 842/2009	<input checked="" type="checkbox"/> Règlement (UE) No. 617/2013

 Directive RoHS 2011/65/UE

Ver. 160217

 Marquage CE Équivalence de classe 1

CE 0560

(Marquage UE de conformité)

Signature

Taipei, Taiwan

Lieu de délivrance

Jerry Shen

1/8/2016

Nom en caractères d'imprimerie

Date d'Émission

CEO

2016

Position

Année où commence l'apposition
du marquage CE

EU Konformitätserklärung



Hiermit erkläre ich,

Fabrikant:	ASUSTEK COMPUTER INC.
Anschrift:	4F, No. 150, Li-Tsuei Rd., Peitou, Taipei 112, TAIWAN
Berechtigter:	ASUS COMPUTER GmbH
Anschrift des Berechtigten:	HARKORT STR. 21-23, 40880 RATINGSBEN
Land:	GERMANY

dass nachstehend bezeichnete Produkte

Produktbezeichnung:	ASUS Phone
Modellbezeichnung:	ASUS_Z01BD, ASUS_Z01BDB, ASUS_Z01BDA

mit den sachfahrend angegebenen, für das Produkt geltenden Richtlinien/Bedingungen übereinstimmen:

 EMV – Richtlinie 2004/108/EG (bis 19. April 2016) und Richtlinie 2014/53/UE (ab 20. April 2016)

<input checked="" type="checkbox"/> EN 55022:2010+AC:2011	<input checked="" type="checkbox"/> EN 55024:2010
<input checked="" type="checkbox"/> EN 61000-3-2:2009+A2:2010	<input checked="" type="checkbox"/> EN 61000-3-3:2013
<input checked="" type="checkbox"/> EN 55023:2007+A1:2010+A2:2010	<input checked="" type="checkbox"/> EN 55023:2007+A1:2011

 RAUTE – Richtlinie 1999/5/CE

<input checked="" type="checkbox"/> EN 300 328 V1.8.1(2010-02)	<input checked="" type="checkbox"/> EN 301 888-1 V1.8.2(2011-08)
<input checked="" type="checkbox"/> EN 300 640-1 V1.6.1(2010-08)	<input checked="" type="checkbox"/> EN 301 888-2 V1.8.1(2013-12)
<input checked="" type="checkbox"/> EN 300 640-2 V1.6.1(2010-08)	<input checked="" type="checkbox"/> EN 301 888-4 V2.1.1(2013-12)
<input checked="" type="checkbox"/> EN 301 811 V9.0(2009-03)	<input checked="" type="checkbox"/> EN 301 888-7 V1.3.1(2009-11)
<input checked="" type="checkbox"/> EN 301 908-1 V1.1.1	<input checked="" type="checkbox"/> EN 301 888-9 V1.6.1(2007-11)
<input checked="" type="checkbox"/> EN 301 908-2 V8.2.1(2013-10)	<input checked="" type="checkbox"/> EN 301 888-10 V2.2.1(2012-09)
<input checked="" type="checkbox"/> EN 301 908-13 V8.2.1(2013-10)	<input checked="" type="checkbox"/> EN 301 888-24 V1.6.1(2010-10)
<input checked="" type="checkbox"/> EN 300 330-2 V1.8.1(2010-02)	<input checked="" type="checkbox"/> EN 301 387-2 V1.6.1(2008-11)
<input checked="" type="checkbox"/> EN 30380:2011/A1:2012	<input checked="" type="checkbox"/> EN 302 281-2 V1.1.1(2008-07)
<input checked="" type="checkbox"/> EN 62479:2010	<input checked="" type="checkbox"/> EN 60389:2002
<input checked="" type="checkbox"/> EN 62209-2:2010	<input checked="" type="checkbox"/> EN 60984:2013/AC:2014
	<input checked="" type="checkbox"/> EN 62211:2008

 LVD – Richtlinie 2006/95/EG (bis 19. April 2016) und Richtlinie 2014/34/UE (ab 20. April 2016)

<input checked="" type="checkbox"/> EN 60950-1:2006 / A2:2011	<input checked="" type="checkbox"/> EN 60950-1:2006 / A11:2009
<input checked="" type="checkbox"/> EN 60950-2:2006 / A2:2013	<input checked="" type="checkbox"/> EN 60950-1:2006 / A1:2010

 Ökodesign – Richtlinie 2009/128/EG

<input checked="" type="checkbox"/> Verordnung (EU) No. 1275/2008	<input checked="" type="checkbox"/> Verordnung (EU) No. 278/2009
<input checked="" type="checkbox"/> Verordnung (EU) No. 842/2009	<input checked="" type="checkbox"/> Verordnung (EU) No. 617/2013

 RoHS – Richtlinie 2011/65/UE

Ver. 160217

 CE Kennzeichen Geräteklasse 1

CE 0560

(EU Konformitätszeichen)

Unterschrift

Taipei, Taiwan

Ort

Jerry Shen

1/8/2016

Name

Datum

CEO

2016

Position

Jahr der Kennzeichenergabe

UE Declaración de Conformidad



Nosotros, los abajo firmantes,

Fabricante:	ASUSTEK COMPUTER INC.
Dirección:	4F, No. 100, Li-Tsuei Rd., Beitou, Taipei 112, TAIWAN
Representante autorizado en Europa:	ASUS COMPUTER GmbH
Dirección, Ciudad:	HARKORT STR. 21-23, 40880 RATINGSB.
País:	GERMANY

Declaramos el siguiente producto:

Nombre del aparato :	ASUS Phone
Nombre del modelo :	ASUS_Z01BD, ASUS_Z01BDB, ASUS_Z01BDA

El objeto de la declaración describe anteriormente se conforma con la legislación de armonización pertinente de la Unión:

EMC Directiva 2004/108/CE (hasta el 19 de abril, 2016) y Directiva 2014/53/UE (desde el 20 de abril, 2016)

<input checked="" type="checkbox"/> EN 55022:2010+A1:2011	<input checked="" type="checkbox"/> EN 55024:2010
<input checked="" type="checkbox"/> EN 61000-3-2:2006+A2:2009	<input checked="" type="checkbox"/> EN 61000-3-3:2013
<input checked="" type="checkbox"/> EN 55013:2007+A1:2009+A2:2009	<input checked="" type="checkbox"/> EN 55020:2007+A1:2011

RAITE – Directiva 1999/5/CE

<input checked="" type="checkbox"/> EN 300 328 V1.8 1(2010-02)	<input checked="" type="checkbox"/> EN 301 488-1 V1.8.2(2011-09)
<input checked="" type="checkbox"/> EN 300 440-1 V1.6 1(2010-08)	<input checked="" type="checkbox"/> EN 301 488-2 V1.6 1(2010-12)
<input checked="" type="checkbox"/> EN 300 440-2 V1.4 1(2010-08)	<input checked="" type="checkbox"/> EN 301 488-4 V2.1 1(2010-12)
<input checked="" type="checkbox"/> EN 301 911 V9.2 2(2009-03)	<input checked="" type="checkbox"/> EN 301 488-7 V1.3 1(2009-11)
<input checked="" type="checkbox"/> EN 301 888-1 V1.1 1	<input checked="" type="checkbox"/> EN 301 488-9 V1.4 1(2007-11)
<input checked="" type="checkbox"/> EN 301 888-2 V8.2 1(2010-10)	<input checked="" type="checkbox"/> EN 301 488-17 V2.2 1(2012-08)
<input checked="" type="checkbox"/> EN 301 888-13 V8.2 1(2010-10)	<input checked="" type="checkbox"/> EN 301 488-24 V1.8 1(2010-10)
<input checked="" type="checkbox"/> EN 300 330-2 V1.3 1(2010-02)	<input checked="" type="checkbox"/> EN 301 387-2 V1.4 1(2009-11)
<input checked="" type="checkbox"/> EN 50360:2007(A1:2012)	<input checked="" type="checkbox"/> EN 302 281-2 V1.1 1(2009-07)
<input checked="" type="checkbox"/> EN 62478:2010	<input checked="" type="checkbox"/> EN 60988:2002
<input checked="" type="checkbox"/> EN 62209-1:2008	<input checked="" type="checkbox"/> EN 60988:2013(A1:2014)
<input checked="" type="checkbox"/> EN 62209-2:2010	<input checked="" type="checkbox"/> EN 62471:2008

LVD Directiva 2006/95/CE (hasta el 19 de abril, 2016) y Directiva 2014/30/UE (desde el 20 de abril, 2016)

<input checked="" type="checkbox"/> EN 60950-1:2006 / A1:2011	<input checked="" type="checkbox"/> EN 60950-2:2006 / A1:2009
<input checked="" type="checkbox"/> EN 60950-2:2006 / A2:2013	<input checked="" type="checkbox"/> EN 60950-3:2006 / A1:2010

Diseño Ecológico – Directiva 2009/125/CE

<input checked="" type="checkbox"/> Regulation (EC) No. 1275/2008	<input checked="" type="checkbox"/> Regulation (EC) No. 279/2009
<input checked="" type="checkbox"/> Regulation (EC) No. 803/2009	<input checked="" type="checkbox"/> Regulation (EU) No. 817/2013

RoHS – Directiva 2011/65/UE

Mercado CE

Clase de sonido 1

Ver 140217

CE 0560

(mercado CE de conformidad)

	Taipei, Taiwan
Firma	Lugar de emisión
Jerry Shen	1/8/2016
Nombre impreso	Fecha de emisión
CEO	2016
Posición	Año en que se colocó el marcado CE por primera vez

DECLARATION OF CONFORMITY

Per FCC Part 2 Section 2.1077(a)



Responsible Party Name: Asus Computer International

Address: 800 Corporate Way, Fremont, CA 94539.

Phone/Fax No: (510)739-3777/(510)608-4555

herby declares that the product

Product Name : ASUS Phone

Model Number : ASUS_Z01BDC

Conforms to the following specifications:

FCC Part 15, Subpart B, Unintentional Radiators

Supplementary Information:

This device complies with part 15 of the FCC Rules. Operation is subject to the following two conditions: (1) This device may not cause harmful interference, and (2) this device must accept any interference received, including interference that may cause undesired operation.

Representative Person's Name : Steve Chang / President

Signature :

Date : Aug. 12, 2016

Ver. 140221

ASUS

**Address: 4F, 150 LI-TE RD., PEITOU, TAIPEI,
TAIWAN**

Tel: 886228943447

Fax: 886228907698

Declaration

We declare that the IMEI codes for this product, **ASUS Phone**, are unique to each unit and only assigned to this model. The IMEI of each unit is factory set and cannot be altered by the user and that it complies with the relevant IMEI integrity related requirements expressed in the GSM standards.

Should you have any questions or comments regarding this matter, please contact us.

Sincerely yours,

ASUSTeK COMPUTER INC.

Tel: 886228943447

Fax: 886228907698

Support: <http://vip.asus.com/eservice/techserv.aspx>

Copyright © 2016 ASUSTeK COMPUTER INC.

All Rights Reserved.

You acknowledge that all rights of this Manual remain with ASUS. Any and all rights, including without limitation, in the Manual or website, and shall remain the exclusive property of ASUS and/or its licensors. Nothing in this Manual intends to transfer any such rights, or to vest any such rights to you.

ASUS PROVIDES THIS MANUAL "AS IS" WITHOUT WARRANTY OF ANY KIND. SPECIFICATIONS AND INFORMATION CONTAINED IN THIS MANUAL ARE FURNISHED FOR INFORMATIONAL USE ONLY, AND ARE SUBJECT TO CHANGE AT ANY TIME WITHOUT NOTICE, AND SHOULD NOT BE CONSTRUED AS A COMMITMENT BY ASUS.

ZenTalk Fans Forum

http://www.asus.com/zentalk/global_forward.php

