

4 DVI-D

Connects the DVI cable to the DVI connector on the computer.

5 ANALOG RGB

Connects the VGA signal cable to the VGA connector on the computer.

6 PC AUDIO INPUT

Connect to the audio-output port of a PC.

7 RS-232C

This is used for connecting a serial cable.

8 COMPONENT VIDEO INPUT

Jack for connecting the DVD player (or VCR player or Digital TV playback player) video input connector (for both DVD and DTV).

9 COMPONENT AUDIO INPUT

Jack for connecting the DVD player (or DTV) audio input connector.

10 OPTICAL OUTPUT

Connects to a Digital Audio component.

11 VIDEO INPUT 1/2 (AV 1, 2)

This jack is used for audio/video input from external devices.

12 ANT (VHF/UHF) Connector

Connect with an external cable from the external antenna.

13 VIDEO OUT 1

This jack is used for output from the LCD TV video to an external (other) TV.

14 Main Power Button

Press this button to switch the LCD TV main power on/off. (To use the TV, press this button to turn the main power on, and press the POWER button on the remote control.)

15 AC Input Connector

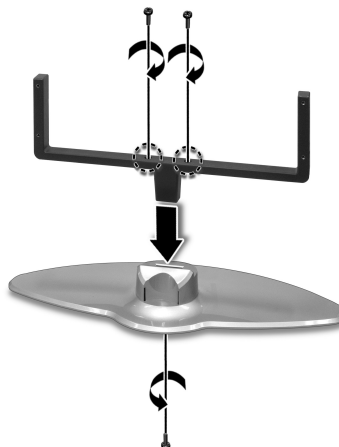
To input AC power cable from a power outlet.

N · O · T · E

► *Either S-Video input signal or Composite Video input signal can be connected for use.*

▶ Cradle Installation

- 1 Place the cradle on a wide, stable, and flat surface.
- 2 If the cradle has not been assembled, assemble it as illustrated in the diagram.



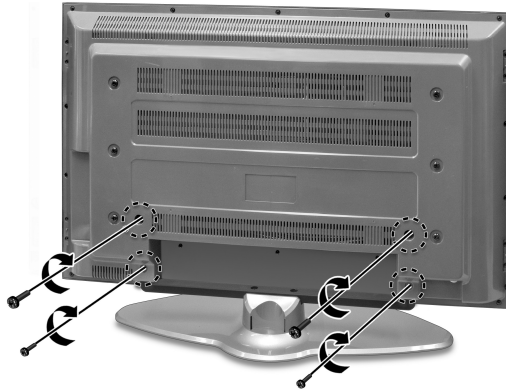
N · O · T · E

▶ If installing the LCD panel on the cradle, install the LCD panel before attaching the speakers.

- 3 Lower the LCD panel in the direction of the arrow.

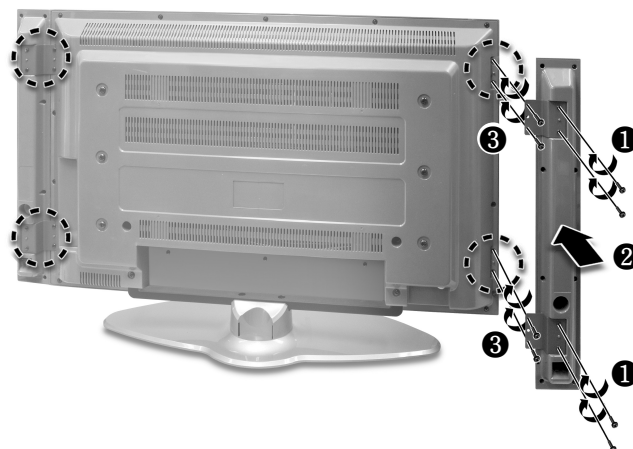


- Secure the LCD TV with screws.



► Speaker Installation

- Attach the latch to the speaker, and secure it with screws.
- Attach the speaker to the LCD TV, and secure it with screws.



- 3 Connect the speaker audio cable to the LCD TV.

