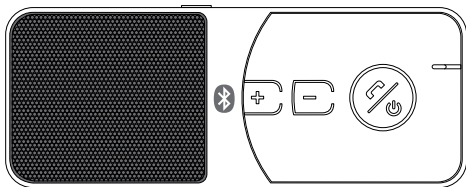


# User's Manual



## **CK21** Bluetooth Speakerphone

# Contents

About CK21 Bluetooth speakerphone .....	1
About Bluetooth technology .....	1
Getting Started.....	2
How to replace the battery .....	3
Installation - Sun Visor .....	4
Charging the battery.....	5
Battery information.....	5
Turning On/Off the CK21.....	6
Pairing.....	6
Make Connection/Link to Mobile phone.....	8
Disconnect from Mobile phone.....	8
Using the CK21 .....	9
Reset the paired device(s) list and the last/default user.....	11
LED Indication .....	12
Safety and general information .....	13
Trouble Shooting .....	14
EU.....	15
Product Specifications .....	16

## **1** *About CK21 Bluetooth Speakerphone*

This versatile Bluetooth speakerphone is portable and specially designed for the user to enjoy convenience and freedom of wireless communication. Dual capacity of use on desk-top like a conference Speakerphone and in-car like a Hands-Free car kit. CK21 built advanced DSP technology for Echo Cancellation & Noise Suppression, provides you excellent full duplex sound quality.

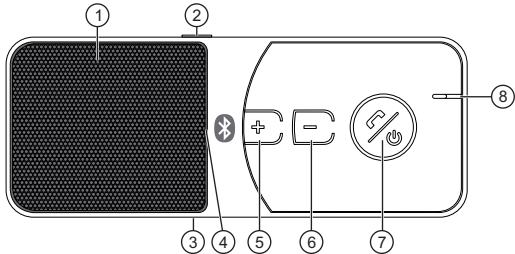
## **2** *About Bluetooth Technology*

Bluetooth is a short-range wireless communication technology. The Bluetooth wireless technology makes it possible to connect any compatible portable and stationary communications device without using cables. The technology is based on a radio link that offers fast and reliable transmission of voice and data information. Bluetooth refers to a worldwide standard designed to operate in the internationally recognized ISM (Industrial Scientific and Medical) frequency band. Within the ISM band (2.4GHz~2.485GHz), Bluetooth transmissions hop between 79 separate frequencies 1.600 times every second, and with a communication range of about 10 meters. Your handset must support Bluetooth.

### 3 Getting Started

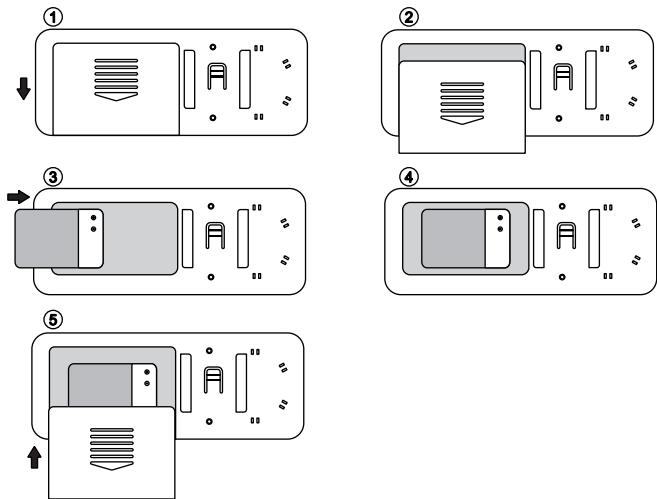
To use your Bluetooth speakerphone, please follow these simple steps:

- a) Charge your speakerphone. Before using the speakerphone, it is recommended to charge the battery fully for the first time. Normally charge the battery fully need take approx 3 hours.
- b) Put the speakerphone close to a Bluetooth-enabled mobile phone less than 1 meter distance for pairing operation.
- c) Ensure your speakerphone and handset is within 10 meters Bluetooth connection distance.

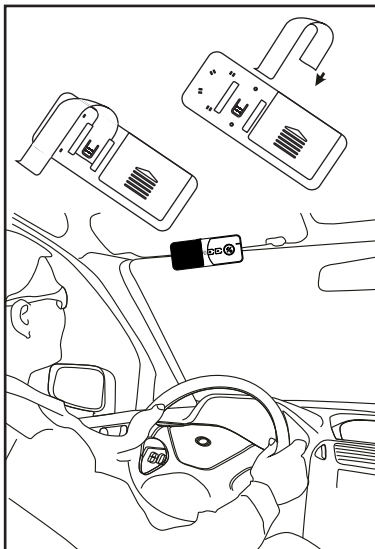


- |                                     |                                |
|-------------------------------------|--------------------------------|
| 1. Speaker                          | 5. Volume Increase (V+)        |
| 2. Mute Button                      | 6. Volume Decrease (V-)        |
| 3. Charging Socket (5-pin mini-USB) | 7. MFB (Multi-Function Button) |
| 4. LED indicators                   | 8. Microphone                  |

## How to replace the battery



## *Installation - Sun Visor*



## **4** *Charging the battery*

This device has an replaceable, rechargeable battery, it is compatible with Nokia BL-5B battery. But you are recommend to use the original accessory or approved battery by supplier.

1. For first time use, please fully charge the speakerphone.
2. Plug the car charger into the car lighter socket and put the MINI USB plug into the socket of the speakerphone.
3. While the charger is connected, the red indicator light is displayed during charging. Charging the battery fully may take up to 3 hour.
4. When the battery is fully charged, the red indicator light turns off and the blue indicator will solid light. Please disconnect the car charger from the speakerphone and the car lighter socket.

The fully charged battery can keep the power up to 10 hours of talk-time. When the speakerphone is powered on and battery power is low, it will notify you with voice **“Battery low”** very 30 seconds. The indicator light will turn red.

## **5** *Battery information*

Your device is powered by a chargeable battery. The full performance of a new battery is an achieved only after two or three complete charge and discharge cycles. The battery can be charged and discharged hundreds of times, but it will eventually wear out. Unplug the charger from the electrical plug and the device when not in use. Do not leave a fully charged battery connected to a charger, since overcharging may shorten its lifetime. If left unused, a fully charged battery will lose its charge over time.

## **Important:**

It is recommended that you fully charge the speakerphone before leaving it unused for a long time. To prevent overdischarge endangers the battery, you are recommended to fully charge the speakerphone **each 2 months**.

## **6** *Turning On/Off the CK21*

### **Turning On**

When the CK21 is turned off, press and hold the MFB for 3 seconds until you hear a short beep, the LED indicator will be solid blue for 3 seconds. The CK21 is now turned on.

### **Turning Off**

At any state after the CK21 is turned on, press and hold the MFB for 3 seconds until you hear a long beep, the CK21 will be turned off, the LED indicator will be solid red for 3 seconds at the same time.

**Note:** If the CK21 has been paired successfully, it will connect to the device that you last connected automatically.

## **7** *Pairing*

Before you use the CK21 the first time, you must pair the unit with a Bluetooth-enabled mobile phone. This operation guide is based on a Bluetooth enabled phone as the host device. Please refer to the following steps to pair CK21 speakerphone:

- (a) Put the CK21 close to a Bluetooth-enabled mobile phone less than 1 metre distance.



- (b) Ensure the CK21 is turned OFF .
- (c) Press and hold the MFB for 6 seconds until you see the LED flashes Red and Blue alternately and you will hear a long beep, it is now ready for pairing.
- (E) Select "CK21" from the list.
- (f) Enter the PIN code "0000" and confirm to complete pairing. When pairing is completed the CK21 will connect to your phone automatically, you may hear a long beep and LED indicator will flash blue 3 times. In standby state, the LED
  - indicator will flash blue 1 time every 3 seconds.

**Note:**

- If you did not finish pairing operation within 2 minutes, the CK21 will turn off. Please repeat the operation follows step (c) to (f) to pair the CK21 and mobile phone again.

The CK21 supports Bluetooth v2.1+EDR specification, the simplified pairing process will make pairing your devices easily, if your mobile phone supports
- Bluetooth v2.1+EDR specification, you just need turn on both of them, and add new Bluetooth device on your phone, the CK21 and your phone will find each other and connect automatically.

The CK21 supports multi-point technology. If you need connect the CK21 to the 2nd Bluetooth phone, please repeat the pairing operation steps above. When finishing the pairing, turn off the CK21 and turn on again, the CK21 will connect to the both 2 phones automatically.

## **8** ***Make Connection/Link to Mobile phone:***

After pairing is completed, if the CK21 is not connected to mobile phone, please follow the simple steps to activate the Bluetooth connection/link:

- 1.If your CK21 has finished the pairing operation successfully, when the CK21 is turned on, it will connect to the phone(s) you last connected automatically, but make sure your phone's Bluetooth function is active.
- 2.The CK21 supports multi-point and connects to 2 phones at the same time. In some operations, you need to distinguish the connection sequence, so we appoint the phone first connected as phone 1, the second one as phone 2.

## **9** ***Disconnect from Mobile phone:***

You may want to connect your CK21 with another Bluetooth mobile. Please follow the simple steps to disconnect the CK21 with the pre-paired handset.

Power off the CK21.

Select "disconnect" to remove previous connection from the device list.

## **10** *Using the CK21*

After the pairing is completed and battery is fully charged, please follow the bellow instruction to use the CK21.

### **(a) Answering a Call:**

When you receive an incoming call, press MFB shortly to answer the call or answer the call via your mobile phone by the normal way.

### **(b) Ending a Call:**

Shortly press MFB to end your call or end the call via your mobile phone by the normal way.

### **(c) Reject a Call:**

When you receive an incoming call, press and hold the MFB for 3 seconds until you hear a short beep, the incoming call will be rejected.

### **(d)Voice Dialing:**

In the stand-by mode, press the MFB shortly, you will hear a beep and the phone will prompt you say the voice tag that which you have already attached to your address list. If the voice tag is identified by the phone, the related number will be dialed out.

### **Note:**

- Please make sure that your mobile phone supports voice dialing function, and the voice tags have been set up on your mobile phone prior to attempting this function. Refer to your mobile phone's user guide or contact your service provider.
- If the CK21 has connected to 2 phones, double press the MFB will start Voice-Dialing of phone 2.

**(e)Last Number Re-Dialing:**

In the stand-by mode, Press and hold Volume Down button for 2 seconds, you will hear 2 short tones, the last number you dialed will be re-dial out. If the CK21 has connected to 2 phones, press and hold Volume Up button for 2 seconds will start last number re-dialing of phone 2.

**Note:**

- If the CK21 has connected to 2 phones, when one phone has activated a call, the CK21 will disconnect to the other phone temporarily, when you end the call the CK21 will re-connect it automatically, please make sure your phone's Bluetooth function would not be inactive during the calling.

**(f)Adjusting the Volume:**

During the call is in progress, press the volume up or volume down buttons to increase or decrease volume. You can also adjust the volume on you mobile phone.

**(g)Mute:**

During the call is in progress, shortly press the "MODE" button to mute the MIC of CK21, you will heart a tone from low to high, and the remindful tone will sound every 10s. Repeat the operation to cancel mute function.

**(h)Transfer a call:**

During the call is in progress, shortly press the "V+" & "V-"bttons, then the call will be transferred to mobile phone.

Repeat the operation can transfer the call between the mobile phone and CK21.

## **11** *Reset the paired device(s) list and the last/default user*

You may want to reset the CK21 to its original settings and clear the previous pairing. Please follow these simple steps.

(a) Ensure the CK21 is under standby mode.

(b) Press and hold the "V+" & "V-" buttons for 10 sec. until LED flashes blue & red at the same time. Release the buttons, the paired list of CK21 has been clear.

(c) After reset the paired list, if the CK21 is powered on again, it will enter pairing mode automatically, you can do a new pairing operation.

**12** LED Indication

<b>Status</b>	<b>Red LED</b>	<b>Blue LED</b>	<b>Sound</b>
Power On		Solid on for 3 seconds	Middle low beep
Power Off	Solid on for 3 seconds		Long low beep
Standby after Pairing		Flashes 1 time every 3 seconds	
Standby Low Voltage	Flashes 1 time every 3 seconds		3 beeps every one minute
In Talking Progress		Flashes 1 time every 15 seconds	
Pairing in Progress	Flashes Red and Blue alternately		
Pairing Completed		Flashes on every 3 seconds	Long beep
Mute	Solid on		2 tones every 10 seconds
Charging in Progress	Solid on		
Charging Completed	Off	Off	

## **13** *Safety and general information*

1. Please read this User's Manual carefully and follow all instructions.
2. To avoid any damage or malfunction of the device do not drop the device from high places.
3. Keep device away from humidity, water and any other liquid. If the device is exposed to water, moisture and other liquids do not operate it to avoid any electrical shock, explosion and damage to the device or yourself.
4. Do not place or keep this device near any heat sources, such as, direct sun light, radiators, stoves or other apparatus which produce heat. It may cause an explosion, degrade the performance and/or reduce battery life.
5. Do not modify, repair or disassemble device (Especially the battery: It may cause an explosion). Doing this will void the warranty.
6. Do not place heavy objects on the device.
7. Use only supplied and approved charger.
8. Replacement or service must be done by a qualified service center or manufacturer.
9. Unplug this device when unused for long periods of time or during lightening storms.

## **14** *Trouble Shooting*

If you are unable to connect your CK21 and mobile phone, please try the following:

- (a) Ensure the CK21 is paired with your mobile phone.
- (b) Ensure your mobile phone's Bluetooth feature is activated. Please refer to your mobile phone user guide for specific instruction.
- (c) Ensure the CK21 is within a maximum of 10 meters of your mobile phone(s) and there are no obstructions, such as wall or other electronic devices in between as it may cause shorter or interference transmission.
- (d) If all the above steps do not resolve your problem, please remove the battery for a while.
- (e) The Bluetooth CK21 is compliant with and adopts the Bluetooth Specification V1.2. However, interoperability between the device and other Bluetooth-enable products is not guaranteed because it depends on compatibility. For more information on the compatibility between the devices with other Bluetooth-enabled products, please check with the manufacturer/importer.



This product is CE certified according to the provision of the R&TTE Directive (99/5/EC). This declares that this product is in compliance with the essential requirements and other relevant provisions of Directive 1999/5/EC.

Please note that this product uses radio frequency bands not harmonized within EU. Within the EU this product is intended to be used in Austria, Belgium, Denmark, Finland, France, Germany, Greece, Ireland, Italy, Luxembourg, The Netherlands, Portugal, Spain, Sweden, and United Kingdom and within EFTA in Iceland, Norway and Switzerland.

Bluetooth is a trademark owned by the Bluetooth SIG, Inc.

## 16 *Product Specifications*

Bluetooth Specifications	Version 2.1, Class 2, 10 Meters
Bluetooth Profile Supported	Headset & Hands-Free Profiles
Operating Frequency Band	2.402 to 2.480GHz unlicensed ISM band
Dimension	115(L)x45(W)x15(H) mm
Weight	61g
Normal Charge Time	3 hrs.(approx.)
Talk Time	Up to 10 hrs.
Standby Time	Up to 400 hrs
Rechargeable Li-ion Battery	3.7V DC, 650mAH, (NKI #BL-5B compatible)
AC/DC Charger	DC 5 to 6 V, 300 mA

## **FCC WARNING**

This device complies with Part 15 of the FCC Rules. Operation is subject to the following two conditions:

- (1) this device may not cause harmful interference, and
- (2) this device must accept any interference received, including interference that may cause undesired operation.

NOTE 1: Any changes or modifications not expressly approved by the manufacturer could void the user's authority to operate the equipment.

NOTE 2: The manufacturer is not responsible for any radio or TV interference caused by unauthorized modifications to this equipment. Such modifications could void the user's authority to operate the equipment.