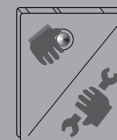




Accessories

BT Drive Free 211

1 021 104 211



Blaupunkt AudioVision GmbH & Co. KG
Robert-Bosch-Str. 200
D-31139 Hildesheim
5 101 040 000

www.blaupunkt.com

04/11

450 166 - de, gb, fr, es, pt, it, nl, sf, pl, hu, ro, bg



BLAUPUNKT





Contents

BT Drive Free 211 Bluetooth Car Kit.....	16
Bluetooth technology.....	16
Safety and general information	17
Disposal notes	17
Scope of delivery	18
Use headset separately	18
Overview	19
Inserting the battery	20
Installation at the sun visor.....	20
Charging the battery.....	21
Battery information	22
Switching BT Drive Free 211 on/off	23
Registering (pairing) and connecting with the cell phone	23
Using the BT Drive Free 211	24
Troubleshooting	25
Light indicators and signal sounds	26
Declaration of conformity	26
Warranty	27
Technical data	27

BT Drive Free 211 Bluetooth Car Kit

The versatile Bluetooth car kit is a portable device and was developed specifically for users who want to use their cell phone while driving. The BT Drive Free 211 is a combination of a Bluetooth headset and a docking that can conveniently be installed in the vehicle, whereby the headset can also be used separately for phone calls. The BT Drive Free 211 offers excellent hands-free quality and ensures convenient and safe phone calls while driving.

Bluetooth technology

Bluetooth TM is a registered trademark of Bluetooth SIG, Inc. Bluetooth is a wireless communication technology with short range. It enables wireless connections between all compatible portable and stationary communication devices. The technology is based on a radio connection that ensures a fast and reliable transmission of voice and data information.

Bluetooth refers to a worldwide standard for operating in the internationally recognised ISM frequency band (Industrial Scientific & Medical). Within the ISM band (2.4 GHz to 2.485 GHz), the Bluetooth transmission operates 1600 times per second between 79 different frequencies with a data transmission range of approx. 10 metres.

Safety and general information

1. Carefully read the operating instructions and follow the instructions.
2. To avoid any damages and malfunctions, do not drop the device from an elevated height.
3. Protect the device against humidity, water and other liquids. If the device should have been exposed to water, humidity or other liquids, do not use it since it may lead to damages of the device and to injuries from electrical shock or explosion.
4. Do not expose the device to extreme heat sources, such as direct sunlight. This can cause explosions as well as reduce the performance and/or service life of the battery.
5. Do not make any changes or repairs to the device and do not attempt to disassemble it. (Particularly not on the battery since the risk of explosion exists.) It will immediately void the warranty.
6. Do not place any heavy objects on the device.
7. Use only the supplied charger.
8. Repairs and service work may be performed only by a qualified service centre or the manufacturer.
9. In case of extended non-use or thunderstorms, disconnect the device from the power supply.

Disposal notes



Use the return and collection systems available to dispose of the old device.



Do not discard any batteries in the household trash; instead, return them to the corresponding collection sites.



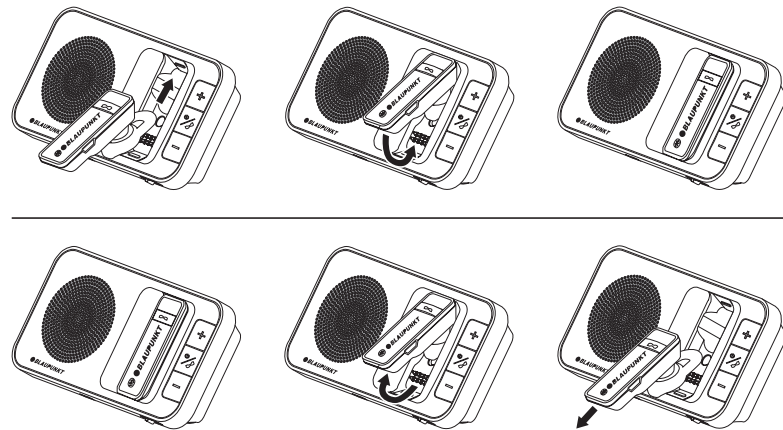
Scope of delivery

The scope of delivery includes:

- BT Drive Free 211 Bluetooth Car Kit (docking station and headset)
- Lithium-ion battery
- 12-volt DC vehicle charger adapter
- USB charger cable
- Operating instructions
- Fastening clip for the sun visor

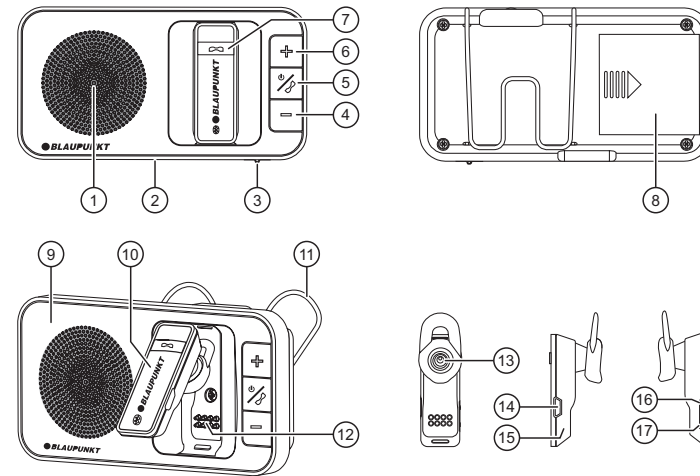
Use headset separately

The headset can also be used outside of the docking station for phone calls. To use the headset in the docking station or to remove it from the docking station, proceed as shown in the following figures.



Important: if the docking station is being charged while you are using the headset separately, the charging switch on the docking station should be switched off. Otherwise, the headset is switched off when it is inserted into the docking station and the charging process of the headset starts. An existing connection to a cell phone is disconnected.

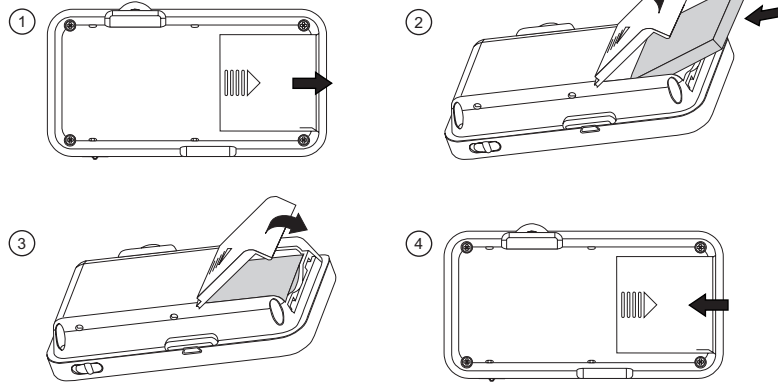
Overview



- ① Loudspeaker (docking station)
- ② Charging socket (micro USB) (docking station)
- ③ Headset charging switch
- ④ Decrease volume at the docking station (-)
- ⑤ MF button (illuminated multifunction button) (docking station)
- ⑥ Increase volume at the docking station (+)
- ⑦ MF button (illuminated multifunction button) (headset)
- ⑧ Battery compartment
- ⑨ Docking station
- ⑩ Headset
- ⑪ Fastening clip for the sun visor
- ⑫ Spring contacts
- ⑬ Loudspeaker (headset) / ear plugs
- ⑭ Charging socket (micro USB) (headset)
- ⑮ Microphone
- ⑯ Increase volume at the headset (+)
- ⑰ Decrease volume at the headset (-)

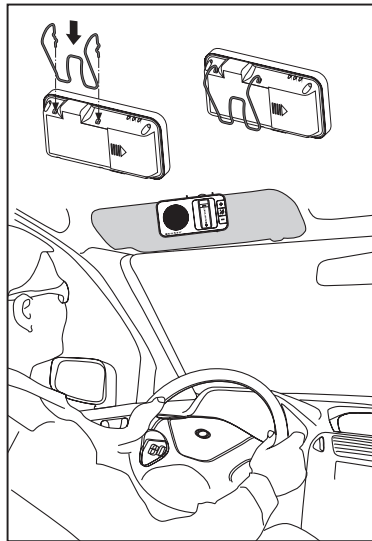


Inserting the battery



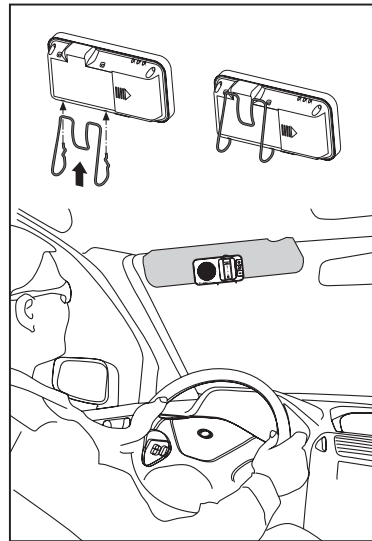
Installation at the sun visor

Sun visor flipped up towards the vehicle roof.



20

Sun visor flipped down towards the windshield.



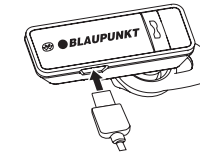
Charging the battery

Before its initial use

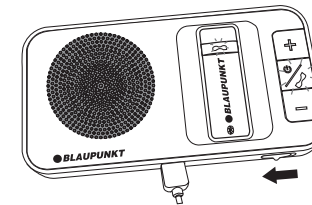
The BT Drive Free 211 is a combination of a docking station and a headset that is operated via chargeable batteries. Completely charge the batteries of docking station and headset before the initial use. Read the section "Battery information" before starting the charging process.

Connect the BT Drive Free 211 with the vehicle charging adapter via the USB charger cable. Connect the vehicle charging adapter to the cigarette lighter of the vehicle. The BT Drive Free 211 can also be charged via the computer using the USB cable.

Charging the battery in the headset



The headset can be charged directly via the USB charger cable. If the headset is in the docking station and the charging switch is switched on, the headset is charged via the docking station. During the charging process, the MF button at the headset lights up red. The complete charging of the headset takes approx. 1 hour. If the charging process is complete, the MF button lights up blue.



Important: Switching the charging switch on switches the headset off and the charging process starts. An existing connection to a cell phone is disconnected. If you want to use the headset, switch the charging switch off.

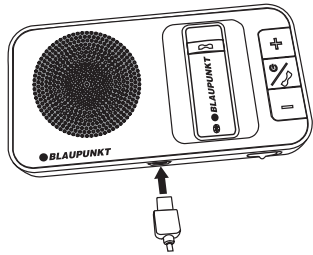
ENGLISH

21



Charging the battery in the docking station

The docking station is charged via the USB cable. During the charging process, the MF button of the docking station lights up red. The complete charging of the docking station takes approx. 3 hours. The indicator of the MF button switches off once the charging process is complete.



The docking station and headset are charged simultaneously if the headset is in the docking station and the charging switch is switched on.

Important: Switching the charging switch on switches the headset off. An existing connection to a cell phone is disconnected. The headset cannot be used during the charging process.

Charging process completed

Disconnect the BT Drive Free 211 after the complete charging process from the power supply.

Low battery power

If the charging state of the battery in the headset is very low, the MF button lights up red in every operating state and 5 signal sounds can be heard every 20 seconds until the headset automatically switches off. The docking station does not feature any warning indicator for low battery power. In this case, a further operation is no longer possible and the headset cannot be charged any longer via the docking station without external charger connection.

Battery information

Your device is operated with chargeable batteries. The lithium-ion-polymer battery of the headset cannot be replaced. The lithium-ion battery of the docking station can be replaced and is compatible with the Nokia battery BL-5B. The full performance of a new battery is not achieved until after two or three complete charging-discharging cycles. The battery can be charged and discharged several hundred times, but it loses its capacity over time.

Disconnect the BT Drive Free 211 from the power supply if you do not want to charge the batteries. Disconnect a completely charged battery from the charger since overcharging negatively impacts the service life of the battery. If a battery is not used over an extended period of time, it loses its capacity over time.

Important: Docking station and headset should be charged completely if you do not use the devices for a longer period of time. To avoid a deep discharge of the batteries, you should completely charge the Bluetooth car kit every 2 months.

Switching BT Drive Free 211 on/off

Switching on

If the headset is switched off, press the MF button of the headset until you hear 2 signal sounds and the MF button lights up blue 3 times. The headset is switched on and the MF button flashes blue.

Note: If the pairing with the BT Drive Free 211 was successful, the device automatically connects with the last connected cell phone after switch-on. For this purpose, the Bluetooth function of the cell phone must be activated. The initial pairing is described below.

Switch-off

If the BT Drive Free 211 is switched on, press the MF button until you hear 2 signal sounds and the MF button lights up red for 3 seconds. The device is switched off.

Registering (pairing) and connecting with the cell phone

Before you can use the BT Drive Free 211, you must register (pair) it with a Bluetooth-ready cell phone and connect it. The BT Drive Free 211 can be paired with two telephones, but connected only with one telephone at a time. Pairing the headset can be done separately or together with the docking station.

Note: If the headset is in the docking station, the MF button on the headset and on the docking station has the same function.

Proceed as described to pair the BT Drive Free 211:

- Hold the headset within range of a Bluetooth-ready cell phone; the distance may not exceed one metre.
- The headset must be switched off.
- Press the MF button for approx. 5 seconds until you hear a signal sound and the MF button intermittently flashes red and blue.



- Activate the Bluetooth function of the cell phone and start the search for Bluetooth devices. (For further details, please read the operating instructions of your cell phone.)
- Select "BT DF 211" from the displayed list.
- If necessary, enter the PIN code "0000" and confirm the entry. After successful pairing, you hear a long signal sound and the MF button flashes blue 5 times. The BT Drive Free 211 automatically connects with the cell phone and changes to standby mode a few seconds later. In standby mode, the MF button flashes blue 2 times every 5 seconds. (Note: The PIN code is preprogrammed and cannot be changed)
- In standby mode, briefly press the MF button to re-establish the connection. The connection can be established only if the BT Drive Free 211 is no further away from the cell phone than 10 metres.

Note: If the pairing is not completed within 2 minutes, the BT Drive Free 211 switches off again. In this case, restart the pairing to connect the BT Drive Free 211 with the cell phone.

Using the BT Drive Free 211

If the headset is in the docking station, it works together with the docking station as hands-free system. The headset can also be used separately for phone calls.

After the pairing has been successfully completed and the battery has been charged, the following functions can be performed:

Making a call

– Using voice dial

The cell phone must support the voice dial function and the function must be activated. The corresponding voice commands for the contacts must be recorded in the cell phone. You find the pertinent information in the operating instructions of the cell phone.

If the BT Drive Free 211 is in standby mode, briefly press the MF button. You will hear a short signal sound and the cell phone asks you to say the voice command which you recorded in the cell phone for the corresponding contact. If the voice command is recognised by your cell phone, the number associated with it is dialled.

– Redialling the last number

In the standby mode, press the MF button twice. You hear a signal sound and the number dialled last is dialled again.

Answering a call

To answer an incoming call, briefly press the MF button or the call button of the cell phone.

Ending a call

Briefly press the MF button or the end call button of the cell phone to end a call.

Rejecting a call

To reject an incoming call, press the MF button until you hear a new signal sound.

Transferring a call

To transfer a call from the cell phone to the headset, press the MF button during the call until you hear a signal sound. Repeat the process to transfer the call again from the headset to the cell phone.

Adjusting the volume

During a phone call, you can adjust the volume with the buttons "+" and "-". You can also set the volume via the volume buttons of the cell phone.

Muting the microphone

During a phone call, press the "-" button until you hear 2 signal sounds. The microphone of the headset is muted. At an interval of 20 seconds, the MF button lights up red 2 times and you hear 2 long signal sounds that indicate that the microphone is muted, but the phone call is still active. Repeat the operating step to reactivate the microphone.

Troubleshooting

If a connection between BT Drive Free 211 Bluetooth car kit and a cell phone cannot be established, try the following first:

- Check whether the Bluetooth car kit is connected with the cell phone.
- Ensure that the Bluetooth function of the cell phone is activated. You find more detailed information in the operating instructions of the cell phone.
- Ensure that the distance between Bluetooth car kit and cell phone is less than 10 metres. There may not be any obstacles in between, such as walls or electronic devices which could interfere with the transmission or reduce the range.
- If these steps should not lead to a solution for the problem, remove the battery from the docking station for a few minutes. If need be, contact the Service Centre of your dealer.



- The Bluetooth car kit meets the Bluetooth specification v2.1 + EDR. The flawless function between the BT Drive Free 211 and Bluetooth-ready cell phones from different manufacturers and of different types cannot be guaranteed since it depends on the compatibility.

Light indicators and signal sounds

Device status	MF button	Signal sounds
Switching on	Flashes blue 3 times	2 sounds
Switch-off	Lights red for 3 seconds	2 sounds
Standby after pairing	Flashes blue 2 times every 5 seconds	
Standby – Battery almost depleted	Indicator changes from blue to red	5 sounds every 20 seconds
During a call	Flashes blue 1 time every 2 seconds	
During pairing	Flashes red and blue alternately	
Pairing terminated	Flashes blue 5 times	Long sound
Mute	Flashes red 2 times every 20 seconds	2 long sounds every 20 seconds
During charging process	Lights red	
Charging process finished	Lights blue	

Declaration of conformity

The Blaupunkt AudioVision GmbH & Co. KG declares that this product complies with the basic requirements and the other relevant regulations of the directive 1999/5/EC. The declaration of conformity can be found on the Internet under www.blaupunkt.com.

Warranty

We provide a manufacturer's warranty for products bought within the European Union. For devices purchased outside the European Union, the warranty terms issued by our respective responsible domestic agency are valid. The warranty terms can be called up from www.blaupunkt.com.

Technical data

Bluetooth specifications	Version 2.1 + EDR, Class 2
Supported Bluetooth profile	Headset and hands-free profiles
Operating frequency range	2.402 to 2.480 GHz ISM band
Bluetooth range	Up to 10 metres
Dimensions	110 (L) x 58 (W) x 23 (H) mm
Weight	95 g
Battery charging time	Approx. 1 hour (headset) Approx. 3 hours (docking station)
Talk time	Up to 2 hours (headset) Up to 15 hours (docking station)
Standby time	Up to 80 hours (headset) Up to 400 hours (docking station)
Battery type	Lithium-ion, 3.7 V, 650 mAh, replaceable (compatible with Nokia battery BL-5B)
Charger	5 V - 6 V DC, 300 mA

ENGLISH

Subject to change!



FCC-Statements

All following FCC statements are valid for the Industry Canada Standard (IC) as well.

General

Interference Warning: (according to FCC part 15.19)

This device complies with Part 15 of the FCC Rules. Operation is subject to the following two conditions:

- (1) this device may not cause harmful interference, and
- (2) this device must accept any interference received, including interference that may cause undesired operation

Caution: (pertaining to FCC part 15.21)

Modifications not expressly approved by this company could void the user's authority to operate the equipment.

